



CRAFTSTONE

Real Stone Made Easy



PRODUCT CATALOGUE ◦ TECHNICAL SUPPORT

NOTHING COMPARES TO THE **TIMELESS BEAUTY** OF **NATURAL STONE**

If you're looking for a unique and natural building finish that will add real value to your project, look no further.



BRANZ Appraised
Appraisal No.793 [2019]

•
CONTENTS

ABOUT CRAFTSTONE.....1
CAPE BROWN.....3
COROMANDEL GREEN.....4
TUNDRA.....5
DESERT STONE.....6
GREY MICA.....7
DAYBREAK.....8
TUSSOCK.....9
RIVERSTONE.....10
GREEN MICA.....11
QUARRY STONE.....12
TUMBLED TRAVERTINE.....13
HONED TRAVERTINE.....14

TECHNICAL SUPPORT

TEAM AND EXPERTISE.....16
CLADDING SYSTEM.....17
FINISHES.....18
SUITABLE SUBSTRATES.....19
CRAFTSTONE FCB.....20
AAC PANEL.....21
CONTACT.....BACK COVER

NOTHING COMPARES TO THE **TIMELESS BEAUTY** OF NATURAL STONE

For feature walls and columns at your front entrance, chimneys or internal fireplace surrounds, commercial lobbies, or opulent landscaping projects; if you're looking for a unique and natural building finish that will add real value to your projects, look no further.

Craftstone have a wide range of quality stone cladding and landscaping products to give your home or commercial building that something special.



YOU CAN HAVE **CONFIDENCE** IN CRAFTSTONE

Craftstone are proud to hold New Zealand's only BRANZ Appraised system for installing real stone veneer.

That independent and invasive testing process gives you the confidence that our products and our installation system will stand the test of time.

Councils nationwide have issued Code Compliance Certificates for our products, knowing that BRANZ testing has proven our system worthy of their confidence.



WHY CHOOSE THE **CRAFTSTONE** REAL STONE VENEER SYSTEM?

- It's real stone! It has been formed over thousands of years and will last. No need for UV testing like artificial products.
- Our stone veneers are classed as medium weight (and in some cases light-weight) cladding, so they are face loaded. That means there is no need for expensive foundations, engineered lintels, or reinforcing such as you may need for a full-thickness stone installation.
- Our back-cut corner stones give the illusion of full thickness stone without the weight.
- Face loading means that Craftstone cladding can be retro-fitted to your home, inside or outside, or in your garden landscaping.
- Our nationwide network of Approved Installers provide confidence in a job well done.
- Craftstone was the first stone veneer system in New Zealand to pass the most stringent weathertightness test carried out under the Building Code (E2/VM1).
- BRANZ tested for seismic stability in the highest earthquake zones.
- BRANZ tested for use in extra high (ULS) wind zones.

CAPE BROWN

REMINISCENT OF ALEXANDRA SCHIST FROM CENTRAL OTAGO
AVAILABLE IN CRAFTSTONE™ *Select* OR PANEL VERSIONS
(CRAFTSTONE SELECT PICTURED)



SCHISTCLAD CORNER PANEL



SCHISTCLAD Z PANEL



NATURAL END PANEL



SILLS AND CAPSTONE



80 X 400 X 40MM
(SINGLE BULLNOSE)



250 X 400 X 40MM
(SINGLE BULLNOSE)



300 X 400 X 40MM
(DOUBLE BULLNOSE)



550 X 550 X 40MM
(CAPSTONE)



COROMANDEL GREEN

GREEN-UNDERTONED GREY SUBTLY ACCENTED WITH CREAM AND BURNT ORANGE
AVAILABLE IN CRAFTSTONE™ *Select* OR PANEL VERSIONS - LIMITED STOCK REMAINING
(PANEL PICTURED)

LIMITED STOCK



SCHISTCLAD CORNER PANEL



SCHISTCLAD Z PANEL



NATURAL END PANEL



SILLS AND CAPSTONE



80 X 400 X 40MM
(SINGLE BULLNOSE)



250 X 400 X 40MM
(SINGLE BULLNOSE)



300 X 400 X 40MM
(DOUBLE BULLNOSE)



550 X 550 X 40MM
(CAPSTONE)



TUNDRA

A RUSTIC SELECTION OF GOLDS AND BROWNS
AVAILABLE IN CRAFTSTONE™ *Select* OR PANEL VERSIONS
(PANEL PICTURED)



SCHISTCLAD CORNER PANEL



SCHISTCLAD Z PANEL



NATURAL END PANEL



SILLS AND CAPSTONE



80 X 400 X 40MM
(SINGLE BULLNOSE)



250 X 400 X 40MM
(SINGLE BULLNOSE)

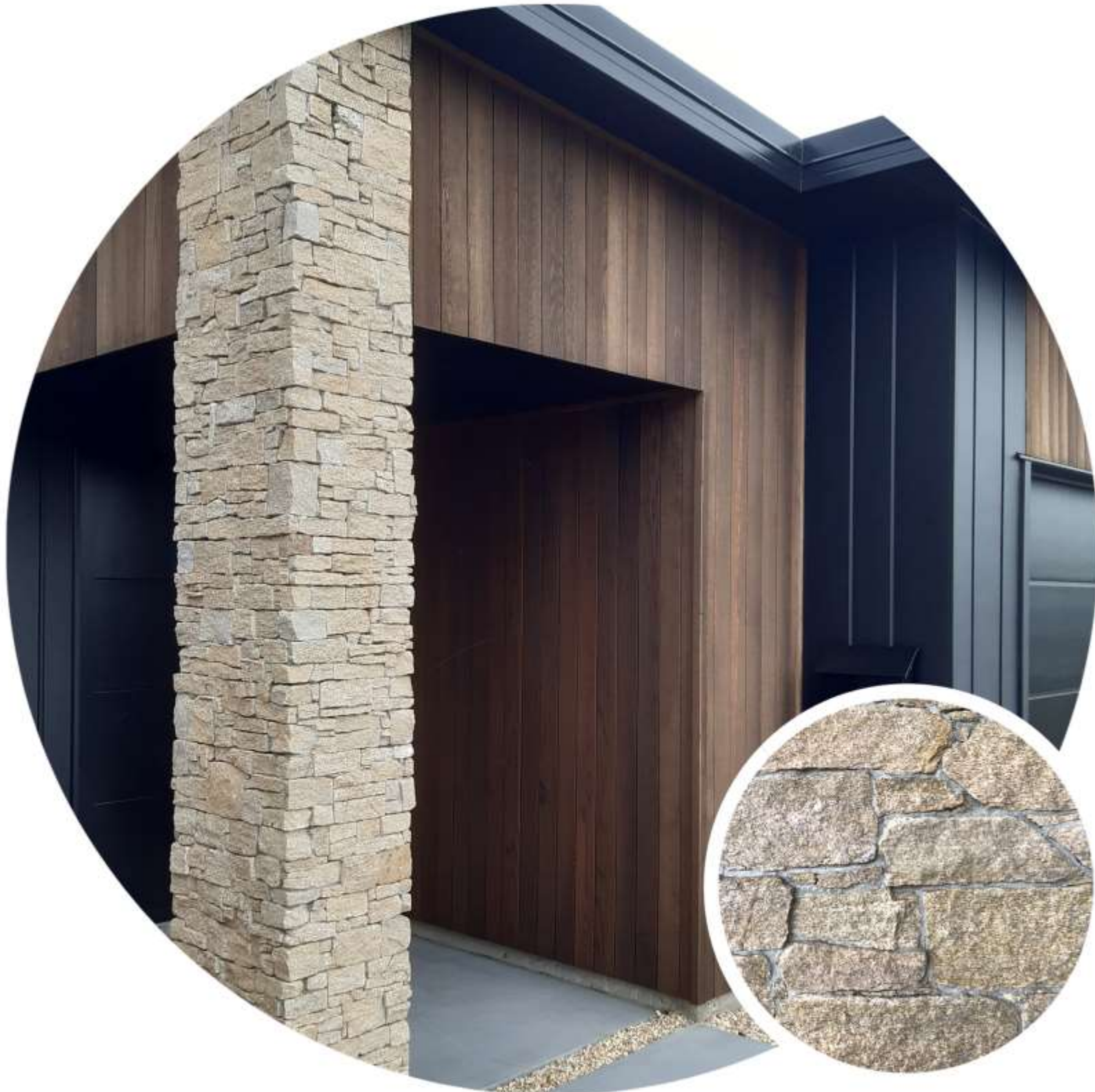


300 X 400 X 40MM
(DOUBLE BULLNOSE)



DESERT STONE

WARM BEIGE SEDIMENTARY ROCK SPECKLED WITH BLACK
AVAILABLE IN CRAFTSTONE™ *Select* OR PANEL VERSIONS
(PANEL PICTURED)



SCHISTCLAD CORNER PANEL



SCHISTCLAD Z PANEL



NATURAL END PANEL



SILLS AND CAPSTONE



80 X 400 X 40MM
(SINGLE BULLNOSE)



250 X 400 X 40MM
(SINGLE BULLNOSE)



300 X 400 X 40MM
(DOUBLE BULLNOSE)



GREY MICA

STRATIFIED LIGHT GREY SCHIST WITH MICA HIGHLIGHTS
AVAILABLE IN CRAFTSTONE™ *Select* OR PANEL VERSIONS
(CRAFTSTONE SELECT PICTURED WITH 5% CAPE BROWN ADDED)



SCHISTCLAD CORNER PANEL



SCHISTCLAD Z PANEL



NATURAL END PANEL



SILLS AND CAPSTONE



80 X 400 X 40MM
(SINGLE BULLNOSE)



250 X 400 X 40MM
(SINGLE BULLNOSE)



300 X 400 X 40MM
(DOUBLE BULLNOSE)



550 X 550 X 40MM
(CAPSTONE)



DAYBREAK

A SOFT BLUE-BASED GREY WITH AMBER SUNRISE HUES
 AVAILABLE IN CRAFTSTONE™ *Select* LEDGESTONE OR RANDOM
 (LEDGESTONE PICTURED)



LOOSE LEDGESTONE



RANDOM LOOSE STONE



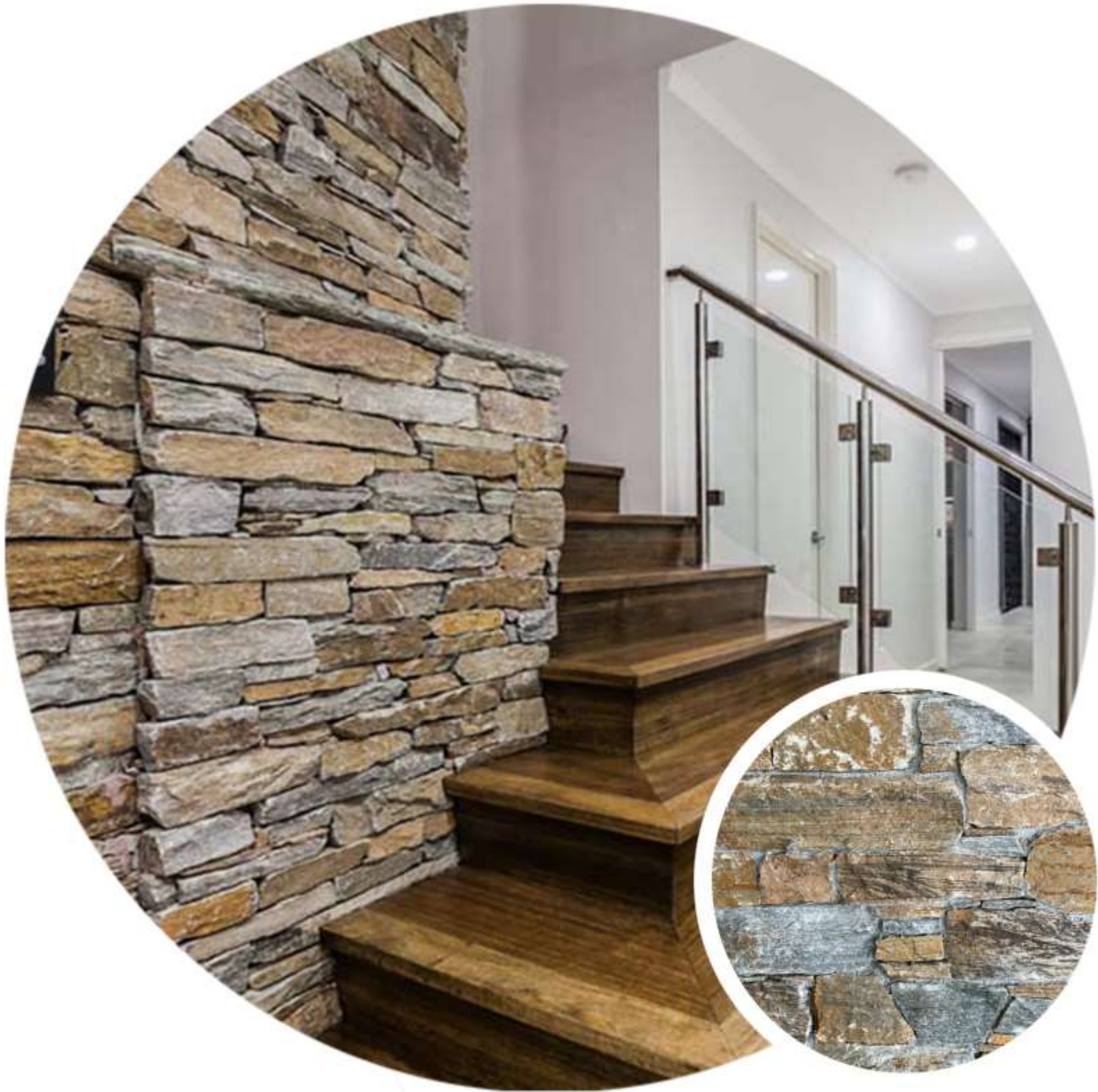
NOTE: This stone contains iron and may develop rust stains if exposed to the elements. Many customers like this effect, while others do not. As this is a natural feature of this stone type, it is not considered a defect and is not covered by our warranty.

TUSSOCK

70-30 BLEND OF TUNDRA AND GREEN MICA

AVAILABLE IN CRAFTSTONE SELECT OR PANEL VERSIONS

CUSTOMERS MAY CHOOSE COLOUR MIX PERCENTAGES WHEN OPTING FOR CRAFTSTONE™ *Select*



SCHISTCLAD CORNER PANEL



SCHISTCLAD Z PANEL



NATURAL END PANEL



SILLS AND CAPSTONE



80 X 400 X 40MM
(SINGLE BULLNOSE)



250 X 400 X 40MM
(SINGLE BULLNOSE)



300 X 400 X 40MM
(DOUBLE BULLNOSE)



550 X 550 X 40MM
(CAPSTONE)



RIVERSTONE

A NATURAL COLLECTION OF SMOOTH PREDOMINANTLY GREY RIVER STONE
AVAILABLE IN CRAFTSTONE™ *Select*



LOOSE STONES



GREEN MICA

GREEN-UNDERTONED GREY ENHANCED IN COLOUR BY NATURAL LIGHT
AVAILABLE IN CRAFTSTONE™ *Select* OR PANEL VERSIONS
(PANEL PICTURED)



SCHISTCLAD CORNER PANEL



SCHISTCLAD Z PANEL



NATURAL END PANEL



SILLS AND CAPSTONE



80 X 400 X 40MM
(SINGLE BULLNOSE)



250 X 400 X 40MM
(SINGLE BULLNOSE)



300 X 400 X 40MM
(DOUBLE BULLNOSE)



QUARRY STONE

DARK GREY WITH WHITE CRYSTALLINE AND INFREQUENT PEACH ACCENTS
AVAILABLE IN CRAFTSTONE™ *Select*



LOOSE STONES



TUMBLED TRAVERTINE

CLASSIC SHADES OF TRAVERTINE TUMBLED TO FORM RUSTICATED EDGES
AVAILABLE IN 12MM THICK EDGE-RENDERED TILES



PANEL



406 X 203

SILL



812 X 305 X 30

CORNER STONE



HONED TRAVERTINE

CLASSIC ITALIAN LOOK TRAVERTINE WITH SHARP EDGES
AVAILABLE IN 12MM THICK EDGE-RENDERED TILES



PANEL



406 X 203

SILL



812 X 305 X 30

CORNER STONE





o
TECHNICAL
SUPPORT

Craftstone™ are renowned for their experience and technical expertise in all aspects of real stone veneer cladding and landscaping features.

We provide architects and specifiers with New Zealand's only BRANZ appraised real stone veneer system. You have the comfort of knowing it has been independently and invasively tested and approved.



- Tested and approved for extra high wind zones
- Tested and approved for seismic stability in all earthquake zones
- BRANZ appraised and Building Code Compliant
- 100% natural stone cut from the earth - no risk of fading
- 15 year no nonsense product warranty

Craftstone have a wide variety of technical **detail drawings** to assist architects and specifiers in the specification of Craftstone on the most demanding of projects. PDF versions are available online, while .dwg, .dxf and .rvt files are available on request.

Our highly experienced **technical staff** are available to support architects, specifiers and other building professionals in every aspect of their stone installations. They will even respond to Council RFI's on your behalf.

Our experienced **Quantity Surveyor** will not only accurately establish quantities of stone for your project, but will also identify and recommend alternatives to save time and unnecessary costs on your projects.

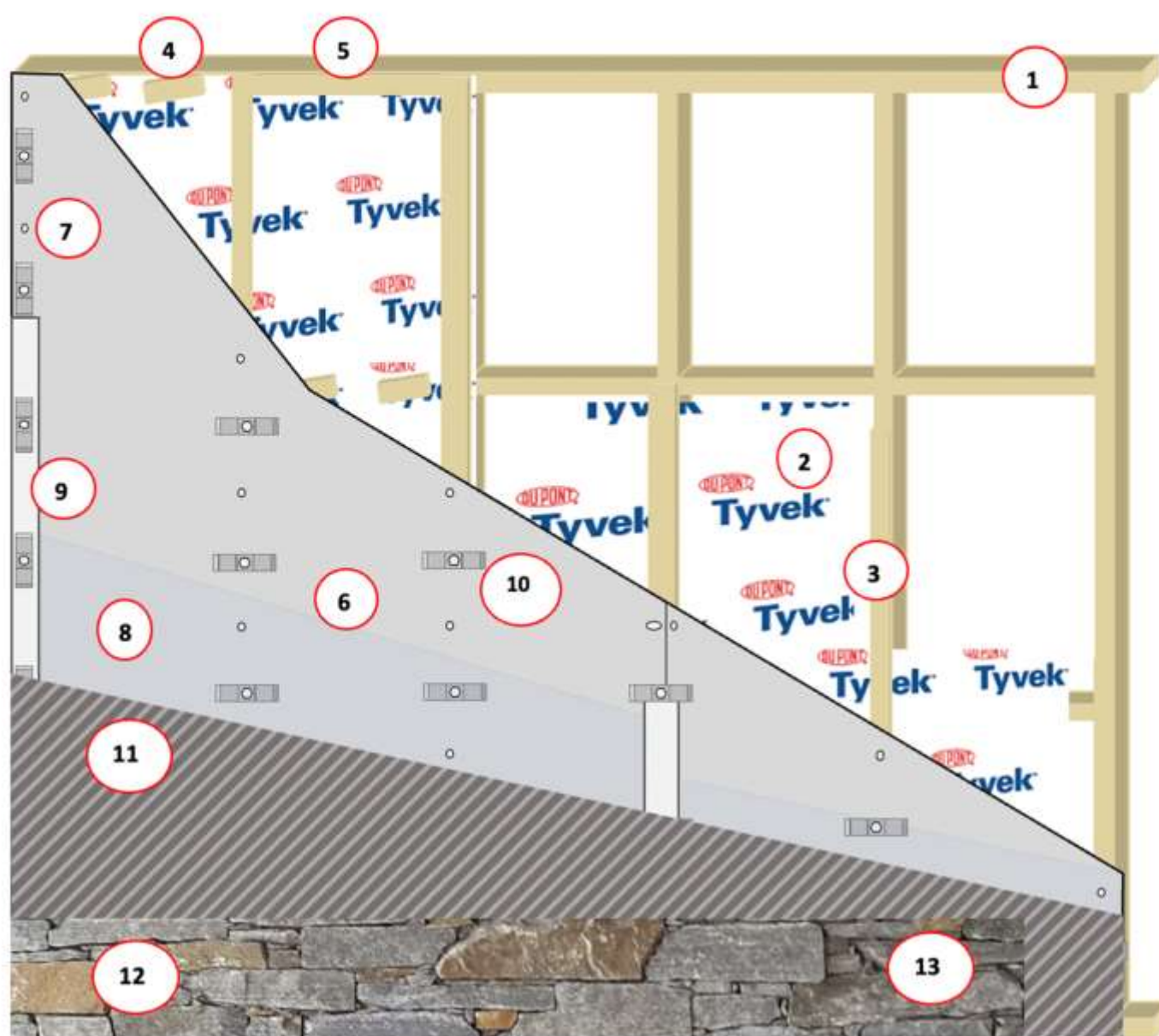
By specifying **Craftstone**, you can rely on having experienced experts behind you.
We earn our reputation by protecting yours.

PRODUCTSPEC

masterspec

SMARTSPEC

THE BRANZ APPRAISED SYSTEM



**CRAFT
STONE**
Real Stone Made Easy

BRANZ Appraised
Appraisal No.793 [2019]

- ① NZBC compliant [3604] framing with studs at 400mm centres
- ② Building wrap or RAB
- ③ Cavity battens (20mm nominal)
- ④ Packers 100mm long at minimum 5° angle; or
- ⑤ Castellated battens at same dimension as (3) above
- ⑥ 9.0mm fibre cement sheet complying with AS/NZS 2908.2 (available from Craftstone). Must be Craftstone approved as suitable for use as a stone substrate.
- ⑦ Stainless steel screws (10g x 65mm CSK square drive with a T17 tip) centred at 150mm on each stud in accordance with the board manufacturers specifications (also available from Craftstone).
- ⑧ Craftstone™ Sealer to inhibit moss and algae growth and to aid in cleaning, or Craftstone™ Sealer/ Enhancer to permanently darken the stone, inhibit moss and algae growth and aid cleaning.
- ⑨ Craftstone™ butyl tape and penetrating spray adhesive to all sheet joints
- ⑩ Craft Anchors at 300mm centres when required
- ⑪ Craftbond mortar adhesive
- ⑫ Any of Craftstone's range of light-weight and medium-weight real stone veneer cladding products
- ⑬ Craftstone™ Sealer. A clear penetrating silane siloxane formula

CRAFTSTONE FINISHES



BAGGED

Light bagging pictured. Stone (usually panels) overlaid with MPT ADOBECOAT, wet sponged to the desired depth.

STACKED STONE

Available in Craftstone Select™ or panel. Stones are selected and shaped to fit together to create a stacked appearance.



FLUSH POINTED

Mortar colour to be chosen by client. Off-white, shades of grey, black and adobe shades available. Pointing brought to level with stone.

POINTED

Mortar colour to be chosen by client. Off-white, shades of grey, black and adobe shades available. Stone slightly protrudes from pointing.



WIDE WHITE POINTED

Wider gaps between loose stone to allow for a greater proportion of mortar.

COLOURED POINTING

Mortar colour to be chosen by client. Off-white, shades of grey, black and adobe shades available.





SUITABLE SUBSTRATES

CRAFTSTONE FCB BY PRIMAFLEX

Application of stone veneer over fibre over fibre cement board over a 20mm cavity is the subject of our BRANZ Appraisal (793, 2019). 9mm Craftstone FCB by Primaflex is our preferred fibre cement substrate.

It has a good keying surface and a 100kg/m² face-load rating. We only recommend the use of autoclaved fibre cement boards with a face-load rating of at least 80kgs/m².

AAC PANEL

The AAC panels are overlaid with a layer of MPT BOND COAT, reinforced with alkali resistant fibreglass mesh, leaving a notched trowel finish.

The reinforced BOND COAT is then sealed with our silane siloxane penetrating sealer.

The stone is then bonded to the reinforced BOND COAT using Craftbond Mortar Adhesive.

TILT SLAB CONCRETE

If possible, have the tilt slab manufacturers leave an exposed aggregate finish where the stone is to be applied.

First remove all traces of release agent, then seal the surface with our proprietary silane siloxane penetrating sealer. The stone is then bonded directly to the surface of the tilt slab concrete using Craftbond Mortar Adhesive.

Any pre-existing paints or membrane sealers must first be removed before application of our penetrating sealer.

CONCRETE BLOCK

First remove all traces of release agent, then seal the with our proprietary silane siloxane penetrating sealer.

The stone is then bonded directly to the surface of the concrete block using Craftbond Mortar Adhesive.

Any pre-existing paints or membrane sealers must first be removed before application of our penetrating sealer.

POLYISOCYANURATE SHEET

The Polyisocyanurate sheet are overlaid with a layer of MPT BOND COAT, reinforced with alkali resistant fibreglass mesh, leaving a notched trowel finish.

The reinforced BOND COAT is then sealed with our silane siloxane penetrating sealer.

The stone is then bonded to the reinforced BOND COAT using Craftbond Mortar Adhesive.

BRICK

First remove all clinker protrusions with a scabbling disc, then seal the surface with our proprietary silane siloxane penetrating sealer.

The stone is then bonded directly to the surface of the brick using Craftbond Mortar Adhesive.

Any pre-existing paints or membrane sealers must first be removed before application of our penetrating sealer.

Some glazed brick may require additional surface preparation.

FORMED CONCRETE

First remove all traces of release agent, then seal the with our proprietary silane siloxane penetrating sealer.

The stone is then bonded directly to the surface of the formed concrete using Craftbond Mortar Adhesive.

Any pre-existing paints or membrane sealers must first be removed before application of our penetrating sealer.

POLYSTYRENE SHEET

The Polystyrene sheet are overlaid with a layer of MPT BOND COAT, reinforced with alkali resistant fibreglass mesh, leaving a notched trowel finish.

The reinforced BOND COAT is then sealed with our silane siloxane penetrating sealer.

The stone is then bonded to the reinforced BOND COAT using Craftbond Mortar Adhesive.

ICF PANEL

The ICF panels are overlaid with a layer of MPT BOND COAT, reinforced with alkali resistant fibreglass mesh, leaving a notched trowel finish.

The reinforced BOND COAT is then sealed with our silane siloxane penetrating sealer.

The stone is then bonded to the reinforced BOND COAT using Craftbond Mortar Adhesive.

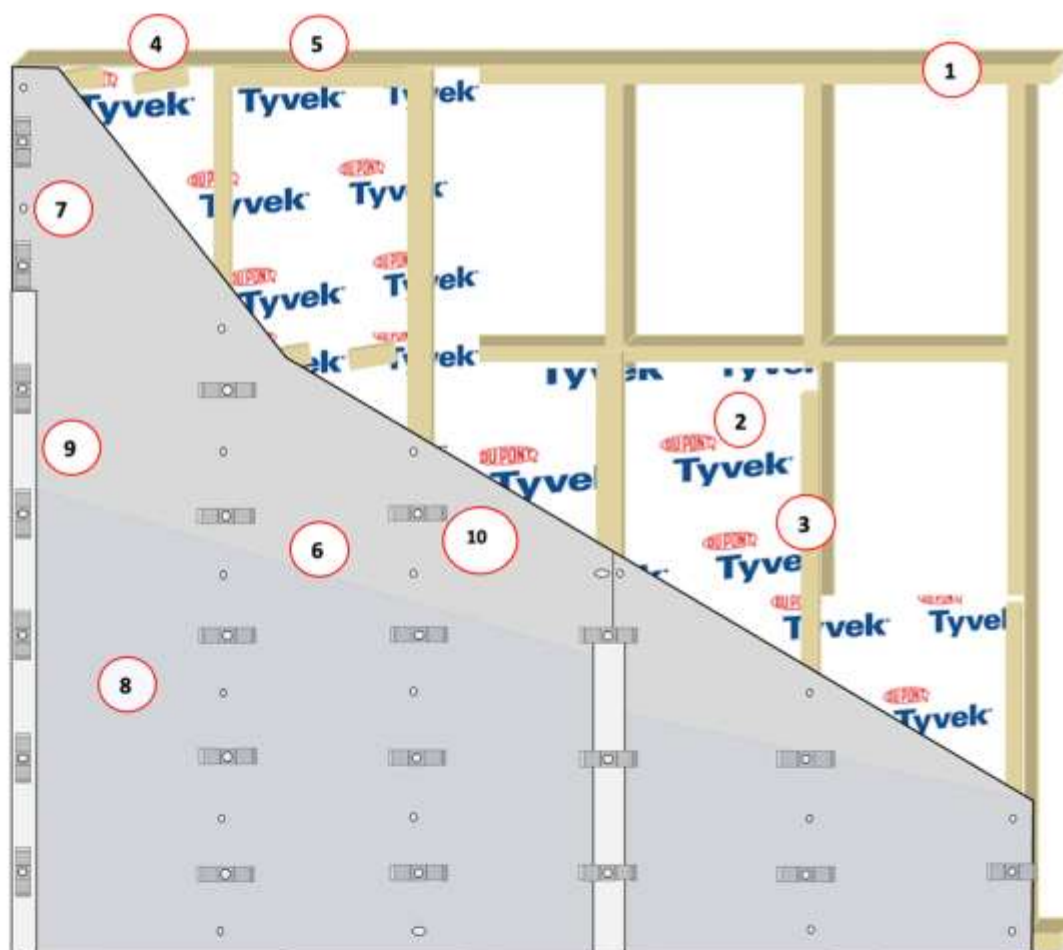
The above list is not exhaustive.

Please contact us if you are considering the use of an alternative substrate.

NOW AVAILABLE ON STEEL FRAMING

CRAFTSTONE FIBRE CEMENT BOARD

- 9mm fibre cement substrate designed for stone veneer and rated as capable of carrying up to 100kgs/m².
- Manufactured using flow-on technology for extra strength to reduce the risk of intra-board delamination
- Designed with a rough surface to aid in keying to Craftbond Mortar Adhesive.
- AS/NZS 2908.2 compliant
- Application of stone veneer over fibre cement board over a 20mm cavity is the subject of our BRANZ Appraisal (793 [2019]).



For numbers ① - ⑩
please refer to page 17



9mm Craftstone FCB is our preferred fibre cement substrate. We only recommend the use of autoclaved 9mm fibre cement boards with a face-load rating of at least 80kgs/m² and which retain their warranty when installed with the rough side facing outward.



Designed specifically for use with Craftstone FCB, these 65mm screws are CSK 10-gauge 304 stainless steel with a square drive and a T17 tip.

CRAFTSTONE PETRAPANEL AAC

Autoclaved Aerated Concrete panels are overlaid with a layer of MPT BOND COAT, reinforced with alkali resistant fibreglass mesh, leaving a notched trowel finish.

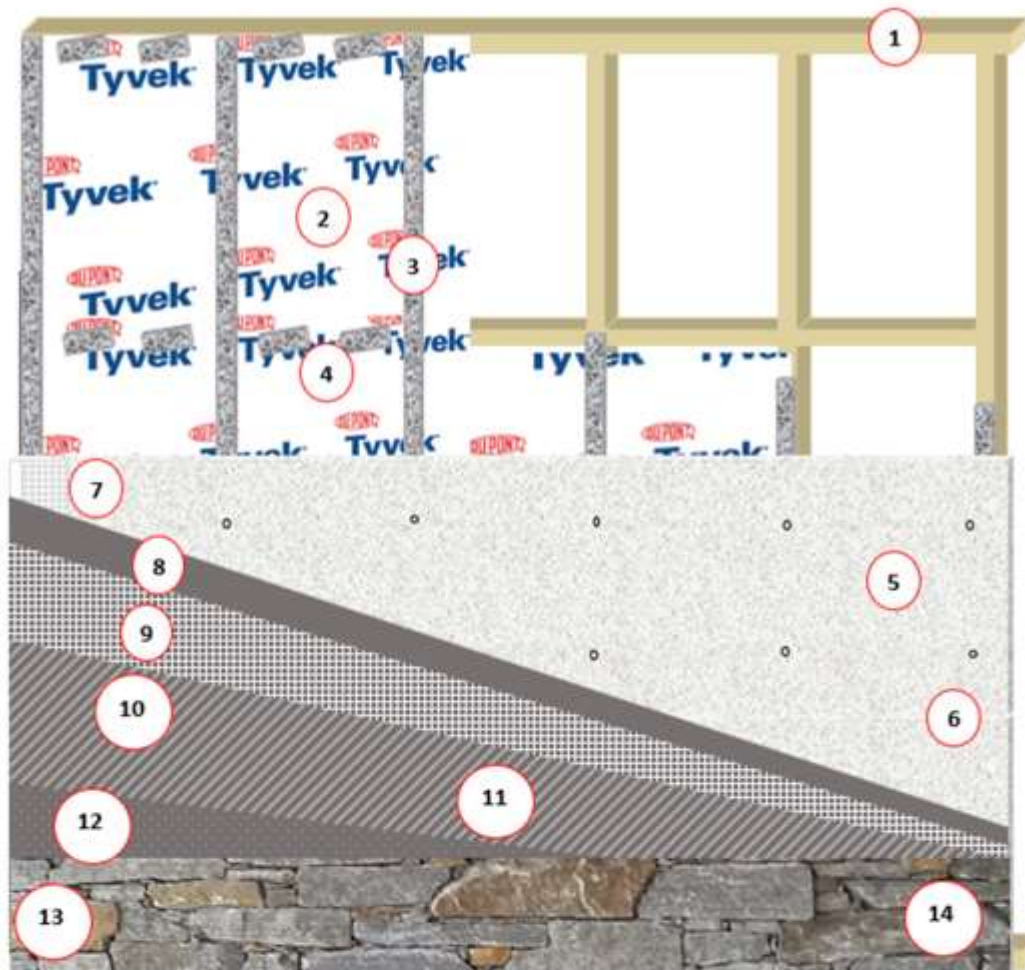
The reinforced BOND COAT is then sealed with our Craftstone penetrating sealer. The stone is then bonded using Craftbond Mortar Adhesive.

Petrapanel AAC is available in two panel dimensions:

50mm x 2200mm x 600mm

75mm x 1800mm x 600mm

AAC Panel is manufactured from sand, lime, cement, and water which is then activated with aluminium oxide. After mixing, the slurry is poured into moulds containing sheets of steel reinforcing mesh. The aluminium oxide reacts with the alkaline elements in the mixture producing hydrogen gas which forms fine air bubbles in the set block. This product is then cured under pressure in an autoclave before being cut to the required dimensions.



- ① NZBC compliant [3604] framing with studs at 400mm centres
- ② Building wrap or RAB
- ③ EPS (polystyrene) cavity battens
- ④ 100mm long cavity packers at minimum 5° tilt
- ⑤ MPT Petrapanel AAC (50mm or 75mm)
- ⑥ MPT AAC Panel Adhesive or Maxilam Sabre Fix PU

- ⑦ MPT Pre-meshed corner bead
- ⑧ MPT BOND COAT
- ⑨ MPT alkali-resistant fibreglass mesh
- ⑩ MPT BOND COAT notched troweled
- ⑪ MPT Amberseal penetrating sealer
- ⑫ Craftbond Mortar Adhesive
- ⑬ Client's choice of Craftstone veneer
- ⑭ Craftstone penetrating sealer



CRAFT STONE

Real Stone Made Easy



'Craftstone'[™] is a registered trademark of Petros Holdings Limited.

Freephone: 0800 63 88 99
Phone: 09 447 3918
Sales: sales@petros.co.nz
Technical Support: tech@petros.co.nz

61 Hillside Road
Wairau Valley
Auckland 0627
New Zealand