

touch
HANDLES

2024

Traditional & Transitional
Handle Collection

the finishing touch

Visit our Site



Get in Touch



to your traditional style cabinetry

Welcome to Touch Handles

Touch Handles is an Australian, Family owned brand providing high quality cabinetry handles & knobs to the trade.

This catalogue displays our range of both transitional and traditional style handles. Carefully designed & curated to cater for all styles & budgets. The range includes value-for-money handles that don't compromise on quality, through to luxury handmade handles and everything in between. There's something for everyone.

Our constantly evolving range is all available through your local cabinetmaker and can be viewed on the Touch Handles website.

Follow us on Instagram for all the latest additions & news.

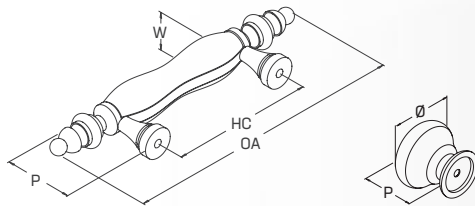
we can't wait to see your new cabinetry

Touch Handles x Dorset Australia.

Index

Transitional Collection	02-07
Hampton Collection	08-23
Porcelain Collection	24-27
Cast Iron Collection	28-40
Vintage Collection.....	41-43
Antique Collection.....	44-49

Key to Symbols



HC = Hole centre OA = Overall length W = Width
P = Projection Ø = Diameter

touch
HANDLES



Hailey Collection

- Finished by hand in the UK
- Straight line knurling
- Appliance Pull available for integrated appliances & large doors (not pictured)
- Material: Solid Brass



	Part No.	Finish	HC	OA	W	P
A	KB4214.30.BRBZ	Brushed Bronze	-	30 Ø	-	30
B	HN4213.128.BRBZ	Brushed Bronze	128	164	14	38
C	HN4213.192.BRBZ	Brushed Bronze	192	228	14	38
♦	HN4213.305.BRBZ	Brushed Bronze	305	356	20	52

♦ Not Pictured HC = Hole centre OA = Overall length W = Width P = Projection

Brushed Bronze





touch
HANDLES



Hailey

Deluxe
Collection



Henley



Ann Street Project, Edinburgh
by Bann Group,
Photography by ZAC and ZAC



Transitional Collection



F
Appliance Pull

E

D

C

B

A

Henley Collection

- Diamond knurling
- Appliance Pull available for integrated appliances & large doors
- Material: Solid Brass



Part No.	Finish	HC	OA	W	P
A KB4156.29.BSB	Brushed Satin Brass	-	29 Ø	-	29
B KB4156.35.BSB	Brushed Satin Brass	-	35 Ø	-	31
C HN4155.128.BSB	Brushed Satin Brass	128	168	12	34
D HN4155.160.BSB	Brushed Satin Brass	160	200	12	34
E HN4155.192.BSB	Brushed Satin Brass	192	232	12	34
F HN4155.305.BSB	Brushed Satin Brass	305	358	18	51

HC = Hole centre OA = Overall length W = Width P = Projection





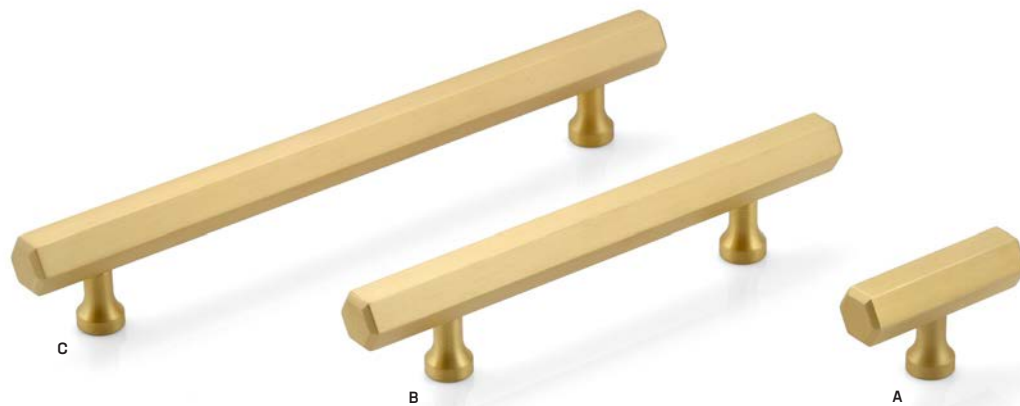
Hex Bar Handles - Polished Nickel

- Handcrafted in USA
- 9/16 size hexagonal bar handle
- Material: Solid Brass



	Part No.	Finish	HC	OA	W	P
A	H320.50.PN	Polished Nickel	-	50	14.5	32
B	H321.96.PN	Polished Nickel	96	153	14.5	32
C	H321.160.PN	Polished Nickel	160	203	14.5	32

HC = Hole centre OA = Overall length W = Width P = Projection



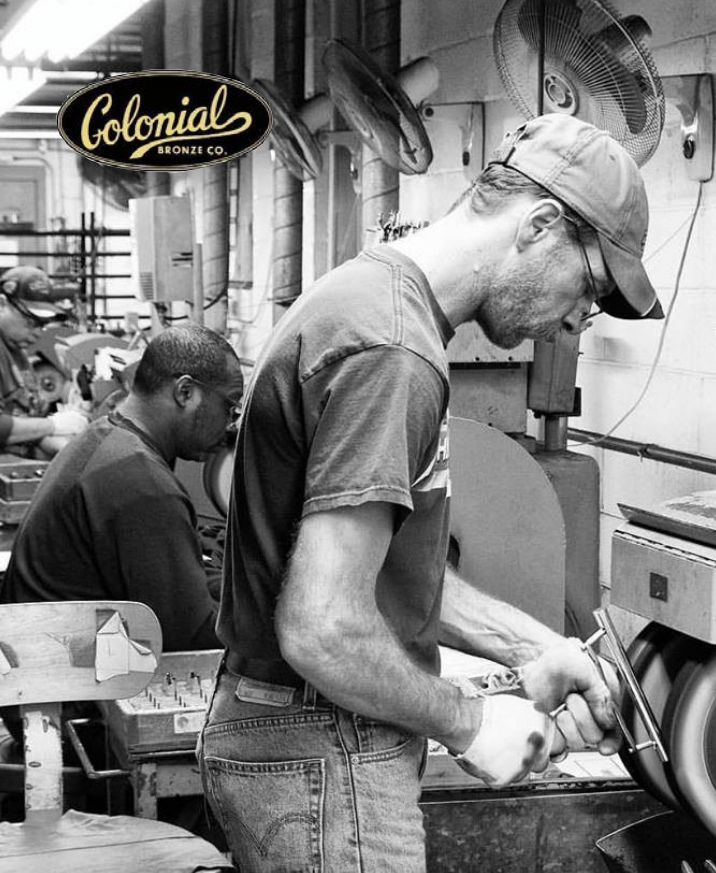
Hex Bar Handles - Satin Brass

- Handcrafted in USA
- 9/16 size hexagonal bar handle
- Material: Solid Brass



	Part No.	Finish	HC	OA	W	P
A	H320.50.SB	Satin Brass	-	50	14.5	32
B	H321.96.SB	Satin Brass	96	153	14.5	32
C	H321.160.SB	Satin Brass	160	203	14.5	32

HC = Hole centre OA = Overall length W = Width P = Projection



Deluxe
Collection

Hex Bar



Monmouth Collection - Brushed Satin Brass

- Available in cast iron - See Brecon Collection page 30
- Material: Zinc Alloy



	Part No.	Finish	HC	OA	W	P
A	KB3976.38.BSB	Brushed Satin Brass	-	38 Ø	-	32
B	HN3978.64.BSB	Brushed Satin Brass	64	104	48	30
C	HN3981.64.BSB	Brushed Satin Brass	64	104	48	30
D	HN3977.160.BSB	Brushed Satin Brass	160	232	20	26

HC = Hole centre OA = Overall length W = Width P = Projection



Monmouth Collection - Matt Black

- Available in cast iron - See Brecon Collection page 30
- Material: Zinc Alloy



	Part No.	Finish	HC	OA	W	P
A	KB3976.38.MBL	Matt Black	-	38 Ø	-	32
B	HN3978.64.MBL	Matt Black	64	104	48	30
C	HN3981.64.MBL	Matt Black	64	104	48	30
D	HN3977.160.MBL	Matt Black	160	232	20	26

HC = Hole centre OA = Overall length W = Width P = Projection

Hampton Collection



A



C



B



D

Monmouth Collection - Brushed Nickel

- Available in cast iron - See Brecon Collection page 30
- Material: Zinc Alloy



	Part No.	Finish	HC	OA	W	P
A	KB3976.38.BRN	Brushed Nickel	-	38 Ø	-	32
B	HN3978.64.BRN	Brushed Nickel	64	104	48	30
C	HN3981.64.BRN	Brushed Nickel	64	104	48	30
D	HN3977.160.BRN	Brushed Nickel	160	232	20	26

HC = Hole centre OA = Overall length W = Width P = Projection



Monmouth



Hampton Collection - Brushed Brass

• Material: Zinc Alloy

Part No.	Finish	HC	OA	W	P
A HMD2.160.BRB	Brushed Brass	160	168	15	27
B HMK2.032.BRB	Brushed Brass	-	31 Ø	33	35
C HMC2.160.BRB	Brushed Brass	160	195	42	25
D HMC2.076.BRB	Brushed Brass	76	107	42	23
E HMC2.050.BRB	Brushed Brass	50	77	34	19

HC = Hole centre OA = Overall length W = Width P = Projection

Hampton Collection - Brushed Aged Brass

• Material: Zinc Alloy

Part No.	Finish	HC	OA	W	P
A HMD2.160.BAB	Brushed Aged Brass	160	168	15	27
B HMK2.032.BAB	Brushed Aged Brass	-	31 Ø	33	35
C HMC2.076.BAB	Brushed Aged Brass	76	107	42	23

HC = Hole centre OA = Overall length W = Width P = Projection





Hampton



Hampton Collection - Dull Brushed Nickel

- Material: Zinc Alloy

Part No.	Finish	HC	OA	W	P
A HMD2.160.DBR	Dull Brushed Nickel	160	168	15	27
B HMK2.032.DBR	Dull Brushed Nickel	-	31 Ø	33	35
C HMC2.160.DBR	Dull Brushed Nickel	160	195	42	25
D HMC2.076.DBR	Dull Brushed Nickel	76	107	42	23
E HMC2.050.DBR	Dull Brushed Nickel	50	77	34	19

HC = Hole centre OA = Overall length W = Width P = Projection



Hampton Collection - Matt Black

- Material: Zinc Alloy

Part No.	Finish	HC	OA	W	P
A HMD2.160.MBL	Matt Black	160	168	15	27
B HMK2.032.MBL	Matt Black	-	31 Ø	33	35
C HMC2.160.MBL	Matt Black	160	195	42	25
D HMC2.076.MBL	Matt Black	76	107	42	23
E HMC2.050.MBL	Matt Black	50	77	34	19

HC = Hole centre OA = Overall length W = Width P = Projection



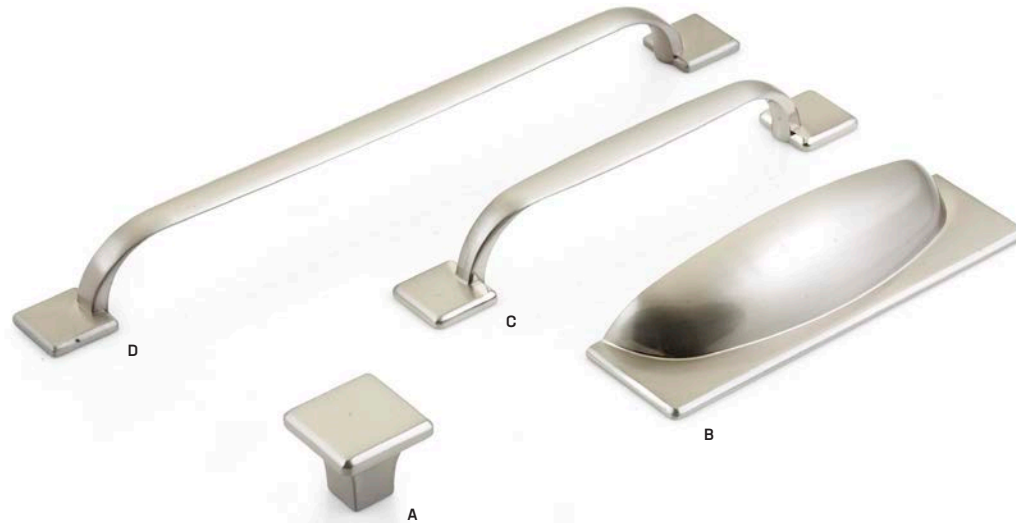
Hampton Collection - Polished Nickel

- Material: Zinc Alloy

Part No.	Finish	HC	OA	W	P
A HMD2.160.PN	Polished Nickel	160	168	15	27
B HMK2.032.PN	Polished Nickel	-	31 Ø	33	35
C HMC2.160.PN	Polished Nickel	160	195	42	25
D HMC2.076.PN	Polished Nickel	76	107	42	23
E HMC2.050.PN	Polished Nickel	50	77	34	19

HC = Hole centre OA = Overall length W = Width P = Projection





Georgia Collection - Brushed Nickel

- Available in cast iron - See George Collection page 28 - 29
- Material: Zinc Alloy

Part No.	Finish	HC	OA	W	P
A KB3840.32.BRN	Brushed Nickel	-	32	32	28
B HN3843.96.BRN	Brushed Nickel	96	145	41	27
C HN3841.128.BRN	Brushed Nickel	128	177	24	28
D HN3841.224.BRN	Brushed Nickel	224	268	24	28

HC = Hole centre OA = Overall length W = Width P = Projection



Georgia Collection - Chrome Plated

- Available in cast iron - See George Collection page 28 - 29
- Material: Zinc Alloy

Part No.	Finish	HC	OA	W	P
A KB3840.32.CP	Chrome Plated	-	32	32	28
B HN3843.96.CP	Chrome Plated	96	145	41	27
C HN3841.128.CP	Chrome Plated	128	177	24	28
D HN3841.224.CP	Chrome Plated	224	268	24	28

HC = Hole centre OA = Overall length W = Width P = Projection

Hampton Collection



Corbusier Collection Brushed Nickel

- Material: Zinc Alloy

	Part No.	Finish	HC	OA	W	P
A	KB3920.34.BRN	Brushed Nickel	-	34	34	23
B	HN3921.160.BRN	Brushed Nickel	160	174	14	34

HC = Hole centre OA = Overall length W = Width P = Projection



Corbusier Collection Chrome Plated

- Material: Zinc Alloy

	Part No.	Finish	HC	OA	W	P
A	KB3920.34.CP	Chrome Plated	-	34	34	23
B	HN3921.160.CP	Chrome Plated	160	174	14	34

HC = Hole centre OA = Overall length W = Width P = Projection



Traditional Shaker Kitchen
By Denby Kitchen Company

Corbusier



Mayfair D Handle - Brushed Brass

- Pair with the brushed brass Hampton Knob - see page 10
- Material: Zinc Alloy

Part No.	Finish	HC	OA	W	P
A MAY128.BRB	Brushed Brass	128	153	21	40
B MAY192.BRB	Brushed Brass	192	217	21	40
C MAY288.BRB	Brushed Brass	288	315	21	40

HC = Hole centre OA = Overall length W = Width P = Projection

Mayfair D Handle - Brushed Aged Brass

- Pair with the Brushed Aged Brass Hampton Knob - see page 10
- Material: Zinc Alloy

Part No.	Finish	HC	OA	W	P
A MAY128.BAB	Brushed Aged Brass	128	153	21	40
B MAY192.BRB	Brushed Aged Brass	192	217	21	40
C MAY288.BRB	Brushed Aged Brass	288	315	21	40

HC = Hole centre OA = Overall length W = Width P = Projection

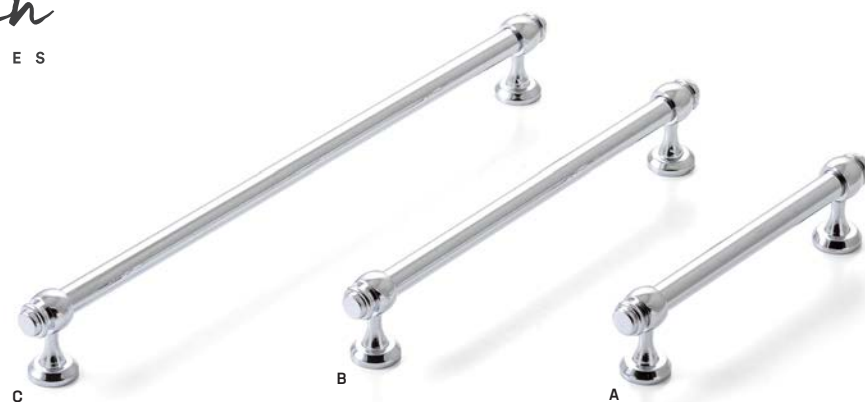




Coogee Project by True Build
Photography by Palm Co.



Mayfair



Mayfair D Handle - Chrome Plated

- Material: Zinc Alloy

Part No.	Finish	HC	OA	W	P
A MAY128.CP	Chrome Plated	128	153	21	40
B MAY192.CP	Chrome Plated	192	217	21	40
C MAY288.CP	Chrome Plated	288	315	21	40

HC = Hole centre OA = Overall length W = Width P = Projection



Mayfair D Handle - Matt Black

- Pair with the Matt Black Hampton Knob - see page 13
- Material: Zinc Alloy

Part No.	Finish	HC	OA	W	P
A MAY128.MBL	Matt Black	128	153	21	40
B MAY192.MBL	Matt Black	192	217	21	40
C MAY288.MBL	Matt Black	288	315	21	40

HC = Hole centre OA = Overall length W = Width P = Projection



Mayfair D Handle - Dull Brushed Nickel

- Pair with the Dull Brushed Nickel Hampton Knob - see page 13
- Material: Zinc Alloy

Part No.	Finish	HC	OA	W	P
A MAY128.DBR	Dull Brushed Nickel	128	153	21	40
B MAY192.DBR	Dull Brushed Nickel	192	217	21	40
C MAY288.DBR	Dull Brushed Nickel	288	315	21	40

HC = Hole centre OA = Overall length W = Width P = Projection



Cotswold Collection - Chrome Plated

- Material: Solid Brass
- Cotswold design available in Cast Iron - See the Winchester Collection page 38 - 39



Part No.	Finish	HC	OA	W	P
A KB4067.30.CP	Chrome Plated	-	34 Ø	-	28
B HN4068.128.CP	Chrome Plated	128	143	15	35
C HN4068.160.CP	Chrome Plated	160	175	15	35

HC = Hole centre OA = Overall length W = Width P = Projection



Calgary

Calgary Collection - Polished Nickel

- Material: Zinc Alloy

	Part No.	Finish	HC	OA	W	P
A	KB4163.35.PN	Polished Nickel	-	35 Ø	-	30
B	HN4160.128.PN	Polished Nickel	128	160	32	30

HC = Hole centre OA = Overall length W = Width P = Projection



Calgary Collection - American Bronze

- Material: Zinc Alloy



	Part No.	Finish	HC	OA	W	P
A	KB4163.35.ABZ	American Bronze	-	35 Ø	-	30
B	HN4160.128.ABZ	American Bronze	128	160	32	30

HC = Hole centre OA = Overall length W = Width P = Projection



American Bronze



Calgary Collection - Brushed Nickel

- Material: Zinc Alloy



	Part No.	Finish	HC	OA	W	P
A	KB4163.35.BRN	Brushed Nickel	-	35 Ø	-	30
B	HN4160.128.BRN	Brushed Nickel	128	160	32	30

HC = Hole centre OA = Overall length W = Width P = Projection



Calgary Collection - Matt Black

- Material: Zinc Alloy



	Part No.	Finish	HC	OA	W	P
A	KB4163.35.MBL	Matt Black	-	35 Ø	-	30
B	HN4160.128.MBL	Matt Black	128	160	32	30

HC = Hole centre OA = Overall length W = Width P = Projection



Calgary Collection - Brushed Satin Brass

- Material: Zinc Alloy



	Part No.	Finish	HC	OA	W	P
A	KB4163.35.BSB	Brushed Satin Brass	-	35 Ø	-	30
B	HN4160.128.BSB	Brushed Satin Brass	128	160	32	30

HC = Hole centre OA = Overall length W = Width P = Projection





Trianon



Trianon Collection - White Porcelain & Brushed Nickel

- Available in cast iron - See Bordeaux Collection page 36
- Material: Porcelain & Zinc Alloy

Part No.	Finish	HC	OA	W	P
A TCM3620.WHBRN	White & Brushed Nickel	-	35 Ø	-	32
B TCM3621.WHBRN	White & Brushed Nickel	-	90	25	42
C TCM3622.WHBRN	White & Brushed Nickel	128	154	25	40
D TCM3623.224.WHBRN	White & Brushed Nickel	224	245	62	32

HC = Hole centre OA = Overall length W = Width P = Projection



Trianon Collection Cream Crackle & Antique Brass

- Available in cast iron - See Bordeaux Collection page 36
- Material: Porcelain & Zinc Alloy

	Part No.	Finish	HC	OA	W	P
A	TCM3620.CRCRAB	Cream Crackle & Antique Brass	-	35 Ø	-	32
B	TCM3621.CRCRAB	Cream Crackle & Antique Brass	-	90	25	42
C	TCM3622.CRCRAB	Cream Crackle & Antique Brass	128	154	25	40
D	TCM3623.224.CRCRAB	Cream Crackle & Antique Brass	224	245	62	32

HC = Hole centre OA = Overall length W = Width P = Projection



Trianon Collection White Crackle & Pewter

- Available in cast iron - See Bordeaux Collection page 36
- Material: Porcelain & Zinc Alloy

	Part No.	Finish	HC	OA	W	P
A	TCM3620.WHCRPW	White Crackle & Pewter	-	35 Ø	-	32
B	TCM3621.WHCRPW	White Crackle & Pewter	-	90	25	42
C	TCM3622.WHCRPW	White Crackle & Pewter	128	154	25	40
D	TCM3623.224.WHCRPW	White Crackle & Pewter	224	245	62	32

HC = Hole centre OA = Overall length W = Width P = Projection



Trianon



George

Lower Plenty Project
Custom Finish George Handles
by Atco Interiors, Melbourne





George Collection

- Powdercoated Clear Iron finish for added protection
- Available in Brushed Nickel & Chrome Plated - See Georgia Collection page 14
- Material: Cast Iron

Part No.	Finish	HC	OA	W	P
A KB3849.32.PW	Pewter	-	32	32	28
B HN3851.96.PW	Pewter	96	145	41	27
C HN3850.128.PW	Pewter	128	177	24	28

HC = Hole centre OA = Overall length W = Width P = Projection



Brecon Collection

- Powdercoated Clear Iron finish for added protection
- Available in Brushed Brass, Dull Brushed Nickel & Matt Black Finish - See Monmouth Collection page 8 - 9
- Material: Cast Iron



Part No.	Finish	HC	OA	W	P
A KB3624.35.K0.PW	Pewter	-	35 Ø	-	33
B HN3925.64.PW	Pewter	64	104	48	30
C HN3924.128.PW	Pewter	128	193	26	20

HC = Hole centre OA = Overall length W = Width P = Projection



Windsor Collection

- Powdercoated Clear Iron finish for added protection
- Material: Cast Iron

Part No.	Finish	HC	OA	W	P
A KB3951.34.PW	Pewter	-	34	34	26
B HN3952.128.PW	Pewter	128	151	24	28
C HN3952.160.PW	Pewter	160	185	24	28

HC = Hole centre OA = Overall length W = Width P = Projection



Crosby Collection

- Powdercoated Clear Iron finish for added protection
- Material: Cast Iron

	Part No.	Finish	HC	OA	W	P
A	TJ3738.34.PW	Pewter	-	34 Ø	-	29
B	TJ3738.38.PW	Pewter	-	38 Ø	-	34
C	TJ3741.128.PW	Pewter	128	154	26	47
D	TJ3741.224.PW	Pewter	224	250	26	47

HC = Hole centre OA = Overall length W = Width P = Projection





Emma Collection - Aged Antique Brass

• Material: Cast Iron

Part No.	Finish	HC	OA	W	P	
A	TKNB230.35.AAB	Aged Antique Brass	-	35	18	26
B	TKNB230.58.AAB	Aged Antique Brass	32	58	18	26
C	TBP230.96.AAB	Aged Antique Brass	96	130	18	26
D	TBP230.128.AAB	Aged Antique Brass	128	162	18	26
E	TBP230.160.AAB	Aged Antique Brass	160	195	18	26
F	TBP230.320.AAB	Aged Antique Brass	320	355	18	26

HC = Hole centre OA = Overall length W = Width P = Projection



Emma Collection - Natural Iron

• Material: Cast Iron

Part No.	Finish	HC	OA	W	P	
A	TKNB230.35.NI	Natural Iron	-	35	18	26
B	TKNB230.58.NI	Natural Iron	32	58	18	26
C	TBP230.96.NI	Natural Iron	96	130	18	26
D	TBP230.128.NI	Natural Iron	128	162	18	26
E	TBP230.160.NI	Natural Iron	160	195	18	26
F	TBP230.320.NI	Natural Iron	320	355	18	26

HC = Hole centre OA = Overall length W = Width P = Projection



Tomi Collection

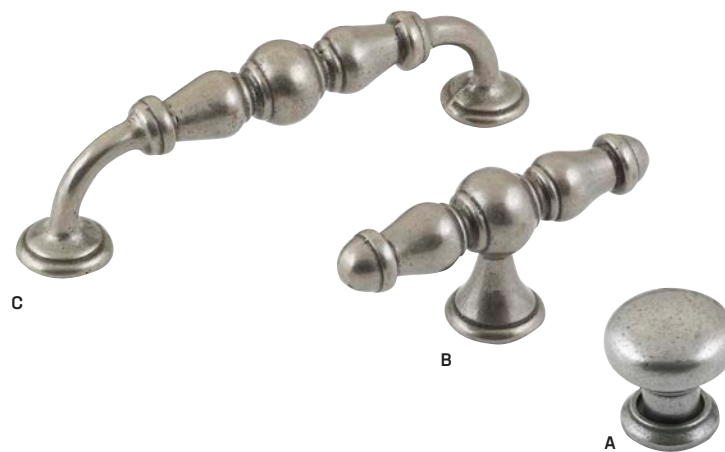
- Material: Cast Iron

Part No.	Finish	HC	OA	W	P
A TKNB280.30.NI	Natural Iron	-	33 Ø	-	31
B TTKNB280.90.NI	Natural Iron	-	90	26	53
C TDH280.128.NI	Natural Iron	128	155	26	41
D TDRH280.224.NI	Natural Iron	224	252	64	30

HC = Hole centre OA = Overall length W = Width P = Projection



Bordeaux



Bordeaux Collection

- Powdercoated Clear Iron finish for added protection
- Appliance Pull available for integrated appliances & large doors
- Available in Porcelain - See Trianon Collection page 24 - 25
- Material: Cast Iron

	Part No.	Finish	HC	OA	W	P
A	KB3624.35.PW	Pewter	-	35 Ø	-	37
B	KB3625.90.PW	Pewter	-	90	25	42
C	HN3626.128.PW	Pewter	128	153	25	40

HC = Hole centre OA = Overall length W = Width P = Projection

Cast Iron Collection



Appliance Pull

Montrose Collection

- Powdercoated Clear Iron finish for added protection
- Appliance Pull available for integrated appliances & large doors
- Material: Cast Iron

Part No.	Finish	HC	OA	W	P
A KB3885.32.PW	Pewter	-	32 Ø	-	35
B HN3887.128.PW	Pewter	128	149	20	39
C HN3887.203.PW	Pewter	203	234	20	43

HC = Hole centre OA = Overall length W = Width P = Projection



Montrose



Winchester





Winchester Collection

- Powdercoated Clear Iron finish for added protection
- Available in Chrome Plated - See the Cotswold Collection - Page 19
- Material: Cast Iron

Part No.	Finish	HC	OA	W	P
A KB3983.34.PW	Pewter	-	34 Ø	-	28
B HN3984.128.PW	Pewter	128	143	15	35
C HN3984.160.PW	Pewter	160	175	15	35

HC = Hole centre OA = Overall length W = Width P = Projection



Iron Bridge Collection

- Material: Cast Iron

	Part No.	Finish	HC	OA	W	P
A	TKNB120.32.NI	Natural Iron	-	32 Ø	-	21
B	TBP120.128.NI	Natural Iron	128	137	18	27
C	TBP120.203.NI	Natural Iron	203	211	18	30
D	TBP120.305.NI	Natural Iron	305	311	18	30

HC = Hole centre OA = Overall length W = Width P = Projection

Coloniale Collection - Old America

- Made in Italy
- Material: Zinc Alloy

Part No.	Finish	HC	OA	W	P
A T15.030.OA	Old America	-	30 Ø	-	24
B T15.128.OA	Old America	128	142	15	32

HC = Hole centre OA = Overall length W = Width P = Projection



Coloniale Collection - Pewter

- Made in Italy
- Material: Zinc Alloy

Part No.	Finish	HC	OA	W	P
A T15.030.PW	Pewter	-	30 Ø	-	24
B T15.128.PW	Pewter	128	142	15	32

HC = Hole centre OA = Overall length W = Width P = Projection





Royale Collection - Pewter

- Made in Italy
- Material: Zinc Alloy

	Part No.	Finish	HC	OA	W	P
A	T89.070.PW	Pewter	-	70	28	24
B	T89.064.PW	Pewter	64	97	53	24
C	T89.096.PW	Pewter	96	138	28	26

HC = Hole centre OA = Overall length W = Width P = Projection



Royale Collection - Antique Brass

- Made in Italy
- Material: Zinc Alloy

	Part No.	Finish	HC	OA	W	P
A	T89.070.AB	Antique Brass	-	70	28	24
B	T89.064.AB	Antique Brass	64	97	53	24
C	T89.096.AB	Antique Brass	96	138	28	26

HC = Hole centre OA = Overall length W = Width P = Projection

Sovereign Collection - Pewter

- Made in Italy
- Material: Zinc Alloy

Part No.	Finish	HC	OA	W	P
A T85.050.PW	Pewter	-	50	21	24
B T85.064.PW	Pewter	64	100	35	25
C T85.160.PW	Pewter	160	198	32	28

HC = Hole centre OA = Overall length W = Width P = Projection

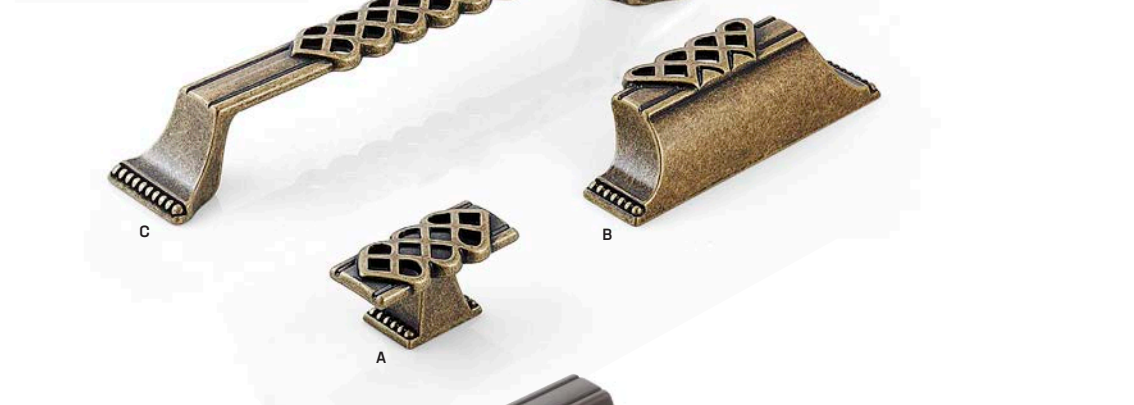


Sovereign Collection - Antique Brass

- Made in Italy
- Material: Zinc Alloy

Part No.	Finish	HC	OA	W	P
A T85.050.AB	Antique Brass	-	50	21	24
B T85.064.AB	Antique Brass	64	100	35	25
C T85.160.AB	Antique Brass	160	198	32	28

HC = Hole centre OA = Overall length W = Width P = Projection

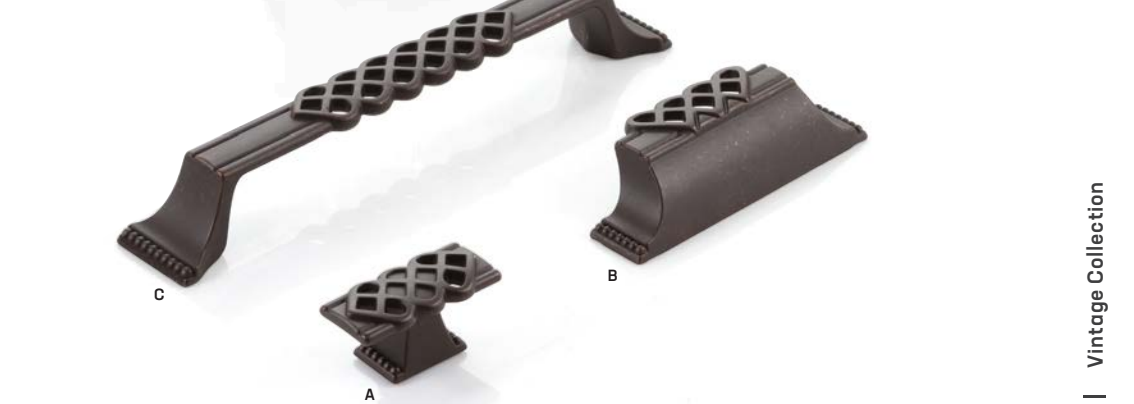


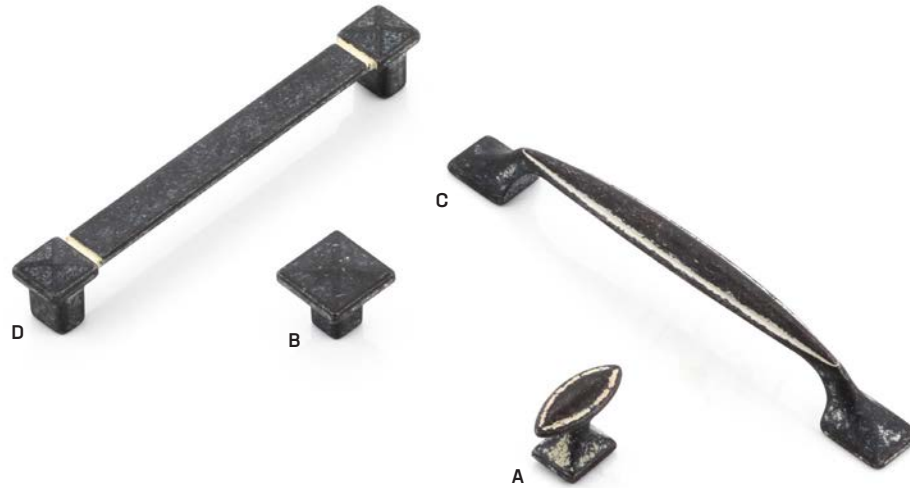
Sovereign Collection - Old America

- Made in Italy
- Material: Zinc Alloy

Part No.	Finish	HC	OA	W	P
A T85.050.OA	Old America	-	50	21	24
B T85.064.OA	Old America	64	100	35	25
C T85.160.OA	Old America	160	198	32	28

HC = Hole centre OA = Overall length W = Width P = Projection



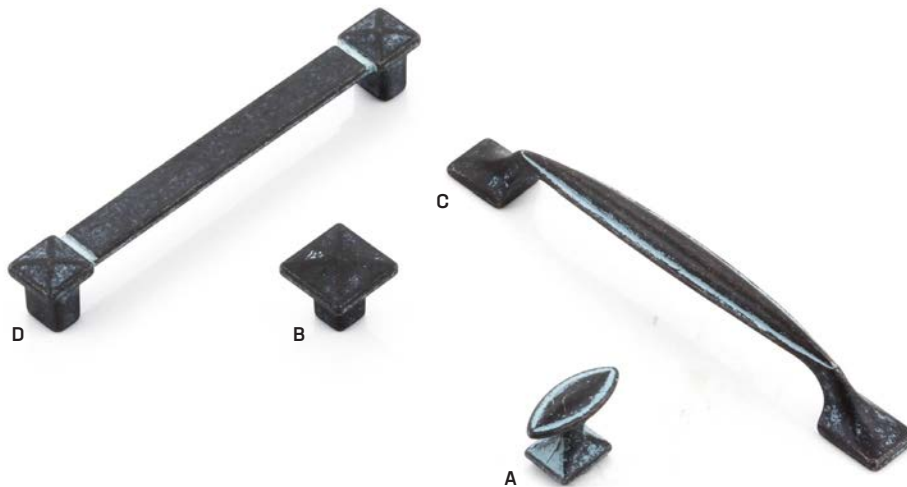


Kansas Collection - Antique Cream

- Made in Italy
- Material: Zinc Alloy

Part No.	Finish	HC	OA	W	P
A T114.ACR	Antique Cream	-	35	16	24
B T226.024.ACR	Antique Cream	-	25	25	22
C T214.128.ACR	Antique Cream	128	165	18	24
D T226.128.ACR	Antique Cream	128	145	18	22

HC = Hole centre OA = Overall length W = Width P = Projection



Kansas Collection - Antique Aqua

- Made in Italy
- Material: Zinc Alloy

Part No.	Finish	HC	OA	W	P
A T114.AAQ	Antique Aqua	-	35	16	24
B T226.024.AAQ	Antique Aqua	-	25	25	22
C T214.128.AAQ	Antique Aqua	128	165	18	24
D T226.128.AAQ	Antique Aqua	128	145	18	22

HC = Hole centre OA = Overall length W = Width P = Projection



Correa Project
by Poletti Custom Kitchens & Cabinets





B



A

Florenzia Collection - Brushed Gold

- Material: Zinc Alloy

Part No.	Finish	HC	OA	W	P
A CTCP.BRG	Brushed Gold	64	104	29	25
B CTMK.BRG	Brushed Gold	-	29 Ø	-	33

HC = Hole centre OA = Overall length W = Width P = Projection



Fort Street Kitchen, Launceston by Lydia Maskiell Interiors
Photographed by Ben Dilger

Florenzia Collection - European Pewter

- Material: Zinc Alloy

Part No.	Finish	HC	OA	W	P
A CTRP.EPW	European Pewter	76	138	21	25
B CTCP.EPW	European Pewter	64	104	29	25
C CTCK.EPW	European Pewter	-	33 Ø	-	26
D CTMK.EPW	European Pewter	-	29 Ø	-	33

HC = Hole centre OA = Overall length W = Width P = Projection



Florenzia Collection - Antique Brass

- Material: Zinc Alloy

Part No.	Finish	HC	OA	W	P
A CTRP.AB	Antique Brass	76	138	21	25
B CTCP.AB	Antique Brass	64	104	29	25
C CTCK.AB	Antique Brass	-	33 Ø	-	26
D CTMK.AB	Antique Brass	-	29 Ø	-	33

HC = Hole centre OA = Overall length W = Width P = Projection



Florenzia Collection - Charcoal

- Material: Zinc Alloy

Part No.	Finish	HC	OA	W	P
A CTRP.CH	Charcoal	76	138	21	25
B CTCP.CH	Charcoal	64	104	29	25
C CTCK.CH	Charcoal	-	33 Ø	-	26
D CTMK.CH	Charcoal	-	29 Ø	-	33

HC = Hole centre OA = Overall length W = Width P = Projection





Florencia Collection - Matt Black

- Material: Zinc Alloy

Part No.	Finish	HC	OA	W	P
A CTRP.MBL	Matt Black	76	138	21	25
B CTCP.MBL	Matt Black	64	104	29	25
C CTCK.MBL	Matt Black	-	33 Ø	-	26
D CTMK.MBL	Matt Black	-	29 Ø	-	33

HC = Hole centre OA = Overall length W = Width P = Projection



Florencia Collection Chrome Plated & Brushed Nickel

- Material: Zinc Alloy

Part No.	Finish	HC	OA	W	P
A CTCP.CP	Chrome Plated	64	104	29	25
B CTMK.CP	Chrome Plated	-	29 Ø	-	33
C CTCP.BRN	Brushed Nickel	64	104	29	25
D CTMK.BRN	Brushed Nickel	-	29 Ø	-	33

HC = Hole centre OA = Overall length W = Width P = Projection



Alisha Gore - Talm Beach House
Hand Towel from - Bed threads



Florenca



European Pewter finish pictured

The finishing touch

touch
HANDLES



Head Office & Distribution Centre: 143 Allingham Street,
Golden Square VIC 3555, Australia

Postal Address: PO Box 2290, Bendigo VIC 3554

Phone: 1300 121 800 | SMS: 0447 100 181
Email: hello@dorsetaustralia.com.au

