

Prefabulous

towards net zero

Modular architectural
design and construction



Strikingly architectural, devastatingly good-looking,
thoroughly finished, sustainable considered,
value for money, and ready before you know it.



Introduction

Prefabulous - Founded by Gavin King in 2018 with a philosophy for high quality modular design & construction.

The concept of prefabricated buildings reached a peak in the 1950's and 1960's when demand for housing and commercial buildings was at an all-time high in Australia. Today prefabricated construction as a manufactured process and product is more relevant now than ever. Prefabricated buildings & modules are built at our secure factory, delivered and then installed on site complete with kitchen, bathrooms, floor coverings, plumbing and electrical all included. This method allows greater control over the building process and efficiency in terms of materials, time and money. Through considered design, it encourages smarter living and a smaller footprint.

“Prefabulous arrived at 7am and by 1pm the delivery of 5 Tumut Hospital LIA buildings was completed. We were astounded by their precision and professionalism” Rhys Goodwin – Richard Crookes Construction

Design

First and foremost, we design and build highly desirable and beautiful spaces for sustainable living. Our spaces are architecturally designed to look fabulous and function well – for you and your environment.



Recent & Current Projects

- Net Zero Proto-type – This project is a Prefabulous Innovation for product development toward a net zero offering. The project is a collaboration of research co-funded by Aus-Industry Innovations Connections Program & Prefabulous with University of Wollongong – School of Sustainability currently engaged in the research that will lead to the construction of a Net Zero prototype commencing August 2023.
- Tumut Hospital (5 x Live-in Accommodation modules) – Subcontractor to Richard Crookes.
- June 2023 - NSW Govt Health Infrastructure Tender specified the TUMUT project by Prefabulous as their required standard for all regional health LIA projects a total of 49 single & double storey modules in Broken Hill, Cowra, Leeton, Cooma and West Wyalong.
- Riverina Oils – Staff Amenity Infrastructure.
- Condobolin RSL – Accommodation project – 9 interconnected single accommodation modules.
- Double Storey proto-type – 2 level LIA Accommodation design & development in progress.

Towards Net Zero

The evolution of design & product in 2023 is now in progress. This will take our product to the next level for design & quality to achieve Net zero functionality. Prefabulous embraces the future with the development of a Net zero product. The research & testing capability provided by the researchers at the University of Wollongong Sustainability School will provide Prefabulous with a template and standard of construction that will meet the highest of industry recognized standards such as NatHERS and The Living Building Challenge.

The research contract between Prefabulous & UOW commenced in March 2023 and will conclude in November 2023. UOW is currently working on our co-funded (Prefabulous & Aus-Industry) research program to the value of AUD\$130,000 to assess and specify materials, design functionality and measurables to achieve a net Zero Prototype – this will be complete assessment with a specification of affordable and sustainable materials & supply chains and measured embodied and operation carbon.

High quality prefabricated modular
buildings manufactured in a controlled
and secure environment.
Transported and installed by our team.

Capabilities

- Architectural Design for commercial and residential projects
- Interior Design
- Pre-built & off-Site Construction
- Installation & delivery of pre-built modules
- Project Management

Summary

Prefabulous is a modular architectural design firm & construction company based in Wagga Wagga. Located in Bomen, Wagga NSW.

Prefabulous offers a sustainable product targeting net zero principles. For residential and commercial tourism, defence, health, executive worker accommodation and affordable housing.

Prefabulous is projecting 5-fold growth for 2023 - 2026 as new manufacturing facilities are developed with the acquisition in August 2022 of 3.7 hectares of land in Bomen to meet growth and expansion requirements.

Prefabulous evolved from the expertise and experience of its unique team. Prefabulous principles aim to advantage the environment and become 'nature positive' with a 7-star rating for all Prefabulous buildings by 2023/2024.

Expertise within our company - Prefabulous is an architectural firm with qualified architects employed to develop our products and work directly with our clients.

The experience of Anh Nguyen in private practise and as the lead architect at Charles Sturt University for 10 years, has established a unique design signature and library of prefabricated designs for residential and commercial applications. Anh also has additional and recent qualifications in project management. His assistant Architect, a masters graduate from Deakin University, has international experience working in Europe and Far East. As a team the Prefabulous Architects have the capacity to offer full design services for commercial applications, including master-planning and co-ordination of all engineering and town-planning requirements.

Capabilities

Prefabulous constructs modular transportable buildings for commercial and domestic purposes at the factory in Bomen, Wagga. As a licensed builder, Prefabulous has a team of 30 full-time builders and contractors.

The building general manager Will Triggs, has broad construction experience including commercial Tier 2 construction in addition to long-standing residential experience. Rob Edwards builder & project manager has 30 years of building experience with at least 15 years' experience in the modular construction industry. Also on our team is Harry King commercial electrician and project manager.

The management team comprise founder Gavin King, with more than 30 years' experience in media, property development and the modular housing industry. Business partner Tim Rose Managing director of Southern Oil in Wagga & Gladstone is the co-investor of Prefabulous. With University qualifications in Chemical Engineering and Commerce. Catherine Brasier as Sales & Business Development Manager has worked in sales and property development with Ingenia Communities and Lendlease.

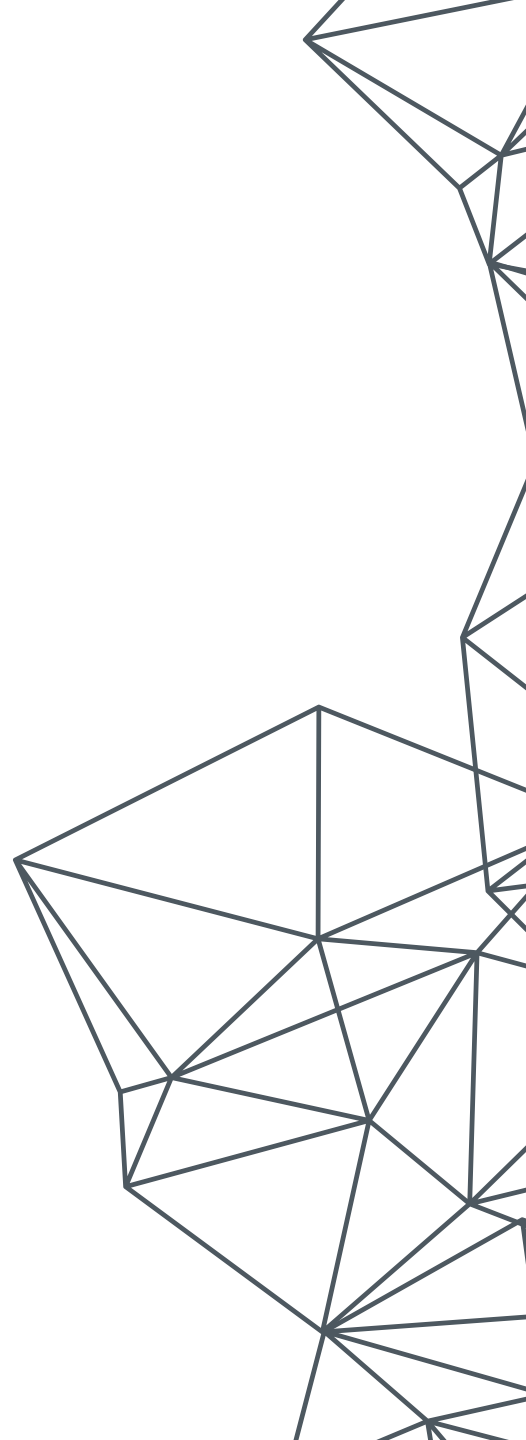
As a full service to our clients Prefabulous offers design, town-planning and certified footing system, and design, ready for installation of the completed modules. Prefabulous also co-ordinates the footings prior to delivery and dedicates its team to a full delivery and installation process.

All Prefabulous residential and commercial modules are built at the secure factory in Wagga. Our processes, standardisation and systems for higher volume manufacturing are at the forefront of planning for a new manufacturing facility to be constructed in 2024.

All modules are completed with kitchen, bathrooms, floor coverings, plumbing and electrical fit outs. This method allows greater quality control & efficiency over the building process. Projects include Southern Oil, VISY, Tumut Hospital, Malthouse.

Our team

fabulously
modern
spaces.





Meet Gavin King, the Managing Director of Prefabulous. If Prefabulous was a rock band, Gavin would be the front man, not for his singing or flashy dance moves, but because of his dedication to people and his remarkable strengths in the field. While Gavin's love for architecture and design fuels Prefabulous, his ability to connect with people and understand their needs and ideas sets him apart. With extensive experience in developing properties of various types, sizes, and price ranges, Gavin brings a wealth of knowledge to the table. His expertise includes specialised prefabricated constructions and culturally sensitive designs, showcasing his versatility and ability to deliver outstanding results. Beyond his professional achievements, Gavin's dedication to people and their experiences shines through. His ability to connect with individuals and understand their needs on a deeper level fosters strong relationships and effective collaboration. Gavin's empathetic and attentive approach makes him a trusted leader and an invaluable asset to both the team and clients of Prefabulous.

Meet Catherine Brasier, the Sales Manager at Prefabulous. With her background in Hotel Management, Wine Industry, and Property, she possesses a unique blend of skills and experiences that contribute to her success. One of Catherine's key strengths is her expertise in property development and sales for new projects in the retirement living and real estate sector.

Over the past 15 years, she has honed her knowledge and understanding of the industry, allowing her to navigate the intricacies of the market and effectively connect with potential clients. Catherine's passion for modular homes also sets her apart. She is a self-professed "modular home" nerd, meaning she possesses a deep interest and knowledge in this specific area. Moreover, Catherine's strong interpersonal skills and customer-centric approach make her an exceptional sales manager. She genuinely cares about the Prefabulous journey of each client and strives to ensure they experience the very best of what the company has to offer. Catherine is adept at understanding the unique needs and desires of customers, even when they may not be able to articulate them clearly. This skill allows her to tailor solutions and provide personalised recommendations, ultimately enhancing the customer experience.



Meet Will Triggs, our exceptional Builder at Prefabulous. At first glance, it may seem unusual to find a pearl diver knee-deep in sawdust, far away from the ocean. However, Will's unique background and remarkable strengths make him an invaluable member of our team. In his past life, amidst his ocean adventures, Will managed to acquire qualifications in carpentry, design, and furniture making. This diverse skill set sets him apart in the building industry. With 10 years of experience impressing clients with his keen eye for quality and innovative approach, Will has worked on high-end projects in Sydney's eastern suburbs, leaving a lasting impression wherever he goes. Five years ago, Will redirected his expertise towards prefab construction, bringing a fresh perspective to the industry. He is not only skilled in his craft but also passionate about Scandi-design, able to eloquently wax lyrical about its unique qualities. Will's enthusiasm and knowledge elevate the industry and contribute to making Prefabulous even more interesting and cutting-edge. What truly makes Will stand out is his ability to blend his craftsmanship with a creative and innovative mindset. His eye for quality and attention to detail ensure that every project he works on meets the highest standards. Will's passion for his work and dedication to delivering exceptional outcomes make him an indispensable member of our team, consistently pushing the boundaries of what is possible in prefab construction.

Meet Rob Edwards, a reliable and experienced member of our team who brings a strong work ethic and a passion for his craft. With a focus on honesty, respect, and dedication, Rob's contributions are highly valued. A typical day for Rob starts bright and early at 5am with a half-hour workout to kickstart his day. After a fulfilling breakfast, he prepares his meals for the day and aims to beat his colleague Triggsy to the office before 6:55am. Once at work, Rob takes charge of overseeing the team and subcontractors, ensuring the smooth flow of projects. His responsibilities include updating schedules, working on quoting, and estimating, and formulating strategic plans for construction and forecasting deliveries. Collaborating closely with colleagues like Will, Rob excels in project management, handling various aspects with ease. One of Rob's greatest strengths lies in his wealth of experience. With years of hands-on work and industry knowledge, he navigates complex projects effortlessly, providing valuable insights and solutions. Colleagues describe Rob as dependable and trustworthy, recognizing his consistent work ethic and unwavering reliability. Outside of work, Rob enjoys the freedom of the open road, embracing his adventurous spirit as he cruises on his Harley with a hint of spontaneity.



Introducing Anh Nguyen, our exceptional Design Manager at Prefabulous. While Anh may be quiet by nature, his design prowess speaks volumes. We can always count on him to bring the "wow" factor, often through subtle and unexpected means. Anh's strength lies in his ability to listen intently and understand the core requirements of a design project. He approaches each task with careful consideration and then proceeds to surprise and delight us with his remarkably creative and innovative solutions. Anh's knack for delivering ridiculously good design solutions sets him apart and leaves a lasting impression. With a wealth of experience across various roles in the industry, Anh brings a diverse perspective to his work. He has a particular passion for creating sensitive, elegantly resolved, and affordable designs for both residential and commercial spaces. Anh's commitment to excellence shines through in every project he undertakes, consistently delivering designs of the highest quality. Anh's unique blend of skills, including his ability to think outside the box and find elegant solutions, make him an invaluable asset to our team. His dedication to creating designs that not only meet but exceed expectations is evident in his work. Anh's creations have a transformative effect on spaces, elevating them to new levels of beauty and functionality.



Meet Vinal Sutariya, a talented and creative Design Assistant with a unique perspective and a passion for user-centric architecture. Vinal's strengths lie in her keen eye for detail and her drive to improve things. She excels in design and drafting tasks, working collaboratively with passionate and innovative design and construction teams to create better outcomes and enhance the built environment. Beyond her professional expertise, Vinal surprises many with her hidden talents in classical dance and poetry, which bring a creative flair and expressive spirit to her work and life. She finds inspiration in architectural platforms like Archdaily, Dezeen, and The Local Project, staying informed about the latest trends and innovations in her field. When not working, Vinal enjoys traveling, exploring new destinations, and immersing herself in different cultures.





Meet Harry King, our real-life hero and Project Manager extraordinaire. With a background as an electrician and more than 10 years of experience as an advanced volunteer firefighter, Harry brings a unique set of skills and a fearless attitude to our team. When Harry isn't out fighting actual fires or flexing his building muscles, he takes on building projects with confidence and expertise. As an experienced project manager, he excels in keeping projects running like clockwork. Harry has the remarkable ability to juggle multiple projects simultaneously, ensuring that everything progresses smoothly and efficiently. With Harry at the helm, you can trust that your build will be managed with precision and care. With his electrician background, Harry has extensive experience across various industries, including solar installations, mining, agriculture, fire systems, and transportable housing. His diverse expertise and knowledge enable him to handle a wide range of challenges and deliver exceptional results.

Meet Kerrie Williams, an experienced and adaptable team member who serves as both an Estimator and Finance Manager. With a focus on numbers, a love for learning, and a zest for life, Kerrie's contributions are highly valued in our workplace. She is dedicated and efficient in accomplishing her tasks, while also prioritising self-care and rest. Beyond her professional responsibilities, Kerrie possesses a hidden talent in horse riding and has even competed in the past, demonstrating her skills and passion for these magnificent creatures. Kerrie brings valuable skills to her role, including proficiency with numbers, a passion for continuous learning and adaptability, and a strong sense of motivation. Her precision and ability to embrace change are highly valued within our team.



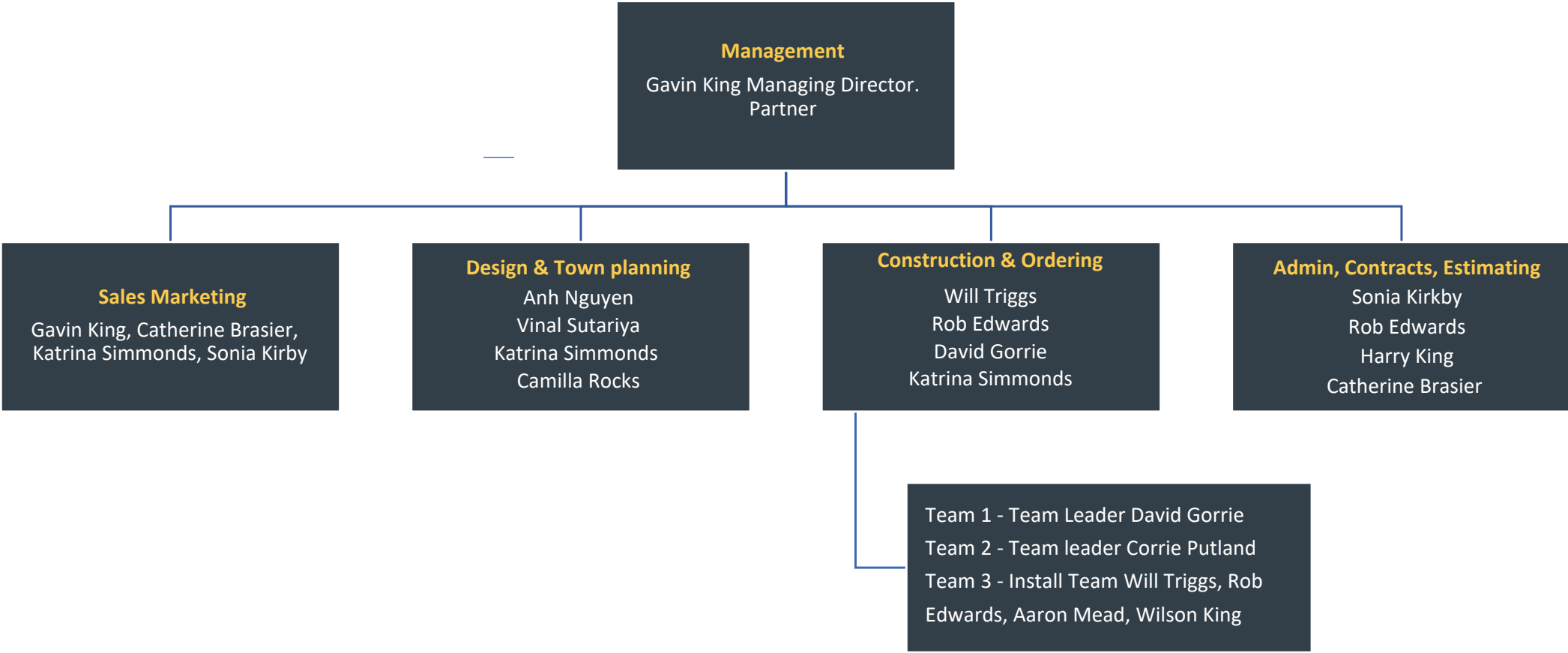
Meet Katrina Simmonds, a motivated and experienced member of our team specialising in Interior Selections. With a passion for interior design and a flair for organisation, Katrina brings a unique touch to our business. Katrina's day starts early, around 4:30 am, where she immerses herself in social media and side hustling jobs, leveraging her background in marketing and love for interior design. Her creativity and organisational skills are evident, and she even showcased her eye for design as a contestant on the TV show The Block. Motivated, organised, and determined are three words that perfectly describe Katrina. Her passion for interior design, organisational skills, and dedication makes her an invaluable member of our team, enhancing both our workplace and our clients' experiences.

Meet Sonia Kirby, a dynamic and passionate Administration Manager who adds a vibrant touch to our team. With an unwavering commitment to excellence, Sonia brings a unique set of skills and talents to our business. During her downtime, Sonia finds true happiness in horse riding in the Alpine National Park, particularly at Craig's Hut, where her adventurous spirit and love for nature collide. In the workplace, Sonia is a remarkable asset to our team. Her genuine desire to help people, coupled with her ability to strike up conversations with anyone, fosters an inclusive and welcoming environment. She brings a creative flair and an insatiable thirst for knowledge, constantly learning and adapting to new things.



Organisational Chart

Prefabulous



Construction



Prefabulous

Transportation



Prefabulous

& Installation



Prefabulous



DILIGENT, PROFESSIONAL,
PROUD OF OUR WORK, CARE
& CONTROL, PREPARATION
OF SITES



Prefabulous



Design



Prefabulous

Interior Styling

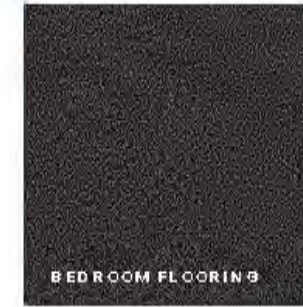
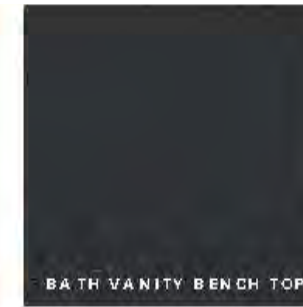
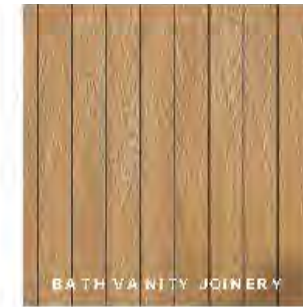
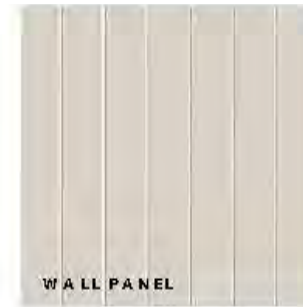


Prefabulous

Contemporary

Simplicity and subtle sophistication at its best. It's all about the space and form.

Clean lines, sleek finishes and beautiful neutral tones with a play on texture.

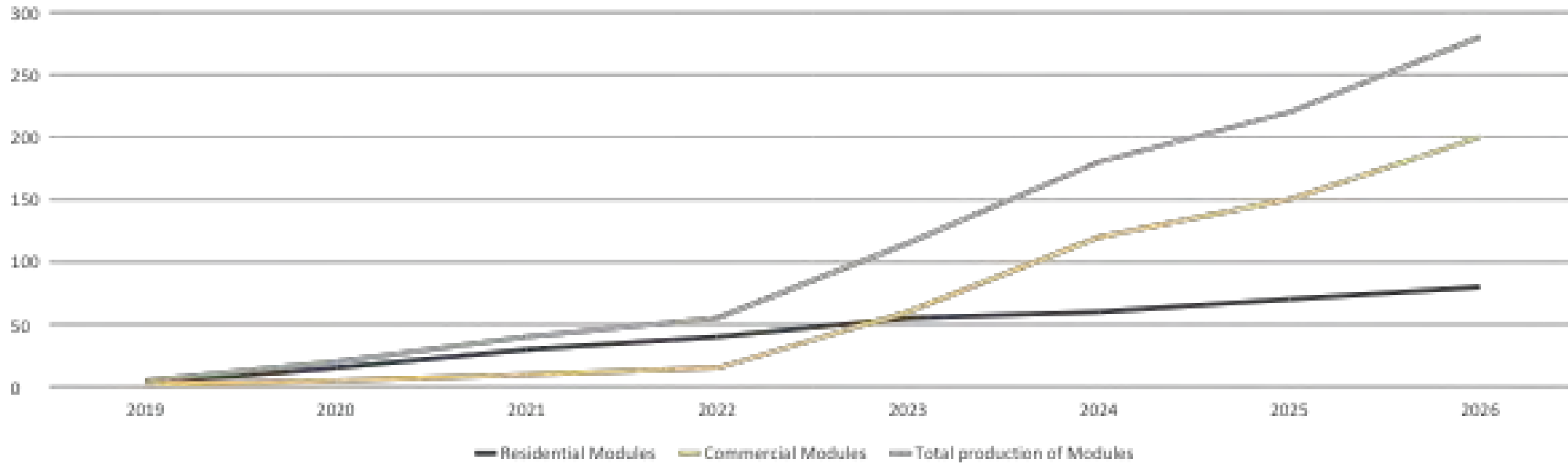


Prefabulous Capacity

Prefabulous

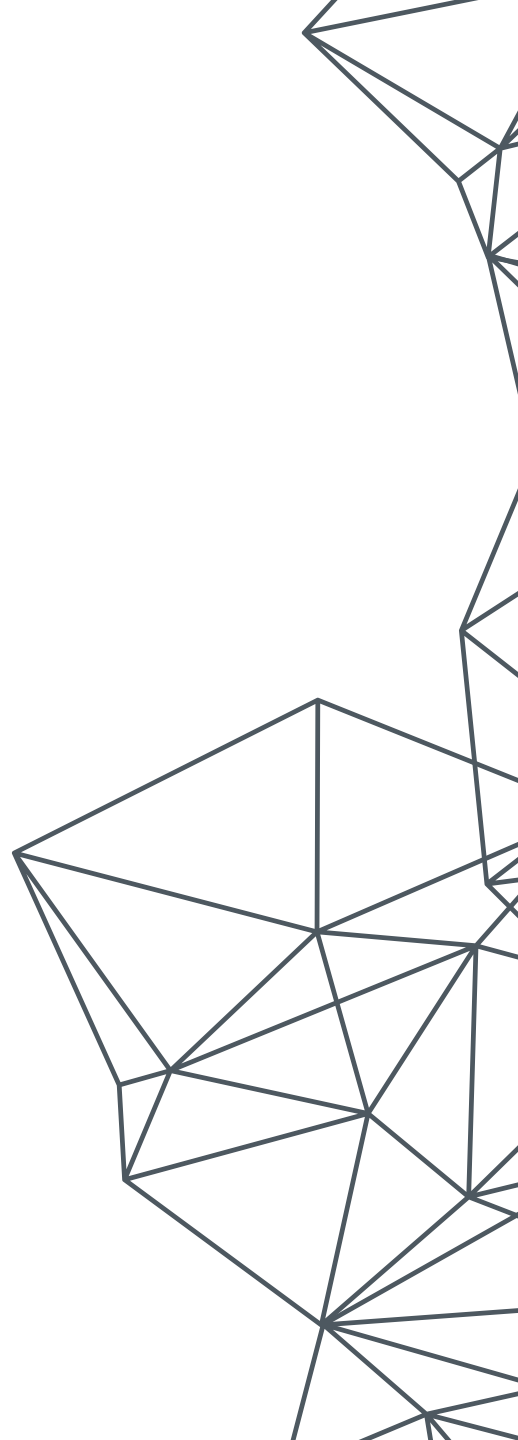
Prefabulous has a committed pipeline of commercial clients that will substantially increase capacity and production.

Growth Forecast



To the future

fabulously
modern
spaces.



Growth for large scale production by Prefabulous is planned for 2023 - 2026

New manufacturing facilities are developed with the acquisition in August 2022 of 37,000 square metres of land in Bomen to meet growth.

Current Prefabulous Site - 28 Bomen Road
8000 sqm



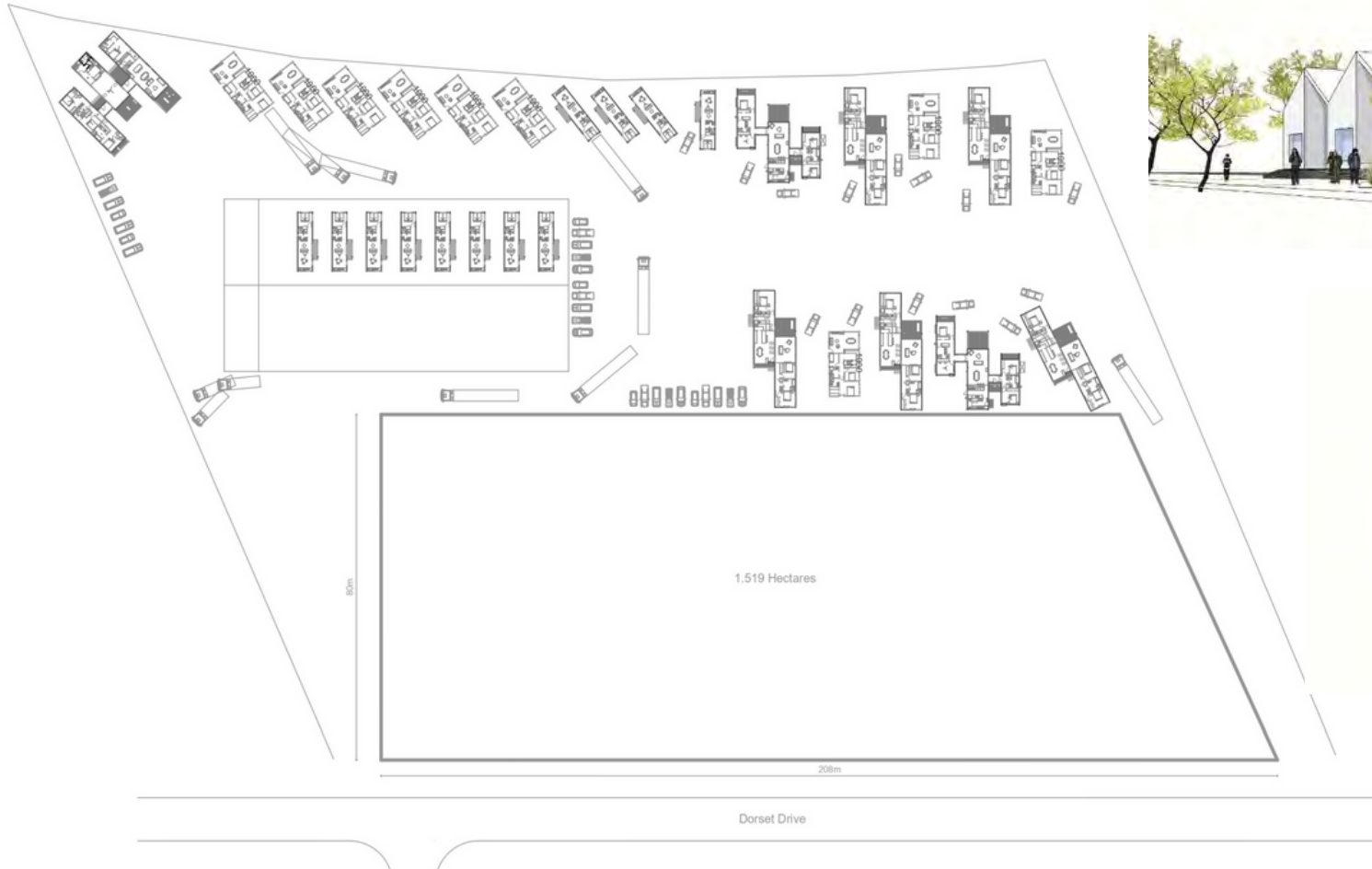
Prefabulous

New Prefabulous Manufacturing site - 101 Dorset Drive Bomen
37,000 sqm



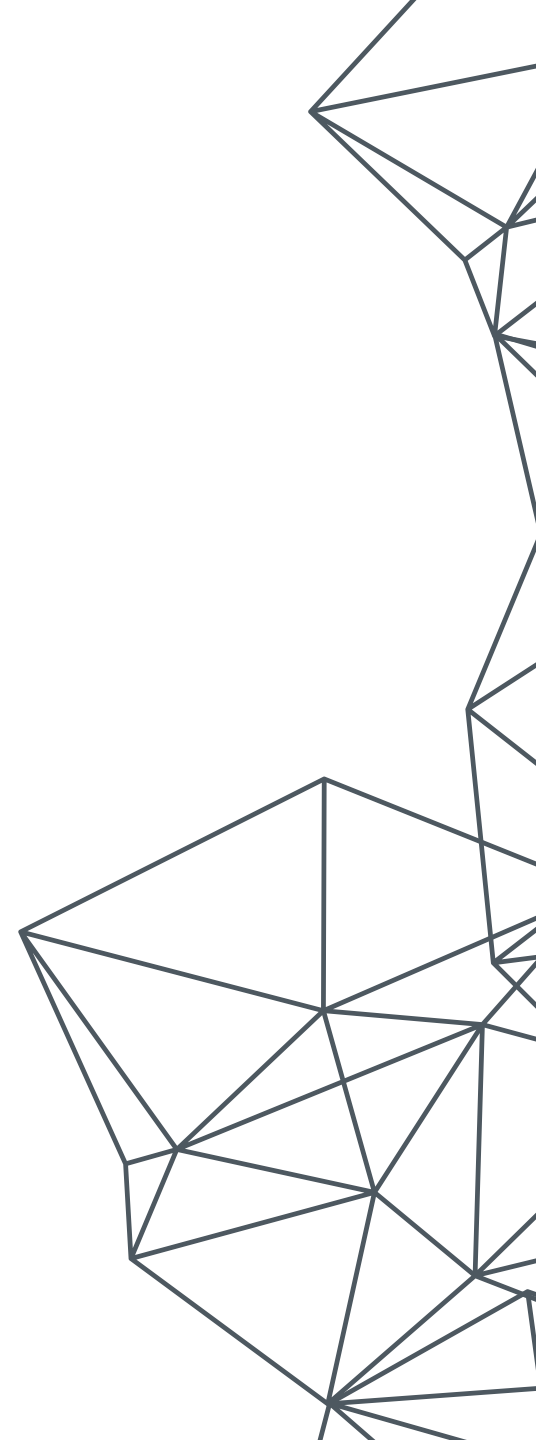
Prefabulous Headquarters

Site Layout



Excellence in Sustainability

fabulously
modern
spaces.



EXCELLENCE IN INNOVATION



Prefabulous is an innovative prefabricated construction business. We design, construct, transport and install high-quality sustainable buildings, manufactured in Wagga Wagga. We combine efficient and aesthetic design with sustainable construction, resulting in a product nearing Carbon Net Zero.

Prefabulous is committed to sustainable construction. We have partnered with government, a university and a commercial end-user on a sustainability project to develop a Carbon Net Zero prototype. Through this innovative approach we will produce a completely Carbon Net Zero housing product, develop smart manufacturing and establish supply chain efficiency at a high volume to meet the building demands of the future.

HOW WE IMPLEMENT INNOVATION

Prefabulous is committed to developing the most sustainable construction techniques and materials through innovation. We have partnered with the Australian Government, the University of Wollongong and Ingenia Holiday Parks on an innovative sustainability project to develop a Carbon Net Zero prototype. The goals of this project are:

- To produce the most energy efficient buildings possible
- Combine sustainability with aesthetically attractive buildings
- Inclusion of off-grid principles
- To design durable and robust buildings through using superior construction methods and materials
- To produce a completely Carbon Net Zero building methodology
- Affordability, by providing quality and unique designs at a range of price points.

This project is a significant step towards meeting Australia's sustainability targets by limiting the negative environmental impacts of the construction industry. We are on track to begin construction of our Carbon Net Zero prototype in August 2023, which will establish a new national best practice for Carbon Net Zero construction.

This prototype will be installed in the Ingenia Holiday Park on Hammond Ave, Wagga Wagga. It will showcase Carbon Net Zero construction for the public. It is exciting for the City of Wagga Wagga to be the centre for such an exciting, innovative, impactful and important project.



INNOVATION IS UNIQUE WITHIN OUR INDUSTRY

At Prefabulous, we combine efficient and aesthetic design with sustainable construction, resulting in a product targeting Carbon Net Zero principles. Our product is unique due to the following innovations:

- Using high energy efficient recyclable natural materials, including best in class low carbon and green tag materials that reduce the impact on the environment
- Having fully qualified designers and architects on staff, allowing us to design for manufacture
- Implementing innovative low-cost and energy efficient heating and cooling solutions
- Using flexible designs that can be customised for purpose, e.g., snow weight bearing roofs and extreme wind tolerances for alpine buildings
- Producing low maintenance interiors and exteriors
- Adopting design and construction principles that allow for delivery and installation to rural and remote locations, including in space limited areas.

Additionally, our buildings are constructed using premium welded steel. This allows for stronger and more robust buildings, that can be transported and craned into more remote and difficult-to-access locations. Our buildings are highly engineered and therefore can be two stories, are white-ant resistant and are built to last in harsh environments.

These qualities are not possible with timber framed, off-the-plan, prefabricated buildings. Furthermore, traditional prefabricated companies do not meet the specifications that commercial and government clients are seeking. The flexibility and quality of our product means that we can service practically every client.

INNOVATION SUCCESS

At Prefabulous, innovation and sustainability are central to everything we do; our innovations are driven by the market, our workforce and external stakeholders.

The Market

Our strategy is to inspire, inform and educate customers regarding our modular pre-built design and construction alternative. With innovative designs and quality buildings, the philosophy behind our product is to create affordable and sustainable architecturally designed buildings. Having only been in business for three years, our revenue increased by 50% in our second year and another 67% in our third. Additionally, due to the unique qualities of our product, which is favourable to commercial and government building requirements, these clients are the fastest growing component of our business.

Workforce

Our workforce is vital to our success and to achieve our business strategy. We have created an environment where our staff are able to express and explore new ideas and innovations, from both efficiency and sustainability perspectives. This workplace culture helps us to maintain our quality workforce and continue to grow. Prefabulous currently employs 19 FTE in addition to over 30 sub-contractors which includes electricians, plumbers, transport drivers, crane operators etc.

External Stakeholders

Our Carbon Net Zero project with the Australian Government, the University of Wollongong and Ingenia Holiday Parks demonstrates our enthusiasm for working with external stakeholders on innovative solutions, particularly to drive sustainable construction techniques and materials.

This is not just another research project that will end up on the shelf; it will create a very tangible prototype that will deliver significant environmental outcomes through both energy efficiency and sustainable building practices. The aim is to produce a completely Carbon Net Zero housing product, develop smart manufacturing and establish supply chain efficiency, at a high volume, to meet growing building demands.



POSITIVE IMPACT

The buildings that Prefabulous produce are high-quality and sustainable with numerous unique qualities. We are setting the standard for construction that minimises the impact on the environment, while being aesthetically pleasing, flexible in purpose and deliverable to almost any location. This in itself demonstrates how our innovation is having a positive impact on our business, industry and community.

Our partnership with the Australian Government, the University of Wollongong and Ingenia Holiday Parks to develop a Carbon Net Zero prototype is further evidence of this. This will also assist Australia to meet its' obligations towards the United Nations Sustainable Development Goals, though minimising the environmental impact of the construction industry.

Another aim of this project is to develop advanced manufacturing to help meet demand for our unique product. This will involve converting our current construction process to a manufacturing process. We have engaged Lean Manufacturing experts TXM Solutions, globally recognised efficiency experts, to design our new facility and production systems.

Our projections indicate that this would increase our current capacity by almost triple, enabling us to service not only NSW but also Victoria, South Australia and the ACT with relative ease. This will allow us to fully meet the increasing demand for our product.

Other positive impacts derived from this innovation would include:

- Being able to deploy quality emergency housing at short notice. We estimate that we could re-divert production capacity for emergency situations with 2 weeks.
- The quality of our construction also allows for us to assist with reconstruction processes that are permanent, rather than temporary. This includes assisting with the worker and onsite accommodation.
- Our buildings are reusable and due to using high-quality welded steel construction, they are also relocatable. This makes our unique product ideal for worker and onsite accommodation for mining, construction and infrastructure projects. Being able to move such buildings to other sites and projects reduces costs and lessens the environmental impacts of further construction, demolition and landfill costs.
- Supporting and growing Agribusiness through upgrading manager and worker accommodation on farms. The costs associated with employing traditional builders to work on these sites is considerable, due to the isolation of such properties.

INNOVATION EVIDENCE

Sustainable practices are vital to who we are as a business. In order to keep up with the cutting-edge technology and developments applicable to sustainable construction, it is imperative that we developed a culture of innovation and continuous improvement. We are a young company and this has been a key driver to our growth and success so far.

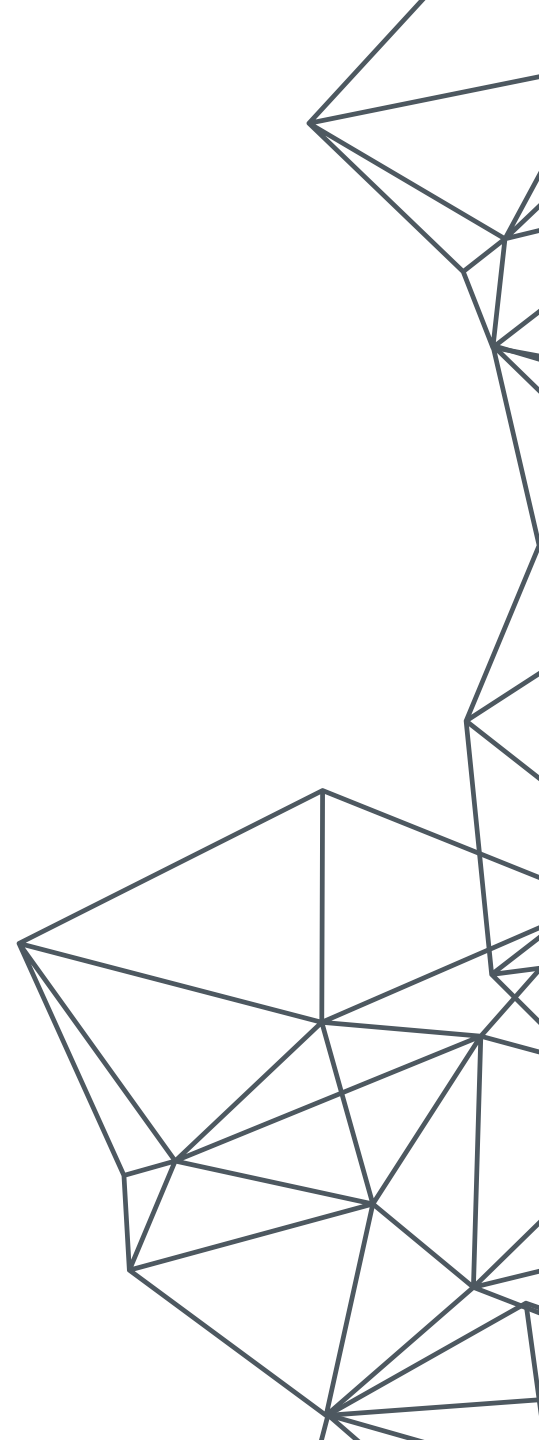
We set out to be industry leaders in Carbon Net Zero and sustainable construction and have largely achieved this. Our partnership with the Australian Government, the University of Wollongong and Ingenia Holiday Parks demonstrates this. We are leading the way and filling a significant gap in the market, as the world transitions to a more sustainable and Carbon Net Zero future. As such, we have attracted large publicly listed companies to collaborate with us and to purchase substantial quantities of buildings, that they require for this future.

Demand for our product has expanded exponentially over the last three years. Our turnover increased 50% from Year 1 to Year 2. It further increased another 67% from Year 2 to Year 3. As a result, we have purchased 3.7 hectares of land to allow us to create capacity for larger scale production. We are also in the process of developing an advanced manufacturing facility to keep meeting our continuously increasing demand.

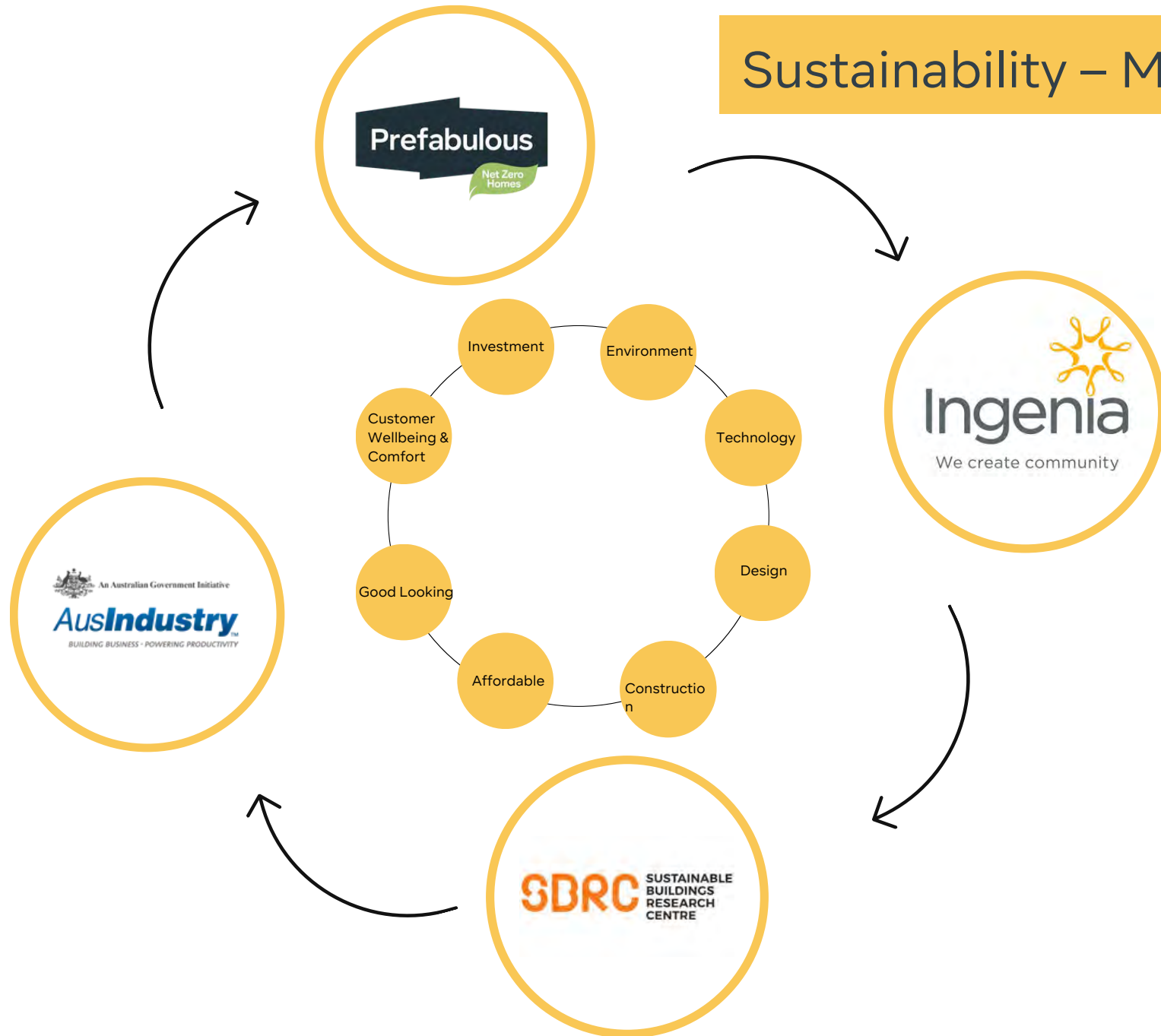


Shooting for Net Zero

fabulously
modern
spaces.



Sustainability – Moving toward Net Zero



Achieving sustainability is a partnership. In 2023 a partnership involving government, research and commercial user for their customer will result in the development of a Net Zero Prototype and evolution for Prefabulous.

Shooting for Net Zero

Prefabulous has been granted funding approval by the Federal Government's Aus-Industry Department and Innovations Connections initiative, for a co-funded research project with UOW (University of Wollongong). The project is for a 'Net Zero' design & specification to achieve the highest possible level under the 'Living Building Challenge' guidelines or equivalent NatHERS 7 star rating. The research commenced in February 2023 and will conclude in November 2023. The research and information as a result of the UOW collaboration with Prefabulous is anticipated to become the foundation and blueprint for a Prefabulous 'prototype' representing a template for the future of 'Net Zero' construction by Prefabulous.

"This will be template for our new manufacturing facility at Wagga Wagga and will align our design & construction methodology with the future Building Code for operational carbon & energy performance reduction in Australia" *

Following the research results Ingenia Holidays, an Australia-wide owner and operator of Holiday & Tourism parks, is partnering with Prefabulous for the construction of a Net Zero 2-bedroom prototype.

The Prefabulous Net Zero project is truly an end-to-end commercial research project and a collaboration of the following teams and businesses:

1. PHD qualified researchers from UOW and the Sustainability School (SBRC)
2. Prefabulous architects and builders
3. Ingenia Holidays.
4. Australian Government – Innovation Connections program

"Ingenia's commitment is really key for this project to come to life and showcase the research, design and construction in real terms, as the prototype will ultimately be used by their customers for a net zero holiday experience. They gave their commitment from the very beginning and will be involved every step of the way" *

Net Zero Goals

- High Energy efficiency including Off grid capability
- Recyclable & Sustainable materials
- Best in class low embodied energy and green tag materials
- Reducing impact on environment
- Innovative low-cost heating and cooling solutions
- Durable & Low maintenance interior and exterior
- Affordable
- Aesthetics – It's gotta look good!



01 Perspective
Scale 1:nts

Project Name.

05/06/2023

Revisions

C

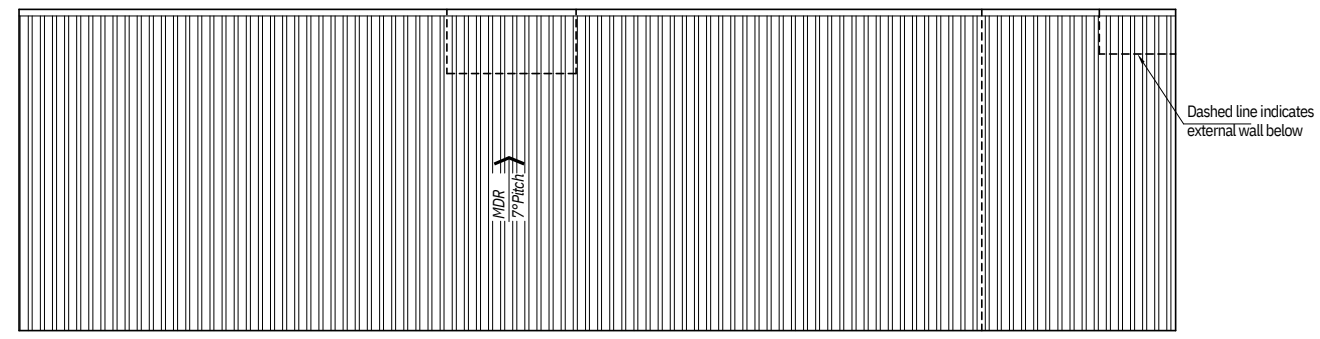
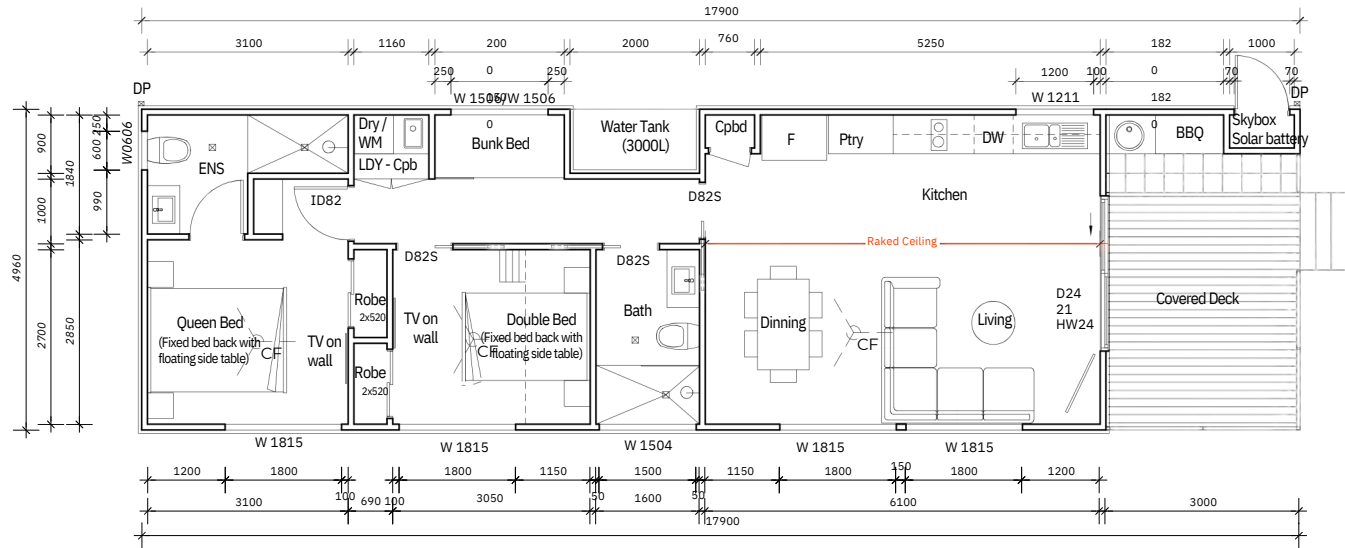
Client

Address

Designed:

Anh Nguyen
Design Manager
Ph: +61 (0) 406 538 497
E:
anh@prefabulous.net.au
28 Bomen Road,
Wagga Wagga, NSW,
2650 Builders Lic No
348960C
Scale 1/NTS@A3 Concept
design

Perspective



Project Name:

05/06/2023

Revisions

B

Client

Address

Designed:

Anh Nguyen
Design Manager
Ph: +61 (0) 406 538 497
E: anh@prefabulous.net.au
28 Bomen Road,
Wagga Wagga, NSW, 2650
Builders Lic No 348960C

Scale 1/100@A3 Concept design

Floor plan Roof Plan

A01

Partner with Prefabulous

Prefabulous is a sustainable product targeting net zero principles. For residential and commercial tourism, defence, health, executive worker accommodation and affordable housing.

SDRC

SUSTAINABLE
BUILDINGS
RESEARCH
CENTRE



UNIVERSITY
OF WOLLONGONG
AUSTRALIA

Net Zero Design & Construction to commence in 2023 from the Phase 1 research commencing Oct 2022 with University of Wollongong and Ingenia Tourism. Phase 2 research opportunities available for 'Nature Positive' research in 2023.

Prefabulous

- High Energy efficiency
- Recyclable natural materials
- Best in class low carbon and green tag materials
- Reducing impact on environment
- Innovative low-cost heating and cooling solutions
- Low maintenance interior and exterior



Dr Matt

Daly
Research Fellow, Sustainable Buildings
Research Centre
Bachelor of Engineering (Environmental), UOW
PhD (Sustainable Futures), UTS

Matt focuses on interdisciplinary research tackling complex and systemic problems in the housing and sustainable built environment space. He works with people who design, build, manage, and occupy residential and commercial buildings. His research focuses on how to improve Australia's building stock so it is more energy efficient, sustainable and better satisfies the needs of the people who use it.

Relevant past projects have including energy efficiency decision-making in new apartment construction lifecycle, post-bushfire resilience of the construction supply chain, and comparative analysis of residential energy efficiency rating tools.



Dr Leela

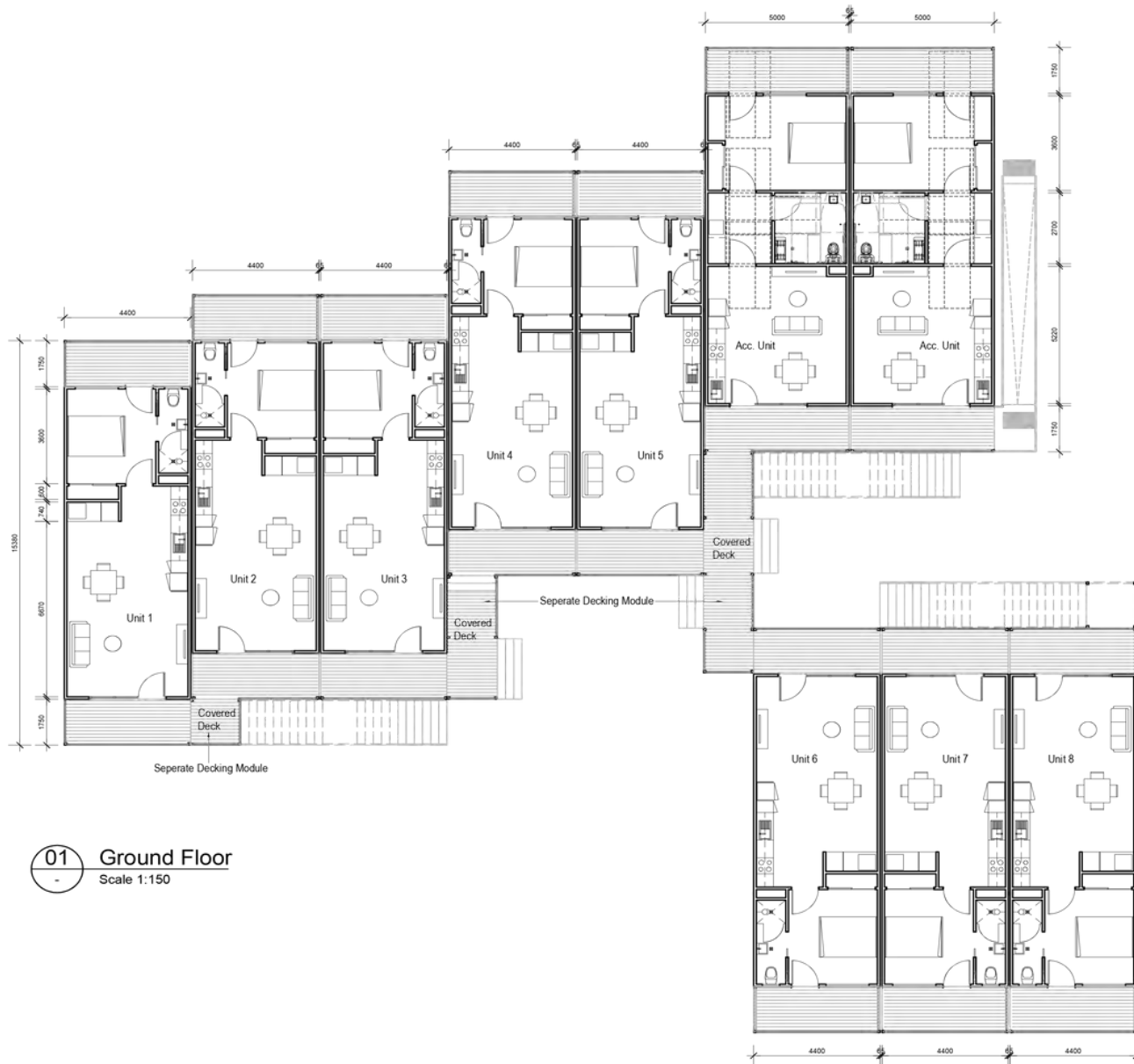
Kempton
Associate Research Fellow, Sustainable
Buildings Research Centre
Bachelor of Engineering (Chemical), USyd
PhD (Materials Engineering), UNSW

Since joining SBRC in 2017, Leela has been involved in a wide range of research projects ranging from field monitoring to technical analysis and numerical modelling. Recent projects include developing an online learning course on reducing construction waste, life cycle analysis of steel frame construction and material stocks and flow analysis for the residential construction industry to identify circular economy opportunities in the construction industry. She has an interest in pursuing projects investigating the management of and reduction of construction waste and improving the sustainability of construction materials.

Project Drawings

fabulously
modern
spaces.





01 Ground Floor
Scale 1:150

the Broken Hill Hospital project

Project Name

07/06/2023

Revisions

No.	Description
1	Revisions

Client

Address

Drawn:

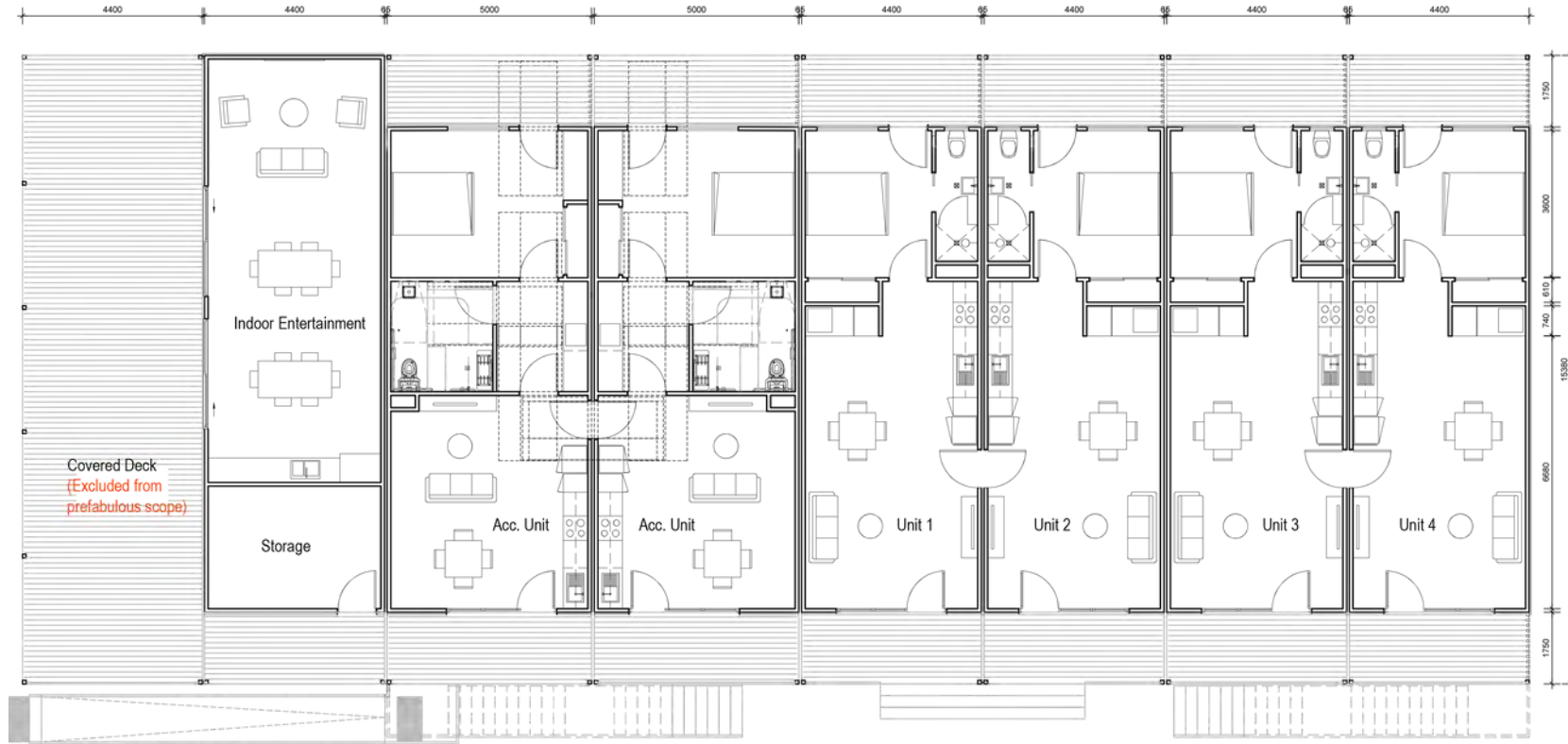
Anh Nguyen

Ph: +61 (0) 406 538 497
E: anh@prefabulous.net.au
28 Bomen Road,
Wagga Wagga, NSW, 2650
Builders Lic No 348960C

Scale: 1:150

Floor Plan

C1



01 Ground Floor
Scale 1:100

Prefabulous

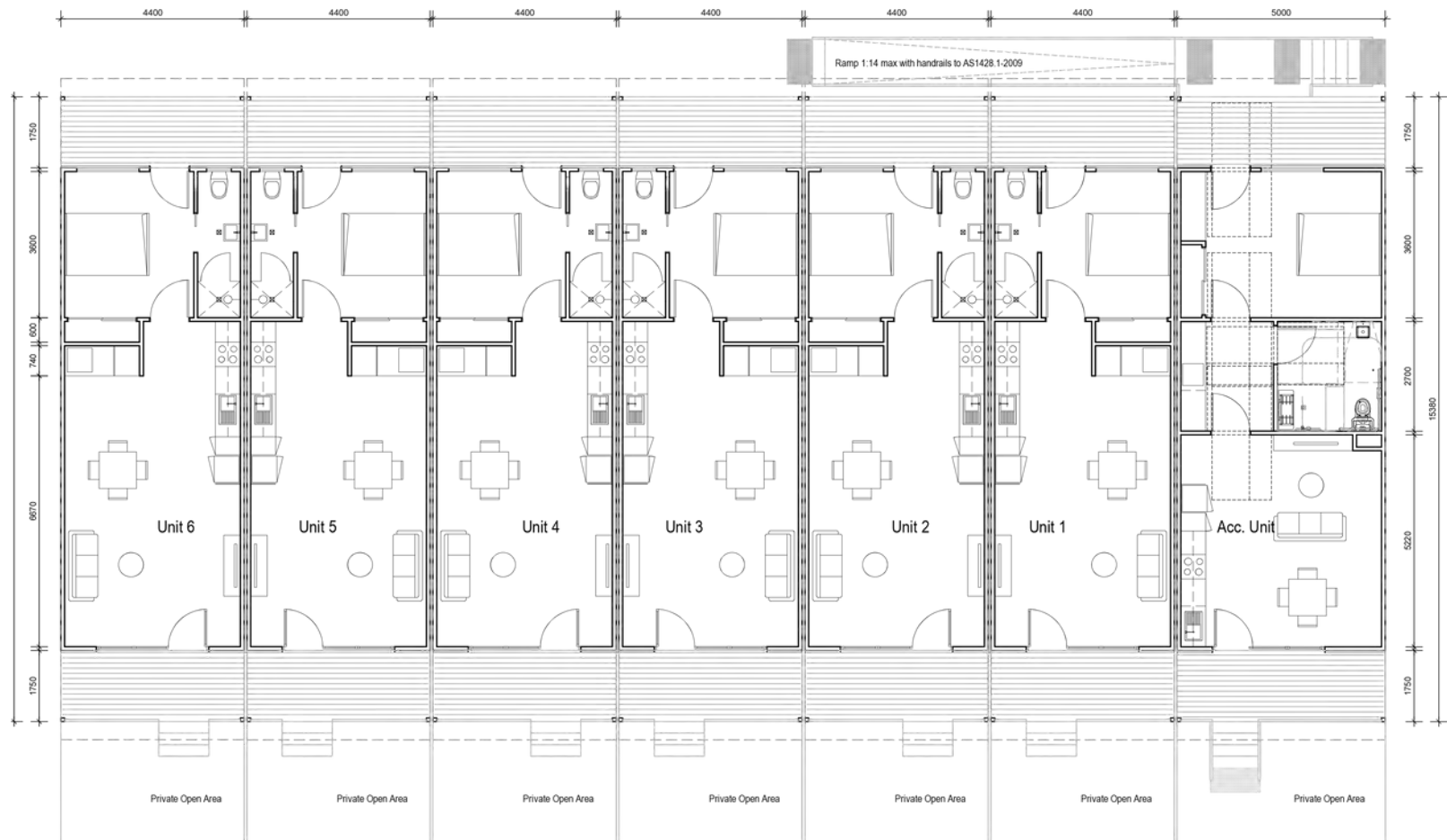
the Cooma Hospital project

07/06/2023

Drawn:
Anh Nguyen
Ph: +61 (0) 406 538 497
E: anh@prefabulous.net.au
28 Bormen Road,
Wagga Wagga, NSW, 2650
Builders Lic No 348960C

Floor Plan

C1



01 Floor plan
Scale 1:100

Prefabulous

the Cowra Hospital project

Project Name:

06/06/2023

Revisions:

No.	Description
1	Revisions

Client:

Address:

Drawn:

Anh Nguyen

Ph: +61 (0) 406 538 497
E: anh@prefabulous.net.au
28 Bomen Road,
Wagga Wagga, NSW, 2650
Builders Lic No 348960C

Date:

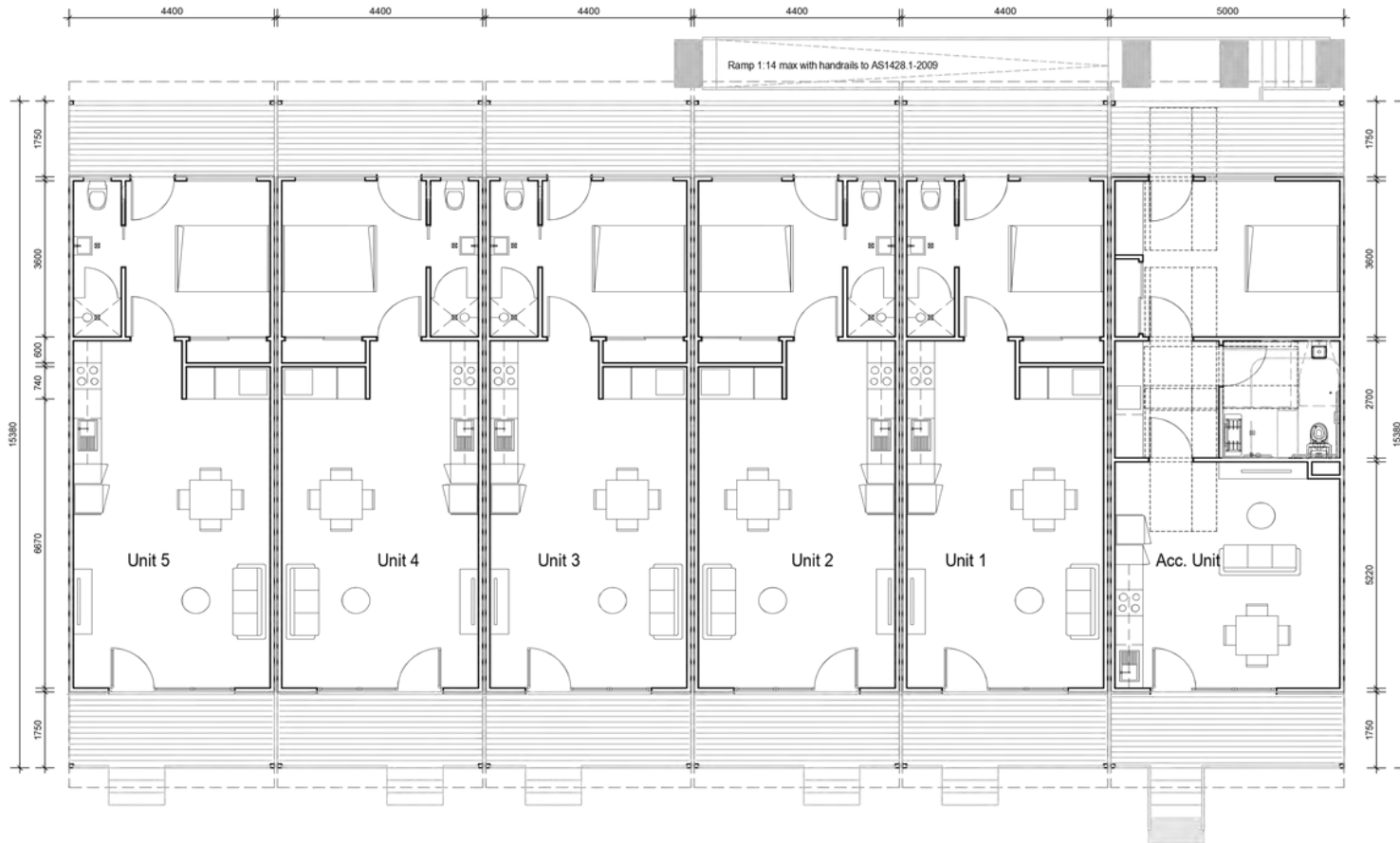
16/5

Floor Plan

C1

Sheet No.:

00023



01 Floor plan
Scale 1:100

Prefabulous

the **Finley Hospital** project

Project Name

06/06/2023

Revision

- 1. Revision
- 2. Revision
- 3. Revision
- 4. Revision
- 5. Revision
- 6. Revision
- 7. Revision
- 8. Revision
- 9. Revision
- 10. Revision

Client

Address

Drawn:

Anh Nguyen

Ph: +61 (0) 406 538 497

E: anh@prefabulous.net.au

28 Bomen Road,

Wagga Wagga, NSW, 2650

Builders Lic No 348960C

Scale: NTS

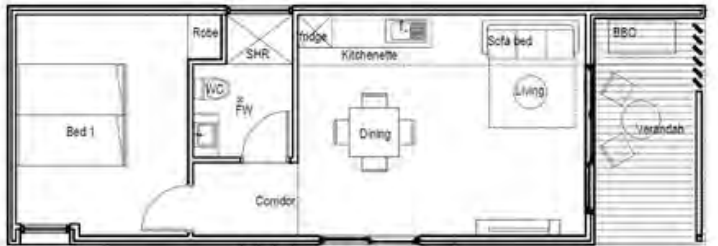
Floor Plan

C1

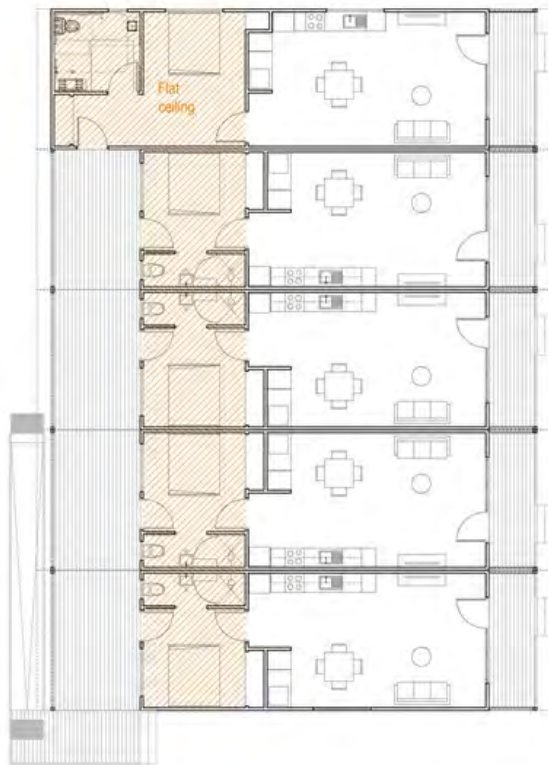
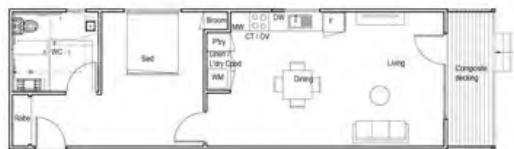
Sheet No. © 2022

Commercial Design Projects

Whitton Malt House



Tumut Hospital



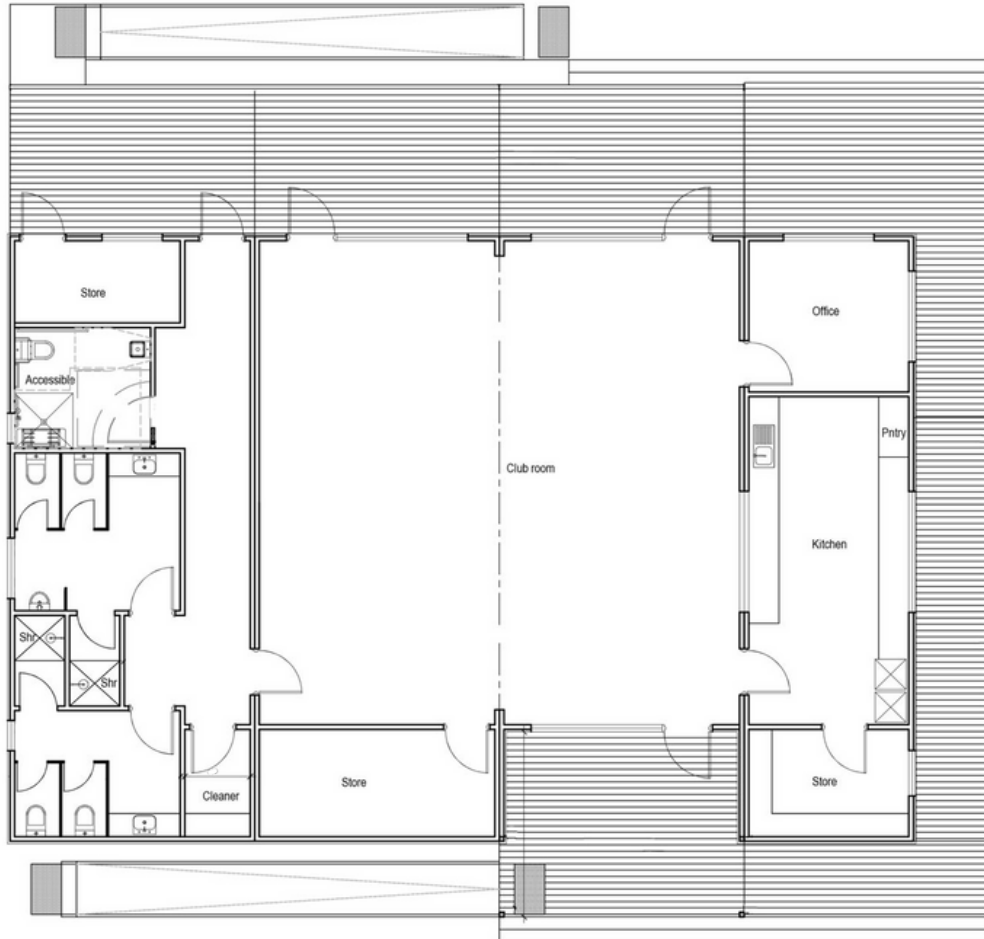
Southern Oil



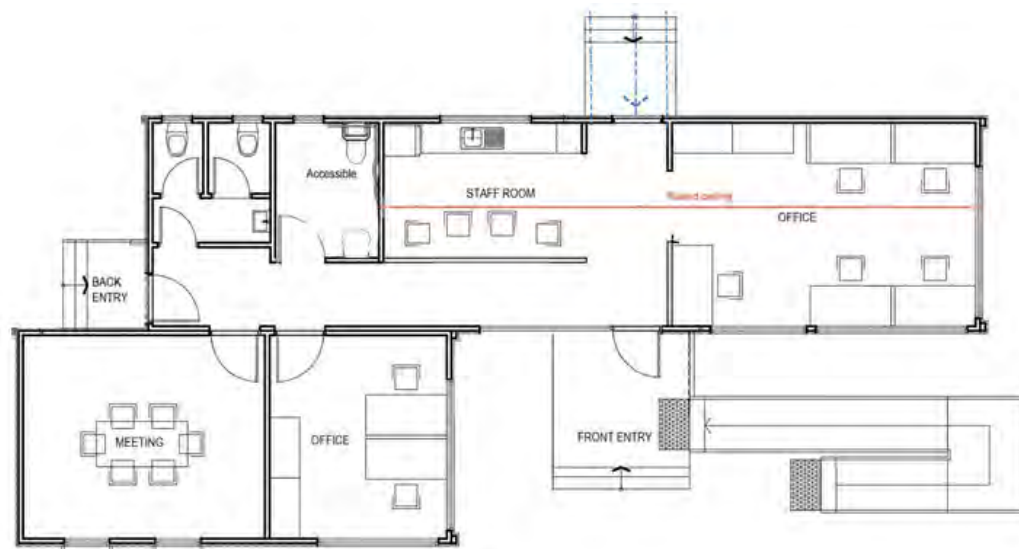
Cupitt's Estate



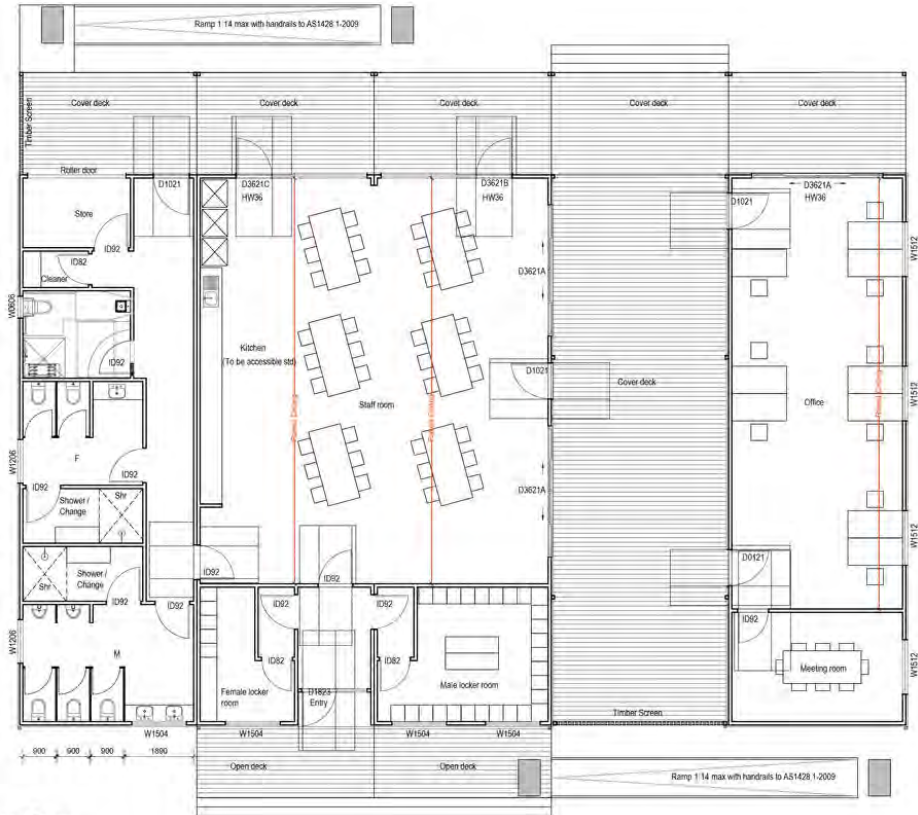
Wagga Tennis Club



Visy Logistics



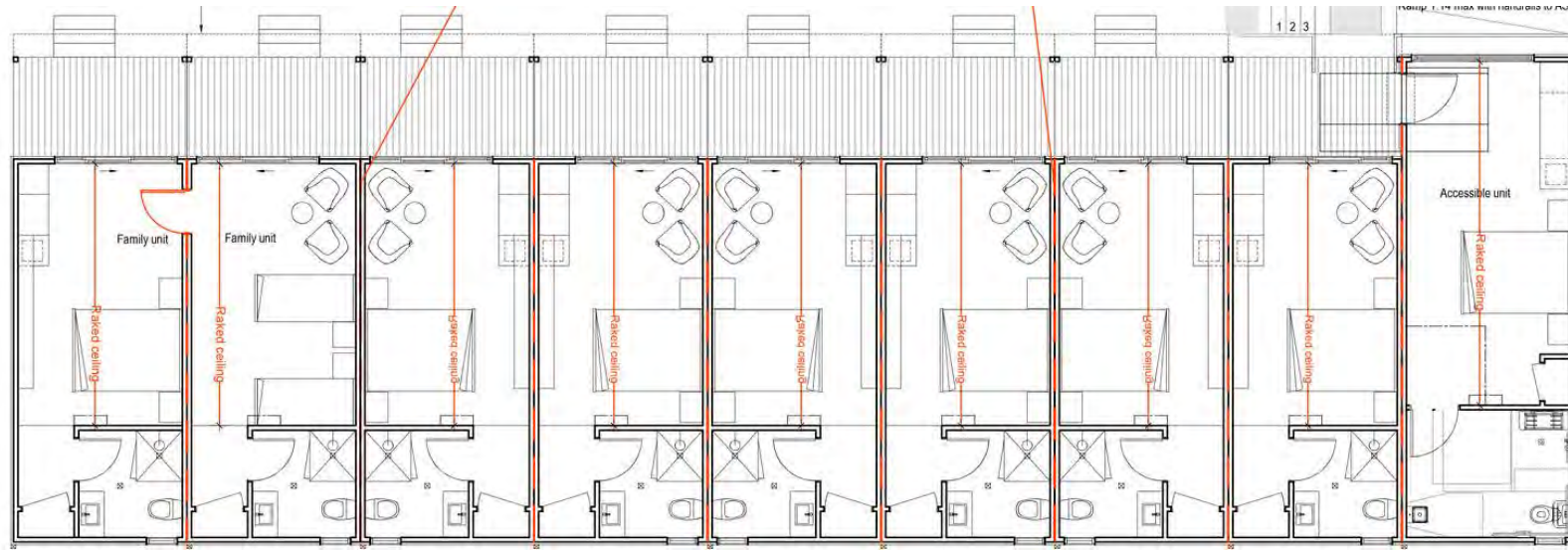
Riverina Oils



er Plan



Condobolin RSL



Prefabulous



Golden Crow Awards 2022

WINNER

Excellence in Innovation



Golden Crow Awards 2021

WINNER

Outstanding Start-Up

COMING UP IN
**GRAND
DESIGNS**
AUSTRALIA

**2021
BUSINESS
AWARDS**

Delivered by
**BUSINESS
NSW**

REGIONAL WINNER



**you're in
good hands**