

elevate

architectural transportables



About Elevate Architectural Transportables

Elevate Architectural Transportables, is an award-winning company that has flipped the notion of flimsy prefab housing on its head and focuses on creating quality housing that incorporates a contemporary, innovative take on relocatable homes.

The Elevate team offer standard building models ranging from a compact 70m² home, to a family friendly, four-bedroom 148m² house - all of which are cleverly designed, spacious homes constructed and finished to a high and exacting standard.

Mind you, with an in-house architectural and interior design team, there is no such thing as 'standard'. An Elevate home incorporates the ideas, visions and house goals of each and every client with the end result, a beautifully bespoke home.





Why Choose Elevate Architectural Transportables?

Architecturally designed and beautifully crafted

Elevate homes are designed by an innovative, long-established architectural team and are renowned for their efficient use of space and light with easy living layouts and stunning contemporary designs. With designers at your fingertips during the entire process, you get to incorporate custom design and bespoke elements that make your home truly and uniquely yours.

Seamless hassle-free design and build experience

Designing and building a house can be stressful but an Elevate home is delivered to your site fully complete and ready to go. After an initial meeting you can simply sit back, relax and let their experienced team bring your new home to life.

Cost effective and fast build times

A house built in a controlled environment can be constructed up to 40% quicker than a conventional home, saving significantly on labour cost alone. The more streamlined construction process also ensures less downtime and reduced waste.

Quality controlled

Continuity of tried and tested materials and tradespeople, consistent building systems and dedicated project management, as well as having an architectural team on site, ensures quality control and consistency at every stage of the process.

Cost certainty with no surprises

With Elevate you know the cost of the build from the outset. The team also provide regular, comprehensive updates during the build process, so you know exactly what's going on and what you're getting.





Some Key Features of an Elevate Home

Award-winning design

Attention to detail and award-winning design are characteristics common across Elevate homes. Each house is designed to maximise light and create a sense of space in every room of the home.

Warm, dry, and healthy

All homes are fully insulated with high quality sustainable insulation. Exterior windows and doors use double glazed, argon filled, UV reflective tinted glass for more efficient insulation. A rigid bracing layer is also built in to the full perimeter of the building to ensure extra stability and a warmer, healthier home.

Bespoke custom-made kitchens

Highly specified kitchens are the heart of an Elevate home. Stone worktops, sleek soft close drawers and doors, quality appliances and tapware are just some of the features that blend form and function in these beautifully custom-made kitchens.

High-end fittings and finishes

Premium European and NZ bathroomware has been selected as standard in Elevate homes, based on the quality, design and function of each item. A selection of premium carpets and stylish, commercial grade laminate planking are used underfoot, and stunning feature and LED lighting are amongst a host of special features that set these homes apart.

Stunning storage solutions

Floor-to-ceiling, extra wide bedroom wardrobes, deep and ample cupboards in kitchens and smart hidden-away storage in bespoke cabinetry units are common and handy features of these homes. So very practical, yet so very stylish!



What our clients have to say...

"The house is just incredible and beautiful, we are just so thrilled with the result. We loved the concept from day one but the result we have has surpassed our dreams and expectations. It really means more than you can imagine - we all truly love it!"

Louise and Leighton Van Dyk
Mystery Creek, Cambridge

"The reason we chose Elevate was due to their enthusiasm and passion to produce a high-end quality and cost effective architectural transportable. We wanted to have certainty on build cost and felt that the transportable would give us a lot more assurance around the price compared to building on site. Nothing was a problem. Quality control is on site with Lee and the team. Building consents, engineers, interior design - it was all done for us - the build was an absolute breeze."

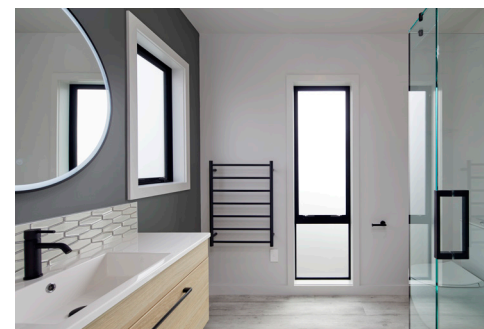
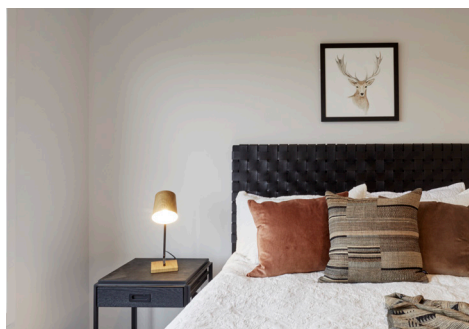
Terry and Fiona Lawrence
Whangapoua, Coromandel Peninsula

"We have had so many people come and knock on our door asking about our house, they can't believe it's a transportable home. On average we have had one person a day walk in over the summer and talk to us about the house and we've shown a few people through it as well. The house has been the talk of Whangamata and we have had such positive feedback, everyone just loves it."

Tim and Tiffany Wood
Whangamata, Coromandel

"The building process and dealing with the Elevate Homes team was wonderful. We have loved the whole process. It was actually a shame when it came to an end. We would certainly recommend them - and we do - as often people (strangers) call in to talk about our new house and we show them around it. We have absolutely no complaints about anything."

Homeowners Box 130
Pinot Grove, Martinborough



elevate
architectural transportables