

ALPHA 1 BUILDERS



Align Design Renovate





PAUL & KATE BATEMAN

WHO ARE WE?

We are a family of 5, based in Mt Albert. Having renovated 2 homes of our own, we understand how overwhelming renovating can be.

We've simplified a complex process by being your one point of contact for the entire renovation.

Working as a team with you and your chosen architect/designer we can Align, Design and Renovate your home to be the very best it can be.

"Improving the way you live in your home is what we love to do"

PAUL BATEMAN

WHY SHOULD YOU TRUST US TO RENOVATE YOUR HOME?

At Alpha 1, we have been successfully transforming character homes for 20+years. Our reliable and experienced builders and sub-trades share our passion for celebrating character homes and their uniqueness.

Alpha 1's outstanding work has picked up several customer service & Master Builders awards. We are incredibly proud of these awards and the homes we renovate.

Paul, owner and project manager of Alpha 1, started the business in his mid-20's and has been going strong ever since. Achieving the highest LBP license for residential building works, you know you are in safe and knowledgeable hands.



START

CHAT WITH US ABOUT YOUR RENOVATION PLANS: We'll tee up an onsite meeting where we'll discuss your project feasibility and send out one of our info packs to get your journey started.



YOUR ONSITE DESIGN MEETING: Here the design process is explained, and your renovation plans discussed. *Already have plans? Go to plan pricing.*



PLAN DEVELOPMENT STARTS: Concept plans get underway. These plans are revised to ensure 100% happiness, then price checked to budget match.*



COUNCIL READY PLANS ARE PRICED: Before your building work starts, we thoroughly & fairly price your plans with a quantity surveyor.*



COUNCIL PLANS ARE APPROVED: These are the plans used to create your dream home. Of course, we're here at any stage to answer your questions.



YOUR DREAM HOME RENOVATION IS OUTLINED: With pricing confirmed you'll receive your Master Builders Contract, outlining your project. We'll offer you a Master Builders 10 Year Guarantee too.



YOUR PROJECT IS LOCKED IN & STARTS: A deposit is paid to lock in your renovation, starting on the agreed date. You'll have weekly on-site meetings, budgets & schedules to keep you completely informed & your project on track.



YOUR DREAM HOME IS COMPLETED & DELIVERED: Once completed we'll walk you through your beautiful home to ensure you're 100% in love with the results. Council Compliance & all paperwork will follow.

RENOVATION SUCCESS IN 8 CLEAR STEPS

RENOVATE

ALIGN

DESIGN

* A small admin fee is charged for these services.



LLOYD HARTLEY

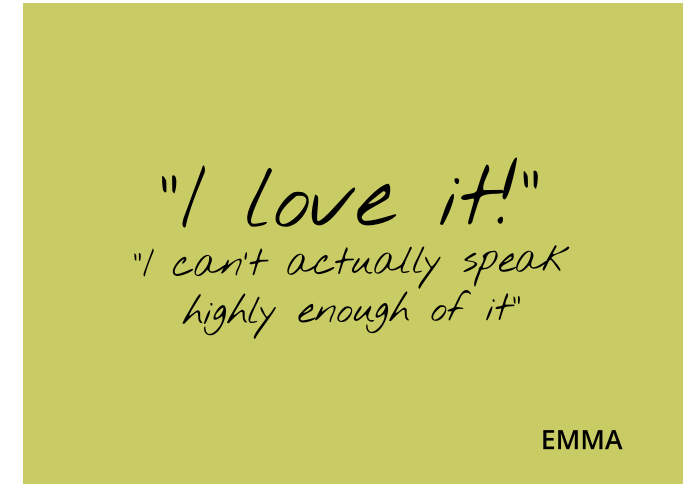


MAUD



ArchiPro.



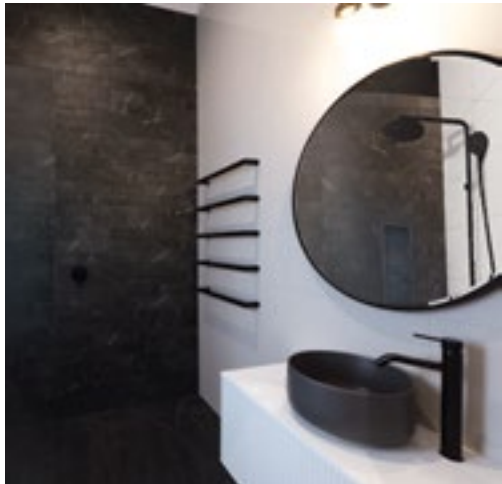


Toby and Emma's CUTE VILLA BECOMES A DREAM FAMILY HOME.

This lovely couple fell for the original features of their home. Sash windows, tongue & groove floors, and battened ceilings to name a few. But in the scheme of a forever home, it was dark, draughty, and pokey with no flow into the sunny garden.

This villa underwent a full renovation. With an extension to the side and re-jig of the layout, their villa is now a dream family home. Warm, dry, bright, and geared for living.





"I would absolutely recommend Alpha 1. To anyone who doesn't know where to start, or how to find the right builder. Definitely give them a call, have a chat with Paul and start your journey. You won't regret it, we have absolutely no regrets and on a project of this size that's amazing!"

TOBY



Kim's FAMILY HOME GETS CONNECTED.

The original Mt Eden home was dark, damp and too cramped. We added a second storey and re-configured the ground floor. The home's become the perfect base for Kim's growing modern family. There's now direct access to the new deck and entertaining area. Giving

the family the perfect spot for summer gatherings. And with plenty more rooms for visitors to stay, Kim loves her practical and spacious home.



"Nothing was a problem to Paul and his team, they were reliable, friendly and obliging."

KIM





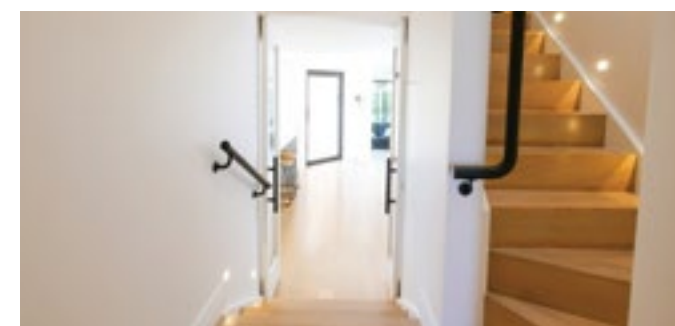
"We're just so thrilled with how it's all come together. I can see us living here for a long time, we're so proud of it."

DAVE & KATH

Dave & Kath's COTTAGE GROWS TO ACCOMMODATE FAMILY LIFE.

Their traditional Westmere cottage is in an ideal spot. School zones, proximity to work, and in a desired central location. The couple were determined to create an ideal family home. What it lacked was flow, size, and access to the lovely garden. We added a 2-storey

extension and reconfigured the layout. It's now an ideal family home for their latest addition.



Brent & Mary-Anne's TIMELESS VILLA MEETS MODERN ARCHITECTURE.

With 2 teenagers and two dogs in tow, this family were beyond ready to grow their home. The 2-storey modern extension offers the family a combination of clever spaces. Allowing the family to come together socially and have much needed personal space. A great home office solution is here too for evolving work conditions brought on by COVID - 19. The extension

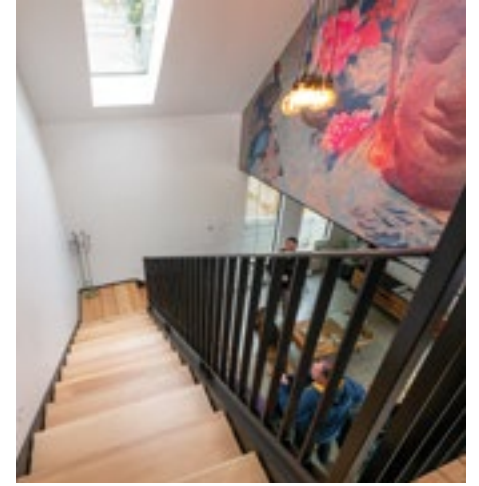
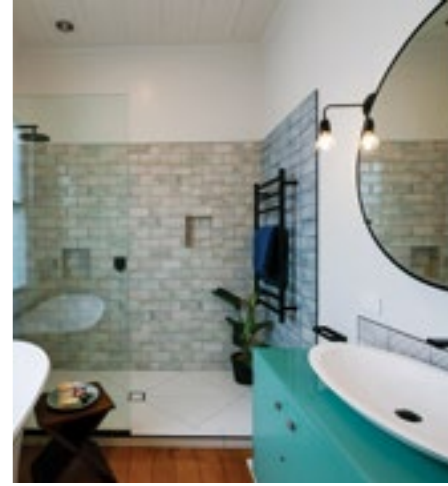
highlights incredible design features that the family are in love with. It also creates that essential direct access to the outdoor entertaining patio. The home is stunning, and the family couldn't be happier with the results.



"I think it's everything we wanted, all of the new part of the house is incredible"

BRENT & MARY-ANNE





"It's just so much easier living in the house in this new space, It's hard to remember what it was like before"

BRENT & MARY-ANNE

Bruce & Emma's VILLA GETS A MODERN UPDATE.

Their historical Remuera home was outdated, stuffy and badly laid out. The home is now timeless and works beautifully for the family with two teens.



"The main thing was having trust worthy people, I totally trusted Alpha 1 and they were great people"

EMMA

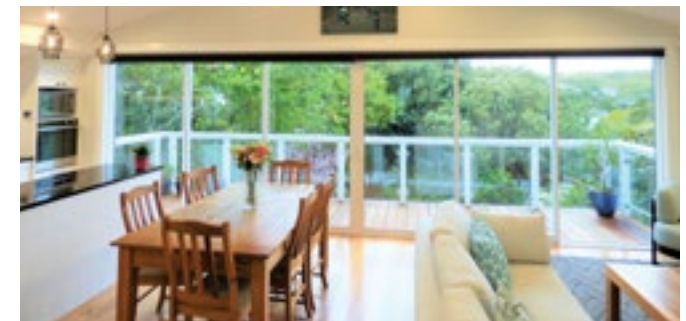




Jo's TRADITIONAL BUNGALOW RECEIVES A CONTEMPORARY EXTENSION.

Jo loved the location of her Grey Lynn bungalow but longed for a connection to the garden. She wanted more light, open spaces, and flow. With a contemporary 2-storey extension, the home is now Jo's light-filled dream home. The extension has created a

real connection to the garden. This gives Jo that all-important indoor-outdoor flow and she's wrapped with the results.



ALPHA 1 BUILDERS



Align Design Renovate

DROP US A LINE OR GIVE US A CALL, WE'D LOVE TO HEAR ABOUT YOUR RENOVATION.

0800 ALPHA1 • office@alpha1builders.co.nz • www.alpha1builders.co.nz