

ANGELUCCI ARCHITECTS

PERMANENT MODULAR BUILDINGS



Our passion is creating spaces for people to work and live to make a tangible difference to their lives.

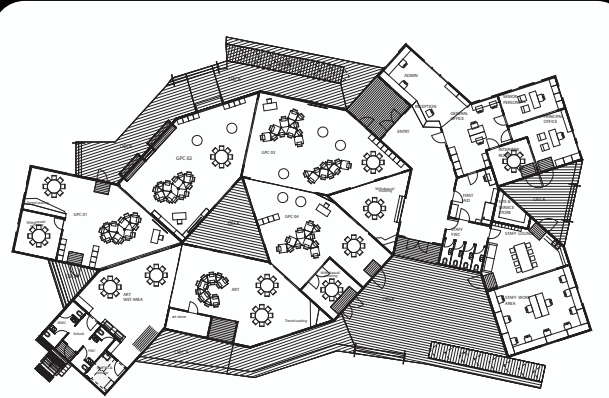
Challenging projects and innovation are our speciality. We love small sites, heritage constraints, energy efficient design and modular buildings.

Our approach is to understand your aspirations and then work with you to uncover the unique opportunities inherent in your project.

CONTACTS

494 Rathdowne St, Carlton North, Victoria, 3054
www.angelucciarchitects.com
info@angelucciarchitects.com
 +61 413 067 966
 +61 3 9380 6880

ARCHIMODS™



Angelucci Architects have developed a new portable modular system under their parent company ArchiKiosk Pty Ltd. Archimods™ designed by Enza Angelucci has been under development since 2011, when it was awarded a professional commendation. With leading portable manufacturers in Victoria, Archimods™ have been developed in direct response to an educational brief response that includes integrated internal and external teaching spaces that can contract and expand both vertically and horizontally according to the specific educational requirements.



GLENGALA PRIMARY SCHOOL



PROJECT Modular Design Template
 LOCATION Sunshine West, Victoria
 YEAR 2018

The delivery of Stage 1 at Glengala Sunshine West Primary School is part of the VSBA Permanent Modular Building Program 2017 - 2018. The design entitled Archimods™ - Prototype 01 has been developed as a design template for the role out of innovative design templates that are adaptive and flexible in design for the future teaching and learning models encompassing C21st century learners. The specific project brief for Glengala Sunshine West Primary School included four general purpose learning areas and a multipurpose room connected by external learning spaces.



BAYLES REGIONAL PRIMARY SCHOOL



PROJECT Multi Purpose Room
 LOCATION Bayles, Victoria
 YEAR 2018

The brief of Bayles Regional Primary School included the need for flexible space that can adapt both as music and arts room and a large open space for the school and community to gather. The design approach was to utilise the existing western courtyard as a community gathering space that integrates the administrative entry and waiting area via a covered walkway ramp into the multi-purpose room and reception. The west facing facade is lined with a timber screen that acts as a shading device to the west and a billboard highlighting the school entrance.

ELWOOD PRIMARY SCHOOL



PROJECT 7 General Purpose Classroom
 LOCATION Elwood, Victoria
 YEAR 2018

Elwood Primary School which has taken inspiration from the existing 1914 red brick school buildings. The brief integrates the northern community garden into the junior school. The design allows both northern and southern external areas to intergate into internal learning spaces. Classrooms are clustered around a central multipurpose area which acts a visual and spatial connector to northern and southern play areas. The staggering of modules allows each classroom a northern aspect.

FRANKSTON HEIGHTS



PROJECT GPCs, Library & admin
 LOCATION Frankston, Victoria
 YEAR 2018

Our design proposal draws inspiration from the opportunities the site configuration has to offer by maximising passive sustainable Design principals such as maximum solar gain through North orientation, the reduction of solar glare through the creation of external walkways surrounding the building envelop and the use of timber vertical screens to control solar gain. Through a series of connected 13 x 5m x 15m and 1 x 5m x 10m prefabricated modules we have oriented and connected these modules to create larger programmatically adaptable and flexible spaces that intern are connected to the existing landscape.

