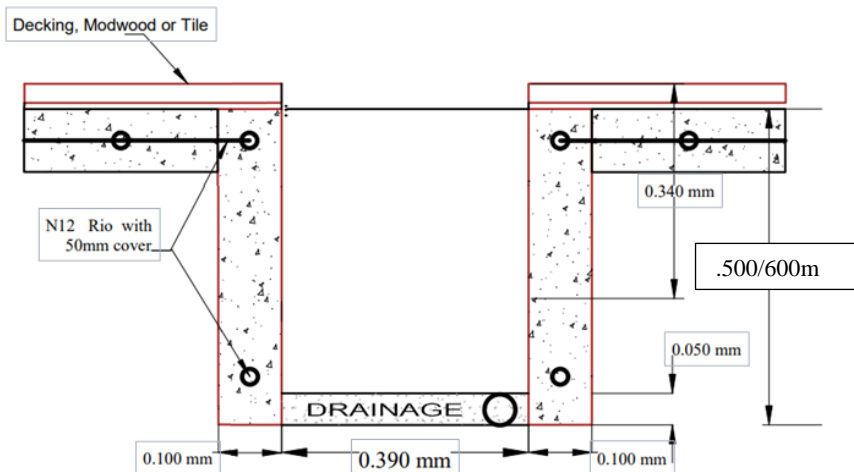
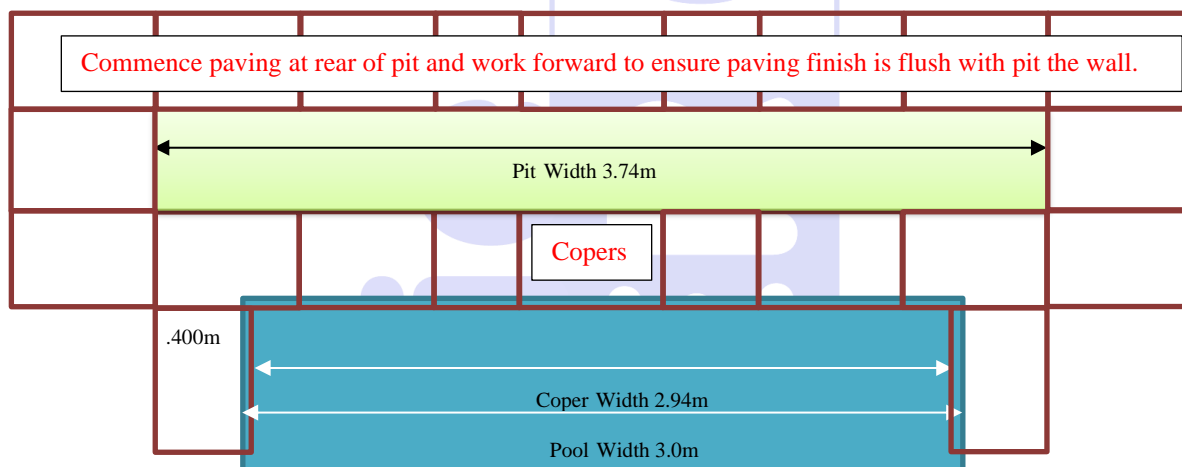
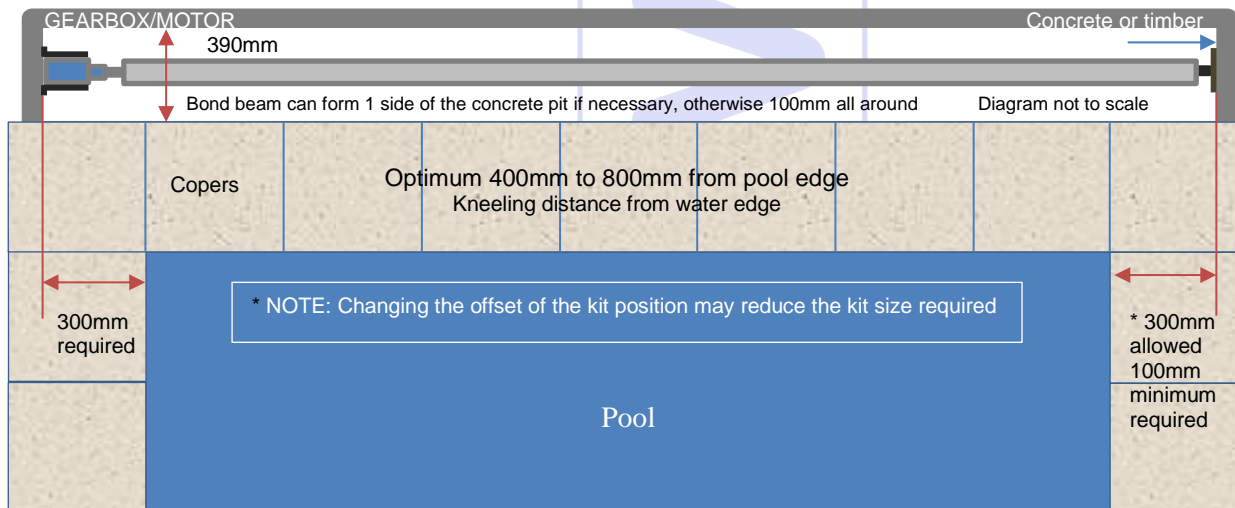


Aussie UnderCover® Instructions (extract) - CONCRETE

The standard area required to install the kit in-ground, under deck or in a concrete or other type of pit allows 300mm past the water line edge on each side of the pool. This can be reduced to 100mm on the non-winder side if space is an issue.

Formed concrete

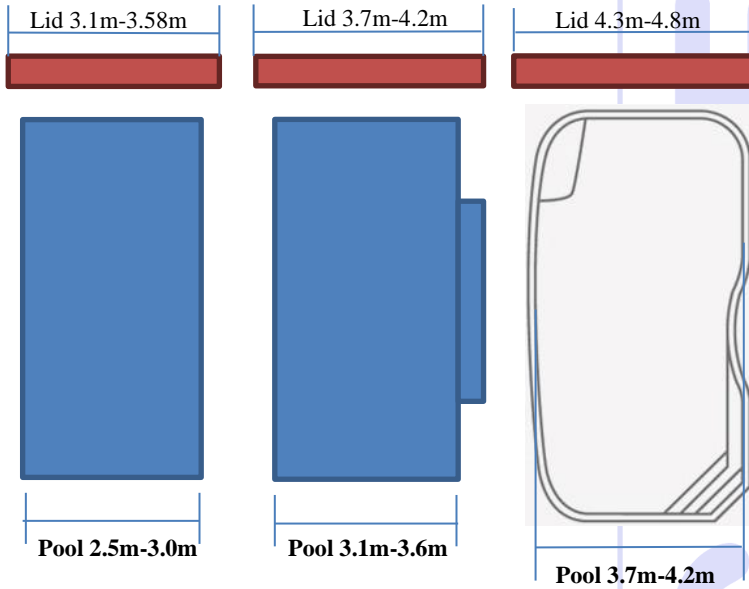
- Create a cavity, referring to the chart below x .390m wide x minimum of .500m deep.
- N12 rio with 40mm coverage required.
- Allow extra depth for suitable drainage. Water must not collect in the completed pit.
- It is the contractor's responsibility to identify and provide adequate drainage.



Copyright – instructions not to be copied or duplicated in any format – property of Aussie UnderCover®

Pit/Deck/Concrete Opening Size – Petite to Large+

Note: If the pit/lid frame is to match coper width you may need to increase the kit size

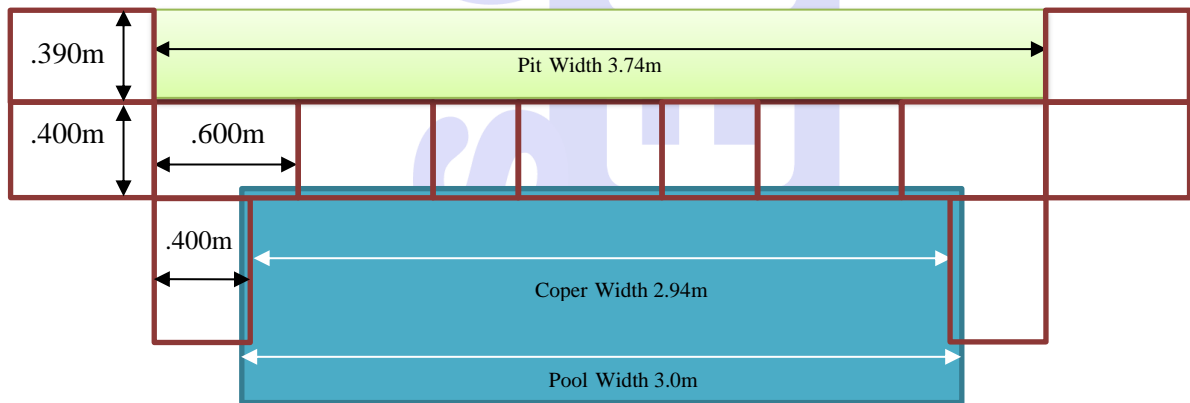


Kit Name	Pool Min	Pool Max	Lid Min	Lid Max
Petite	1.50	1.70	2.30	2.50*
Narrow	1.85	2.30	2.73	3.05*
Small	2.40	2.90	3.10	3.58*
Medium	3.00	3.60	3.70	4.20*
Large	3.70	4.10	4.40	4.80
LargePlus	4.20	4.20	4.40	4.90
Super	4.30	4.80	4.95	5.50*
SuperPlus	4.90	5.40	5.46	6.10*
SuperMax	5.50	6.00	6.20	7.16*+
Custom	6.10	6.60	6.20	7.16*
CustomPlus	6.70	7.20	7.40	8.40 ^

Copyright – instructions not to be copied or duplicated in any format – property of Aussie UnderCover®

* Extended joiners will the increase lid frame by up to 120mm
 + 6.4m tube (maximum pit 6.65m)
 ^ 7m tube with extension (maximum pit 7.850m)
 The roller tube is expandable to the appropriate size

NOTE: the completed lid frame must be 20mm shorter than the internal measurement of the completed box frame or deck/concrete pit opening. This allows for a 10mm gap at each end.
 The lid frame covering material (e.g. decking or tiles) will overhang by 5mm and leave a 5m space.



Example
 Pool width (3.0m)
 - Coper overhang (0.08m)
 + coper width (0.80m)
 = **3.72m - MEDIUM KIT**

Deck/Pit Opening Size Chart – Super, SuperPlus/Max & Custom

Note: If the pit/lid frame is to match coper width you may need to increase the kit size

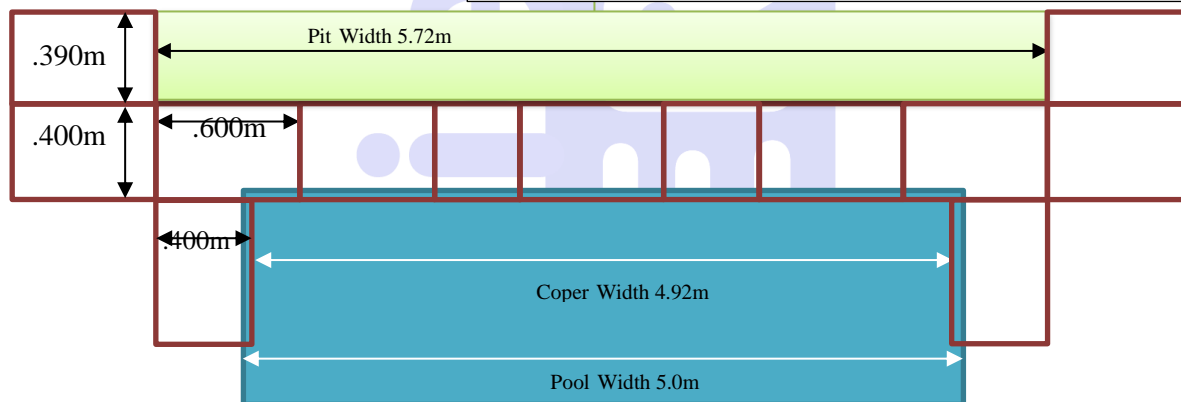


Kit Name	Pool Min	Pool Max	Lid Min	Lid Max
Petite	1.50	1.70	2.30	2.50*
Narrow	1.85	2.30	2.73	3.05*
Small	2.40	2.90	3.10	3.58*
Medium	3.00	3.60	3.70	4.20*
Large	3.70	4.10	4.40	4.80
LargePlus	4.20	4.20	4.40	4.90
Super	4.30	4.80	4.95	5.50*
SuperPlus	4.90	5.40	5.46	6.10*
SuperMax	5.50	6.00	6.20	7.16*+
Custom	6.10	6.60	6.20	7.16*
CustomPlus	6.70	7.20	7.40	8.40 ^

Super, SuperPlus & SuperMax
 The roller tube is expandable to the appropriate size

Custom & Custom Plus
 The roller tube is 125mm diameter and will need to be cut to suit required length

* Extended joiners will the increase lid frame by up to 120mm
 + 6.4m tube (maximum pit 6.65m)
 ^ 7m tube with extension (maximum pit 7.850m)



Example
 Pool width (5.0m)
 - Coper overhang (0.08m)
 + coper width (0.80m)
 = **5.72m - SUPER KIT**

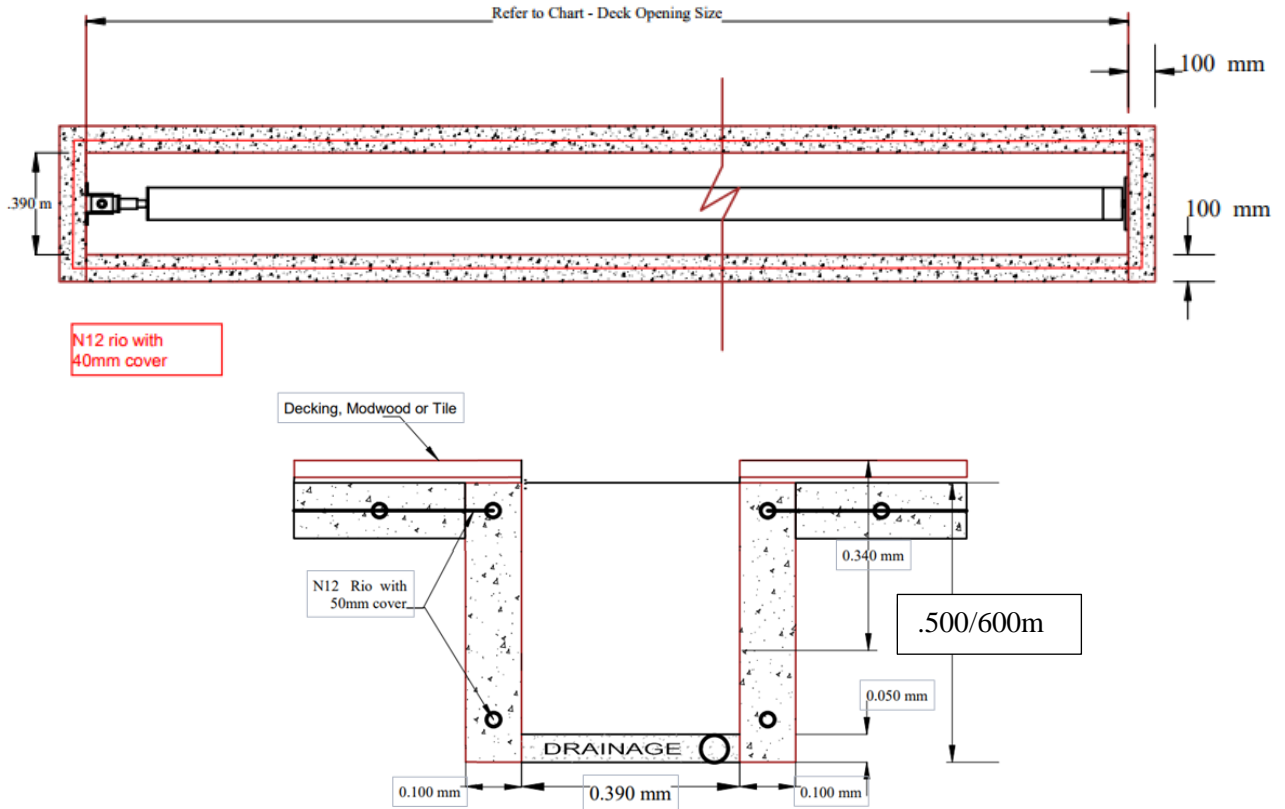
NOTE: the completed lid frames should be 40mm shorter than the internal measurement of the completed box frame or deck/concrete pit opening. This allows for a 10mm gap at each end and 20mm in the centre. The lid frame covering material (e.g. decking or tiles) will overhang by 8-9mm in the center and 5mm at either end and leave a 5m space.

The lid frames can be any size within the range of Lid Minimum and Lid Maximum

Copyright – instructions not to be copied or duplicated in any format – property of Aussie UnderCover®

Concrete Pit Preparation

- Minimum 90/100mm concrete and N12 rio with 40mm coverage required. Reinforce corner edges.
- ***Allow extra depth for suitable drainage. Water must not collect in the completed pit.***
- ***It is the contractor's responsibility to identify and provide adequate drainage.***



Sample construction

- 90 x 45 treated pine (4 pieces @ length of pit minus 40mm plus 10-12 @ 260mm)
- 20mm form ply (2 pieces @ length of pit minus 40mm x 500mm plus 2 @ 390mm x 500mm)



Overall completed formwork =
 Pit length by 390mm wide x
 450/500mm high/deep



Outside to outside 350mm wide
 90 x 45 treated pine. 20mm form ply will
 be added to each outside edge.



**Screws must be accessible
 once the concrete has been
 poured so the form work
 can be removed**

Copyright – instructions not to be copied or duplicated in any format – property of Aussie UnderCover®



Top and bottom complete



Screw 20mm Form Ply to the four outside edges. Top and bottom left open.



Outside to outside
450/500mm deep

Do not screw from the outside



Screws must be accessible once the concrete has been poured so the form work can be removed



Completed form work 390mm wide x 500mm deep. Length to suit pool & kit

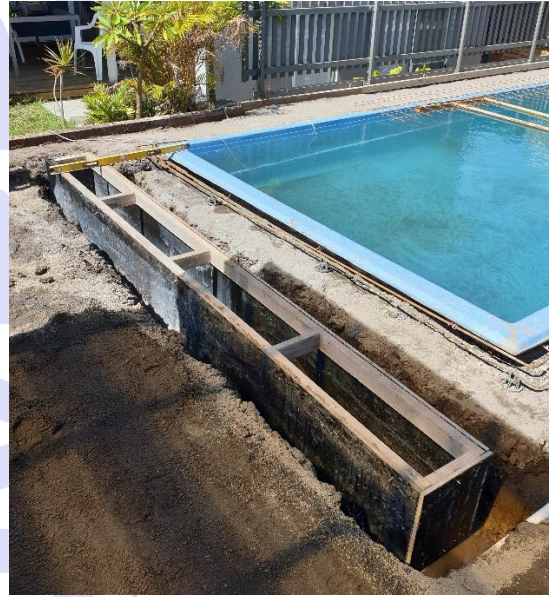


Excavation ready for the formwork. Ensure there is appropriate drainage provided or incorporate a sump pump

Copyright – instructions not to be copied or duplicated in any format – property of Aussie UnderCover®



N12 rio in all walls & corners top and bottom
 Timber brace attached to formwork and pool edge to stop movement during concrete pour



Level with pool or your specified datam point



Conduit for power if required



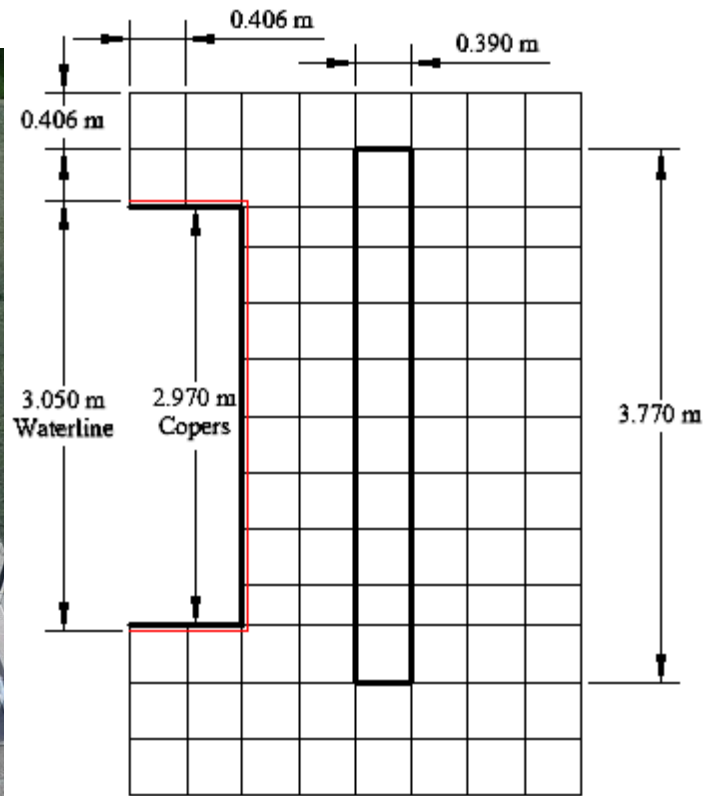
Paving finished flush with pit walls



Agi line and Gravel drainage in base

Paving must be level with the cover height. Do not commence any paving fall until after the Aussie Undercover as the lid frame must be installed on a level surface.

Copyright – instructions not to be copied or duplicated in any format – property of Aussie UnderCover®



Layout Example

Pool 3.050m internal width
 Coper Travertine 406 x 406 x 12
 Coper overhang 30mm – internal coper width 2.970m
 Pit 3.770m wide



Copyright – instructions not to be copied or duplicated in any format – property of Aussie UnderCover®

