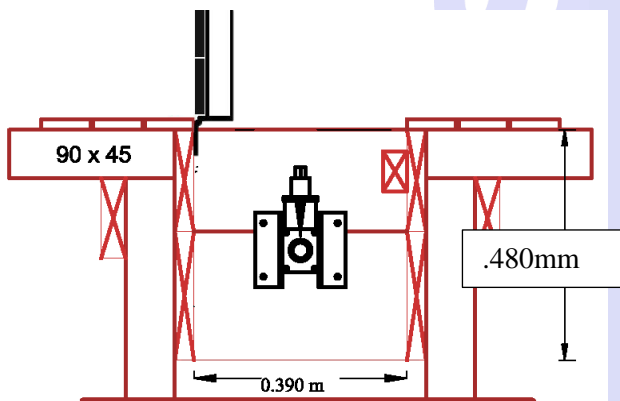
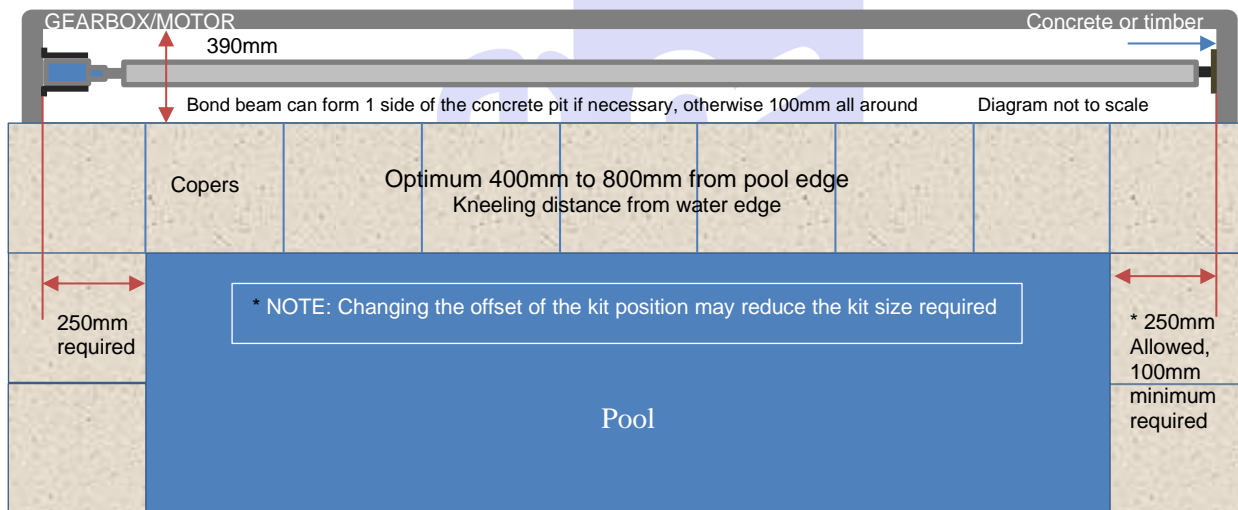
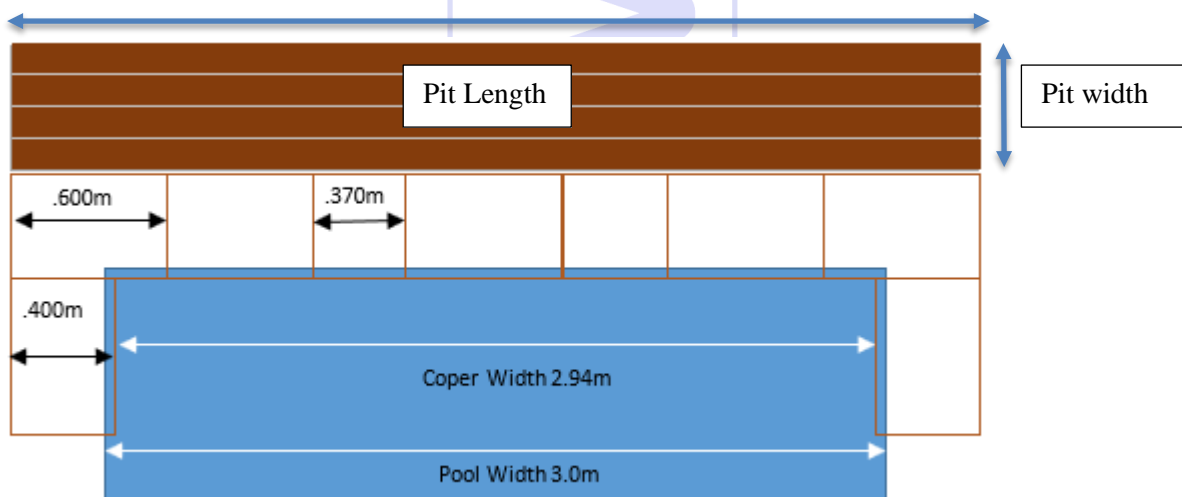


## Aussie UnderCover® Instructions (extract)

The standard area required to install the kit in-ground, under deck or in a concrete or other type of pit allows 250mm past the water line edge on each side of the pool. This can be reduced to 100mm on the non-winder side if space is an issue.

### Under deck

- Cut or create an opening in the deck to suit the Aussie UnderCover® lid frame. (Diagram 1 & Chart below x .390m x .480m deep)
- Frame the opening to provide anchor points to mount the Gearbox, End Mount and gas strut brackets. (refer to diagrams & gas strut setup)
- **It is the home owner or contractor's responsibility to identify and provide adequate drainage.**

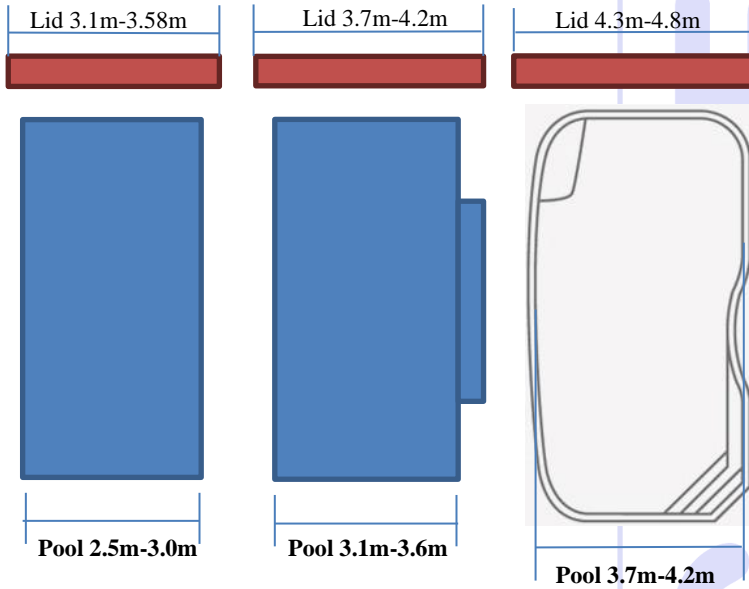


**NOTE: The deck opening width will be determined by the spacing of 2-6 boards depending on the dimensions of the boards and spacing e.g.**

- 200 x 32 (2 boards)
- 137 x 23 (3 boards)
- 90 x 19 (4 boards)
- 65 x 19 (6 boards)

## Pit/Deck/Concrete Opening Size – Petite to Large+

**Note: If the pit/lid frame is to match coper width you may need to increase the kit size**

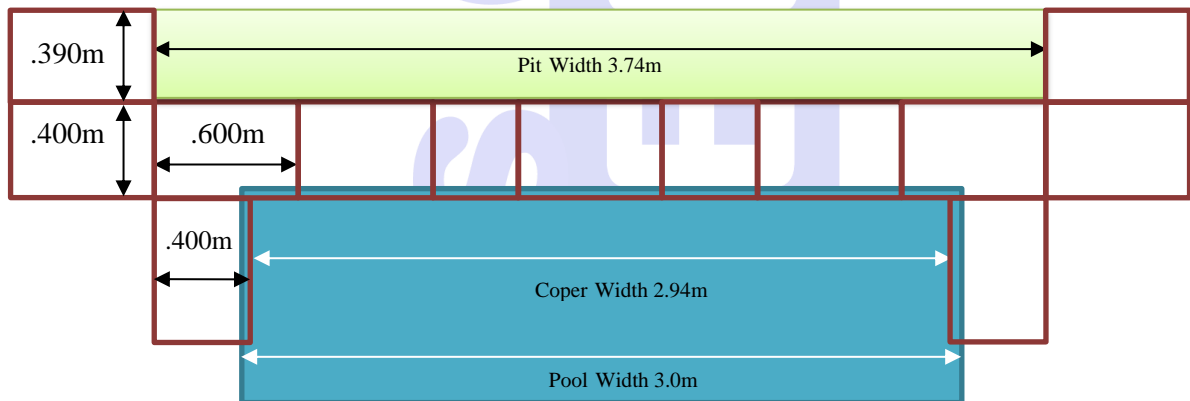


Kit Name	Pool Min	Pool Max	Lid Min	Lid Max
Petite	1.50	1.70	2.30	2.50*
Narrow	1.85	2.30	2.73	3.05*
Small	2.40	2.90	3.10	3.58*
Medium	3.00	3.60	3.70	4.20*
Large	3.70	4.10	4.40	4.80
LargePlus	4.20	4.20	4.40	4.90
Super	4.30	4.80	4.95	5.50*
SuperPlus	4.90	5.40	5.46	6.10*
SuperMax	5.50	6.00	6.20	7.16*+
Custom	6.10	6.60	6.20	7.16*
CustomPlus	6.70	7.20	7.40	8.40 ^

Copyright – instructions not to be copied or duplicated in any format – property of Aussie UnderCover®

\* Extended joiners will increase lid frame by up to 120mm  
 + 6.4m tube (maximum pit 6.65m)  
 ^ 7m tube with extension (maximum pit 7.850m)  
 The roller tube is expandable to the appropriate size

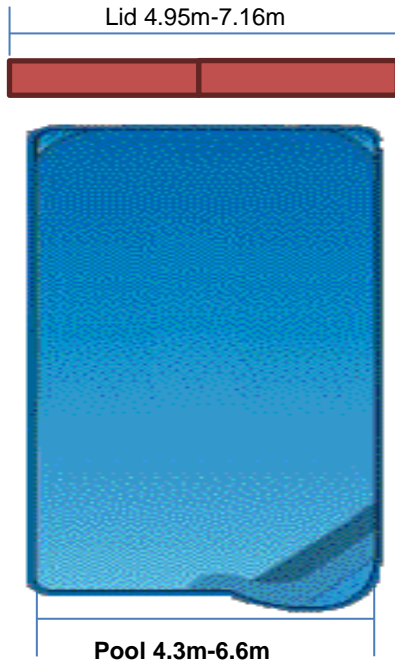
**NOTE:** the completed lid frame must be 20mm shorter than the internal measurement of the completed box frame or deck/concrete pit opening. This allows for a 10mm gap at each end.  
 The lid frame covering material (e.g. decking or tiles) will overhang by 5mm and leave a 5m space.



**Example**  
 Pool width (3.0m)  
 - Coper overhang (0.08m)  
 + coper width (0.80m)  
 = **3.72m - MEDIUM KIT**

## Deck/Pit Opening Size Chart – Super, SuperPlus/Max & Custom

**Note: If the pit/lid frame is to match coper width you may need to increase the kit size**

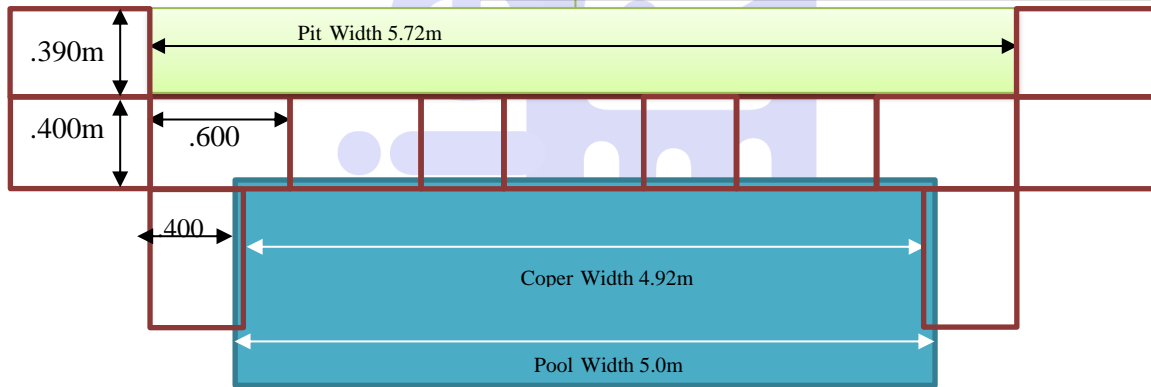


Kit Name	Pool Min	Pool Max	Lid Min	Lid Max
Petite	1.50	1.70	2.30	2.50*
Narrow	1.85	2.30	2.73	3.05*
Small	2.40	2.90	3.10	3.58*
Medium	3.00	3.60	3.70	4.20*
Large	3.70	4.10	4.40	4.80
LargePlus	4.20	4.20	4.40	4.90
Super	4.30	4.80	4.95	5.50*
SuperPlus	4.90	5.40	5.46	6.10*
SuperMax	5.50	6.00	6.20	7.16*+
Custom	6.10	6.60	6.20	7.16*
CustomPlus	6.70	7.20	7.40	8.40 ^

**Super, SuperPlus & SuperMax**  
 The roller tube is expandable to the appropriate size

**Custom & Custom Plus**  
 The roller tube is 125mm diameter and will need to be cut to suit required length

\* Extended joiners will the increase lid frame by up to 120mm  
 + 6.4m tube (maximum pit 6.65m)  
 ^ 7m tube with extension (maximum pit 7.850m)



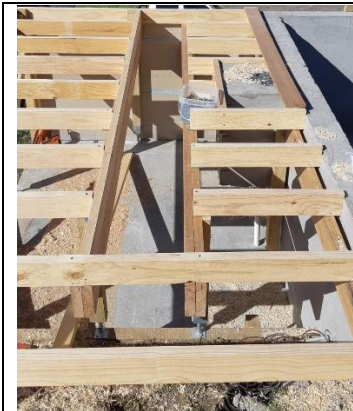
**Example**  
 Pool width (5.0m)  
 - Coper overhang (0.08m)  
 + coper width (0.80m)  
 = **5.72m - SUPER KIT**

**NOTE:** the completed lid frames should be 40mm shorter than the internal measurement of the completed box frame or deck/concrete pit opening. This allows for a 10mm gap at each end and 20mm in the centre. The lid frame covering material (e.g. decking or tiles) will overhang by 8-9mm in the center and 5mm at either end and leave a 5m space.

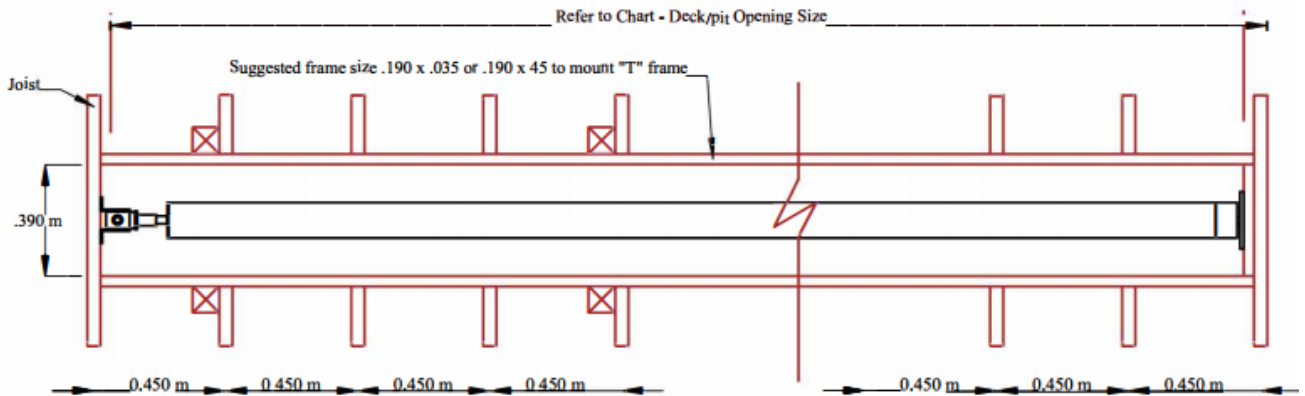
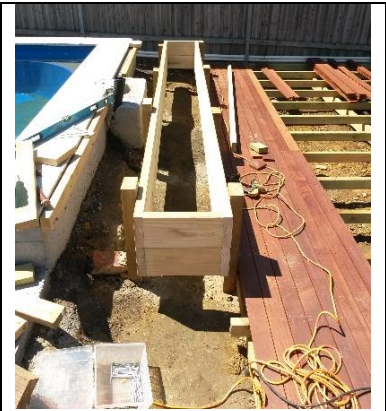
The lid frames can be any size within the range of Lid Minimum and Lid Maximum

Copyright – instructions not to be copied or duplicated in any format – property of Aussie UnderCover®

## Decking Preparation examples



Cavity lining 190 x 35 or 245 x 35 as required

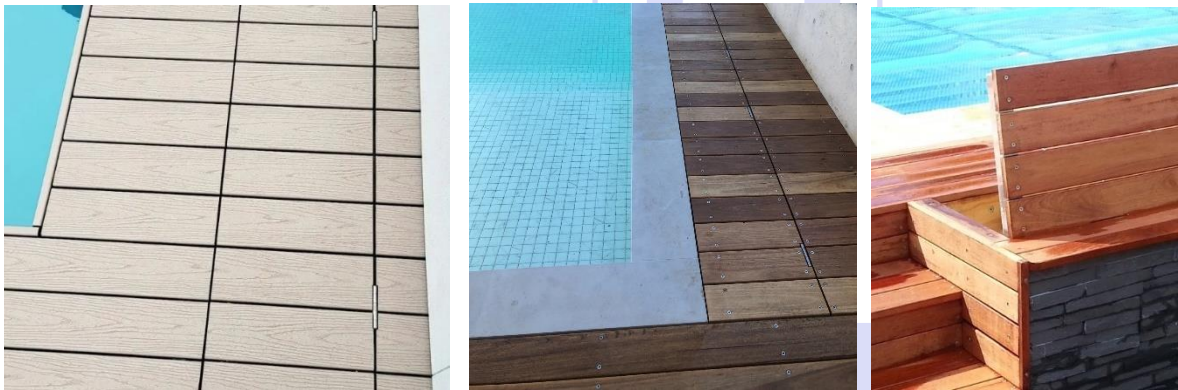


- Opening size determine by board width.
- Cross braces at the base if the deck is suspended more than .5m above ground to stop cover from unrolling.

Copyright – instructions not to be copied or duplicated in any format – property of Aussie UnderCover®

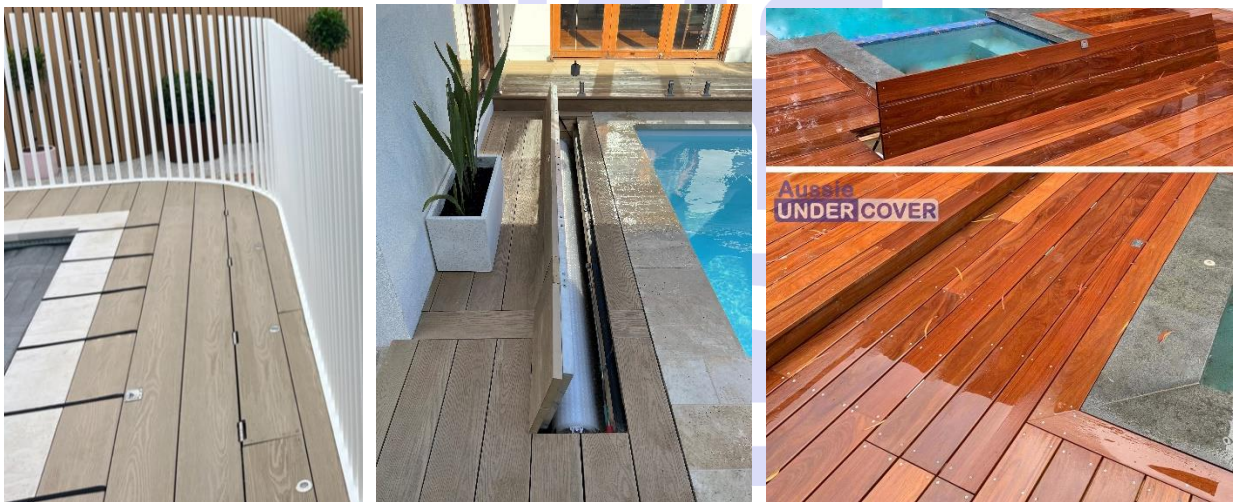


Timber 65 x 19 boards (6 boards)



Standard width pit for board across the lid frame (390mm)

Merbau 90 x 19 (4 boards)



Millboard 176 x 32 (2 boards)

Timber 135 x 22 (3 boards)

Copyright – instructions not to be copied or duplicated in any format – property of Aussie UnderCover®