

INSTALLATION GUIDES AND PHOTOS

Kit Sizes

THESE ARE NOT
INSTALLATION
INSTRUCTIONS

Kit Name	Pool Min	Pool Max	Lid Min	Lid Max
Petite	1.50	1.70	2.30	2.50*
Narrow	1.85	2.30	2.73	3.05*
Small	2.40	2.90	3.10	3.58*
Medium	3.00	3.60	3.70	4.20*
Large	3.70	4.10	4.40	4.80
LargePlus	4.20	4.20	4.40	4.90
Super	4.30	4.80	4.95	5.50*
SuperPlus	4.90	5.40	5.46	6.10*
SuperMax	5.50	6.00	6.20	7.16*+
Custom	6.10	6.60	6.20	7.16*
CustomPlus	6.70	7.20	7.40	8.40^

INSTALLATION
INSTRUCTIONS
WILL BE EMAILED
OR INCLUDED IN
DELIVERY

* Extended joiners will increase lid frame by up to 120mm
+ 6.4m tube (maximum pit 6.65m) - ^ 7m tube with extension (maximum pit 7.750m)

① Concrete Pit Installation Guide & Photos – manual/powered

The Concrete Installation kit is the most popular. It works well where there will be concrete around the pool or concrete under pavers. The kit is then installed directly into the pit. All specifications provided.

② Under Deck Installation Guide & Photos – manual/powered

The under deck kit installs in a new or existing deck. The lid frame is covered with matching hardwood, Modwood, other manufactured timber products or aluminium decking. All specifications provided.

Example



NOTE: Changing the offset of the kit position may reduce or increase the kit size required

① Concrete Pit Installation Guide & Photos – manual/powered

The kits are adjustable within the size range listed above and designed for installation by a contractor or home handyman. Full details provided in the kit installation instructions.

The **Aussie UnderCover®** Kit includes:

- Aluminium lid frame with stainless steel hinges attached, flush mount handle and gas strut
- Roller tube, winder mechanism with extended winding handle and aluminium mounting brackets
- Optional: Pool cover, hall cord and cover attachment kit

Basic Concrete Installation:

- Create your pit with formed concrete or any other suitable construction method
- Complete tiling or paving around the pit
- Assemble the lid frame and install inside your pit.
- Install winder/motor gearbox assembly
- Install tube assembly
- Install handle(s) and strut(s)
- Finish lid frame with tiles, timber, composite timber or tiles to suit your situation
- Hinges are set to accommodate the product of your choice, as advised by you
- Gas struts are provided to accommodate the product WEIGHT of your choice, as advised by you
- **NOTE:** Material to cover the lid frame is not supplied with the kit

The **Aussie UnderCover®** requires a pit or deck opening space (generally between 0.250m and 0.400m wider than your pool on either side) by .400m and .500m deep, plus allowance for suitable drainage as required.

0.250m past the waterline is required on the side the gearbox/motor unit will be installed and normally you would have 0.250m on the other end to balance the system to the pool, but you can reduce the off-side to 0.100m or flush if space is an issue.

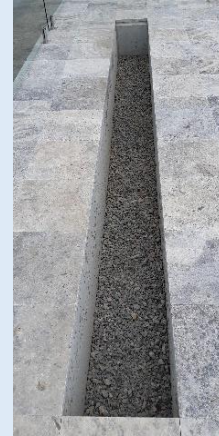


NOTE: If your pool has a step area which will be folded in, the gearbox/motor position works best on the opposite side of the pool to the step position

In all installation methods it is the installation contractor's responsibility to ensure suitable drainage is allowed to enable water to drain freely from the pit. Drainage must be directed away from the pool.

Aussie UNDER COVER

Hidden below ground
pool cover system
1300 722 009



Form pit - allow suitable drainage – install finished surface (concrete, tiles or pavers)

Formal drain or gravel pit and agi line may be appropriate drainage. Concreting the base is not recommended.



measure, trim (if required) and install lid frame - Install gearbox, end mount and tube assembly



Install chosen lid frame covering ie. decking, composite decking or tiles – install pool cover

**In all installation methods suitable drainage must be allowed to enable water to drain freely from the pit.
Drainage must be directed away from the pool.**

② Under Deck Installation Guide & Photos – manual/powerd

The kits are adjustable within the size range listed above and designed for installation by a contractor or home handyman. Super and Custom kits are made to order. Full details provided in the kit installation instructions.

The **Aussie UnderCover®** Kit includes:

- Aluminium lid frame with stainless steel hinges attached, flush mount handle and gas strut
- Roller tube, winder mechanism with extended winding handle and aluminium mounting brackets
- Optional: Pool cover, hall cord and cover attachment kit

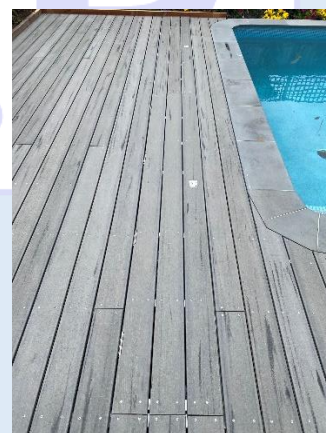
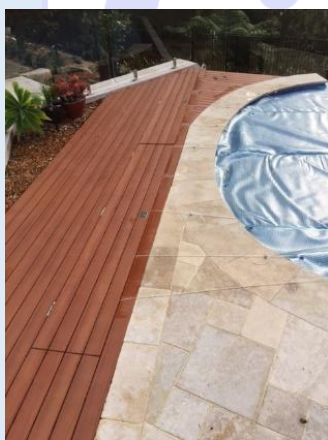
Basic Under Deck installation (ground clearance should be approx 500mm). For decks with clearance less than 500mm we recommend excavating, allowing suitable drainage, and lining the pit with treated pine.

- Insert additional posts and framing in your deck to accommodate the size of the assembled lid frame and provide a mounting surface for the lid and winder gearbox/tube assembly and gas struts (instructions provided)
- Assemble the lid frame and install inside your pit
- Install winder/motor gearbox assembly
- Install tube assembly
- Install handle(s) and strut(s)
- Finish lid frame with tiles, timber, composite timber or tiles to suit your situation
- Hinges are set to accommodate the product of your choice, as advised by you
- Gas struts are provided to accommodate the product WEIGHT of your choice, as advised by you
- **NOTE:** Material to cover the lid frame is not supplied with the kit

The **Aussie UnderCover®** requires a pit or deck opening space (generally between 0.250m and 0.400m wider than your pool on either side) by approx .400m and .500m deep, plus allowance for suitable drainage as required.

REFER TO DECK LAYOUT INSTRUCTIONS.

0.250m past the waterline is required on the side the gearbox/motor unit will be installed and normally you would have 0.250m on the other end to balance the system to the pool, but you can reduce the off-side to 0.100m or flush if space is an issue.

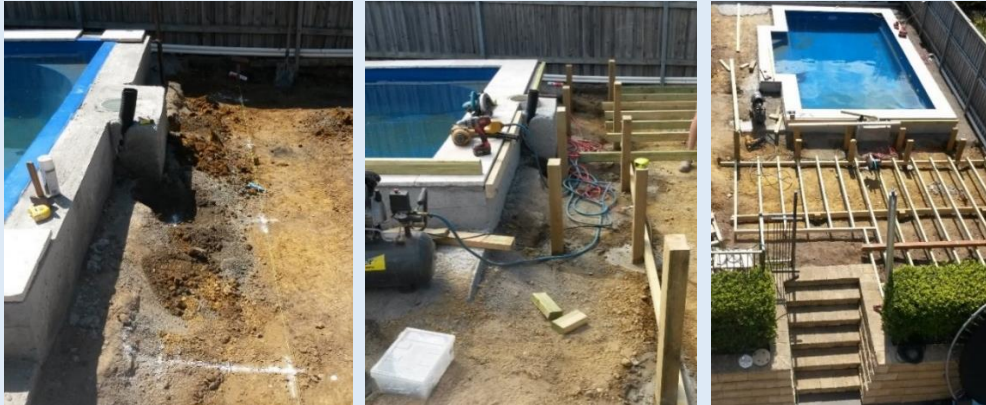


NOTE: If your pool has a step area which will be folded in, the gearbox/motor position works best on the opposite side of the pool to the step position

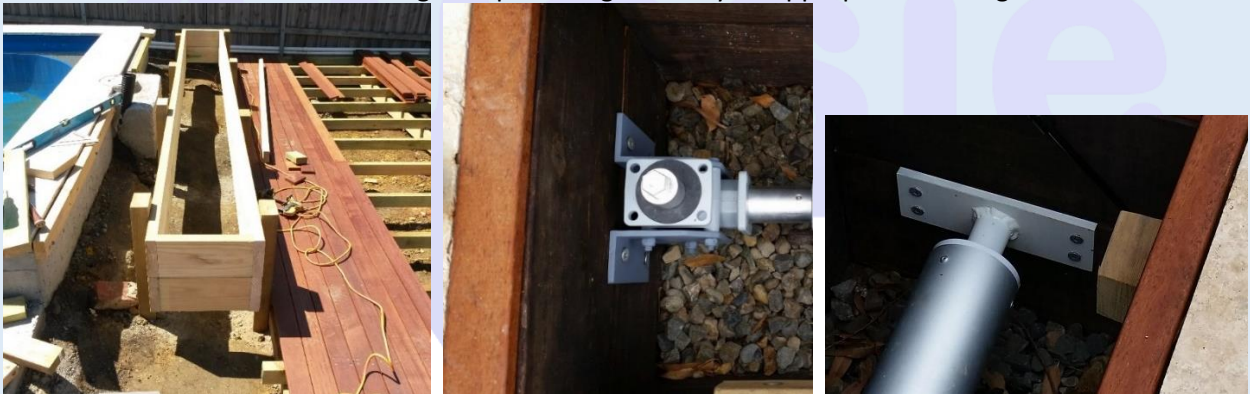
In all installation methods it is the installation contractor's responsibility to ensure suitable drainage is allowed to enable water to drain freely from the pit. Drainage must be directed away from the pool.

Aussie UNDER COVER

Hidden below ground
pool cover system
1300 722 009



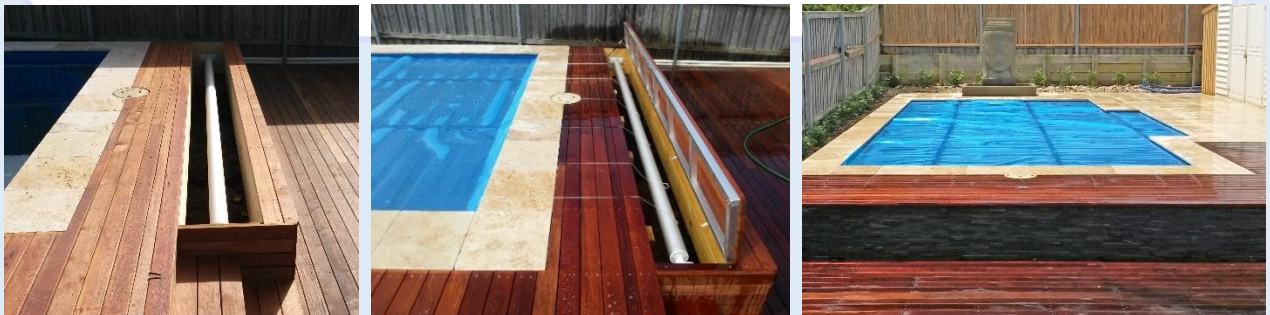
Layout deck to accommodate the opening required for the kit – refer to plan provided with kit
Formal drain or gravel pit and agi line may be appropriate drainage



Install framing to create the deck opening required for the kit – mount gearbox, end mount and tube assembly



Measure and trim the lid frame (if required)



Install the lid frame - apply lid frame cover material (ie decking boards) - install the pool cover

In all installation methods it is the installation contractor's responsibility to ensure suitable drainage is allowed to enable water to drain freely from the pit. Drainage must be directed away from the pool.