

CREATE _____
ARCHITECTURE

Nominated Registered Architect: Scott Carpenter ARB NSW: 7017 QLD: 3539





01	Hello
02	How we work
04	Who we work with
05	Who we are
07	Where we are from
08	Where we are going
10	Alpine
16	Country
24	Coastal
45	Testimonials
46	Get in touch

Contents

Create Architecture specialises in architecture, interior design, consultancy and research. We seek to form genuine relationships and connections with both the client and site. With a deep understanding of the local environment and the unique personal requirements of the intended users, we aim to unearth hidden opportunities that will ultimately inform an architecture that facilitates an enriched lifestyle.

In essence, we create beautiful space.



Hello

Our architecture is always site specific and driven by passive design principles in order to inform an environmentally appropriate response.

Every intention is centered on client fulfillment with equal regard to factors such as budget, operational efficiency, long-term maintenance, comfort and compliance. Our philosophy and process is largely driven by a combination of five fundamental values of Relationships, Connections, Opportunities, Lifestyle and Space.

How we work

Relationships

Successful design is the outcome of a healthy relationship with the client and the site as each will offer certain intricacies to inform a unique and appropriate architectural response.

Connections

Design is a collaborative act or a set of conversations between many. Connections are made on site at different scales and individual connections are prioritised. We collaborate and facilitate further connections between the intended users, professionals, craftspeople and suppliers whom we trust.

Opportunities

Armed with a genuine understanding of our client and site we unearth unique opportunities. We concentrate on resolving key functional planning challenges, all the while incorporating architectural creativity to each evolving design solution.

Lifestyle

Our true measure of success is transforming a client's brief into enduring architecture that enriches their everyday life and promotes a sense of wellbeing and happiness.

Space

The essence of "great space" is measured simply by how it stimulates the senses. It may come from generosity of space, quality of light, material texture, from a commitment to detail or all of these things combined. While each project differs from the last, the essence remains constant.



The Create Architecture team is well versed in all facets of a collaborative approach to project delivery.

Whether as a member of a larger team under the direction of a Project Manager or as the lead role, the Create Architecture team is well versed in all facets of a collaborative approach to project delivery. In addition to our main body of works on the Tweed, Byron and Gold Coasts our team has successfully delivered projects in Australia's major cities, Perth, Brisbane and Sydney as well as the remote locations of Far-North Queensland and Central West NSW. Our client base has ranged from these locations as well as London, Hong Kong, Singapore and the United States. The success of these projects can be contributed to three key factors. A deep understanding of site, a commitment to local professional collaboration and clear communication amongst all stakeholders.



Who we work with

We are a team of dedicated design professionals with a diverse set of backgrounds and experiences. Our creativity is influenced by these experiences which are often drawn from external influences, whether it be travel, outdoor activities or family.



Scott Carpenter

Director / B.Arch.Hons1, BA Arch

When engaged, I believe that the Architect is given the opportunity to enrich a client's life. During the process we inevitably become very passionate and intimately involved with both the client and design. In formulating a brief we feel that it is essential to draw from the client not only the functional or quantitative elements but also the qualitative.



Nic Raath

Partner / B.ArchTech

Nic's background in design, drafting and construction has become an invaluable asset to the team and is proud to be a driving force in the development of designs, documentation and specifications. Nic believes in design that is practical and functional with a strong focus on crafted details and sustainability.



Aline Martins de Lima

Associate / B.Env.Sc, DipBLT

Aline moved from Brazil to Australia in 2011 after graduating in Environmental Science. Aline believes it is possible to have a conscious approach to energy and ecological conservation in the design of the built environment, without compromise. Ensuring that our actions and decisions today do not inhibit the opportunities of the future.

Who we are



Tahlia Wright

Graduate of Architecture / B.Arch M.Arch

Growing up on the Queensland coast Tahlia has an appreciation for the coastal lifestyle and has developed a strong interest in how people live, interact and connect with their environment. Tahlia enjoys working with clients on both the internal and external aspects of their design to create unique and thoughtful spaces that embody their individuality.



Martin Ziarmal

Graduate of Architecture / B.Arch M.Arch

Martin grew up in Stockholm and moved to Australia in 2015 to pursue his dream to become an Architect. He has since graduated from a Master of Architecture with distinction. Martin is passionate about architecture that not only provides shelter but fosters a strong sense of belonging and wellbeing for its inhabitants.



Phillip Reid & Sharon Buchanan

CFO / BCom

Accounts Admin / O.A.M BH1thSc

Philip Reid is our CFO with 28 years experience in Financial Management and Support across a wide range of businesses and industries. This support allows Scott, Nic and the team to focus solely on delivering great projects and outcomes for all clients and industry partners.

Sharon Buchanan is our Accounts and Administration Manager with 15 years experience supporting business across many industries including building, construction, e-commerce and manufacturing.



Scott originally established an architectural drafting practice on Sydney's northern beaches in 1992 and continued to hone his skills in this competitive residential market for ten years. After graduating from The University of New South Wales with first class honours in 2001 he was lured to the Tweed Coast to work with renowned Brisbane based and award winning Architect Geoffrey Pie on the new coastal township of Casuarina Beach. He established Scott Carpenter Architect in 2003 and began specialising in innovative and environmentally sensitive residential design appropriate to the unique Tweed Coast climate. Over the next 20 years, Scott earned a distinguished reputation and developed a prolific body of work consisting of over five hundred built projects stretching the east coast of New South Wales and Queensland. The work of Scott Carpenter Architect has been recognised by over 30 industry awards and publications. 2018 saw the emergence of Create Architecture and the integrated involvement of partners and associates building equity under a united banner. Today sees this energetic team of like-minded creatives building on the tested principals of past to expand the practice into the future.

Where we are from



Create Architecture is excited to be embarking on a new chapter, opening a satellite office in the alpine region of New South Wales - Jindabyne.

The area has been identified by the NSW Government as a Special Activation Precinct with funding to ensure the region is established as a year-round destination. Change is inevitable but should occur in a way that celebrates the uniqueness of this special area and caters for the diversity of its community. We are confident that we can have a positive contribution to the architectural landscape, using our skills of understanding local environment and adapting that to the unique Alpine region to create timeless architecture.

We have undertaken several projects for family and friends in the region and look forward to building on this experience, connecting with its people and creating lasting investments with a strong regional identity.

Where we are going



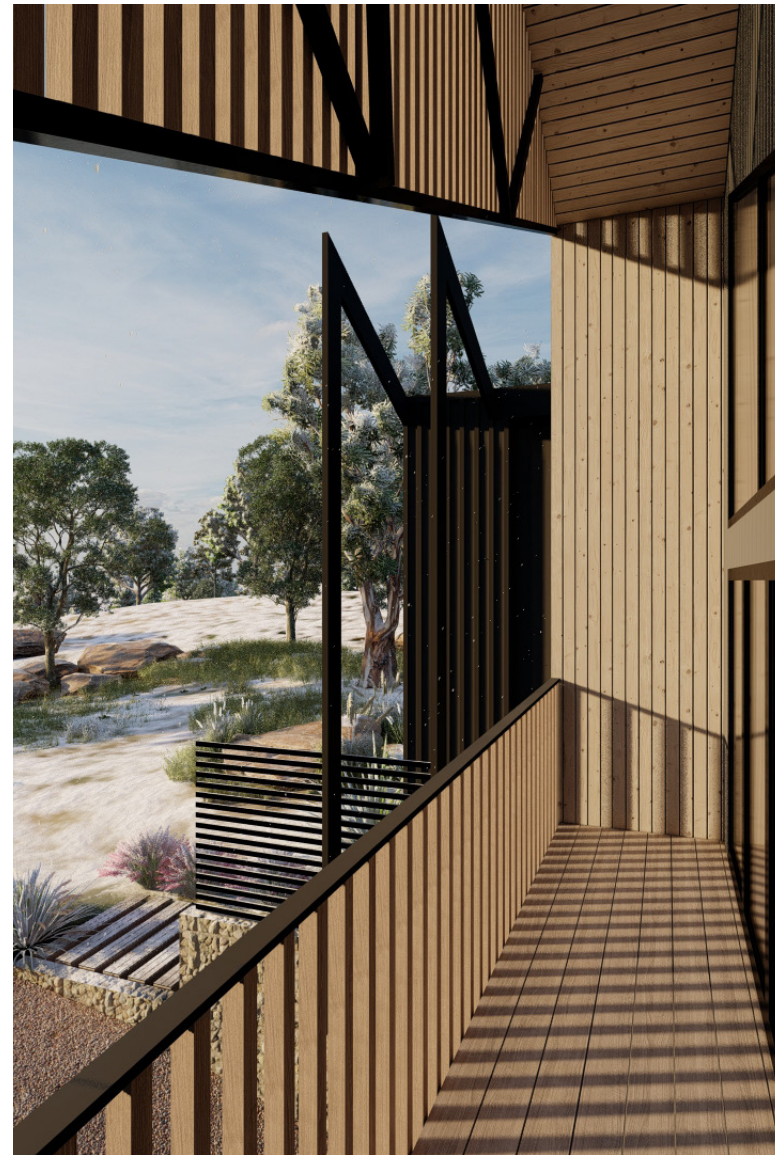
CREATE
ARCHITECTURE

I've had a love affair with this region for over thirty years exploring the back country and ski resorts in winters and riding any track or road I can find in summer.

With family and friends living in the mountains for years, I've drawn from them a strong understanding of the area. Am I a local? Definitely not. Ask me in twenty years if I'm a local and I hope to answer, "I am a tourist embraced by and contributing to the community". I sincerely believe that listening to and fostering relationships with local builders, planners, professionals, suppliers and trades will allow myself and the Create team to intimately understand this unique climate and community to inform an architecture that has a sense of place.

Scott Carpenter
Director - Create Architecture.

Alpine



Grosvenor Holiday House

Location: East Jindabyne, NSW

This is the second home to be designed on the site as a joint venture with my wife and brother. It's fair to say that after spending the first night in home 1, I learned to respect the 120km/hr gale-force winds coming up from lake Jindy and ensured that our second home was well and truly anchored and nestled into the hillside. Using a complementary material palette to House 1, Trimdek colorbond cladding and roofs with inset timber look walls, creates a contemporary alpine barn-like aesthetic. Designed primarily for short-term letting, we created three ensuited master bedrooms and a generous communal living area and kitchen to afford three couples to enjoy the region together. A large wet room, drying room and storage for ski's and bikes ensures guests can bring their adventure toys and enjoy the home year round. The living areas capture the northern light but focus on western views across the lake to the mountains beyond.



Touchdown House

Location: Jindabyne, NSW

Taking cues from those timeless Kosciuszko National Parks buildings of the 1950's, we developed a home with a rich material palette and timeless forms and nestled it under the brow of the hill to look northward towards the hills and lake. Our clients, a local couple deeply entrenched in the community, have built several cabins on their 30 Acre property on the outskirts of town for lucky tourists to enjoy but felt it was time to build something special for themselves. A simple plan orientates the Master Bedroom, Living Areas, and home office to the northern views and a generous helping of double-glazed windows allows the low winter sun to penetrate and heat up the thermal mass of concrete slabs and stone walls. Their local knowledge of climatic conditions informed a plan that captured winter sun and summer breezes but respected the harsh westerly winds that blow from the main range.





Kunuma Duplexes

Location: East Jindabyne, NSW

This large site enjoys views across a gentle slope to a private creek and then the lake and mountains beyond. Taking inspiration from a Scandinavian colour & material palette, it was important to reappropriate the aesthetic to its East Jindabyne setting. With high pitched roofs, raked ceilings, two-story voids and lofted bedrooms, the spaces created within these duplexes are unmistakably alpine in nature. The living spaces and bedrooms are generous but efficient. The forms have been staggered both in plan and section to provide privacy between the two dwellings and follow the contours of the site. We hope that this contemporary twist on a traditional style ensures the homes sit comfortably within their semi-rural / suburban context for many years to come.





CREATE
ARCHITECTURE

When someone says "I'm from the Country" I think that points to a certain culture - not necessarily a place.

I was born and grew up in Central West NSW. I was a 'townie' but spent many a weekend on mate's properties. And while I spent my last two years of high school and my twenties being educated in the city and twenty odd years on the coast, it's fair to say I'm a country boy at heart. Create Architecture has taken on many projects in country and rural settings over the years netting some exemplary results. Many of our 'Country' homes have enjoyed terrific publicity and achieved industry awards. Most pleasing of all though is that they are now home to many very satisfied clients. I believe that their success has come from listening to our clients' specific needs and developing a strong understanding of each particular site. Each rural home is as unique and varied as their environment and community. Our clients often underestimate their own understanding of their natural environment but once prompted with a few questions we typically unveil what is special about place, and when we do that, we create homes that are appropriate to their setting and a reflection of our client's personalities.

Scott Carpenter
Director - Create Architecture.

Country





Audrey's Farm

Location:	Tumbulgum, NSW
Completed:	2020
Builder:	Custom Coast Homes
Photographer:	Ravens At Odds

After being entrusted to design his first beachside pad in 2015, this would be the second home we designed for Leon, where he and his partner Monique and two beautiful British Bulldog fur babies, Audrey, and Alfie, could escape into the idyllic riverside farm-life at North Tumbulgum in the Tweed Valley.

Inspired by the farmhouses of the Queenstown Lakes and Central Otago Regions of New Zealand's South Island which draw on the simple forms of the farm shed and present as objects in the landscape, we took on the challenge of appropriating that aesthetic into a sub-tropical climate.

The couple adopted a cost-effective approach that would prioritise quality of space over quantity and encourage a simple palette of materials. Vaulted ceilings in the living areas create a sense of spatial generosity and strategically frame rural views to the East, while internally the palette remained simple with burnished concrete floors and plasterboard walls creating the backdrop for rich blackbutt highlights.





450

The View

Location:	Terranora, NSW
Completed:	2020
Builder:	BCI Hawker Custom Homes
Photographer:	Cameron Murchison Photography

Sometimes the beauty of a project is not so much about the building but it's surrounds. When Kate & Steve purchased their vacant lot on the Terranora escarpment with a sweeping and seemingly endless vista of ocean, city, lakes and ranges, this home was always going to be about the view.

The form was envisaged as a simple rectangle subtly tucked under the brow of the ridgeline with a soaring roof and continuous wall of glass opening to the Northwest and the world beyond.

Particular emphasis was given to creating a deliberate entry sequence. You arrive off Terranora Road into a private courtyard and while you know there must be something special on the other side it is momentarily held back. Once you pass through the oversized copper doors into the Entry Breezeway the view engulfs you to the point where you may forget about the house entirely. Withholding the view selfishly makes it a part of the home rather than the building feeling like it is an object in the landscape. In fact, there are limited opportunities to look back at the home but that is fine as it all about every single room enjoying and embracing the same enviable outlook.

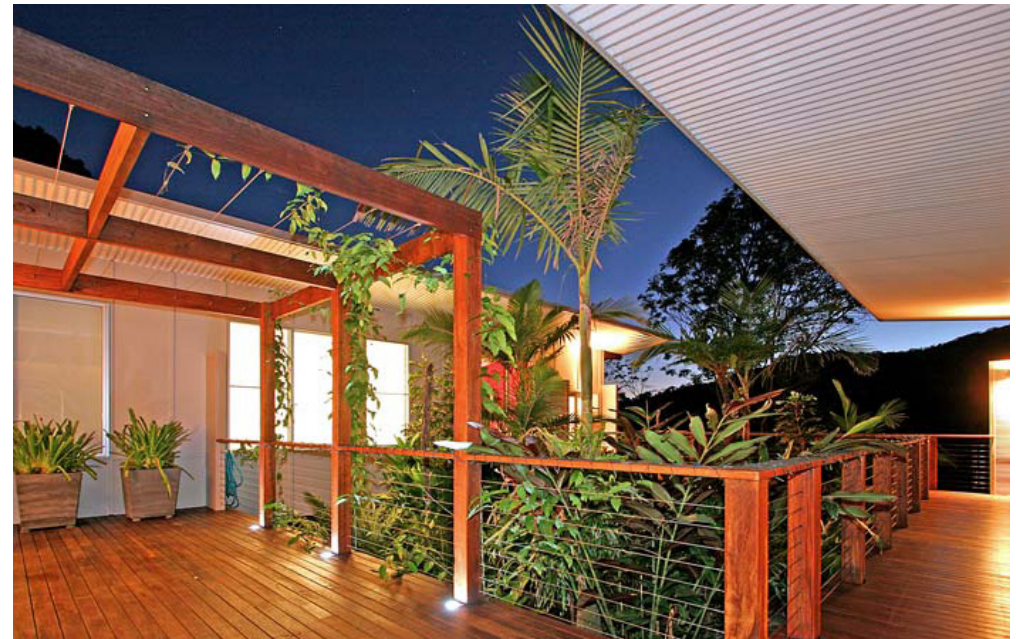




Cudgera Creek House

Location:	Pottsville, NSW
Completed:	2005
Builder:	Seabreeze Homes
Photographer:	Brent Middleton

Nestled on the side of a steep hill behind the seaside village of Pottsville, this single storey country home sits lightly on its hillside landscaped setting. The home is now barely visible through the magnificent landscaped jungle but when you do find your way through the winding timber boardwalk to the entry breezeway you discover a series of understated linked pavilions wrapped around a central courtyard enjoying the sun, breezes, serenity and all the other spoils of a country hillside retreat.





CREATE _____
ARCHITECTURE

That sensation of sand between your toes, the light prickle of salt on your skin, the smells, sounds and taste of the ocean - who doesn't love being on the coast?

We have absolutely loved designing and delivering homes on the Tweed Coast for over twenty years and that will never change. We have developed a love, understanding and respect for this unique climate and created homes for clients, many of which we now call friends. While the next chapter for Create Architecture may see us venture further into the country and alpine regions of NSW, we will always maintain a strong presence and focus on the Queensland and NSW Coast.

Scott Carpenter
Director - Create Architecture.

Coastal





The Echo Beach House

Location:	Casuarina, NSW
Completed:	2018
Builder:	J H Building and Landscape Design
Photographer:	Andy Macpherson Studio

In 1949, Time magazine observed Neutra's designs eloquently stating, "their beauty, like that of any sea shell, is more than skin-deep – practical, not pretentious" and we would like to think that this essence, beyond the crisp aesthetic, is something that also exists in the Echo Beach House.

Nestled behind the dunes of Casuarina Beach, NSW, the Echo Beach House speaks to the client's appreciation for entertaining, uncomplicated coastal living and surf culture. The entry sequence is invigorated through a memorable threshold over water and relates inherently to the principle indoor and outdoor living areas .



Castles on Kingscliff

Location:	Kingscliff, NSW
Completed:	2016
Builder:	Steve Kerr Homes
Photographer:	Andy Macpherson Studio

'Castle's on Kingscliff' was perceived as a landmark perched on the crest of Kingscliff Hill enjoying 360 degree views. The site informed an eclectic composition of architectural forms. Inspired by a giant nautilus shell, the concept centres around a sculptural helical staircase connecting three levels of living including a one bedroom 'apartment' on the first floor for the retired owners, a 'hose-out holiday home' for family on the ground floor and a shared 'observatory / bar' on the third level.

By night 'the lantern' stair shields the home from the headlights of a busy intersection and by day the timber battened sculpture shelters the home from the afternoon sun. Copper blade walls are angled to reflect the afternoon sun, frame ocean views and provide privacy from the neighbours. The landscape views of the Border Ranges and Kingscliff Beach are framed by the clean white picture-box of the first-floor living room.



The Eclipse House

Location:	Casaurina, NSW
Completed:	2017
Builder:	Seabreeze Homes
Photographer:	Andy Macpherson Studio

Inserted into an established beachside vernacular that favoured an eclectic mix of shapes and materials, the Eclipse House developed a simple form of two timber boxes addressing the east and west facades and split in the middle to create an easily identifiable entry point on the south

The clients asked us to help 'unpack and simplify their lives'. We felt that the building should reflect those sentiments and what developed was a simple open plan prioritising coherent living, sleeping and working spaces wrapped in a palette of robust organic materials of concrete, stone and wood chosen to withstand the rigours of the harsh beachside environment while weathering and ageing gracefully.





The House Behind the Dunes

Location:	Cabarita, NSW
Completed:	2020
Builder:	Steve Kerr Homes
Photographer:	Cam Murchison Photography

Positioned on one of the Tweed Coast's best beachfront sites, the 'House Behind the Dunes' has made the most of the unique opportunities afforded to it. Arranged over three levels, the inner layout offers each bedroom and living space a unique view towards the ocean and towards Norries Headland. Expansive decks provide an extension of the living space on each level. The ground level decks help connect the building to the dune landscape and pool area, the first-floor outdoor area wraps around the north-east and provides the ideal scene for entertaining and finally an intimate and private deck off the master bedroom creates and intimate area for the retired couple to relax with a sundowner.



Luke and Amanda's Beach House

Location:	Casuarina, NSW
Completed:	2016
Builder:	Hammerhead Building Projects
Photographer:	Andy Macpherson Studio

Presented with a brief to design a 'Hamptons' inspired beach house, we appropriated key design principles that could instead relate to both the Queenslander and the established beach shack vernacular.

The result is an elegant nod to an assumed 'style' with a contemporary Australian ingenuity aligned to the sub-tropical climate. The built form is a combination of substantial elements that can respond to the rigors of a harsh beachside environment and lightweight materials that together create a rich yet restrained result. The exterior prioritises simple lines, gable forms and symmetry and work together with the high lofted ceilings and thoughtfully positioned window openings to unify the design. The design takes the core principles from an assumed style spoken during the briefing stages of the process and also functions as a considered home – accommodating to the needs of a family, home-run businesses, the beachside climate and the established vernacular.



Waz and Nick's Place

Location:	Casaurina, NSW
Completed:	2020
Builder:	Innova Projects
Photographer:	Andy Macpherson Studio

With abundant natural light, cross ventilation, views to the beach reserve and lush private courtyards and pool, Waz and Nick's Place was conceived as an oasis in which to relax and unwind after travelling the world as flight attendants.

The home may have been influenced by the clean lines and minimal uncluttered interiors of Richard Neutra and the simple rectangular geometry and stacked block feature walls of Paul Rudolph's Sarasota homes of the 1950's, however, it is unmistakably recognised by its own regional characteristics, reflecting its sub-tropical beachside community. The key design considerations were to create a seamless connection to the outdoors with the kitchen as the focal point of the home a Hi-end home automation system with subdued lighting and discreet Australian made fixtures and fittings. We focused on using a robust material palette suited to the marine environment with warm timber accents, dark features and crisp white contrasting weatherboards. The white portal framed gatehouse is accessed from the laneway and is the formal entry for the house. The raised concrete step with feature strip lighting is a space to gather and chat before transitioning to the house.





The Kiff Porsie

Location:	Lennox Head, NSW
Completed:	2020
Builder:	Coakers Building Solutions
Photographer:	Andy Macpherson Studio

Kiff Porsie (Afrikaans slang for 'Nice House') was thus conceived as a pair of contemporary pavilions, one for living and one for sleeping linked by a split level breezeway filtered from the street and sky but open to a central, protected communal space where family and friends come together.

The pavilions, extruded 'container like' boxes, hover above the street, engaging with the view and passers-by with modest decks and floor to ceiling windows and doors. The boxes stretch out towards the valley, capturing northern light and cooling breezes in the process, terminating with larger western decks, structure expressed and unearthing space below for guest rooms and communal indoor entertainment space .



Markgraaff Residence

Location:	Casuarina, NSW
Completed:	2017
Builder:	Hammerhead Building Projects
Photographer:	Andy Macpherson Studio

The Markgraaff Residence was designed for a young and growing family looking to prioritise contemporary design while at the same time maximising the potentials of a block of land so close to the beach and Casuarina town centre.

The design incorporates a main double story house and a single story detached granny flat for added rental income. To create privacy between the two dwellings, a central access breezeway and courtyard garden separates the two zones. The granny flat is forward facing, while the main residence stretches out and looks to gain northern light across the yard. As the master bedroom suite faces out to the street and to the west, a creative screening solution was devised to the outside of a shallow deck. This operable screening of timber louvre banks, serves as a screen for the western sun as well as adding warmth to the façade and playing with light as it enters the space internally.



Breeze@Salt

Location:	Salt, NSW
Completed:	2020
Builder:	BCI Hawker Custom Homes
Photographer:	Elisha Lindsay Photography

Breeze@Salt was born from a desire to create a holiday escape for a family with two beautiful young boys, one who needs a wheelchair for mobility. The brief was to design an accessible and liveable home for everyone and one which would appeal to other families with similar needs and a desire to taste beach life.

It was decided that the programme would see seamless indoor and outdoor living on the ground floor and sleeping on the first floor, accessed by a centrally located lift and overly generous hallways. Light and airflow was a must for all spaces as bedrooms were to have the same priority as living spaces. In winter, the home is bathed in light and warmth but shaded perfectly in the hotter months to create a cool sanctuary aided by breezes controlled throughout by internal and external louvred walls.

Contemporary minimalist forms are enriched by a palette of materials chosen to withstand the environment while aging gracefully. The bleached timber box appears to float effortlessly over its stone & concrete base but is in fact only made possible by the engineering of a huge internal steel truss that facilitates the 4m cantilever! Internally, blonde timbers, lightly coloured polished concrete floors and minimalist forms rule but offset by black metallic accents.

Embracing its beachside setting, Breeze@Salt has become a welcomed weekend sanctuary to relax, unwind and calm the soul





Suncatcher House

Location:	Casuarina, NSW
Completed:	2017
Builder:	Sanctuary 28
Photographer:	Andy Macpherson Studio

The underlying principle behind the design of this house for a young family was to literally capture the sun on a site that is prominently oriented east-west.

The Suncatcher House is thus a response to a challenging site as well as the need to efficiently satisfy the needs of an energetic household. There are diverse and unique offerings of light throughout the home - via high windows filtering light into a raked volume deep in plan, dappled light through bamboo screening atop the pergola and patterned light through external breezeblock elements. These gestures leave the house with a light-filled airiness that is an unexpected outcome on the restrained suburban block. As this was the young families' first home, the design needed to be cost efficient and as such light and spatial quality are prioritised over excess to achieve a humble house designed with the idea of quality over quantity.



Bell Residence

Location:	Casuarina, NSW
Completed:	2017
Builder:	Hammerhead Building Projects
Photographer:	Andy Macpherson Studio

The Bell Residence was designed to accommodate a young and growing family.

The creative clients were heavily inspired by mid-century modern architecture, landscapes and interiors. Our goal was to provide the clients with simple, clean forms using a mid-century inspired material palette and architectural accents. Small courtyard spaces are dotted around the ground floor and prioritise the northern aspect as do all habitable rooms and spaces.



Healthy House

Location:	Casuarina, NSW
Completed:	2016
Builder:	Sanctuary 28
Photographer:	Andy Macpherson Studio

Simple and efficient coastal living was central to the Healthy House design philosophy.

The house was planned to have the kitchen as the absolute heart and soul so that the occupants could facilitate a healthy lifestyle so important to them. The kitchen opens out to the north facing yard, as to all bedrooms and living spaces. The house hints at a mid-century inspired minimalistic aesthetic, with a material palette of light timber, white rendered walls and a blue entry door as a fun accent.





Happyness House

Location:	Cabarita, NSW
Completed:	2016
Builder:	Sanctuary 28
Photographer:	Andy Macpherson Studio Happyness Photography

One half of the client couple is a photographer who understands the value of light.

The other half enjoys an appreciation of an active coastal lifestyle and with this the importance of robust design elements that help to facilitate an easy transition from the surf to the home. The main public zone of the house provides a solid connection between the front yard pool area and the backyard space. The sliding doors on either end disappear out of sight and the concrete flooring is continued to the external areas to enhance this feeling of openness. The master suite on the first floor, overlooks a double height void over the entry which frames views of adjacent mature gardens to the north and views of the Border



Farrel Shilton Residence

Location:	Casuarina, NSW
Completed:	2013
Builder:	Seabreeze Homes
Photographer:	Owen McGoldrick Photography

The Casuarina Beach House was devised as a vehicle to accommodate the journey from a hectic inner city Melbourne lifestyle to one of laissez-fair beachside living and entertainment....not retirement but a fresh and exciting chapter.

Inspired by the clean lines of the 1950's Palm Springs architecture and styling of Richard Neutra, our clients had a clear aesthetic vision but understood that they had to temper their aspirations to meet a strict budget. Designed for a couple with no children and a revolving door of visitors, the temptation to arrange the plan as a generous one bedroom Master Villa with a separate two bedroom Guest Wing linked by a covered breezeway seemed to be too strong to ignore.

A tight Client / Architect relationship was quickly established which enabled us to collate our philosophies of design, form, function, and tectonics to create a symbiotic harmony of Art, Architecture and Landscape.



Cameron Residence

Location:	Woodgate Beach, QLD
Completed:	2011
Builder:	Wagner Constructions
Photographer:	Owen McGoDrick Photography

Bound by North Queensland's natural marshland and the high water mark of the Fraser Coast, this beach house was designed as a holiday retreat for a Brisbane family with grown up children.

There was a desire to divide the home into two distinct areas. The ground floor acts as a teenage retreat with a robust, hose-out feel. The third story lookout hosts the master bedroom with 360 degree panoramic views of the ocean to the east and marshland to the west. The middle story brings these two distinct areas together as a communal gathering space with a refined finish. The living area has the ability to completely open up to the deck. The perimeter of this decked space can be screened off from the elements in order to provide an additional 80m² of open plan living and entertainment space. Because the vertical connection between the spaces was so important, a feature was made of the staircase, which not only screens the western sun but also creates a light void, providing penetrating northern light into the home. While the house is inevitably oriented toward the remarkable views over Harvey Bay and beyond, the premise to achieve northern light and passive design principles still remains integral to the design.



Over the past 20 years Create Architecture have created over 400 projects helping transform the North Coast's architectural vernacular and enriching our clients lives.

“From our very first onsite meeting with Scott, we knew he was the architect for us!! He designed a house that complements our lifestyle perfectly!! He spent a lot of time getting to know our interests and how we would use the spaces and we couldn't be more thrilled with the result. It has been life changing in the best possible way.”

—Vanessa Brown

“Scott and his team have been amazing to work with! Scott personally took out initial ideas and brief and nuted out a design in front of us which was exactly what we were after. The holistic service we received has resulted in what we believe will be the house of our dreams. We've also had the pleasure of working closely with his partner Nic who has an amazing eye for detail and who regularly sends us progress shots as he visits the site after work which we delight in seeing as we're not able to get to site very often. Scott and his team are very transparent when it comes to costings and will work to find a solution if you need to scale things back. A very friendly, passionate and talented team that know the area inside and out!

—Fleur Anning

“Create Architecture were a joy to collaborate with (and I emphasise the word 'collaborate'). Scott and his highly skilled colleagues really listened, and heard, all that we talked about throughout the entire consultation process and beyond. They then contributed their own professional expertise and creativity and a most harmonious project ensued. The superbly completed house is a full realisation of our vision.”

—Alan Wilson and Trevor McCosker

Testimonials



We welcome you to connect with us and would love to work together with you to realise your next creative project. We are always happy to meet on site or at a location convenient to you.

Office

570 Casuarina Way
Casuarina Beach, 2487, NSW

Enquiry

P: (02) 6674 0488
info@createarchitecture.com.au

Scott Carpenter

M: 0419 259 426
scott@createarchitecture.com.au

createarchitecture.com.au

Nominated Architect: Scott Carpenter

NSW Architects Registration Board: 7017

QLD Architects Registration Board: 3539

Get in touch

C
^

thank you
