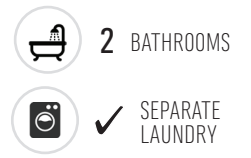
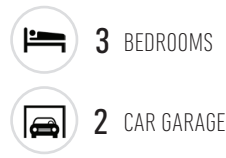


Ruru

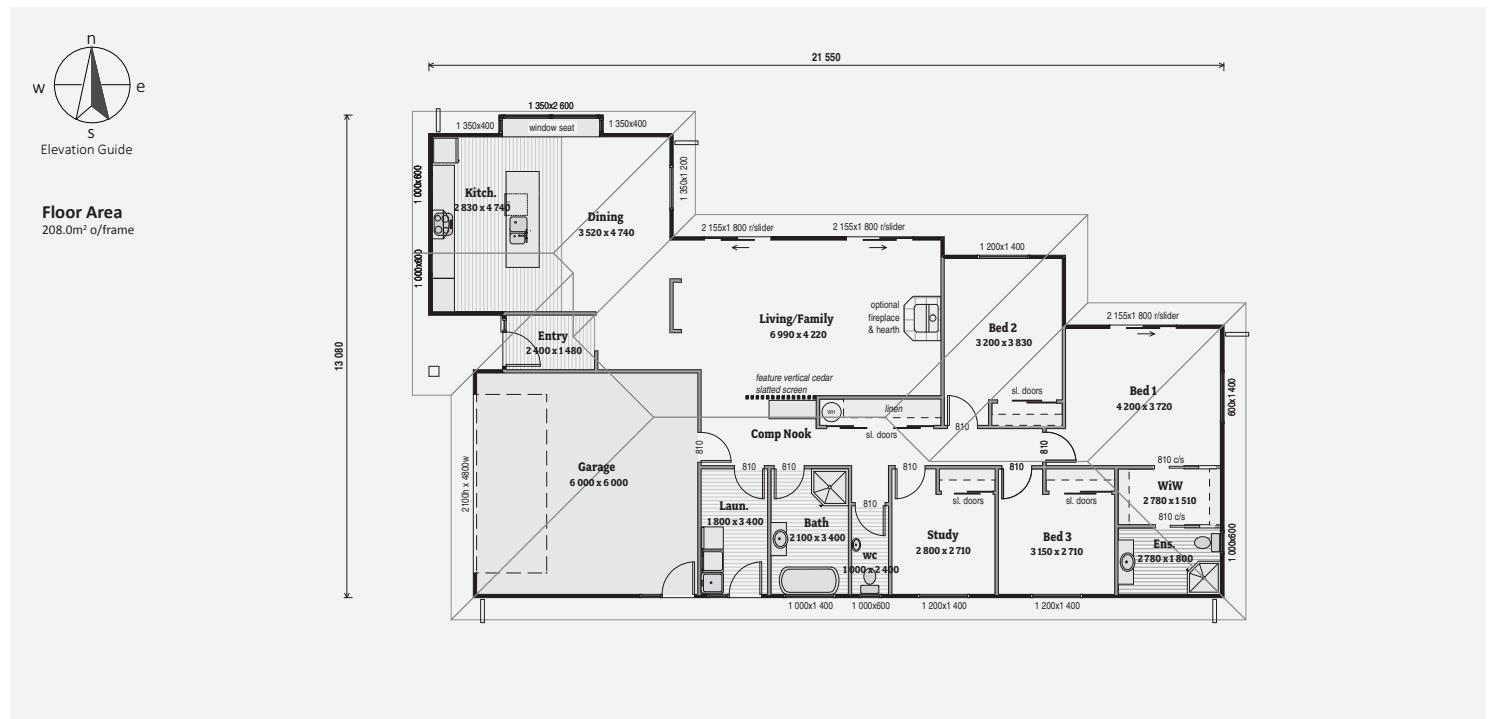
3 Bdrm / 208m²

This welcoming family home offers generous living areas and a surprising amount of bedroom space. Character features include a large protected entry, a window seat designed for enjoying mid-morning sun, and a contemporary slatted screen between the family room and computer nook.



KEY FEATURES OF THIS HOME

- Weatherboard cladding
- Open plan living
- Computer nook
- Double garage





Floor Area
208.0m² o/frame

