



CRYSTAL chandeliers  
CHAIN GANG



Bespoke,  
contemporary glass  
chandeliers made  
by world-leading  
artists Leanne  
Williams and Jim  
Dennison of the  
Crystal Chain Gang.

Collaborating since 2003, the pair have a reputation for pushing the boundaries of art, craft and design and making handcrafted glasswork perfectly suited to both public and private spaces. Contact them directly to discuss an existing work or new commission that will capture the light and bring an innovative and ethereal edge to any interior.

---

ENQUIRIES@CRYSTALCHAINGANG.CO.NZ  
WWW.CRYSTALCHAINGANG.CO.NZ



# Angelshare

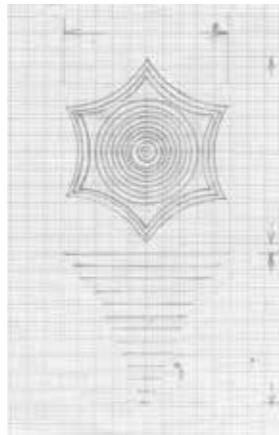
2015



# Buller

2017









# Black Ice

2017





# Light at the End of the Tunnel

2016







# The Twins

2017





Mistletoe  
2017

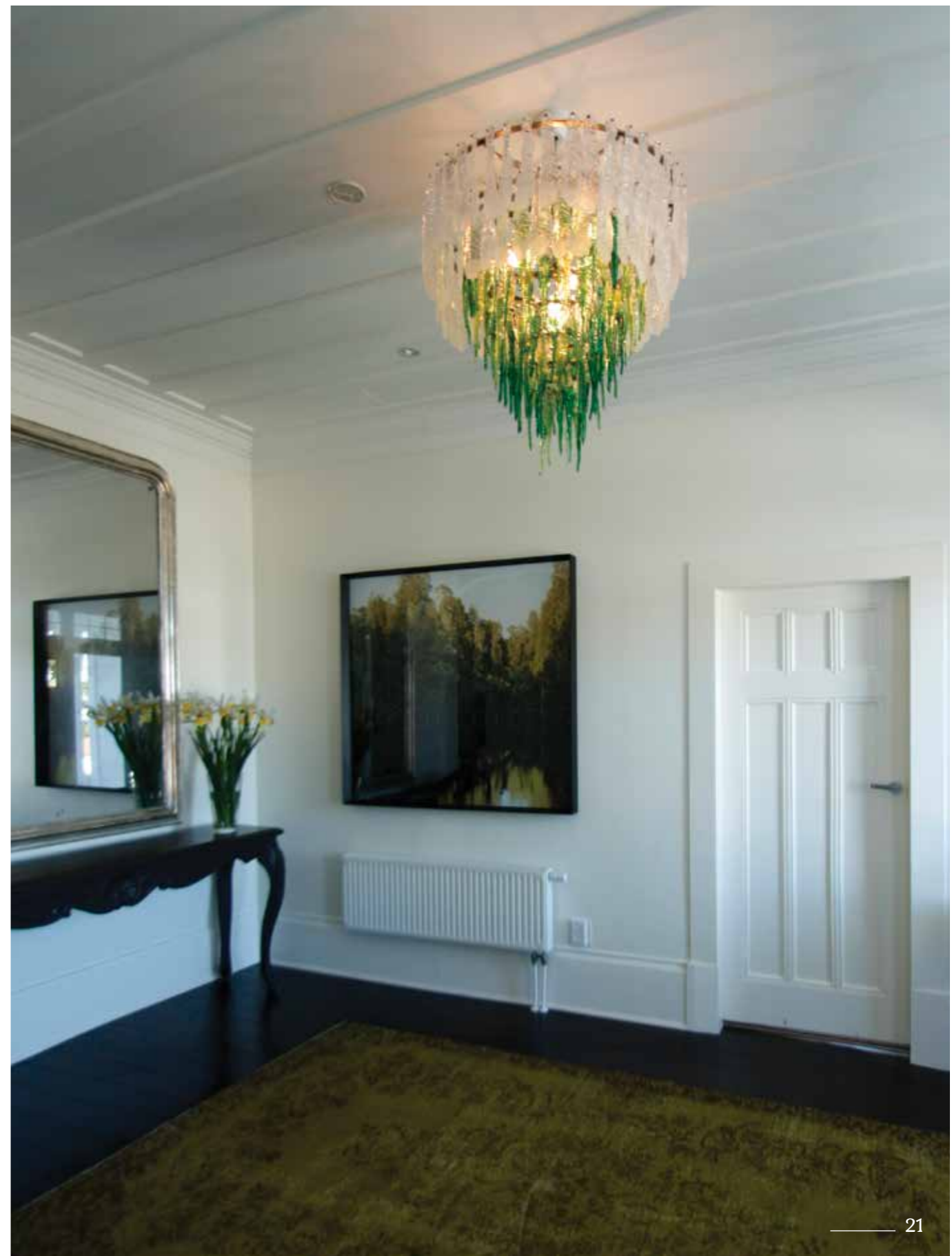








Walters  
2014

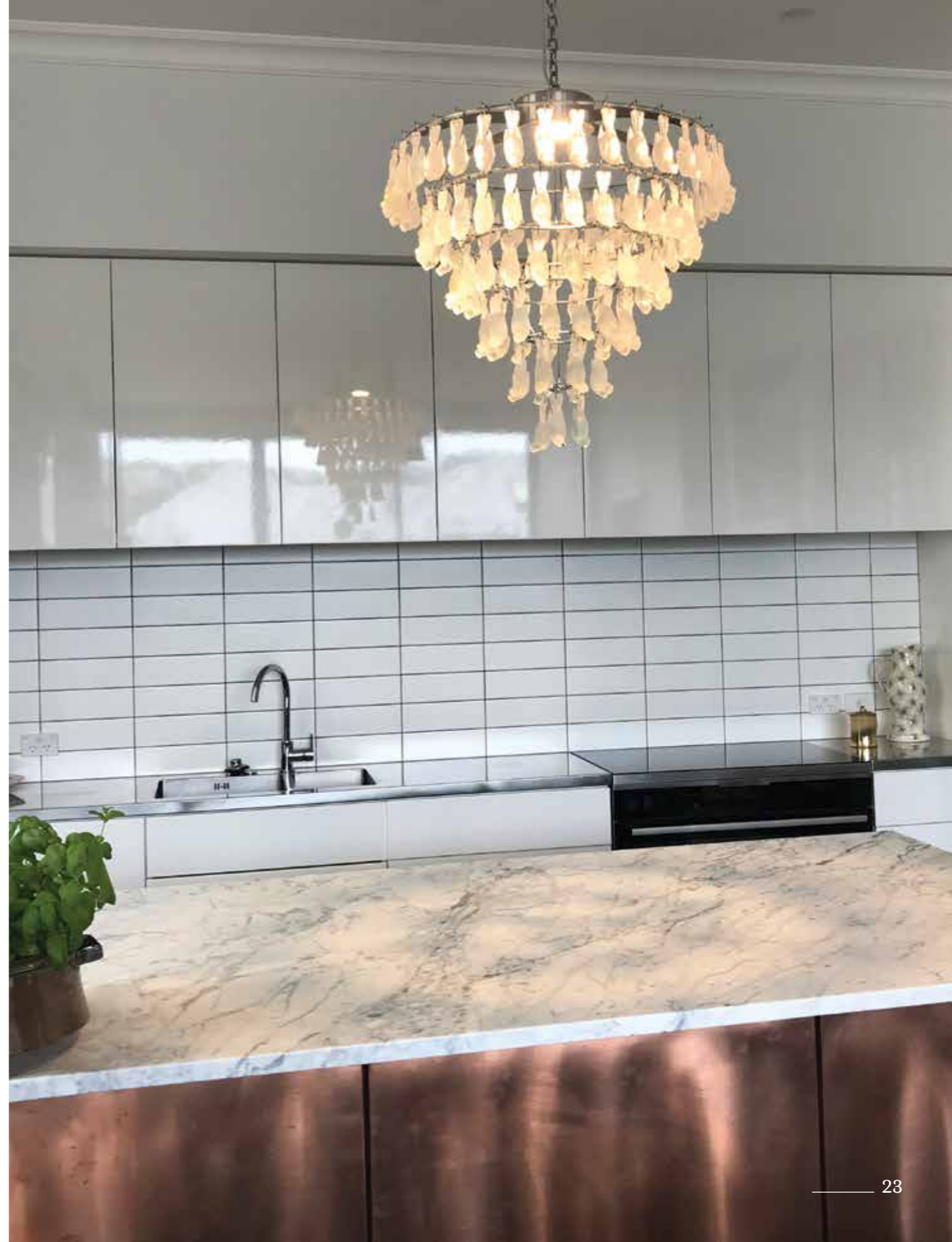






# R.I.P

2017







Sunstrike  
2017

04 \_\_\_\_\_

**Angelshare** 2015

Pressed Glass  
Stainless steel frame  
3 x LED  
590mm diameter  
830mm length  
28kgs

06 \_\_\_\_\_

**Buller** 2017

Pressed Glass  
Stainless steel frame  
1 x LED  
650mm diameter  
700mm length  
26kgs

10 \_\_\_\_\_

**Black Ice** 2017

Pressed Glass  
Stainless steel frame  
1 x LED  
590mm diameter  
630mm length  
23kgs

12 \_\_\_\_\_

**Light at the End of the Tunnel** 2016

Pressed Glass Crystal Drops  
Individually cast glass diamonds and crystal drops.  
Cut wooden crystals  
Stainless steel frame  
1 x LED  
1200mm diameter  
2200mm length  
120kgs

14 \_\_\_\_\_

**The Twins** 2017

Pressed Glass  
Stainless Steel Frame  
4 LED  
1100mm diameter  
1500mm length  
90kg each

16 \_\_\_\_\_

**Mistletoe** 2017

Pressed Glass  
Stainless steel frame  
1 x LED  
550mm diameter  
600mm length  
24kgs

20 \_\_\_\_\_

**Walters** 2014

Pressed Glass  
Electroplated steel frame  
1 x LED  
530mm diameter  
580mm length  
26kgs

22 \_\_\_\_\_

**R.I.P** 2017

Cast Glass  
Stainless steel frame  
1 x LED  
600 mm Diameter  
600 mm Length  
18 kg

24 \_\_\_\_\_

**Sunstrike** 2017

Pressed Glass  
Stainless Steel Frame  
1 x LED  
610mm diameter  
720mm length  
28kg

**Acknowledgments**

**Studio design team**

Leanne Williams, Jim Dennison, Alex Penfold

**Hot shop team**

Phil Stokes, Michael Waysmith, Leanne Williams, Jim Dennison, Alex Penfold

**CAD design team**

Jonathon Mountfort, Luke Walker







The makers of exquisite  
New Zealand chandeliers  
for the world to enjoy

---

ENQUIRIES@CRYSTALCHAINGANG.CO.NZ  
WWW.CRYSTALCHAINGANG.CO.NZ

