

# Portfolio



**claire  
hammond**



**Claire Hammond** DID DINZ  
**Design Director - ritual interiors**

Claire is an award-winning interior designer who has built an impressive multi-disciplinary portfolio spanning Vancouver, Sydney and Auckland. Drawing from her experience leading the design of some highly-acclaimed projects overseas, Claire has developed a holistic and considered approach to interior design.

Diploma of Interior Design (DID)  
Member of the Designers Institute of New Zealand (DINZ)

Category Winner  
2021 Restaurant & Bar Design Awards  
Hotel - Australia & Pacific  
Woodcut - Design Team Leader for Loopcreative

A photograph of a modern dining room. In the foreground, a light-colored wooden dining table with a rounded end is set with several clear glass water glasses and a pitcher. Four wooden chairs with black metal frames are tucked under the table. In the background, a kitchen area features white cabinetry, a sink with a chrome faucet, and a window with white frames. A large, glowing, oval-shaped pendant light hangs above the table. The floor is made of light-colored wood. The word "Residential" is overlaid in the center of the image.

Residential

# grey lynn.

Project Grey Lynn Residence  
Year 2022  
Type Residential

- Rendered Services
- Concept Design
  - Spatial Planning
  - Design Development
  - 3D Renders
  - Joinery Design
  - Material and Finishes Selection
  - Furniture Selection
  - Appliances Selection
  - Lighting Design
  - Construction Drawings
  - Consultant Coordination
  - Tender Analysis
  - Site Inspections
  - Site Queries
  - Project Administration
  - Project Delivery



ritual  
interiors

# black oak & walnut.

Project Black Oak & Walnut  
Residence  
Year 2021  
Type Residential

Rendered Services  
Concept Design  
Spatial Planning  
Design Development  
3D Renders  
Material and Finishes Selection  
Fittings and Furniture Selection  
Appliances Selection  
Lighting Design



ritual  
interiors

# st michaels residence.

Project St Michaels Residence

Year 2022

Type Residential

### Rendered Services

Concept Design

Spatial Planning

Design Development

3D Renders

Joinery Design

Material and Finishes Selection



ritual interiors

# saint heliers residence.

Project Saint Heliers Ensuite  
Year 2022  
Type Residential

- Rendered Services**
- Concept Design
  - Spatial Planning
  - Design Development
  - 3D Renders
  - Joinery Design
  - Material and Finishes Selection
  - Lighting Design
  - Construction Drawings
  - Consultant Coordination
  - Tender Analysis
  - Site Inspections
  - Site Queries
  - Project Administration
  - Project Delivery



**ritual interiors**

# west tamaki residence.

Project West Tamaki Residence  
Year 2021  
Type Residential  
Size 35m<sup>2</sup>

Rendered Services  
Concept Design  
Spatial Planning  
Design Development  
3D Renders  
Material and Finishes Selection  
Fittings and Furniture Selection  
Lighting Selection  
Construction Drawings



ritual  
interiors



# white concrete.

Project White Concrete Ensuite

Year 2021

Type Residential

Size 8m<sup>2</sup>

## Rendered Services

Concept Design

Spatial Planning

Design Development

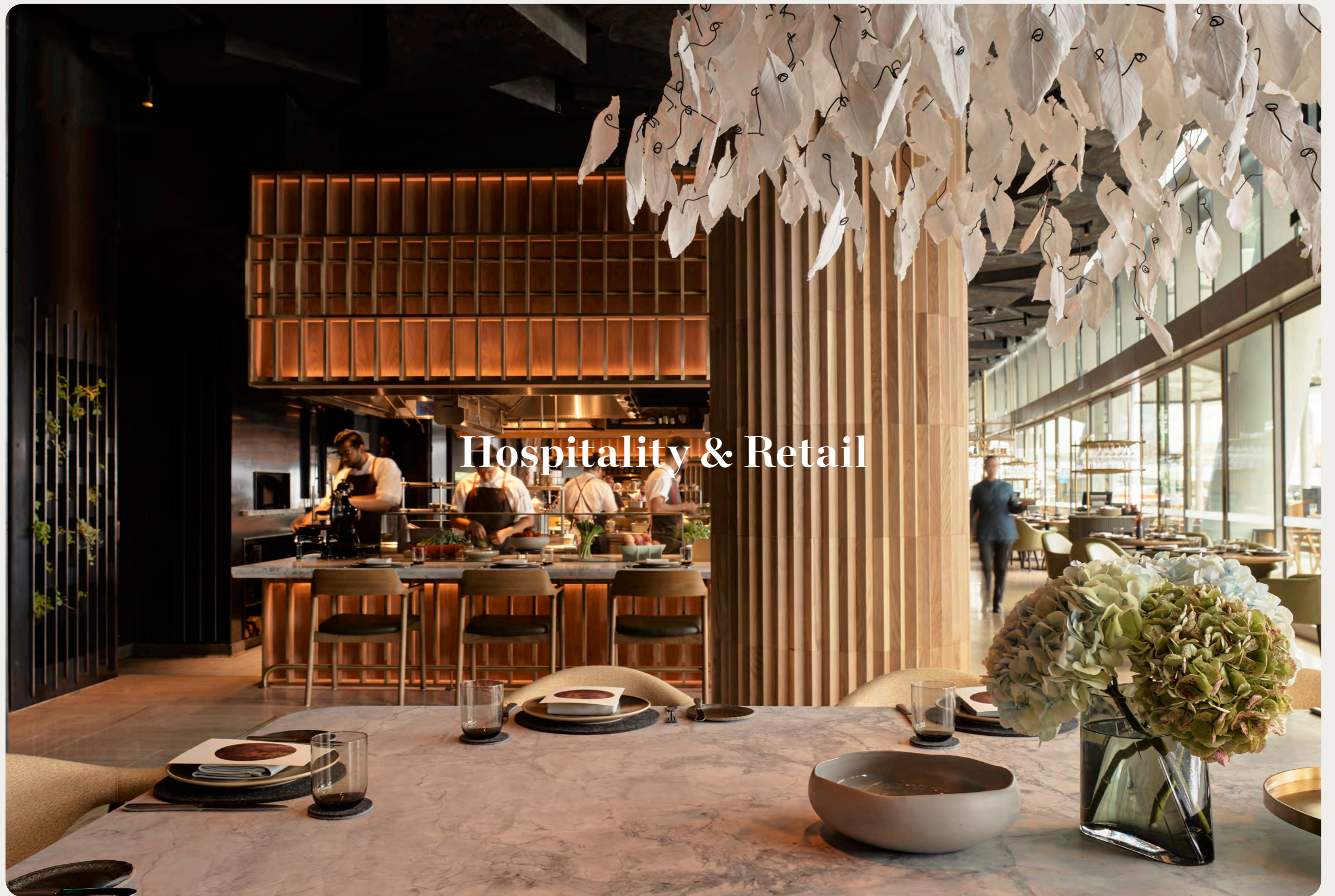
3D Renders

Material and Finishes Selection

Fittings and Furniture Selection

Lighting Selection





# Hospitality & Retail

# woodcut.

**Restaurant & Bar  
Design Awards**  
Winner

Client Crown Resorts Sydney  
Interior Design loopcreative  
Location Barangaroo, Sydney

Project Woodcut  
Year 2018-2020  
Type Hospitality  
Size 1000m2

Rendered Services  
Concept Design  
Spatial Planning  
Design Development  
Joinery Design  
Material and Finishes Selection  
Furniture Selection  
Construction Drawings  
Kitchen Planning and Coordination  
Consultant Coordination  
Shop Drawing Review  
Site Queries  
Project Administration

Photography Anson Smart

**loopcreative**



Woodcut is a world-class restaurant at the new Crown Resorts Sydney, which provides guests with a unique dining experience that celebrates Australian produce and cooking with wood, charcoal and steam.

As Interior Designer and Lead Project Coordinator, Claire Hammond worked closely with acclaimed restaurant operators, project managers, services consultants and builders to design and construct the award-winning fitout.

Involved in all aspects of the project from concept design to completion over the course of three years, Claire was the first point of contact for operators and wider project delivery team.



# woodcut.

**Restaurant & Bar  
Design Awards**  
Winner

Client Crown Resorts Sydney  
Interior Design loopcreative  
Location Barangaroo, Sydney

Project Woodcut  
Year 2018-2020  
Type Hospitality  
Size 1000m2

## Rendered Services

Concept Design  
Spatial Planning  
Design Development  
Joinery Design  
Material and Finishes Selection  
Furniture Selection  
Construction Drawings  
Kitchen Planning and Coordination  
Consultant Coordination  
Shop Drawing Review  
Site Queries  
Project Administration

Photography Anson Smart

**loopcreative**



The challenge of a large restaurant is to create intimacy within the space. Woodcut has overcome this challenge by design with a residential scale in mind and an orchestral-approach to service.

The planning consisted of a series of smaller dining areas, including private dining rooms, an exclusive chef's table, kitchen counter dining, bar counter dining and external terrace dining spaces, all with sightlines of the open kitchens that reinforce the traditional methods of cooking using wood, charcoal and steam.

# woodcut.

**Restaurant & Bar  
Design Awards**  
Winner

Client Crown Resorts Sydney  
Interior Design loopcreative  
Location Barangaroo, Sydney

Project Woodcut  
Year 2018-2020  
Type Hospitality  
Size 1000m2

## Rendered Services

- Concept Design
- Spatial Planning
- Design Development
- Joinery Design
- Material and Finishes Selection
- Furniture Selection
- Construction Drawings
- Kitchen Planning and Coordination
- Consultant Coordination
- Shop Drawing Review
- Site Queries
- Project Administration

Photography Anson Smart

**loopcreative**



# woodcut.

## Restaurant & Bar Design Awards

Winner

Client Crown Resorts Sydney  
Interior Design loopcreative  
Location Barangaroo, Sydney

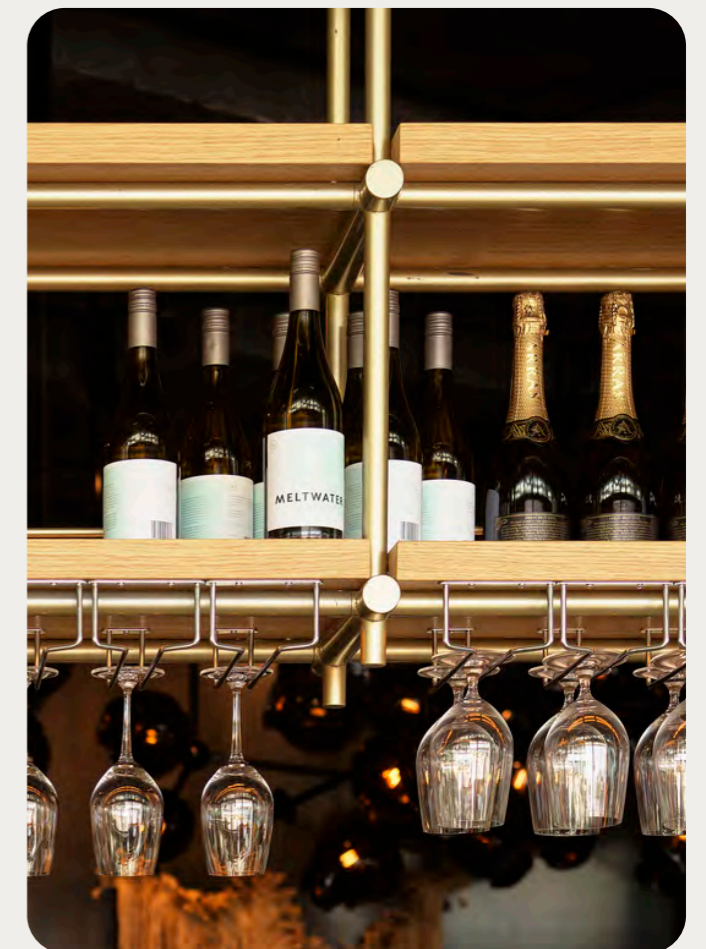
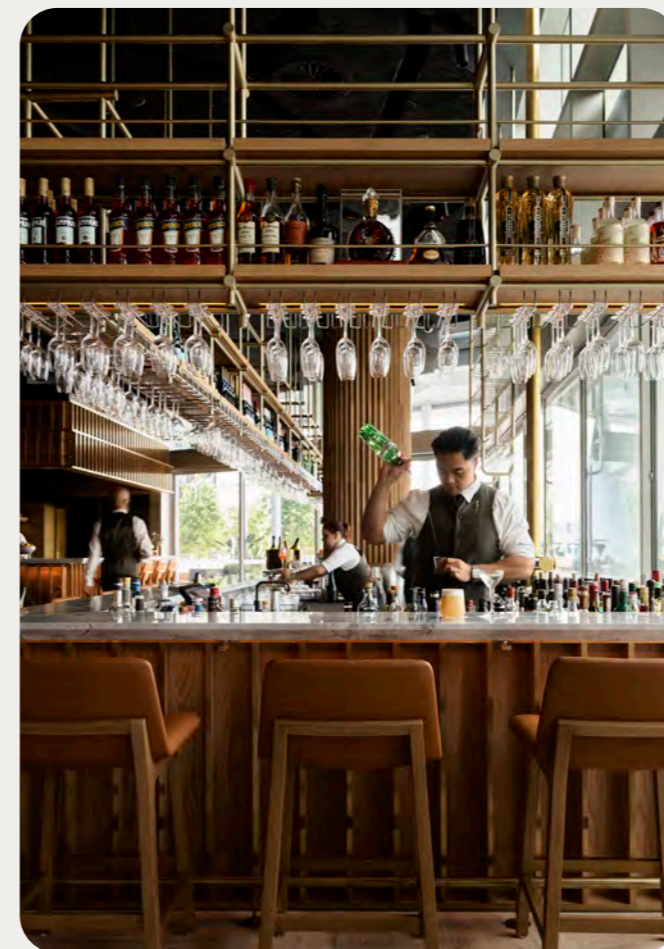
Project Woodcut  
Year 2018-2020  
Type Hospitality  
Size 1000m2

### Rendered Services

- Concept Design
- Spatial Planning
- Design Development
- Joinery Design
- Material and Finishes Selection
- Furniture Selection
- Construction Drawings
- Kitchen Planning and Coordination
- Consultant Coordination
- Shop Drawing Review
- Site Queries
- Project Administration

Photography Anson Smart

loopcreative



# woodcut.

**Restaurant & Bar  
Design Awards**  
Winner

Client Crown Resorts Sydney  
Interior Design loopcreative  
Location Barangaroo, Sydney

Project Woodcut  
Year 2018-2020  
Type Hospitality  
Size 1000m2

- Rendered Services
- Concept Design
- Spatial Planning
- Design Development
- Joinery Design
- Material and Finishes Selection
- Furniture Selection
- Construction Drawings
- Kitchen Planning and Coordination
- Consultant Coordination
- Shop Drawing Review
- Site Queries
- Project Administration

Photography Anson Smart

**loopcreative**



# woodcut.

**Restaurant & Bar  
Design Awards**  
Winner

Client Crown Resorts Sydney  
Interior Design loopcreative  
Location Barangaroo, Sydney

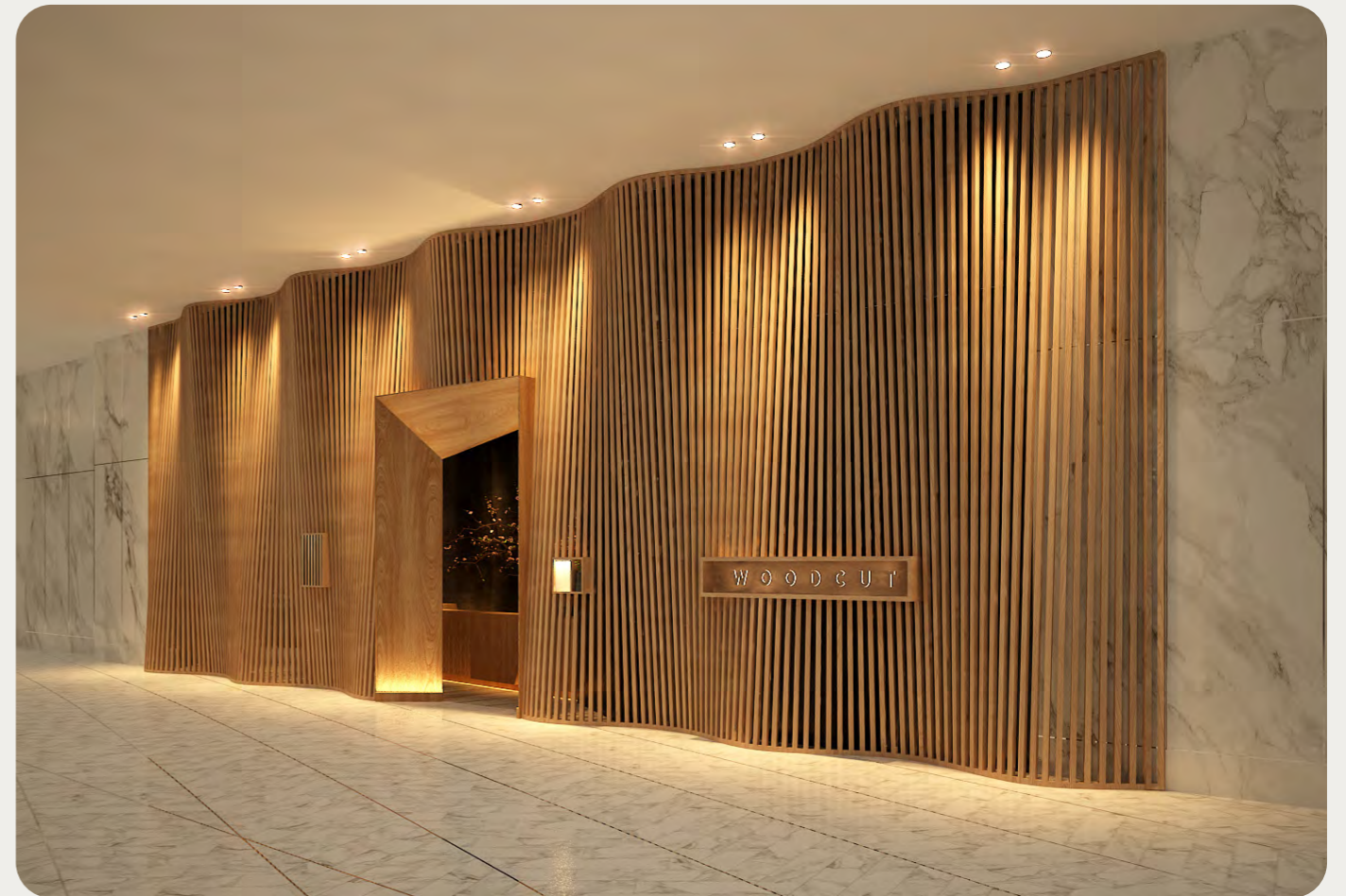
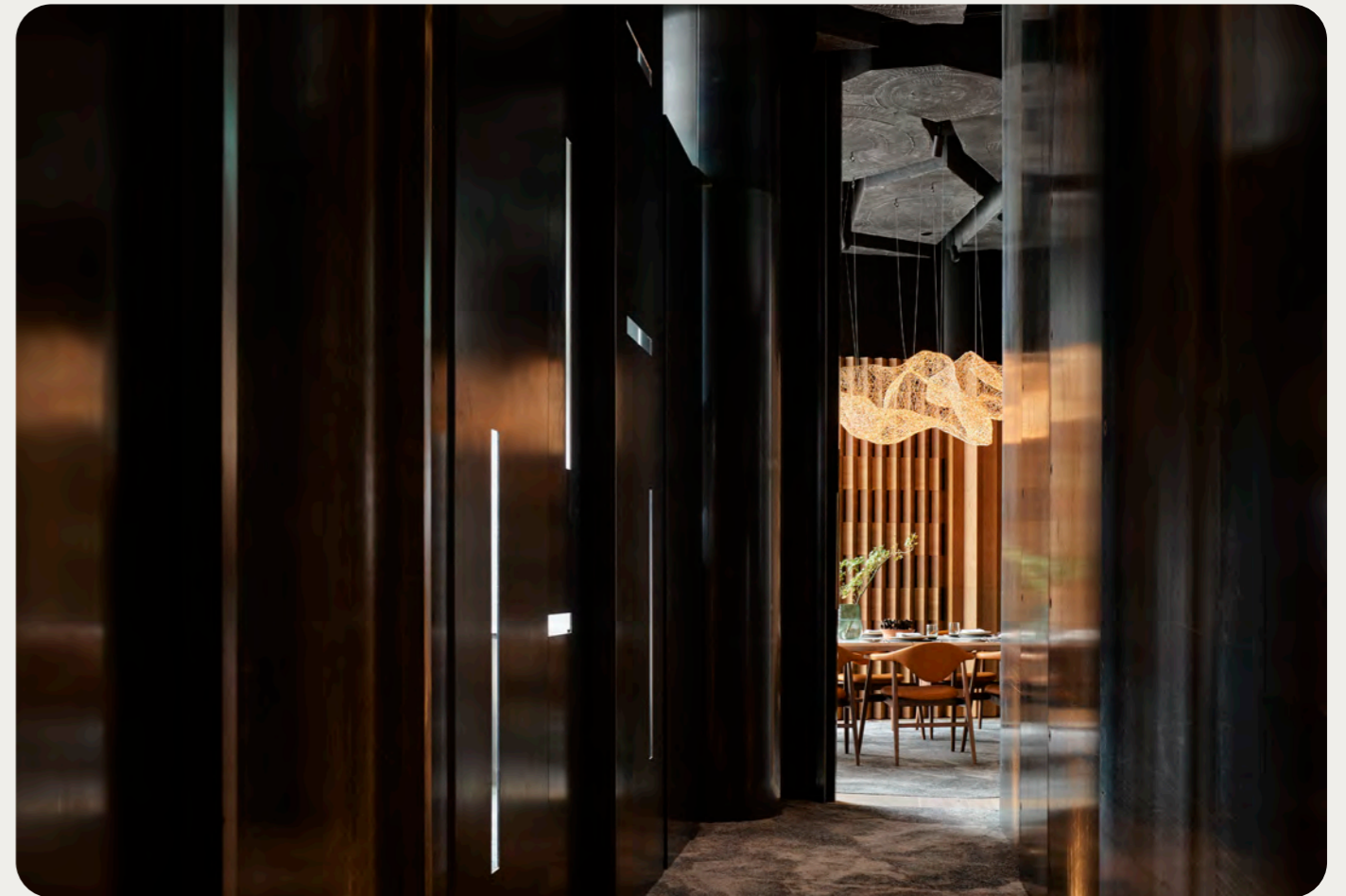
Project Woodcut  
Year 2018-2020  
Type Hospitality  
Size 1000m2

## Rendered Services

Concept Design  
Spatial Planning  
Design Development  
Joinery Design  
Material and Finishes Selection  
Furniture Selection  
Construction Drawings  
Kitchen Planning and Coordination  
Consultant Coordination  
Shop Drawing Review  
Site Queries  
Project Administration

Photography Anson Smart

**loopcreative**





# locali.

Client Romeos IGA Foodhall  
Interior Design loopcreative  
Location George St, Sydney

Project Locali by Romeo's  
Year 2020  
Type Retail / Hospitality

## Rendered Services

Spatial Planning  
Design Development  
Joinery Design  
Construction Drawings  
Kitchen Design  
Consultant Coordination  
Tender Analysis  
Shop Drawing Review  
Site Queries  
Project Administration

Photography Robert Walsh



Exuding Mediterranean panache and abundance, Locali by Romeo's heightens the supermarket experience. Comprising an artisanal bakery, espresso coffee, pizzeria and dedicated cheese room opposite a central deli counter, with seated areas for casual dining adjacent to each hospitality offering.

These allow a discerning lunchtime crowd to enjoy a quick counter meal between meetings, or a leisurely cheese platter which might stretch to a wine after hours. All of which has been meticulously overseen by consulting Chef, Orazio D'elia of Matteo Double Bay and DownTown.



# locali.

Client Romeos IGA Foodhall  
Interior Design loopcreative  
Location George St, Sydney

Project Locali by Romeo's  
Year 2020  
Type Retail / Hospitality

Rendered Services  
Spatial Planning  
Design Development  
Joinery Design  
Construction Drawings  
Kitchen Design  
Consultant Coordination  
Tender Analysis  
Shop Drawing Review  
Site Queries  
Project Administration

Photography Robert Walsh



# bellucci.

Client Nahas Group  
Interior Design loopcreative  
Location Australia Square, Sydney

Project Bellucci Cucina + Enoteca  
Year 2017  
Type Hospitality

**Rendered Services**  
Concept Design  
Spatial Planning  
Design Development  
Joinery Design  
Material and Finishes Selection  
Furniture Selection  
Construction Drawings  
Kitchen Design  
Services Coordination  
Tender Analysis  
Shop Drawing Review  
Site Queries  
Project Administration



# koi gelato.

Client Koi Dessert Bar  
Interior Design loopcreative  
Location North Ryde, Sydney

Project Koi Gelato  
Year 2018  
Type Hospitality

Rendered Services  
Concept Design  
Spatial Planning  
Design Development  
Joinery Design  
Material and Finishes Selection  
Furniture Selection



# social eatery.

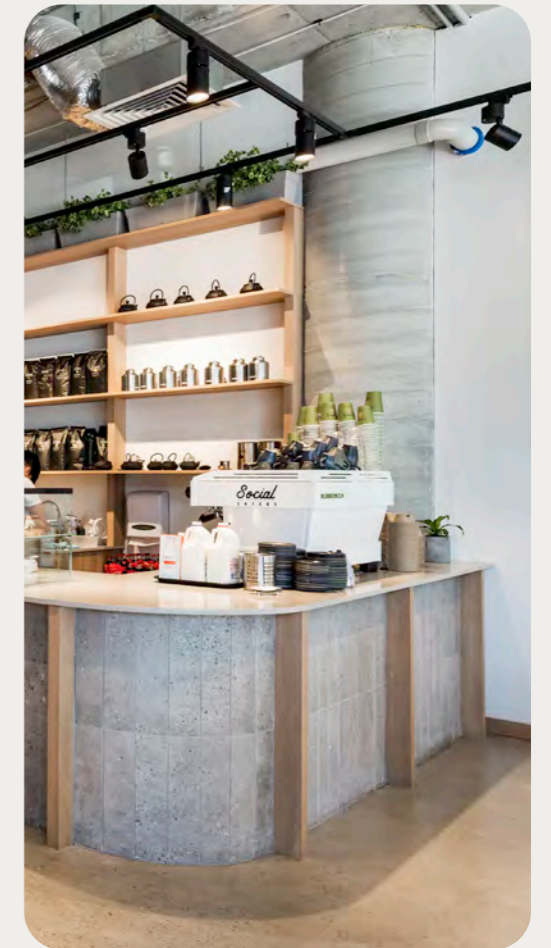
Client Social Eatery  
Interior Design loopcreative  
Location Mascot, Sydney

Project Social Eatery  
Year 2019  
Type Hospitality

Rendered Services  
Concept Design  
Spatial Planning  
Design Development  
Joinery Design  
Material and Finishes Selection  
Furniture Selection  
Construction Drawings  
Kitchen Design  
Services Coordination  
Tender Analysis  
Shop Drawing Review  
Site Queries  
Project Administration

Photography Michael Wee

loopcreative



# whisk & pin.

Client Whisk & Pin Bakery  
Interior Design loopcreative  
Location The Rocks, Sydney

Project Whisk & Pin  
Year 2019  
Type Retail / Hospitality

- Rendered Services**
- Concept Design
  - Spatial Planning
  - Design Development
  - Joinery Design
  - Material and Finishes Selection
  - Furniture Selection
  - Construction Drawings
  - Kitchen Design



# golston jewellery.

Client Golston Jewellery  
Interior Design loopcreative  
Location Westfield Pitt St, Sydney

Project Golston Jewellery  
Year 2018  
Type Retail

## Rendered Services

Spatial Planning  
Design Development  
Joinery Design  
Construction Drawings  
Services Coordination  
Tender Analysis  
Site Queries  
Project Administration

Photography Michael Wee



# camperdown fitness.

Client Camperdown Fitness  
Interior Design loopcreative  
Location Camperdown, Sydney

Project Camperdown Fitness  
Year 2018  
Type Retail

Rendered Services  
Concept Design  
Spatial Planning  
Design Development  
Joinery Design  
Material and Finishes Selection  
Construction Drawings





# nando's parramatta.

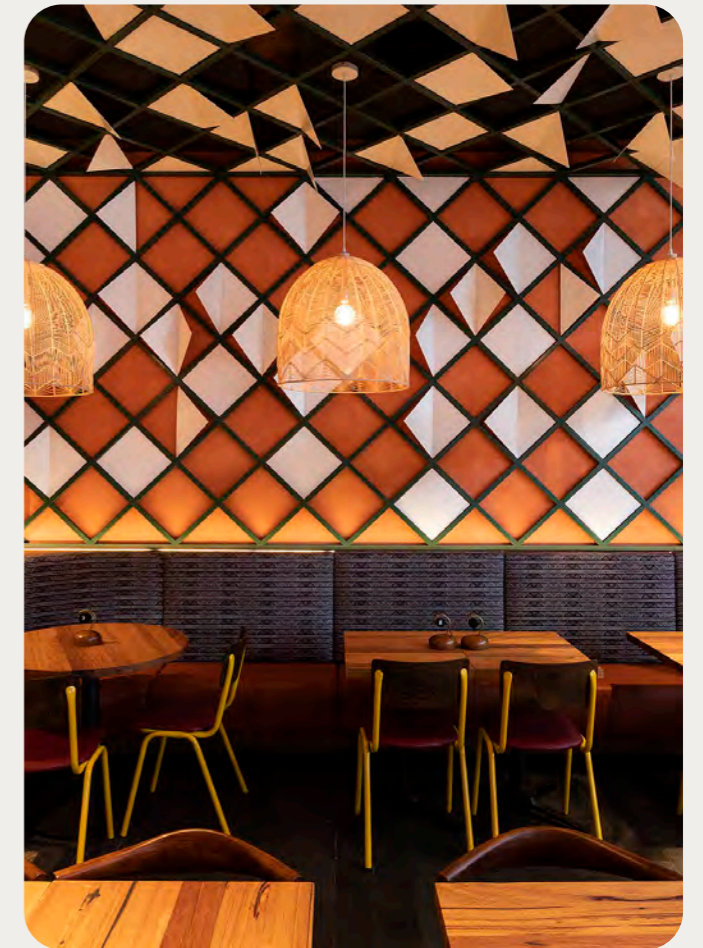
Client Nando's Australia  
Interior Design loopcreative  
Location Parramatta, Sydney

Project Nando's Parramatta  
Year 2019  
Type Hospitality

## Rendered Services

Concept Design  
Spatial Planning  
Design Development  
Joinery Design  
Material and Finishes Selection  
Furniture Selection  
Construction Drawings  
Kitchen Design  
Services Coordination  
Site Queries  
Project Administration

Photography Andrew Worssam



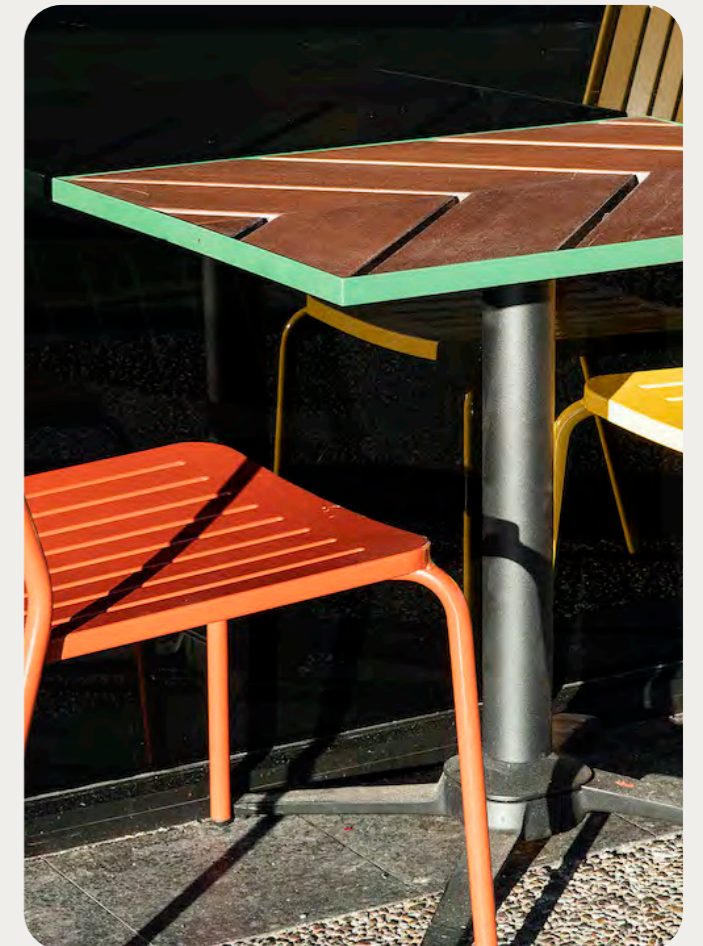
# nando's buranda.

Client Nando's Australia  
Interior Design loopcreative  
Location Buranda, Brisbane

Project Nando's Buranda  
Year 2019  
Type Hospitality

Rendered Services  
Concept Design  
Spatial Planning  
Design Development  
Joinery Design  
Material and Finishes Selection  
Furniture Selection  
Construction Drawings  
Kitchen Design  
Services Coordination  
Site Queries  
Project Administration

Photography Andrew Worssam

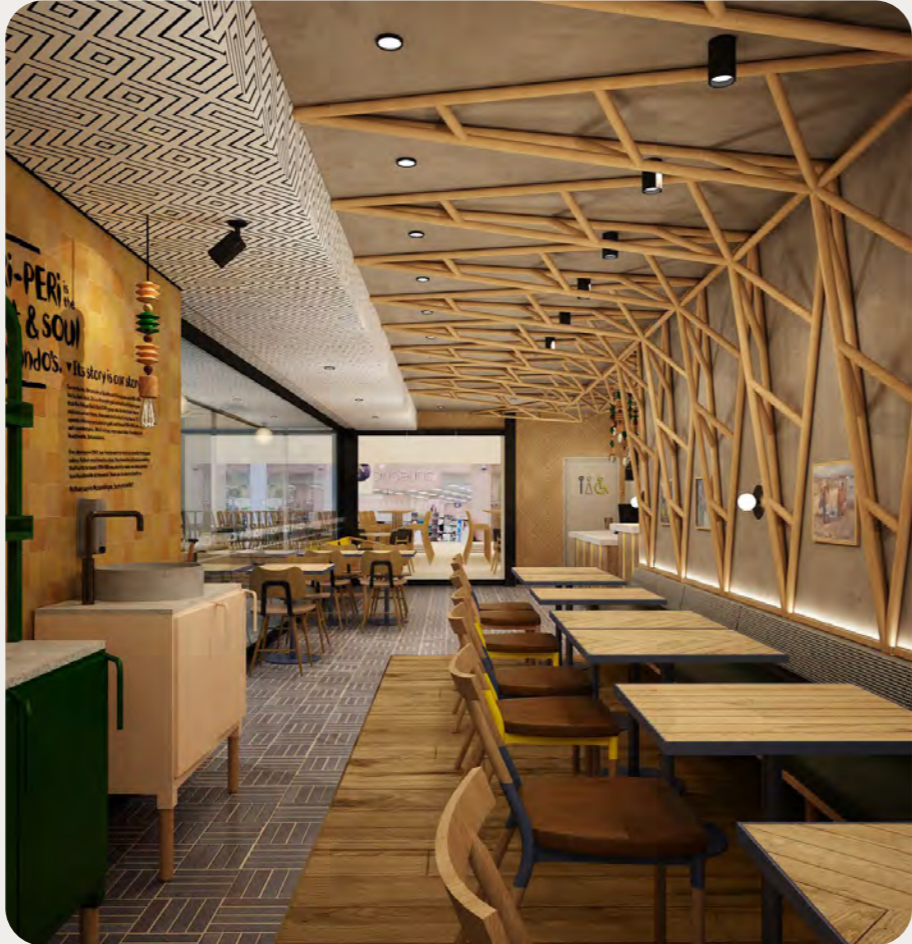


# nando's brimbank.

Client Nando's Australia  
Interior Design loopcreative  
Location Brimbank, Melbourne

Project Nando's Brimbank  
Year 2018  
Type Hospitality

**Rendered Services**  
Concept Design  
Spatial Planning  
Design Development  
Joinery Design  
Material and Finishes Selection  
Furniture Selection  
Construction Drawings  
Services Coordination  
Site Queries  
Project Administration



# nando's epping.

Client Nando's Australia  
Interior Design loopcreative  
Location Epping, Melbourne

Project Nando's Epping  
Year 2019  
Type Hospitality

Rendered Services  
Concept Design  
Spatial Planning  
Design Development  
Joinery Design  
Material and Finishes Selection  
Furniture Selection  
Construction Drawings  
Services Coordination  
Site Queries  
Project Administration





**claire  
hammond**

+64 21 739 105

[claire@ritualinteriors.co.nz](mailto:claire@ritualinteriors.co.nz)