



Floor Area 192 m<sup>2</sup>

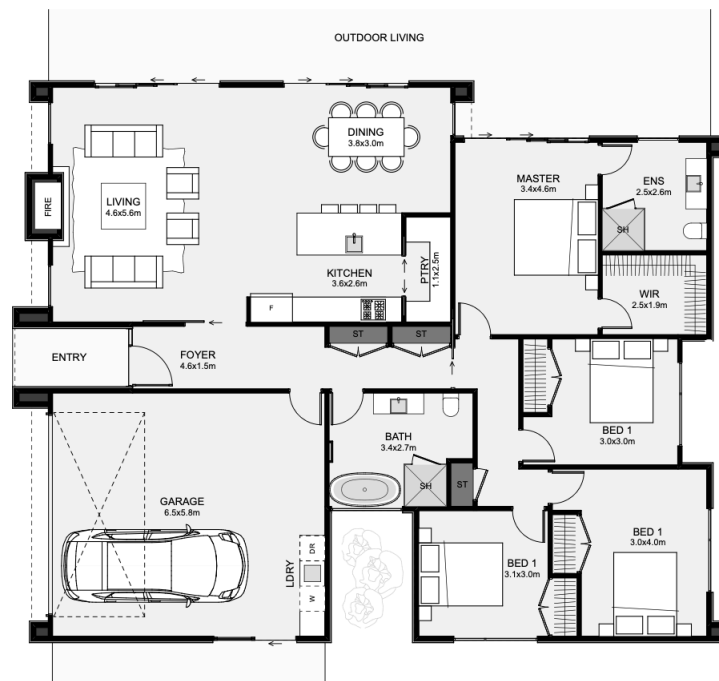
# DARFIELD PLAN

## Lifestyle Collection



\*artist impression

Super modern, sharp lines and a sloping mono-pitch roof, this home cuts through average! Inside, there are four bedrooms, two bathrooms, a large pantry and a built-in fireplace. Metal powder-coated cladding and brick veneer makes for a low-maintenance finish. A nice feature is the bathroom's private garden lookout, where you can install a water feature, maple or palm to take your bath time to the next level!



### Sales Enquiries:

Scott Harris | Design & Sales  
 M: 027 692 8453 E: scott@absolutehomes.co.nz  
[www.absolutehomes.co.nz](http://www.absolutehomes.co.nz)

