



) david  
trubridge

David Trubridge  
PO Box 15 Whakatu  
Hastings 4161, New Zealand

info@davidtrubridge.com  
davidtrubridge.com  
+64 6 650 0204



## Nature is life

Our creations bring nature's beauty  
into our built spaces.

## Delicate footprint

We believe that every day is a footprint in time for which we are accountable.



A large pile of driftwood on a beach under a cloudy sky. The driftwood is weathered and bleached, with some pieces showing dark charred wood. The background features a grassy dune and a hazy horizon.

## Sense of place

Stories from the edge that speak of a wild land and Pacific peoples.



## History

David Trubridge's early work came to prominence in 2001 when the Italian design house Cappellini bought the rights for his recliner Body Raft. The Coral light followed in 2003, establishing a blueprint for kitset products that minimised environmental footprint.



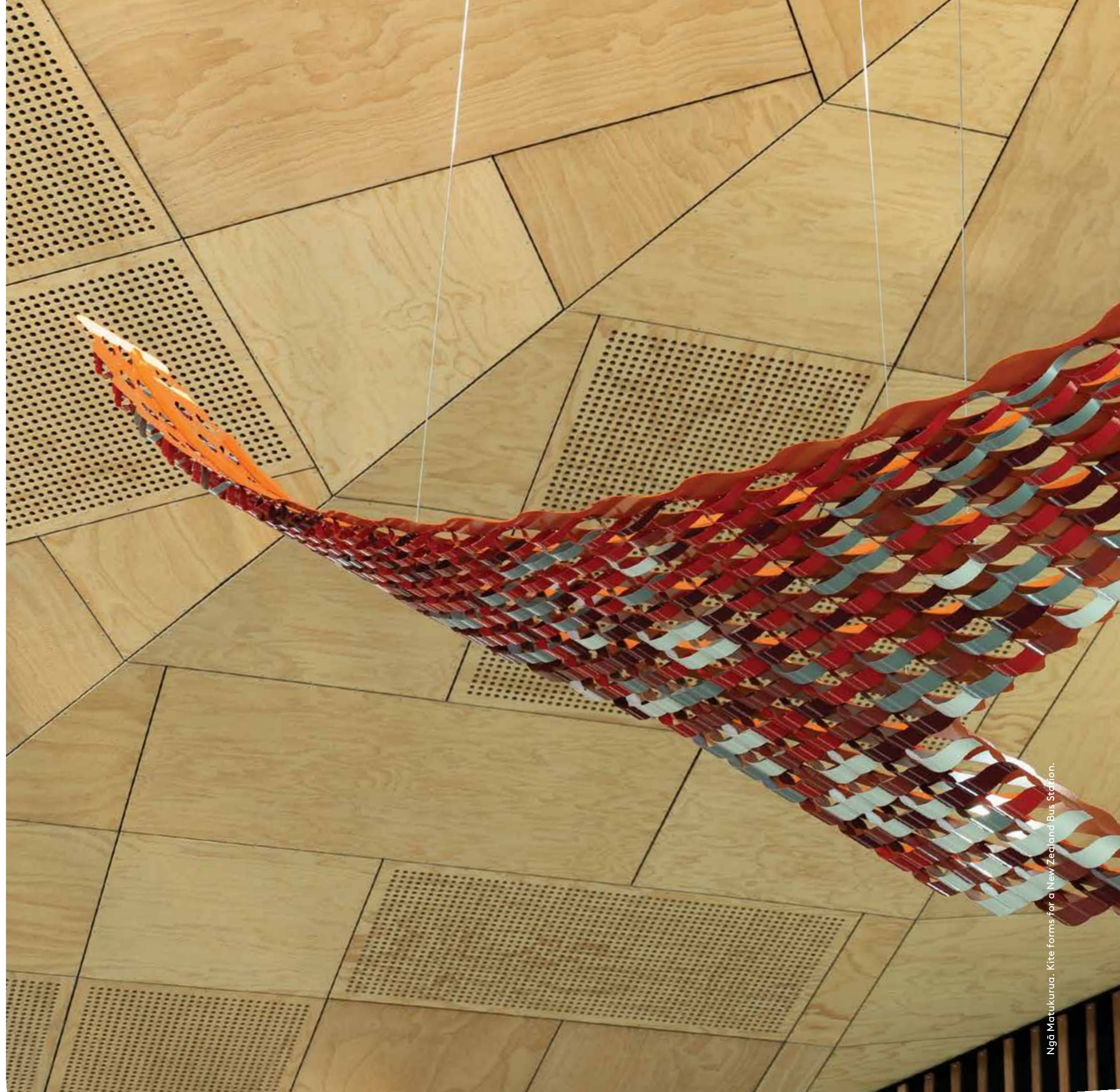
## Workshop

Today, David Trubridge Ltd makes everything in our New Zealand factory – which includes a showroom and design studio. We have a team of skilled designers working on a range of projects: both bespoke for an international client base and for our own production.



## Studio

The company also has a dedicated design facility; DT Studio, which works internationally on commission work, public art and licensed designs for other companies. These projects have taken place all over the world and for varied clients, both large corporations and small businesses.









Hīnaki over the Māretotara Falls, New Zealand.



Nanano, American ash  
Photo — Simon Devitt



## Furniture

The company has grown from a producer of fine furniture to predominantly lighting design and manufacture. However, we still make one-off pieces from our original collection of furniture and can design and manufacture custom pieces to order. Further possibilities exist by designing for other companies to manufacture in their home market.



Waka, for Offecct

## Commissions and projects

We can project manage for, or collaborate with, an existing team. We accommodate any scale from jewellery to giant sculptures. We have worked on a varied range of projects including fabric collections, wall coverings, sustainable outdoor screening, acoustic products and natural homewares.



Rotorua Treewalk Nightlights  
Photo — Gotya Photography

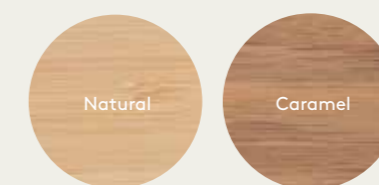


Our lights are sent kitset and we rely on our customers and our stockists to assemble them at location. We call this our Seed System. Helping us to do this dramatically reduces the design's volume during transit which also minimizes the environmental impact of shipping designs from New Zealand. Assembly is easy and fun!

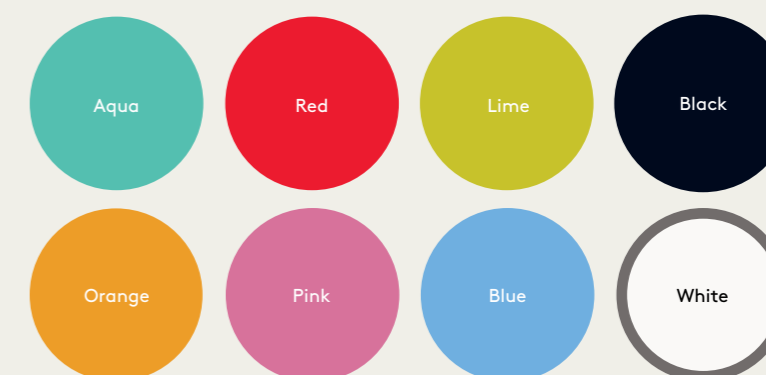
## Finish Options

We offer 13 stock finish options for most of our kitset range. We use low VOC acrylic paint and it is most commonly used on the interior of the light. We can also produce lights in other finishes or colours by special order. All lights are made from sustainably grown bamboo plywood sourced from an FSC accredited factory.

### Raw finish:



### Painted 1 Side:



### Painted 2 Sides:

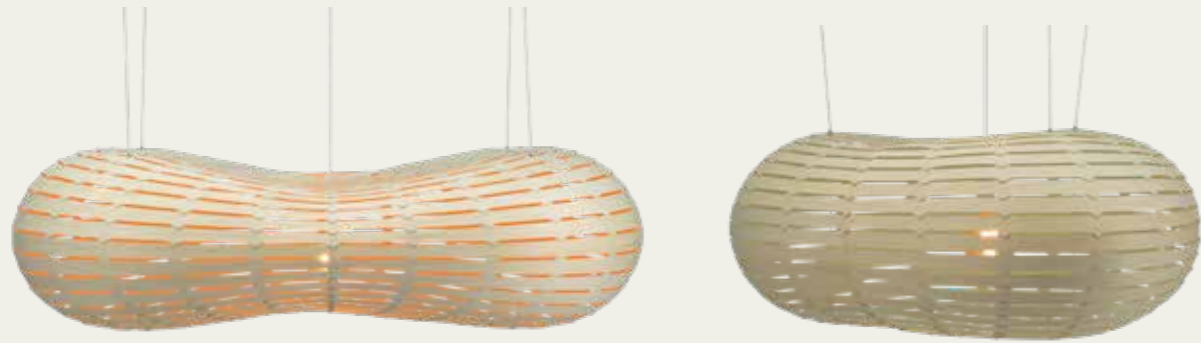
(inside and outside)



# Designs

Our designs are closely linked to patterns found in nature. We make lights of all shapes and sizes to suit any residential or commercial space from a child's bedroom to a multistory hotel foyer. They create ambiance and give a warm, dappled light.





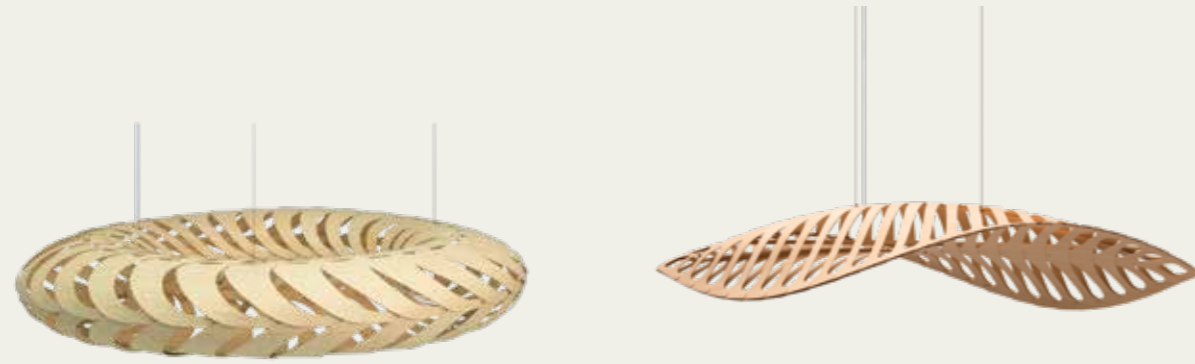
## Clouds

Cloud lights were first launched in 2008 as part of the Spiral Islands installation of matching lights and settees. This was inspired by the clouds that David saw sitting over small islands all over the Pacific Ocean, which were used by Polynesian navigators to find islands from afar.

Length	Width
1250mm (49")	1250mm (49")
1717mm (68")	987mm (39")

### Colour Options





## Maru

The effect of shadow play on surrounding walls and ceiling is Maru's hidden quality. The name Maru is found in both New Zealand Māori and Japanese languages, with references to the cycle of life.

### Diameter

1100mm (43")

1400mm (55")

## Navicula

Navicula is inspired by one of the many microscopic diatoms that float around in the oceans.

### Length

1500mm (60")

2000mm (78")

2500mm (98")

### Width

570mm (22")

900mm (35")

1000mm (39")

### Colour Options



Navicula Small, Bamboo Plywood (Natural).





### Coral

Based on one of the geometric polyhedra that have interested David since he was a boy.

**Diameter**

- 400mm (16")
- 600mm (24")
- 800mm (31")
- 1000mm (39")
- 1200mm (47")
- 1600mm (63")

### Floral

Designed as a softer, more decorative offering alongside Coral which is more structured.

**Diameter**

- 400mm (16")
- 600mm (24")
- 800mm (31")
- 1000mm (39")
- 1200mm (47")
- 1600mm (63")

### Sola

Based on the same geometry as Coral and Floral with more connection points, creating an intensely intricate pattern.

**Diameter**

- 800mm (31")
- 1000mm (39")
- 1350mm (53")

**Finish Options**



Coral lights at Herron Hall.

## Baskets of Light



### Leaf

Leaf is a redesign of one of our Three Baskets of Knowledge range, now called Baskets of Light. There are three design variations all made from thin birch plywood.

Height 1400mm (55")  
Diameter 600mm (24")

### Wave

Wave is a redesign of one of our Three Baskets of Knowledge range, now called Baskets of Light. There are three design variations all made from thin birch plywood.

Height 1400mm (55")  
Diameter 600mm (24")

### Crystal

Crystal is a redesign of one of our Three Baskets of Knowledge range, now called Baskets of Light. There are three design variations all made from thin birch plywood.

Height 1400mm (55")  
Diameter 600mm (24")

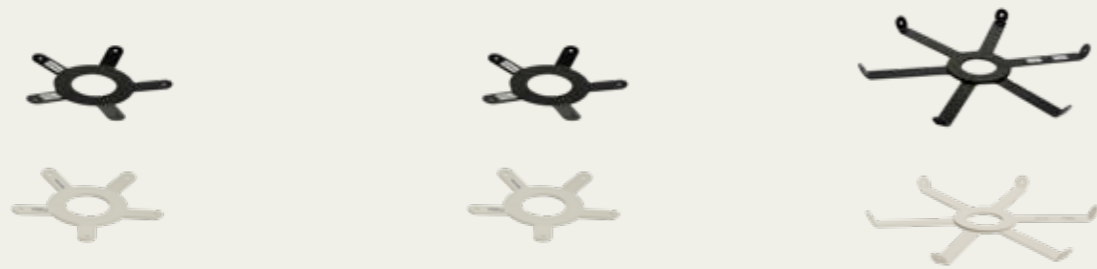
### Finish Options





### Table Lamp Adapter (New)

Choose any finish of our our Kōura 500mm(20"), Coral 400mm(16"), or Floral 400mm(16"). Select your adapter colour and fit to a base (Base not included).



#### Adapter Colour Options



#### Kitset Light Finish Options



Kōura Table Lamp (Black 1 Side).

Designs



**Nikau**

The form of this light is based on the bulb and intersecting leaf forms of a Nīkau palm tree. Red Dot winner.



**Sunflower**

Sunflower is a wall lamp shade to cover/adorn an existing or new wall sconce. It can also be used as a wall sculpture or uplit/downlit.



**Ebbs**

The Ebb family of Swell, Bounce, Roll and Drop are made from Birch plywood. Which can be made easily at home by you!

Diameter	Height	Diameter	Depth	Roll	Swell
405mm (16")	1615mm (64")	600mm (24")	130 mm (5")	750mm (30") H	580mm (23") W
		900mm (36")	180 mm (7")	280mm(11") W	250mm (10") H
				Bounce	Drop
				450mm (18") H	610mm (24") H
				450mm (18") W	340m (14") W

Finish Options



Pola 800mm (31") natural

Designs



**Kōura**

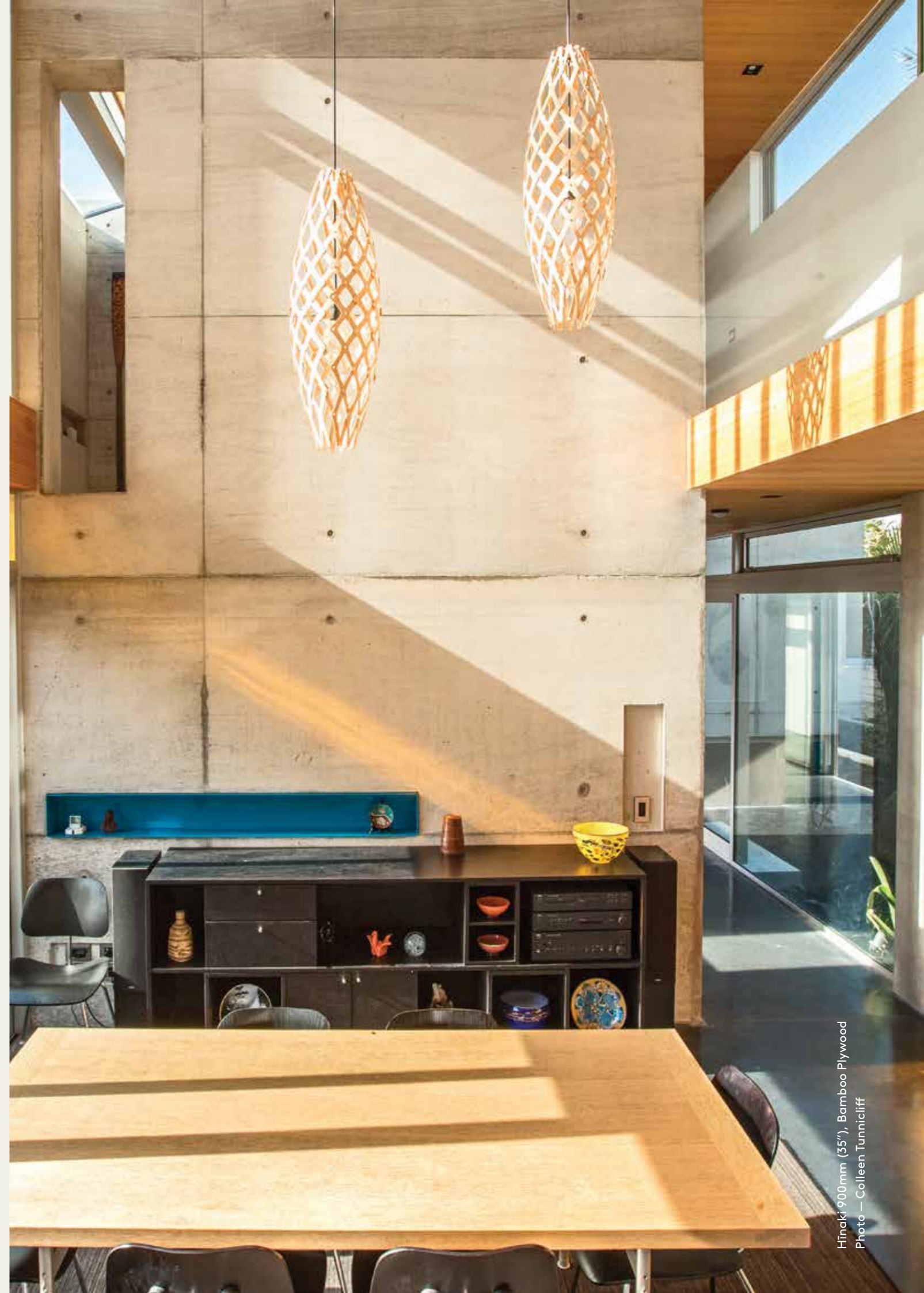
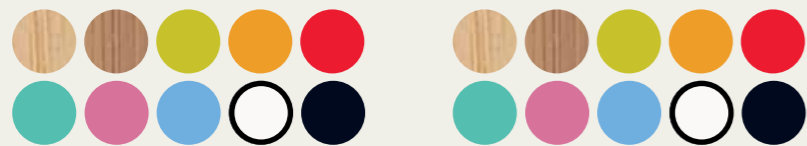
Inspired by woven baskets and also from the curled form of the New Zealand native fresh water shrimp, kōura, which is its Māori name.

**Hīnaki**

Based on fish traps which are called hīnaki by Māori. Hīnaki traps were made from woven vines, some in beautiful forms.

Height	Diameter	Height	Diameter
500mm (20")	300mm (12")	500mm (20")	170mm (7")
750mm (29")	420mm (17")	900mm (35")	320mm (13")
1000mm (39")	550mm (22")	1400mm (55")	500mm (20")
1600mm (63")	950mm (37")		
2000mm (79")	1100mm (43")		
2400mm (94")	1400mm (55")		

Finish Options



Hīnaki 900mm (35"), Bamboo Plywood  
Photo — Colleen Tunnicliff



### Snowflake

Creates a repeating geometric hexagonal pattern based on a snowflake. The light was designed following a trip David made to Antarctica. Red Dot winner.

### Kina

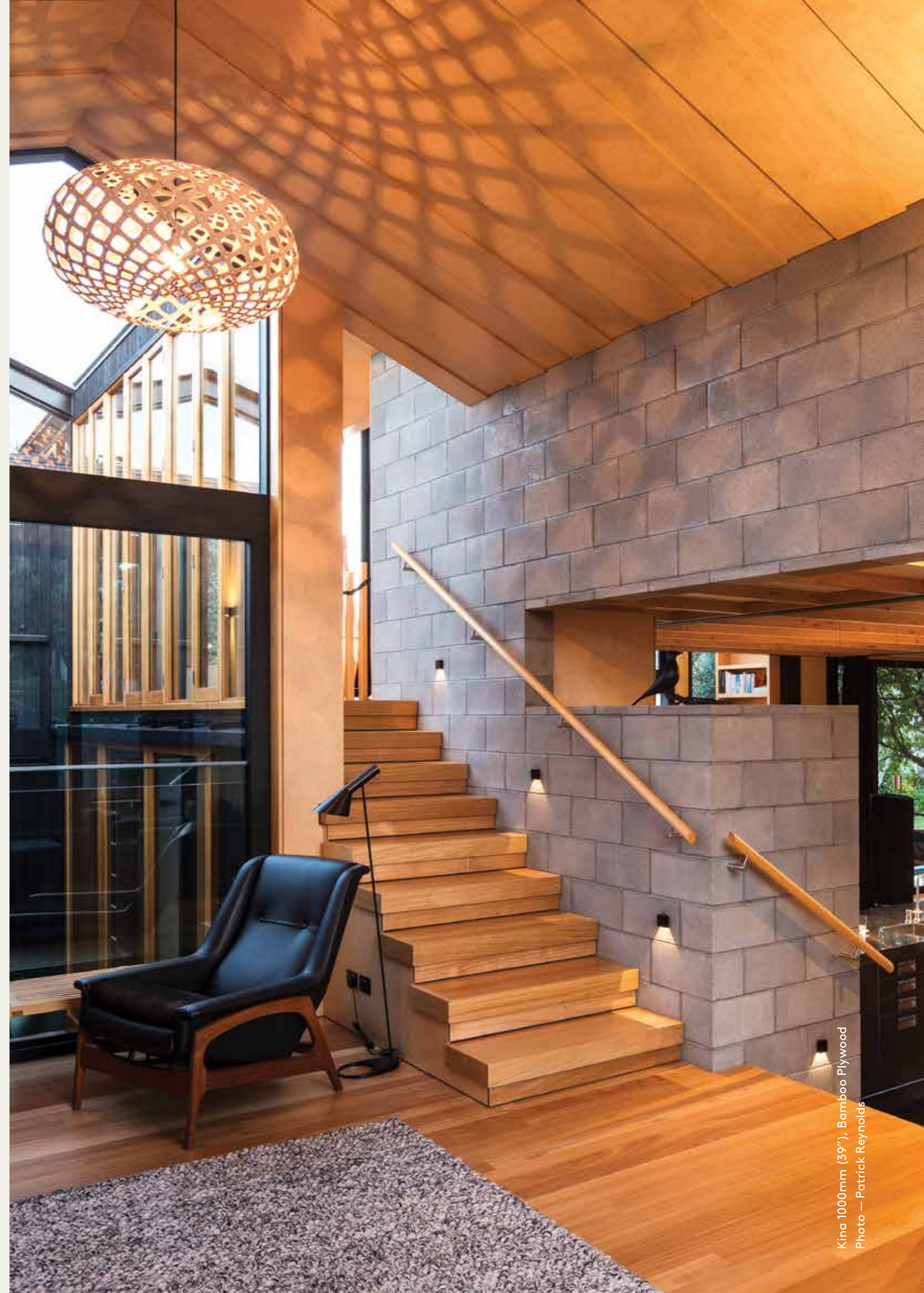
References the inner shell of the local salt water sea-urchin called kina in Māori which is often found washed ashore on New Zealand beaches.

### Flax

Based on the long slender leaves of the indigenous flax plant or harakeke in Māori that has long been grown for its valuable fibre.

Diameter	Height	Diameter	Height	Diameter	Height
800 mm (31")	400mm (16")	440mm (17")	200mm (8")	800mm (31")	220mm (9")
1000 mm (39")	500mm (20")	600mm (24")	280mm (11")	1500mm (59")	325mm (13")
1600 mm (63")	700mm (28")	800mm (31")	370mm (15")		
		1000mm (39")	420mm (17")		
		1400mm (55")	650mm (26")		

#### Finish Options





### Waka

A low upholstered feature bench based on David's early raft forms.

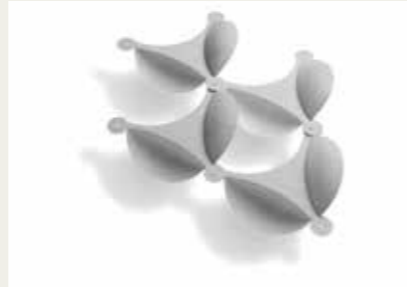
[www.offecct.com](http://www.offecct.com)



### Hush

An acoustic light canopy tested in a sound lab, proven to reduce noise.

[www.iqcommercial.com](http://www.iqcommercial.com)



### Membrane

A modular space divider with acoustic dampening properties. Can be assembled in a number of ways.

[www.offecct.com](http://www.offecct.com)



### Nikau Paling

A selection of nature inspired profiles that create a sophisticated exterior screening system.

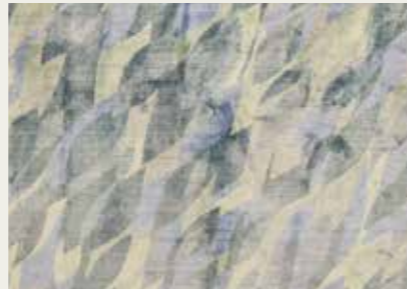
[www.abodo.co.nz](http://www.abodo.co.nz)



### Kina Ottoman

The Japanese company Conde House has used fine craftsmanship to realise an ottoman version of the Kina light.

[www.condehouse.co.jp](http://www.condehouse.co.jp)



### Coverings

Our studio has worked with multiple carpet, rug and wall covering companies around the world. Our ranges are based on our lights and David's nature photography.

[www.dilana.co.nz](http://www.dilana.co.nz)  
[www.bleux.com.au](http://www.bleux.com.au)





David Trubridge  
PO Box 15 Whakatu  
Hastings 4161, New Zealand

info@davidtrubridge.com  
davidtrubridge.com  
+64 6 650 0204

Printed on Tauro offset  
FSC Certified, Chlorine free.

David Trubridge Atlas  
Version 1.2