

A woman with dark hair, wearing a white long-sleeved blouse and a grey skirt, stands in a modern kitchen. She is holding a light blue pot with both hands. The kitchen features white cabinetry, a light wood countertop, and a stainless steel sink with a modern faucet. On the wall behind her is a framed picture of a fish. The overall aesthetic is clean and minimalist.

HÄFELE

The **Designer Range**

PREMIUM DESIGNER PRODUCT RANGE.

THE PERFECT COMBINATION OF THE PRACTICAL AND THE STYLISH.



PREMIUM DESIGNER RANGE.



Häfele believes that the perfect home is about more than just great looks. It is also about creating a space that perfectly combines style with function, and is tailor made to suit you and your lifestyle. This is the Häfele philosophy. Creating individual, inspiring, functional spaces that have a positive impact on the way you live. Together with our Partners, we have the knowledge and expertise to make your home smart, well organised, flexible and future proof. Simply a better place to be.

OUR PREMIUM SUPPLY PARTNERS

KESSEBÖHMER G*GRASS®

BLANCO
GERMANY



ninka®

Hawa^{SWISS}

Hideaway™

Contents

Designer Storage

Kesseböhmer Tandem Pantry.....	2
Kesseböhmer Convoy Lavido.....	4
Kesseböhmer Dispensa 170.....	5
Kesseböhmer Dispensa 300/400.....	6
Kesseböhmer No.15.....	7
Kesseböhmer Comfort.....	9
Kesseböhmer Portero.....	8
Kesseböhmer Dispensa Junior III.....	10
Kesseböhmer Dispensa Junior Slim.....	11
Kesseböhmer iMove.....	12
Häfele Free Space.....	14
GRASS Kinvaro T-Slim.....	16
Kesseböhmer LeMans II Corner.....	18
Ninka Qanto.....	20
Ninka Mondo.....	22

Designer Drawers

GRASS Nova Pro Scala.....	24
GRASS Storage Centre.....	26
GRASS Tavinea Sorto.....	28
GRASS Tavinea Optima.....	31
Kesseböhmer Fineline Mosaic.....	32
Ninka Cusio.....	36
Docking Drawer.....	38
Pop-Up Power.....	40
Point Pod.....	41

Designer Waste Systems

Ninka One2Five.....	44
Hailo Cargo-Syncro.....	45
Hideaway Concelo Waste Bin.....	46
Ninka Bio Bin.....	48

Designer Bathrooms

Häfele Multi-Dimensional Mirror.....	50
Häfele Vanity Mirror.....	52

Designer Laundries

Hideaway Concelo Laundry.....	54
Hailo Laundry.....	56

Designer Sink and Tapware

BLANCO Etagon.....	62
BLANCO Metra.....	64
BLANCO Naya.....	65
BLANCO Subline.....	66
BLANCO Tapware.....	68
Häfele Tapware.....	69

Designer Fittings

Handles.....	72
Smart Cube.....	74
Kesseböhmer YouK Shelving System.....	76
Loox 1152.....	80

Designer Sliding Fittings

Ekü Frontino.....	82
Slido D-Line 42 100-S.....	84
Slido Design-M.....	85
Hawa Concepta.....	86



Designer Storage

HÄFELE

PREMIUM DESIGNER RANGE.



Shelves are easily hung.

Even a fully loaded cabinet moves effortlessly with one hand giving unrivalled visibility.

Cabinet shelf and door shelf are independently adjusted in height.



When opening, the cabinet shelf automatically slides forward.



Available in **more sizes and finishes.**

Refer to:
The Complete Häfele 2020
from page
1.24

Tandem Pantry

A FULL, UNINTERRUPTED VIEW.

The secret to **Tandem's** optimal overview is the use of door storage. Based upon the same design principle as a fridge, **Tandem** makes use of the door for easy access of frequently used items. As the door is opened the shelving inside the pantry glides out on smooth German quality runners, bringing the contents out to meet YOU.

TANDEM PANTRY

No. of trays: 6+6
Internal cabinet height: 1700 mm

Features: Can be used for cabinets with a width between 450, 500 and 600 mm.
Includes SoftStopp Plus damper package.
Tool-free height adjustment of shelves.
German made.
Soft closing action.
Load capacity 70-85 kg.

External cab width mm	No. of trays	Chrome Finish	Anthracite Finish
Min. 450	6 + 6	545.94.612	545.93.431
Min. 500	6 + 6	545.94.632	545.93.433
Min. 600	6 + 6	545.94.652	545.93.435

Convoy Lavidò

THE PREMIUM PANTRY.

Convoy Lavidò isn't attached at the front panel, so once the door is opened - the pantry remains inside of the unit so you can quickly access regularly used items at the front of the shelves. When you need to gain access to the back of the pantry **Lavidò** can be easily extended out so the entire contents of the pantry is drawn towards you from within the cupboard and is displayed in full view from all three sides. There are not many storage solutions that can offer this benefit - it's true time-saving storage!

Convoy Lavidò also does not disappoint with its design ... Available with stunning glass and Chrome or Anthracite shelves, it's sure to make a statement.

CONVOY LAVIDO

Internal cabinet depth: Min. 500 mm

Load capacity: 100 kg

Features: Can be used for cabinets with internal width of 400, 450, 500 or 600 mm.
Includes SoftStopp Pro damper package.
Tool-free height adjustment of shelves.
Heavy-duty capacity bottom runner with synchronisation.
German made.
Soft closing action.

Internal cabinet height mm	To suit cab. width mm	Chrome Finish	Anthracite Finish
2000-2100	400	549.62.513	549.63.513
2100-2200	400	549.62.523	549.63.523
2000-2100	450	549.62.514	549.63.514
2100-2200	450	549.62.524	549.63.524
2000-2100	500	549.62.515	549.63.515
2100-2200	500	549.62.525	549.63.525
2000-2100	600	549.62.516	549.63.516
2100-2200	600	549.62.526	549.63.526



Available in
more sizes
and finishes.

Refer to:
**The Complete
Häfele 2020**
from page
1.8



KESSEBÖHMER
CLEVER STORAGE

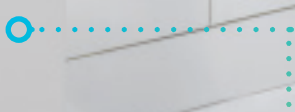


One pull and the entire contents from top to bottom is in **full view from both sides.**



SoftStopp technology ensures a **gentle open and close.**

DISPENSA is a popular solution due to its large **capacity of up to 100kg.**



Easily **change shelving heights** to suit the contents of your cupboard.

Dispensa 170

SLIMLINE PANTRY.

Dispensa has been **Dispensa** pull-outs are unsurpassed when it comes to German quality, smooth action, reliability and durability.

DISPENSA 170

Internal cabinet depth: Min. 500 mm

External cabinet width: min. 170 mm

Tray dimensions: 100 x 465 x 97 mm

Load capacity: 100 kg

- Features:
- Door mounted to pull out frame.
 - Includes SoftStopp Pro damper package.
 - Great use of space for the void created between an opening fridge door and the wall due to its narrow 170mm cabinet requirements.
 - German made.
 - Soft closing action.

Internal cabinet height mm	No. of trays	Chrome Finish	Anthracite Finish
1200-1600	4	546.59.110	546.54.410
1600-2000	5	546.59.120	546.54.420
1900-2300	6	546.59.130	546.54.430



Dispensa 300/400

SLIMLINE PANTRY.

Dispensa has been engineered to make maximum use of the full width and depth of the cabinet and it's easy to change the height of individual trays and baskets to suit the contents of your cupboard for optimal storage capacity. All it takes is a gentle pull for this fitting (and its contents) to glide right out in front of you. It's easy to fetch what you want, or to check the contents and labels at a glance.

Dispensa pull-outs are unsurpassed when it comes to German quality, smooth action, reliability and durability.

DISPENSA 300/400

Internal cabinet depth: Min. 500 mm
 Tray dimensions: 250 x 465 x 97 or 350 x 465 x 97 mm
 Can be used for cabinets with external width of 300 or 400 mm
 Min. internal cabinet depth: 50 mm
 Load capacity: 100 kg

Features: Door mounted to pull out frame.
 Includes SoftStopp Pro damper package.
 German made.
 Soft closing action.

Internal cabinet height mm	No. of trays	External cabinet width mm	Chrome Finish	Anthracite Finish
1200-1600	4	Min. 300	546.51.311	546.45.401
		Min. 400	546.51.313	546.45.403
1600-2000	5	Min. 300	546.51.321	546.45.411
		Min. 400	546.51.323	546.45.413
1900-2300	6	Min. 300	546.51.331	546.45.431
		Min. 400	546.51.333	546.45.433



One pull and the entire contents from top to bottom is in **full view from both sides.**

SoftStopp technology ensures a **gentle open and close.**

DISPENSA is a popular solution due to its large **capacity of up to 100kg.**

Easily **change shelving heights** to suit the contents of your cupboard.

No. 15 is a popular solution for spices, baking trays, cleaning products and items that need to be near-by when cooking.



Easily **change shelving heights** to suit the contents of your cupboard.

The fitting makes the **most efficient use of space compared to pull out drawers** thanks to not having sides.

Available in **more sizes and finishes.**

Refer to:
The Complete Häfele 2020
from page
1.38

No.15

CONVENIENCE STORAGE.

In a lot of kitchens, valuable storage space goes unused. Turn these spaces into useful extra storage, with one of Kesseböhmer's **No.15** base unit pull-outs which are just 15cm wide. Installed beside the cooker, a **No.15** would be an ideal place to store herbs and spices or other cooking essentials. Unlike other slim storage solutions - **No.15** makes full use of the entire width and depth of the cabinet space for optimal storage.

NO.15

Internal cabinet depth: Min. 481 mm
Internal cabinet width: Min. 112 mm
Tray dimensions: 465 x 104 x 37 DxDxH mm
Load capacity: 12 kg (6kg/shelf)

Features: Concealed mounted runner allows maximum use of storage space (runner is mounted on right hand side of cab).
German made.
Soft closing action.

Version	No. of trays	Internal cabinet height mm	Chrome Finish	Anthracite Finish
2-Tier	2	Min. 540	549.24.320	549.24.620
Towel Rail	1	Min. 590	549.24.333	549.24.633
Baking Tray	1	Min. 590	549.24.343	549.24.643

Portero

INTEGRATED SERVICE STATION.

All your cleaning products in one portable pull-out. Kesseböhmer's **Portero** is an integrated service station that can be lifted out with one hand - for perfectly organised cleaning. Simply slide the fitting out, lift and go! The removable plastic trays are high quality and dishwasher safe.

Internal cabinet depth: Min. 480 mm

- Features:
- Organises the storage space in the under sink unit.
 - Easy attachment to cabinet base - easily retrofitted.
 - Removable basket
 - Acid-resistant and dishwasher-safe plastic trays
 - German made



PORTERO SET 1

External cabinet width mm	Finish	Cat. No.
Min. 200	White	545.48.760
	Anthracite	545.48.360

Internal cabinet height min. 400 mm



PORTERO SET 2

External cabinet width mm	Finish	Cat. No.
Min. 320	White	545.48.761
	Anthracite	545.48.361

Internal cabinet height min. 400 mm



PORTERO SET 3

External cabinet width mm	Finish	Cat. No.
Min. 320	White	545.48.762
	Anthracite	545.48.362

Internal cabinet height min. 511 mm



Lift-out service station.

Dishwasher safe components.



Easily **change shelving heights** to suit the contents of your cupboard.

Comfort is mounted to the cabinet side, so the **running system is not visible from the bottom.**

More accessories available.

Refer to:
The Complete Häfele 2020
from page
1.34

The fitting makes the **most efficient use of space compared to pull out drawers** thanks to not having sides.

Comfort

KEEP EVERYTHING ON-HAND.

The compact 30-cm base unit pull-out lets you fill every centimetre and customise the pull-out to suit your individual requirements. **Comfort II** is ideal for storing cooking ingredients; it provides an amazing amount of storage space, plus a clear view of all the contents. The pull-out glides softly and smoothly out in front of the cabinet. Everything needed for a great meal is instantly ready at hand.

COMFORT II

440 mm extension length

Mounting: Screw fixing to base and front panel

Features: Concealed runners and front brackets.
Great against a wall or beside a blind corner unit where access from one side is desirable.
Full extension with perfect running characteristics and high lateral stability.
SopftStopp damping system.
Height adjustable baskets and trays.
German made
Load capacity 20 kg

Internal cabinet height mm	Version	No. of trays	External cabinet width mm	Chrome Finish	Anthracite Finish
Min. 590	Right	2	230	545.53.660	545.53.460
			300	545.53.662	545.53.464
			400	545.53.664	545.53.468
	Left	2	230	545.53.661	545.53.461
			300	545.53.663	545.53.465
				545.53.665	545.53.469

More sizes and accessories available.



Dispensa Junior III

KEEP EVERYTHING ON-HAND.

Developed specifically as a slim storage unit, millions of **Dispensa's** have been installed around the world. All it takes is a gentle pull for this fitting (and its contents) to glide right out in front of you. It's easy to fetch what you want, or to check the contents and labels at a glance. **Dispensa** has been engineered to make maximum use of the full width and depth of the cabinet and it's easy to change the height of individual trays and baskets to suit the contents of your cupboard for optimal storage capacity. In its third generation the pull-out system for base units proves itself more than ever before a mature and versatile member of the **Dispensa** product family.

DISPENSA JUNIOR III

For internal cabinet depth 496 mm

For internal cabinet height min. 600 mm

Mounting: Attaches to cabinet base

- Features:
- Concealed runners and front brackets.
 - Full extension with perfect running characteristics and high lateral stability.
 - Great for in the centre of the kitchen where access from both sides is desirable.
 - SoftStopp damping system.
 - Height adjustable baskets and trays.
 - Easy to access the contents from both sides.
 - German made
 - Load capacity 24 kg

External cabinet width mm	Tray dimensions mm	Chrome Finish	Anthracite Finish
Min. 300	250 x 465 x 97	545.11.212	545.11.452
Min. 400	350 x 465 x 97	545.11.213	545.11.453
Min. 450	400 x 465 x 97	545.11.614	545.11.484



Easily **change shelving heights** to suit the contents of your cupboard.

Pull-out fittings allow a clear of the entire cupboard at once.

Dispensa Junior is bottom mounted with a visible runner.



Easily **change shelving heights** to suit the contents of your cupboard.

More accessories available.

Refer to:
The Complete Häfele 2020
from page
1.36



Dispensa Junior Slim

THE PRACTICAL MINI PANTRY.

The compact 30-cm base unit pull-out lets you fill every centimetre and customise the pull-out to suit your individual requirements. **Comfort II** is ideal for storing cooking ingredients; it provides an amazing amount of storage space, plus a clear view of all the contents. The pull-out glides softly and smoothly out in front of the cabinet. Everything needed for a great meal is instantly ready at hand.

DISPENSA JUNIOR SLIM

For internal cabinet depth 496 mm

For internal cabinet height min. 640-728 mm

Mounting: Attaches to cabinet base

Features: Concealed runners and front brackets.
Full extension with perfect running characteristics and high lateral stability.
SopftStopp damping system.
Height adjustable baskets and trays.
German made
Load capacity 20 kg

Frame set with runners

To suit cabinet width mm	Chrome Finish	Anthracite Finish
200-400	546.19.600	545.19.300

Front fixing set

To suit cabinet width mm	White Finish	Anthracite Finish
150	545.19.680	545.19.380

Trays/Shelves

To suit cabinet width mm	Tray dimensions mm	Chrome Finish	Anthracite Finish
150	100 x 465 x 94	546.75.340	545.89.590
300	250 x 465 x 94	546.75.253	546.75.453
400	350 x 465 x 94	546.75.254	546.75.459



iMove

PULL-DOWN STORAGE.

In many kitchens the top shelf of overhead cupboards isn't easily accessible, often requiring a step-ladder which is less than ideal. This is an issue no longer thanks to **iMove**. Kesseböhmer's **iMove** can be operated with one hand and floats the contents of your top shelf down into easy reach. Even when fully loaded with up to 8kg, movement is effortless thanks to its spring-force technology.

IMOVE

Features: Effortless operation with a smooth and steady action
 Everything in easy reach.
 Load capacity: 8 kg
 For external cabinet widths: 600 or 900 mm
 Available in White, Anthracite and Silver
 German made

Finish	Version	External cabinet width 600 mm	External cabinet width 900 mm
Anthracite	Single Tray	504.68.313	504.68.315
Anthracite	Double Tray	504.68.323	-
White	Single Tray	504.68.617	504.68.619
White	Double Tray	504.68.623	-
Silver	Single Tray	504.68.913	504.68.915
Silver	Double Tray	504.68.923	-

Ideally this product should be used with a compact Häfele FREE flap fitting to lift cupboard door (as pictured).



Available in **Anthracite**
or **Silver** finishes.

Available in
more sizes
and finishes.

Refer to:
**The Complete
Häfele 2020**
from page
1.64



KESSEBÖHMER
CLEVER STORAGE

8kg load capacity.

Available in
single tray
or double tray.



Free Space

THE COMPACT FLAP FITTING.

Free Space is a hingeless, upward-opening flap fitting of a compact construction that only requires a very shallow installation depth of 63 mm. This makes it suitable for use even with very shallow cupboards. Despite its small size, it can securely support heavy flap weights.

Scan this QR code with your phone camera to view Free Space in action.



Free Space 1.11

For one piece flaps - Standard application with a handle.
 For standard stay flap application with front height up to 650 mm.
Opening angle 90 or 107°



MODEL	WHITE	LIGHT GREY	ANTHRACITE
B	372.27.700	372.27.500	372.27.350
C	372.27.701	372.27.501	372.27.351
D	372.27.702	372.27.502	372.27.352
E	372.27.703	372.27.503	372.27.353
F	372.27.704	372.27.504	372.27.354

CABINET HEIGHT	B	C	D	E	F
FLAP WEIGHT KG					
225mm	2.3 - 4.3	3.8 - 7.1	6.4 - 9.3	9.2 - 13.4	13.4 - 19.1
250mm	1.9 - 3.9	3.4 - 6.4	5.8 - 9.1	8.3 - 12.6	12.1 - 17.2
275mm	1.9 - 3.5	3.1 - 5.8	5.3 - 8.2	7.5 - 12.0	11.0 - 15.6
300mm	1.7 - 3.2	2.8 - 5.3	4.8 - 7.5	6.9 - 11.0	10.1 - 14.3
325mm	1.6 - 3.0	2.6 - 4.9	4.4 - 7.0	6.4 - 10.2	9.3 - 13.2
350mm	1.5 - 2.8	2.4 - 4.6	4.1 - 6.5	5.9 - 9.5	8.6 - 12.3
375mm	1.3 - 2.6	2.2 - 4.3	3.8 - 6.0	5.5 - 8.8	8.1 - 11.4
400mm	1.2 - 2.4	2.1 - 4.0	3.6 - 5.6	5.2 - 8.3	7.6 - 10.7
425mm	1.1 - 2.3	2.0 - 3.8	3.4 - 5.3	4.9 - 7.8	7.1 - 10.1
450mm	1.0 - 2.1	1.9 - 3.5	3.2 - 5.0	4.6 - 7.3	6.7 - 9.5
475mm	1.0 - 2.0	1.8 - 3.4	3.0 - 4.7	4.3 - 7.0	6.4 - 9.0
500mm	0.9 - 1.9	1.7 - 3.2	2.9 - 4.5	4.1 - 6.6	6.0 - 8.6
525mm	0.9 - 1.8	1.6 - 3.0	2.7 - 4.3	3.9 - 6.3	5.7 - 8.2
550mm	0.8 - 1.7	1.5 - 2.9	2.6 - 4.1	3.7 - 6.0	5.5 - 7.8
575mm	0.8 - 1.7	1.4 - 2.8	2.5 - 3.9	3.6 - 5.7	5.2 - 7.4
600mm	0.8 - 1.6	1.4 - 2.7	2.4 - 3.7	3.4 - 5.5	5.0 - 7.1
625mm	0.7 - 1.5	1.3 - 2.5	2.3 - 3.6	3.3 - 5.3	4.8 - 6.8
650mm	0.7 - 1.5	1.3 - 2.4	2.3 - 3.5	3.2 - 5.1	4.6 - 6.6

Free Space 1.8

For push open - Handle free one piece flaps.
 For standard stay flap application with front height up to 650 mm.
Opening angle 90 or 107°



MODEL	WHITE	LIGHT GREY	ANTHRACITE
B	372.27.705	372.27.505	372.27.355
C	372.27.706	372.27.506	372.27.356
D	372.27.707	372.27.507	372.27.357
E	372.27.708	372.27.508	372.27.358

CABINET HEIGHT	B	C	D	E
FLAP WEIGHT KG				
225mm	2.3 - 4.3	3.8 - 7.1	6.4 - 9.3	9.2 - 13.4
250mm	1.9 - 3.9	3.4 - 6.4	5.8 - 9.1	8.3 - 12.6
275mm	1.9 - 3.5	3.1 - 5.8	5.3 - 8.2	7.5 - 12.0
300mm	1.7 - 3.2	2.8 - 5.3	4.8 - 7.5	6.9 - 11.0
325mm	1.6 - 3.0	2.6 - 4.9	4.4 - 7.0	6.4 - 10.2
350mm	1.5 - 2.8	2.4 - 4.6	4.1 - 6.5	5.9 - 9.5
375mm	1.3 - 2.6	2.2 - 4.3	3.8 - 6.0	5.5 - 8.8
400mm	1.2 - 2.4	2.1 - 4.0	3.6 - 5.6	5.2 - 8.3
425mm	1.1 - 2.3	2.0 - 3.8	3.4 - 5.3	4.9 - 7.8
450mm	1.0 - 2.1	1.9 - 3.5	3.2 - 5.0	4.6 - 7.3
475mm	1.0 - 2.0	1.8 - 3.4	3.0 - 4.7	4.3 - 7.0
500mm	0.9 - 1.9	1.7 - 3.2	2.9 - 4.5	4.1 - 6.6
525mm	0.9 - 1.8	1.6 - 3.0	2.7 - 4.3	3.9 - 6.3
550mm	0.8 - 1.7	1.5 - 2.9	2.6 - 4.1	3.7 - 6.0
575mm	0.8 - 1.7	1.4 - 2.8	2.5 - 3.9	3.6 - 5.7
600mm	0.8 - 1.6	1.4 - 2.7	2.4 - 3.7	3.4 - 5.5
625mm	0.7 - 1.5	1.3 - 2.5	2.3 - 3.6	3.3 - 5.3
650mm	0.7 - 1.5	1.3 - 2.4	2.2 - 3.5	3.2 - 5.1



Kinvaro T-Slim

THE SLIMLINE SOLUTION FOR ONE-PIECE TIMBER FLAPS.

Kinvaro T-Slim from **GRASS** is a concealed flap fitting which requires minimal opening forces and stops at any position. **T-Slim** features an extremely slim design with functional components that can be integrated into cabinet walls. The result is a wall cabinet with invisible technology and maximum space.

CONCEALED
FLAP FITTING
FOR WALL
CABINETS

Wide fronts are as popular as ever. Their advantages are particularly obvious in wall cabinets. Wide fronts avoid gaps - and when wide fronts are opened, much more storage space is revealed. There is no question that **Kinvaro T-Slim** also offers an intelligent solution for wide fronts. An additional flap fitting is simply added for cabinet widths of more than 1,200 mm. This creates a powerful trio that increases the load capacity by 50 percent



KINVARO T-SLIM FLAP FITTINGS

For standard stay flap application with front height up to 550 mm.
Opening angle 107° or 75°



FLAP HEIGHT	POWER FACTOR (LF)	
	500 - 1100	1000 - 2250
200mm	2.5 - 5.5	5.0 - 11.3
250mm	2.0 - 4.4	4.0 - 9.0
300mm	1.7 - 3.7	3.3 - 7.5
350mm	1.4 - 3.1	2.9 - 6.4
400mm	1.3 - 2.8	2.5 - 5.6
450mm	1.1 - 2.4	2.2 - 5.0
500mm	1.0 - 2.2	2.0 - 4.5
550mm	0.9 - 2.0	1.8 - 4.1

Sample measurements table for selecting the right model based on cabinet height and flap weight including handle.

MODEL

Complete set with integrated soft-close dampener

Push-to-open with integrated Tipmatic Plus

POWER FACTOR (LF)

500 - 1100
1000 - 2250

500 - 1100
1000 - 2250

ICE

372.45.812
372.45.822

372.45.817
372.45.827



Available in
more sizes
and finishes.

Refer to:
**The Complete
Häfele 2020**
from page
1.54



LeMans II Corner

MAXIMUM USE OF CORNER SPACE.

The signature shape of the LeMans trays is the secret to its high capacity corner storage. Just like the famous Le Mans race track - this fitting uses its carefully thought-out curves to bring the contents of your corner out to meet you for ultimate ease of access. Hardly any effort is required to make the shelves emerge from the cupboard so that you can constantly keep track of what is where and access everything with perfect ease. In a nutshell, **LeMans** is in pole position for efficiency and convenience.

LEMANS CORNER

Features: Trays extend completely out of the unit. Trays operate independently of one another.
Anti-slip tray base and high quality finish.
For corner units with 450, 500 and 600 mm doors.
Height adjustable trays.
Load capacity: 50 kg (25 kg per shelf)
German made

Internal cabinet height mm	No. of trays/ version	Door width mm	Chrome Finish	Anthracite Finish
600-750	2/right swivel	450	541.32.620	541.31.870
		500	541.32.622	541.31.872
		600	541.32.624	541.31.878
	2/left swivel	450	541.32.621	541.31.871
		500	541.32.623	541.31.873
		600	541.32.625	541.31.879
720-900	2/right swivel	450	541.32.626	541.31.874
		500	541.32.628	541.31.876
		600	541.32.630	541.31.884
	2/left swivel	450	541.32.627	541.31.875
		500	541.32.629	541.31.877
		600	541.32.631	541.31.885

Ninka Qanto

THE AUTOMATED CORNER STORAGE SOLUTION.

Ninka's Qanto provides two or three vertically rising trays for maximum space usage. Suitable for an array of items, store your small electrical appliances, pots and pans, or even a hidden bar. **With the simple push of a button it comes into view or is hidden from sight.**

Scan this QR code with your phone camera to view the Qanto in action.



 Scan me.

NOW WITH
INTEGRATED
BENCHTOP





NINKA QANTO

Dimensions (WxD): 598 x 598 mm
 Cabinet height closed: 745 mm
 Cabinet height open: 1245 mm
 Complete, pre-assembled unit
 Plinth height: 70-300 mm (cut to size)
 For top thickness from 12-40 mm

Weight loading: 10 kg (centre shelf),
 15 kg (bottom shelf)

Version

A. 2 Shelf	542.73.460
B. 3 Shelf	542.73.461



Mondo Corner

REVOLVING CORNER.

The **Mondo** from Ninka is a space-efficient unit that looks small but can fit bigger items like mixers and large electric woks. Because the shelves rotate out to you it's easy to pick them up and lift to the counter.

Version	Side height mm	Finish	Cat. No.
800 x 800 mm	720	Grey	542.24.503
900 x 900 mm	720	White	542.24.513
900 x 900 mm	720	Grey	542.24.813
900 x 900 mm	750	Grey	542.23.218





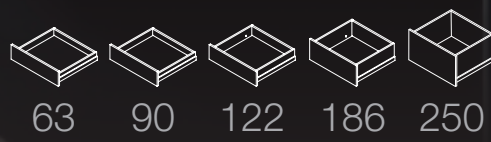
Designer Drawers

HAFELE

PREMIUM DESIGNER RANGE.

Nova Pro Scala

UNITY OF FORM AND FUNCTION.



Clear design principles and perfect unity of form and function, makes GRASS Nova Pro Scala from Grass the perfect drawer solution. The puristic design with its striking lines, right angles and small radii gives the double-wall metal drawer sides a timeless, technical and functional look. The special character of GRASS Nova Pro is hallmarked by its perfection down to the last detail and the modular system concept. From the precision craftsmanship of every part as well as the colour and surface finishes, everything is focused on perfect function, top quality and lasting value.



Refer to:
**The Complete
 Häfele 2020**
 from page
7.4

The conventional wooden drawer is basically a four-sided box with a front panel. Strictly speaking, we are adopting a back-to-basics approach in offering a 250 or 186 mm drawer side for a high drawer with GRASS **Nova Pro Scala** alongside the 63 mm, 90 mm and 122 mm versions. The new drawer side is high, enclosed and aesthetic.



Storage Centre

WITH GRASS NOVA PRO SCALA.

All of the smooth running, soft closing and luxurious qualities of GRASS **Nova Pro Scala** - now available as one article number with everything you need, including zero protrusion hinges.



NOVA PRO SCALA PANTRY SOLID SIDE DRAWERS

1 x 90 H | 4 x 186H with 40kg runners + internal fronts

Cab. width mm	Ice	Silver	Stone
600mm for 16mm sides	551.99.105	551.99.205	551.99.005
1200mm variable width	551.99.115	551.99.215	551.99.015

NOVA PRO SCALA PANTRY CRYSTAL PLUS GLASS

1 x 90 H | 4 x Crystal Plus drawers with 40kg runners + internal fronts

Cab. width mm	Ice	Silver	Stone
600mm for 16mm sides	551.97.765	551.97.965	551.97.565
1200mm variable width	551.94.799	551.94.999	551.94.599

NOVA PRO SCALA 90H

Individual drawers with 40 kg runners + internal fronts

Cab. width mm	Ice	Silver	Stone
600mm for 16mm sides	551.99.125	551.99.225	551.99.025
1200mm variable width	551.99.135	551.99.235	551.99.035

NOVA PRO SCALA 186H

Individual drawers with 40 kg runners + internal fronts

Cab. width mm	Ice	Silver	Stone
600mm for 16mm sides	551.96.125	551.96.225	551.96.025
1200mm variable width	551.96.135	551.96.235	551.96.035

NOVA PRO SCALA CRYSTAL PLUS SMOKED GLASS

Individual drawers with 40 kg runners + internal fronts

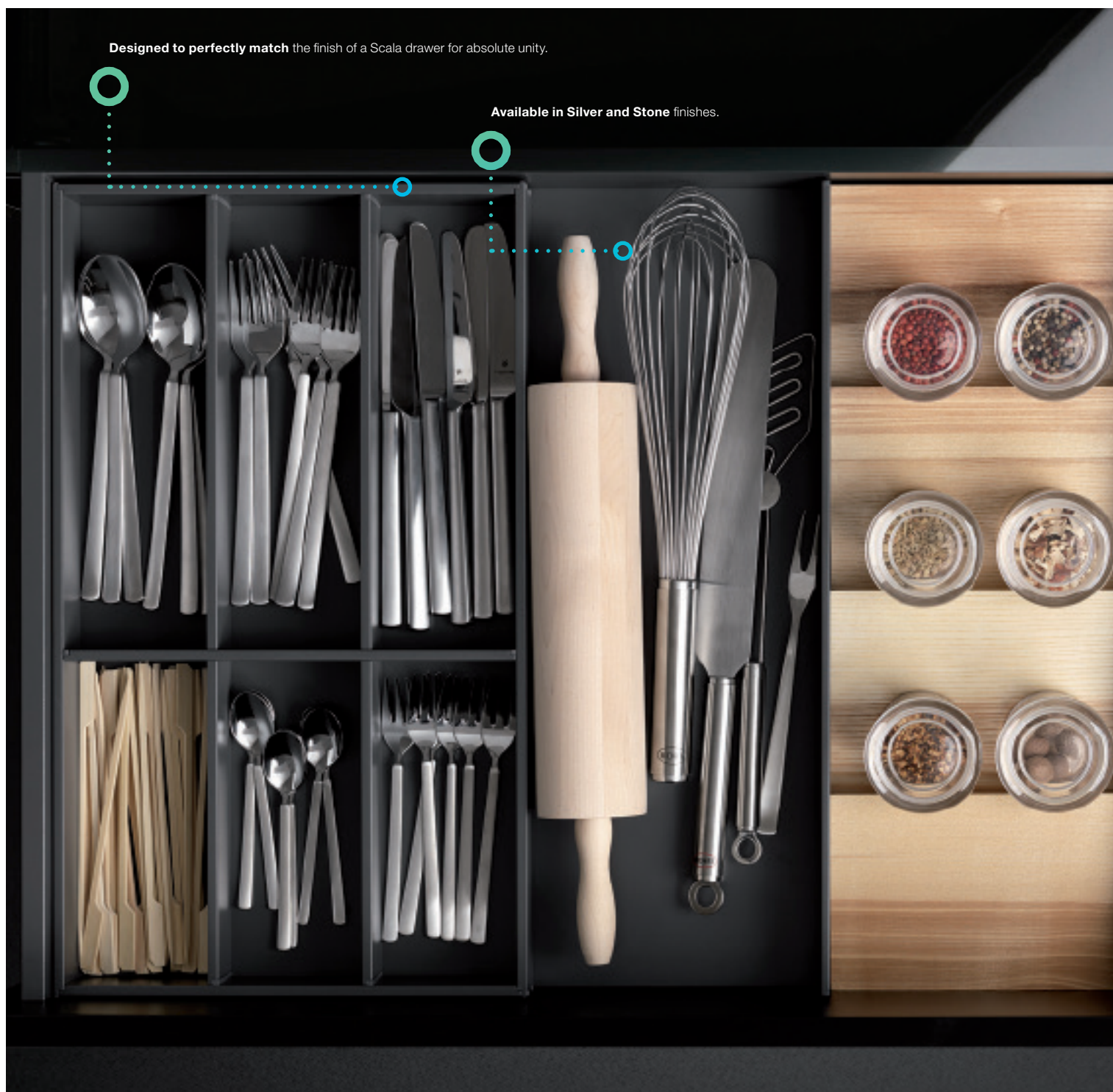
Cab. width mm	Ice	Silver	Stone
600mm for 16mm sides	551.97.775	551.97.975	551.97.575
1200mm variable width	551.98.755	551.98.955	551.98.555

Tavinea Sorto


COHESIVE EUROPEAN MADE INSERTS.

Designed to perfectly match the finish of a Scala drawer for absolute unity.


Available in Silver and Stone finishes.



Whether using one, two or three elements – with the frame system it is possible to fit out drawers of any width quickly and easily. The innovative corner connection of the frames ensures firm attachment to the bottom panel and scratch-free positioning at the side walls and elements. **Tone-on-tone:** The powder-coated frame system matches SCALA drawer sides in form and colour. **Can be combined:** Together with the knife block, the stepped spice rack and foil holder, **Tavinea Sorto** from GRASS creates perfect organisation in the drawer. **Durable:** The robust and scratch-resistant surface gives the steel frames a durable, attractive finish.



European made.



Flexible organisation that can be easily arranged and rearranged.

Tavinea Sorto

COHESIVE EUROPEAN MADE INSERTS.



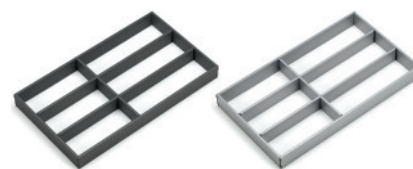
**TAVINEA SORTO
UTENSIL DIVIDER**

Width: 186 mm
 Stone Silver
 For drawer depth 500mm **557.90.525** **557.90.925**



**TAVINEA SORTO LARGE
UTENSIL DIVIDER**

Width: 186 mm
 Stone Silver
 For drawer depth 550mm **557.90.527** **557.90.927**



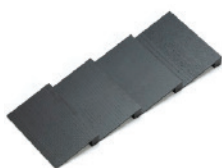
**TAVINEA SORTO 6
COMPARTMENT DIVIDER**

Width: 276 mm
 Stone Silver
 For drawer depth 500mm **557.90.526** **557.90.926**



**TAVINEA SORTO 7
COMPARTMENT DIVIDER**

Width: 276 mm
 Stone Silver
 For drawer depth 550mm **557.90.528** **557.90.928**



TAVINEA SORTO SPICE RACK

Width: 186 mm
 *Dark ash shown
 Light Ash Dark Ash
 For drawer depth 500mm **557.90.695** **557.90.895**
 For drawer depth 550mm **557.91.691** **557.91.891**



TAVINEA SORTO ROLL HOLDER

Width: 186 mm
 *Dark ash shown
 Light Ash Dark Ash
 For drawer depth 500mm **557.91.605** **557.91.805**
 For drawer depth 550mm **557.91.695** **557.91.895**



TAVINEA SORTO KNIFE BLOCK

Width: 186 mm
 *Dark ash shown
 Light Ash Dark Ash
 For drawer depth 500mm **557.90.685** **557.90.885**
 For drawer depth 550mm **557.91.693** **557.91.893**



TAVINEA SORTO DIVIDING RAIL

Stone Silver
 Drawer depth 500 mm **557.90.545** **557.90.945**
 Drawer depth 550 mm **557.90.546** **557.90.946**



DESIGNER ANTISLIP MAT Length: 10 m

Width mm Black Umber Grey Umber Grey
 500 **547.92.389** **547.92.589** **547.92.489**
 550 **547.92.388** **547.92.588** **547.92.488**

B

Designed to perfectly match the finish of a Scala drawer for absolute unity.

A

Flexible organisation that can be easily arranged and rearranged.

C

Tavinea Optima

POT DRAWER PERFECTION.

With **Tavinea Optima** from GRASS small and large stored items remain securely in place. The flexibly useable elements divide the space in drawers to the personal preferences of the user. The dividers in the drawer with the continuously adjustable aluminium profiles can be adjusted at any time - tool free and also after the initial fit.

A

OPTIMA DIVIDER PROFILE

Length 1098mm (For 1200mm cabinet)
Profile length = Internal cabinet width less 70mm

Silver	551.87.970
Stone	551.87.570

B

OPTIMA END CAP

(Two end caps required for each Optima drawer divider)

Silver	551.87.990
Stone	551.87.590

C

OPTIMA SMART BOARD

To suit drawer depth 500mm

Silver	551.87.980
Stone	551.87.580

Fineline Mosaiq


HAND-CRAFTED FINE TIMBER INSERTS.

Hand-crafted from fine timber.



Individual organisation that can be arranged in many different ways.

Made with a material mix of warm timber and fine metal, the range creates a contemporary high-end look. **Fineline Mosaiq** organisers can be arranged to suit your individual needs, so each set is tailored to you. **Fineline** can be arranged in minutes and re-arranged over time as your needs change and families grow. With finishes available in American Oak and European Ash - there is a finish to compliment any kitchen palette, or create a striking contrast.



Available in two finishes:
American Oak and European Ash.

German made premium quality.

Fineline Mosaic

PRE-MADE SETS. ORDER SEPARATELY FOR A CUSTOM DRAWER SOLUTION.

450 MM



B

450 MM



C

600 MM



F

800 MM



G

800 MM



H

900 MM



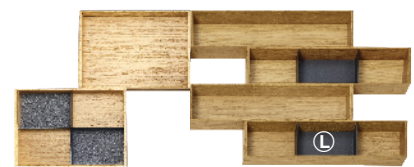
I

900 MM



K

1000 MM



L

1000 MM



M

1200 MM

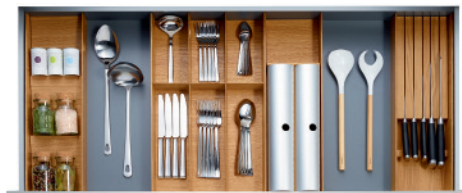


N

1200 MM



O



FOR 450MM DRAWER B Ash Black **556.05.301** Oak Natural **556.05.401** **C** Ash Black **556.05.302** Oak Natural **556.05.402**

FOR 600MM DRAWER F Ash Black **556.05.303** Oak Natural **556.05.403** | **FOR 800MM DRAWER G** Ash Black **556.05.304** Oak Natural **556.05.404** **H** Ash Black **556.05.305** Oak Natural **556.05.405** | **FOR 900MM DRAWER I** Ash Black **556.05.306** Oak Natural **556.05.406** **K** Ash Black **556.05.308** Oak Natural **556.05.408** | **FOR 1000MM DRAWER L** Ash Black **556.05.309** Oak Natural **556.05.409** **M** Ash Black **556.05.310** Oak Natural **556.05.410** | **FOR 1200MM DRAWER N** Ash Black **556.05.311** Oak Natural **556.05.411** **O** Ash Black **556.05.312** Oak Natural **556.05.412**

INDIVIDUAL COMPONENTS. ORDER SEPARATELY FOR A CUSTOM DRAWER SOLUTION.



A STORAGE BOX LARGE, LONG 236x472x120mm Ash Black **556.03.350** Oak Natural **556.03.450** | **B STORAGE BOX LARGE, SQUARE** 236x236x120mm Ash Black **556.03.360** Oak Natural **556.03.460** | **C PLATE RACK** 340x180x 81mm Ash Black **556.04.330** Oak Natural **556.04.430** | **D METAL STORAGE BOX DIVIDER** 108x110x79mm **556.08.312** | **E CUTLERY DIVIDER, 500MM DEEP** 300x472x26mm Ash Black **556.03.300** Oak Natural **556.03.400** | **F MULTIFUNCTION INSERT** 152x472x49mm Ash Black **556.03.330** Oak Natural **556.03.430** | **G CROSS INSERT** 137x472x37.5mm Ash Black **556.03.390** Oak Natural **556.03.490** | **H FOIL ROLL HOLDER, DEPTH 500MM** 137x472x45mm Ash Black **556.04.320** Oak Natural **556.04.420** | **K 3 PART SPICE INSERT, DEPTH 500MM** 137x472x26mm Ash Black **556.04.300** Oak Natural **556.04.400** | **M KNIFE BLOCK DEPTH 500MM** 137x472x26mm Ash Black **556.04.310** Oak Natural **556.04.410** | **O METAL DRAWER BOX CROSS INSERT** 221x221x43 mm Graphite Black **5556.08.330** | **N DRAWER BOX SHALLOW, SQUARE** 236x236x49mm Ash Black **556.03.370** Oak Natural **556.03.470**



Note: Inserts **G**, **H**, **K**, **M** can be dropped into multi function insert **F** to offer solid sides dependent on drawer configuration. Oak natural shown. Voids are created when using these inserts. Use Antislip matt.

Ninka Cuisio

COMPACT AND CLASSY.

Available in 3 finishes:
Black, Graphite Translucent
and White Translucent.

European made.

For Alto or Studio 400 mm **550.28.443** | 450 mm **550.28.444** | 500 mm **550.28.445** | 600 mm **550.28.447** | 700 mm **550.28.448** |
800 mm **550.28.450** | 900 mm **550.28.449** | 1000 mm **550.28.452**

For Grass Scala 400 mm **550.28.423** | 450 mm **550.28.424** | 500 mm **550.28.425** | 600 mm **550.28.427** | 700 mm **550.28.428** |
800 mm **550.28.430** | 900 mm **550.28.429** | 1000 mm **550.28.432**

The minimalistic design of the **Cuisio** insert makes it a classic choice for your drawers. Translucent plastic trays glow with light reflection - the perfect solution if you are lighting the insides of your drawers. **Cuisio** trays by NINKA, are available in three different colour finishes and suit a variety of drawer widths with adjustable dividers. **Perfectly modular designed for an exact drawer fit.**



Aluminium divider strips.

For Alto or Studio 300 mm **556.90.730** | 400 mm **556.90.731** | 450 mm **556.90.732** | 500 mm **556.90.733** | 600 mm **556.90.734** |
700 mm **556.90.739** | 800 mm **556.90.735** | 900 mm **556.90.736** | 1000 mm **556.90.738**

For Grass Scala 400 mm **556.90.711** | 450 mm **556.90.712** | 500 mm **556.90.713** | 600 mm **556.90.714** | 700 mm **556.90.719** |
800 mm **556.90.715** | 900 mm **556.90.716** | 1000 mm **556.90.717**





Docking Drawer

HIDING CABLES FOR A CLUTTER-FREE BENCHTOP AESTHETIC.

Docking Drawer is the in-drawer electrical outlet charging and powering today's connected lifestyle. Install **Docking Drawer** in kitchens, bathrooms, closets or professional locker rooms and medical facilities providing an innovative and functional power source for a clutter-free aesthetic.



DOCKING DRAWER DUO USB PLUG

For powering USB charged devices.
Charges up to 4 devices at a time.
Max. current (DC): 1.5A at 5V DC per port

White **822.53.150**
Black **822.53.152**



DOCKING DRAWER TRIO USB + POWER PLUG

For powering hair dryers, straightners and anything requiring 10 amps of service while also providing USB ports for charging.
Features: Interlocking safety feature - thermostatic shut off.
Cuts power to the outlet if the temperature rises over 50°C.
Charges up to 4 devices at a time.
Max. current (AC): 10A per outlet at 240V combined USB
Max. current (DC): 1.5A at 5V DC per port

White **822.53.151**
Black **822.53.153**



Note:

≥51 mm clearance behind drawer required.
Recommended ≥75 mm drawer height. Please refer to pg.59 for dimensional drawings.



THE ECONOMICAL POP-UP POWER SOLUTION.

Pop-up Power

Häfele vertical pop-up power outlets are an ideal solution for adding power and USB charging ports to kitchen benchtop, office spaces or your home when needed, without compromising the appearance.

Mechanical push-to-open version.



WITH WIRELESS CHARGING

POP-UP QUAD OUTLET WITH WIRELESS CHARGING

3 x GPO, 2 x USB A
Mounting: Ø 95 mm cutout

Black **822.53.301** White **822.53.302**



POP-UP QUAD OUTLET WITHOUT WIRELESS CHARGING

3 x GPO, 2 x USB A
Mounting: Ø 95 mm cutout

Black **822.53.290** White **822.53.291**



WITH WIRELESS CHARGING

POP-UP DUO OUTLET WITH WIRELESS CHARGING

1 x GPO, 2 x USB A
Mounting: Ø 95 mm cutout

Black **822.53.280** White **822.53.281**



POP-UP DUO OUTLET WITHOUT WIRELESS CHARGING

1 x GPO, 2 x USB A
Mounting: Ø 95 mm cutout

Black **822.53.270** White **822.53.271**

POP-UP POWER SUPPLY.

Point Pod

Point Pod is the next generation of benchtop integrated power dock. Featuring electronic opening and height adjustment for different benchtop thicknesses.

POINT POD COMPACT

2 x GPO

Hole Size (mm): Diameter: 100 | Tolerance: +0.3/-0.7

Inner disc size (mm): Diameter: 92 | Tolerance: +0.3/-0.7

Includes 1900mm lead with 3 pin plug

White **822.74.945**

Black **822.74.948**

COMPACT USB

1 x GPO, 1 x USB

White **822.74.946**

Black **822.74.949**

POINT POD MULTI

3 x GPO, 2 x USB

Hole Size (mm): Diameter: 100 | Tolerance: +0.3/-0.7

Inner disc size (mm): Diameter: 92 | Tolerance: +0.3/-0.7

Includes 1900mm lead with 3 pin plug

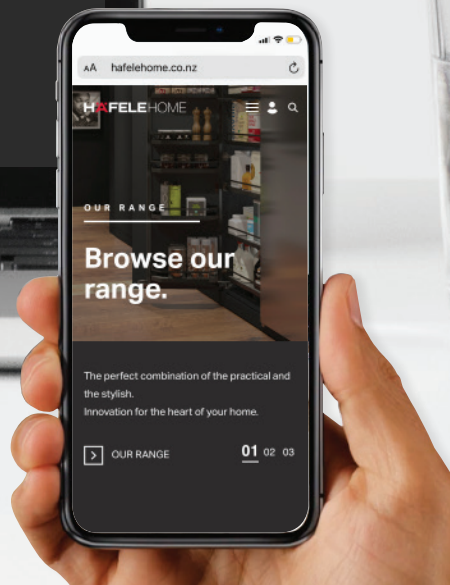
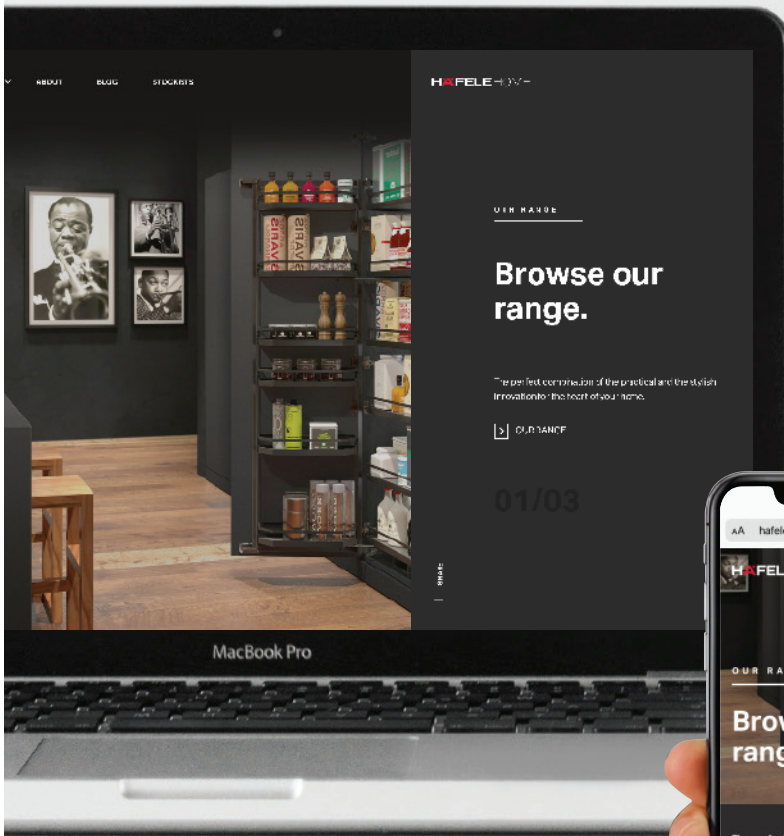
White **822.74.944**

Black **822.74.947**



Be Inspired.

WWW.HAFELEHOME.CO.NZ





Designer Waste Systems

HAFELE

PREMIUM DESIGNER RANGE.



Refer to:
The Complete Häfele 2020
 from page
7.100

Ninka One2Five

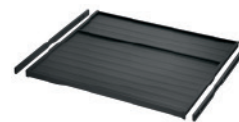
FLEXIBLE WASTE SEPARATION

Designed to sit in a hanging frame mounted on twin wall metal drawer sides. System elements are: Pre-assembled hanging frame, waste bin containers to fit frame, full-extension 500 mm drawer runners, metal drawer sides and drawer front fixing components. Choice of individual bin lids or cover plate. Bins are food safe and can also be used for storage.



ONE2FIVE FRAME - FOR SCALA DRAWER

Cab. width mm	Light Grey	Dark Grey
300	502.90.711	502.91.411
400	502.90.713	502.91.453
450	502.90.714	502.91.454
500	502.90.715	502.91.415
600	502.90.716	502.91.416



ONE2FIVE COVER PLATES

Cab. width mm	Light Grey	Dark Grey
300	502.90.641	502.91.441
400	502.90.643	502.91.443
450	502.90.644	502.87.424
500	502.90.645	502.87.425
600	502.90.647	502.87.427
Rail top plate (2 reqd)	502.90.690	502.87.490



Description	Light Grey	Dark Grey
Small pail - 5.5lt	502.90.510	502.90.610
Small pail - 8lt	502.90.501	502.90.601
Individual lid	502.90.101	502.87.601
3 Compartment lid	502.90.111	502.87.616
Bio filter lid	502.90.131	502.87.631
Large pail - 12lt	502.90.512	502.90.612
Large pail - 17lt	502.90.502	502.90.602
Large pail - 26lt	502.90.503	502.90.603
Large pail - 32lt	502.90.504	502.90.604
Individual lid	502.90.102	502.87.602
5 Compartment lid	502.90.122	502.87.622
Bio filter lid	502.90.132	502.87.632
Dustpan set	502.90.153	502.90.154
Cleaning set	502.90.162	502.87.489

Hailo



Cargo-Synchro Range

MAXIMUM SPACE UTILISATION

The Cargo-Synchro range by Hailo is designed to maximise space utilisation, offering a large size bucket in a minimal area. Cargo-Synchro is a complete waste segregating system with synchronised over extension self-closing runners that soft-close and are particularly smooth and quiet running. Now available in Slate Grey!



30 LITRE CAPACITY
CARGO-SYNCHRO ST30
For carcase width 300 mm
Slate Grey **502.58.501**



36 LITRE CAPACITY
CARGO-SYNCHRO ST45
For carcase width 450 mm
Slate Grey **502.58.502**



55 LITRE CAPACITY
CARGO-SYNCHRO ST45
For carcase width 450 mm
Slate Grey **502.58.503**



46 LITRE CAPACITY
CARGO-SYNCHRO ST50
For carcase width 500 mm
Slate Grey **502.58.504**



44 LITRE CAPACITY
CARGO-SYNCHRO ST50
For carcase width 500 mm
Slate Grey **502.58.505**



56 LITRE CAPACITY
CARGO-SYNCHRO ST60
For carcase width 600 mm
Slate Grey **502.58.506**



54 LITRE CAPACITY
CARGO-SYNCHRO ST60
For carcase width 600 mm
Slate Grey **502.58.507**

EASY CLEAN AND ODOURLESS.

Waste Bin **Concelo**

Concelo has been designed to deliver a waste bin without compromise. Every element has been engineered and tested to ensure it delivers both the form and function that should be expected from a premium kitchen appliance. **Concelo boasts not just a clean design aesthetic, but it helps keep your kitchen looking and smelling clean.**



Active Lid System

The Lid is hidden from sight at the top of the bin inside the cabinet, and drops down to close over the buckets when the unit is closed. The motion of the lid is synchronized with the opening and closing action of the unit, which lets you keep your hands free to simply drop waste into the bin.



Controlling Odour

Managing waste can be a challenge, especially the smell. Concelo overcomes this with its all new Active Lid, designed to help control odours. All components are also removable for washing.



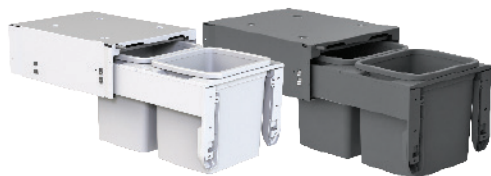
Easy Clean Components

Made from stain resistant polypropylene, they are easily cleaned with soapy water. Simply clip them back into position in seconds. Concelo's Clip'n'Clean trays are not only easy to clean, they avoid any potential food traps in difficult to reach spaces.

View the Hideaway catalogue online.



Scan me.



2x15 LITRE BUCKETS

Min. cabinet width 400mm
 Min. internal width 367mm
 Min internal height 335 mm
 Min. internal depth 525mm

Arctic White **503.53.773**
 Cinder **503.53.673**



2x20 LITRE BUCKETS

Min. cabinet width 400mm
 Min. internal width 367mm
 Min internal height 440mm
 Min. internal depth 525mm

Arctic White **503.53.783**
 Cinder **503.53.683**



2x35 LITRE BUCKETS

Min. cabinet width 450mm
 Min. internal width 417mm
 Min internal height 640 mm
 Min. internal depth 525mm

Arctic White **503.53.794**
 Cinder **503.53.694**

nlnka[®]



SIMPLE ORGANIC WASTE DISPOSAL.

Ninka **Bio Bin**

Bio Bin simply hangs on the outside of a cabinet door to capture your food waste, such as vegetable peelings, and then unhooks to store inside the cabinet when not in use. It's ergonomic and easy to use.

NINKA BIO BIN

Dimensions (WxDxH): 227 x 172 x 170 mm
Suitable for door thickness: 16-22 mm

Finish

Dark grey

502.47.996



Designer Bathrooms

HAFELE

PREMIUM DESIGNER RANGE.

ROOM LIGHTING, MOOD
LIGHTING, DEMISTER &
SOUND SYSTEM

ALL IN ONE!



ENGINEERED
BY **HAFELE**



SEE YOUR BATHROOM IN A NEW LIGHT.

Multi-Dimensional Bathroom Mirror

The Multi Dimensional Mirror (shown below) comes fully assembled and unites the functions of make-up light, room lighting, mood lighting, mirror defogger and sound system in an elegant design.

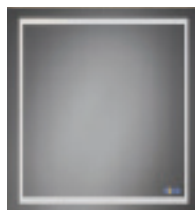


MULTI-DIMENSIONAL MIRROR

Colour change from cool white or warm white
Make-up lighting, mood lighting, demister and bluetooth capable sound system all in one.

900 x 600mm

983.19.011

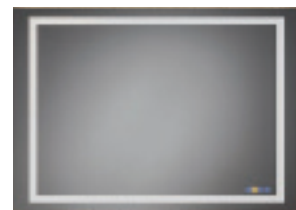


MULTI-DIMENSIONAL MIRROR

Colour change from cool white or warm white
Make-up lighting, mood lighting, demister and bluetooth capable sound system all in one.

900 x 900mm

983.19.021



MULTI-DIMENSIONAL MIRROR

Colour change from cool white or warm white
Make-up lighting, mood lighting, demister and bluetooth capable sound system all in one.

900 x 1200mm

983.19.031

Vanity Mirror

The innovative Illuminated Vanity Mirror allows the user to select the desired light colour by simply touching the mirrors surface. Additionally; it rotates, magnifies and swivels on a pivot arm and is designed to last thanks to its rust-proof high quality coating.



ILLUMINATED VANITY MIRROR
With 5 x magnification, 5W

Warm white or Daylight White can be selected via touch keys.

Mirror dimension: 190 x 190 x 30mm
Max. extension length: 385mm

Chrome plated polished **983.27.002**



ILLUMINATED VANITY MIRROR
With 5 x magnification, 5W

Warm white or Daylight White can be selected via touch keys.

Mirror dimension Ø: 216mm
Max. extension length: 385mm

Chrome plated polished **983.27.012**



VANITY MIRROR
With 3 x magnification

Swivels and rotates via double pivot arm, stainless steel/brass.

Dimension: 445 x 308 x 31.5mm
Mirror dimension Ø: 200mm

Chrome plated polished **980.60.922**



ILLUMINATED VANITY MIRROR
With 5 x magnification, 5W

Warm white or Daylight White can be selected via touch keys.

Mirror dimension: 190 x 190 x 30mm
Max. extension length: 385mm

Graphite black **983.27.003**



ILLUMINATED VANITY MIRROR
With 5 x magnification, 5W

Warm white or Daylight White can be selected via touch keys.

Mirror dimension Ø: 216mm
Max. extension length: 385mm

Graphite black **983.27.013**

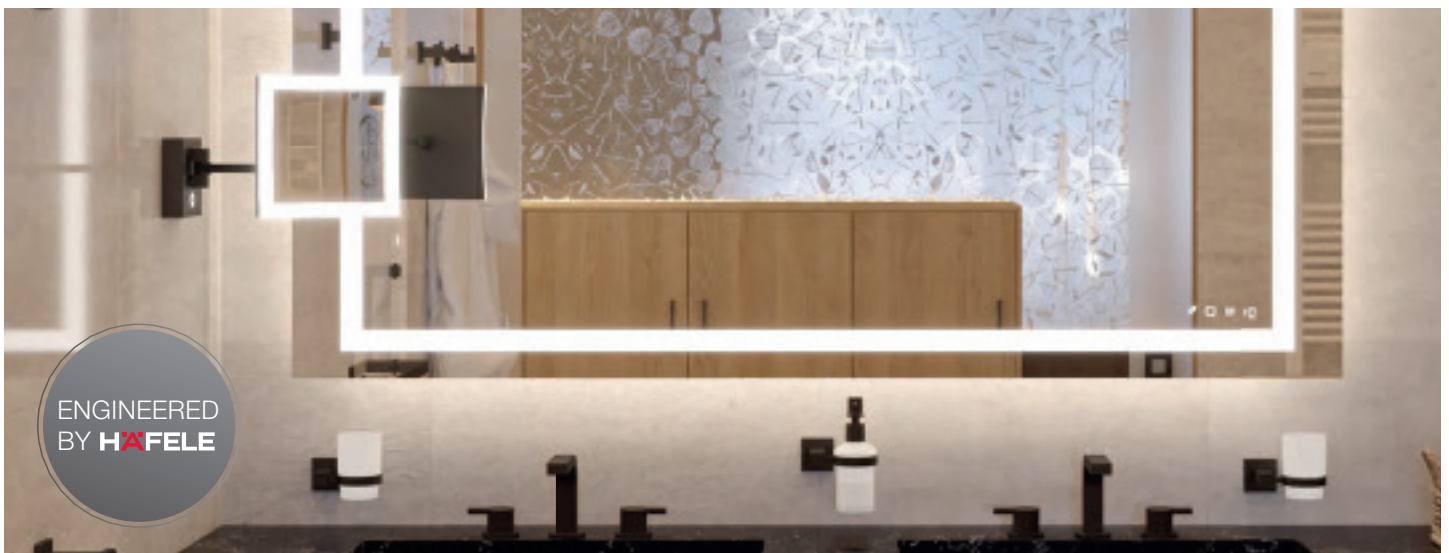


VANITY MIRROR
With 3 x magnification

Swivels and rotates via double pivot arm, stainless steel/brass.

Dimension: 445 x 308 x 31.5mm
Mirror dimension Ø: 200mm

Graphite black **980.60.923**



ENGINEERED
BY **HAFELE**



Designer Laundries

HAFELE

PREMIUM DESIGNER RANGE.

THE PREMIUM LAUNDRY HAMPER FROM HIDEAWAY.


Concelo[®] Laundry

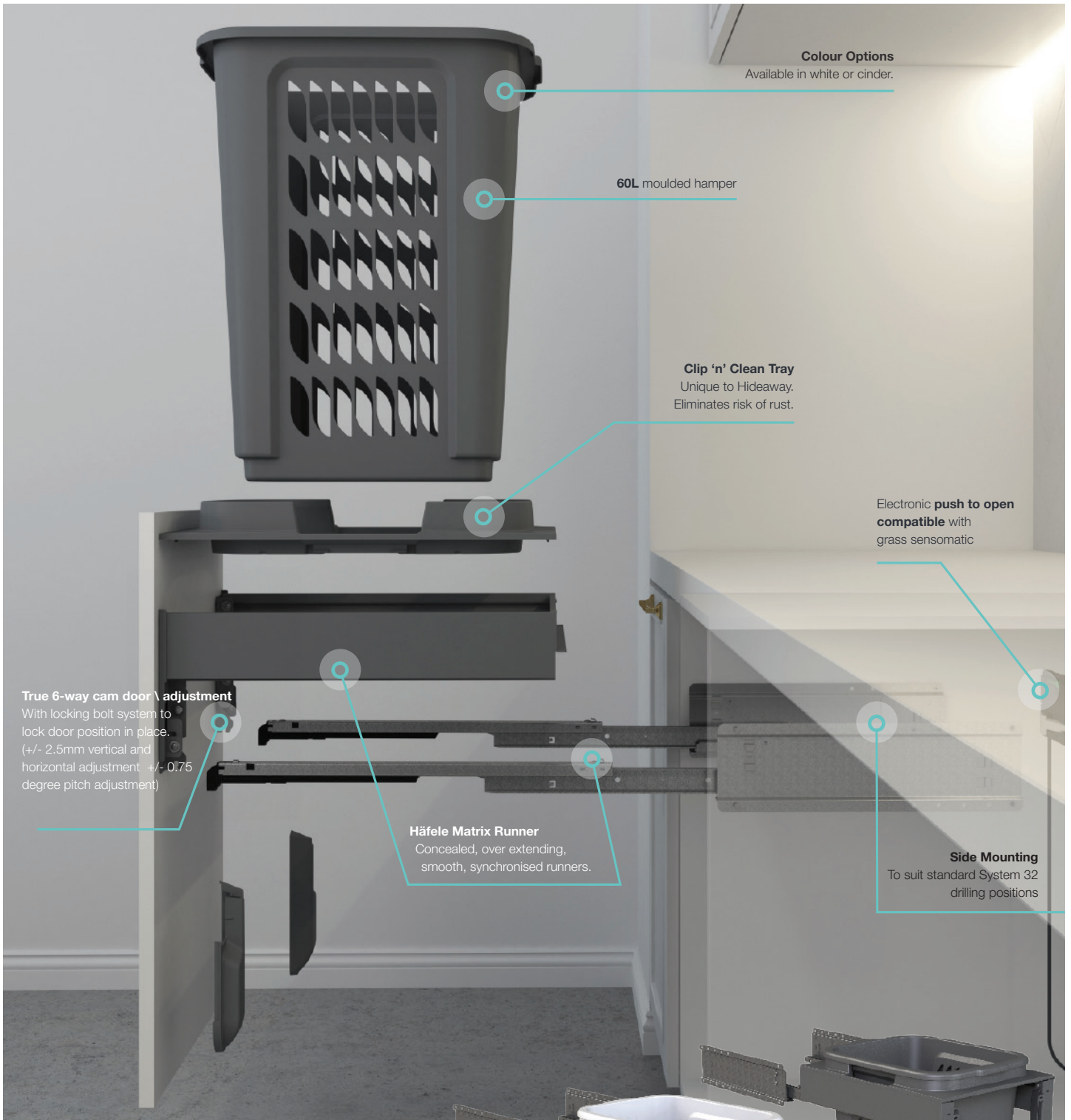
Two hampers can be installed side by side in your laundry to separate washing. Concelo[®] Laundry Hampers can also be integrated into wardrobe or bathroom cabinetry to discreetly hide laundry. The large 60L hamper is big enough to cope with a family load of washing and still be easy to remove and carry. Made from light-weight polypropylene, it features air vents to reduce moisture, moulded handles for easy grip and a solid base to prevent drips.

Concelo.
BY HIDEAWAY

View the Hideaway catalogue online.



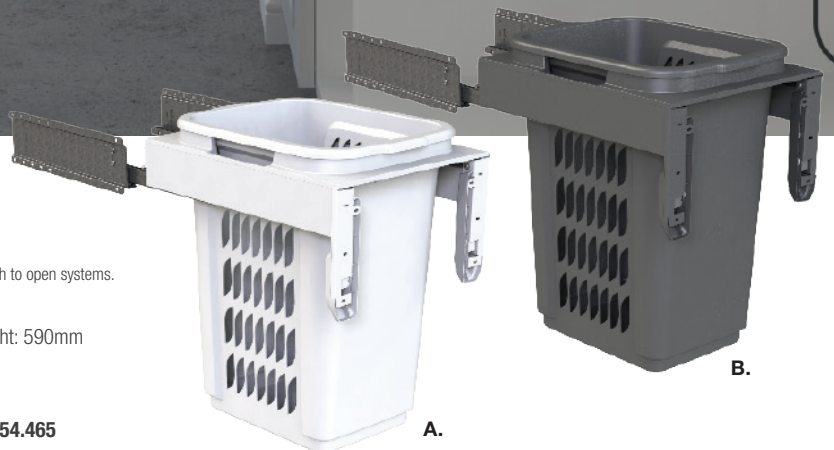
 Scan me.



* Please refer to the Hideaway brochure for full technical detail.
Please refer to the technical guides on the Hideaway Bins website for installation of electronic push to open systems.

HIDEAWAY CONCELO® 60 LITRE HAMPER

Min. cabinet width: 450mm | Min. internal width: 418mm | Min. internal height: 590mm
Recommended min. internal height: 630mm | Min. internal depth: 525mm



A. Arctic White, CRL160D-W 503.54.765 | **B.** Cinder, CRL160D-C 503.54.465



THE LATEST IN FUNCTIONAL LAUNDRIES.

HAILO Laundry

The modular system that stores everything for your laundry in one place neatly out of sight, until it's needed. Ironing, sorting washing and cleaning can all be achieved from the one base. The patented pin-screw system ensures fast and easy installation. What's more, the clearance needed for door-hinges is easily adjusted by turning the knurled nuts to get the modules slightly off centre - whether left hand or right hand hinged doors.





The Hailo Laundry Carrier with its two large volume laundry-baskets of 33 litre capacity each, provides sufficient space for two washing machine loads of laundry. The large baskets are easy to remove, carry around and to place anywhere on the floor even when fully loaded, thanks to the ergonomic handles and manageable sized hampers.

LAUNDRY-CARRIER 45

66 (2x33) Litre capacity
For carcass width: 450mm

White with white
 and blue hampers **502.72.722**

LAUNDRY-CARRIER 60

2x33, 1x12 and 1x2.5 Litre capacity
For carcass width: 600mm

White with white
 and blue hampers **502.72.724**

Removable baskets make sorting or transporting of washing a breeze.



PULL-OUT SHELF + BASKET

Basket designed to hold one load of washing.
Width 562-578mm **Depth** 472mm **Height** 360mm

Material: Metal/Plastic
 White/Blue **520.06.740**

The pull-out shelf with basket solution is smooth running, thanks to German made quality and the baskets are large and robust (left).

View the DressCode catalogue online.



Häfele Dresscode

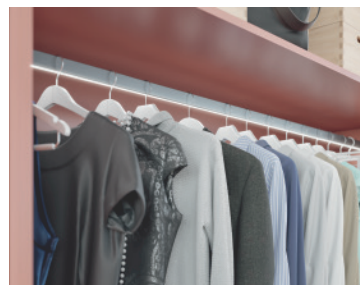
THE LATEST IN WARDROBE ORGANISATION.

A perfect wardrobe is as individual as you are. Perfect in form and function, with custom storage. Adding handles and elegant sliding doors turns the wardrobe into a complete design experience. **Dresscode** offers a complete range of add-on fittings and everything blends seamlessly for a cohesive look. Choose from a vast array of functional fittings that allow a clear overview of the contents of your wardrobe and save time through clever organisation ... all with a stylish design.



The Wardrobe Lift

A convenient way to use the "air space" in the closet. Simply pull the wardrobe lift down to the desired height and then let it gently glide back upwards.



The Wardrobe Rail

The wardrobe rail as an intelligent rail system. Integrated rubber strip for noise reduction, integrated illumination with indirect light, sliding hooks for handbags and accessories.



The Pull-Out Frame

The basic system for inserts & attachments. Individual panels available: Shallow and deep boxes, laundry bag, shoe rack and jewellery inserts.



The Pull-Out Trouser Rail

Practical, space-saving and with convincing design. It is virtually indispensable in any wardrobe.



Designer Sink and Tapware

HAFELE

PREMIUM DESIGNER RANGE.

Silgranit PuraDur II Designed to last.

The composite kitchen sinks contain 80% quartz sand, which is the hardest element of granite.

Thanks to its excellent components SILGRANIT® PuraDur® offers an easy care and level of resistance that has never been offered before for coloured composite sinks.

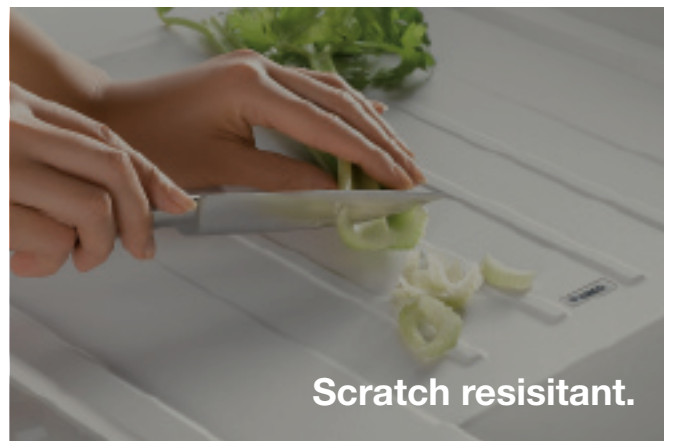




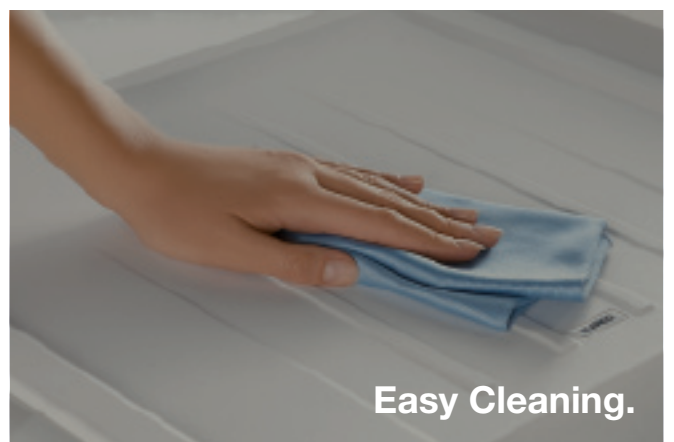
100% safe for food preparation.



Heat resistant up to 280°.



Scratch resistant.



Easy Cleaning.

OFFERING INNOVATIVE DESIGNS AND PREMIUM FUNCTIONALITY.

BLANCO Etagon

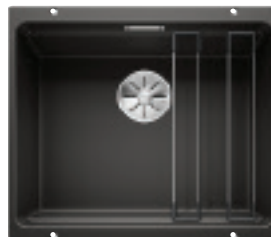
BLANCO **Etagon** is an innovative sink system that features a subtle 'step' on the inner side of the sink. This step allows the specially designed 'rails' to be positioned in the sink. Use the rails to hold dishes while they are drying, to transfer hot pots or drainers ... even place them on the bench. The large bowl also makes it easy to clean cumbersome kitchenware such as baking trays. BLANCO **Etagon** is available in Stainless steel or Silgranit coloured stone finishes.

Heat resistant up to 280° celcius

Scratch resistant

Impact resistant





ETAGON 500-U

For base cabinet: 600 mm
 Bowl depth: 190 mm | Corner Radius: 35 mm
 Mounting: Undermount

Stainless Steel	567.66.600
White	567.66.550
Rock Grey	567.72.556
Anthracite	567.66.530
Black	567.72.356

ACCESSORIES

Colander 174 x 74 x 436 mm	565.69.112
Additional rails 60 x 386 mm	565.69.250
Glass chopping board 240 x 435 mm	565.69.152
Timber chopping board 240 x 424 mm	565.69.056

*Supplied with: Waste fitting with space saving pipe, 3/2" Basket strainers, one pair of rails.



BLANCO METRA 6 S

Can be installed either way round and also as an undermount sink
 Bowl depth: 190/130 mm
 Mounting: Bowl reversible

Anthracite	565.71.310
White	565.71.710
Alu-Metallic	565.71.910
Rock Grey	565.71.510



BLANCO METRA XL 6 S

Can be installed either way round and also as an undermount sink
 For base cabinet: 600 mm | Bowl depth: 190
 Mounting: Bowl reversible

Anthracite	565.76.390
White	565.76.790
Alu-Metallic	565.76.990
Rock Grey	565.67.590
Black	565.76.396



BLANCO METRA 9

Can be installed either way round and also as an undermount sink
 For base cabinet: 900 mm | Bowl depth: 190 / 190 | Mounting: Bowl left

Anthracite	565.70.352
White	565.70.752
Alu-Metallic	565.70.952
Rock Grey	565.70.552

*Supplied with: Waste fitting with space saving pipe, 3½" Basket strainers

SILGRANIT™ PURADUR™ II

BLANCO Metra



SILGRANIT™ PURADUR™ II

BLANCO Naya



NAYA 6

Can be installed either top mount or undermount sink
For base cabinet: 600 mm | Bowl depth: 200
Corner radius: 15 mm

Anthracite	565.71.340
White	565.71.740
Alu-Metallic	565.71.940
Rock Grey	565.71.536
Black	565.71.336



BLANCO NAYA 8

Can be installed either top mount or undermount sink
For base cabinet: 800 mm | Bowl depth: 200 / 200 | Corner radius: 15 mm

Anthracite	565.71.340
White	565.71.740
Alu-Metallic	565.71.940
Rock Grey	567.70.546



NAYA 8 S

Can be installed either topmount or undermount sink
For base cabinet: 800 mm | Bowl depth: 200 / 200 | Corner radius: 15 mm
Mounting: Bowl left only

Anthracite	565.71.350
White	565.71.750
Alu-Metallic	565.71.950
Rock Grey	565.71.556

*Supplied with: Waste fitting with space saving pipe, 3½" Basket strainers

SILGRANIT™ PURADUR™ II
BLANCO Subline



BLANCO SUBLINE 180-U

For base cabinet: 200 mm
 Bowl depth: 130 mm | Corner radius: 10 mm
 Mounting: Undermount

Anthracite	565.71.370
White	565.71.770
Alu-Metallic	565.71.970



BLANCO SUBLINE 320-U

For base cabinet: 400 mm
 Bowl depth: 190 mm | Corner radius: 10 mm
 Mounting: Undermount

Anthracite	565.81.350
White	565.81.750
Alu-Metallic	565.81.950
Rock Grey	565.81.550



BLANCO SUBLINE 400-U

For base cabinet: 500 mm
 Bowl depth: 190 mm | Corner radius: 10 mm
 Mounting: Undermount

Anthracite	565.82.370
White	565.82.770
Alu-Metallic	565.82.970
Rock Grey	565.82.576
Black	570.26.306



BLANCO SUBLINE 500-U

For base cabinet: 600 mm
 Bowl depth: 190 mm | Corner radius: 10 mm
 Mounting: Undermount

Anthracite	567.67.370
White	567.67.770
Alu-Metallic	567.67.970
Rock Grey	567.67.570
Black	567.67.376

*Supplied with: 3½" Basket strainers, fixing kit (sealing on site).



SILGRANIT™ PURADUR™ II

BLANCO Subline



BLANCO SUBLINE 340/160-U

For base cabinet: 600 mm
Bowl depth: 190 / 130 mm | Corner radius: 10 mm
Mounting: Undermount

Anthracite	567.69.330
White	567.69.730
Alu-Metallic	567.69.930
Rock Grey	567.69.536



BLANCO SUBLINE 480/320-U

For base cabinet: 900 mm
Bowl depth: 200 / 200 mm | Corner radius: 10 mm
Mounting: Undermount

Anthracite	567.66.340
White	567.66.740
Alu-Metallic	567.66.940
Rock Grey	567.66.546
Black	567.66.346



BLANCO SUBLINE 350/350-U

For base cabinet: 800 mm
Bowl depth: 200 / 200 mm | Corner radius: 10 mm
Mounting: Undermount

Anthracite	567.81.380
White	567.81.780
Alu-Metallic	567.81.980
Rock Grey	567.81.580
Black	570.26.363



BLANCO SUBLINE 700-U LEVEL

For base cabinet: 800 mm
Bowl depth: 140 / 200 | Corner radius: 10 mm
Mounting: Undermount

Anthracite	567.81.370
White	567.81.770
Alu-Metallic	567.81.970
Rock Grey	567.81.570
Black	567.81.366

*Supplied with: *3½" Basket strainers, fixing kit (sealing on site).

OFFERING INNOVATIVE DESIGNS AND PREMIUM FUNCTIONALITY.

BLANCO Tapware



BLANCO LINUS

Anthracite	569.10.390
White	569.10.790
Rock Grey	569.10.590

*Suitable with high mains pressure water cylinders only.



BLANCO LINUS-S

Anthracite	569.06.340
White	569.06.740
Rock Grey	569.10.540

*Suitable with high mains pressure water cylinders only.



BLANCO ALTA COMPACT

Anthracite / Chrome	569.06.300
White / Chrome	569.06.700
Rock Grey / Chrome	569.10.500

*Suitable with high mains pressure water cylinders only.



BLANCO ALTA-S COMPACT

Anthracite / Chrome	569.05.380
White / Chrome	569.05.780
Rock Grey / Chrome	569.10.580

*Suitable with high mains pressure water cylinders only.



BLANCO CULINA-S

Chrome	569.06.220
Stainless Steel	569.06.020

*Suitable with high mains pressure water cylinders only.

*Suitable with high mains pressure water cylinders only.



FUNCTIONAL AND ECONOMICAL

Häfele Tapware



GOOSENECK TAP

Matt Black

569.41.310



GOOSENECK TAP

Polished Chrome

566.58.220



SQUARELINE MIXER TAP

Polished Chrome

569.40.250



GOOSENECK MIXER TAP

Polished Chrome

569.40.240



MIXER TAP RECTANGLE

Polished Chrome

569.40.230



FLEXIBLE GOOSENECK

Polished Chrome

569.40.270



FLEXIBLE RECTANGLE

Polished Chrome

569.40.260



FLEXIBLE GOOSENECK

Polished Chrome

566.58.230



ANTHRACITE



ROCK GREY



CLASSIC BLACK AND WHITE



DARK ON DARK



FRESH AND BOLD



WHITE



Designer Fittings

HAFELE

PREMIUM DESIGNER RANGE.

ART DECO OR LINEN TEXTURED PERFECTION.

H1925 Handle Series



Brushed, brass plated **106.69.402**



Black, matt **106.69.404**



Antique, brass plated **106.69.403**

H1910



Champagne coloured, matt **106.70.000**



Black, matt **106.70.003**



Brass plated, polished **106.70.005**



Antique, brass plated **106.70.006**



Brass plated, brushed **106.69.502**



Black, matt **106.69.501**



Chrome plated, polished **106.69.500**



Stainless steel **132.15.630**



Chrome plated, polished **132.15.230**



Black, matt **132.19.211**



Brass plated, brushed **132.19.210**

*Please note all handles have 160mm hole centres.

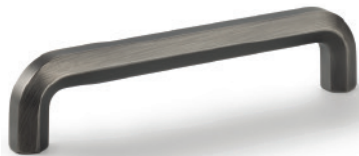


BLACK IS THE NEW BLACK.

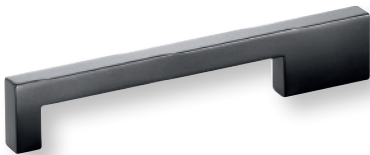
Black Handle Series



Nickel plated, black polished **106.61.354**



Nickel plated, black polished **106.62.606**



Black, matt **110.34.355**



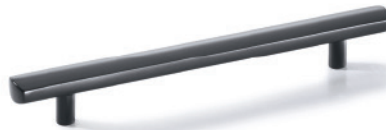
Black, matt **110.34.327**



Black, matt **110.34.386**



Nickel plated, black polished **106.61.304**



Black, matt **110.35.376**



Black, matt **106.62.195**



Antique, iron **131.10.517**



Oil rubbed, bronze **106.61.124**



Oil rubbed, bronze **106.61.044**



Black, matt **110.34.306**

*Please note all handles have 160mm hole centres.



Smart Cube

VERSATILE OPEN SHELVING.

Incredibly smart. **Smart Cube** is a shelving system that can do almost anything and looks good in the architecture of any room. Thanks to its core, a small intelligent cube it can be extended as required and is very stable, whether integrated in existing furniture concepts or fixed to the wall, individually or in groups, one on top of the other or adjacent. Technically perfect, visually enriching and virtually invincible. With its elegant profile geometry, **Smart Cube** makes an attractive addition to any room.



With its elegant profile geometry, SMART CUBE makes an attractive addition to any room.



Weight: 50 kg/m² max.
 Material: Aluminium
 For shelf thickness: ≤16 mm
 Depth: 250 mm

DIM (H X W) MM	BLACK
300 x 600	793.06.331
300 x 900	793.06.332
300 x 1200	793.06.333
390 x 600	793.06.361
390 x 900	793.06.362
390 x 1200	793.06.363
450 x 600	793.06.341
450 x 900	793.06.342
450 x 1200	793.06.343



Order reference

- > Drop-in shelves not supplied.
- > Cutting dimensions of board material (WxD) = B - 38 mm x 212 mm



Supplied with:

- > 2 End sections
- > 4 Pole sections
- > Fixing material (wall plugs for solid brick walls, screws, cover caps).

YouK Shelving System

THE VERSATILE, GERMAN MADE SHELVING SYSTEM.

As a wardrobe, in the kitchen, as a wall unit, in the bathroom or office - Kesseböhmer **YouK** turns storage into a design feature. **YouK shelving also features a teflon coating to ensure it's scratch resistant and will look good for many years to come.** The various frame sizes can be combined and arranged in many ways to create different shelf heights and different looks can be achieved depending on the choice of shelf material and thickness.





KESSEBÖHMER
CLEVER STORAGE



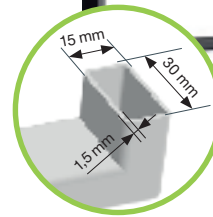
Simple fixture to the wall



Simple screw fixing of the shelves



Abrasion-resistant surface



Spacing:

Top and bottom	Mid sections	Mid sections
100mm (all depths)	350mm (320 depth)	232mm (200 depth)

DESCRIPTION	DEPTH MM	CAT. NO.
YouK shelving midway unit 668mm high	200	793.20.310
YouK shelving midway unit 905mm high	200	793.20.311
YouK shelving unit 550mm high	320	793.20.301
YouK shelving unit 905mm high	320	793.20.302
YouK shelving larder unit 1500mm high	320	793.20.303
YouK shelving larder unit 2200mm high	320	793.20.304
YouK adjustable foot (100mm)		793.20.390

LOX5

The essence of
four generations.



> LIGHT IN DRAWERS

Light integrated in drawers illuminates the contents for ultimate ease of access. A switch can be added so the light will automatically switch on and off when the drawers are opened and closed.

> LIGHT IN THE PLINTH

Plinth lighting can really bring the wow-factor to a kitchen design. It's the perfect ambient light - as well as a stunning design emphasis. The perfect finishing touch to showcase a stunning design.

Easy. Logical. Linear.

LOOX5



➤ LIGHT ON WORK SURFACES

Soft lighting that falls directly onto the worktop is the perfect illumination for work surfaces - offering **ample task lighting for cooking, chopping and preparing**. Ideally this should be a neutral white light.

➤ LIGHT IN CABINETS

The main purpose of the ceiling light is to serve as a basic overall light, which, by its nature, creates shadow zones within cupboards. **Flat light or directional spotlights in cabinets illuminate the entire interior making organising, searching, and finding much easier.**



Loox 1152

LED SILICONE STRIP LIGHT.

The LOOX **LED1152** is an elegant strip light made from silicone material. The light opening is on the narrow side of the strip, giving a slim and under-stated illumination without visible LED points. **LED1152** is designed for push-fitting into a groove cut-out or for sliding into and aluminium profile housing and is a glamorous feature to instantly illuminate the wardrobe in your home.



LOOX LED 1152

120 LEDs/m, 12 W/m, IP44, Energy efficiency class: A

- Features: For push fitting into groove, for sliding into aluminium profile.
- Splash proof for use in wet rooms.
- Can be split once both pieces can be used with separate lead.
- Light opening on the narrow side, LED points not visible.

Supplied with: 1 LED strip light with 2 x 2 m soldered lead 2.5 A/22 AWG (1 each on the left/right side of the strip).

Colour	Length mm	Wattage	Voltage	Art. No.
4000 K	1000	12 W	12 V	833.00.985
4000 K	2500	30 W		833.00.986
4000 K	3000	36 W		833.00.987
3100 K	1000	12 W		833.00.988
3100 K	2500	30 W		833.00.989

Description	Art. No.
Driver 20 W	833.74.960
Driver 40 W	833.74.962
Mains lead	833.89.001

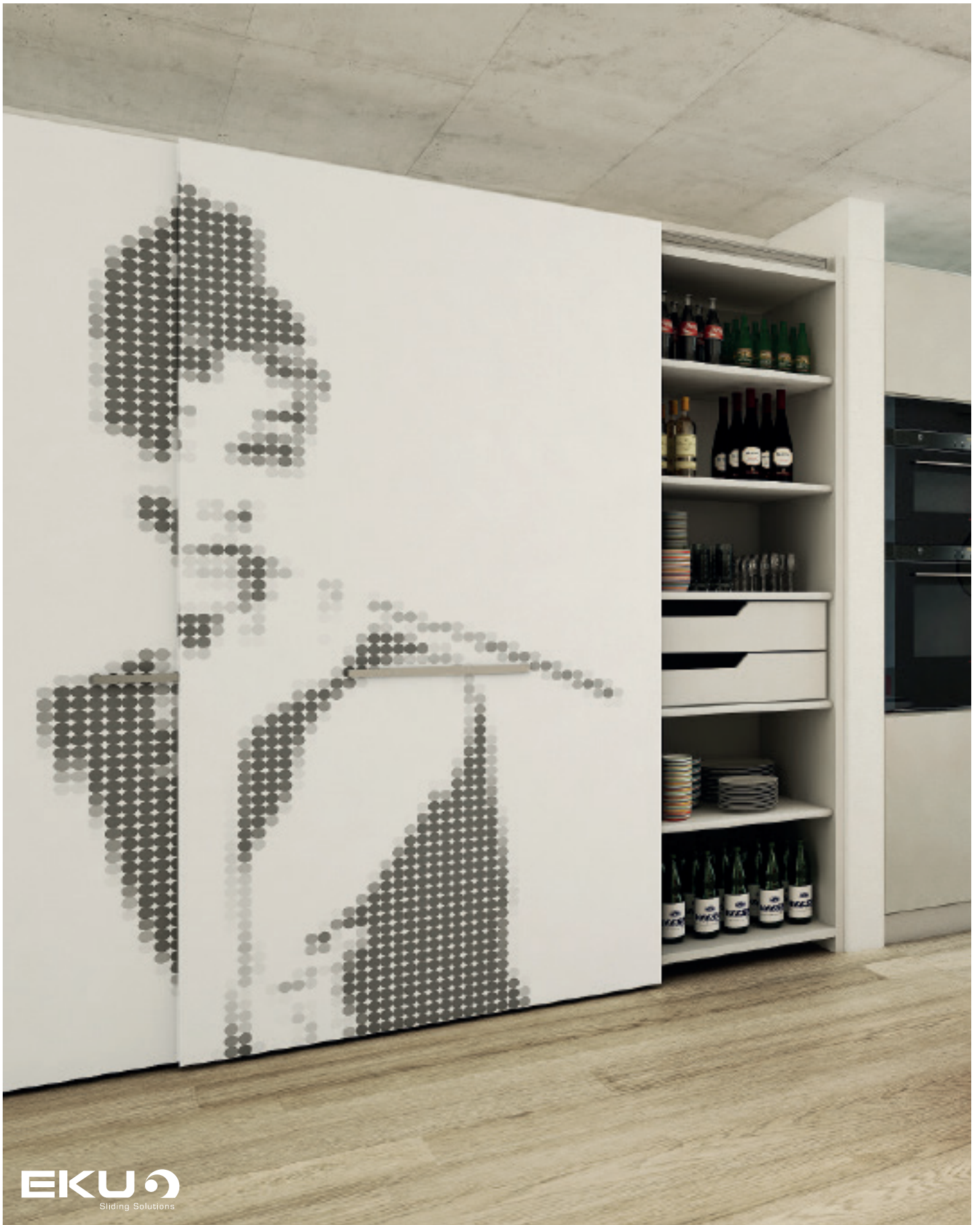




Designer Sliding Fittings

HAFELE

PREMIUM DESIGNER RANGE.





Frontino 20 H

Base cabinet For running, for 2 doors, with installation instructions.

FOR CAB WIDTH MM	FOR DOOR WIDTH MM	CAT. NO.
1200-1399	597-696	406.02.060
1400-1599	697-796	406.02.061
1600-1799	797-896	406.02.063
1800-1999	897-996	406.02.064
2000-2199	997-1096	406.02.065
2200-2400	1097-1196	406.02.066

Refer to:
The Complete Häfele 2020
from page
10.10

Frontino 20 H OS

Wall cabinet For running, for 2 doors, with installation instructions.

FOR CAB WIDTH MM	FOR DOOR WIDTH MM	CAT. NO.
1200-1399	597-696	406.02.070
1400-1599	697-796	406.02.071
1600-1799	797-896	406.02.072
1800-1999	897-996	406.02.073
2000-2199	997-1096	406.02.074
2200-2400	1097-1196	406.02.075

Refer to:
The Complete Häfele 2020
from page
10.11

Frontino 40 H

Tall cabinet For running, for 2 doors, with installation instructions.

	FOR CAB WIDTH MM	FOR DOOR WIDTH MM	CAT. NO.
Ⓢ	1200-1799	594-893	406.02.055
Ⓜ	1800-2199	894-1093	406.02.056
Ⓛ	2200-2400	1094-1194	406.02.057



Refer to:
The Complete Häfele 2020
from page
10.14

Slido D-Line 42 100-S

BARN DOOR FITTING.

The rustic sliding door fitting for single-leaf timber sliding doors.



SLIDO D-LINE 42 100-S SLIDING DOOR FITTING

Rustic set with running track for single leaf sliding doors.

Door weight ≤100 kg **Door thickness** 35-45 mm

Material/finish Graphite Black, Steel

MODEL	DOOR WIDTH	LENGTH	CAT. NO.
D-line 42 100-S	750 - 1000 mm	2000 mm	941.32.000

Set includes: 2 Running gears, 1 Running track, 2 Stoppers (left and right), 1 Wall mounting set, 1 Anti-Derailment devices, 1 Floor guide, 1 Hex key, 1 Drill bit Ø8.5 mm



Slido Design-M

INVISIBLE RUNNING EQUIPMENT.

The elegant sliding door fitting that conceals the running equipment by integrating it into the door.



Refer to:
**The Complete
Häfele 2020**
Wooden **10.148**
Glass **10.178**

SLIDO DESIGN 80-M SLIDING DOOR FITTING (WOOD/GLASS)

Invisible running equipment integrated in door.

For private residential areas, for 1-leaf doors, for hard fillors (laminare, PVC, tiles) and soft floors (carpet, cork - only in combination with bottom track).

Door weight ≤80 kg

Door width 800-1800 mm

Door height ≤2600 mm

For glass thickness Tempered safety glass: 5 and 6 mm | Laminated glass: 6-6.5 mm | Wooden Door thickness: 38-42 mm

Material/finish Silver coloured anodised or black anodised

Installation Wall mounting, floor must be even and level

**Shhh! Now
whisper quiet
comfort with
soft closing.**





Refer to:
**The Complete
Häfele 2020**
from page
10.131



View the Hawa
Concepta in action.



Scan me.



Hawa Concepta

NOW WITH DAMPED HINGE.

Whisper-quiet sliding doors have always been around at Hawa Sliding Solutions. With hinged door soft closing mechanisms, the last possible sources of noise are now being attacked. If you listen carefully, you will be able to hear... nothing at all, actually.

HAWA CONCEPTA DAMPED HINGE

Features: Pivot/sliding system that is unique on the market, with hinged door soft closing mechanism invisibly integrated in the hinge!
Extremely harmonious and smooth closing movement.
Outstanding comfort due to impact noise elimination.

HÄFELE

DESIGNER PRODUCT RANGE / 07.2021

Häfele New Zealand Ltd.

Auckland 16 Accent Drive, East Tamaki, Auckland

Wellington The Wool Store, Level 1 262 Thorndon Quay, Wellington

Christchurch 12 Sir James Wattie Drive, Hornby South, Sockburn, Christchurch

Phone: 0800 442 335 | **Email:** info@hafele.co.nz | www.hafele.co.nz