

THE ART OF SPECIFICATION

ECO OUTDOOR®

Contents

INTRODUCTION TO ECO OUTDOOR

A little bit about us | Page 5

THE ART OF SPECIFICATION

How we specify stone | Page 13

ARCHITECTURAL PROJECTS

The best of the best | Page 25

OUR STONES

Our product range | Page 40

FLOORING

Flooring products | Page 43

WALLING

Walling products | Page 201



Introduction to Eco Outdoor

We service architects, designers and builders and we see the product specification process as a collaborative one.

WE'RE EXPERTS IN STONE

Eco Outdoor specialises in the supply of innovative and unique exterior surface treatments for residential and commercial projects. When it comes to natural stone, we're committed to leading the market with innovative and considered design solutions. We represent a vertically-integrated, wholesale direct model. We work from quarry to project, enabling us to offer fiercely competitive pricing and a high degree of control over supply. Our ability to source, buy and develop a truly unique product range is second to none. More importantly, we understand the importance of delivering our product to you in a consistent, timely and cost-effective way.

WE SEE SPECIFICATION AS A COLLABORATIVE PROCESS

We service architects, designers and builders and we see the product specification process as a collaborative one. We also understand the importance of technical support as part of the specification process. As part of our commitment to working with specifiers, we've extensively tested our core product ranges for slip resistance, flexural strength, resistance to salt attack, absorption, density and we will only work with products which can be reliable and consistently supplied.

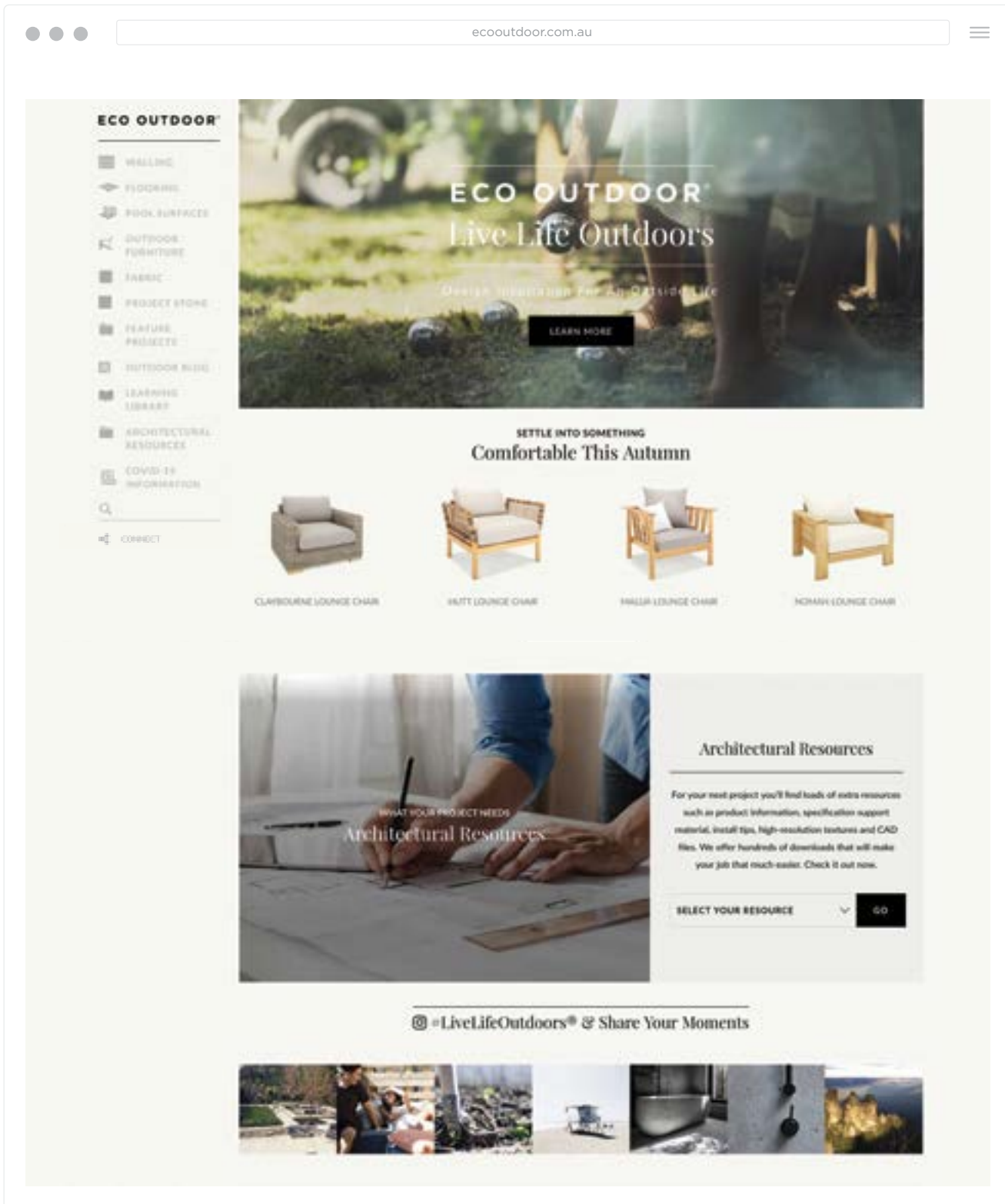
We're passionate about stone — its natural beauty, durability and sustainability. It's this passion that drives our constant product development to bring you a curated range of natural stone products that we truly believe in.

WE UNDERSTAND CONSISTENT QUALITY IS CRITICAL

Our international operations provide us with a high degree of product quality control over elements such as dimensional tolerance and finishing accuracy, enabling us to deliver product consistently and reliably. We understand the quarry production methodologies in detail which allows us to offer an extremely competitive pricing structure and a high degree of transparency. We are in constant contact with the quarry where your stone will come from which means that we can answer your product enquiries, track freight and manage logistics easily and effectively.

WE COLLABORATE AND CUSTOMISE

We're always looking for new ways to add more value within a standard range, whether it's by developing detailed finishing solutions, a higher level of customisation or new product formats such as our Linear Walling. Our aim is always to produce finishes and formats that are unique and relevant to our market but which also maintain the integrity of the raw material. We're always on the hunt for ideas, alongside traditional formats and techniques which have stood the test of time and can be re-interpreted in a new, modern context.



Our website is your best specification resource because it's been developed specifically with you in mind.

Architectural Resources ---

At Eco Outdoor, our website is the best specification resource because it's been developed specifically with you in mind. Visit the Architectural Resources section of our website and you'll see that we've developed a whole range of resources to support the specification process.

1. The technical data on each product range which covers:
 - Slip resistance
 - Water absorption
 - Bulk specific density
 - Flexural strength
 - Resistance to salt attack
2. High-resolution 3D textures for 3D CAD modelling
3. High-resolution deep-etch imagery for specification proposals
4. Product dimensions
5. Installation Guidelines for best-practice install
6. Product cards with dimensions and product format / finish detail
7. Specification book chapters for additional support

THE LEARNING LIBRARY IS A GREAT REFERENCE AREA

We've also collated our best content into our online 'Learning Library' which is regularly updated with the A-Z on everything, from choosing the best pool products, to stone maintenance and care.

VISIT OUR SHOWROOM TO GET A SENSE OF THE PRODUCT AT A LARGER SCALE

Our showrooms offer large-scale product displays so you can really get a sense of how colour and texture plays out over a larger area. When it comes to specification, nothing beats seeing the product in-situ over a larger area. If you'd like to send your clients in to view a product, please let your rep know so we can work with you to ensure that your client gets the best possible service.

STAY IN THE LOOP

On ecooutdoor.com.au you can also sign up to receive our bi-monthly newsletters which profile the latest Architectural Projects, new product developments and design events.

You can also join our design feeds here:



A Natural Imperfect Beauty

We have always been enamored by the beauty found in nature's artistry. As children we carefully collected little treasures from the garden and lovingly stowed them safely away. An odd shaped twig or a small stone that was so shiny it felt as if it must contain deep magical powers even as it just rested there in the garden bed.

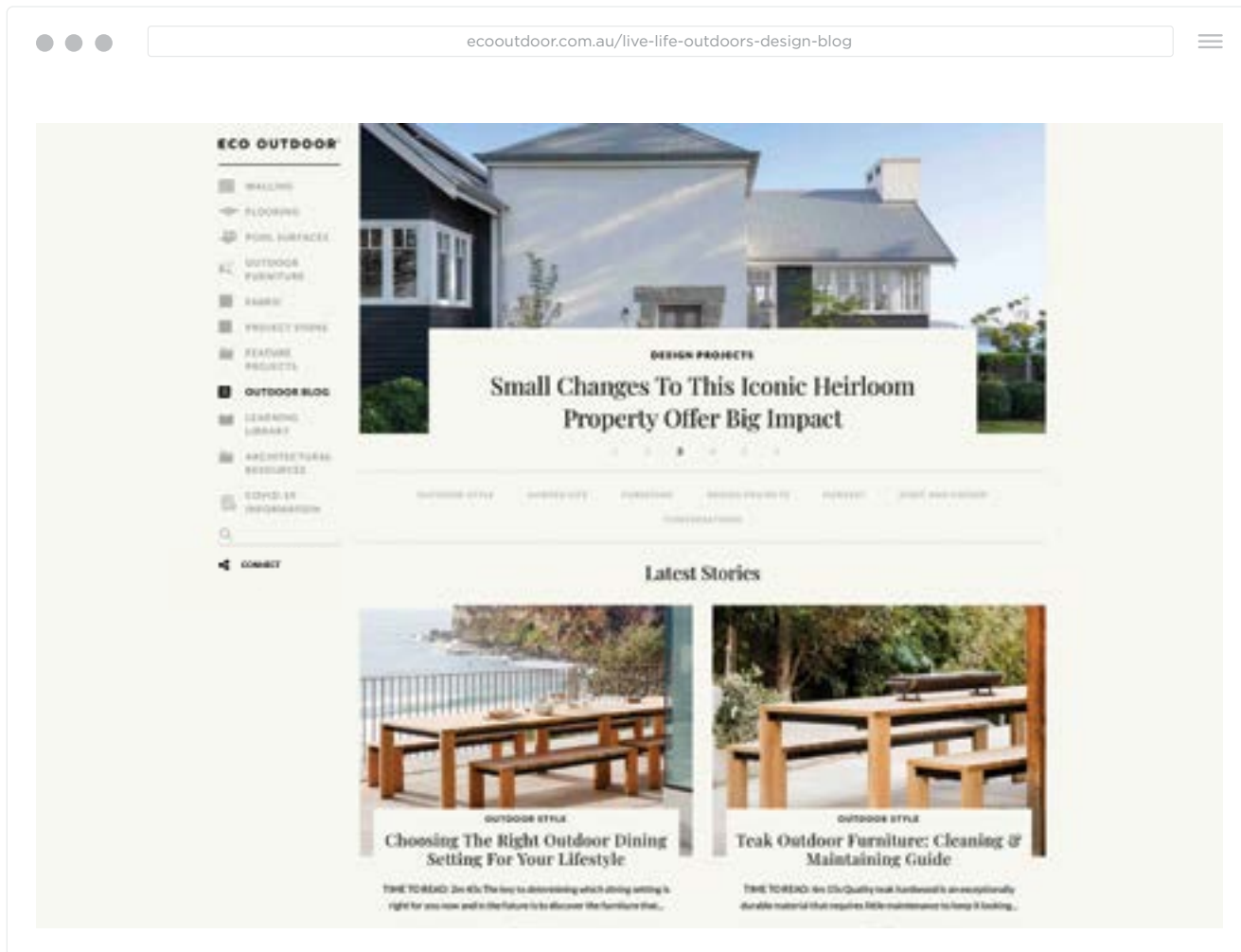
As adults, we still prize nature's bounty. An old re-used length of timber that could tell countless stories of lives gone before. A stone floor that has carried a thousand footsteps from one life to another. It strikes me as strange sometimes to focus only on the obvious environmental benefit of re-use when the most valuable inheritance is most surely the evolving character of the material and the textural hallmarks of time. This affection for simple materials is heightened by our love for the imperfections found within them; the battle scars of a life well lived that rest in the patina and carry with them a textured sense of history and memory.

We have always been compelled by the belief that real beauty is imperfect and incomplete and this becomes a guiding philosophy when we make aesthetic choices about the materials we work with; natural stone, fabrics, timber and even copper that age beautifully and change over time. We often talk about these materials as being 'forgiving' because

they blend the unavoidable marks of life amongst the blemishes of ageing; but what we really mean is that these materials will keep evolving as they accumulate the marks of a life well lived.

We believe that a well-designed space grounded in natural materials can have a marked effect on the person who lives there. So often living spaces can be defined by trends or fads and although the formulaic can be seen clearly in retrospect, it is often not visible at the moment of heightened popularity.

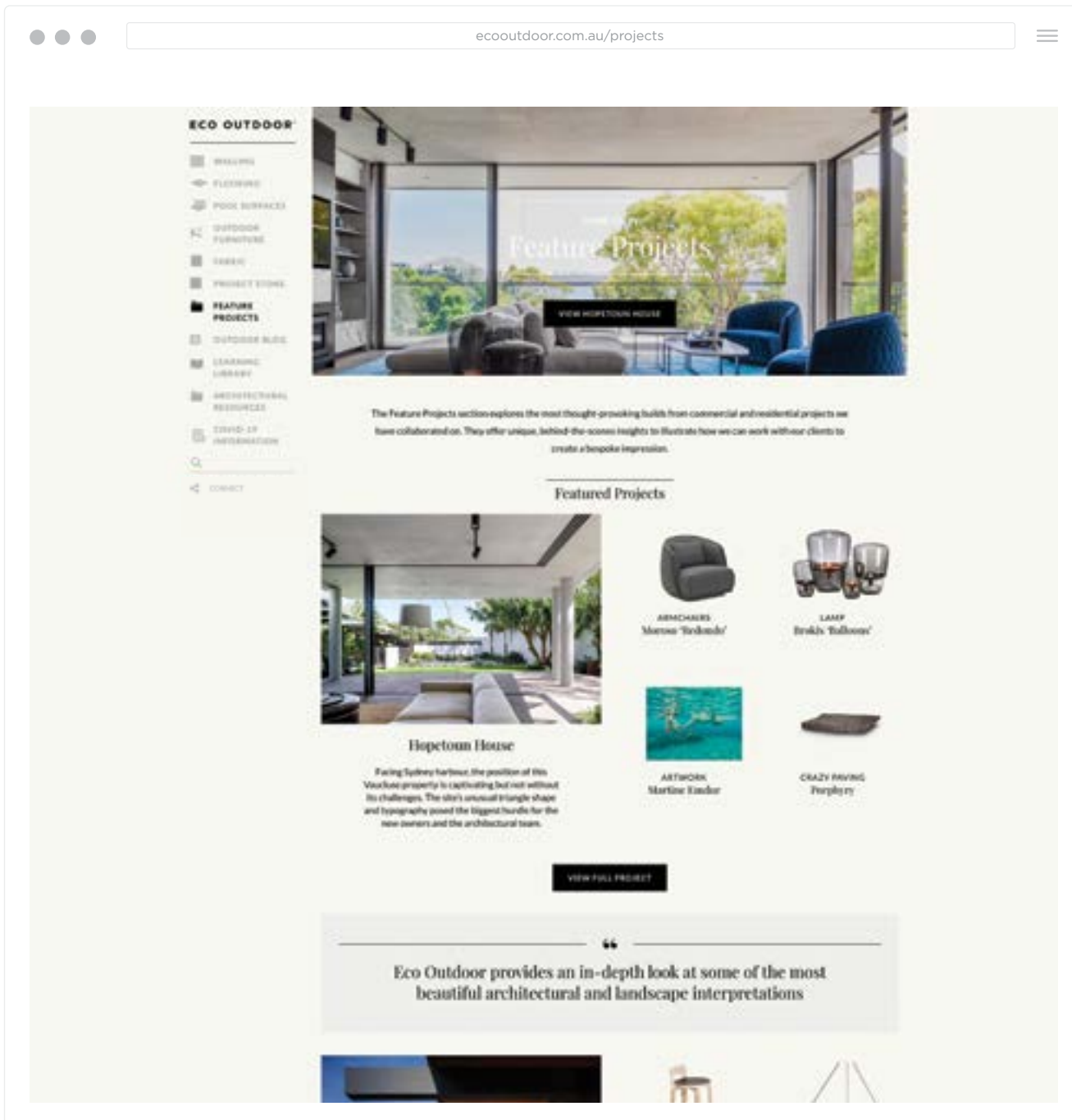
Our home is the corner of our world, our sacred escape from the gripping pace of life. Every choice of material builds a story and determines how well we will receive and accept the impulsive hands of time on the spaces we have made. Sometimes it is only when we live with things, that we can appreciate the simple imperfect beauty they offer. This is true of the materials we use in our homes and the landscapes that surround them. And as the late artist Jef Verheyen who had a profound eye for both material and light, once said; aesthetics matter because "seeing is feeling with the eyes".



Live Life Outdoors —

Our Outdoor Life Design Blog is not just about creating an outdoor space. It's a life story that celebrates getting back to basics. To the stuff that matters. Creating relationships and reconnecting with the land around us and the people who live on it with us. It's not grounded in a place or in things, but this way of life has a certain sensibility and aesthetic that many of us crave. It celebrates sustainability not just for the planet but people too. It recognises the importance of kinfolk and community as we seek to slow down and unplug, to create quiet moments of stillness in an otherwise noisy life.

An Outdoor Life helps us get back to basics outside in the fresh air and the sunshine. Because that's where the magic is.



Looking for Design Inspiration? _____

The Architectural Projects section of the website explores the most thought-provoking builds from commercial and residential projects we have collaborated on. They offer unique, behind-the-scenes insights to illustrate how we can work with our clients to create a bespoke impression.

We highlight how specific design details, fixtures and fittings — as well as the project palette of materials — come together to form one-of-a-kind architectural interpretations.



Project Stone

Our collaborative approach to high-level custom projects with hard-to-source stone.

We've developed a specialised range of distinctive and hard-to-source natural stone products that we call Project Stone. These products are sourced from all over the world and represent a strong option for architects and designers wanting something different.

The Project Stone range is only available for certain scale projects and due to its highly specialised nature, our team is involved very early on in the project so that we can help to manage product specification, sourcing and fabrication to ensure we can deliver the best solution for you.





We specialise in supplying innovative and unique exterior surface treatments for both residential and commercial projects.

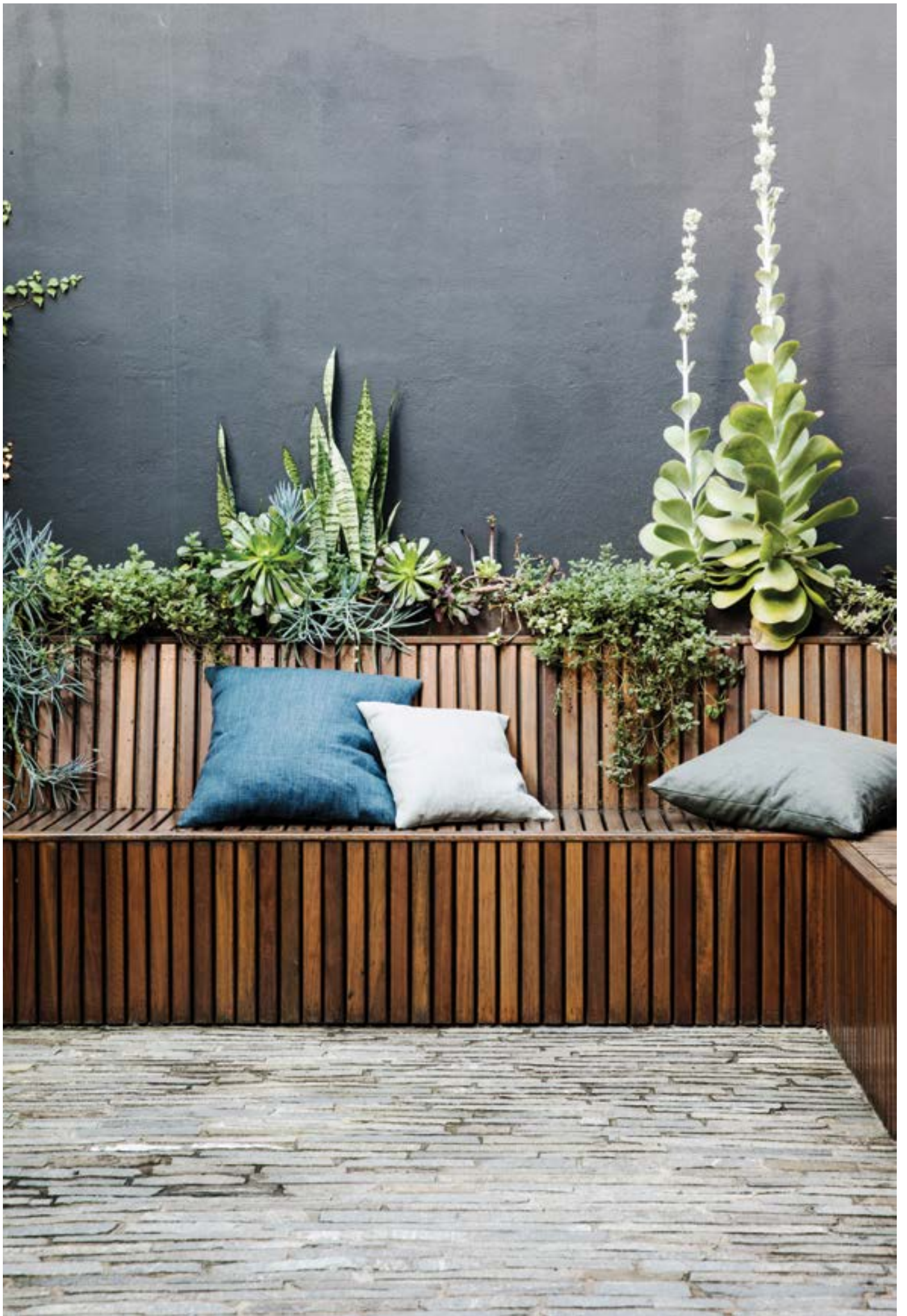
—

Our ability to source and develop a truly unique product range is second to none.

How we think about product development.

—

When we develop product we tend to look at the raw materials and observe how they've been used historically. Often a traditional format or an old-school installation technique can be reinterpreted in a new context to provide a more contemporary look. Think Filetti flooring which has been used in Italy for years but is a completely new flooring format here and will look markedly different in the context of a modern build.





How a stone performs is more important than its geological category.

Sometimes we get caught up in the geological details when what we're really trying to understand is how that stone will perform. Will it be strong and tough like a Granite or will it be softer like some Sandstones or have low water absorption like a Porphyry?

The other point is that within each stone type there is a spectrum and each product can be technically quite different. For instance at what point does a Limestone become a marble? For the majority of people, talking about a stone's properties and performance is ultimately more helpful than its geological basis.

Take Alpine as an example. Alpine is a dense, hard-wearing natural stone that will perform like a Granite so you'll see very little change to the stone over many years. The fact that it's a gneiss stone means very little to most conversations.

We want you to feel well informed when specifying our stone but we also want to highlight that we understand what's important when it comes to stone selection. Beyond origin and stone type, the performance of a stone is critical to understand during the specification process.

Stone looks most effective and has
more integrity in a built form.

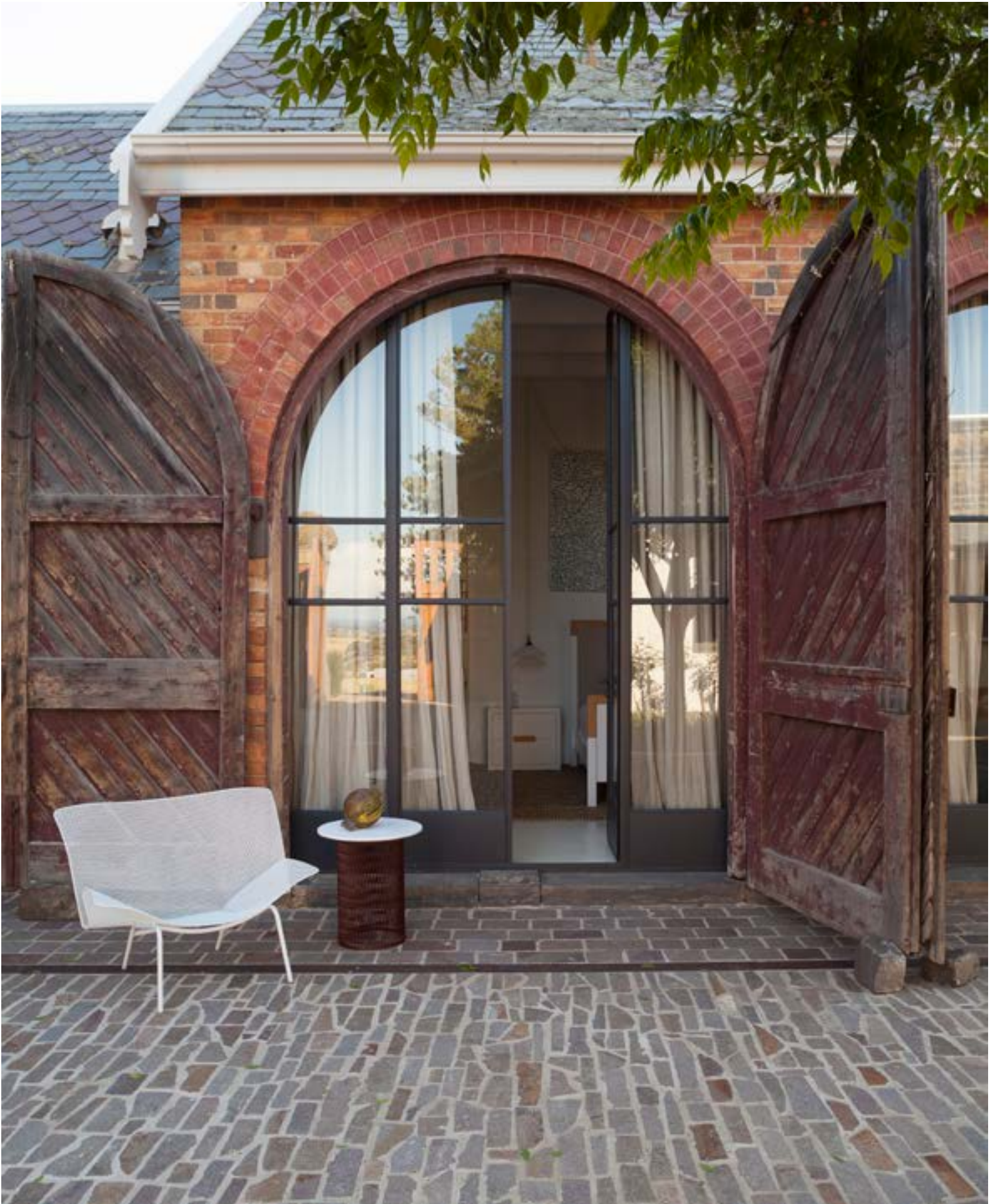
We think stone works best when it's architecturally grounded in the design; when it forms part of the built structure, as opposed to being stuck on as a surface texture.

The reason we provide finishing solutions is to help people achieve the look of a 'built wall' or column, because we understand this is key to maintaining design integrity.

Stone wall cladding looks beautiful when used as a blade wall running through the house which then becomes an external feature wall as it continues outside.

Stone also works really well when used to clad structural columns for building support, or a full stone fireplace that runs floor to ceiling and provides great textural relief in a modern painted room.





When geological make-up & inherent characteristics become important.

When looking at the suitability of a stone - to see how it will perform or hold up in a job - we like to look at two things:

First, we consider the geological make-up of the stone; its density, slip resistance and water absorption. Then we consider the inherent characteristics of the stone; how dark or light is it?

Obviously, darker stones hide more marks and are more forgiving in areas like driveways.

When we say a stone is 'forgiving', what we mean is that you can live a lot of life on it and it won't show up the stains.

We also consider whether it offers much movement of colour or whether it's quite uniform. The more uniform the colour and texture of a stone, the less forgiving it can be; especially if it's a light colour. Which is why we don't

recommend light-coloured pavers for high-traffic or driveway areas.

Let's take a stone like Porphyry for example. Porphyry is an incredibly dense, hard-wearing volcanic stone with an extremely low water-absorption figure.

This, coupled with the fact that it's made up of darker tones with significant movement along the colour spectrum from tawny reds to rusty browns to greys, means the stone is incredibly forgiving.

By way of comparison, let's consider our Toolara Sandstone. Sandstone is considerably more porous than Porphyry, coupled with the fact that the stone is a very light colour and uniform, means that the Sandstone is not only more prone to marking, but that the marks will be more noticeable. Which is why we'd discourage usage on areas such as a driveway.

It's not that we accept imperfections,
the imperfection is the point.

—

Sands, oxides, minerals from the earth and sea, extreme weather and climate conditions etch their marks onto natural stone, sculpting formations over thousands of years. It's the imperfections in natural stone that we love, the silent markings of history through the passage of time.



Architectural Projects

Our Architectural Projects showcase some of our favourite collaborations. They show the versatility of stone and the way it can be used in a broad spectrum of settings.

From a coastal holiday house that utilises large Beauford® Sandstone slabs, to an inner-city pub renovation where custom Cotto becomes the main feature; these projects are sure to inspire.

Polly Harbison Design | NSW

MACMASTERS BEACH HOUSE

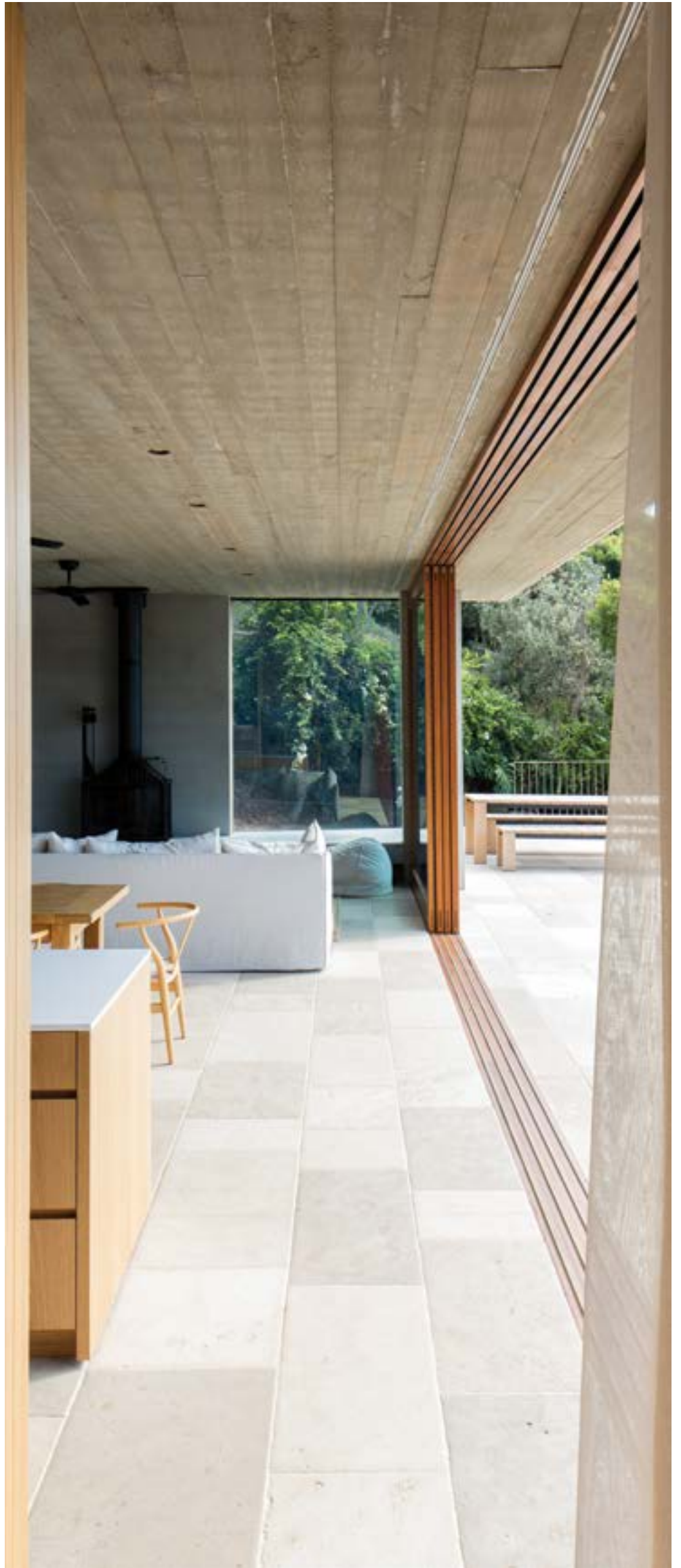
FLOORING | Beauford®, Sandstone

This simple-yet-sophisticated beach house by Polly Harbison Design sits into its exposed beachfront site, maintaining a small footprint in a wild native garden.

The pallet of roughly textured materials will weather with grace — timber, concrete and stone that feels soft under bare feet. An anchored ground floor supports a lightweight, durable timber box above and while the internal footprint of the living level isn't substantial, Polly has created a feeling of generosity as both sides open up and the Eco Outdoor Beauford® Sandstone flooring extends outside.

The terraces wrapping around the sides of the living area allows the occupants to follow the sun or shade while lounging outdoors.





Visit ecooutdoor.com.au to check out our featured Architectural Projects.



Refer to page 167 for more Beauford® imagery.

Bower Architecture | VIC

KATE'S HOUSE

FLOORING | Endicott®, Crazy Paving



Kate's House, by Bower Architecture, displays a stunning use of natural, raw materials. Blackbutt timber, Eco Outdoor Lagano Limestone and Endicott® Crazy Paving are used to add texture and interest while staying true to the modernist aesthetic of the existing home.

Jade Vidal of Bower Architecture, notes that given the abundance of artwork, sculpture and 'stuff of everyday family life' on display in the house, the material palette was deliberately restrained.

The cool greys of the Endicott® and Lagano help to achieve just this; grounding the home whilst allowing the finer design details to shine through.



Visit ecooutdoor.com.au to check out our featured Architectural Projects.



Refer to page 95 for more Endicott® imagery.

Matt Gibson | VIC

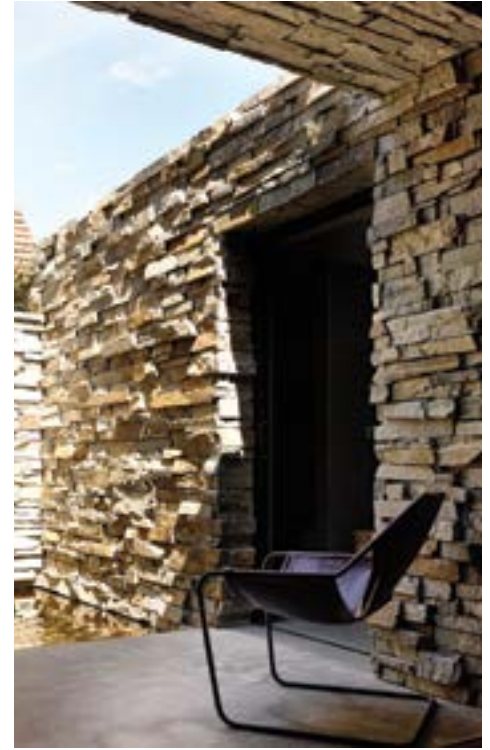
CONCRETE HOUSE

FLOORING | Endicott®, Filetti WALLING | Baw Baw, Dry Stone

Concrete House, by Matt Gibson Architecture & Design, is a brilliant example of a cohesive use of materials and space.

Composed of two longitudinal zones located north and south of an east-west spine, Concrete House utilises vertical connections and void spaces to balance out its robust palette of materials.

From the exterior, a lush green landscape by Eckersley garden Architecture provides textural and tonal relief from the Endicott® Filetti stone driveway and the concrete and Baw Baw Dry Stone façade of the home.



Visit ecooutdoor.com.au to check out our featured Architectural Projects.



Refer to page 111 for more Endicott® imagery. Refer to page 211 for more Baw Baw imagery.



Zyme Studios | Santa Monica, California

OBSTRUCT HOUSE

WALLING | Roda, Linear Walling



Californian project 'Obstruct House' by Zyme Studios showcases modernist minimalist design at its best.

The simplicity of form, space, materiality, detail, and colour shows restraint and a careful paring down.

Eco Outdoor's Roda Linear Walling is a sophisticated limestone split stone product, and is featured on the project's external base, and internally within the staircase space.

Used as continuous exterior cladding it provides visual appeal by expressing the natural characteristics of the stone and compliments the overall design.





Visit ecooroutdoor.com.au to check out our featured Architectural Projects.



Refer to page 237 for more Linear Walling imagery.

SJB & Tess Regan Design | NSW

THE BUENA MOSMAN

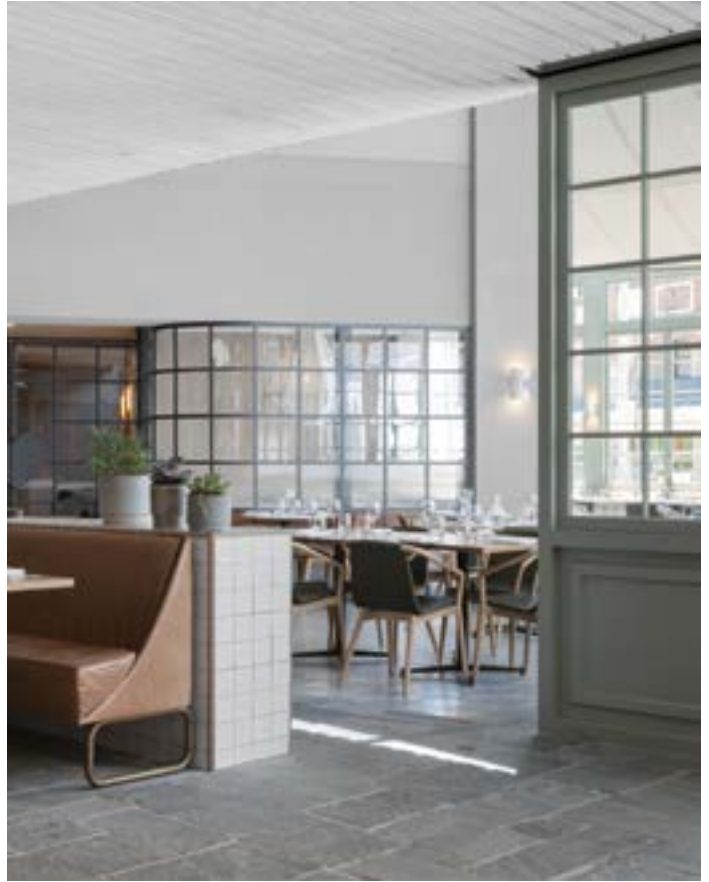
FLOORING | Endicott®, Split Stone WALLING | Custom Arrotato, Cotto



Architects and interior designers SJB, in collaboration with Tess Regan Design, were inspired by the original character this early 1900s public house and created a variety of exciting spaces with uncompromising style in this refined renovation.

The hotel was opened up to the outside, consolidating all the services to maximise profitable floor area as one of the top priorities. This has been achieved through transitioning the materials from inside to out.

Eco Outdoor custom Cotto wall tiles, which were laid in a bespoke herringbone pattern, wrap the bar, while the Eco Outdoor hand-chipped Endicott® Split Stone laid in a modular pattern creates a sense of flow underfoot.



Visit ecoor.com.au to check out our featured Architectural Projects.

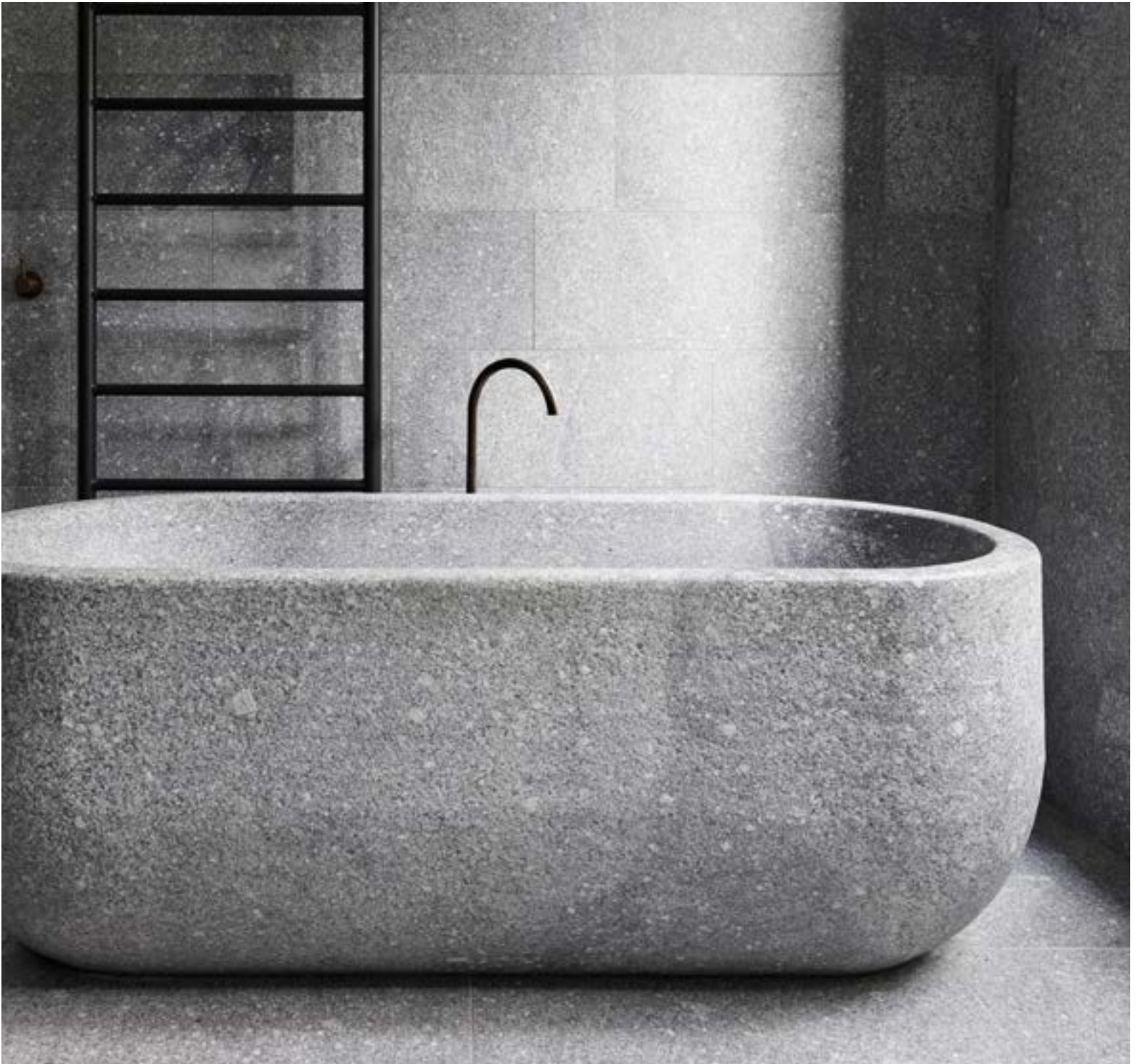


Refer to page 179 for more Endicott® imagery. Refer to page 203 for more Cotto imagery.

b.e. architecture | VIC

ARMADALE RESIDENCE

FLOORING, WALLING, VANITY AND BATH | Custom Fallow, Granite



Armadaale Residence is the result of a collaboration between b.e. architecture and Smart Design Studio.

The project showcases the impact that the use of one palette of materials can achieve as well as the possibilities for customisation to create a truly unique look.

In the master bedroom en-suite, Eco Outdoor Fallow Granite is used for the custom bath and vanity — engineered from solid blocks to achieve a dense, textural finish.

The use of three types of Granite unifies the external and internal spaces and although a substantial material, the heaviness of the Granite is balanced out by the one-palette application, achieving a sense of evenness throughout the home.



Visit ecooutdoor.com.au to check out our featured Architectural Projects.



Refer to page 121 for more Granite imagery.

Hecker Guthrie | VIC

MIDDLE PARK RESIDENCE

FLOORING, WALLING AND BENCHTOPS | Custom Seville, Granite

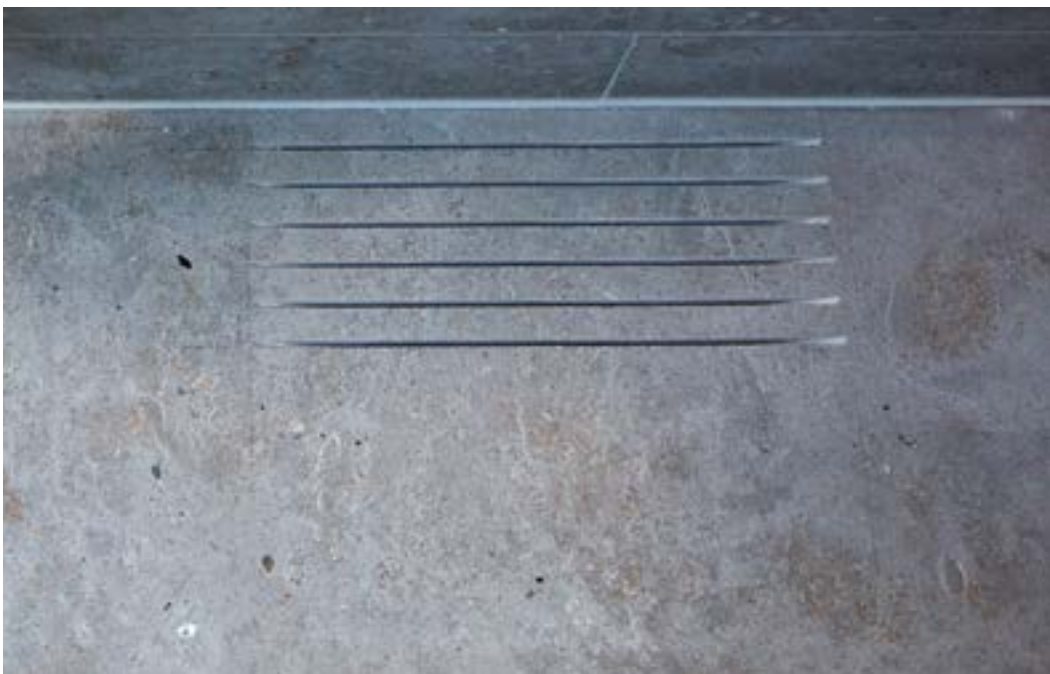
The brief for this project was to create a modern extension for the back of the property while maintaining the federation style of the home front.

A new back section of the house with its very modern shape and profile, required a certain sensitivity to allow both spaces to work together.

Designers Hecker Guthrie directed that flooring material transitioned from a timber floor board in the old section of the home to large Eco Outdoor Seville stone slabs. This stone was then customised to be incorporated into the kitchen island bench and table.

The Seville stone to the rear part of the house, with the island bench and table growing out of the flooring, provides a focal point to the double void above.





Visit ecooutdoor.com.au to check out our featured Architectural Projects.



Refer to page 121 for more Granite imagery.

Flooring

BLUESTONE

Page 44

Versatility offers potential
for every project

LIMESTONE

Page 134

Natural timeless appeal

COBBLESTONES

Page 60

The sense of coming home

PEBBLES

Page 150

Creating organic decorative textures

CEMENT

Page 74

History and artisan tradition

PORPHYRY

Page 156

Unrivalled durability

COTTO

Page 80

Touched by hand, slow flooring

SANDSTONE

Page 166

Gentle & tactile underfoot

CRAZY PAVING

Page 94

Organic movement through
irregular shapes

SPLIT STONE

Page 178

Working with the stratification layers

FILETTI

Page 110

Texture, tones & traction

TRAVERTINE

Page 190

Provincial & romantic appeal

GRANITE

Page 120

Working together to achieve
a bespoke impression

Walling

COTTO

Page 202

Modern take on a
much-loved material

PEBBLES

Page 246

Creating organic
decorative textures

DRY STONE

Page 210

Instant textural impact

RANDOM ASHLAR

Page 250

Working with vertical
and horizontal lines

FREEFORM®

Page 222

Integrating nature
with architecture

TRADITIONAL FORMAT

Page 264

A timeless architectural aesthetic

LINEAR

Page 236

Striking contemporary
architectural lines







Bluestone

VERSATILITY OFFERS POTENTIAL FOR EVERY PROJECT

Our Bluestone pavers are all volcanic stones that have formed and hardened over millions of years, making them extremely dense, hard-wearing and suitable for use in the most vigorous applications.

The range consists of a large variety of colours and finishes, offering a huge spectrum of choice. Our Heron Bluestone, for example, with its charcoal grey colour and exfoliated finish offers a rugged texture while our honed Bluestone provides a smooth, sleek finish that is ideal for use indoors.











Award winning project, Upside Down Akubra House by Alexander Symes, features our Pacific Bluestone flooring throughout, which seamlessly connects the indoors to out.

—









A premium offering from Italy,
our Torino Bluestone pavers have
a beautiful mottled finish.

—



For technical details, textures and to view our full range of Bluestone, visit ecooutdoor.com.au

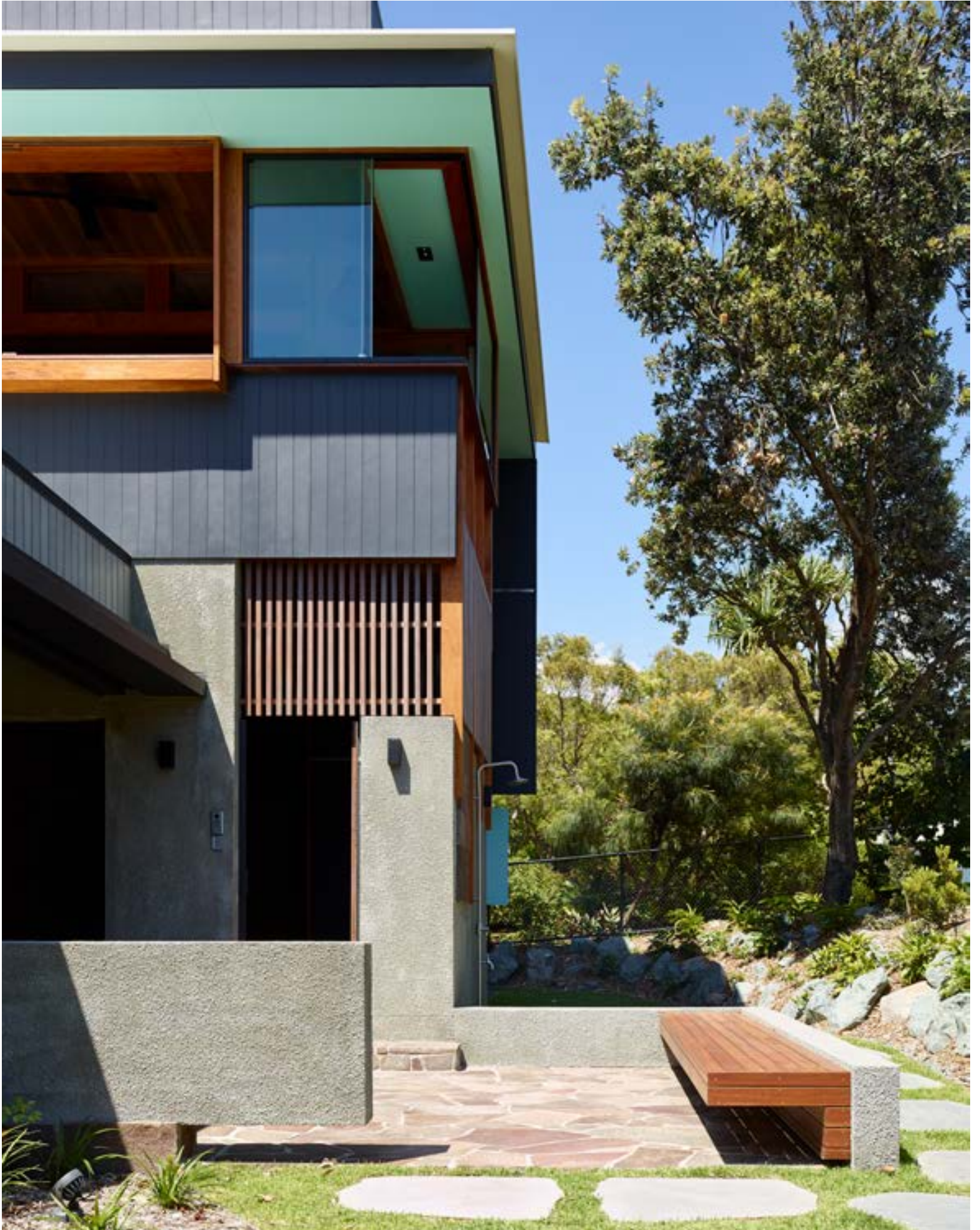


Bluestone, Stepper



Large Bluestone boulders are sliced to create organic steppers with a distinctly raw edge.

—



PROJECT CREDITS

- 01 b.e architecture, VIC
- 02 Natures Vision, NSW
- 03 Jeffries Studio, QLD
- 04 Jeffries Studio, QLD
- 05 Justin Humphrey Architect, QLD
- 06 Shaun Lockyer Architects, QLD
- 07 Paul Uhlmann Architects, QLD









Cobblestone

THE SENSE OF COMING HOME

Cobblestones effortlessly recreate an old-world look and charm. They offer that distinctive homecoming sense of arrival as one leaves the road and returns to the sanctuary of home. Traditionally used as a hard road surface, this style of paving has now been adopted and utilised as a core flooring alternative for residential and commercial projects alike.

Incorporating stone varieties such as Granite, Porphyry, gneiss and hardened Limestone, Cobblestones are an extremely dense and hard-wearing material. Typically produced in small sizes, these paving units are ideal for driveways and curved paths or can be used as an accent in conjunction with other flooring materials.





Our Raven Cobblestones, with their dark-grey make-up, are incredibly forgiving to marks and so are ideal for driveways and other high-traffic areas.

—





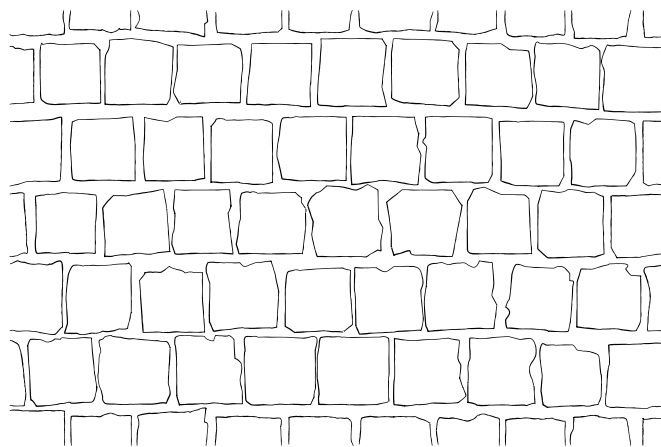








For a selection of high-resolution textures,
CAD plug ins and technical spec support –
visit ecooutdoor.com.au



For technical details, textures and to view our full
range of Cobblestones, visit ecooutdoor.com.au







PROJECT CREDITS

- 01 Amber Road Design, NSW
- 02 Paul Bangay, VIC
- 03 Paul Bangay, VIC
- 04 Shaun Lockyer Architects, QLD
- 05 Kennedy Nolan, VIC
- 06 Georgie Shepherd Interior, SA
- 07 Justin Humphrey Architect, QLD
- 08 Weir Phillips Architects, NSW
- 09 Rob Diaz Designs, California USA



For our full product range,
visit ecooutdoor.com.au



Cement

HISTORY AND ARTISAN TRADITION

Our hand-pressed cement tiles are crafted one at a time with the same traditional processes that were used 500 years ago. The boutique, hand-pressed tiles are the product of expert workmanship and eye for detail.

Natural mineral pigments, marble powder, fine sand and Portland cement are combined into individual moulds and then compacted manually. Once fully cured, each tile is then manually ground and buffed. This artisan process and natural mineral pigment give each tile a unique colour.



Shelly Beach Boat House in
Sydney uses Salt Water tiles to
create a bright, coastal feel.

—







For our full product range,
visit ecooutdoor.com.au



Cotto

TOUCHED BY HAND,
SLOW FLOORING

Our Cotto flooring range represents a return to the simplicity of using clay.
Raw, natural elements combine to form a genuine craft product.

The artisan approach encompasses a process where the clay (along with natural minerals) has simply been mixed with water and then worked into a mould by hand. Each season the kiln is blessed by a priest before work begins. This style of flooring follows a rich heritage and authenticity that has been used in architecture for centuries.

Each year our Antico range is
handcrafted and kiln fired by a small
Italian family manufacturer.

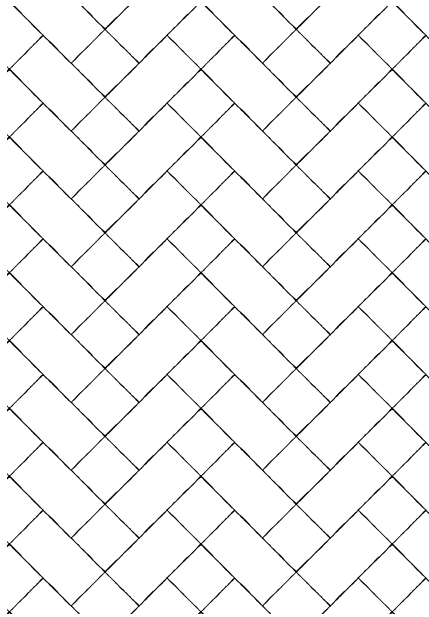
—



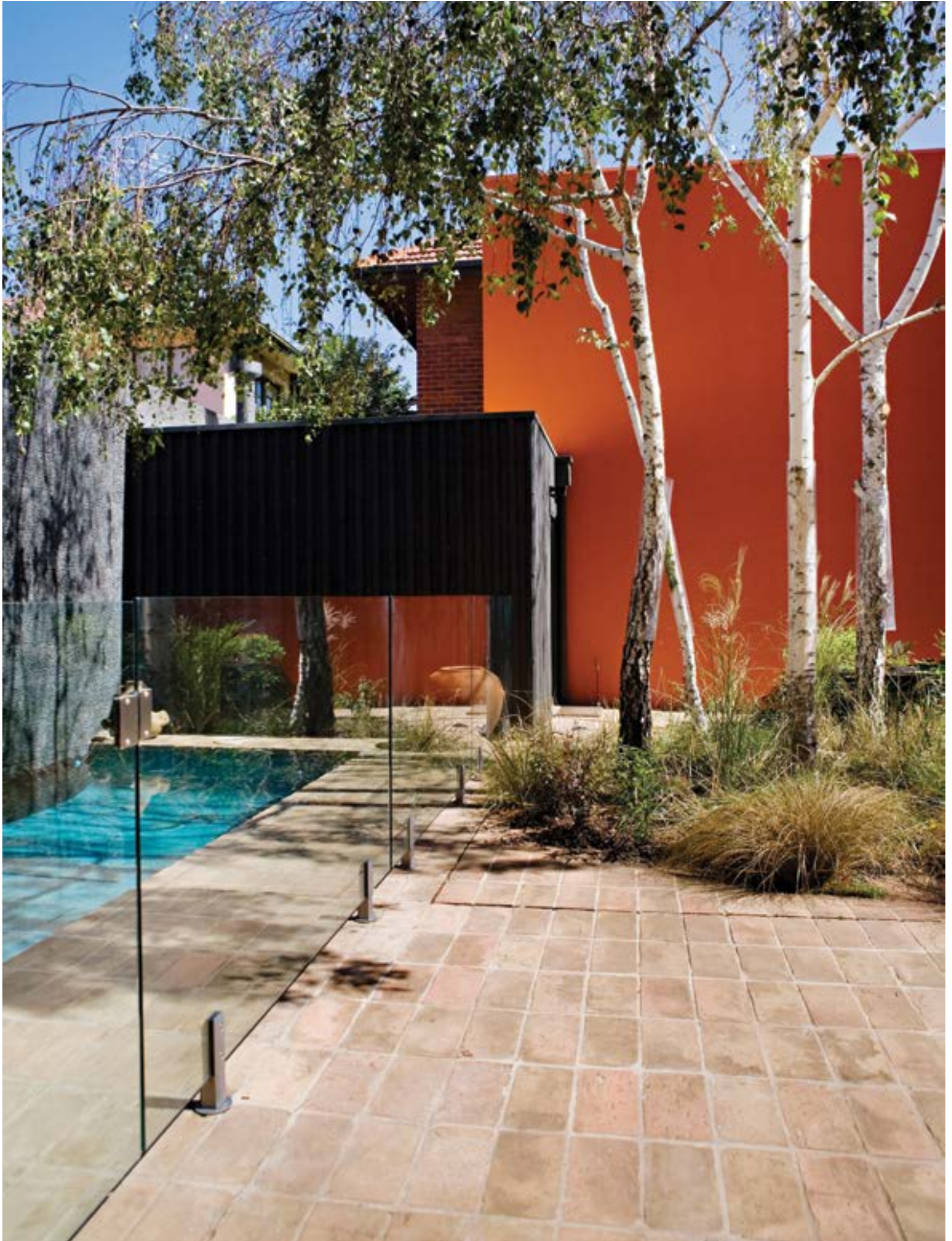
COTTO



Antico Nero



For technical details, textures and to
view our full range of Cotto flooring,
visit ecooutdoor.com.au













SJB utilise Cotto in a custom walling format to bring a unique and textured finish to this project.

PROJECT CREDITS

- 01 Eckersley Garden Architecture, VIC
- 02 Eckersley Garden Architecture, VIC
- 03 Hecker Guthrie, VIC



For our full product range,
visit ecooutdoor.com.au





Crazy Paving

ORGANIC MOVEMENT THROUGH IRREGULAR SHAPES

Crazy Paving is an historical flooring method that has its origins in Ancient Rome. In Crazy Paving, irregular stone pieces are laid randomly to create a seamless, organic flooring surface.

The texture and natural colour and size variations make Crazy Paving ideal for courtyards, garden paving, pool surrounds, pathways and curved designs.

The format allows for movement in a flooring aesthetic that is also a perfect means to visually break open a space.

Our Crazy Paving stones are dense and therefore incredibly durable; have natural variation in colour and have been processed to ensure a relatively consistent dimensional accuracy.

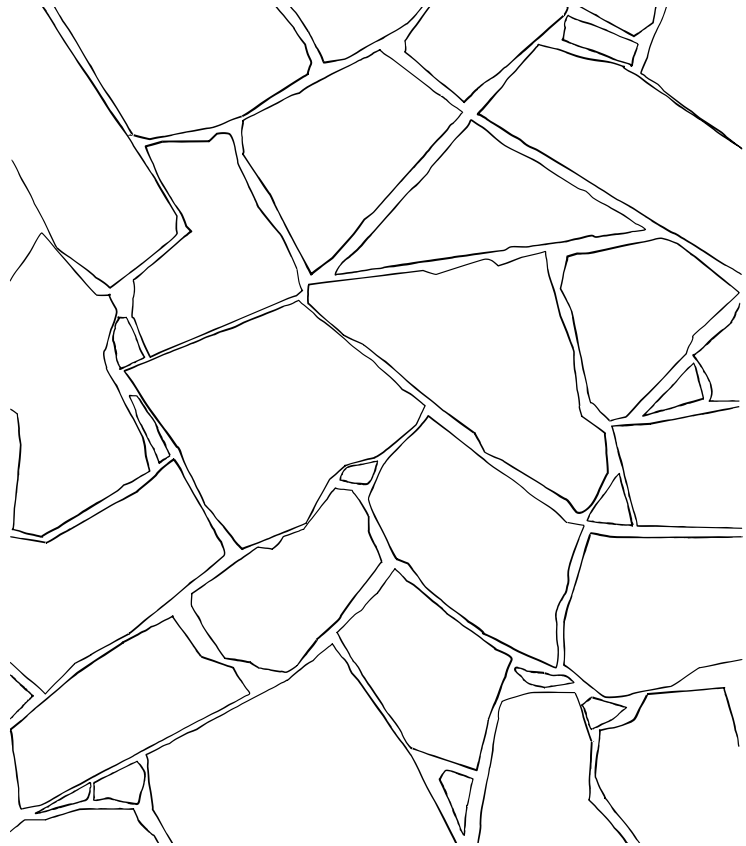












For technical details, textures and to view our full range of Crazy Paving flooring, visit ecooutdoor.com.au









Crazy Paving is an ideal solution for both
outdoor and indoor applications.

—









PROJECT CREDITS

- 01 Bower Architecture, VIC
- 02 Keen Architecture, WA
- 03 MRTN Architects, QLD
- 04 Shaun Lockyer Architects, QLD
- 05 Naked Architecture, WA
- 06 Akin Creative, NSW
- 07 Eckersley Garden Architecture, VIC
- 08 Studio Esteta, VIC
- 09 Studio Esteta, VIC
- 10 Bower Architecture, VIC



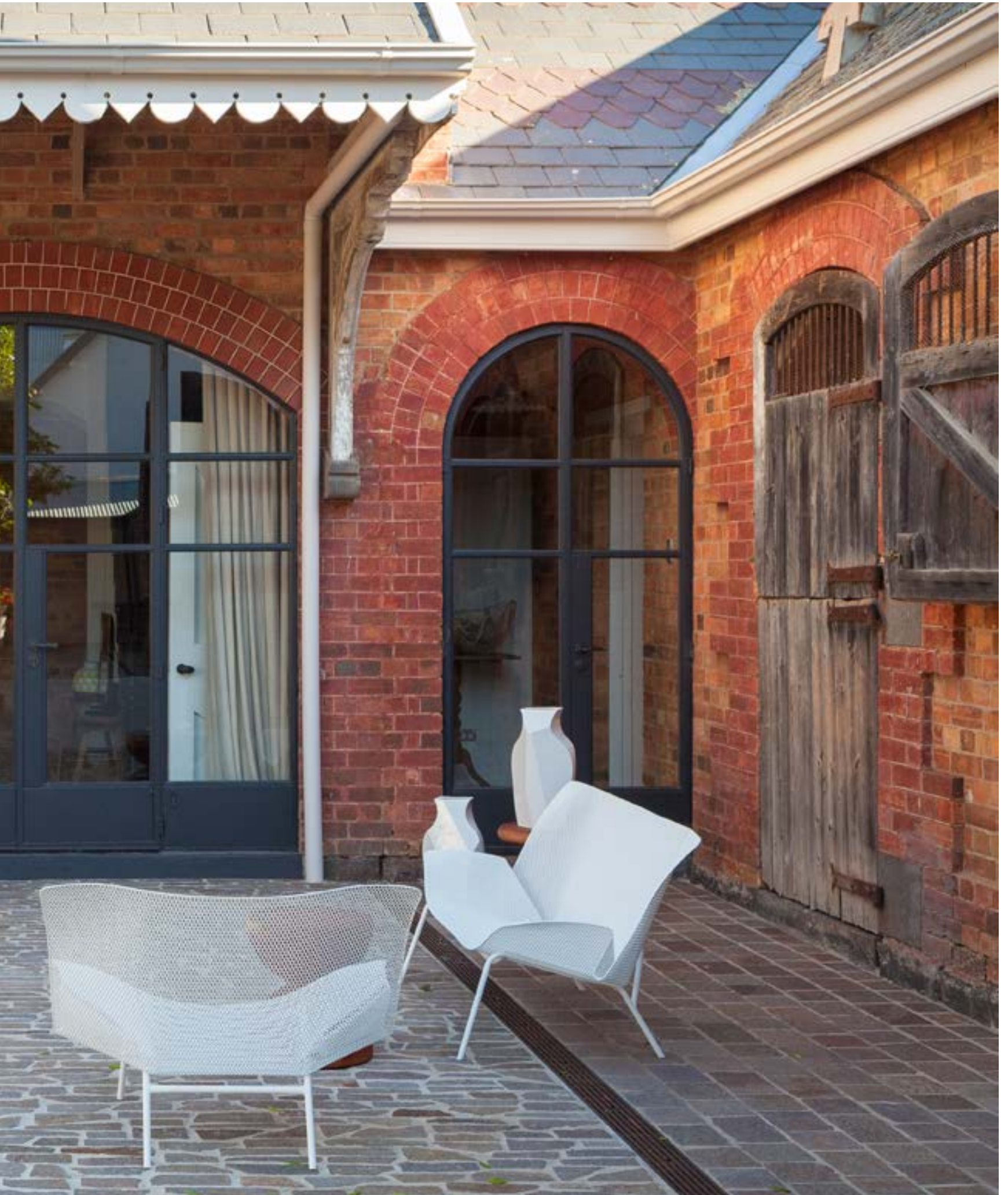
Filetti

TEXTURE, TONES & TRACTION

Filetti refers to a unique paving format utilising long, thin pieces of stone that have been installed in a linear fashion. Having drawn inspiration from alpine areas in northern Europe, this style of paving works extremely well in many forms of contemporary architecture.

Filetti is best suited to stone types that have been naturally split, such as Porphyry, Endicott® and Luca. All of these materials are extremely dense and hard-wearing and so are ideal for high-traffic flooring areas such as driveways or curved paths.













For a selection of high-resolution textures,
CAD plug ins and technical spec support –
visit ecooutdoor.com.au

PROJECT CREDITS

- 01 Sonja Kritzler Design, NSW
- 02 Kings Landscaping, VIC
- 03 Michael Cooke Garden Designs, NSW
- 04 Secret Gardens, NSW



For our full product range,
visit ecooutdoor.com.au







Granite

WORKING TOGETHER TO ACHIEVE A BESPOKE IMPRESSION

Granite is available in a large variety of sizes, formats and surface textures. From a split finish Granite Cobblestone driveway to a sleek honed tile indoors; the options are endless.

Our core Granite range offers a high level of customisation which is particularly good for commercial projects where a unique look is desired.

Being an igneous rock, Granite is extremely dense and hard-wearing, and the slightly mottled fleck of the Granite makes it very forgiving in terms of staining and everyday wear and tear.





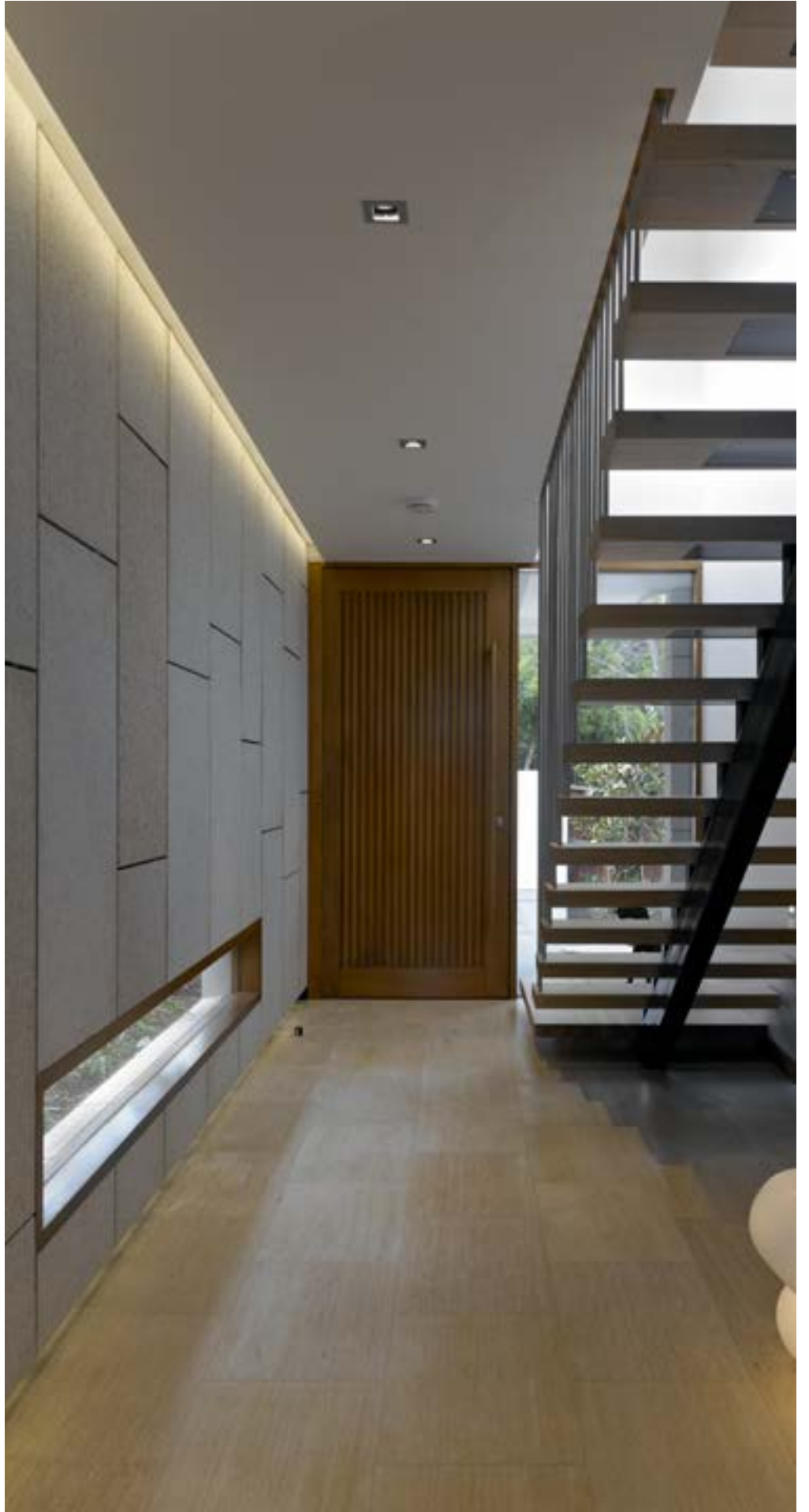
GRANITE







K2LD Architects use tortoise Granite as a walling finish both internally and externally in this project.



GRANITE





Granite is extremely dense and hard-wearing, making it ideal for a broad spectrum of outdoor use including pool surrounds.

—









Ideal for commercial use.

—

Granite is an ideal material for use in commercial projects due to its durability and slip resistance.

PROJECT CREDITS

- 01 b.e. architecture, VIC
- 02 Squillace, NSW
- 03 Paul Bangay, VIC
- 04 ASPECT Studios, NSW
- 05 Bruce Stafford Architects,
Secret Gardens & Earthtone, NSW
- 06 Smart Pools, NSW
- 07 Good Manors, NSW
- 08 Good Manors, NSW
- 09 Stonnington Council Armadale, WA



For our full product range,
visit ecooutdoor.com.au





Limestone

NATURAL TIMELESS APPEAL

Limestone is a form of sedimentary rock that is a very strong stone material suitable for many applications both internally and externally.

Each of our tiles comes in a tumbled finish to enhance the inherent characteristics of the natural stone. This aged appearance provides a real sense of history and permanency. Even newly-laid stones feel as if they've been there forever.

Most of our Limestone range has subtle colour movement and tonal change and particular shades can be pulled out and coordinated with the associated architecture with ease.

Many of our tiles come in a tumbled
finish to enhance the inherent
characteristics of the natural stone.

—







LIMESTONE





The texture and density of Limestone makes it ideal for many outdoor surfaces.

—

LIMESTONE







A return to provincial flooring.

—







PROJECT CREDITS

- 01 Tom Mark Henry Interior Design, NSW
- 02 Eckersley Garden Architecture, VIC
- 03 Georgie Shepherd Interior, SA
- 04 Byron Bay Beach Abode, NSW
- 05 Sketch Architecture, NSW
- 06 Hugh Burnett Landscape Architect, NSW
- 07 Alison Dodds Architect, VIC
- 08 Tim Wright Architect in collaboration
with Myles Baldwin, NSW
- 09 Corben Architects, NSW
- 10 Paul Uhlmann Architects, QLD



For our full product range,
visit ecooutdoor.com.au







Pebbles

CREATING ORGANIC, DECORATIVE TEXTURES

Pebbles have been used in building and landscaping for centuries and our range presents an extremely versatile material for an array of flooring needs.

Our extensive range of colours and sizes makes them a great natural stone choice for a wide scope of applications. Our natural stone Pebbles are low-maintenance and the nature of their sourcing is inherently eco-friendly, with varied sizes available for ease of specification.

Clean and washed for decorative topping, both internally and externally, our Pebbles present an excellent choice for outdoor water features, pathways, gardens and edge detailing.

PEBBLES



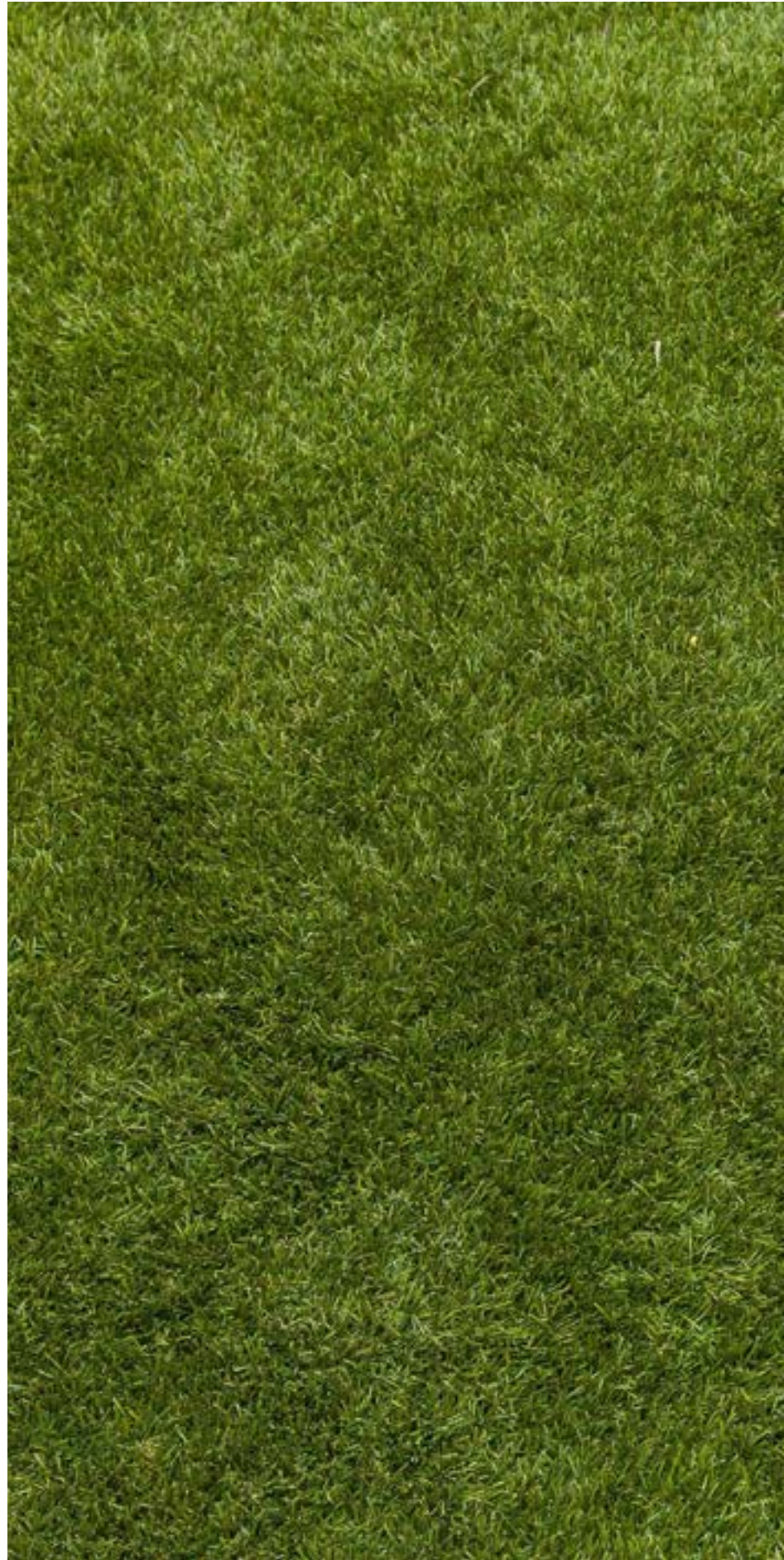


PROJECT CREDITS

- 01 Eckersley Garden Architecture, VIC
- 02 Caldesign, NSW
- 03 The Small Garden, QLD



For details on our full range of
pebbles and technical information,
visit ecooutdoor.com.au







Porphyry

UNRIVALLED DURABILITY

A stone hailed for centuries due to its durability and aesthetic appeal, it is a favoured material of iconic architects such as Harry Seidler and Renzo Piano who continue to utilise it to this day.

Porphyry has a superior structural matrix for exceptional strength. This, coupled with the irregular-shaped pieces we offer, make Porphyry ideal for Cobblestones, Filetti and Crazy Paving flooring options. Porphyry is not typically quarried in large blocks, but instead sheers off and has a natural split finish which is inherently non-slip, making it an ideal product for commercial applications.

Eco Outdoor's Porphyry range features varying colours of red, grey and gold that differ from piece to piece and therefore are extremely forgiving and require minimal maintenance.





PORPHYRY









Ideal for high-traffic areas.

—

Porphyry, with its non-slip properties and durability, is ideal for use on a pathway or other high-traffic areas.



PROJECT CREDITS

- 01 Tobias Partners, NSW
- 02 Wild About Gardens, NSW
- 03 Kings Landscaping, VIC
- 04 Paul Bangay, VIC
- 05 Kings Landscaping, VIC



For our full product range,
visit ecooutdoor.com.au



Sandstone

GENTLE & TACTILE UNDERFOOT

A timeless natural stone, Sandstone has been used around the globe for centuries. Our Sandstone flooring complements both traditional and modern architecture and is available in both flooring and walling options to allow for consistency in colour throughout a project.

The sedimentary layers of Sandstone pavers present a unique and varied colour profile which can be very forgiving as the natural material ages and adds to the individual personality of each paver.









SANDSTONE





SANDSTONE









PROJECT CREDITS

- 01 Polly Harbison Design, NSW
- 02 Artscapes, NSW
- 03 Polly Harbison Design, NSW
- 04 Artscapes, NSW
- 05 Polly Harbison Design, NSW
- 06 Artscapes, NSW
- 07 Artscapes, NSW
- 08 Polly Harbison Design, NSW



For our full product range,
visit ecooutdoor.com.au



Split Stone

WORKING WITH THE STRATIFICATION LAYERS

For our Split Stone range of products, we follow the stratification layers and work with the natural formation of the stone. The material is hand-split, unearthing the terra history of each individual stone showing the appeal of the raw material.

Following the stratification layer brings greater strength through compaction as well as a flat, non-slip, surface - making it ideal for use around pools and on pathways or driveways.

Our Split Stone range presents an economical natural stone option that is also easy to maintain, making it a great choice for both commercial and residential projects alike.













For a selection of high-resolution textures,
CAD plug ins and technical spec support –
visit ecooutdoor.com.au



The thin profile of Abyss Split Stone means
it can easily transition from inside to out.



PROJECT CREDITS

- 01 Preston Lane, VIC
- 02 SJB & Tess Regan Design, NSW
- 03 Winwood Mckenzie, VIC
- 04 Austin Maynard Architects, VIC
- 05 SJB & Tess Regan Design, NSW
- 06 Kate Seddon Landscape Designs, VIC
- 07 Shaun Lockyer Architects, QLD
- 08 Shaun Lockyer Architects, QLD
- 09 SJB in collaboration with William Dangar, NSW



For our full product range,
visit ecooutdoor.com.au







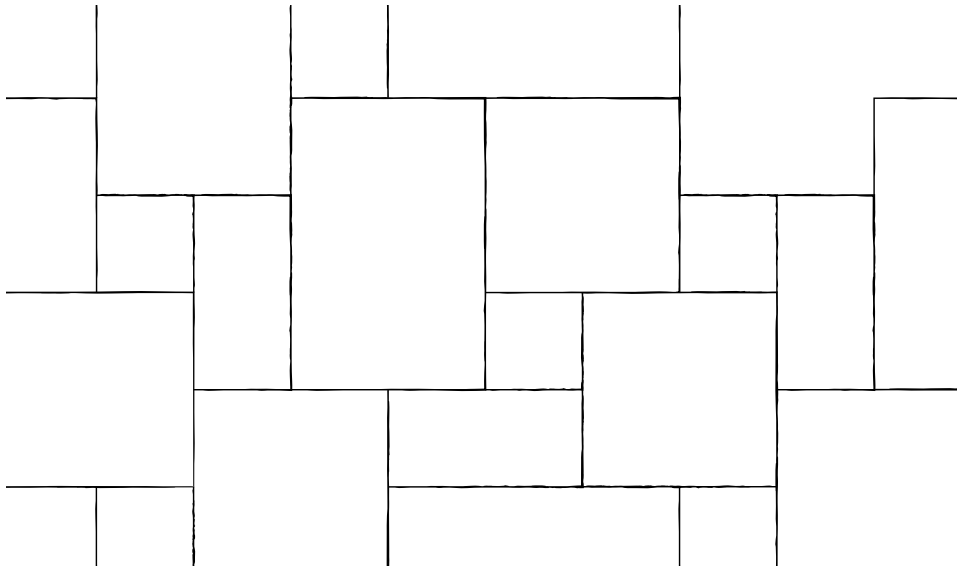
Travertine

PROVINCIAL & ROMANTIC APPEAL

Travertine is a natural stone that offers a striking patina like no other. Formed from sedimentary rock, the stone can be used to complete a contemporary aesthetic or add age and texture to a traditional, classic look.

Travertine has been used in buildings for centuries, such as the Colosseum, and is still sought after in modern architecture - with the Getty Center in California being one of the most notable contemporary designs to use the material.

TRAVERTINE



For technical information including textures and formats, refer to ecooutdoor.com.au



TRAVERTINE











It's the natural patina of Travertine stones
that makes them truly beautiful.

PROJECT CREDITS

- 01 Artscapes, NSW
- 02 Richards and Spence, QLD
- 03 Shaun Lockyer Architects, QLD
- 04 Landart, NSW



For our full product range,
visit ecooutdoor.com.au





Cotto

MODERN TAKE ON A MUCH-LOVED MATERIAL

Our Cotto tiles and bricks offer a true sense of history and authentic craftsmanship.

Cotto Zellige and Glazed Tiles are hand cut for precision by skilled artisans and offer a unique option for decorative walling accents. Featuring beautiful, natural variations in tactility and colour, these tiles feature a wonderfully unique translucent glaze.

Cotto Bricks offer a more textured and tactile finish. Hand-made from clay and kiln-fired, no two bricks are the same, creating an authentic, aged finish.

COTTO



Cotto Brick, Nero







Zellige, Seafoam

PROJECT CREDITS

- 01 Studio Goss for Armadillo & Co
flagship showroom, NSW
- 02 Bower Architecture, VIC



For our full product range,
visit ecooutdoor.com.au









Dry Stone

INSTANT TEXTURAL IMPACT

With historic roots in Scotland and Ireland, Dry Stone walling can now be found throughout the world and is seen as a core finish used in modern architecture.

Dry Stone invites a real collaboration between the architect and the craftsman and working with the stone to achieve the desired look means that each project takes on an individual feel.

Dry stone works best when corner units and capping pieces are used to create an authentic, solid look. All of our stone pieces are split on the face and sawn on the back, allowing for easy application.

The blending of raw material
with modern architecture.

—





For a selection of high-resolution textures, CAD plug ins
and technical spec support – visit ecoor.com.au





Finishing detail is key.

—







PROJECT CREDITS

- 01 Mark Winter Constructions, QLD
- 02 Matt Gibson Architecture + Design, VIC
- 03 Serenity Design, NSW
- 04 Banham Architects, WA
- 05 Aspect Architecture, QLD
- 06 Shaun Lockyer Architects, QLD
- 07 Fiona Austin Design, VIC



Visit the Eco Outdoor website for high-resolution textures and other technical information.





Calabor



Howqua®



Crackenback®



Korora



Wamberal



Bodega



Bokara



Freeform®

INTEGRATING NATURE WITH ARCHITECTURE

Eco Outdoor's range of Freeform® walling provides a rugged, organic and textured walling solution.

Working with the natural irregularities of the stone is reminiscent of traditional stone masonry and by adjusting the grout colour and spacing size, you can dramatically alter the design impact.

Corner finishing details are the key to ensuring an authentic result. All stone pieces are split on the surface and sawn on the back allowing for easy application.





A rugged and
natural offering.

—



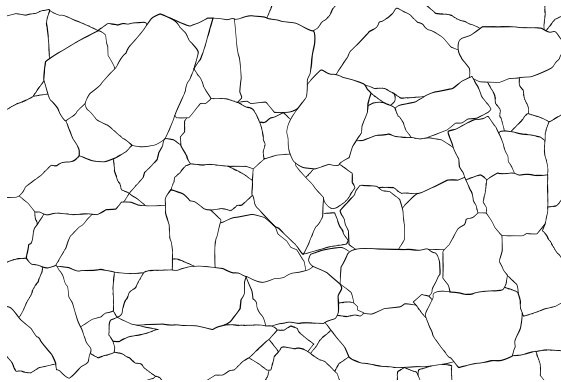








Our website is home to product formats, finishes and sizes as well as 3D textures, ready for you to download.









Organic and textured.

—

PROJECT CREDITS

- 01 KP Architects, QLD
- 02 Shaun Lockyer Architects, QLD
- 03 KP Architects, QLD
- 04 KP Architects, QLD
- 05 Outdoor Establishments, NSW
- 06 Atelier Andy Carson, NSW







Linear

STRIKING CONTEMPORARY ARCHITECTURAL LINES

Echoing the style of Peter Zumthor's iconic design of Therme Vais Spa, our Linear Walling range is a strip walling that reinforces the lineal architectural narrative. Comprising of Split Stone, Limestone and Sandstone, this format represents a modern way of integrating natural stone into a unique design project.

Its streamlined appearance creates a modern backdrop that is suitable for internal and external applications and its thin profile makes Linear Walling an ideal option to be used on vertical surfaces. We use sawn and split in combination together to create a distinctive textured façade.



Natural colour formations within the stone are highlighted through the natural split or sawn surface.

—







For our full product range,
visit ecoor.com.au







PROJECT CREDITS

- 01 Zyme Studios, Santa Monica, California
- 02 Lexis Design, NSW
- 03 Chris Clout Design, QLD
- 04 Papesch Architecture, NSW
- 05 Shaun Lockyer Architects, QLD



To view our full range of Linear Walling, visit ecooutdoor.com.au

PEBBLES



Eden



Bendigo



Anvil



Sahara



Pilbra



For our full product range,
visit ecooutdoor.com.au

Pebbles

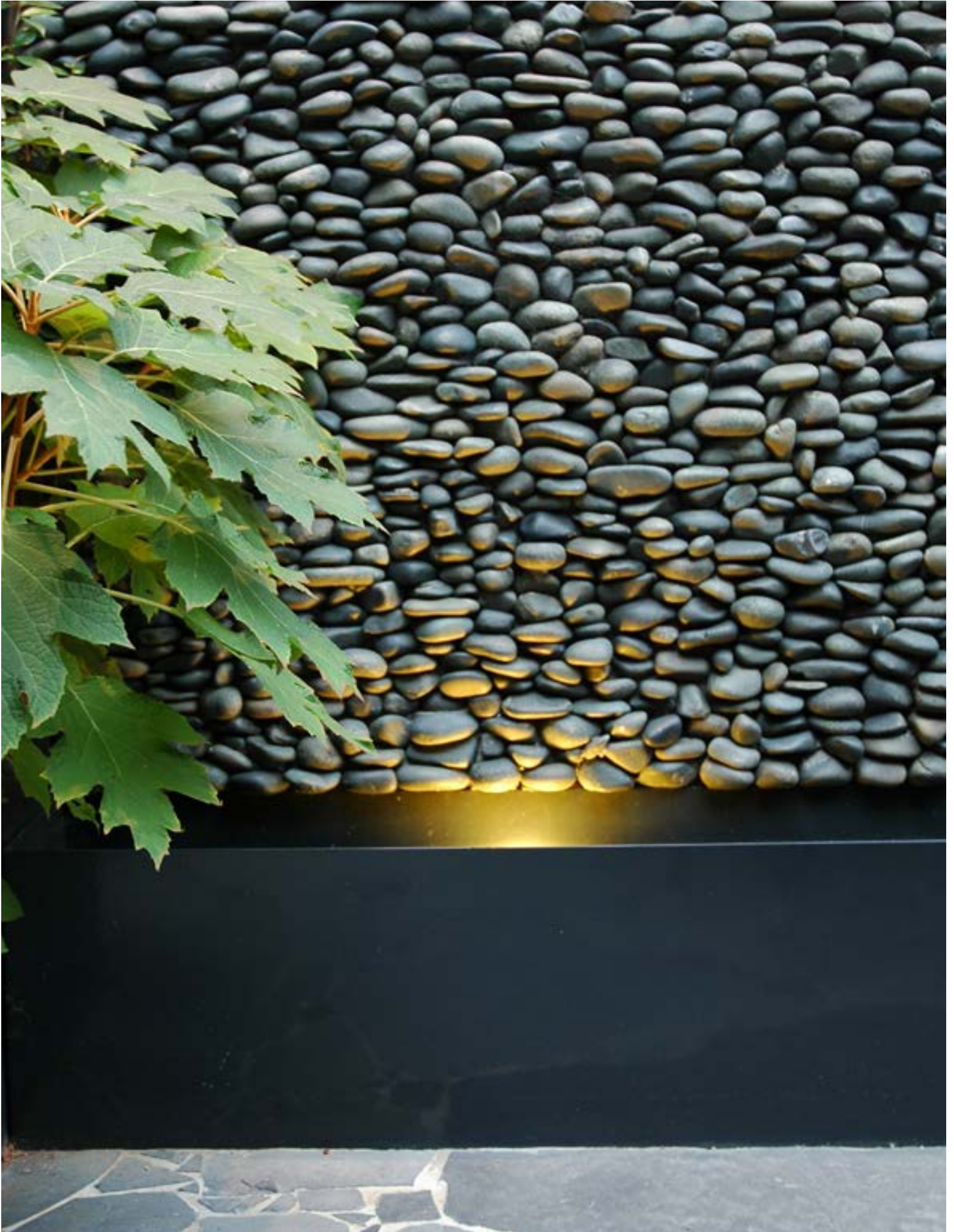
CREATING ORGANIC, DECORATIVE TEXTURES

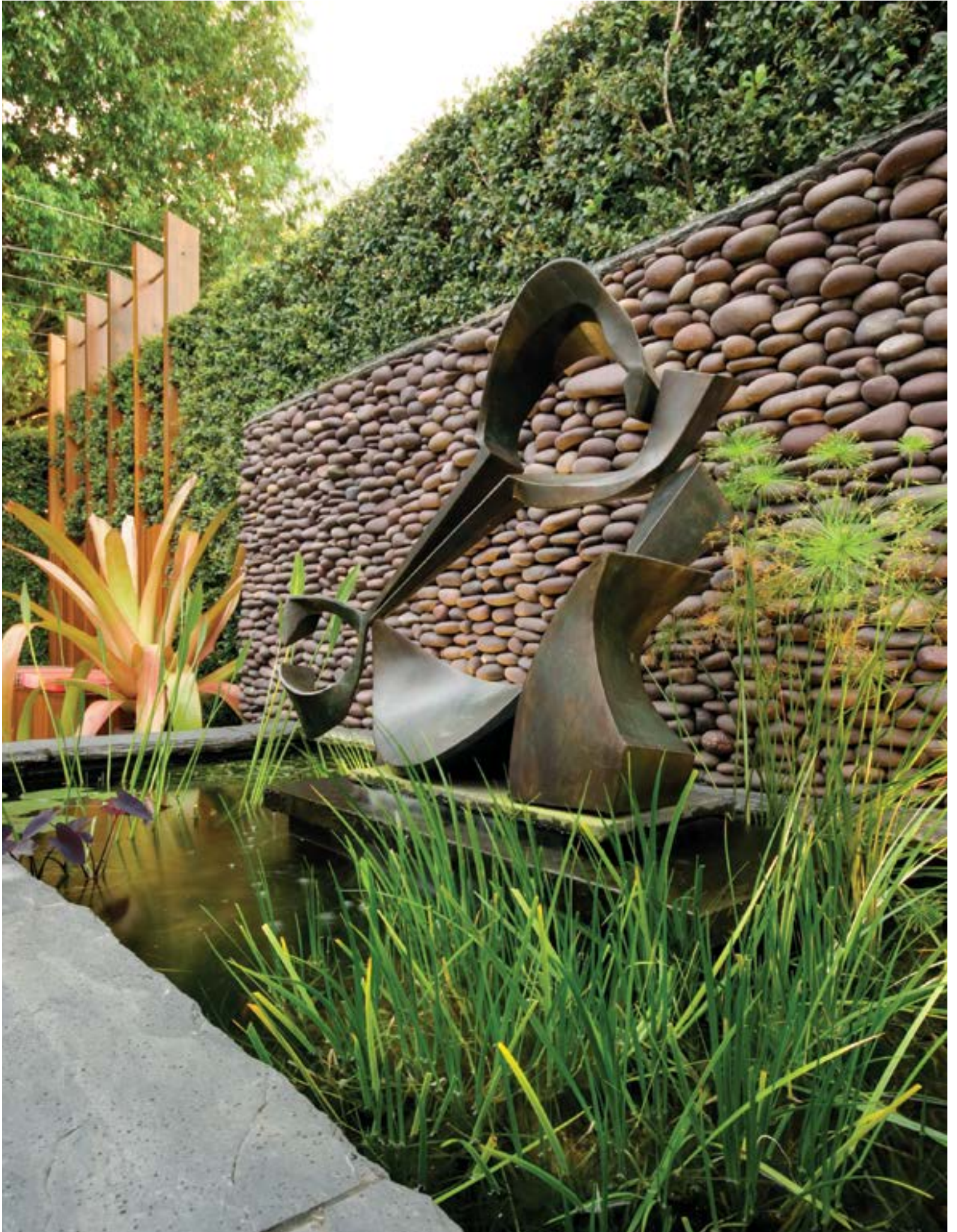
Pebbles have been used in building and landscaping for centuries and our range presents an extremely versatile material for stone walls, feature walls and other garden ideas. Our extensive range of colours and sizes makes them a great natural stone choice for a wide scope of applications.

Our natural stone Pebbles are low-maintenance and the nature of their sourcing is inherently eco-friendly.

Clean and washed for decorative topping, both internally and externally, our Pebbles present an excellent choice for outdoor water features, retaining walls, pool walls, feature walls, fire places and more.

PEBBLES







Random Ashlar

WORKING WITH VERTICAL AND HORIZONTAL LINES

The earthy organic texture of Random Ashlar brings warmth and textural relief to modern architecture. It is hard and durable, making it suitable for internal and external applications.

Random Ashlar walling can be installed using varying techniques to dramatically alter the look. For example, by adjusting the grout joint colour and spacing size and recessing the grout, the structure and form of the stone will be emphasised for a bolder design statement.

Eco Outdoor provides capping and corner finishing details for all of the Random Ashlar range and these are key to ensuring an authentic result.

Capping and corner finishing detail is the key to ensuring an authentic result.

—

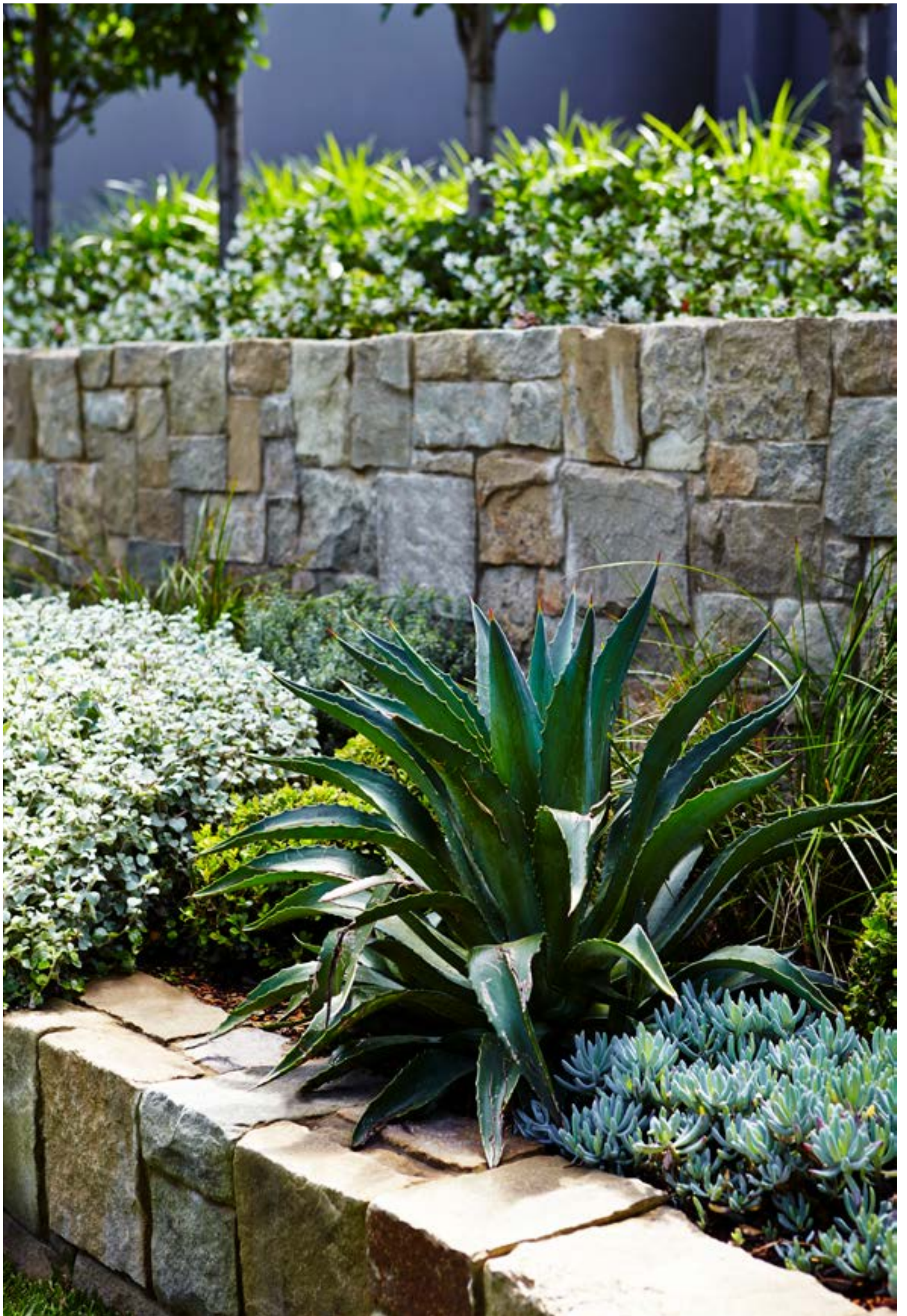






For a selection of high-resolution textures,
CAD plug-ins and technical spec support –
visit ecooutdoor.com.au

Coolum / 04
Clancy® / 05



The light tones within this stone wall cladding adds brightness and texture to this outdoor space.

—













PROJECT CREDITS

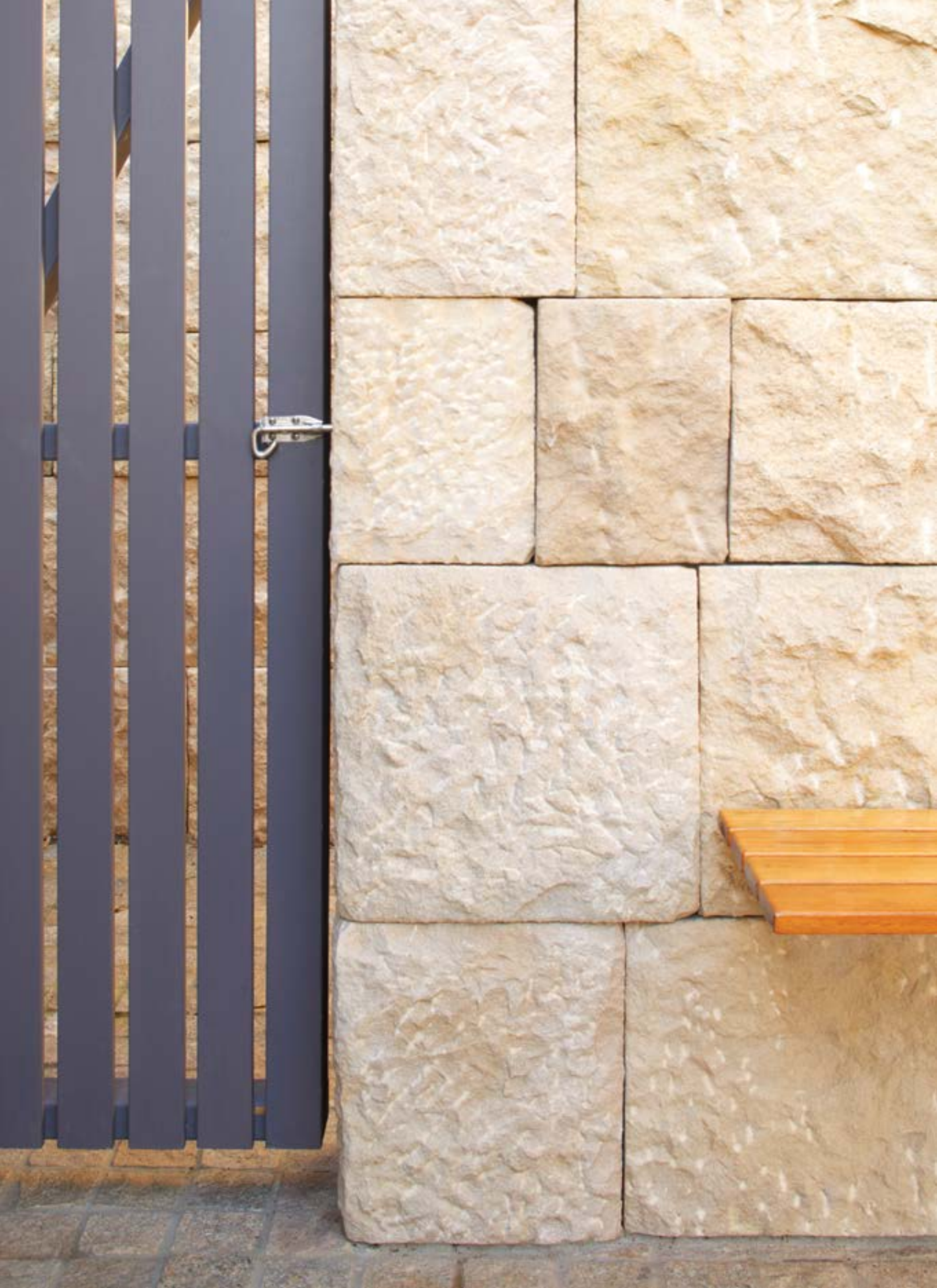
- 01 Outdoor Establishments, NSW
- 02 Exact Stone, NSW
- 03 Thomas Hammel, Beebe Constructions,
I've Got Time Landscapes, NSW
- 04 Kings Landscaping, VIC
- 05 Outdoor Establishments, NSW
- 06 Outset Design, SA
- 07 Design It Landscapes, NSW
- 08 Shaun Lockyer Architects, QLD



To view our full range of Random Ashlar, visit ecooutdoor.com.au







Traditional Format

A TIMELESS ARCHITECTURAL AESTHETIC

Traditional Format walling is a timeless and sophisticated format that will never date. It's been used in buildings for years and has an ageless aesthetic appeal.

With natural warmth and subtle colour variation, these stone walling options help provide atmosphere to any space. Random lengths develop variety in arrangement while our sibling flooring range supports a sense of design continuity.

We believe that finishing is key for natural stone to work effectively in a design and our L-shaped corner units offer a sense of structural depth and form that cannot be achieved with a miter join.













Beautiful natural colour variation is present throughout our Barrimah[®] walling and the distressed finish perfectly highlights the natural beauty of the stone.

—



PROJECT CREDITS

- 01 Annabelle Chapman, NSW
- 02 Fig Landscapes, NSW
- 03 Tim Ditchfield Architects, QLD
- 04 Sonja Kritzler Designs, NSW
- 05 Eb Interiors, NSW





Say hello.

VIC MELBOURNE

422 Burnley Street Richmond
VIC 3121 Australia

NSW SYDNEY

7 Danks Street Waterloo
NSW 2017 Australia

QLD BRISBANE

9 Wandoo Street Fortitude Valley
QLD 4006 Australia

SA ADELAIDE

13 College Road Kent Town
SA 5067 Australia

WA PERTH

269-271 Stirling Highway Claremont
WA 6010 Australia

T. 1300 13 14 13



ecooutdoor.com.au



ECO OUTDOOR®
FLOORING • WALLING • FURNITURE

MELBOURNE SYDNEY BRISBANE ADELAIDE PERTH
T. 1300 13 14 13 ECOOUTDOOR.COM.AU