



USAGE AREA:

Elevated installations

A typical utilisation of the SGC EL application is to provide a raised yet stable foundation to the underside of subfloor bearers/framing. Excellent for sloping ground or where flooding is possible.

The **SGC Groundscrew** is generally fully installed into the ground with roughly 150 mm protruding, to provide full load-bearing capacity.

SGC EL extension application perfectly fits the SGC Groundscrew for a strong, directly bolted connection with 4 M12 bolts/washers. When fitted the extensions efficiently heightens the installation level above ground and are used with or without diagonal bracing depending on load requirements. The SGC EL extensions are available in fixed lengths - 500/1000/1500/2000 mm.



For house foundations, transportable buildings and decks in sloped areas, or poor soil where it would be very expensive to dig out and use concrete slabs etc.



SGC EL is well suited where floods are possible, or where damage or disturbing of the ground is restricted.



USAGE AREA:

Extendable Groundscrews

The **SG EX** extendable Groundscrew is specially designed for extra deep embedment.

The **SG EX Groundscrew** can be extended indefinitely underground to secure the needed load-bearing capacity. The product consists of three different parts.

SG EX S is the base part and the first stage to get embedded. When sufficient depth is reached the next stage is added.

SG EX B is the extension part and adds 1000 mm to the total length. With a welded steel sleeve, the extension fits securely on top of the base part and allows for continued embedding. More extensions can be added as the screw goes deeper.

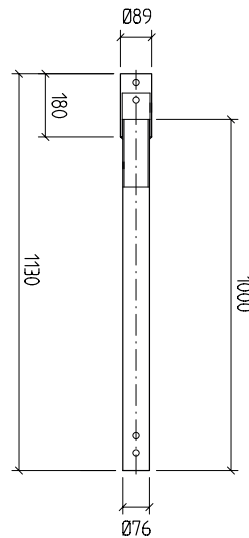
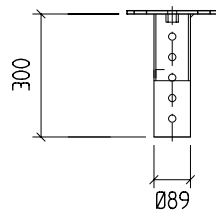
SG EX H is the final part with a sleeve fitted to a round adaptor flange for flexible installations. When the appropriate depth is reached and no more extensions are needed, the SG EX is finished with this part.



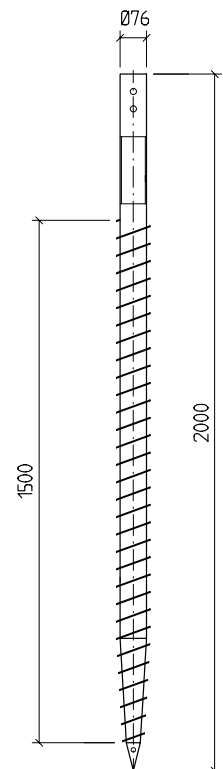
SG EX H



SG EX B



SG EX S



SG EX provides high compressive load capacity and can be used to support concrete slabs or raft reinforcement among other things.