



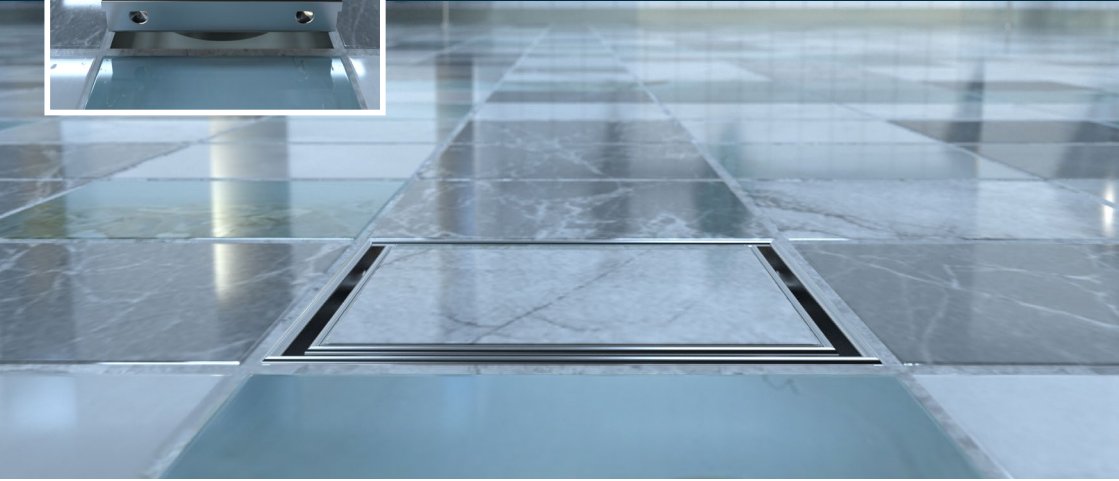
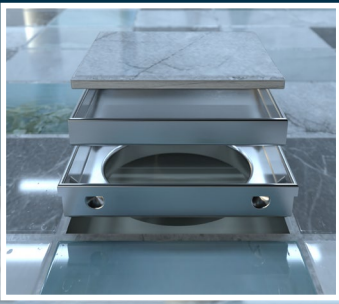
LINEAR DRAIN SYSTEM

The Stainless Steel Advantage

3monkeez[®]
innovate. create. deliver.



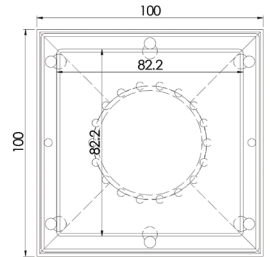
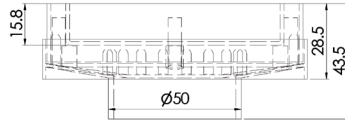
Point Drains



100mm Square Tile Insert Point Drain

FW-100TI-50 (50mm outlet)

- Slimline for easy installation
- Removable tray

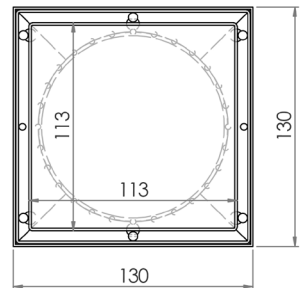
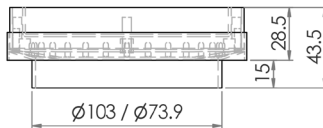


130mm Square Tile Insert Point Drain

FW-130TI (103.1mm outlet)

FW-130TI-80 (73.9mm outlet)

- Slimline for easy installation
- Removable tray

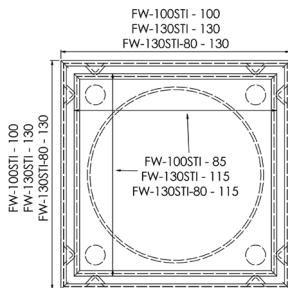
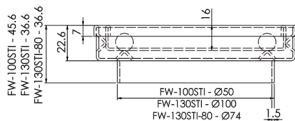




Stainless Steel Tile Insert Point Drains

- FW-100STI** (100mm Square - 50mm Outlet)
- FW-130STI** (130mm Square - 100mm Outlet)
- FW-130STI-80** (130mm Square - 74mm Outlet)

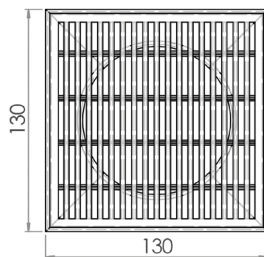
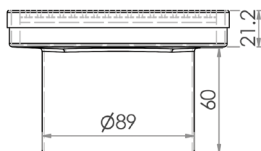
- Slimline for easy installation
- 1.5mm 304 grade stainless steel
- Removable tray



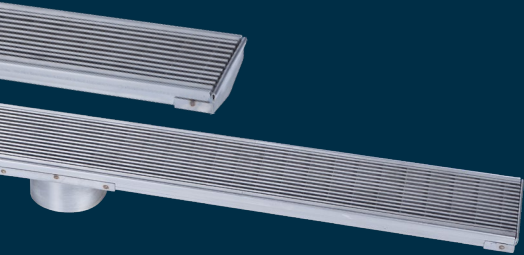
130mm Wedge Wire Point Drain

FW-130WWI

- Slimline for easy installation
- Removable grate
- G200 profile grate
- 89mm spigot
- 316 grade stainless steel
- Custom sizes available on request - lead times apply



Channel and Wedge Wire Grate



Channel and Tile Insert



IN2GR8®

For a design that will compliment your next bathroom, courtyard, or outdoor project, 3monkeez® range of In2Gr8® grates and drains are the perfect option. The goal of our wide range of linear and point drains is in the name, to integrate seamlessly and offer a fuss-free solution that will suit any application. All our In2Gr8® products are available with your choice of wedge wire or tile insert; to provide style, functionality and practicality. Constructed from full stainless steel, this range will provide a lifetime of satisfaction, free from scratches and resistant to even the toughest environments.

Available in kit form or pre-assembled to your specifications we can also assure ease of purchase and installation. Rigorously tested, our channel & grate products meet all industry standards, for a quality drainage solution that is attractive and functional.

1. End Caps

2. Outlet Spigot

3. Channel

4. Wedge Wire Grate or Tile Insert

5. Joining Strip

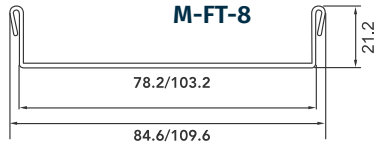
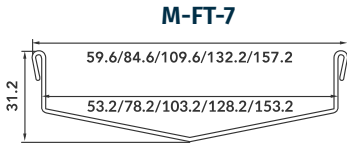
6. Fixed and Removable Strainers

7. Corners



Manufactured using 316 grade stainless steel. Available

Profiles Available



M-FT-7 Profiles – Wedge Wire Grate

Outlet (mm)	G200 50mm	G200 75mm	G200 100mm	G300 125mm	G300 150mm
38	X	X	X		
50		X	X		
76			X		
89			X	X	X

M-FT-8 Profiles – Wedge Wire Grate

Outlet (mm)	G200 75mm	G200 100mm
38	X	X
50	X	X
76		X
89		X

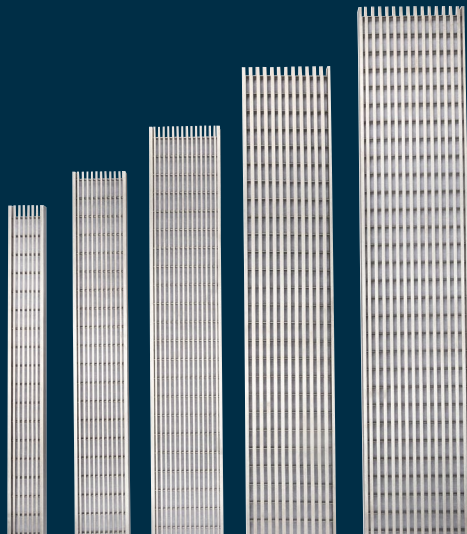
M-FT-7 Profiles – Tile Insert

Outlet (mm)	75mm	100mm
38	X	X
50	X	X
76		X
89		X

M-FT-8 Profiles – Tile Insert

Outlet (mm)	75mm	100mm
38	X	X
50	X	X
76		X
89		X

Available in kit form or customised to your requirements.



G200 50mm G200 75mm G200 100mm G300 125mm G300 150mm

- Manufactured using 316 grade stainless steel
- Available in kit form or pre-fabricated to your specifications
- Wedge wire or tile insert
- Kit form range from 900mm - 3000mm
- Joining strips for longer lengths
- Corners available for change of direction – 45 degree or 90 degree
- G200 – 50mm, 75mm, 100mm widths
- G300 – 125mm and 150mm widths straight runs only
- Outlet sizes – 38mm, 50mm, 76mm and 89mm
- Kit form includes a hole saw and sealant



Wedge Wire



Tile Insert

in kit form or pre-fabricated to your requirements.



LINEAR DRAIN SYSTEM

3monkeez[®]
innovate. create. deliver.

NSW 02 9627 6111

VIC 03 9357 6562

QLD 07 3881 0322

WA 08 6305 0681

SA 0408 299 443

ACT 0408 446 961

www.3monkeez.com.au

sales@3monkeez.com.au