

The image shows a modern architectural structure with a white, grid-like facade on the left. The building has a flat roof and is supported by several columns. In the foreground, there is a large, open courtyard covered in light-colored gravel. Two people are standing in the middle of the courtyard, looking towards the building. The background features a line of trees and a clear blue sky with some light clouds. A semi-transparent white box is overlaid on the center of the image, containing the text 'LUCID METAL' and 'Architectural Visualisation'.

LUCID METAL

Architectural Visualisation







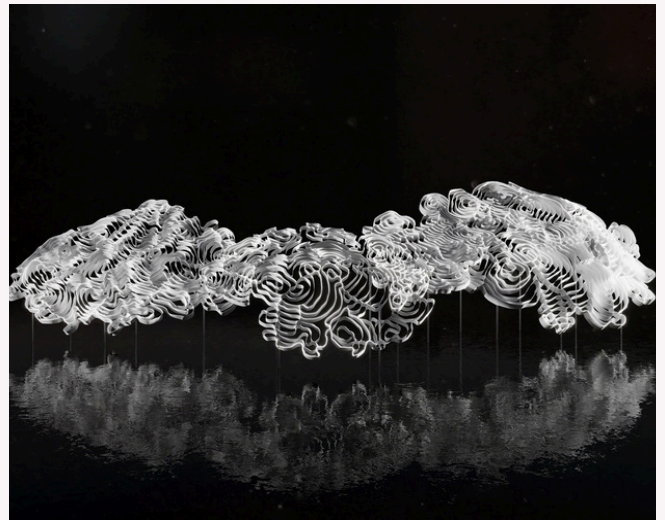
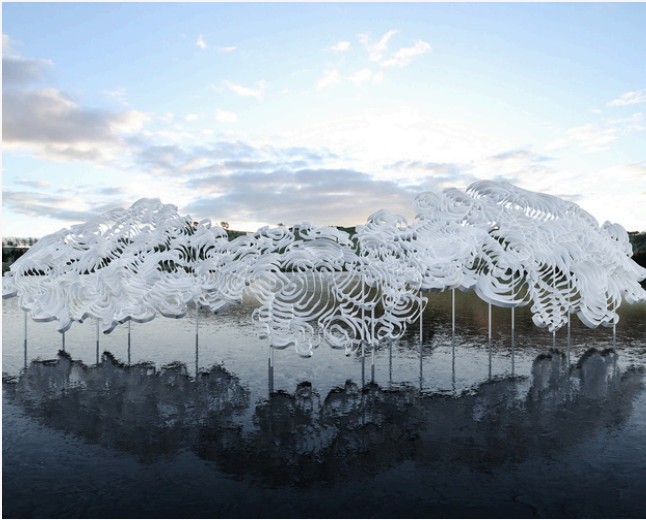














SOM TAM







An architectural rendering of a modern interior space, likely a restaurant or lounge. The scene is characterized by a dark, industrial aesthetic with a prominent blue ambient lighting scheme. The ceiling is a dark, textured concrete with recessed lighting strips. A long, dark wooden table is positioned in the foreground, surrounded by simple wooden chairs. To the left, a bar area is visible with a dark brick wall and a counter. To the right, large glass windows offer a view of the outdoors. The overall atmosphere is sophisticated and contemporary.

LUCID METAL

Architectural Rendering

www.lucidmetal.com.au

kane@lucidmetal.com.au

ph 02 9517 1280

mob 0425 240 115