



THE  
BUILDING  
AGENCY

HELPING CREATE  
TOMORROW'S BUILDINGS.

CLADDING | SYSTEMS | ROOFING | INTERIORS

**EQUITONE**  
Fibre cement facade materials

**CEDRAL**

**INNOWOOD**  
SUSTAINABLE TIMBER ALTERNATIVE

**SPS TIMBER**  
SHINGLES

**ALUCOBOND®**

**CUPACLAD**  
by CUP4-GROUP

**frontek**  
cerámica tecnológica en techos

**OWENS CORNING®**  
INNOVATIONS FOR LIVING™

**ALICLAD**

**TERREAL**

**DIBOND®**

A HECO GROUP COMPANY



AT **THE BUILDING AGENCY** WE SELECT AND SOURCE BEAUTIFUL, TECHNICALLY SUPERB BUILDING SYSTEMS THAT WILL BE ENJOYED FOR GENERATIONS.

**As building 'skin' specialists, we curate and source the best international products, so architects and contractors can design and build beautiful, enduring buildings.**

High performance is at the heart of everything we do. Our products are proven to perform over decades in Europe; chosen for their specifications and quality, and then further tested in NZ by accredited labs. We are focused on reducing risk and improving compliance throughout the design, procurement and construction process and everything we source is certified for durability, fire, structure, water tightness and thermal performance. Some of our products have pedigrees of over 50 years. In other words, we are very particular about the products we choose to represent.

# CONTENTS

## FACADES

Cedral	5
Equitone Fibre Cement	6
Innowood	9
AliClad	10
Terreal	11
Cupaclad	13
Frontek	15
Alucolux	16
Alucobond Plus	17
Alucobond A2	18
Alucore (closed cell)	18
Aliwood Screen	19

## SYSTEMS

T50 Support System	20
WAB System	20
Siderise	21
NV3 Nvelope	21
Omega Top-hat	22
Alpha Rail	22

## ROOFING

Oakridge Pro 30	24
Duration Premium	24
Cedar Shingles	25
Cedar Shakes	25
ReadySlate	26

## INTERIORS

Dibond	28
Innoceil & Internal Linings	29
Innoscreen	30
Equitone - High Density Fibre Cement	31



# FACADES

**CEDRAL**

**EQUITONE FIBRE CEMENT**

**INNOWOOD**

**ALICLAD**

**TERREAL**

**CUPACLAD**

**FRONTEK**

**ALUCOLUX**

**ALUCOBOND PLUS**

**ALUCOBOND A2**

**ALUCORE (CLOSED CELL)**

# CEDRAL WEATHERBOARDS



**The ideal alternative to traditional cladding material,** Cedral is easy to maintain, resistant to rot and offers two stylish solutions depending on your needs. Cedral is a high-quality and durable composite material produced using natural raw materials: cement, water and, cellulose. These fibre cement planks create a beautiful contemporary look that will last a lifetime. Being a sustainable material, Cedral is ideal for new-builds and renovation projects. Thanks to the multilayer fibre structure, the fibre cement planks combine the durability of stone with the design flexibility of wood.

Cedral is coated in a high-quality external grade acrylic paint specifically developed and manufactured by Etex. The coating is factory applied which is not comparable with an on-site application. The planks are pre-heated before the application of the primer and then dried in an oven after the topcoat. The high quality and purpose-designed external grade acrylic coating system coupled with the semi-baked application, result in the superior durability of the finish.

Available in 22 colours to create a perfect aesthetic finish. We stock a number of these in New Zealand

## CEDRAL LAP

Cedral Lap planks are designed to be installed in a traditional weatherboard style. Cedral Lap planks are a fibre cement, overlapping plank cladding material creating a modern and contemporary facade. Cedral soffit and fascia boards work in perfect harmony with the sidings.

## CEDRAL CLICK

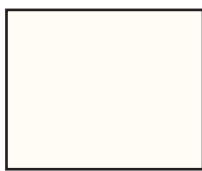
Cedral Click external cladding is easy to install and maintain. The weatherboards have a tongue and groove system and can be placed horizontally or vertically.



Stock Colours (More colours available on indent)



Dark Brown



Everest White



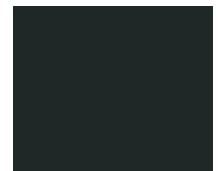
Clay



Shark Grey



Slate Grey



Black

**Equitone Fibre Cement:** One of the most economic yet safest options for exterior cladding.

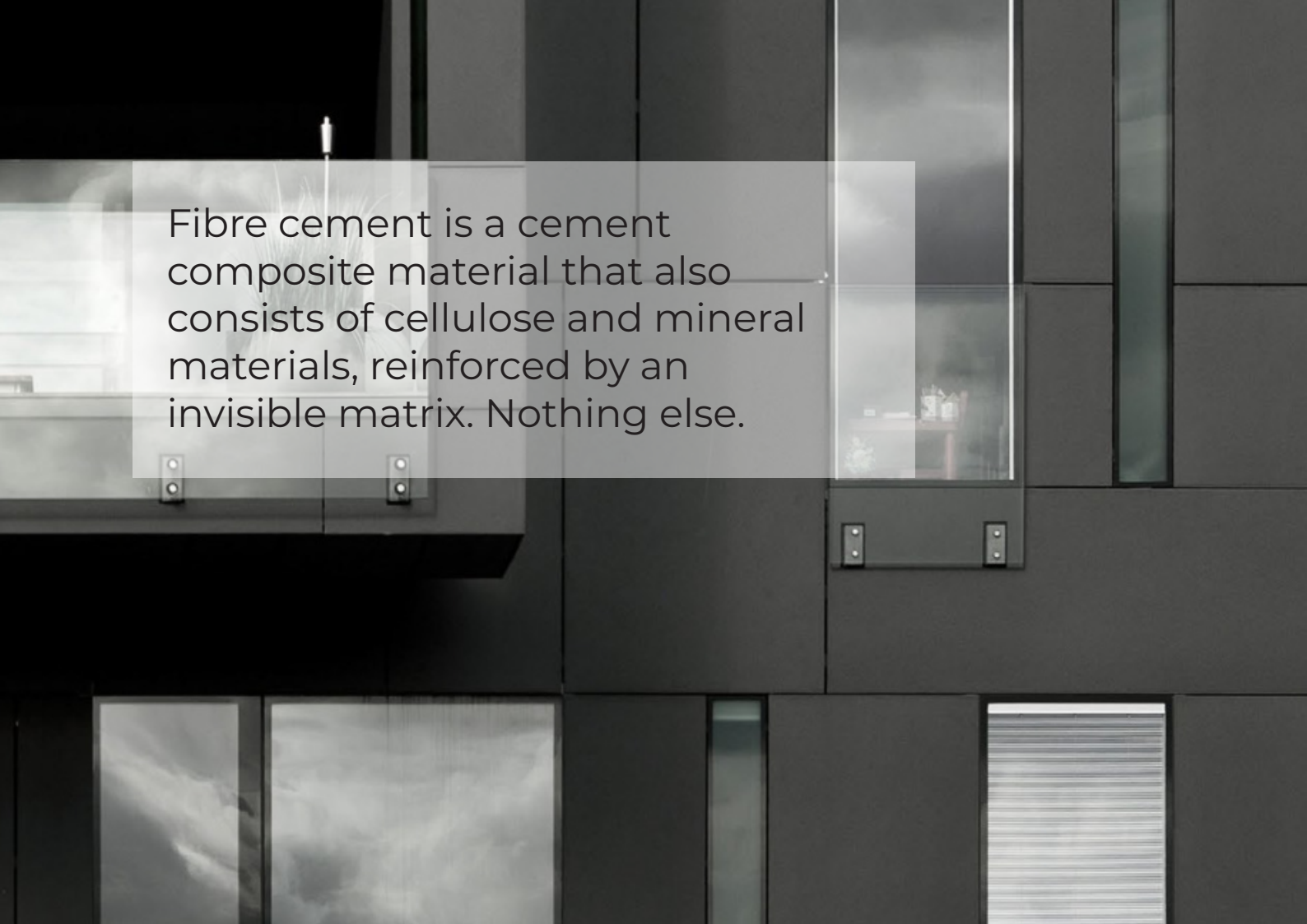
**EQUITONE®** Fibre cement is a mineral composite material with outstanding aesthetic and physical properties, designed as a high performance cladding by and for architects.

Every **EQUITONE®** panel is unique, showing the raw, untreated texture of the fibre cement base material. The fibre cement material is 'through coloured' meaning the surface displays the inner texture and colour of the core material. No matter what facade design options you explore, the through coloured materials can be transformed into crisp, monolithic facade details. The material can be perforated using waterjet or CNC machines, large or very small cuts can be made, it can even be embossed and printed. Some designers have used it for interiors or furniture.

**EQUITONE®** through coloured material enables you to achieve flawless intricate details.

- Fire Safe (Non-combustible and no spread of flame)
- Resistant to extreme weather conditions and temperatures
- Integral "through colour", no ongoing maintenance required
- Installed life expectancy of at least 50 years
- Resistant to vermin, insects, mould growth, fungi etc
- High-density construction





Fibre cement is a cement composite material that also consists of cellulose and mineral materials, reinforced by an invisible matrix. Nothing else.

## FLEXIBLE

- The EQUITONE material ranges come in a standard panel size of 1.22 x 3.05m and can be transformed into almost any size or shape in the workshop or on-site.
- The range consists of a broad range of colours, semi-transparent surface coatings and textures.

## SAFE

- Facades with pre-finished panels are thin and lightweight, resulting in a minimum depletion of raw materials, easy installation and better seismic resistance.
- The products have been tested according to NZS2908 and have been used all over the world and in the most diverse climate zones.
- The material can be perforated using waterjet or CNC machines, large or very small cuts can be made, it can even be embossed and printed. Some designers have used it for interiors or furniture.

## USER FRIENDLY

- At the Building Agency the Technical Department develops solutions that cope with the most diverse applications. We take all factors into consideration including exterior and interior cladding, modular sun protection systems and balconies.
- Specifically developed and tested with ventilated and drained cavity systems.
- Concealed system or visible stainless-steel fixings.
- Easy to install with minimal components.

## PRODUCT RANGE

We currently stock cladding from the Equitone Natura and Tectiva ranges although if you are looking for a different product please speak to us about arranging a special order. No matter what design options you explore, EQUITONE's through-coloured nature guarantees crisp, monolithic details.



### TECTIVA (standard range)

EQUITONE [tectiva] is a through-coloured facade material, characterised by a sanded surface and naturally occurring hues within the material. The material comes in a large panel size and can be transformed into any size or shape in the workshop or on site.



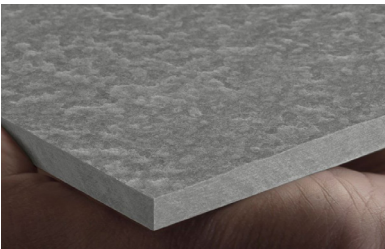
STOCK COLOURS: More colours available on indent.

TE00 TE10 TE15 TE20 TE85



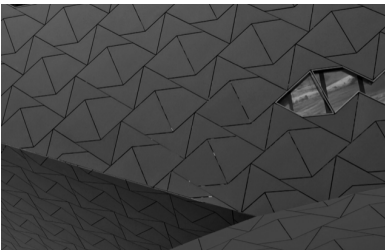
### LINES (by special order)

EQUITONE [lines] is a unique 3D shaped, through-coloured facade material that plays with light and shadow. EQUITONE [lines] displays a linear texture that highlights the raw inner texture of the core fibre cement material. Both visible and invisible fixing options exist for EQUITONE.



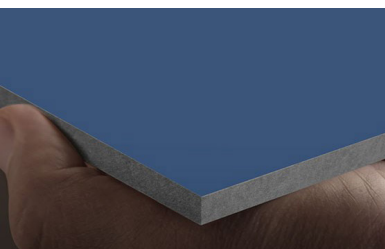
### LUNARA (by special order)

EQUITONE [lunara] is a through-coloured fibre cement panel with a surface resembling a lunar landscape that demonstrates the natural quality of fibre cement as a material. The special production process makes each panel unique in terms of its colour, texture and surface, with a pattern that is not repeated.



### NATURA (by special order)

EQUITONE [natura] is a through-coloured facade material. Every EQUITONE [natura] panel is unique, subtly displaying the raw texture of the core Equitone fibre cement material. The material comes in a large panel size and can be transformed into any size or shape in the workshop or on site.



### PICTURA (by special order)

EQUITONE [natura] is a through-coloured facade material. Every EQUITONE [natura] panel is unique, subtly displaying the raw texture of the core Equitone fibre cement material. The material comes in a large panel size and can be transformed into any size or shape in the workshop or on site.



## SHIPLAP CLADDING SYSTEM

INNOWOOD's Shiplap Cladding System features an interlocking tongue and groove design to achieve concealed fixings while providing a conventional timber appearance with a warm, clean and durable finish. Consistently uniform shadow lines between the boards become architectural features when the boards are installed either horizontally or vertically.

## V - JOINT SHIPLAP CLADDING

INNOWOOD's V-Joint shiplap cladding system comes in 25mm thick boards with 'V' shaped tongue and groove shadow line rebated joints. INNOWOOD's V Joint shiplap boards overlap one another, concealing the fixing and locking in the boards to give a clean finish. Profiles can be mixed and matched to achieve varying board widths, creating a unique architectural feature.



Available Profiles



WC20025/WC13625

Available Stock Colours



Urban Oak

Dark Oak

Spotted Gum

Kiwi Black

**\*Other profiles and colours including lighter shades available by request. MOQ's do apply. You can view full colour chart on our website.**

# ALUMINIUM WEATHERBOARDS



## Performance and aesthetics combine in a contemporary aluminium cladding system.

New Zealand's tough climate calls for exterior products that can perform in all weather conditions, meet the most stringent code and standards, and bring elegance and architectural integrity.

AliClad, designed by The Building Agency, is a premium aluminium weatherboard system that has had every detail and feature designed, tuned and resolved. Backed by decades of local

experience and international product knowledge, AliClad offers architects, builders and developers a robust and beautifully finished product, supported on an easy-to-install fixing system engineered to perform.

Designed for large-scale commercial projects with a residential application.

\*\* A selected range of profiles and widths.

## KEY FEATURES

- Strength
- 25-year coating warranty
- Coated in New Zealand
- Mechanical drainage
- Designed for multi-storey
- Flashing system
- Non-combustible
- Ideal timber substitute
- Easy installation

## PROFILES



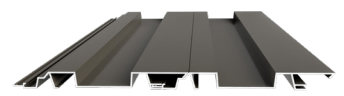
SQUARE GROOVE - 200



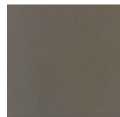
V-GROOVE - 135A



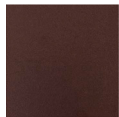
V-GROOVE - 200



BOARD AND BATTEN - 200



Brilliance



Dark Bronze



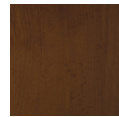
Monument



Vintage Silver



Maple



Merbau



Rata



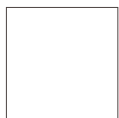
Rich Oak



Tawa



Black Ink



White



Linen



Natural Shimmer



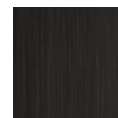
Suntone Bronze



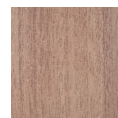
Australian Cedar



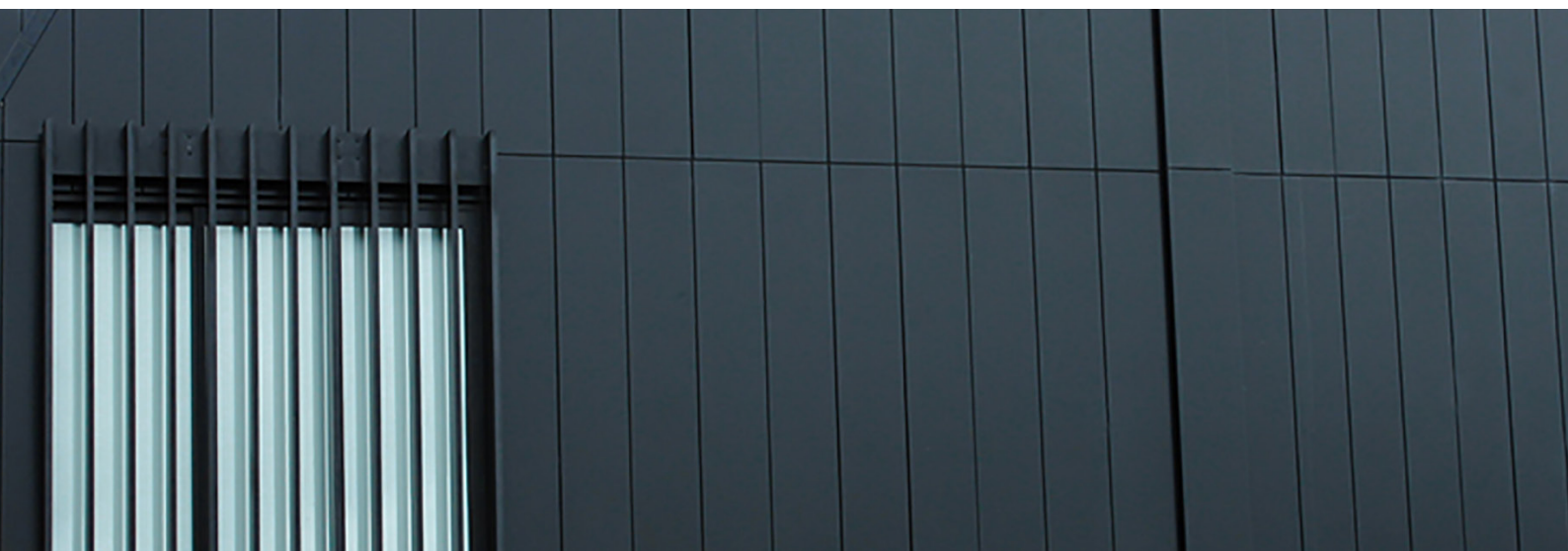
Beechwood



Black bean



Grey Walnut



# TERRACOTTA CLADDING



## BUILDING BEAUTY

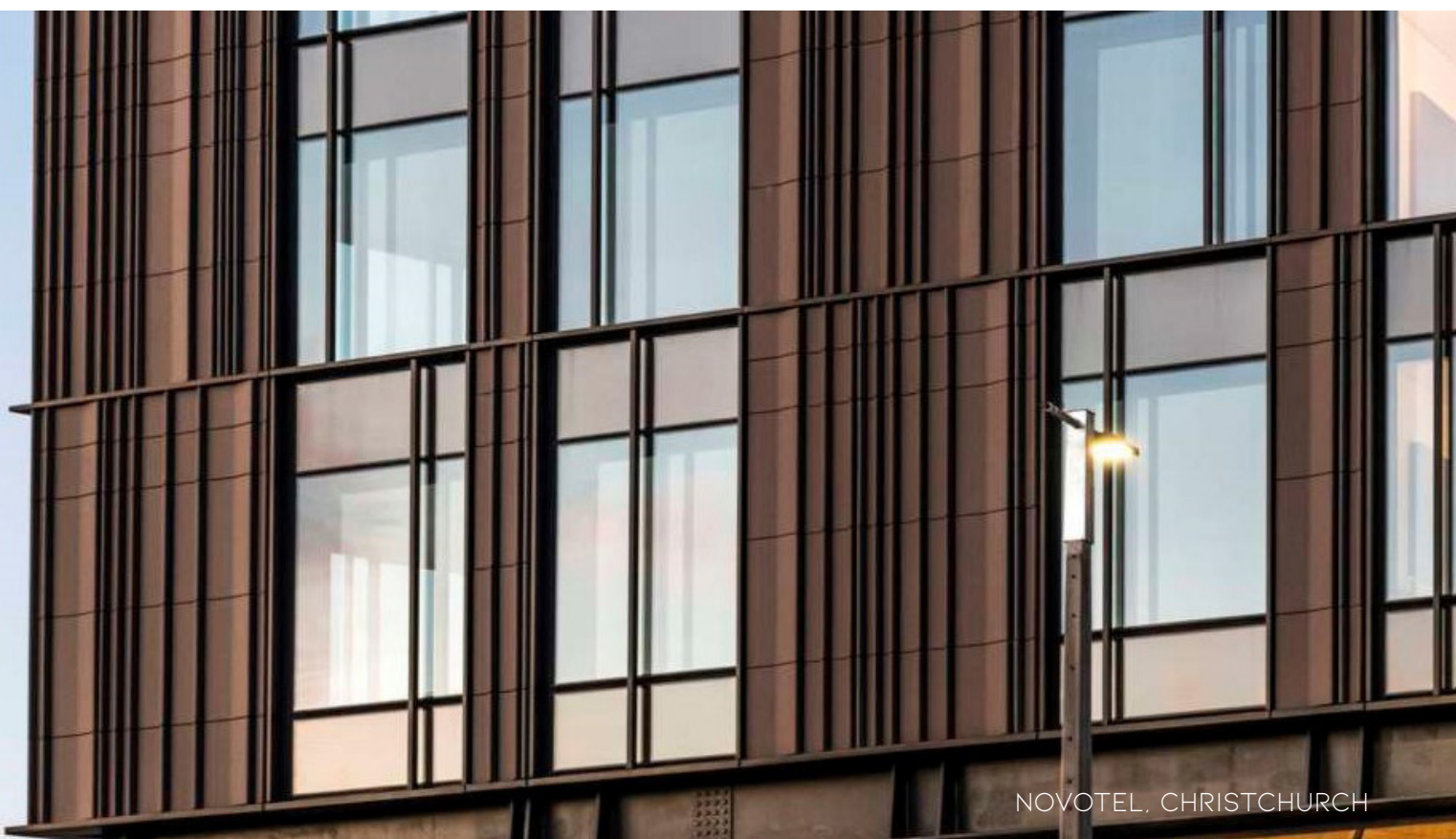
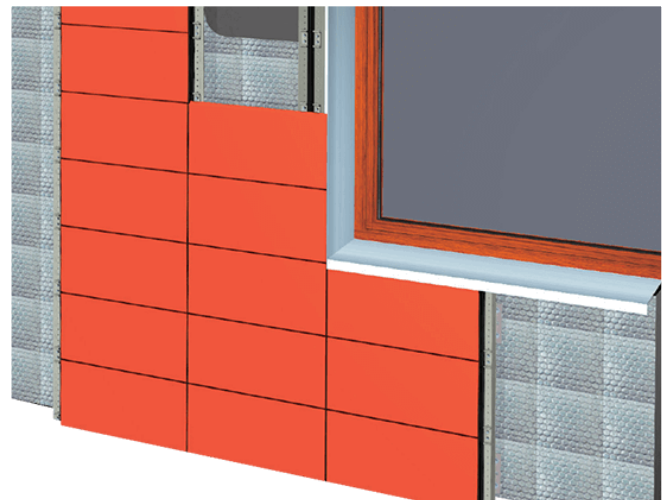
Inspired by the beauty and the natural qualities of terracotta for more than 150 years, TERREAL has become a key player in building materials. Our range of tile options includes, double walled tiles, acoustic tiles, unique surface finishes, extruded corner options and more. The unique finishes allow the possibility to create tiles in any RAL colour and to apply logos onto the surface. We are even able to work with 3-D shapes in the facing of the tile.

## WHILE OTHER MATERIALS MAY CHALLENGE TERRACOTTA, FEW ACHIEVE ALL OF THE FOLLOWING QUALITIES:

- Modern yet authentic
- Environmentally friendly and 100% natural
- Fire and impact resistant
- Durable, perennial and recyclable
- Low thermal conductivity
- Architectural and creative
- Warm and light

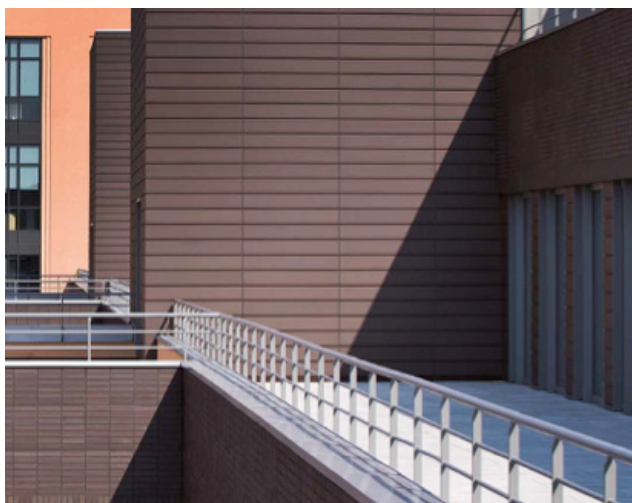
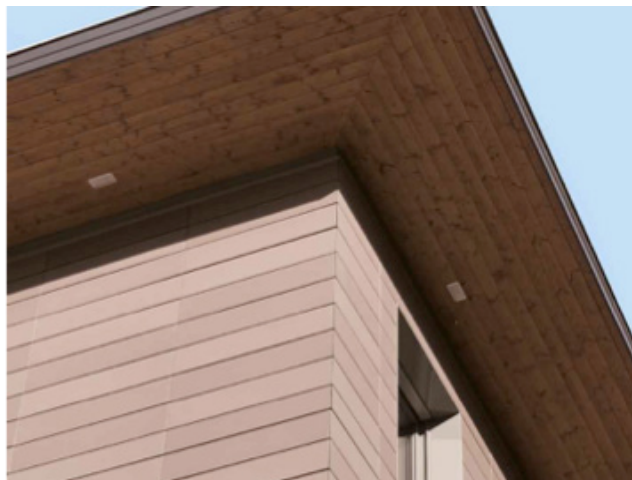
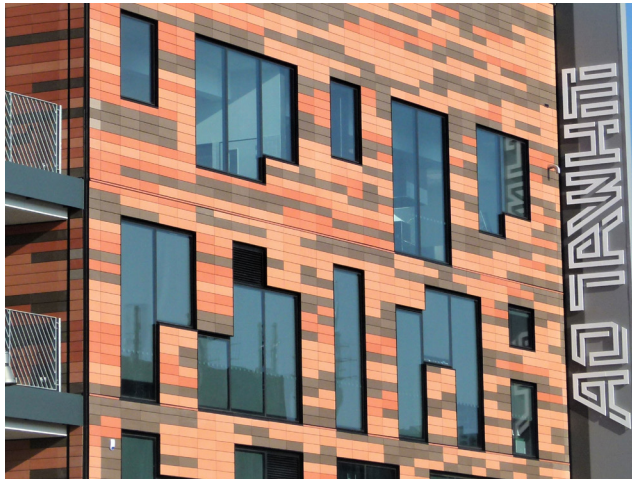
## TERRACOTTA: TIMELESS MODERNITY OF AN AGE OLD MATERIAL

Since ancient times, clay has been used for decoration, protection and appeal. Today, it takes new shapes that add style to your architectural designs. Terracotta is a material with cutting-edge production techniques and industry leading performance in all requirements: manufacturing consistency, numerous colour variations, product customization, ease of installation, versatility, insulation performance and environmental responsiveness.



## BUILT TO SURVIVE AND THRIVE

The substructure is designed to cope with New Zealand's high wind and high humidity conditions, with either an EPDM pressure gasket or open joint vertically negative detail, a minimum 60mm wide cavity and horizontal shiplapped tiles. The systems have been tested against wind pressures of up to 5.5 kPa for the Breeze tile. The bracket system used is illustrated under T50 support structure (Page 21)

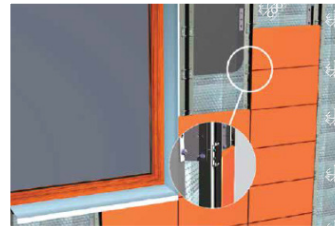


As the tiles are hanging onto proprietary clips, the system does not create stress on the tiles but offers great seismic resistance.

Facades are thin and medium weight (from 30kg/m<sup>2</sup>) and the wide cavity system achieves pressure-equalisation, exterior grade 50-year durability and extended detailing to comply with the required conditions for the project.

### BREEZE (standard range)

- Economic and light solution : 35kg/m<sup>2</sup>
- Always 300mm height and 6 standard colours
- Smooth and ridged surface available
- Easy cuts made on-site
- Sustainable and maintenance free



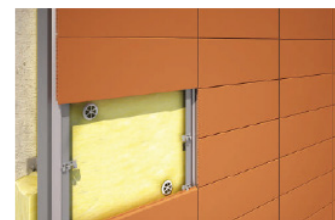
### PITERAK XS (by special order)

- Incomparable lightness (30kg/m<sup>2</sup>)
- Optimisation of the transport cost (size and weight)
- Choice of installation: horizontal, vertical
- Simple and fast installation using clips



### PITERAK SLIM (by special order)

- Large length terracotta cladding : up to 180 cm
- Height from 20 - 60cm
- Many customization possibilities : colour/finish/shape
- Choice of installation : horizontal or vertical
- High impact performance
- Maintenance free and durability



# NATURAL SLATE

Developed from centuries of use, **CUPACLAD** ventilated façade systems can adapt to any kind of project, by combining alternative fastening methods and slate formats.

The systems were created to fill the need to adapt to the trend for more sustainable solutions.

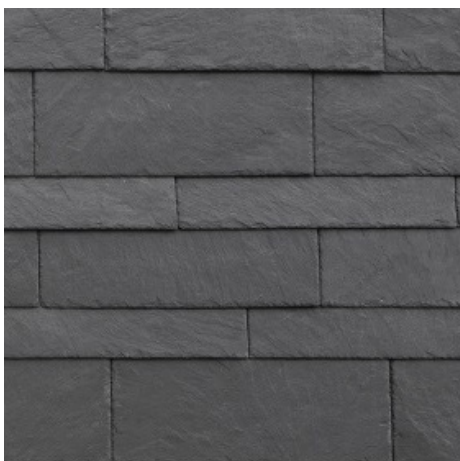
By using highly durable tectonic slate, **CUPACLAD** rises to the challenge and offers a competitive and sustainable option for cladding any type of façade.

**CUPACLAD** solutions are lightweight, easy to install and can be cut to any shape, to suit any architectural vision.

With **CUPACLAD DESIGN**, this design freedom is further reinforced, with a collection of stunning finishes created by combining different profiles, sizes and configurations. Each is inspired by current architectural trends and designed to maximise the natural beauty of slate.



## PRODUCT RANGE



RANDOM 101



LOGIC 101

- **ONE-OF-A-KIND:** Each slate is unique. No other artificial alternatives could compare with a product which has been moulded by nature for over 500 million years.
- **DURABILITY:** With a durability of over 100 years, natural slate is the most resistant material used for roofing. Unlike the artificial products, the colour and the properties of slate stay, unchangeable, through time with no need for recoating.
- **SUSTAINABILITY:** By being 100% natural, slate is the roofing material with less environmental impact. Each slate is handcrafted by our skilled splitting craftsmen

with no chemical products or additional treatments added.

- **PERFORMANCE:** Slate is capable of enduring extreme temperatures, difficult snow formation, fire-resistance as well as being non absorbent
- **PERSONALITY:** Its unparalleled character and durability makes this material ideal to give an outstanding appearance and personality to any architectural project.
- **The world leader in natural slate.**

- COST SAVING OVER OTHER SLATE
- QUALITY ASSURED
- SAFE
- KIND TO THE ENVIRONMENT





# VENTILATED CERAMIC FACADES

Its unique design ensures optimal fixing to any structure without any additional cuts or perforations that could impair their strength. Frontek rainscreen installation is quick and easy in sheer walls, stud walls or integrated into curtain walls.

Porcelain is one of the most used decorative materials both for indoor and outdoor projects. The range of colours and textures is virtually

limitless. Our catalogue ranges from the traditional stone finishes to the latest European designs in colours and textures.

Frontek combines the advantages of extruded terracotta panels and pressed porcelain tiles. The panels are rectified on all four sides, and therefore offer a level accuracy and tolerance unattainable for similar materials.



## FINISHES

Frontek offers a wide range of pieces in different sizes and finishes to suit all projects and the latest trends in architecture. A variety of sizes, textures and colours can be combined in

different ways, to give each facade a unique and original design. All facade panels can be adapted to any building peculiarity and its surroundings, which will result in beauty that brings great poise to the structure, and improves the aesthetics of the area.

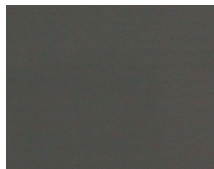
### Available Finishes



Metal



Nature



Polished



Special



Stone



Wood



# ALUCOLUX SOLID



3A Composites have used their vast experience with aluminium façade panels to develop **Alucolux** Solid Aluminium over the last 60 years. This enhances our extensive range of high performance cladding solutions. **Alucolux** is a 3mm solid, coil coated aluminium sheet material for exterior cladding and interior linings. **Alucolux** is available in most of the same colours found in the **Alucobond Plus** range and is also available in embossed surfaces to liven up the 'wood look' and 'stone look' ranges.

3A have developed from the optimum marine grade aluminium, **Alucolux®** is the perfect combination of alloy temper, hardness and ductility. Architectural cladding applications require the correct combination of these properties to perform when exposed to wind loads and pressure while remaining flexible enough to be manufactured into its final forms. **Alucolux®** provides a non-combustible cladding solution for compliance and safety with

no complications. Deemed non-combustible and certified to AS1530./ISO5660.1/EN13501-1. Additionally **Alucolux** is the first system to be tested in NZ under the BS8414.

**Alucolux** provides solutions for architects, designers, developers, builders and construction companies looking for a premium solid aluminium façade panel they can safely specify for commercial, educational, aged care and residential projects without compromising design. This compliments our range of **Alucobond Plus**, **Alucobond A2** and **Alucore A2** resulting in superior performance across and price range.

## KEY FEATURES

- 3mm solid non-combustible aluminium
- Coil coated for colour consistency
- Flat surface for a premium finish
- 1500mm wide sheet size up to 6000mm long can be provided





# ALUCOBOND PLUS

# ALUCOBOND®

**Aluminium composite panel with a fire-retardant mineral filled core.**

**ALUCOBOND® PLUS** consists of two aluminium cover sheets and FR mineral-filled core. The unsurpassed finish and flatness of **ALUCOBOND® PLUS**, its dynamic range of colours, formability and weather resistance allow the designer complete freedom of creativity. **ALUCOBOND® PLUS** has been developed exclusively for the more stringent requirements of the fire prevention regulations in architectural products. Thanks to its mineral-

filled core **ALUCOBOND® PLUS** meets the strict requirements of the fire-classifications as a Type B material. Additionally, it achieves a Group 1S for internal uses. It offers all the proven product properties of the **ALUCOBOND®** family, such as flatness, formability, resistance to weather and easy processing.

**ALUCOBOND®** shows excellent product properties such as extraordinary flatness, a large variety of colours and perfect formability. It has been developed as a rigid and, at the same time, flexible fascia material for architecture.

## PAINT FINISH

The face sheet of aluminium is finished in a factory applied fluoropolymer (PVDF) high performance coil coating in accordance with EN13523, ECCA Quality Label and Voluntary Specification AAMA 2605-11.



# ALUCOBOND A2



**ALUCOBOND® A2** is a composite panel consisting of two aluminium cover sheets and a mineral-filled core. **Alucobond A2** has an enhanced FR core that further limits combustibility with an A2 rating + EN13501-1 and is suitable for buildings that require a higher levels of fire resistance. **Alucobond A2**

has all the benefits and range of colours as **Alucobond Plus**. **ALUCOBOND® A2** perfectly adapts to the contours of the buildings forming complex, flowing elements. It is the combination of formability, flatness, stability and weather resistance that characterizes this material.



# ALUCORE CLOSED CELL

**ALUCORE** consists of two aluminium cover sheets of at least 0.5mm thickness sandwiching an expanded closed cell “honeycomb” aluminium core. The aluminium closed cell honeycomb core gives the composite panel a high rigidity and an extremely low weight. **ALUCORE** therefore provides a decisive advantage over other types of core panel where very high demands are made on the material for applications such as façade cladding or roofing, e.g. if exposed to extremely high wind load and for large self-supporting panels. In contrast

to conventional type composite panels, the closed cell system components of **ALUCORE** are bonded in a continuous process. The material does not become brittle-hard but displays tough and resilient properties and excellent peel strength – the basis for extremely high product quality. **Alucore:** The extremely lightweight aluminium honeycomb panel. **Alucore** provides superior flatness and rigidity for its mass and is applied in numerous business sectors such as architecture, industry and transport.



# ALIWOOD SCREEN

AliWood specialises in designing and manufacturing an extensive range of screening and facade systems to create great wood-look solutions for various applications. Our screens are made in a number of common sizes to suit most projects. We also offer complete flexibility, not only in design, but also in choices of colours, styles and sizing.

The AliWood Clip On range is seen to be the fastest and easiest installation of an aluminium

## APPLICATIONS

- Residential
- Commercial
- Health/aged care facilities
- Educational institutions
- Hospitality sector
- Fit-outs
- Retail & shopping centres
- Bush fire prone areas

batten extrusion. The Clip On extrusion is available in several different sizes. These sizes can be mixed and matched to suit your design or preferred final aesthetic. The backing plate is a universal extrusion that suits a range of sizes and can be mounted to any surface by using either screws or bonding the tracking to the facade. We offer complete flexibility not only in design but also in choices of colours, styles and sizing.

## FEATURES

- Non-combustible
- Ideal timber substitute
- Easy installation
- Zero maintenance
- Variety of colours
- Sustainable
- Rot, mould and pest resistant
- Versatile
- Lightweight
- Hidden Fixing System



# SYSTEMS

T50 CLADDING SUPPORT SYSTEM

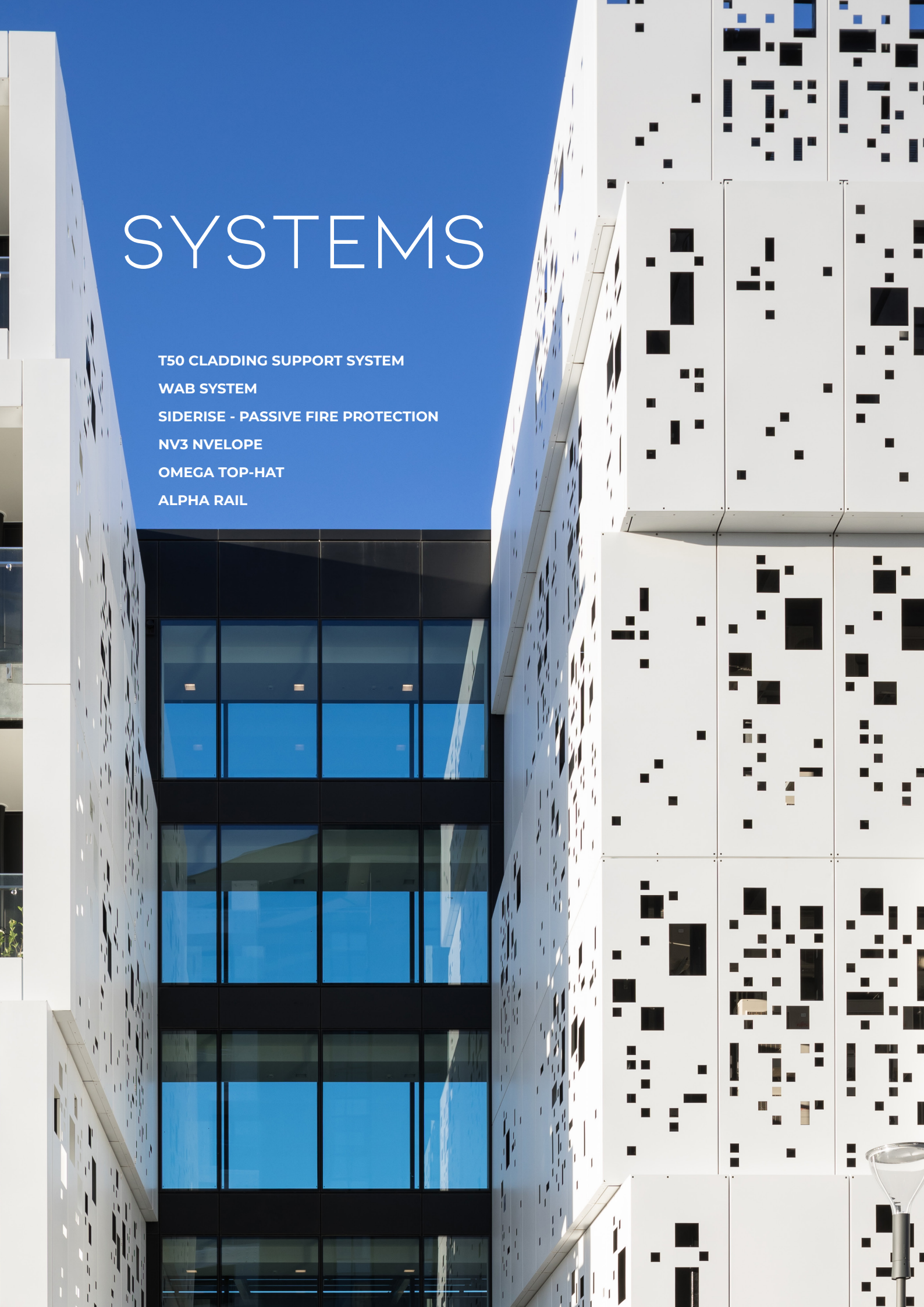
WAB SYSTEM

SIDERISE - PASSIVE FIRE PROTECTION

NV3 NVELOPE

OMEGA TOP-HAT

ALPHA RAIL



The Building Agency offers a range of tested installation systems for all of our facades. Here are some examples:

## T50 CLADDING SUPPORT SYSTEM

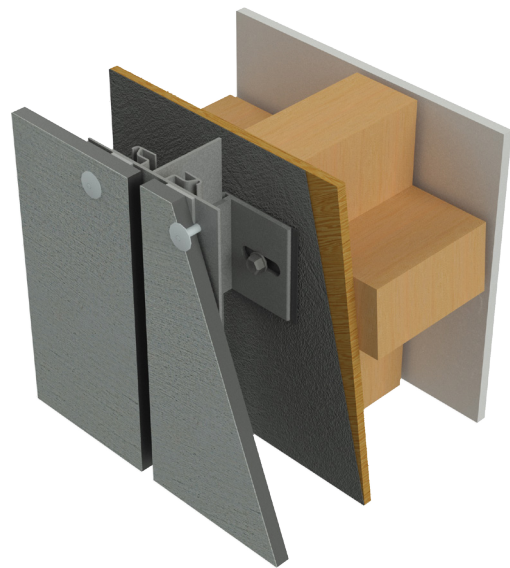
The **T50** Cladding Support System is a drained & ventilated cavity system based on the concept of vertical only aluminium rails and variable support brackets for Terreal, Equitone & other products.

The **T50** System excels due to its simplicity, and provides enhanced safety against weathering, and building performance, while maintaining unparalleled versatility and flexibility when creating cavities between 65 and 600mm wide.

These larger cavities enable the opportunity to adopt and deliver the European standards of externally insulated building envelopes. The system is designed to deliver a highly performance and aesthetical cladding application while still remaining economical & competitive price.

**T50** is highly suitable for multi-level developments, providing options for both simple and complex façade layouts, and is engineered to fit over standard NZS3604 timber framing without the need for doubling up of timber studs.

The system can carry cladding sheets such as Equitone Fibre Cement, Trespa HPL, Natural Stone Panels, Architectural Glass, Aluminium Composite, Terracotta Tiles and More.



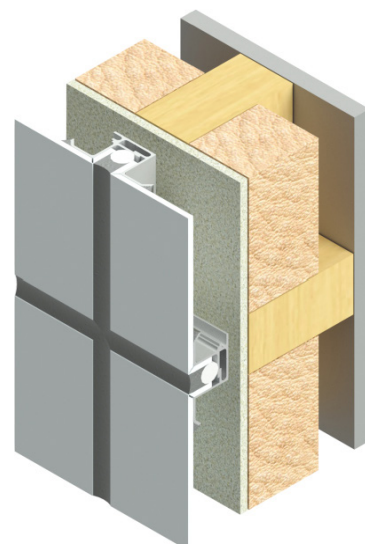
## WAB SYSTEM

This Building Agency cladding system comprises an aluminium composite panel and fixing system manufactured from extruded aluminium and stainless-steel fastening components. When specifying a Building Agency Cladding System, it is important that the specified fixing system and ACP panel is suitable for the intended site and building.

Within our scope: Where the intended use of The Building Agency cladding system falls within our defined scope and where all details are in accordance with the fixing system, then all plans and specifications may be completed by a designer with the appropriate license class.

Outside our scope: Where the intended use of The Building Agency Cladding System falls outside our defined scope, or where details

other than those provided are being used, then a façade engineer is required to establish compliance with all relevant provisions of the NZ Building Code.



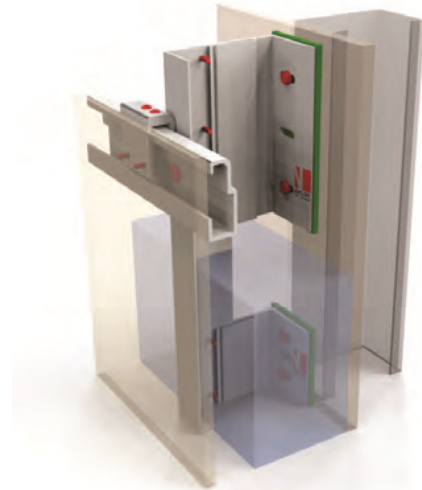
# NV3 NVELOPE

**NVELOPE®** NV3 Concealed Mechanical Fixing System can effectively and invisibly support a large range of cladding materials, including but not limited to; high density fibre cement, ceramic, thin stone. Selected cladding materials are secured using hangers and specialised undercut stud anchors or screws to provide a concealed fixing.

Horizontal **NVELOPE®** channel profiles are fixed to the vertical profiles, creating a cavity ensuring correct drainage and ventilation is achieved. Vertical carrier rails, the **NVELOPE®** 'T' and 'L' profiles, are fixed to the building structure using **NVELOPE®** support brackets, which closely follow a fixed and floating point fixing schematic to ensure the performance of the system is allowed for even in the most extreme climates. **NVELOPE®** fixed point brackets absorb both vertical shear dead loads of the system, located centrally, with one fixed point per vertical rail.

**NVELOPE®** floating point brackets absorb wind loading and allow for expansion and contraction, all bracket locations which are not a deadload point use these brackets.

**NVELOPE®** bracket spacing is determined by specific dynamics such as the dimensions and weight of the façade cladding, local wind loads and the structure of the building.



# SIDERISE: PASSIVE FIRE PROTECTION

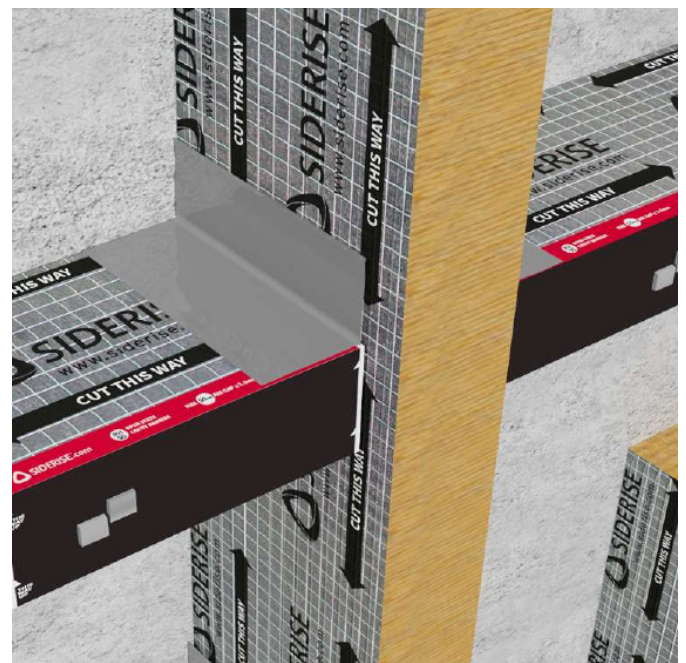
**SIDERISE** offer some of the most technically advanced fire protection and noise control solutions in the world. They have provided acoustic, fire and thermal insulation solutions for building facades for over 45 years.

**SIDERISE** is one of the few products in NZ to have undergone full system testing.

The passive fire protection systems are industry leading and third party certified. The **SIDERISE** curtain walling firestop was the first to market internationally and their reactive solution for ventilated facades was the first within Europe.

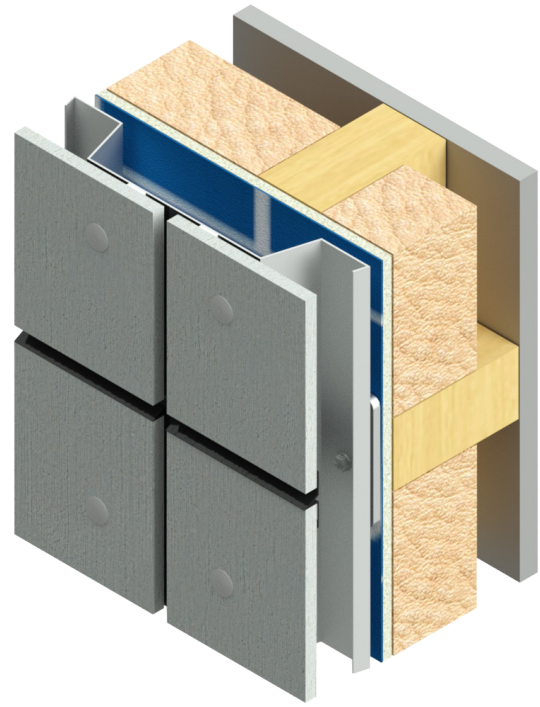
**SIDERISE** facade solutions:

- Rainscreen Cladding Ventilated and Non-Ventilated Cavity Barriers
- Perimeter Fire Stop for Curtain Wall



# OMEGA TOP-HAT

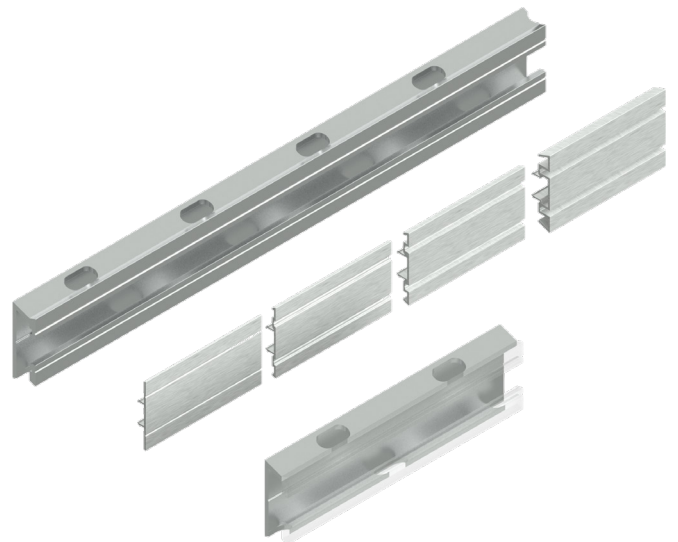
The **Omega Top-hat** zincalume profiles were originally designed as a support rail system for Equitone. These are generally used on standard lightweight steel stud, masonry, or concrete substructures. Depending on the substructure type and arrangement as well as the required cavity width, a single or double layer Top hat construction may be used.



# ALPHA RAIL

The Building Agency has designed two metal rail support systems to provide structural attachment for a number of our cladding systems.

This unique design has been engineered with maximum performance in mind for high wind zones, corrosive zones and fire performance. The fixing through the rear wall offers maximum holding power and safety at extremely high wind loadings. This makes it the perfect partner for products like AliClad in high wind zone locations. The non-combustible nature of aluminium ensures it's the perfect partner for many cladding systems above 10 metres.



# ROOFING

OAKRIDGE PRO 30  
DURATION PREMIUM  
CEDAR SHINGLES  
CEDAR SHAKES  
READYSLATE





# OAKRIDGE PRO30<sup>®</sup>



## SOLID PERFORMANCE AND STRIKING BEAUTY.

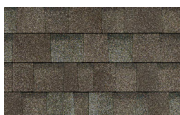
Owens Corning Oakridge laminated shingles have a warm, inviting look, for a step up from traditional shingles. With an expanded Oakridge

shingle colour palette, you are provided a unique blend of artistry and craftsmanship that will give your home a look that is anything but ordinary.

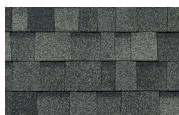


### Available Colours

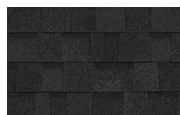
#### Stock



Driftwood



Estate Grey



Onyx Black

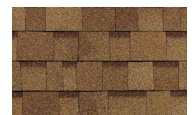


Teak

#### Indent



Brownwood



Desert Tan

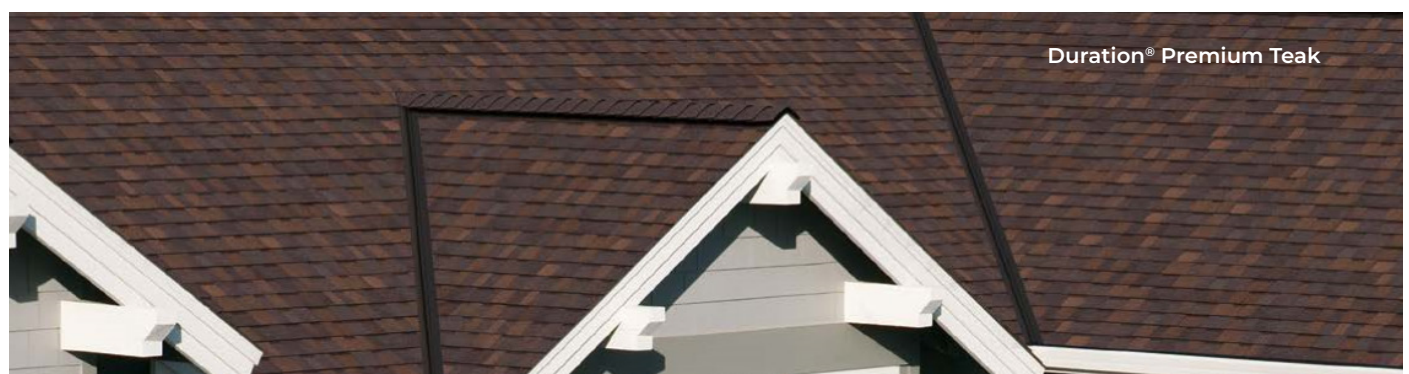
# DURATION PREMIUM<sup>®</sup>

TruDefinition<sup>®</sup>  
**DURATION<sup>®</sup> SHINGLES**  
with SureNail<sup>®</sup> Technology

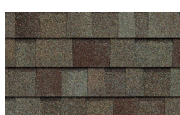
## BOLD CONTRAST. DEEP DIMENSION. OUTSTANDING PERFORMANCE.

TruDefinition Duration Shingles are specially formulated to provide dramatic colour contrast and dimension to any roof and are available in all the popular colours. Beyond the impressive

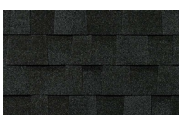
curb appeal, they also come with the advanced performance of patented SureNail<sup>®</sup> Technology, a technological breakthrough in roofing.



### Available Colours



Driftwood



Onyx Black



Teak



Estate Grey

# CEDAR SHINGLES

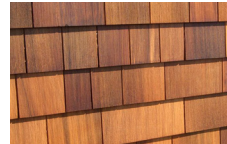


The premium grade of shingles for roofs, gable ends and sidewalls. These top-grade shingles are 100% heartwood, 100% clear and 100% edge grain. Cedar shakes and shingles manufactured by members of the Cedar Shake & Shingle Bureau ("CSSB") are the only products labelled with the "Certi" brand name.

Certi-label cedar shakes and shingles are made by experienced craftsmen who take pride in their trade and the quality of their product. Each bundle of product has the mill's distinctive Certi-label tucked under the bundle strap.

Asking for "the blue label" or "number one blue label" is not specific enough: CSSB members' products are the only ones with the Certi brand name on the label.

### Available Profiles



Western Red Cedar Shingles



Alaskan Yellow Cedar Shingles



# CEDAR SHAKES

## TAPERSAWN SHAKES

These Shakes are sawn both sides. Premium Grade is 100% edge grain, 100% clear and 100% heartwood.

## HANDSPLIT CEDAR SHAKES

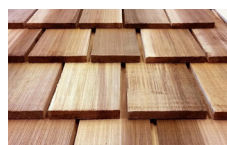
These shakes have split faces and sawn backs. Available in Premium Grade (100% edge grain)

## ALASKAN YELLOW CEDAR SHINGLES AND SHAKES

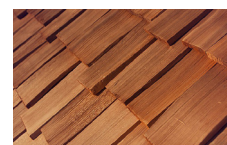
Due to its slow growth, Alaskan Yellow Cedar is hard and durable. It therefore offers good dimensional stability, and is resistant to weather, insects, and contact



### Available Profiles



Western Red Cedar Tapersawn Shakes



Western Red Cedar Handsplit Shakes



Alaskan Yellow Cedar Shakes

**READYSLATE is the first pre-assembled natural slate roofing system, developed and patented by CUPA group, world leaders in natural slate. READYSLATE** maintains all the exceptional properties of natural slate, a product which has been formed by nature for over 500 million years with unmatched and unbeatable characteristics.

Natural slate is a long-lasting, high strength, weatherproof and fire resistant natural material which holds natural beauty and remains unchanged over time. Our 100% natural slate is split by hand and uses no additional chemicals, which combined with its unmatched durability, makes it a sustainable material with low environmental impact.



## KEY FEATURES

80%  
FASTER

**READYSLATE** reduces installation times up to 80% when compared with traditional slate roofing.

100%  
NATURAL  
SLATE

**READYSLATE** is composed of high quality hand-quarried CUPA natural slates, which cover some of the oldest and most beautiful buildings around the world.

40%  
LESS PRODUCT  
WASTE

Thanks to its modular design and almost non-existent product waste, **READYSLATE** uses up to 40% less natural slate, reducing costs and structural weight.

## SIMPLE

**READYSLATE** offers the do-it-yourself approach, with a 4 step easy installation that requires neither skilled labour nor specialized machinery. The modular design makes laying slate tiles a breeze. **READYSLATE** modules are composed of 6 high quality handquarried Natural Slates, mounted on vulcanized EPDM waterproof sheet. Modular design ensures complete waterproofing and seamless integration with any existing roof elements.



# INTERIORS

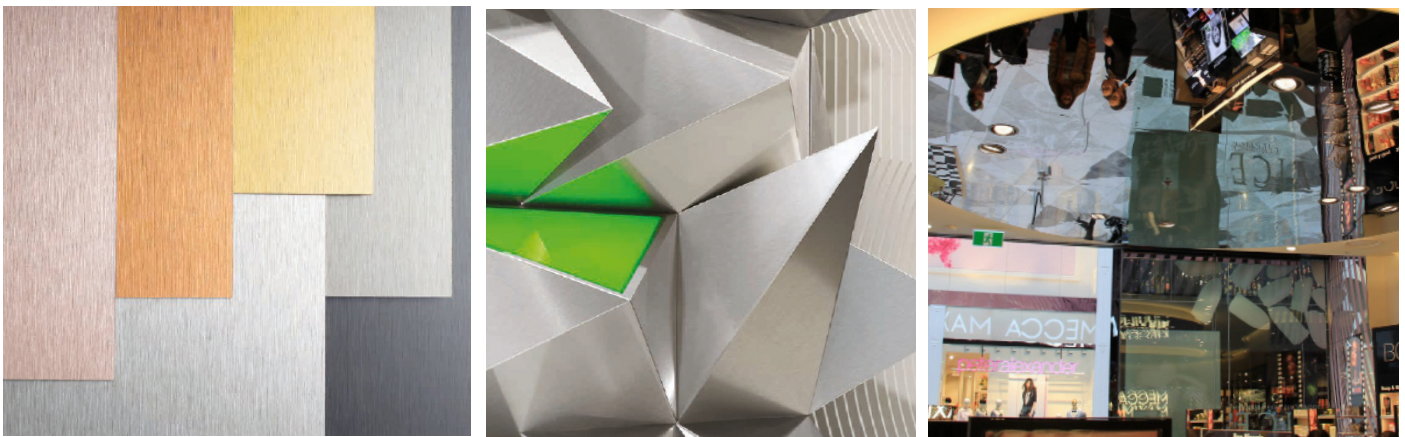
DIBOND  
INNOSCREEN  
INNOCEIL  
EQUITONE



**DIBOND is the ideal aluminium composite panel for corporate displays and architectural signage.**

DIBOND was originally developed in 1992 by 3A Composites as one of the first aluminium composite material for the display and signage markets. The light-weight and rigid composite material is ideal for large signage applications, architectural signs, display and exhibition, POS / POP display, digital & screen printing, photo mounting, interior design, industry and transport.

DIBOND is the original aluminium composite sheet, comprising two 0.3mm thick aluminium cover layers and a polyethylene or mineral core. It is lightweight, extremely rigid and strong, making it ideal for both indoor and outdoor applications. DIBOND is used predominantly in the areas of signage, product and furniture design, shopfitting, interior design, shop design as well as trade fair and exhibition design.



## KEY BENEFITS

- High corrosion resistance
- Excellent processing parameters, e.g. bending, routing and folding
- Colour quality, trueness and colour thickness
- Absolutely flat surface
- Stocked and distributed locally
- Applicable for screen printing and direct-to-substrate digital printing
- UV protection
- Optimized for outdoor signage use
- Low thermal expansion compared to plastic materials
- Low weight combined with high rigidity and dimensional stability
- Cost-effective through flat transportation and local manufacture installation

## APPLICATIONS

- Corporate Identity
- Exhibition
- Retail design
- POP display
- Photo mounting
- Shopfitting
- Sign making
- Transport

## STOCK COLOURS (More colours available on indent)



Traffic Red



Traffic Yellow



Platinum White



Jet Black



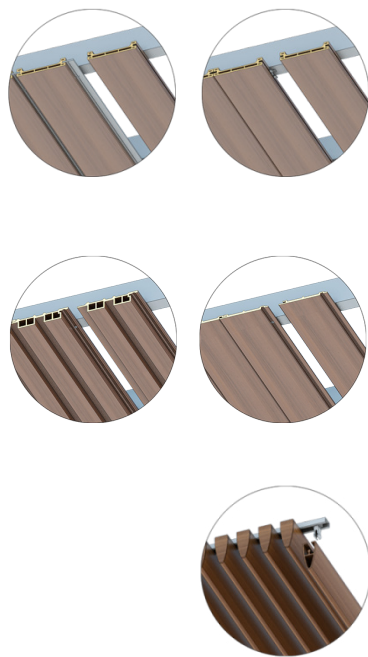
Butlerfinish

## INNOWOOD INTERNAL LINING

**InnoWood Internal Lining** is suitable for a range of internal lining applications where the look and feel of natural timber is desired. In addition to creating a stylish and warm interior finish, **InnoWood Internal Lining** is lightweight, and offers outstanding acoustic performance. The ability to curve and bend **InnoWood** Internal Lining makes it ideal for any design specification.

## INNOCEIL

**InnoCeil** offers the architect & designers the flexibility to create any architectural features, curves, waves and shadow effects, while incorporating basic building services such as lighting, ventilation, sprinklers and air vents. Our systems not only create instant sophistication as an architectural feature, but they also have a high acoustic performance rating for the ultimate sound quality.



### CONCEALED CLIP FIXING

**InnoCeil** Concealed Clip Fixing Ceiling System utilises a stainless-steel clip attached to each profile, and screws into the ceiling substrate without the need for exposed fixings. The system is easy to install and delivers consistent shadow lines between the boards for a smart, uniform look.

### SHIPLAP FIXING

INNOWOOD shiplap ceiling system is based on a traditional tongue and groove design, our Shiplap Ceiling System creates a clean finish with uniform joints but without any visible fixings.

### SUSPENDED CLICK ON SYSTEM

**InnoCeil** Suspended Click-On Fixing Ceiling System works on the principle of clipping the profile onto its suspended carrier to secure it in the desired position. This system is available in different sizes and span centres to suit most design requirements. The lightweight suspended Click-On system is perfect for areas where structural loads are critical. Our click-on system makes it easy to install and replace battens.

### Available Profiles



CL14025



CL14010



CL03070

## GROUP 1 COMMERCIAL INTERIORS: INNOCEIL & INNOSCREEN

Innowood has been increasingly used as an alternative to real timber due to the ability to build in various levels of fire performance. Over the past few years, we have supplied to a number of projects to meet the material group

numbers 1-S or 2-s. The inclusion of the fire retardant in the extrusion process means there is minimal change to the finished look of the wood. Not only that, but as it is not a surface coating and cannot delaminate in the future.

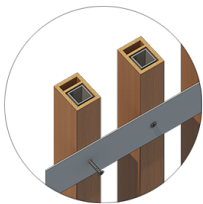
**INNOWOOD SCREEN SYSTEMS OFFER MULTIPLE BENEFITS OVER REAL TIMBER**  
InnoScreen systems offer an exciting, flexible and versatile alternative to conventional facade

designs. With the look and feel of real timber, they add a warm, natural and stylish look to enhance the appearance of any conventional wall, soffit or ceiling treatment.



### CONCEALED LOCK IN FIXING

InnoScreen's Concealed Lock-in Fixing System creates a perfectly clean line with battens that simply lock into place, concealing the single-part rear clip that can be set out to any desired spacing.



### FACE & REAR FIXING

are either face-fixed or back-fixed directly through the profile. InnoScreen Face & Rear Fixing Systems are also finished on all faces for applications where the batten is visible on both sides.

#### Available Profiles



PS05050

PS10050

RS15050

#### Available Stock Colours



American Oak Premium



Spotted Gum Premium



Dark Oak Premium

# HIGH-DENSITY FIBRE CEMENT



The **EQUITONE®** through-coloured materials enables you to achieve flawless intricate details.

**EQUITONE®** High Density Fibre cement is a mineral composite material with outstanding aesthetic and physical properties designed as cladding by and for architects.



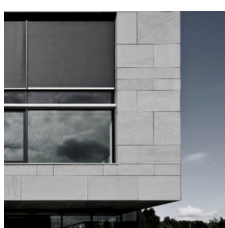
Equitone has been widely used for interiors and furniture as the fibre cement product offers a new range of possibilities in designing and constructing monolithic surfaces. The fibre cement material is through-coloured, which means the surface displays the inner texture and colour of the core material.

No matter what interior design options you explore, the through-coloured materials can be transformed into crisp, monolithic facade details. The material can be perforated using waterjet or CNC machines, large or very small cuts can be

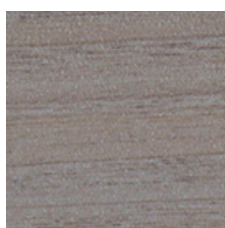
made, it can even be embossed and printed. For an interior fixing system, Sika products are used to provide an invisible fixing with glue and tape for a clean smooth look.

- **Fire Safe when mechanically fixed**
- **Integral “through colour”, no ongoing maintenance required**
- **Installed life expectancy of at least 50 years**

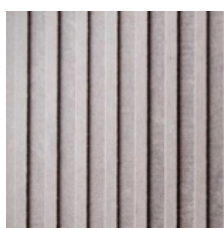
## RANGE



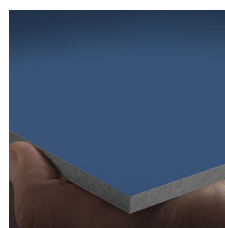
Tectiva



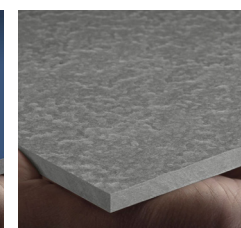
Natura



Lines

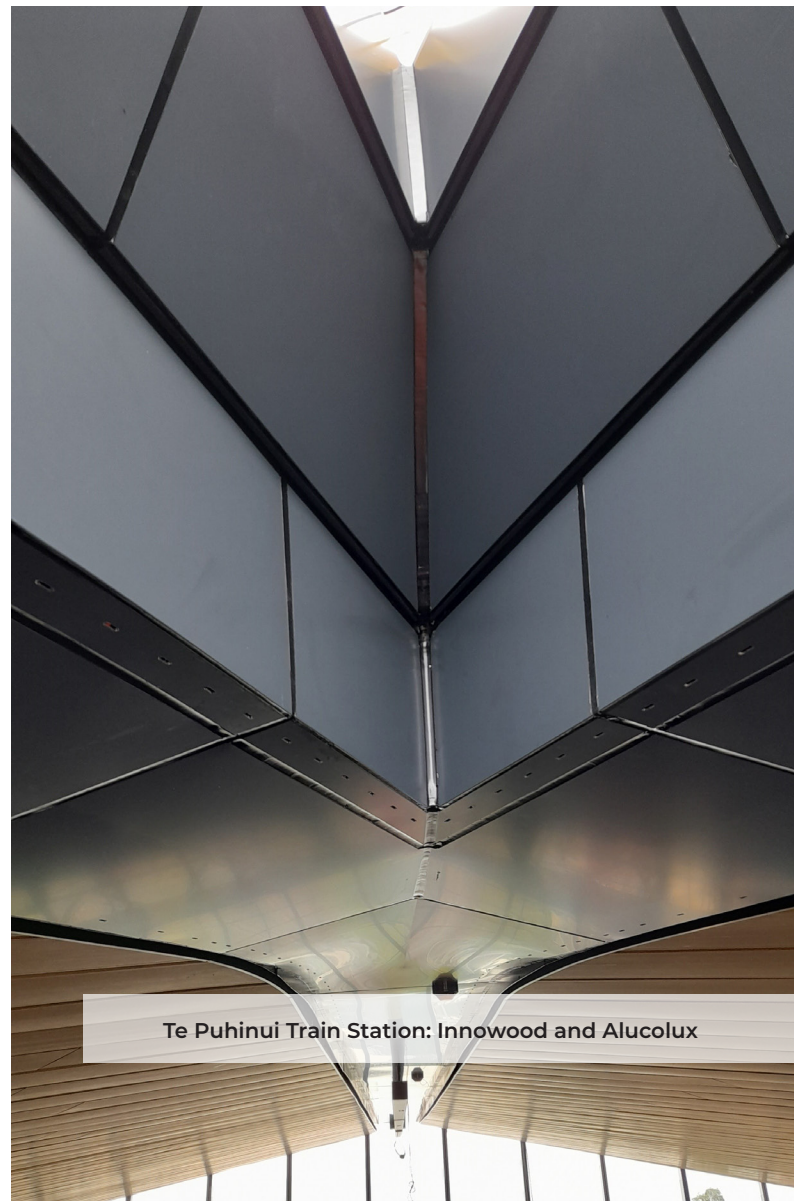


Pictura



Lunara

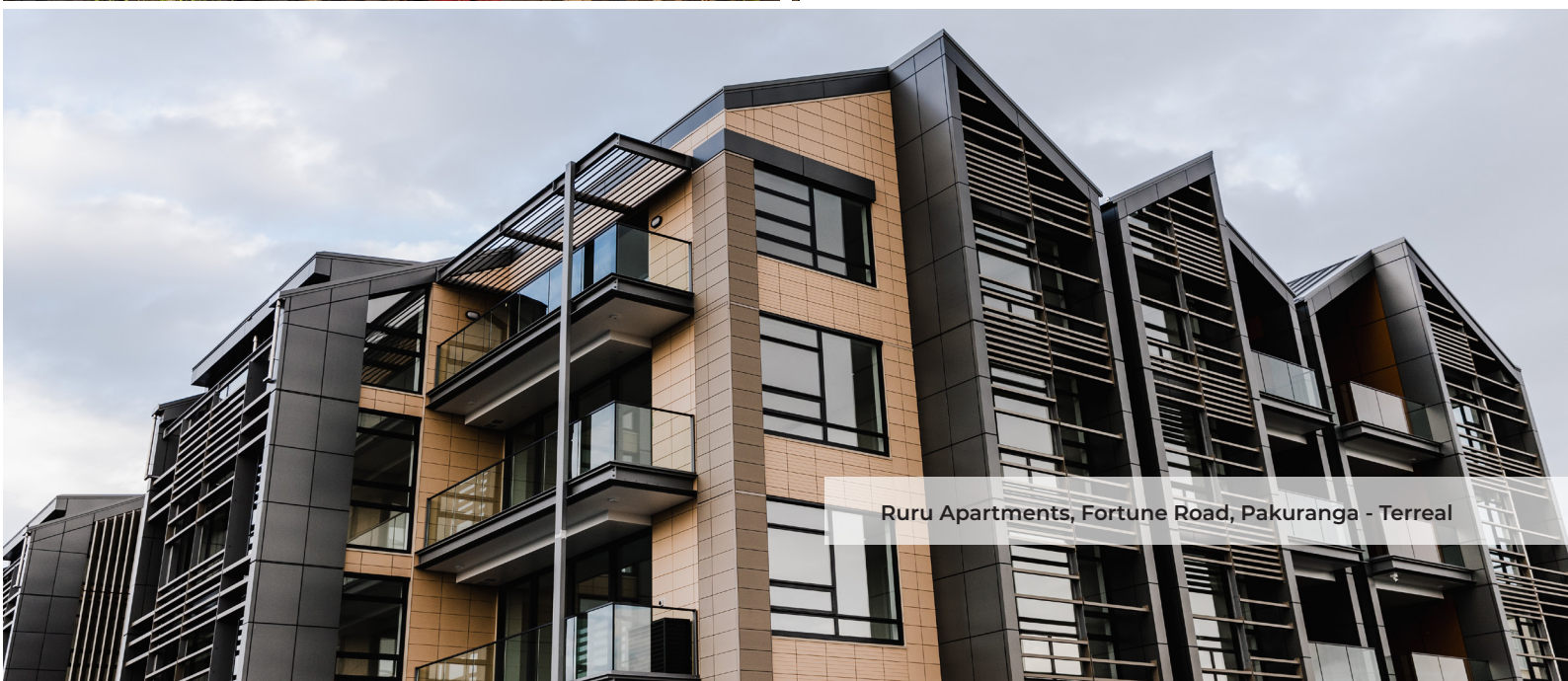




Te Puhinui Train Station: Innowood and Alucolux



The Victor Apartments: Innwood





[WWW.THEBUILDINGAGENCY.CO.NZ](http://WWW.THEBUILDINGAGENCY.CO.NZ)

A HECO GROUP COMPANY

AUCKLAND  
14 LINK DRIVE  
WAIRAU VALLEY  
PH: 09 415 2669

WAIKATO / BOP  
308 KAHIKATEA DRIVE  
FRANKTON, HAMILTON  
PH: 022 033 7331

SOUTH ISLAND  
14 LAWSON STREET  
SYDENHAM, CHCH  
PH: 022 603 3600