

METALLI
PERFORATIONS

Industrial Stair Treads



The Metalli Advantage

In choosing an industrial stair tread there are a lot more factors to consider than just cost!

Safety is first & foremost, along with, ease of installation and handling, traction / grip when in use, washing of products & of course the environment.

Here at Metalli, we believe we have a hybrid product that satisfies in all of these areas.

Safety: Our steps come standard with the industry approved yellow-nosing product. The traction, that these unique perforations offer are as good as the best available on the market.

Traction: The rims of the holes are swaged up so traction is 2nd to none. Any option you go for in the Metalli range will offer you a sure footing.

Washing: For most applications in the food industry, while traction and safety are paramount, being easy to wash down is important. With the step having flat surfaces between the traction holes, cleaning is easy and simple. There are a lot less surfaces and surface area to clean than a typical FRP product or steel grating step.

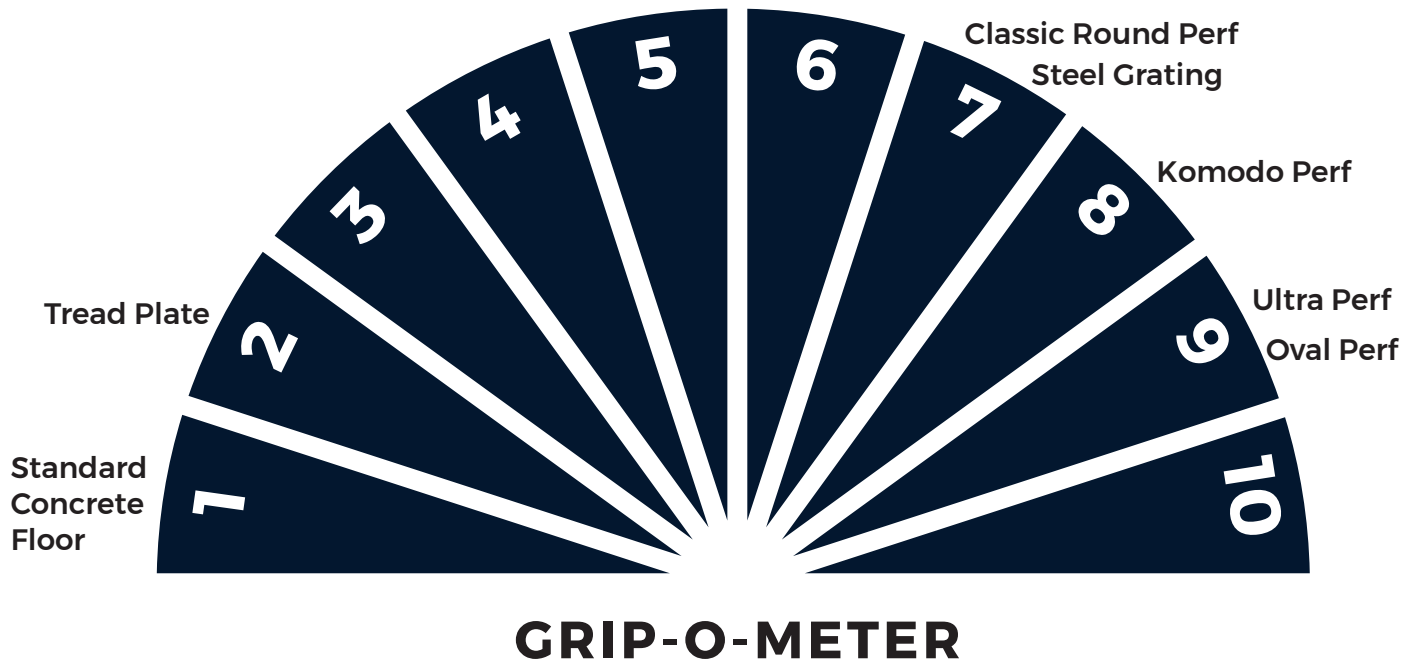
Installation: We can make to order. Bolt on or weld on options are available. No call for trimming, cutting or grinding on site with this product.

Choices: With Metalli, the options are all yours. You have the choice of material, bolt-on or weld on, width, depth, with or without yellow-nosing. You specify, we deliver!

Environment: Here at Metalli, the environment is respected and influences the way we produce and design our products. In visiting many food manufacturing sites in the earlier research days of Metalli we were interested in the washing/cleaning of these sites after every shift. Huge efforts are made as a fully dedicated cleaning crew thoroughly wash everything down. Due to the unique design of our steps a lot less hot water is used when cleaning. Some cases it is upwards of 40% savings. The raw materials we use for our steps have a smaller carbon foot print than other products used on the market.

Grip-o-meter

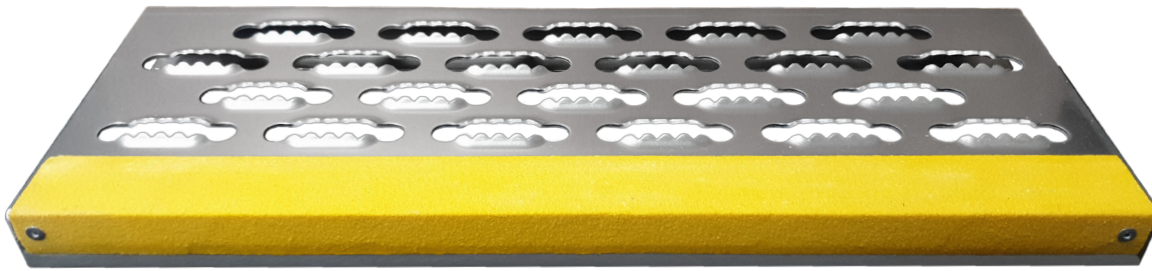
What is the Grip-o-meter? Well, it's safe to say when it comes to choosing any product these days we like to know how the product compares to others on the market. Here at Metalli we conducted some tests on a range of surfaces to gauge the effectiveness of our products. This gauge was created to best show the results found.



Contents

Komodo Perf	04
Oval Perf	05
Round Perf	06
Ultra Perf	07

Komodo Perf



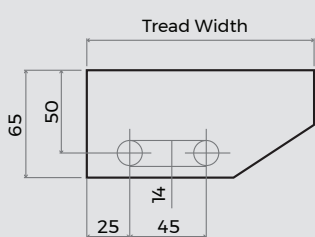
GRIP-O-METER

This is our latest option, name is due to the hole having sharp grippy teeth, much like a Komodo dragon... check it out! This product has the biggest opening, making it ideal for situations where muddy boots or snow are a big factor. This product is currently being used for steps in Canada on the oil pipe lines in the snow. The holes cut through the snow providing a safe working platform and step.

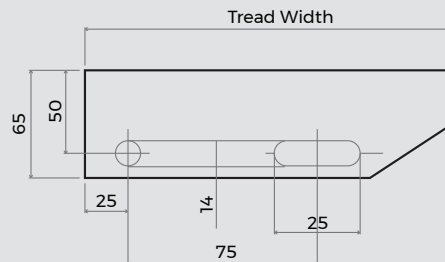
Tread Widths: All width options available in all material types

Material	600mm	750mm	900mm	Custom
Aluminium	✓	✓	✓	✓
Stainless Steel	✓	✓	✓	✓
Mild Steel	✓	✓	✓	✓

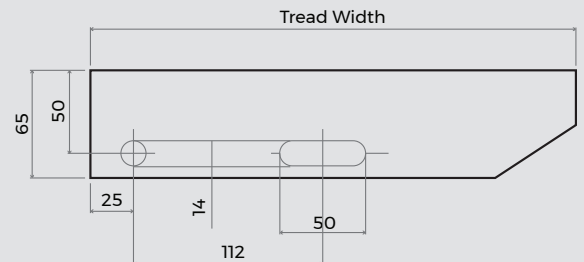
Bolt on: Hole spacings as per below diagrams



125mm Tread Widths



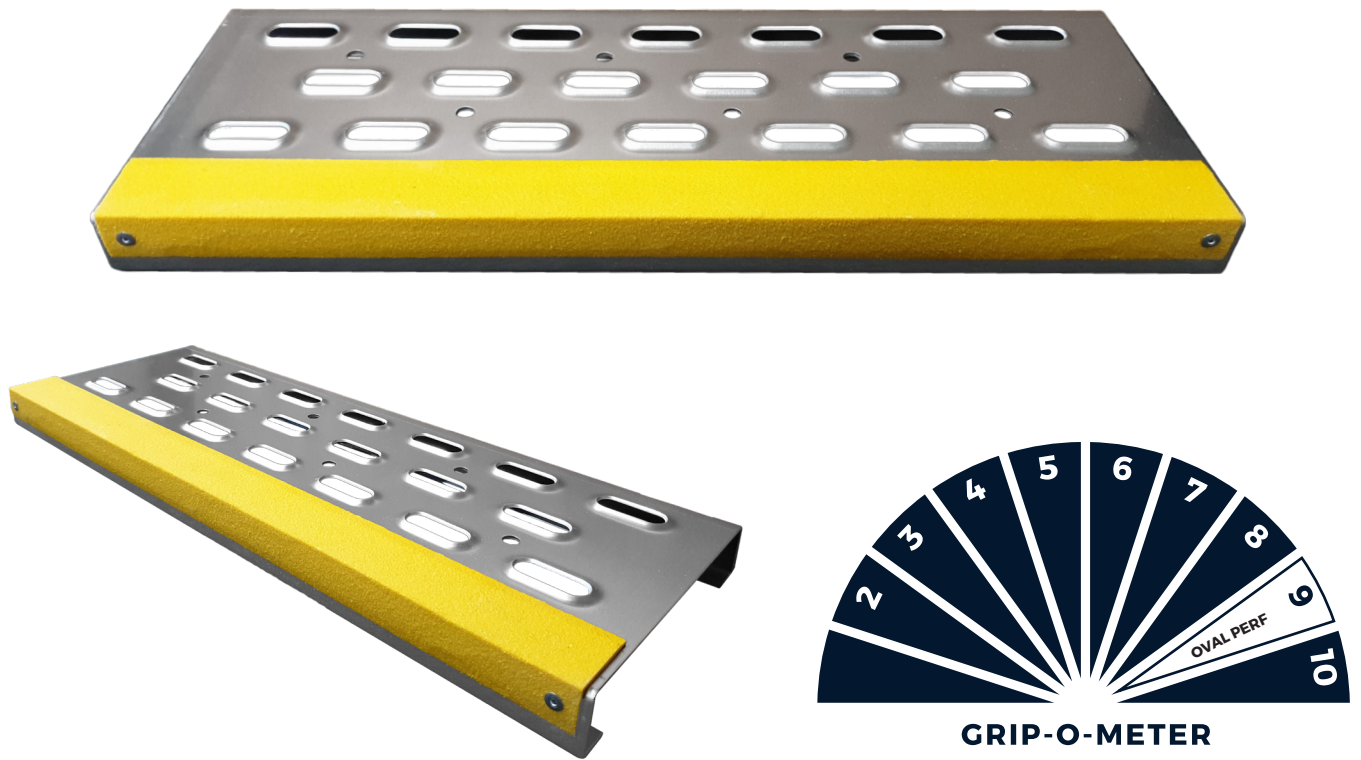
155, 165, 185mm
Tread Widths



205, 215, 245, 275, 285,
305 & 325mm Tread Widths

Note: All end plates snipped at 34° unless requested otherwise

Oval Perf

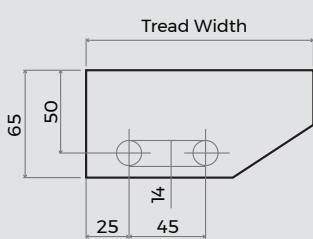


This is one of Metalli's classics, offering excellent traction and a nice uniform appearance. It works for many applications. A smaller drain hole is punched in between the swaged holes to allow the surface to drain and not pool water.

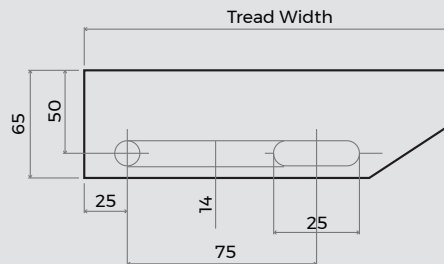
Tread Widths: All width options available in all material types

Material	600mm	750mm	900mm	Custom
Aluminium	✓	✓	✓	✓
Stainless Steel	✓	✓	✓	✓
Mild Steel	✓	✓	✓	✓

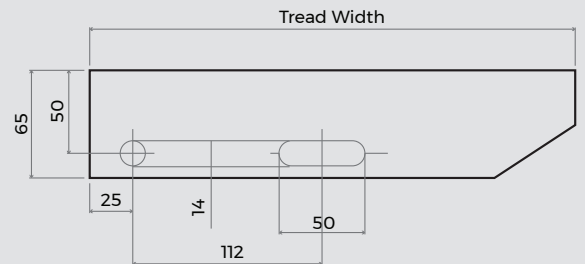
Bolt on: Hole spacings as per below diagrams



125mm Tread Widths



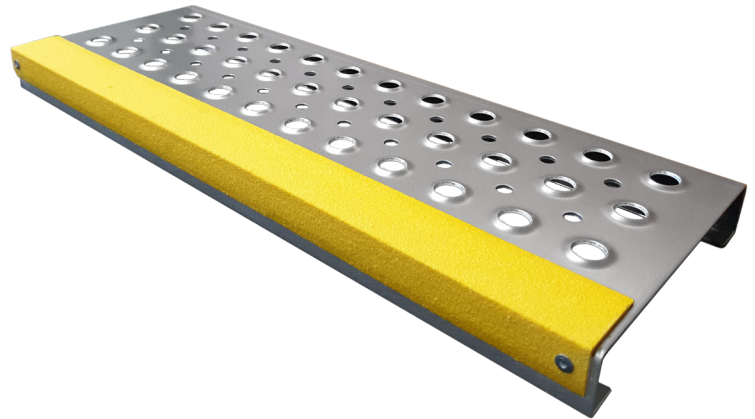
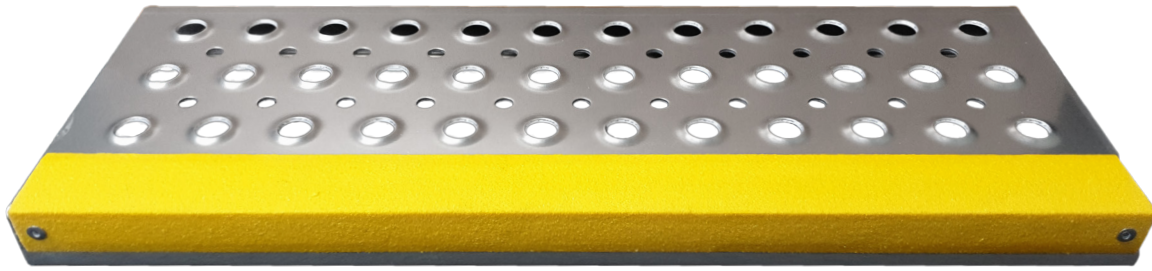
155, 165, 185mm
Tread Widths



205, 215, 245, 275, 285,
305 & 325mm Tread Widths

Note: All end plates snipped at 34° unless requested otherwise

Round Perf



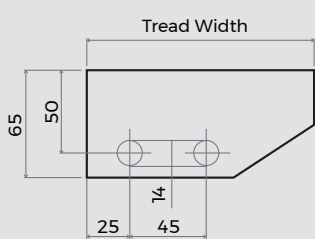
GRIP-O-METER

This is probably one of the first perforated designs for traction that hit the market. Round Perf offers a superior traction to tread-plate or similar products, is self-draining and presents a uniform pattern. This perforation is well known and widely used for steps and walkways in the food industry.

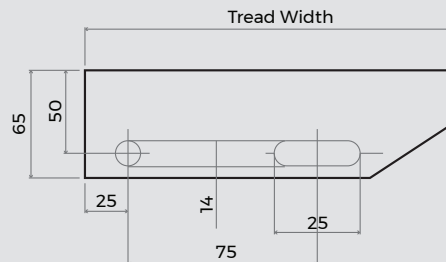
Tread Widths: All width options available in all material types

Material	600mm	750mm	900mm	Custom
Aluminium	✓	✓	✓	✓
Stainless Steel	✓	✓	✓	✓
Mild Steel	✓	✓	✓	✓

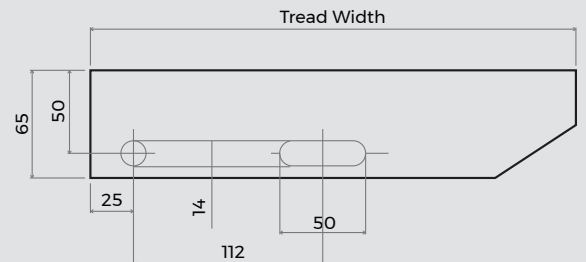
Bolt on: Hole spacings as per below diagrams



125mm Tread Widths



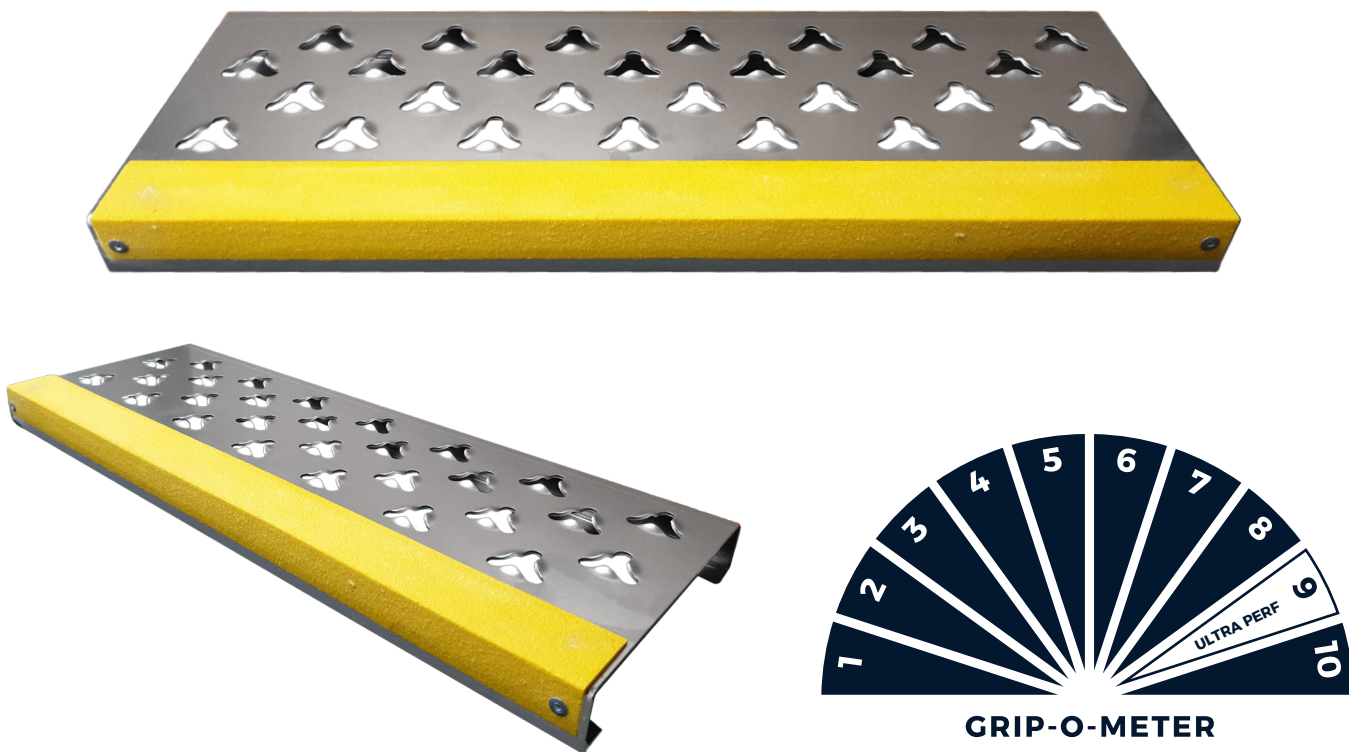
155, 165, 185mm
Tread Widths



205, 215, 245, 275, 285,
305 & 325mm Tread Widths

Note: All end plates snipped at 34° unless requested otherwise

Ultra Perf

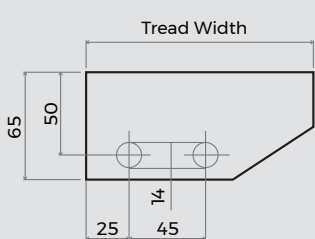


This option is a very smart and well proven design. It's self-draining and offers ultimate traction in every direction. Ultra Perf makes washing down easy and efficient compared to other products on market. This design has been very popular on working platforms and steps across the globe in various industries.

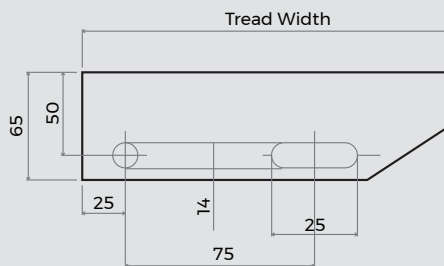
Tread Widths: All width options available in all material types

Material	600mm	750mm	900mm	Custom
Aluminium	✓	✓	✓	✓
Stainless Steel	✓	✓	✓	✓
Mild Steel	✓	✓	✓	✓

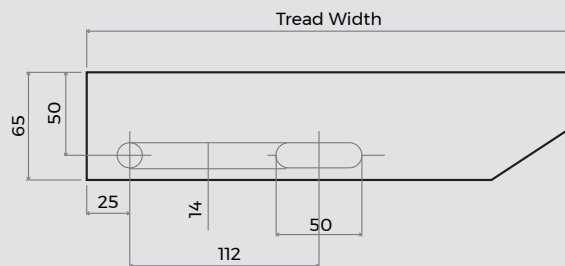
Bolt on: Hole spacings as per below diagrams



125mm Tread Widths

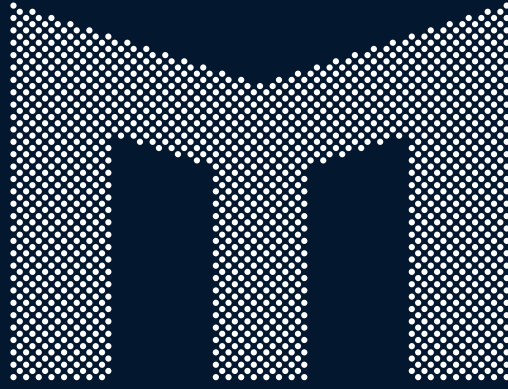


155, 165, 185mm
Tread Widths



205, 215, 245, 275, 285,
305 & 325mm Tread Widths

Note: All end plates snipped at 34° unless requested otherwise



METALLI
PERFORATIONS

0800 777 267 | METALLI.CO.NZ

