

straightcurve®

Steel garden edging, retaining & planters

Inspiring Creativity!



www.gardenedging.co.nz



A close-up photograph of a garden bed. In the foreground, there is a layer of white and light-colored rocks. A metal edging runs across the middle ground, separating the rocks from a bed of dark mulch. Behind the edging, there is a bush with green leaves and some orange-tinted new growth. In the background, there are more green plants and a white, textured surface.

Start your creative journey!

Whether it's off a plan or off the cuff,
it's never been as easy as this. Be bold,
be stylish, be innovative, be playful!
Start your next creative journey here.



Contents

INTRODUCTION

- ⊕ Solution types and finishes 4

IN-GROUND SOLUTIONS

- ⊕ 75mm Rigidline™ 8
- ⊕ 75mm Flexline™ 9
- ⊕ 100mm Rigidline™ 10
- ⊕ 100mm Flexline™ 11
- ⊕ 150mm Rigidline™ 12
- ⊕ 150mm Flexline™ 13
- ⊕ 100mm Hardline™ - HEAVY DUTY 14
- ⊕ 150mm Hardline™ - HEAVY DUTY 15

ABOVE GROUND SOLUTIONS

- ⊕ 240mm Rigidline™ 18
- ⊕ 240mm Flexline™ 19
- ⊕ 400mm Rigidline™ 20
- ⊕ 400mm Flexline™ 21
- ⊕ 560mm Rigidline™ 22
- ⊕ 560mm Flexline™ 23

RAISED PLANTER SOLUTIONS

- ⊕ 400mm high fixed height planter box 26
- ⊕ 560mm high fixed height planter box 27

OUR DIFFERENCE

- ⊕ Why use Straightcurve® 28
- ⊕ Entire Product list 30



Decisions & decisions... Straight or curved?

Deciding what you need or simply seeking inspiration? At some point there comes a time to choose if the lines in your garden will be straight or curving. The product range is designed to have solutions for both, so it's helpful to know just what you want!



STRAIGHT

Hardline™ is the heavy duty option for strong straights with a foot to make them sturdy, it's so grounding!

Rigidline™ is suited for firm straight lines as it is more rigid than Flexline™.



CURVED

Use the Flexline™ range for organic and flowing lines. As they flex rather than bend you can make all curves effortlessly by hand on site as you go, it comes naturally!



COMBINATIONS

It's OK to have some of each in a garden too. Our Rigidline™ will join with our Flexline™ of the same height.

Finish choices

The entire Straightcurve® range is available in a weathering steel or galvanised finish. Perfect for whatever look you are going for!



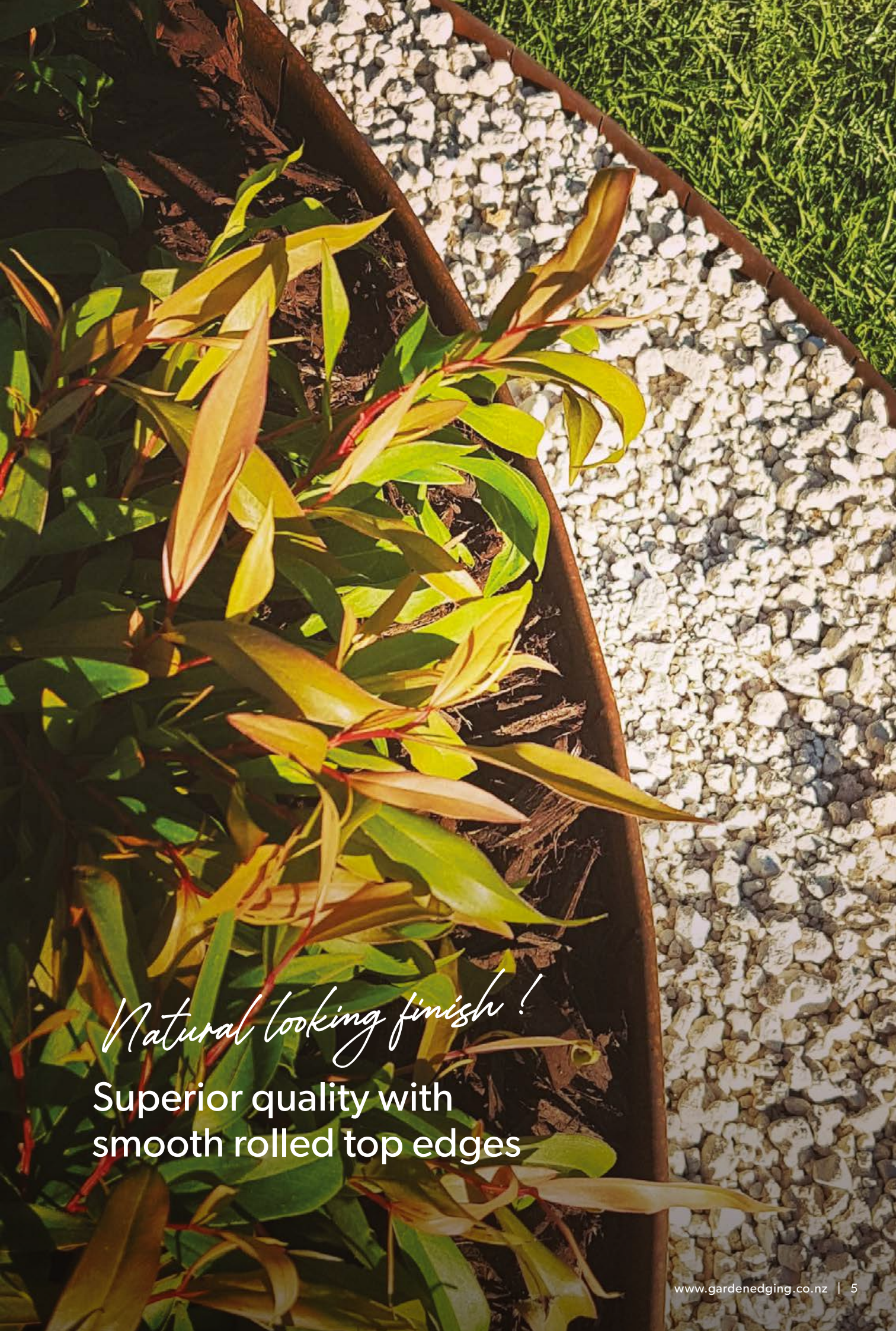
WEATHERING STEEL

Weathering steel is an alloy that develops a rusty-looking protective patina, giving a natural finish.



GALVANISED STEEL

The galvanised look is for people who prefer a grey/silver finish and is longer lasting.



Natural looking finish!

Superior quality with
smooth rolled top edges

A modern garden bed featuring a grey concrete wall, a bed of light-colored stones, and a wooden deck. The scene is set outdoors with a building and plants in the background.

Got to keep them separated!

Use the Hardline™ range for strong straight lines that stay true over time.

straightcurve®

In-ground solutions

Perfect for!

- ✓ Lawn barriers
- ✓ Pathway edges
- ✓ Separating materials like stone and mulch



Please visit our website for full terms and conditions

In-ground solutions



75mm high x 2200mm Rigidline™

IDEAL FOR

- ✔ Straight lines and geometric designs
- ✔ Straight garden paths and lawn areas
- ✔ Decorative stone areas
- ✔ Angular tree surrounds
- ✔ Hard soils where trenching is difficult

USE AS

- ✔ Divider between gravels/woodchips/ mulches etc
- ✔ Paving, compacted stone and artificial turf edge
- ✔ Lawn edge for non-invasive grasses



RL075WS WEATHERING STEEL
RL075GS GALVANISED STEEL

All specifications and installation instructions can also be found here:
www.gardenedging.co.nz/download/4240/

Download here!

MORE INFO & INSTALL GUIDE





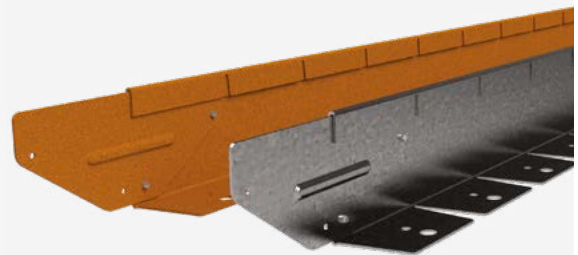
75mm high x 2200mm Flexline™

IDEAL FOR

- ✓ Organic and flowing lines
- ✓ Meandering garden paths
- ✓ Decorative stone areas
- ✓ Creating curved lawn areas
- ✓ Rounded tree surrounds
- ✓ Hard soils where trenching is difficult

USE AS

- ✓ Divider between gravels/woodchips/ mulches etc
- ✓ Paving, compacted stone and artificial turf edge
- ✓ Lawn edge for non-invasive grasses



FLO75WS WEATHERING STEEL
FLO75GS GALVANISED STEEL



All specifications and installation instructions can also be found here:
www.gardenedging.co.nz/download/4216/

Download here!

MORE INFO & INSTALL GUIDE



In-ground solutions



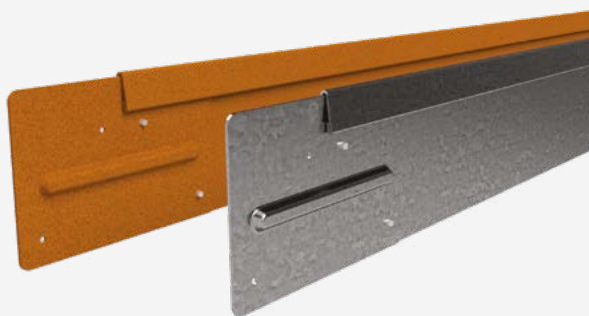
100mm high x 2200mm Rigidline™

IDEAL FOR

- ✔ Straight lines and geometric designs
- ✔ Straight garden paths and lawn areas
- ✔ Decorative stone and mulch areas
- ✔ Hard soils where trenching is difficult
- ✔ In-ground tree surrounds

USE AS

- ✔ Lawn barrier for non-invasive grasses
- ✔ Divider between gravels/woodchips/mulch etc
- ✔ Low feature bed



RL100WS WEATHERING STEEL
RL100GS GALVANISED STEEL

All specifications and installation instructions can also be found here:
www.gardenedging.co.nz/download/4260/

Download here!

MORE INFO & INSTALL GUIDE





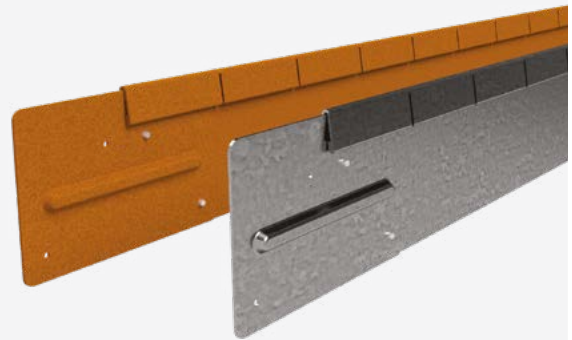
100mm high x 2200mm Flexline™

IDEAL FOR

- ✔ Organic and flowing lines
- ✔ Meandering garden paths
- ✔ Creating curved lawn areas
- ✔ Decorative stone and mulch areas
- ✔ Hard soils where trenching is difficult
- ✔ Gently sloping gardens

USE AS

- ✔ Lawn barrier for non-invasive grasses
- ✔ Divider between gravels/woodchips/mulch etc
- ✔ Low feature bed



FL100WS WEATHERING STEEL
FL100GS GALVANISED STEEL



All specifications and installation instructions can also be found here:
www.gardenedging.co.nz/download/4219/

Download here!

MORE INFO & INSTALL GUIDE



In-ground solutions



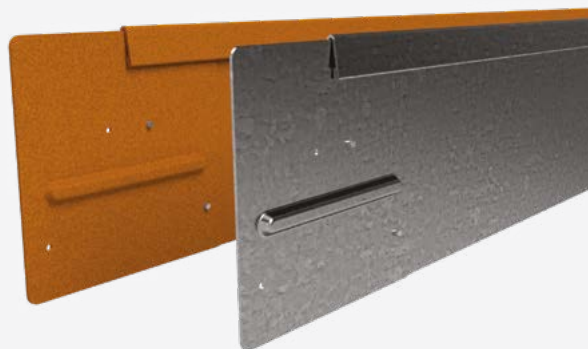
150mm high x 2200mm Rigidline™

IDEAL FOR

- ✔ Straight lines and geometric designs
- ✔ Straight garden paths and lawn areas
- ✔ Decorative stone and mulch areas
- ✔ Slightly raised or In-ground tree surrounds
- ✔ Keeping mulch off paths

USE AS

- ✔ Lawn barrier for invasive grasses
- ✔ Divider between gravels/woodchips/mulch etc
- ✔ Low feature bed



RL150WS WEATHERING STEEL
RL150GS GALVANISED STEEL

All specifications and installation instructions can also be found here:
www.gardenedging.co.nz/download/4243/

Download here!

MORE INFO & INSTALL GUIDE





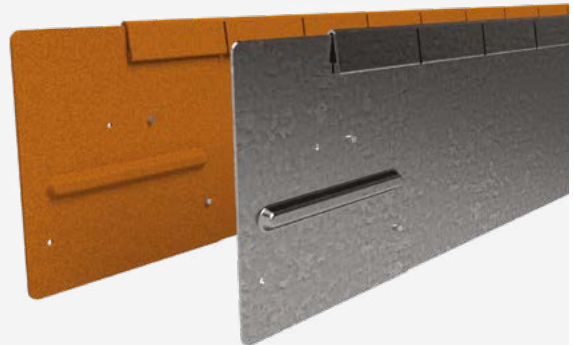
150mm high x 2200mm Flexline™

IDEAL FOR

- ✔ Organic and flowing lines
- ✔ Meandering garden paths
- ✔ Creating curved lawn areas
- ✔ Slightly raised or In-ground tree rings
- ✔ Keeping mulch off paths
- ✔ Gently sloping gardens

USE AS

- ✔ Lawn barrier for invasive grasses
- ✔ Divider between gravels/woodchips/mulch etc
- ✔ Low feature bed



FL150WS WEATHERING STEEL
FL150GS GALVANISED STEEL



All specifications and installation
instructions can also be found here:
www.gardenedging.co.nz/download/4222/

*Download
here!*
→

MORE INFO & INSTALL GUIDE



In-ground solutions

HEAVY DUTY

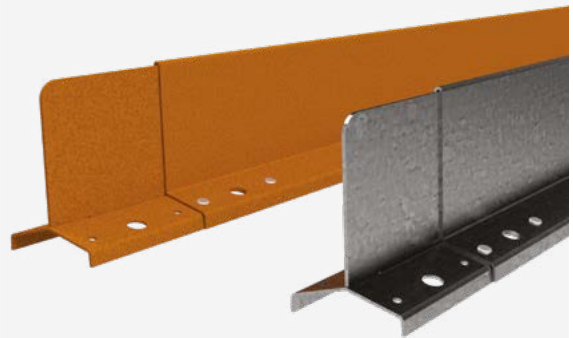
100mm high x 2200mm Hardline™

IDEAL FOR

- ✔ Designs featuring straight lines
- ✔ Small formal courtyard gardens
- ✔ Angular tree surrounds
- ✔ Discreet lines for Perfectionists!

USE AS

- ✔ Lawn barrier for non-invasive grasses
- ✔ Divider between gravels, wood chips, mulch etc
- ✔ Lock in paving or compacted/loose fill paths
- ✔ Low feature bed borders



HL100WS WEATHERING STEEL
HL100GS GALVANISED STEEL

All specifications and installation instructions can also be found here:
www.gardenedging.co.nz/download/4257/

Download here!

MORE INFO & INSTALL GUIDE



HEAVY DUTY

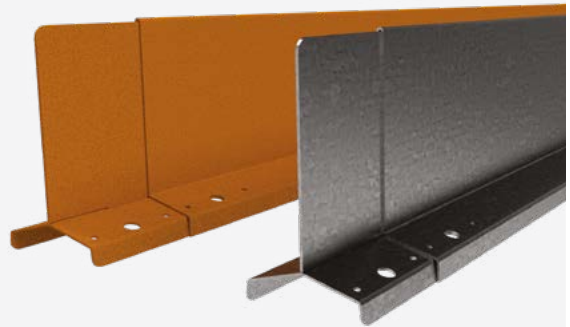
150mm high x 2200mm Hardline™

IDEAL FOR

- ✔ Designs featuring straight lines
- ✔ Small formal courtyard gardens
- ✔ Angular tree surrounds
- ✔ Showing a little more edge

USE AS

- ✔ Lawn barrier for invasive grasses
- ✔ Divider between gravels, wood chips, mulch etc
- ✔ Lock in paving or compacted/loose fill paths
- ✔ Low feature bed borders



HL150WS WEATHERING STEEL
HL150GS GALVANISED STEEL

All specifications and installation instructions can also be found here:
www.gardenedging.co.nz/download/4235/

Download here!

MORE INFO & INSTALL GUIDE





Superior quality!

Suitable for soft, hard
or concrete surfaces.

straightcurve®

Above ground solutions

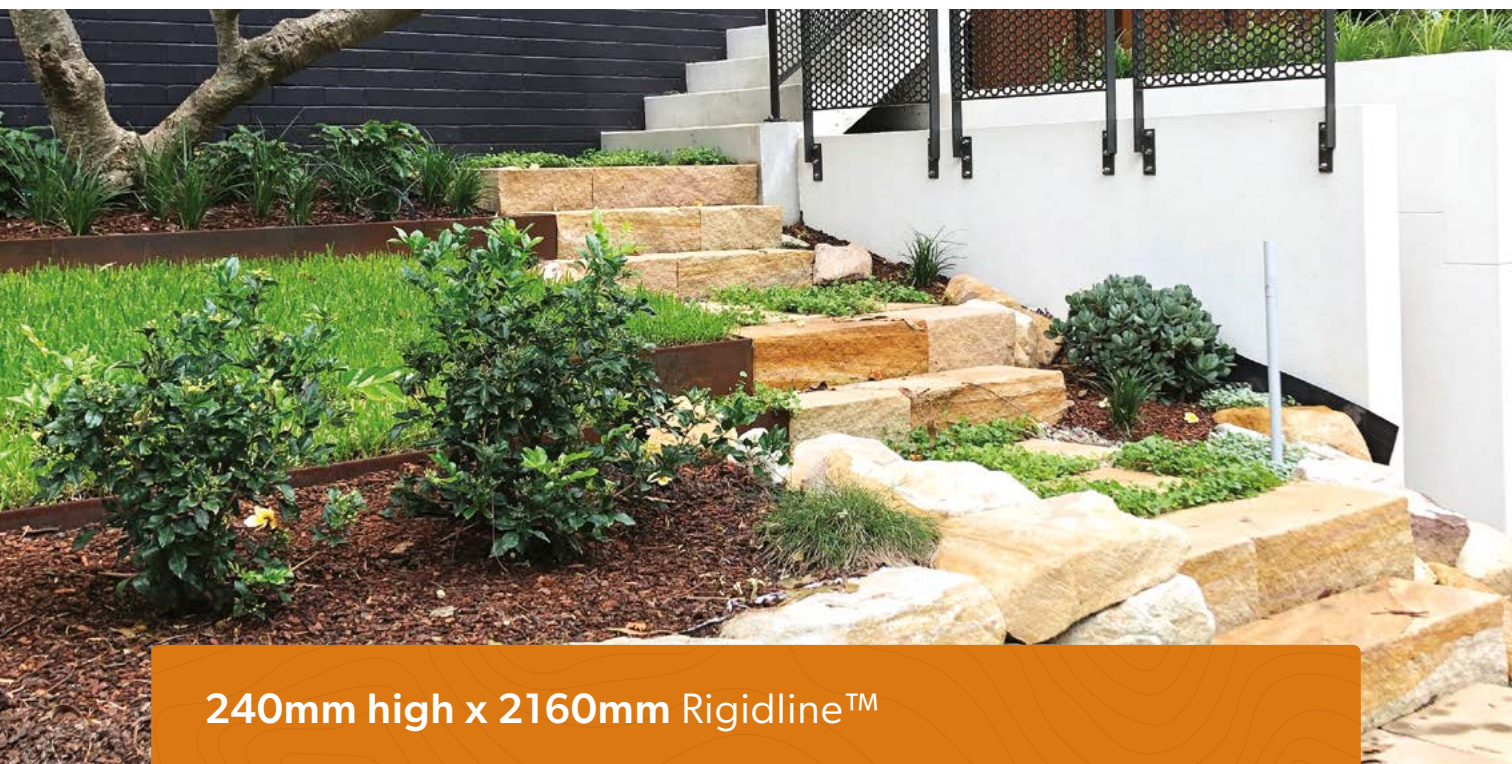
Perfect for!

- ✓ Raised garden beds
- ✓ Steps and multi levels
- ✓ Retaining walls



Please visit our website for full terms and conditions

Above ground solutions



240mm high x 2160mm Rigidline™

IDEAL FOR

- ✔ Straight lines and geometric designs
- ✔ Raised, straight-sided feature beds
- ✔ Terracing a gentle slope
- ✔ Creating straight step faces
- ✔ Hard surface mounting i.e. rooftops/decking

USE AS

- ✔ Raised border edging
- ✔ Low retainers and steps
- ✔ High set lawn barrier for invasive grasses



RL240WS WEATHERING STEEL
RL240GS GALVANISED STEEL

All specifications and installation instructions can also be found here:
www.gardenedging.co.nz/download/4248/

Download here!

MORE INFO & INSTALL GUIDE





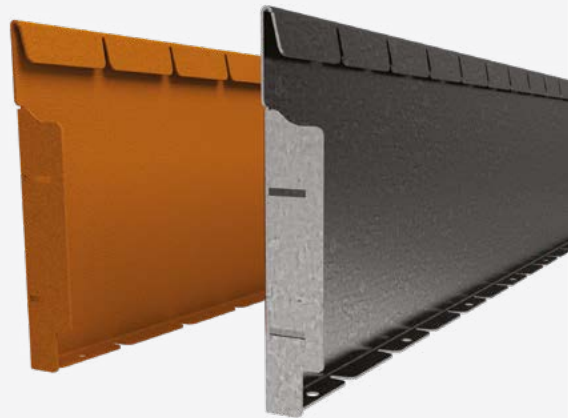
240mm high x 2160mm Flexline™

IDEAL FOR

- ✔ Organic and flowing lines
- ✔ Raised, curved feature gardens
- ✔ Terracing a gentle slope
- ✔ Creating curved step faces
- ✔ Hard surface mounting i.e. rooftops/decking

USE AS

- ✔ Raised border edging
- ✔ Low retainers and steps
- ✔ High set lawn barrier for invasive grasses



FL240WS WEATHERING STEEL
FL240GS GALVANISED STEEL



All specifications and installation
instructions can also be found here:
www.gardenedging.co.nz/download/4225/

*Download
here!*

MORE INFO & INSTALL GUIDE



Above ground solutions



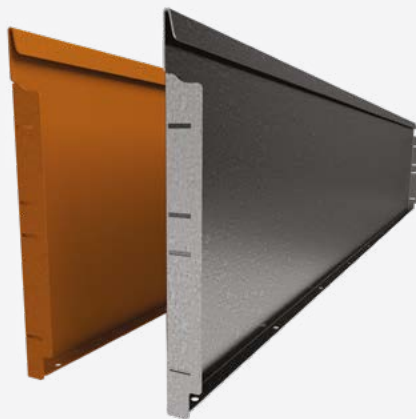
400mm high x 2160mm Rigidline™

IDEAL FOR

- ✔ Straight lines and geometric designs
- ✔ Raised, straight-sided feature gardens
- ✔ Kitchen garden beds
- ✔ Straight run terraces/retainers
- ✔ Hard surface mounting i.e. rooftops/decking

USE AS

- ✔ Raised border edging
- ✔ Medium height retainers
- ✔ Closed shape garden beds



RL400WS WEATHERING STEEL
RL400GS GALVANISED STEEL

All specifications and installation instructions can also be found here:
www.gardenedging.co.nz/download/4262/

Download here!

MORE INFO & INSTALL GUIDE





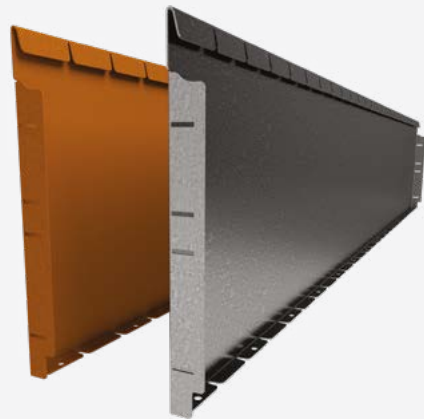
400mm high x 2160mm Flexline™

IDEAL FOR

- ✓ Organic and flowing lines
- ✓ Raised, curved feature gardens
- ✓ Kitchen garden beds
- ✓ Curved, sweeping terraces/retainers
- ✓ Hard surface mounting i.e. rooftops/decking

USE AS

- ✓ Raised border edging
- ✓ Medium height retainers
- ✓ Closed shape garden beds



FL400WS WEATHERING STEEL
FL400GS GALVANISED STEEL



All specifications and installation instructions can also be found here:
www.gardenedging.co.nz/download/4229/

Download here!



MORE INFO & INSTALL GUIDE



Above ground solutions



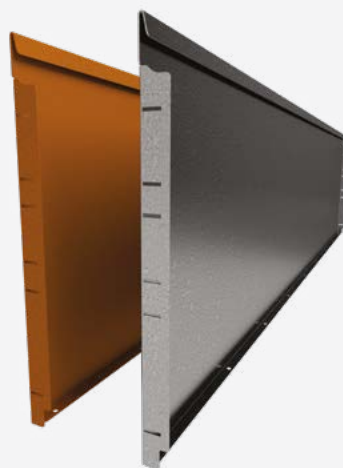
560mm high x 2160mm Rigidline™

IDEAL FOR

- ✔ Straight lines and geometric designs
- ✔ Raised, straight-sided feature gardens
- ✔ Kitchen garden beds
- ✔ Straight run terraces/retainers
- ✔ Hard surface mounting i.e. rooftops/decking

USE AS

- ✔ Raised border edging
- ✔ Medium height retainers
- ✔ Closed shape garden beds



RL560WS WEATHERING STEEL
RL560GS GALVANISED STEEL

All specifications and installation instructions can also be found here:
www.gardenedging.co.nz/download/4251/

Download here!

MORE INFO & INSTALL GUIDE





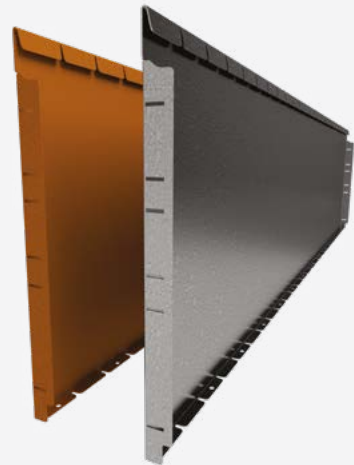
560mm high x 2160mm Flexline™

IDEAL FOR

- ✓ Organic and flowing lines
- ✓ Raised, curved feature gardens
- ✓ Kitchen garden beds
- ✓ Curved, sweeping terraces/retainers
- ✓ Hard surface mounting i.e. rooftops/decking

USE AS

- ✓ Raised border edging
- ✓ Medium height retainers
- ✓ Closed shape garden beds



FL560WS WEATHERING STEEL
FL560GS GALVANISED STEEL



All specifications and installation
instructions can also be found here:
www.gardenedging.co.nz/download/4232/

*Download
here!*
→

MORE INFO & INSTALL GUIDE



A garden bed with a rusted metal border. The border has the word "welvæ" in large, white, 3D block letters. The garden bed is filled with light-colored gravel and contains a small, round, dark-colored planter. In the background, there is a thatched wall made of dried reeds or straw, and a green, feathery plant on the left side.

welvæ

What can't you do?!

Neat and attractive finish
with hidden fixings.

straightcurve®

Raised planter solutions

Perfect for!

- ✓ Planter boxes
- ✓ Raised garden beds
- ✓ Straight retaining walls



Please visit our website for full terms and conditions

Fixed height planter box

Hidden Fixings with bolt down capabilities.



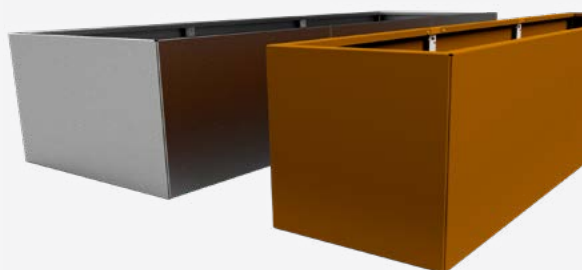
400mm high fixed height planter box

IDEAL FOR

- ✔ Square/Rectangular free standing beds
- ✔ Retaining walls
- ✔ Long 'garden barrier' beds
- ✔ Hard surface Areas, i.e. patios and rooftops
- ✔ Tables and bench seats (create own top)
- ✔ L and U shaped planter beds

USE AS

- ✔ Raised garden beds and planters
- ✔ Retainers (One wall or Closed Shape)
- ✔ Outdoor furniture bases
- ✔ Storage boxes



AVAILABLE PANEL LENGTHS

400MM	600MM	800MM	1000MM	1200MM	2000MM
-------	-------	-------	--------	--------	--------

Combine panels to make any size in 200mm increments

FHL400WS WEATHERING STEEL
FHL400GS GALVANISED STEEL

All specifications and installation instructions can also be found here:
www.gardenedging.co.nz/download/4210/

Download here!

MORE INFO & INSTALL GUIDE





560mm high fixed height planter box

IDEAL FOR

- ✔ Square/Rectangular free standing beds
- ✔ Retaining walls
- ✔ Long 'garden barrier' beds
- ✔ Hard surface Areas, i.e. patios and rooftops
- ✔ Tables and bench seats (create own top)
- ✔ L and U shaped planter beds

USE AS

- ✔ Raised garden beds and planters
- ✔ Retainers (One wall or Closed Shape)
- ✔ Outdoor furniture bases
- ✔ Storage boxes



AVAILABLE PANEL LENGTHS

400MM	600MM	800MM	1000MM	1200MM	2000MM
-------	-------	-------	--------	--------	--------

Combine panels to make any size in 200mm increments

FHL560WS WEATHERING STEEL
FHL560GS GALVANISED STEEL

All specifications and installation instructions can also be found here:
www.gardenedging.co.nz/download/4213/

Download here!

MORE INFO & INSTALL GUIDE



Why use Straightcurve®?



Jaim - Green Horizons Landscape Construction



Alessio - Alessio's Gardens



Jaiden - Deep Green Landscaping

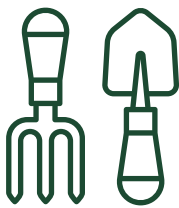


Mirek - Waterwise Landscaping

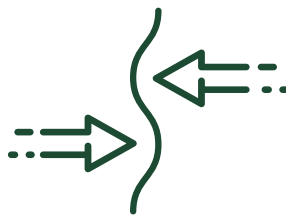


Wanda - Wanda's Gardening & Landscaping

Landscaper & DIY user benefits



DESIGNED FOR DIY



NATURALLY FLEXIBLE, EASY TO CURVE



STRAIGHT LINES STAY TRUE



DISCREET, NEAT JOINING



QUICK TO INSTALL



















SMOOTH ROLLED TOP EDGES

GREAT BENEFITS

- ✓ Easy and quick installation
- ✓ Durable and strong – won't crack, warp or shift later
- ✓ No need to concrete edges in place
- ✓ Each connection is always right
- ✓ Easy combinations of rigid and flexible edges.
- ✓ No welding required
- ✓ Suitable for soft, hard or concrete surfaces
- ✓ Products made for straight lines and curves
- ✓ Sold in sets with stakes and connectors.
- ✓ Natural looking finish

IN-GROUND SOLUTIONS

IMAGE	PREFIX	HEIGHT MM	MATERIAL	LENGTH (S) MM	USE AS	IDEAL FOR	ACCESSORIES (NOT INCLUDED)
	RL	75	WS / GS	2200	<ul style="list-style-type: none"> - Divider between gravels/woodchips/ mulches etc - Paving, compacted stone and artificial turf edge - Lawn edge for non-invasive grasses 	<ul style="list-style-type: none"> - Straight lines and geometric designs - Straight garden paths and lawn areas - Decorative stone areas - Angular tree surrounds - Hard soils where trenching is difficult 	<ul style="list-style-type: none"> - Pre-made corners - Fixing screws/ rivets
	FL	75	WS / GS	2200	<ul style="list-style-type: none"> - Divider between gravels/woodchips/ mulches etc - Paving, compacted stone and artificial turf edge - Lawn edge for non-invasive grasses 	<ul style="list-style-type: none"> - Organic and flowing lines - Meandering garden paths - Decorative stone areas - Creating curved lawn areas - Rounded tree surrounds - Hard soils where trenching is difficult 	<ul style="list-style-type: none"> - Fixing screws/ rivets
	RL	100	WS / GS	2200	<ul style="list-style-type: none"> - Lawn barrier for non-invasive grasses - Divider between gravels/woodchips/ mulch etc - Low feature bed 	<ul style="list-style-type: none"> - Straight lines and geometric designs - Straight garden paths and lawn areas - Decorative stone and mulch areas - Hard soils where trenching is difficult - In-ground tree surrounds 	<ul style="list-style-type: none"> - Pre-made corners - Hard Surface Fixing Brackets - Fixing screws/ rivets
	FL	100	WS / GS	2200	<ul style="list-style-type: none"> - Lawn barrier for non-invasive grasses - Divider between gravels/woodchips/ mulch etc - Low feature bed 	<ul style="list-style-type: none"> - Organic and flowing lines - Meandering garden paths - Creating curved lawn areas - Decorative stone and mulch areas - Hard soils where trenching is difficult - Gently sloping gardens 	<ul style="list-style-type: none"> - Pre-made corners - Hard Surface Fixing Brackets - Fixing screws/ rivets
	RL	150	WS / GS	2200	<ul style="list-style-type: none"> - Lawn barrier for invasive grasses - Divider between gravels/woodchips/ mulch etc - Low feature bed 	<ul style="list-style-type: none"> - Straight lines and geometric designs - Straight garden paths and lawn areas - Decorative stone and mulch areas - Slightly raised or in-ground tree surrounds - Keeping mulch off paths 	<ul style="list-style-type: none"> - Pre-made corners - Hard Surface Fixing Brackets - Fixing screws/ rivets
	FL	150	WS / GS	2200	<ul style="list-style-type: none"> - Lawn barrier for invasive grasses - Divider between gravels/woodchips/ mulch etc - Low feature bed 	<ul style="list-style-type: none"> - Organic and flowing lines - Meandering garden paths - Creating curved lawn areas - Slightly raised or in-ground tree rings - Keeping mulch off paths - Gently sloping gardens 	<ul style="list-style-type: none"> - Pre-made corners - Hard Surface Fixing Brackets - Fixing screws/ rivets
	HL	100	WS / GS	2200	<ul style="list-style-type: none"> - Lawn barrier for non-invasive grasses - Divider between gravels, wood chips, mulch etc - Lock in paving or compacted/loose fill paths - Low feature bed borders 	<ul style="list-style-type: none"> - Designs featuring straight lines - Small formal courtyard gardens - Angular tree surrounds - Discreet lines for Perfectionists! 	<ul style="list-style-type: none"> - Pre-made corners - Fixing screws/ rivets
	HL	150	WS / GS	2200	<ul style="list-style-type: none"> - Lawn barrier for invasive grasses - Divider between gravels, wood chips, mulch etc - Lock in paving or compacted/loose fill paths - Low feature bed borders 	<ul style="list-style-type: none"> - Designs featuring straight lines - Small formal courtyard gardens - Angular tree surrounds - Showing a little more edge 	<ul style="list-style-type: none"> - Pre-made corners - Fixing screws/ rivets
	RL	240	WS / GS	2160	<ul style="list-style-type: none"> - Raised border edging - Low retainers and steps - High set lawn barrier for invasive grasses 	<ul style="list-style-type: none"> - Straight lines and geometric designs - Raised, straight-sided feature beds - Terracing a gentle slope - Creating straight step faces - Hard surface mounting i.e. rooftops/decking 	<ul style="list-style-type: none"> - Pre-made corners - Anchor sets - Hard surface Fixing Bracket + Screws

	FL	240	WS / GS	2160	<ul style="list-style-type: none"> - Raised border edging - Low retainers and steps - High set lawn barrier for invasive grasses 	<ul style="list-style-type: none"> - Organic and flowing lines - Raised, curved feature gardens - Terracing a gentle slope - Creating curved step faces - Hard surface mounting i.e. rooftops/decking 	<ul style="list-style-type: none"> - Pre-made corners - Anchor sets - Hard surface Fixing Bracket + Screws
	RL	400	WS / GS	2160	<ul style="list-style-type: none"> - Raised border edging - Medium height retainers - Closed shape garden beds 	<ul style="list-style-type: none"> - Straight lines and geometric designs - Raised, straight-sided feature gardens - Kitchen garden beds - Straight run terraces/retainers - Hard surface mounting i.e. rooftops/decking 	<ul style="list-style-type: none"> - Pre-made corners - Large Anchor set + Screws - Bracing Set - Joining Sleeve + Screws
	FL	400	WS / GS	2160	<ul style="list-style-type: none"> - Raised border edging - Medium height retainers - Closed shape garden beds 	<ul style="list-style-type: none"> - Organic and flowing lines - Raised, curved feature gardens - Kitchen garden beds - Curved, sweeping terraces/retainers - Hard surface mounting i.e. rooftops/decking 	<ul style="list-style-type: none"> - Pre-made corners - Large Anchor set + Screws - Bracing Set - Joining Sleeve + Screws
	RL	560	WS / GS	2160	<ul style="list-style-type: none"> - Raised border edging - Medium height retainers - Closed shape garden beds 	<ul style="list-style-type: none"> - Straight lines and geometric designs - Raised, straight-sided feature gardens - Kitchen garden beds - Straight run terraces/retainers - Hard surface mounting i.e. rooftops/decking 	<ul style="list-style-type: none"> - Pre-made Corners - Large Anchor Set + Screws - Bracing Set - Joining Sleeve + Screws
	FL	560	WS / GS	2160	<ul style="list-style-type: none"> - Raised border edging - Medium height retainers - Closed shape garden beds 	<ul style="list-style-type: none"> - Organic and flowing lines - Raised, curved feature gardens - Kitchen garden beds - Curved, sweeping terraces/retainers - Hard surface mounting i.e. rooftops/decking 	<ul style="list-style-type: none"> - Pre-made corners - Large Anchor set + Screws - Bracing Set - Joining Sleeve + Screws
	FHL	400	WS / GS	400, 600, 800, 1000, 1200	<ul style="list-style-type: none"> - Raised garden beds and planters - Retainers (One wall or Closed Shape) - Outdoor furniture bases - Storage boxes 	<ul style="list-style-type: none"> - Square/rectangular free standing beds - Retaining walls - Long 'garden barrier' beds - Hard surface areas, i.e. patios and rooftops - Tables and bench seats (create own top) 	<ul style="list-style-type: none"> - Straight Join Set - Closed Corner Set - Open Corner Set - Standard crossover Bracing Set - Large Anchor Set - Bracing Set + Fixing Screws
	FHL	560	WS / GS	400, 600, 800, 1000, 1200	<ul style="list-style-type: none"> - Raised garden beds and planters - Retainers (One wall or Closed Shape) - Outdoor furniture bases - Storage boxes 	<ul style="list-style-type: none"> - Square/rectangular free standing beds - Retaining walls - Long 'garden barrier' beds - Hard surface areas, i.e. patios and rooftops - Tables and bench seats (create own top) 	<ul style="list-style-type: none"> - Straight Join Set - Closed Corner Set - Open Corner Set - Standard crossover Bracing Set - Large Anchor Set - Bracing Set + Fixing Screws

ABOVE GROUND SOLUTIONS

RAISED PLANTER SOLUTIONS

FL - Flexible RL - Rigid HL - Super Rigid FHL - Fixed Planter WS = Weathering GS = Galvanised



Distributor:

Straightcurve® New Zealand
027 2824453
sales@gardenedging.co.nz
www.gardenedging.co.nz