

SALMOND  
REED  
ARCHITECTS  
Practice Profile 2024





## 04 Practice

- 04 Shareholders & Associates
- 06 Profile
- 09 Management Methodology

## 10 Services

- 14 Architectural Design

## 19 Awards

- 19 Projects
- 20 NZIA Gold Medal

## 26 Contact

## Practice Shareholders:

Rosalie Stanley	registered architect	director
Lloyd Macomber	registered architect	director
Philip Graham	registered architect	associate director
Ali de Hora	registered architect (UK)	associate
Rachel Allen	registered architect	associate

## Directors:

Rosalie Stanley	registered architect	director
Lloyd Macomber	registered architect	director
Philip Graham	registered architect	associate director

## Associates:

Phillip Hartley	chartered building surveyor	senior associate
Tracey Hartley	chartered building surveyor	senior associate
Ali de Hora	registered architect (UK)	associate
Rachel Allen	registered architect	associate
Pamela Dziwulska	registered architect	associate



Allendale House and Annexe, Auckland

54 PONSONBY ROAD

## Practice Profile

Salmond Reed Architects is an award winning architecture and conservation practice founded by Jeremy Salmond. We have a dedicated team of internationally qualified professionals and we understand our clients' values and aspirations. This is fundamental to our approach and we create new and distinctive buildings and conserve nationally significant places, through close collaboration.

New design challenges are taken up by our architects with imagination and flair. Given the opportunity we apply fresh thinking together with a knowledge of details from designs past - allowing us to be both progressive and respectful with our work.

Our heritage architects and chartered building surveyors skilfully apply their training, expertise and experience to heritage and conservation based works – be it reports or plans, consultancy advice or comprehensive documentation and specification services.

Salmond Reed Architects is a recognised leader in the application of modern architectural conservation practice in New Zealand and has played a leading role in the resolution of potentially difficult conflicts between preservation and development of older structures.

Our broad team of architectural professionals appreciate and understand New Zealand history and have been involved in the restoration of some of this country's most important historic buildings, as well as a range of other conservation related character and heritage studies for a variety of civic, commercial and private clients.

The company's work is spread as far afield as the Bay of Islands in the north to Dunedin in the south.

Our combined skills provide a wealth of experience in the documentation and implementation of conservation measures which enables us to provide the attributes required for projects of any scale. We also maintain strong relationships with other professionals such as quantity surveyors, engineers and specialist conservation consultants with whom we work closely to ensure appropriate solutions to individual projects.

***Salmond Reed Architects: Contemporary with character.***



### Salmond Reed is a member of:

- New Zealand Institute of Architects (NZIA)
- Royal Institute of Chartered Surveyors (RICS)
- New Zealand Institute of Building Surveyors (NZIBS)
- International Council on Monuments and Sites (ICOMOS NZ)
- International Committee for Documentation and Conservation of Buildings, Sites and Neighbourhoods of the Modern Movement (DOCOMOMO NZ)
- New Zealand Conservators of Cultural Materials (NZCCM)
- Society of the Protection of Ancient Buildings (SPAB) UK

### Salmond Reed's staff of 19 includes:

- Design architects
- Conservation architects
- Chartered building surveyors
- Heritage consultants
- Architectural graduates
- Administrative support staff



St Thomas' Chapel, St Matthews-in-the-City, Auckland  
 Photo by: Simon Devitt

## Management Methodology: Processes and Support

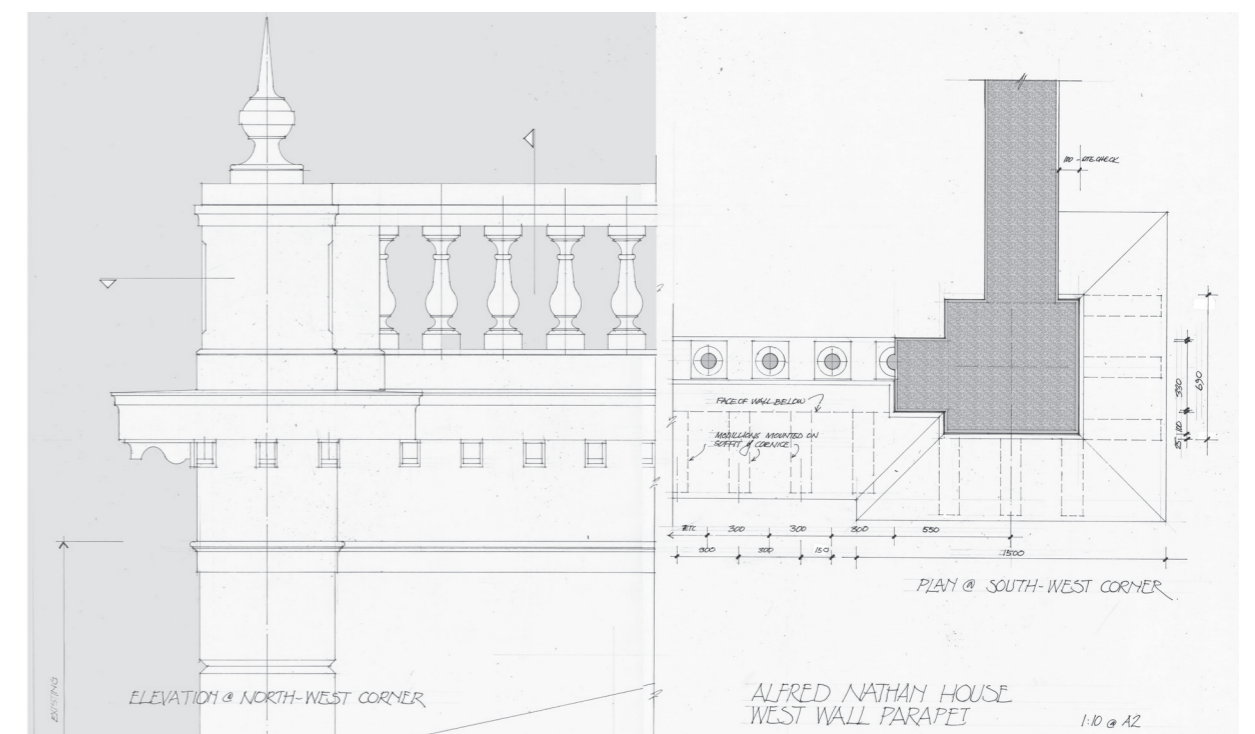
As a practice member of the New Zealand Institute of Architects, Salmond Reed Architects operates the NZIA project management system Good Architectural Practice (GAP) in line with the requirements of ISO 9001. This incorporates systems to control project management, internal systems management and office management and involves practice policy review, system document control, project reviews, system reviews, and continuing professional development of staff.

The practice employs an experienced Practice Manager who, supported by administrative staff, is responsible for collating time records for each project and providing regular comparison against the programme and allocation of resources to ensure compliance with all deadlines and budget requirements.

The Practice Manager also ensures that the company's Professional Indemnity Insurance for project management and architectural services is kept current.

Successful project management is based on a clear understanding of the project brief, budget and programme and within the office is supported by the above-mentioned systems. A project leader is appointed to oversee the allocation of staff to any project work and to liaise with the Practice Manager to ensure that the project's work-flow requirements are met throughout its various stages.

Effective communication with clients, consultants, contractors and other project stakeholders also stems from this same methodology base with regular monitoring of site progress, financial control and regular reporting to the client through the project architect.



# 01 Design

We apply our experience and expertise to create well designed additions and alterations to character buildings and structures in sensitive environmental settings. We are recognised as an award-winning practice for our contemporary-designed residential and commercial buildings and are skilled at incorporating new design into heritage environments. Our approach to new design and conservation methods are current best practice and of the highest standards, helping us restore some of the most significant houses and civic buildings in New Zealand.

# 02 Investigation & Analysis

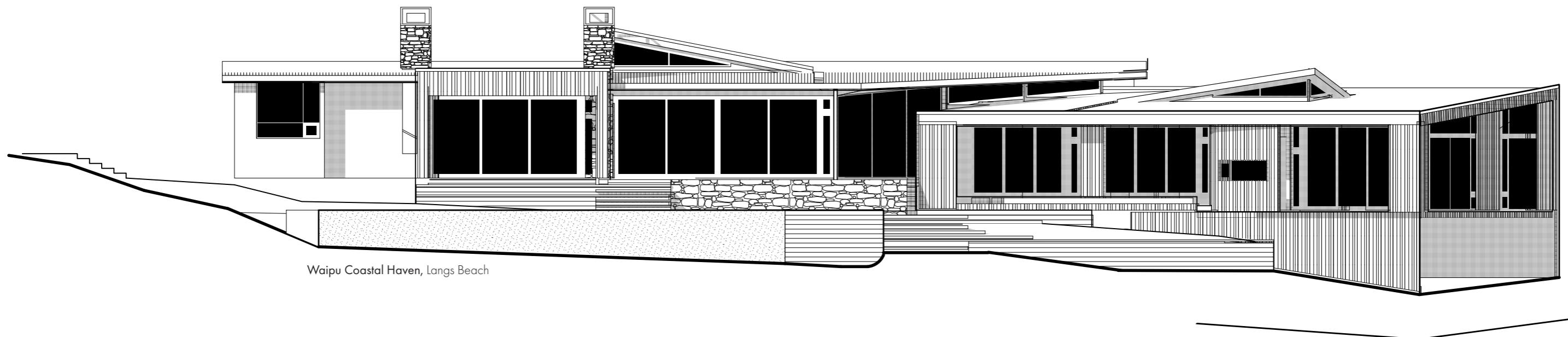
We undertake detailed investigation of existing buildings and structures and defects analysis, producing condition surveys which include the diagnosis of material failures and practical, long-lasting and sympathetic technical solutions.

# 03 Documents & Management

As part of offering full architectural services, we carry out Developed and Detailed Design services - essentially the development of our design thinking and analysis - appropriate for resource consent, building consent, project procurement and construction. We also prepare documentation and manage repair projects to buildings and structures, large or small, simple or complex.

# 04 Conservation

Salmond Reed Architects has a long history of conserving New Zealand's built cultural heritage. We provide a wide variety of services in the field of conservation including heritage assessments, conservation plans, conservation policy guidance documents, maintenance management plans and detailed specifications for heritage building repairs and specialist materials.



Waipu Coastal Haven, Langs Beach

## Services: Architectural Design

At Salmond Reed Architects we approach all of our projects with a combination of problem-solving creativity and a sound understanding of traditional construction methods and modern technologies. Design work in the office is contemporary, sophisticated and always conveys an eye for detail.

### Design Services:

- Concept design, feasibility studies and planning for new buildings, alterations, and restoration work
- Resource consent documentation and applications
- Detailed drawing documentation and specifications for building consents and construction
- Specification and schedule of work
- Tendering and procurement for letting of construction contracts
- Site administration under NZIA and NZS:3910 contracts to ensure the work is in accordance with the design documents

### We can also offer the following additional services:

- Feasibility studies and master planning
- Assistance with grant applications
- Planning advice



St Mary's Bay Renovations, Auckland



Devonport Villa, Auckland  
Photo: Jo Smith







Ring Terrace Renovation, Auckland  
 Photo: Jo Smith

## Awards: Projects

2024

### Dunedin Railway Station Restoration

- NZIA Southern Architecture Award. Heritage Category.

2024

### Auckland Domain Wintergarden Restoration and Seismic Upgrade

- NZIA Auckland Architecture Award. Heritage Category.

2023

### Symonds Street Public Conveniences and Shelter

- NZIA Auckland Architecture Award. Heritage Category.  
 - Resene Total Colour Awards. Colour Maestro Award.

2022

### Cowes Police Station and Oyster Inspector's House Restoration

- NZIA Auckland Architecture Award. Heritage Category.

2021

### Auckland War Memorial Museum Tamaki Paenga Hira, Te Ao Marama and Cenotaph Galleries

- NZIA Auckland Architecture Award. Heritage Category.  
 (in association with Jasmex, FJMT, and Design Tribe)

2019

### University of Auckland Building B119

- NZIA Auckland Architecture Award. Heritage Category.  
 (in association with Architectus)

2019

### Duke of Marlborough Hotel

- Property Council NZ Rider Levett Bucknall. Excellence Award. Tourism & Leisure Category.

2019

### Ring Terrace Renovations

- NZIA Auckland Architecture Award. Heritage Category.

2018

### Alfred Nathan House, University of Auckland

- NZIA Auckland Architecture Award. Heritage Category.  
 (in association with Architectus)

2018

### Mission Bay Pavillion

- NZIA Auckland Architecture Award. Heritage Category.  
 (in association with Herbst Architects Ltd)

2016

### Iona Presbyterian Church, Port Chalmers (Stage 1 Restoration)

- Southern Heritage Trust Dunedin David Cox Memorial Award. Recognising and encouraging "Excellence in the Restoration, Conservation, and Continued Use of Historic Buildings and Structures in Otago."  
 (in conjunction with Wainwright & Co Stonemasons)

2015

### Longbush House

- NZIA Gisborne/Hawkes Bay Regional Award. Housing Category.

2015

### Allendale Annexe

- NZIA Auckland Regional Award. Commercial Category.

2013

### Allendale House and Annexe

- NZIA Auckland Regional Award. Heritage Category.  
 - Resene Total Colour Awards. Colour Maestro Award.

2012

### Turangawaewae Marae

- NZIA Waikato-Bay of Plenty Regional Award. Heritage Category.

2012

### Auckland Art Gallery/Toi o Tamaki

- NZIA National Award. Supreme Award.  
 (in association with FJMT, and Archimedia)

2012

### St Thomas Chapel (in St Matthew in-the-City)

- UNESCO Asia-Pacific Heritage Award. Letter of commendation for innovation.  
 - NZIA National Award. Small Projects Category.  
 - NZIA Auckland Regional Award. Heritage Category.  
 - DINZ Best Awards. Gold Award. Public and Institutional Spaces.  
 - Interiors Awards. Supreme Award. Civic Category.

2011

### Stanbeth and Excelsior Buildings

- NZIA Auckland Regional Award. Heritage Category.  
 (in association with Cheshire Architects)

2009

### Restoration of Old Devonport Post Office

- NZIA Auckland Branch Award. Heritage Category.

2008

### Restoration of Rangitoto Bach 38

- UNESCO Asia-Pacific Heritage Award. Honourable Mention.

2008

### Restoration of Former Chief Post Office, Britomart Development

- NZIA National Award. Heritage & Conservation Category.  
 - NZIA Auckland Branch Award. Heritage & Conservation Category.

2006

### Restoration of Auckland Domain Wintergardens

- NZIA Auckland Branch Award. Heritage & Conservation Category.

2002

### Restoration of Eichardt's Hotel, Queenstown

- NZIA National Award. Heritage & Conservation Category.

2000

### Civic Theatre, Auckland

- NZIA Auckland Branch Award. Heritage & Conservation Category.  
 - Resene Colour Awards.

1995

### Restoration of Pompallier House, Russell

- NZIA National Award. Heritage & Conservation Category.  
 - NZIA Auckland Branch Award. Heritage & Conservation Category.

1990

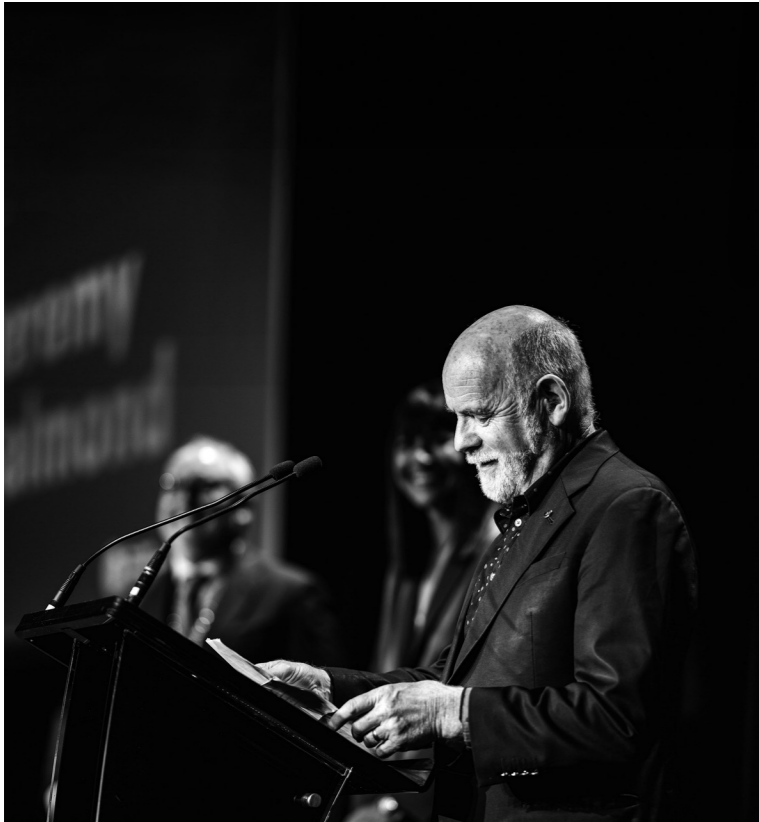
### Windsor Reserve Changing Sheds

- NZIA Auckland Branch Award.

1990

### The Former Jewish Synagogue, Auckland

- NZIA National Award.  
 (in association with Cook Hitchcock and Sargisson Ltd)



## Awards: NZIA Gold Medal

In 2018 our founder Jeremy Salmond received the NZIA Gold Medal - the highest honour the Institute awards to an individual working in architecture in Aotearoa New Zealand. Jeremy Salmond sadly passed away in 2023. He was the founding director of Salmond Reed Architects and a practising architect who specialised in the conservation of historic buildings. In 2007, he was awarded the Queen's Service Order (QSO) for his contribution to the preservation of New Zealand's heritage of significant buildings. In 2018 he was awarded the NZIA Gold Medal in Architecture and in 2020 the University of Auckland recognised Jeremy with the Distinguished Alumni Award for his contribution to conservation and architecture in New Zealand.



Melanesian Mission House, Auckland



Longbush House, Gisborne  
Photo: Porfirio Reynolds



Cowes Police Station and Oyster Inspector's House, Waiheke Island  
2022 Winner NZIA Auckland Architecture Award - Heritage Category.



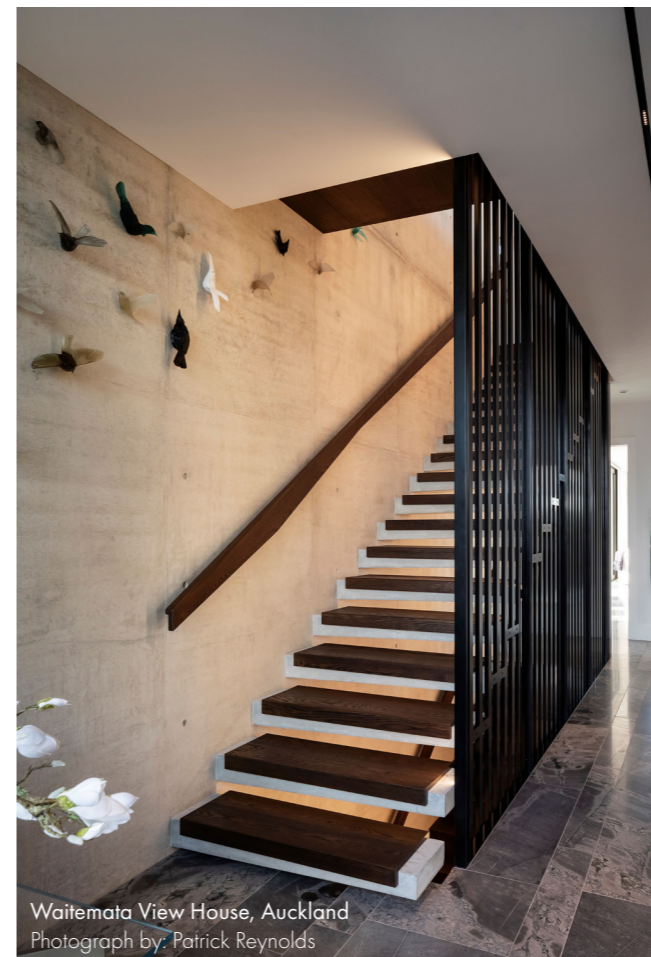
Waitemata View House, Auckland  
Photograph by: Patrick Reynolds



Papillonby Renovation



Ring Terrace Renovations, Auckland  
Photo: Jo Smith. 2019 Winner NZIA Auckland Architecture Award - Heritage Category.



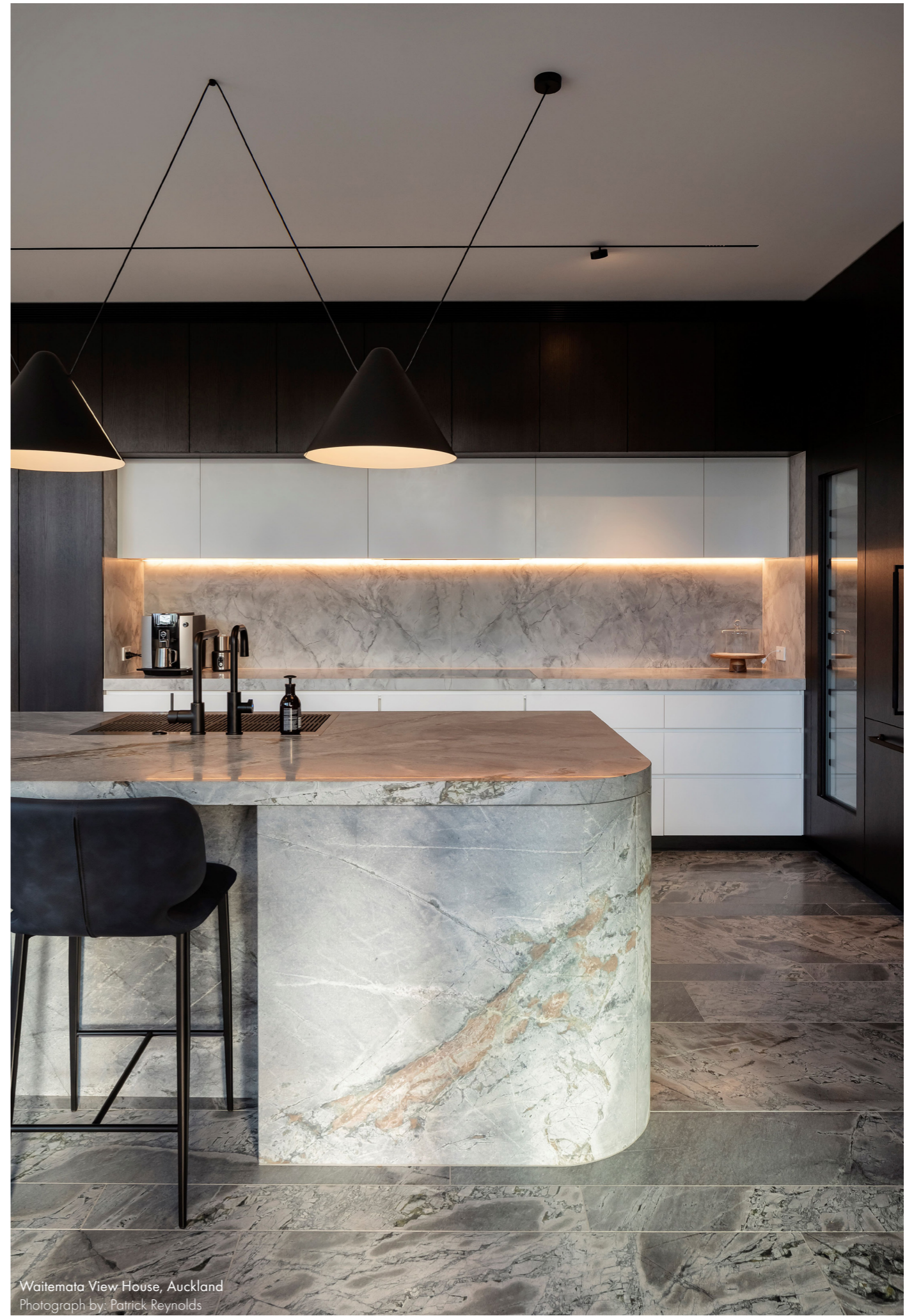
Waitemata View House, Auckland  
Photograph by: Patrick Reynolds



Epsom Villa, Auckland



Birdcage Rob Roy Hotel, Auckland  
Photo: Patrick Reynolds



Waitemata View House, Auckland  
Photograph by: Patrick Reynolds



Allendale House and Annexe  
Photo: Simon Devitt

# Contact

Address  
Level 4, Landmark House  
187 Queen Street  
Auckland CBD 1010

Telephone      Email  
+64 9 445 4045      office@salmondreed.co.nz

Website  
www.salmondreed.co.nz



Papillon House Herne Bay, Auckland



Parnell Cottage  
Photo: Patrick Reynolds

| SALMOND  
| REED  
| ARCHITECTS