

**REAL PEOPLE
BEST OUTCOMES**



INTERIORS



REAL PEOPLE BEST OUTCOMES

When you're looking for **real people** to achieve the best outcomes for your commercial interior fitout or refurbishment project, talk to Q Interiors. We're an open, honest and easy to deal with team, with **big accomplishments**.

We specialise in successfully delivering projects across a wide spectrum of industry sectors. So you can be safe in the knowledge that your job will be handled with professionalism and care. Working collaboratively and remaining agile allows us to offer you solutions quickly and achieve the perfect result.

Integrity, pride, and enjoyment guide our work ethic, because if we weren't proud to put our name on a finished project, how could we expect you to? Big or small, simple or complex, trust the team at Q Interiors to deliver you a result that ticks all the boxes.

”

Integrity, pride and enjoyment guide our work ethic, because if we weren't proud to put our name on a finished project, how could we expect you to?

WHAT WE DO

Q Interiors specialises in managing and delivering fitout and refurbishment projects within the commercial sector. We can deliver across a wide range of project requirements and have a wealth of in-depth industry knowledge. Our team recognise that our success depends on continually delivering a high level of professionalism, communication and ensuring we achieve deadlines.

We have extensive experience in the following:

- Office Buildings
- Industrial Buildings
- Heritage Buildings
- Specialist sectors
- including education and healthcare
- Office fitouts and alterations
- Retail environments

THE POWER OF A TEAM APPROACH

Being able to move quickly and easily, make changes as and when needed, and do it all collaboratively with YOU; that's one of the things we do best here at Q Interiors.

How do we do it? By being flexible and solutions focused.

When something crops up to change your commercial interior project's plans, we'll work with you to get to the best possible solution. You'll discover pretty quickly that we take pride in our collaborative approach.

Our tight and proven team offer the right blend of expertise, and our close relationships with our key suppliers and sub-contractors mean the right people are always at hand to adapt to challenges and changes.

Ultimately, being agile means you're able to get the final outcome you require, whether it's the same as when the project started, or it was altered along the way.

Our working partnerships

We work in partnership with industry leading designers, consultants, subcontractors and suppliers. These close working relationships give our clients a unique advantage, as it gives the team at Q Interiors the expertise, pride and passion to bring your vision to life.

”

The end result is amazing. This project could not have gone any better and if I were to build again it would certainly be with the Q team.

Tony Black, Managing Director,
Black Steel Mobile

CORE VALUES

Real people, best outcomes is our mantra. Real people make up our team, and real people are whom our clients are.

This translates into working collaboratively, using our expertise and your project brief to achieve the best possible outcome for you. We truly care about producing a high-quality end result and the key values behind our mantra that help us do just that are: Enjoyment, Integrity, and Pride

Enjoyment

Each stakeholder in a project has a job to do. But if people enjoy what they do, they'll be happier, healthier, and achieve more. Work is such a big part of life and life is for enjoying – so we do our best to make every job enjoyable.

Integrity

Building with integrity by being honest and open with our clients, consultants and contractors. Always seeking the best results for our clients, we challenge, question, and use experience build relationships and get great results.

Pride

Personal pride in a job well done is an essential part of life at Q Interiors. A sense of self-achievement and personal responsibility provide a feeling of personal pride for each and every member of our team.



DEBTWORKS HENDERSON, AUCKLAND

Q Interiors completed this contemporary 700m² fitout for the new offices of Debtworks NZ. Our multi-disciplined team worked in conjunction with Q Commercial Construction, who were responsible for the base build.

The project required a high specification steel structure to be installed to house an impressive 11 metre sliding glass boardroom door. All mechanical ductwork is extensively exposed, giving a modern industrial finish to the open plan offices.

The fitout features a number of high level finishes including veneer wall panels, Woven Image acoustic wall panels, Asona feature ceilings, Ambitec plaster, fabric wrapped pinboards, Heritage floor tiles and various coloured Irvine's carpet tiles.

With feature LED lighting throughout the office space, Debtworks staff now have a state-of-the-art and sophisticated working environment.



LOCATION

Auckland

PROJECT TYPE

Fitout

VALUE

\$450,000

DURATION

12 weeks
Completion 2015

Q TEAM

Tai Flavell
Dave King

CONSULTANTS

VRLA Architecture
MPM Projects

CONSULTANT CONTACT

Richard Hiles-Smith

[✓] COMPLIANCE WITH HEALTH, SAFETY & ENVIRONMENTAL STANDARDS

[✓] COMPLIANCE WITH QUALITY STANDARDS

[✓] COMPLETED ON TIME

[✓] COMPLETED WITHIN BUDGET



DB BREWERIES OTAHUHU, AUCKLAND

The Q Interiors team successfully completed the refurbishment of DB Breweries new bar at their head office in Bairds Rd, Otahuhu. The project involved a complex array of products and finishes all completed within a tight timeframe.

The existing bar was stripped out including the removal of structural walls, with new partitions and ceilings installed. The existing raised floor was extended, with the existing ceiling removed and lowered to create a level surface.

Steelwork was installed to support the new wall openings with walls and ceilings relined in MDF.

Walls and ceiling had a mixture of finishes including powdercoated steel mesh panels, solid oak panelling, aluminium framed glazed partitions and painted gib surfaces. Solid Oak flooring was laid to match existing and new joinery included the installation of a new 6 metre long concrete bartop.



LOCATION

Auckland

DURATION

6 weeks

CONSULTANT

Jasmax

PROJECT TYPE

Fitout

KEY Q STAFF

Eden Clune

CONSULTANT CONTACT

Hamish Clentworth

VALUE

\$320,000

[✓] COMPLIANCE WITH HEALTH, SAFETY & ENVIRONMENTAL STANDARDS

[✓] COMPLIANCE WITH QUALITY STANDARDS

[✓] COMPLETED ON TIME

[✓] COMPLETED WITHIN BUDGET



LA-Z-BOY FURNITURE GALLERIA WAIRAU PARK, AUCKLAND

Q Interiors were responsible for both the design and build of this 650m² retail fitout for La-Z-Boy Furniture Galleria's new Wairau Store.

Our multi-disciplined team undertook the design and initial scoping alongside the client, allowing us to fast track progress on site, making decisions on the go, actioning works straight away. This offered considerable programme savings across all aspects of the project.

Our fast track approach allowed us to hand the works over in half the original project timeframe and allow the client to trade early - a huge bonus for a retail business.

The fitout included new suspended ceilings, air conditioning, LED lighting, decoration, carpet and polished concrete floors.



LOCATION

Auckland

PROJECT TYPE

Fitout

VALUE

\$250,000

DURATION

4 weeks
Completion 2018

KEY Q STAFF

Jason Stevens
Alain Venuto
Maya Nguyen

CONSULTANT

Grant Browne
Q Interiors

CLIENT

La-Z-Boy Furniture Galleria
Matt Roberts
03 982 4818
m.roberts@furniture.co.nz

[✓] COMPLIANCE WITH HEALTH, SAFETY & ENVIRONMENTAL STANDARDS

[✓] COMPLIANCE WITH QUALITY STANDARDS

[✓] COMPLETED ON TIME - EARLY HANDOVER

[✓] COMPLETED WITHIN BUDGET



ADVISORY WORKS

VICTORIA PARK, AUCKLAND

Q Interiors completed this 250m² fitout for the new offices of Advisory Works in Auckland. We worked in conjunction with Yellow 6 design to deliver this contemporary and stylish office environment.

The office itself was set amongst a number of historic boutique spaces and as such required a sympathetic approach to the existing architecture.

The interior was given an uplifting and modern twist with dramatic black powdercoated glazed partitions, polished floors, exposed original brickwork and feature lighting.



LOCATION

Auckland

PROJECT TYPE

Fitout

VALUE

\$250,000

DURATION

8 weeks
Completion 2018

KEY Q STAFF

Jason Stevens
Eden Clune

CONSULTANT

Reg Doria - Project Manager/Designer
Yellow 6
reg@yellow6.co.nz

CLIENT CONTACT

Simon Mundell
simon@advisory.works

[✓] COMPLIANCE WITH HEALTH, SAFETY & ENVIRONMENTAL STANDARDS

[✓] COMPLIANCE WITH QUALITY STANDARDS

[✓] COMPLETED ON TIME

[✓] COMPLETED WITHIN BUDGET



SEISMIC UPGRADE GREAT SOUTH ROAD, AUCKLAND

Seismic upgrade works were required to bring this commercial building up to the client's designated NBS standard; works included relocating of existing services and then installing a new structural steel support beam which was delivered in sections then assembled and installed within the basement car park.

Relocation of services included; altering basebuild sprinkler pipework, lighting, air conditioning, fire alarms, along with the relocation of tenant installations; namely,

fire suppression system pipework and air conditioning refrigeration pipes which support a critical national data centre.

The Q team successfully delivered these works with minimal disruption to tenants and works were delivered on budget and on time.



LOCATION

Auckland

DURATION

4 weeks

CONSULTANT

Beca

PROJECT TYPE

Seismic Upgrade

VALUE

\$60,000

CLIENT

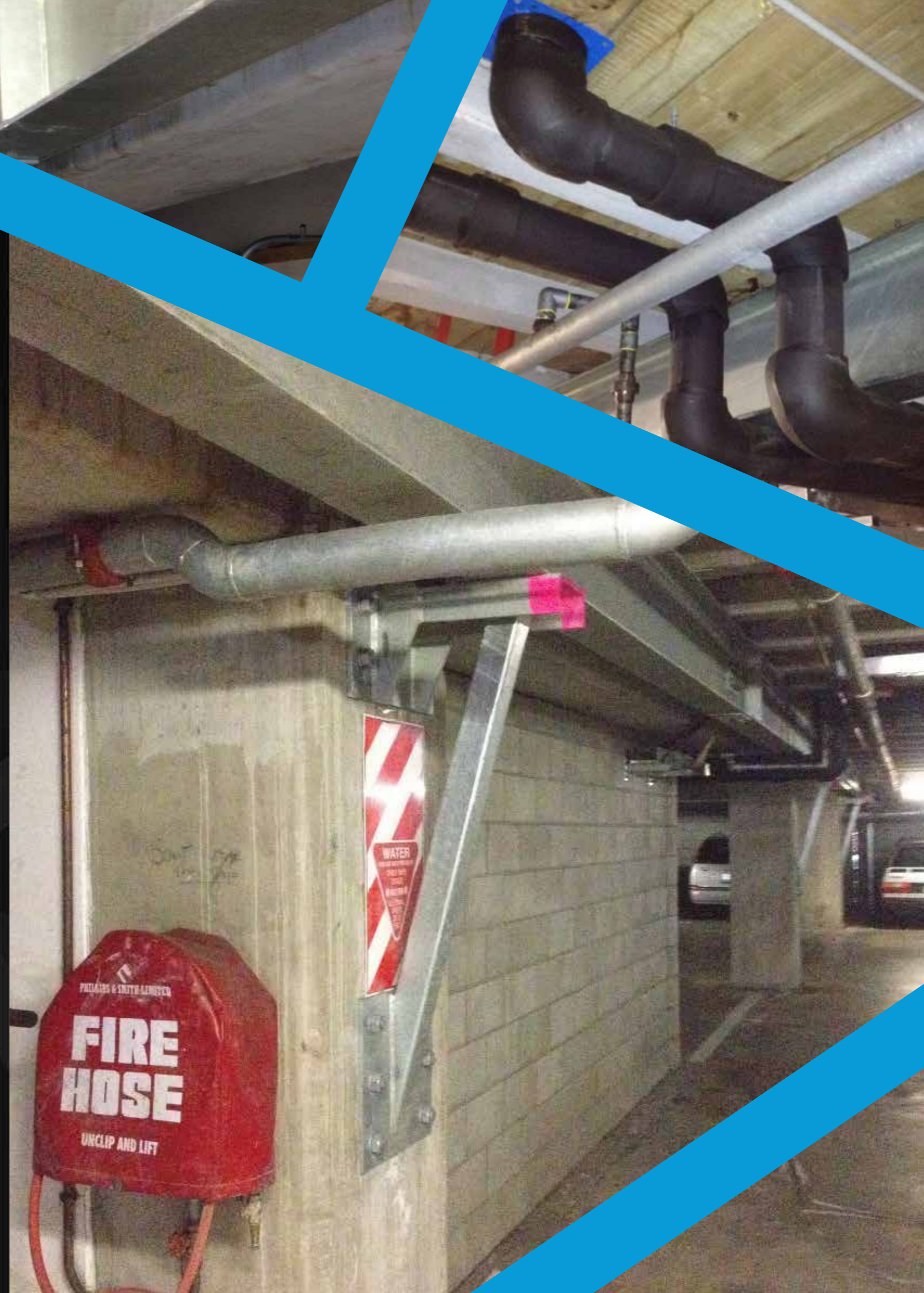
Stride Property
Andrew Hay
09 912 2690

[✓] COMPLIANCE WITH HEALTH, SAFETY & ENVIRONMENTAL STANDARDS

[✓] COMPLIANCE WITH QUALITY STANDARDS

[✓] COMPLETED ON TIME

[✓] COMPLETED WITHIN BUDGET



CREATE A SAFE WORK PLACE

Health and safety should always be about continuous improvement. Health and safety plays a big role in the construction industry, with poor standards leaving room for big risk. Because our employees that are like family and we care about our long-lasting relationships with clients, safety on-site is paramount to ensure everyone is looked after.

Via construction management and business intelligence system, we conduct weekly safety audits, collate results and hone in on anything that may need improving. By tracking the results of the inspections, you'll get peace of mind from knowing that we're keeping the worksite safe to the best of our ability and knowledge.

With continuous improvement in mind, our site managers conduct random audits of other sites to gain a different perspective and ensure they aren't managing their site with blinkers on – remaining open to different ways of working that could offer more safety. Feedback is always welcome, whether it's internal from our close-knit team or from clients or other industry professionals. This ensures you can step on to our worksites with confidence.

[✓] SITE SAFE MEMBERS

[✓] PREQUAL CERTIFIED

CARING FOR OUR ENVIRONMENT

A fair few surfers, fisherman, and outdoors lovers make up the Q Interiors team, so you can imagine this has a positive influence on how we view our impact on the environment. We want to ensure the impact we have is as minimal as possible and much like our view on health and safety, we know there's always room for improvement.

Ensuring waste is sorted into the correct bins, working with waste partners to properly sort construction materials off site, and prefabricating materials and supplies offsite wherever possible are just some examples of how we currently manage our impact on the environment.

The environmental friendliness of the construction industry is still an area with massive room for growth and change as new developments are made. As these developments occur, we'll be excited to bring them to the sites we work on with you.

”

Along with their quick response times they had a knack for recommending innovative solutions to a number of requested changes and worked in a transparent manner with a “can do” approach.

David Cossey, Portfolio Manager,
Aotearoa Fisheries.



A PROUD TEAM

Being proud of your team isn't something everyone can claim, but at Q Interiors it's something we say often. With our ethos based on integrity, pride and enjoyment, it's no wonder we treat each other like family – and care for our staff like we care for our clients. Led by Directors Tony Eastland, Brendan Gray, and Grant Browne, we're close-knit, real people, who work hard together to be able to deliver you the best outcomes.

Pair our values with a wealth of industry knowledge and experience in New Zealand and abroad, and we believe we've struck a winning combination. In order for you to end up with a finished project that you love, it needs to be made by people who share your vision and take pride in the end result.

We look for people who are not only knowledgeable, but are passionate about their work because we spend a lot of time in our jobs and we think it's important to enjoy them. Each of the Q Interiors team look forward to coming to work in the morning, so you can look to us for an ambitious, driven team with a fresh approach that you can count on.

Delivering the best outcome to you is what we do; trust us to do it, with a smile.

”

Everyone of your employees at Q Interiors were efficient, organised, extremely helpful and genuinely concerned with providing a quality product.

Andrea Steffensen, Director, MCS Property Group





+64 9 412 5233 | enquiries@qinteriors.co.nz
19 Shamrock Drive, Kumeu, PO Box 132 Kumeu, Auckland, New Zealand

www.qinteriors.co.nz