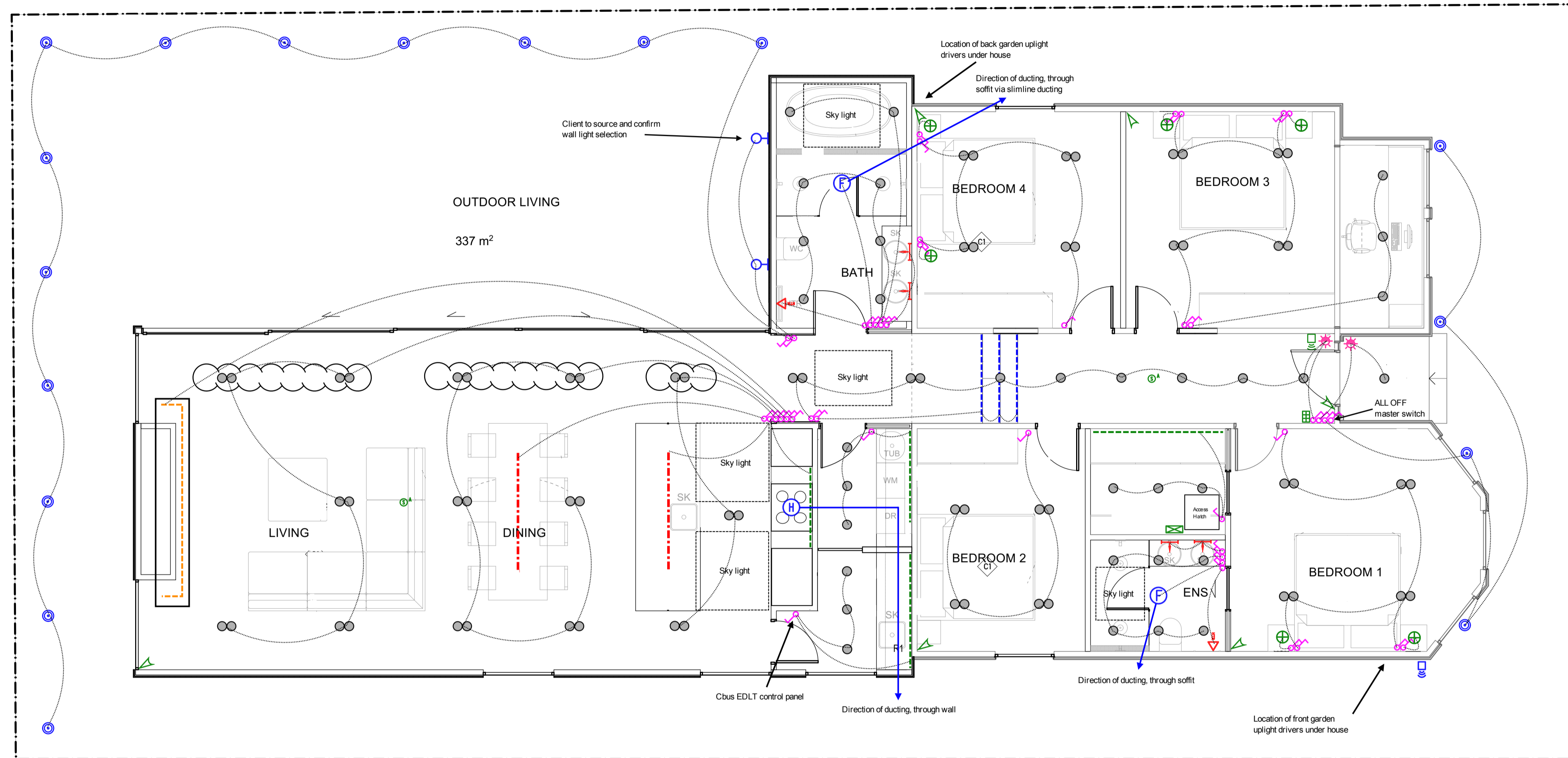


Drawing Notes:

- Allowance for PDL Iconic switchgear in vivid white
- Light switches mounted at 1200mm AFFL
- Positioning of outlets on this plan are indicative only. Do not scale
- Clouded lights to be wired separately back to panel to allow for advanced programming
- Dryer ducting TBC
- Alarm control panel located in ceiling space next to access hatch
- Provide a twin 1.5mm cable to all 1-10v downlight circuits for dimming control wired separately back to automation panel
- Provide data cable and IP module to alarm control panel
- Maintain a minimum separation of 150mm between mains cabling and C-bus cabling in parallel over short distance and greater separation over longer distances
- When C-Bus needs to cross a mains cable, make sure that there is adequate separation of at least 60 mm. Also ensure that the C-Bus cable crosses the mains cable at a 90degree angle.
- Maintain a gradual bending radius for all bends in C-bus cabling
- Maintain a minimum separation of 150mm between mains cabling and 1-10v dimming control cabling
- Heated towel rails supplied by client



Lighting		
○	D1 Downlight 2 cell	33 EA
∞	D2 Downlight 5 cell	32 EA
---	Oddthing Long light 2m	4.03 m
---	Recessed LED strip under cabinetry. Supplied and installed by cabinet maker	7.04 m
---	Surface LED strip mounted under fireplace overhang	3.95 m
---	Surface LED strip for hallway steps	4.45 m
⊕	Pendant light small	6 EA
⊕	Bathroom back lit mirror	4 EA
⊕	Exterior wall light	2 EA
⊕	C-Bus light switch. PDL Iconic black	43 EA
⊕	Inline extractor fan 150mm. Manrose	2 EA
⊕	150mm Rangehood ducting kit. Manrose	1 EA
⊕	Hardwired smoke detector, wired into security system.	2 EA
⊕	Arrowhead 12v mini	1 EA
⊕	Internal siren. Arrowhead	1 EA
⊕	External siren. Arrowhead	1 EA
⊕	Security PIR sensor. Arrowhead	6 EA
⊕	Alarm keypad. Arrowhead	1 EA
⊕	Alarm control panel	1 EA
⊕	In-ground light, client supplied	17 EA
⊕	Heated towel ladder, client supplied	2 EA
⊕	C-Bus 360degree motion sensor	2 EA

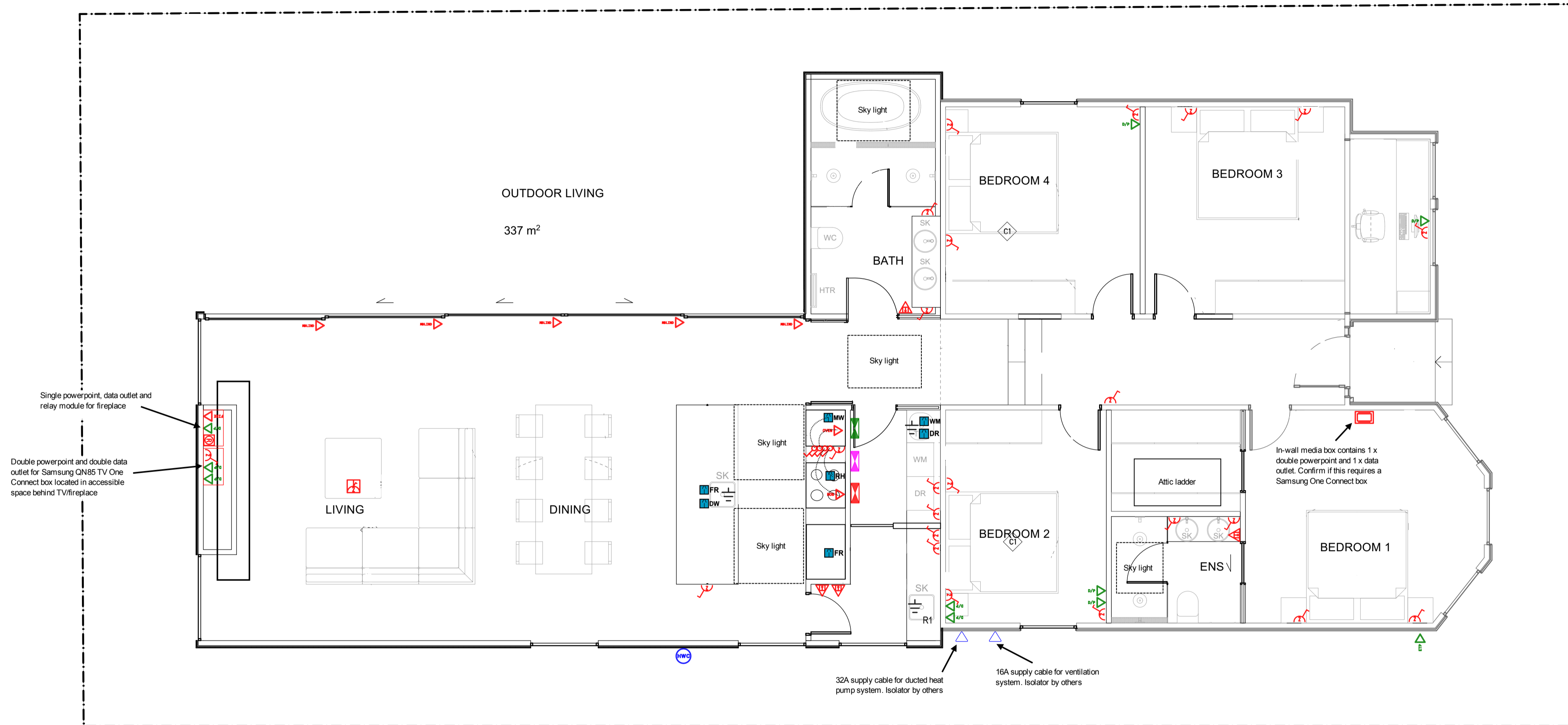


Phone 09 8107323
Email info@kcelectrics.co.nz
Web kcelectrics.co.nz
Copyright The design on this drawing is the copyright of K C Electrics Ltd and shall only be used for the purpose of this project

Project 5 Clarence Street
Project address 5 Clarence Street Ponsonby
Client Iconiq Construction
Type Residential dwelling
Scope Electrical, data, security
Automation system C-Bus

Drawing title Lighting, extraction, and security
Issue date 26.10.21
Drawn by K. Spemann
Scale 1:100 @ A3
Revision B
Sheet no. 01

- Drawing notes:
- Allowance for PDL Iconic switchgear in vivid white
 - General powerpoints mounted at 300mm AFFL. Above bench powerpoints mounted at 1000mm AFFL
 - Positioning of outlets on this plan are indicative only. Do not scale
 - Provide provisional flexible conduits from switchboard/network panel/automation panels to accessible ceiling space for future cabling
 - Provide provisional flexible conduits form accessible ceiling space to underside of house for future cabling
 - Maintain a minimum separation of 150mm between mains cabling and C-bus cabling in parallel over short distance and greater separation over longer distances
 - When C-Bus needs to cross a mains cable, make sure that there is adequate separation of at least 60 mm. Also ensure that the C-Bus cable crosses the mains cable at a 90degree angle.
 - Maintain a gradual bending radius for all bends in C-bus cabling
 - Maintain a minimum separation of 150mm between mains cabling and 1-10v dimming control cabling
 - Kitchen appliances supplied by client
 - Blind company to confirm and mark exact location of blind motor connections
 - Blind company to supply plug in leads for motorised blinds
 - Heat pump company to confirm and mark location for supply feeds
 - Heat pump company to supply and install isolators



Power		
	Double powerpoint	23 EA
	Pop up floor box, Legrand	1 EA
	Isolating switch	4 EA
	In-wall media box behind TV	1 EA
	Single powerpoint for dishwasher	1 EA
	Single powerpoint for microwave	1 EA
	Single powerpoint for fridge	2 EA
	Single powerpoint for rangehood	1 EA
	Single powerpoint for washing machine	1 EA
	Single powerpoint for dryer	1 EA
	Single powerpoint for fire place	1 EA
	Electric hob, 32A. Client supplied	1 EA
	Wall oven, 16A. Client supplied	1 EA
	Motorised blind connection	5 EA
	Single powerpoint for gas hotwater unit	1 EA
	Underfloor heating controller	4 EA
	Tuebels switchboard	1 EA
	Signet networking panel	1 EA
	C-Bus automation panel	1 EA
	Single RJ45 data outlet	9 EA
	Fibre external termination point	1 EA
	Plate mounted relay module for automated switching of fireplace, PDL 600series 600RM	1 EA
	Earthing for sink	3 EA
	Heat pump/ventilation supply feeds	2 EA



Phone 09 8107323
Email info@kcelectrics.co.nz
Web kcelectrics.co.nz
Copyright The design on this drawing is the copyright of K C Electrics Ltd and shall only be used for the purpose of this project

Project 5 Clarence Street
Project address 5 Clarence Street Ponsonby
Client Iconiq Construction
Type Residential dwelling
Scope Electrical, data, security
Automation system C-Bus

Drawing title Power and data
Issue date 26.10.21
Drawn by K. Spemann
Scale 1:100 @ A3
Revision B
Sheet no. 02