

SHOWHOME SELECTION



MADDREN

est 1935

maddrenhomes.co.nz

DISCOVER THE MAGIC OF A MADDREN HOME

There's something pretty magical about designing and building your own brand new family home. If it's done right, the experience and the rewards are nearly impossible to put into words. Yes, it can be challenging at times. So our advice, no matter who you ultimately choose to build with, it is to surround yourself with advisors you trust and who have industry experience.

Maddren has spent the last 80 years mastering the art of what we call TRUE Design and Build. It's all about getting people's dreams and ideas out of their heads and down onto paper. That lets us work together to craft them a unique family home of the finest quality. It takes passion and pride in your work to do this. We have plenty of both, and we would like to share our magic with you.

On the following pages are a collection of our past showhomes. Unique homes, built with care, craftsmanship and total dedication to detail.

“Houses are like people. People are unique and houses should reflect their personality.”



WOODHILL



WAINUI COVE



VINISTRA



WILKINS



RIDGEDALE





WOODHILL

SIMPLE, CLASSEY AND EDGY



From the outside, the house has a solid, timber box-like presence enhanced by the squared parapet main walls concealing simple mono-pitch roofs. In plan this translates into two interconnected, centrally accessed pavilions: one with open plan kitchen/dining/living spaces with the other housing the bedrooms and bathrooms. The bedroom section can be further expanded by connecting it to another customised module with functions such as a garage, self-contained accommodation or office.

The interiors feature a designer kitchen with a concealed scullery and the option of a seamless integration of study and storage spaces. A large volume open plan living connects via sliding glass doors to wide exterior decks. Robust, steel-frame louvres define the generous outdoor living and dining space that can be further enhanced by the addition of an adjustable sunroof and sliding privacy screens depending on the selected site's orientation. The main bedroom deck underlines the overall design language with a similar sun shading structure.



3
BEDROOMS



2.5
BATHROOMS



1
LIVING



WITH OVERSIZE RANCH SLIDERS TAKING THE LEVEL TRANSITION FROM INSIDE TO OUT THE SPACE FOR ENTERTAINING CAN EASILY BE SUBSTANTIALLY INCREASED.

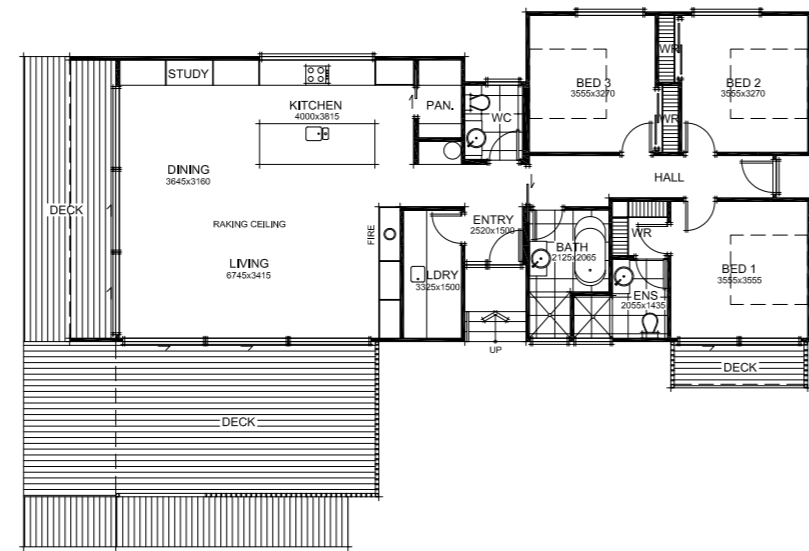




COMPRISING THREE BEDROOMS, TWO BATHROOMS AND A SEPARATE TOILET, THE PLAN IS MASTERFULLY DESIGNED AROUND A LIMITED SPACE.



SINGLE LEVEL 147m² HOME





WAINUI COVE

PITCH PERFECT SUBURBAN ELEGANCE



Step into the future of urban family living. Sleek, striking Wainui Cove is the perfect balance of opposites. Black pitch pavilions contrast ivory weatherboard pods in this architecturally designed four bedroom home. Cool, black features are warmed by stylish cedar detailing inside and out. The elegant floor to ceiling glazed entry invites you into a spacious layout with separate private and public areas. A second lounge offers a private haven, opening out to a tranquil north facing rear deck shared with the master and surrounded by lush foliage. Clean lines, hidden details and perfect finishes, Wainui Cove has it all and more.



4
BEDROOMS



2
BATHROOMS



2
LIVING



2
CAR PARKS

STYLISH CEDAR
EYEBROWS FRAME THE
EXTERIOR AND DRAW
YOU INTO THE VAST
LIVING SPACE WITH
HIGH-RAKING CEILING.





ANGLED TIMBER WALL PANELS OFFER PRIVACY FROM THOSE WALKING THE HALLWAY, WHILE CREATING A STUNNING FEATURE WALL THAT ADDS FLAIR TO THE CENTRAL LIVING SPACE.





THE SPACIOUS LAYOUT SEPARATES THE PRIVATE AND PUBLIC AREAS AND FEATURES A SPACE-EFFICIENT KITCHEN WITH CONCEALED BUTLERS PANTRY.



TWO WINGS OFFER SPACE AND PRIVACY AND A SECOND LOUNGE SHARES A TRANQUIL REAR DECK WITH THE MASTER, PERFECT FOR ENJOYING YOUR MORNING EGGS BENE.





CONTRASTING PAVILIONS AND TIMBER DETAILING OFFER THE PERFECT MIX OF STYLE AND WARMTH FOR MODERN FAMILY LIVING.



VINISTRA

A HAVEN IN HUAPAI



Urban family dreams are realised in Huapai. Ultra-modern and ultra-comfortable, this surprisingly spacious 3-bedroom, 2 bathroom home, promises and delivers. Warm timber pavilions invite you inside this light-drenched, architecturally designed home. High raked ceilings add elegance and space to the combined kitchen and living area. A wrap-around hardwood deck offers indoor-outdoor flow and connects with the master and secondary bedroom. Despite its modest budget, Vinistra boasts premium black detailing and fixtures that put it a class above. This beauty has the extras and all the conveniences for easy family living. Discover the style of Vinistra.



3
BEDROOMS



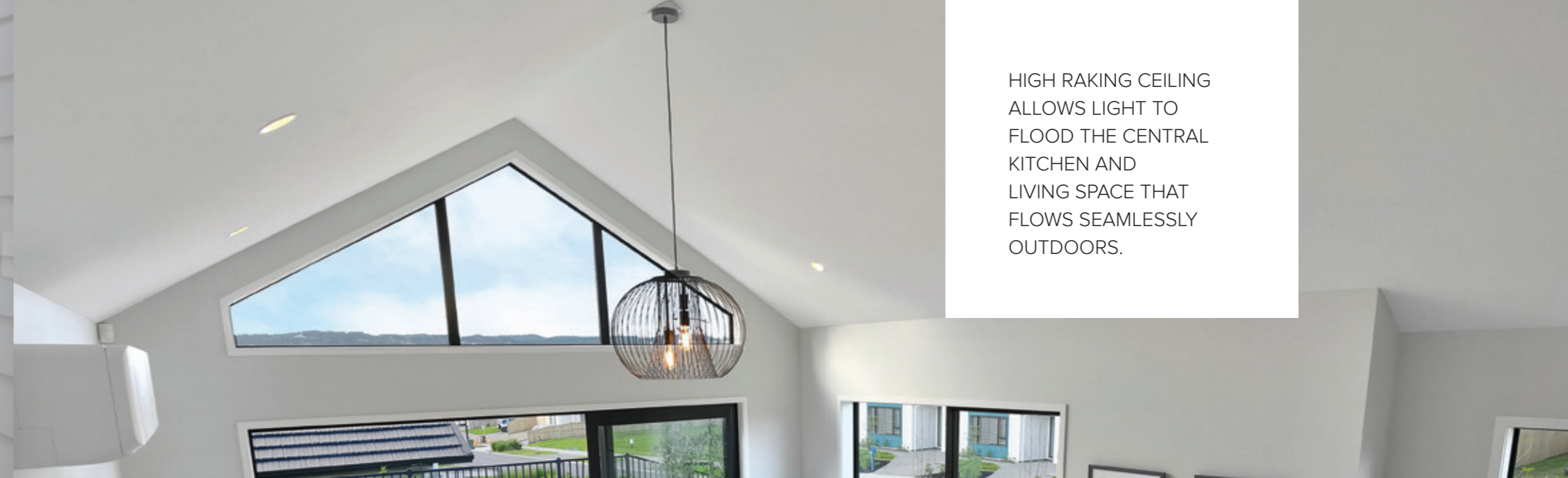
2
BATHROOMS



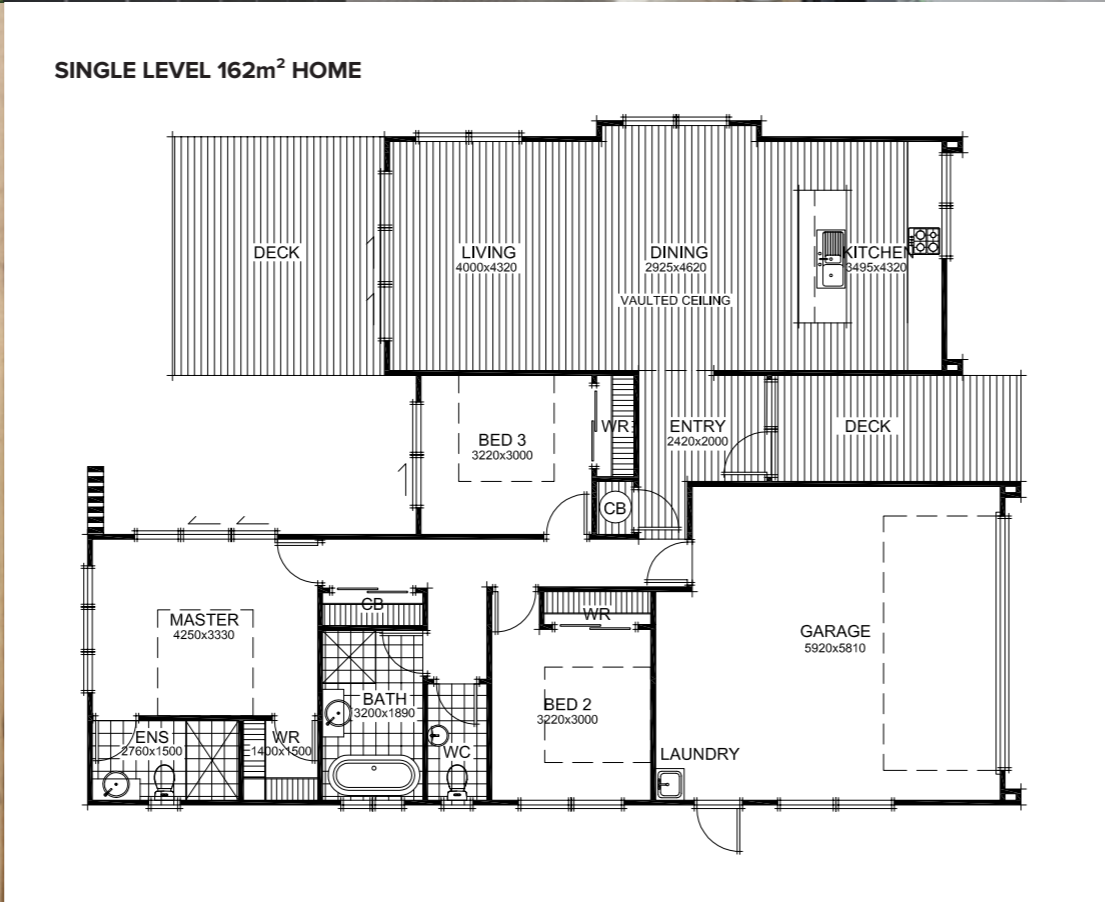
1
LIVING



2
CAR PARKS



HIGH RAKING CEILING
 ALLOWS LIGHT TO
 FLOOD THE CENTRAL
 KITCHEN AND
 LIVING SPACE THAT
 FLOWS SEAMLESSLY
 OUTDOORS.





DOUBLE BEDROOMS,
TWO BATHROOMS
PLUS A POWDER ROOM
ALLOW SPACE AND
CONVENIENCE FOR THE
WHOLE FAMILY, WITH
THE MAIN BATHROOM
PROVIDING A LUXURIOUS
RETREAT TO WASH
AWAY THE DAY.



CLEAN LINES
PAIRED WITH
NEUTRAL STONE
BENCHTOPS AND
CABINETS OFFER
ELEGANCE AND
FUNCTIONALITY IN
THE SPACE-SAVING
KITCHEN.





WILKINS

**CONTEMPORARY CLASSIC
FOR MODERN LIVING**



This 187sqm four-bedroom show home has been designed with simplicity and style. The overall design shows how high-quality materials and architectural features can create an aesthetically pleasing and practical home. Feel a sense of space wash over you in the attractive open-plan areas with vaulted ceilings.

The overall feel of the space is soft and light. Quality Fisher & Paykel appliances complement the design of the entertainer's kitchen. A butler's pantry and wine fridge are ideal for catering to unexpected guests. The living spaces enjoy good flow to outdoor living areas. Four generous bedrooms include the master with spacious ensuite. The main bathroom features a freestanding bath, tiled shower and custom vanity. There's a separate laundry to keep messy jobs out of the way and out of sight. Cladding includes horizontal Taranakipine weatherboards and vertical shiplap cedar. An asphalt tiled roof caps off this well-designed package.



4
BEDROOMS



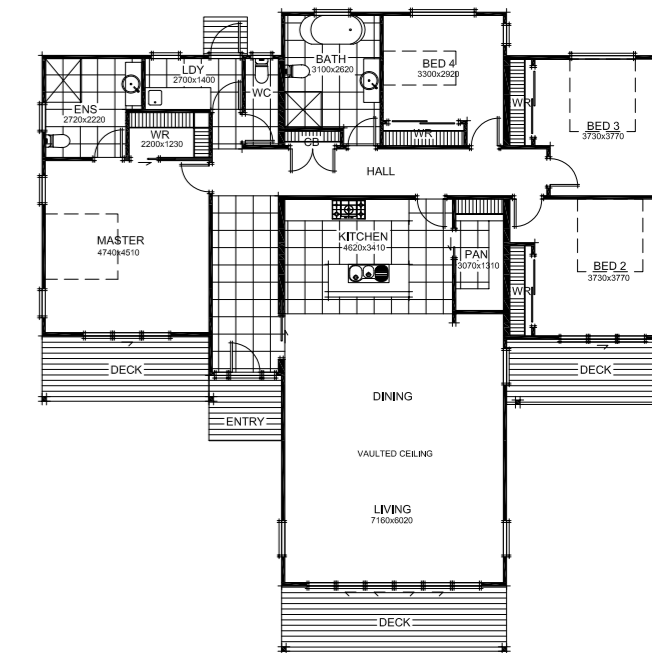
2.5
BATHROOMS



1
LIVING



SINGLE LEVEL 187m² HOME



WITH HIGH VAULTED
CEILINGS AND OPEN
PLAN LIVING, THERE'S
NO SHORTAGE OF
SPACE BUT PLENTY
OF COMFORT IN THIS
AWARD WINNING HOME.





RIDGEDALE

DRAW YOUR OWN LINE

This architectural single-level home has true street presence with the intersecting lines of rumbled block, weatherboard cladding and metal long run roofing. Inside, the exposed rafters, high raked ceilings and cathedral windows create an amazing sense of light and space when you enter. Superbly detailed throughout, we love how this home's white and dark-wood theme gives it a retro vibe, while remaining completely modern. Large glass sliders and windows make the most of natural light and provide a direct connection to the outdoors. This was Maddren's most successful showhome ever!



4
BEDROOMS



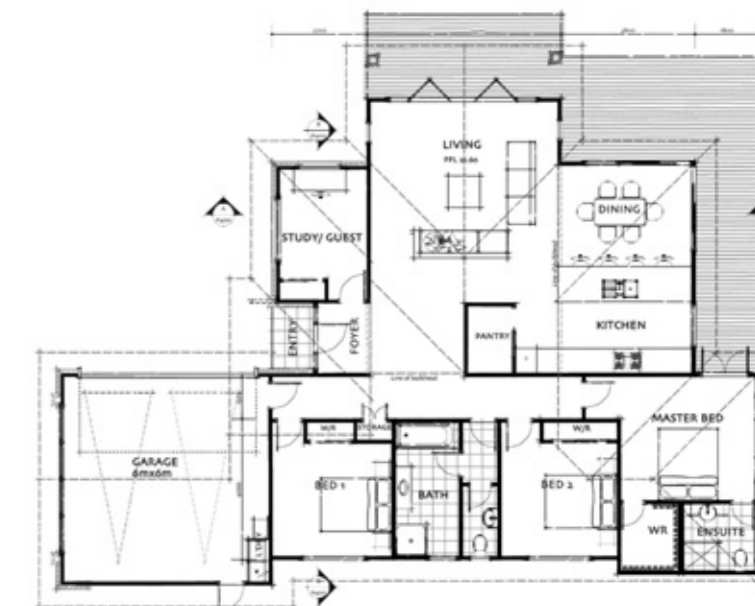
2
BATHROOMS



2
LIVING



SINGLE LEVEL 190m² HOME





MADDREN HOMES LTD

Phone 09 412 1000
Head Office 248 Main Road Kumeu

0800 666 000
maddrenhomes.co.nz

