



SlideShop
Wardrobe & door systems



Wardrobe And Doors Call 0800 2 SLIDE

North Auckland: 79 Ellice Rd. | 09 444 9962

Central Auckland: 47A Mt. Wellington Hwy | 09 527 1602

Hamilton: 109 Rostover St. Hamilton | 07 834 1426

More options please visit website at:

www.slideshop.co.nz

For every sneaker collector, denim lover and T-shirt saver
 Whether you prefer fitted, open or freestanding. We have Wardrobes to suit
 your clothes, your style and your space.



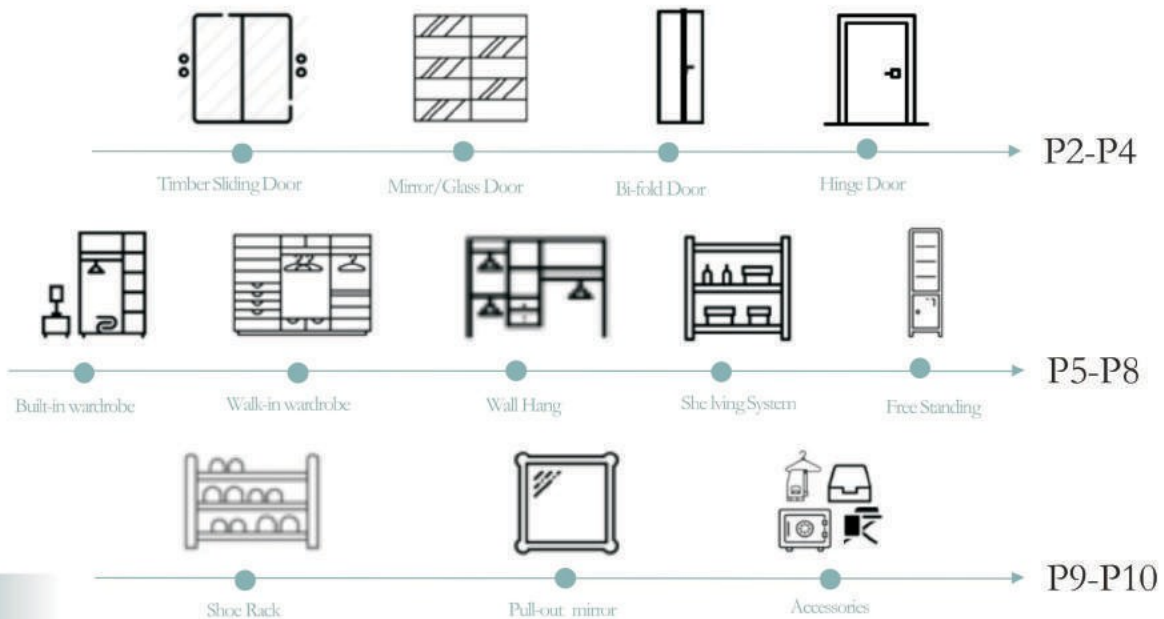
SlideShop
 Wardrobe & door systems

· Perfect Combination · Superior Quality · Customized Products

Kiwi Home Never Out Of Style

- Specialized in wardrobe doors and cabinetry
- Built-in and Walk-in wardrobes
- Wardrobe shelving and hangers have an array of Combination
- Our Team Focus Is On Providing Solutions To All Your Storage Needs.
- Functional, Stylish And Ease Is What We Offer

Product Line



Door Frame & Track

Smooth, Quite, Beautiful
 Door Frame Standard
 - Long Lasting Aluminum
 - 4 Wheels On Top
 - 2 Adjustable Wheels On Bottom



Groove Frame

Pole:
 Width 35mm | Depth 35mm

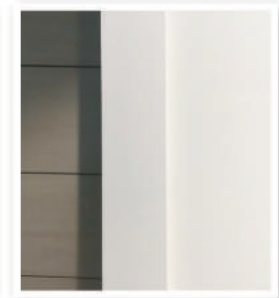
Divider:
 Width 23mm
 Color Option:
 Anodized Silver | White | Black

Slim Line Frame

Pole:
 Width 10mm | Depth 35mm
 Divider: Width 11mm
 Color Option: Anodized Silver

Square Edge Frame

Pole: Width 50mm | Depth 35mm
 Divider: Width 35mm
 Color Option: Anodized Silver | White

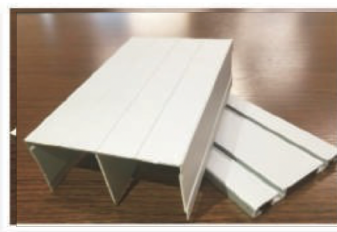


Top & Bottom Track



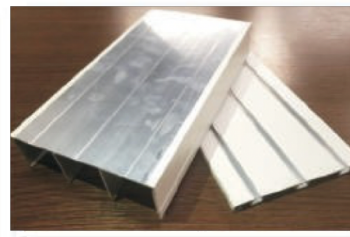
Single Track

Top:	Bottom:
Width: 45mm	Width: 39mm
Height: 40mm	Height: 6mm



Double Track

Top:	Bottom:
Width: 84mm	Width: 80mm
Height: 40mm	Height: 6mm



Triple Track

Top:	Bottom:
Width: 125mm	Width: 120mm
Height: 40mm	Height: 6mm

Color Option:

Anodized Silver

White

Black



Our Sliding Door Standard

Our door are custom made right here in New Zealand.
Constructed with Aluminum, Designed to last a life time.

Types of door we do to suit different application

1. Top and bottom mounted sliding doors
2. Top Hung sliding doors
3. Bi-folding sliding doors



Frame: Slim Line
Panel: Full Panel white melamine and Mirror)



Frame: Silver Groove
Panel: Full Panel Mirror doors



Frame: Black Groove
Panel: Melamine adding top & Bottom Opague Galss



Frame: Silver Groove
Panel: Full Panel (Opaque Glass)



Frame: Silver Slim Line
Panel: Lite Oak Melamine adding centre Mirror



Frame: Grooved Frame in Black
Panel: Full Black Mirror with centre White Glass



Frame:
Slime Line in Silber

Panel:
3 division of mirror and
white melamine



Frame:
Grooved frame in Black

Panel:
Full white melamine with 4 division
mirror and melamine doors



Frame:
Edge square in Silver

Panel:
Full white melamine and
Full grey Mirror



Frame:
Grooved frame in Maple

Panel:
2 division of mirror doors and
maple bevel



Frame:
Slime Line in Silver

Panel:
Full lite oak melamine and mirror adding
top and bottom lite oak panel



Frame:
Slim Line

Panel:
Full Lite oak melamine
with centre mirror



Frame:
Slim Line in Silver

Panel:
2 sets of full mirror doors with 2 sets of
4 division melamine



Frame:
Slim Line in Silver

Panel:
2 sets of Grey Mirror doors and 2 sets of
4 division Dark Oak Melamine doors

Startlet Wardrobes

18mm built-in wardrobe

Manufactured from Quality Melamine MDF in 18mm White, Lite Oak and Dark Oak Color.

At Slide Shop we provide onsite design consultation to design a functional and innovative wardrobe organizer that would meet consumers' demand for value, style and quality. The modular design allows for ultimate length.

All towers are |

500mm wide x 380mm Deep x 2022mm High

Top Shelf are | up to 2400mm Wide x 380mm Deep

All Drawers are |

514mm Wide x 180mm High, Standard or soft-closing runners for premium use.



18mm standard white melamine finish with 4 division sliding doors

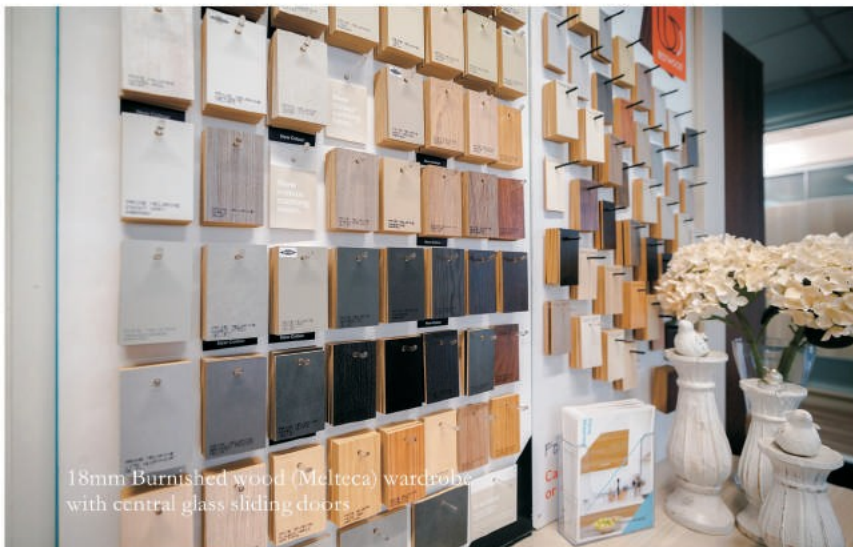


18mm Dark Oak melamine finish with 3 division sliding doors



18mm Lite Oak melamine finish with White melamine sliding doors

We assemble the tower for your home and push the main tower into position. The top shelf and hanging rail are cut and extended to wall



18mm Burnished wood (Melteca) wardrobe with central glass sliding doors



18mm Burnished wood (Melteca) wardrobe with central glass sliding doors

Premium Wardrobes



Premium Walk-in Wardrobes

18mm White/ 25mm Color melamine

Manufactured from Quality Melamine MDF in 18mm White or 25mm Lite oak and Dark oak color.

At Slide Shop we provide onsite design consultation to design a functional and innovative wardrobe organizer that would meet consumers demand for value, style and quality. The modular design allows for unlimited length.

500mm Tower are | 550mm Wide x 475mm Deep x 2119mm High

800mm Tower are | 850mm Wide x 475mm Deep x 2119mm High

Top Shelf are | up to 2400mm wide x 475mm Deep



Drawers are | 500mm and 800mm wide x 234mm High, soft-closing runners for premium use.

Call us today, give your required sizes and address, we will give you a confirmed quote immediately.





Shelving System

Wall Hung system wardrobe

18mm White/25mm color melamine

Manufactured from quality MDF in 18mm White, Lite Oak and Dark Oak color.

Using our well designed wall hung wardrobe system is more than decorating your room. We now have the wardrobe to suit your style.

All of your favorite shoes, jacket, skirt and trouser anchor into the space you want. We can run a wall lining behind the wardrobe to cover the back wall to make the best premium finish.



- Wall Hung system wardrobe
- 18mm white and woodgrain melamine with 2mm PVC edging
 - Color option: natural white, light oak, walnut
 - Anti-friction aluminum hanging rail
 - 1.6m high fully adjustable shelving unit and 2 drawers in options
 - Uniquely designed wall hung solution using Titus connection system



Slide Shop provides free on-site measurement and quotation for every customer. So give us a call today at 0800 2 SLIDE to inquiry your dream space.

Storage Space Solution

Wall Fixed Wardrobe Free standing wardrobe

Box Color Option:

White, Lite Oak and Dark Oak

Suited for wall to wall situation whether you need a wardrobe plus desk option or full wardrobe option.

Melamine finish in 18mm/25mm.

Standard box size are |

2400mm High x 610mm Deep

▲ 18mm Free-standing wardrobe



▲ 1 Side Lite Oak Wall Fixed Wardrobe With desk

Study desk with book shelves



▲ Laundry shelving with corner accessories

Wardrobe Accessory

High Quality premium Finish

Our wardrobe accessory fit into our premium wardrobe series perfectly to maximize your wardrobe functionality.
 For your existing wardrobe, we can anchor the mirror you want in your wardrobe, basket for bags and trousers hangers.
 Please visit our showroom to view our accessory range and wardrobes to fit into your dream home.



Wooden Finish Accessory drawer



Premium Finish Trousers hanger
(9 rails and 18 rails options)



Premium Finish Trousers hanger
(9 rails and 18 rails options)



Pull Out 180 Degree Rotating
Shoe Rack in 1.8m High



Premium Finish Trousers hanger
(9 rails and 18 rails options)



Pull out Ironing Board



3 pieces corner set



Premium soft closing hardware



Storage basket in White color



Storage basket in chocolate color



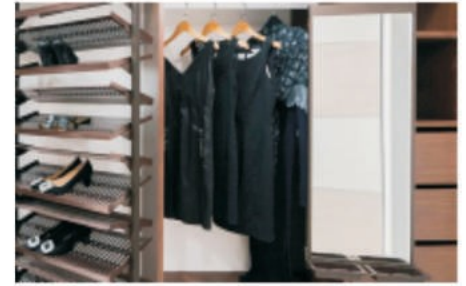
Pull out Tie hanger



Pull out Tie Hanger



Trouser hanger



Pull out mirror

Edging

Our 2mm thick edging on the mdf gives a trendy look, All broad are edged on all sides to prevent board from getting damaged if wet.



Hanging Rail

We offer two different types of hanging rails along with different hardware options; include high quality, heavy duty aluminum.



Drawer Track

40KG Heavy-duty soft closing drawer runners, silent and





North Shore

79 Ellice Rd. Wairau Valley
 P. 09 444 9962
 E. northshore@slideshop.co.nz

Central Auckland

47A Mount Wellington Hwy.
 P. 09 527 1602
 E. central@slideshop.co.nz

Waikato Showroom

109 Rostrevor St. Hamilton
 P. 07 834 1426
 E. waikato@slideshop.co.nz

HOW WE WORK



Clean > Follow By Our 10 Years Guarantee

