



Lake Loft

 2  4  3  media

Total Area 284 sqm

SHOWHOME

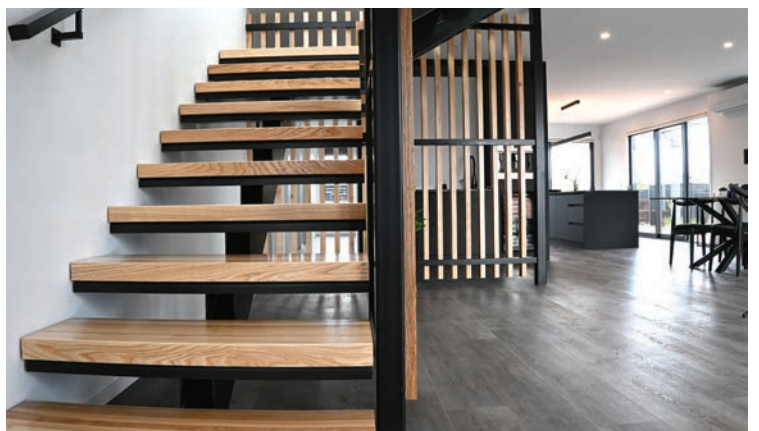
60 Harakeke Drive, Nga Roto Estate, Taupo

Mon -Fri 11am - 2:30pm

Sat & Sun 1pm-3pm

The outstanding views of Lake Taupo and Mt Tauhara are only the beginning of this designer 2 storey, 4 bed, 3 bathroom, 2 living area home.

The architectural designer home from David Reid Homes has four generously sized bedrooms, all of which have views of Lake Taupo and/or Mt Tauhara. The Master bedroom's outlook of the lake is simply stunning. The master suite has a generously sized walk-in wardrobe and stunning tiled ensuite.



David Reid Homes Taupo

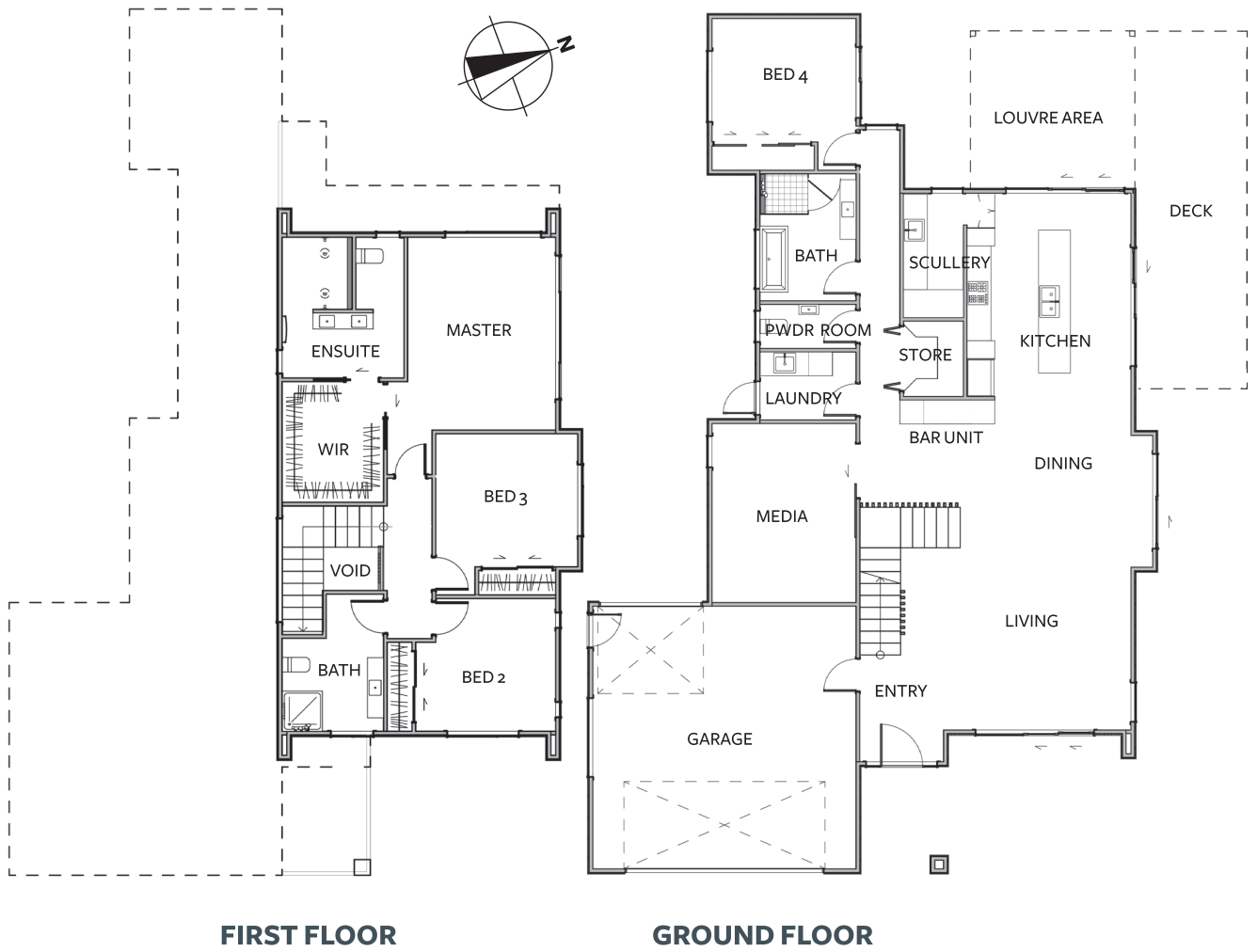
Taupo Design & Build Ltd

P. 07377 0777 A. 60 Harakeke Drive, Nga Roto Estate, Taupo

E. scott.hare@davidreidhomes.co.nz

0800 000 007 | davidreidhomes.co.nz





Total Area 284 sqm

This home was designed with ultimate family living in mind. It features two separate living areas, 3 designer bathrooms, a separate toilet and great indoor/outdoor flow for entertaining and enjoying the beautiful outlook and lifestyle as well as a lovely sunny deck and louvre system for shelter.

The stylish Kitchen, Scullery, Bar and Media room are an entertainer's dream.

If you love the design of the house but want to change some aspects of the layout of specifications we are happy to customise it to your requirements. Floor plans can also be tailored to suit your building site to optimise views, sun and protection from the elements. All plans are copyrighted and no part may be reproduced or copied without prior written consent from David Reid Homes.

Length	21.6m
Width	14.2m

Living

Kitchen	6.1x4.1
Living/Dining	7.6x4.4
Media	4.6x3.8

Bedrooms

Master	4.8x3.7
Bed 2	3.5x3.3
Bed 3	3.5x3.3
Bed 4	3.8x3.1

Garage

	6.6x6.6
--	---------

Louvre Area	16.8m ²
Front Porch Area	6m ²
Total Area	307.37m ²



Specifications

Structural Integrity

- Firth Rib Raft Foundation System

Exterior Cladding & Roof

- Trim Rib Roof in Colour Steel Flaxpod
- James Hardie Stria weatherboard on sides
- James Hardie Linea weatherboard in front and Herman Pacific HP52 vertically run cedar

Joinery / Doors

- First Windows double-glazed aluminium joinery in Colorsteel Flaxpod, with solux glass
- Plasma PLo4 Entry door in Colorsteel Flaxpod with Yale 3109 digital door lock
- Colorsteel Nevada insulated sectional garage door and Aspen insulated door at rear of garage
- Interior doors – Superior Horizon square groove doors - lacquered
- Door handles – Windsor Pegasus Graphite handles

Access Throughout House

- Stairs – Custom Steel construction with American White Ash treads

Bathrooms

Downstairs Bathroom

- Clearlite Pinnacle vanity in white
- Dorf Villa tapware in gunmetal grey
- Athena Lifestyle base and glass with tiled walls
- Athena Contro 1600 Bath
- Athena Illuminar LED mirror
- Newtech Toro Round heated towels rail in gun metal grey
- Tile Warehouse Marquina tiles in Honed Nero on floor with Heritage white mosaic tiles in shower

Powder Room

- Caroma Luna Back to wall toilet
- Clearlite Veva hand basin in ultragloss white
- Dorf Villa tap in gun metal grey

Upstairs Bathroom

- Caroma Luna Back to wall toilet
- Vanity – Clearlite Cashmere floor standing in Blackened Elm
- Tapware – Methven Glide
- Athena Soul 1200x900 acrylic shower
- Towel Rails – Connected to hydronic heating
- Mirrors – polished edge by A & T glass

Ensuite

- Athena Sirrocco Alumino vanity in Black Exocheque with Vanilla Noir top & double serifs basins
- Athena Alumino tower in Black Exocheque
- Caroma Titan Stainless Steel tapware
- Caroma Titan Stainless Steel robe hooks
- Caroma Urbane Cleanflush Back to Wall toilet
- Tile Warehouse Metal Stone Silver tiles 600x600 (floor), 300x600 (walls)

Kitchen

- Bench - Pacific Stone Granite bench in Steel Grey leathered
- Cupboards/drawers - Melteca acrylic soft touch in Pitch Black
- Sink – Archant Eco Granit Aoraki Nero
- Tap – Dorf Inca tap
- Appliances – Smeg Double ovens
- Smeg induction and gas cooktops
- Samsung fridge
- Splashback in Marble Statuario A Matte Florim Stone
- Scullery bench – Laminex Snowdrift
- Scullery sink – Archant Robiq 400-10
- Scullery tap – Dorf Poseidon in black

Bar

- Bench – Pacific Stone Granite bench in Steel Grey polished
- Cupboard fronts in Melteca Acrylic soft touch in Pitch Black
- Splashback Smokey mirror glass
- Tap Dorf Poseidon in black

Wardrobes

- Shelving – Powdercoated ventilated shelving systems and melteca inbuilt wardrobes
- Walk in Wardrobe – Designer Homeware custom built units

Flooring

- Carpets – Manhattan Tribeca 100% Solution Dyed Nylon
- Hard floor – Rhino Evercore in Oak Noir

Electrical

- LED downlights

Heating

- Hot Water System – Hot Water cylinder run via heating system
- Heating – Renewable Energy Hydronic Underfloor heating downstairs with radiators in bedrooms upstairs
- Heat pump – Daikin Hi-wall heat pump in main bedroom & living area

Insulation

- Insulation – Pink Batts R2.8 walls and R5.0 ceiling



David Reid Homes Taupo

Taupo Design & Build Ltd

P. 07 377 0777 A. 60 Harakeke Drive, Nga Roto Estate, Taupo

0800 000 007 | davidreidhomes.co.nz

Designed
for you

