

WIDE
ROUGH SAWN
ARCHITRAVES
SURROUND
WINDOWS

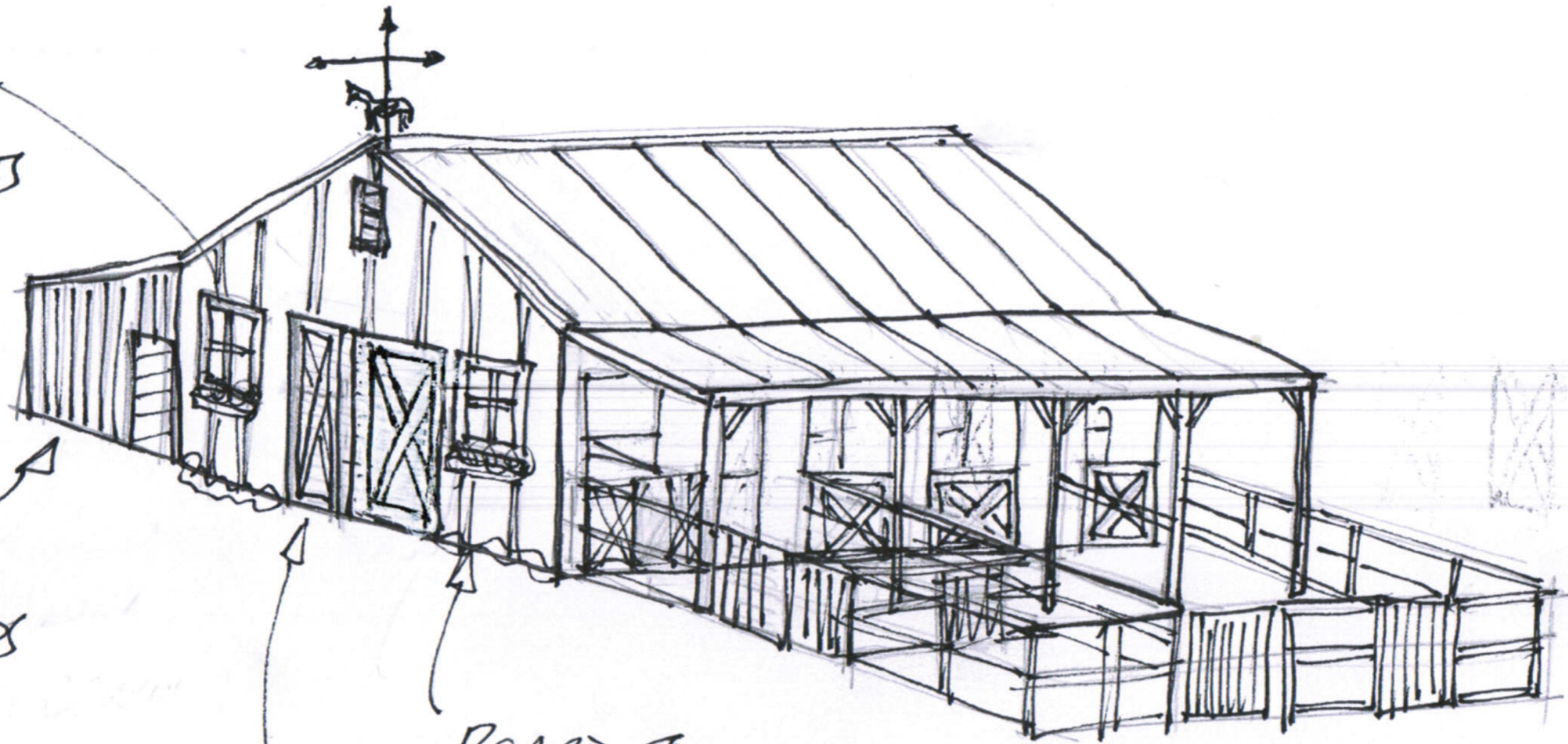
ROUGH SAWN
VERTICAL BOARDS

Vertical cladding
on main barn
to weathering

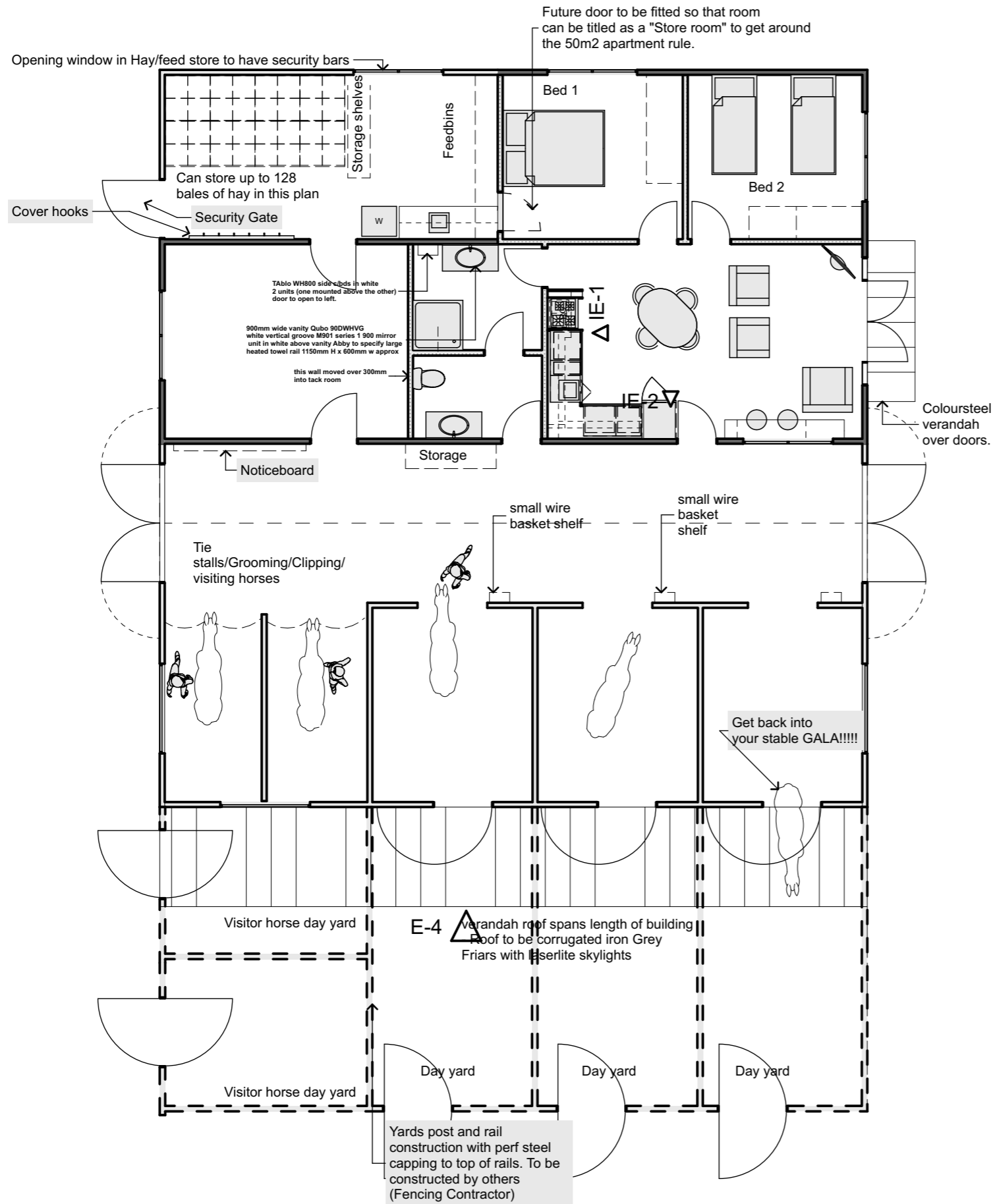
BOARD &
BATTEN CLADDING

TALL BARN DOOR

FACED COWS BACK
TRUCK INTO BLEEDING WAGON
SHEDS.



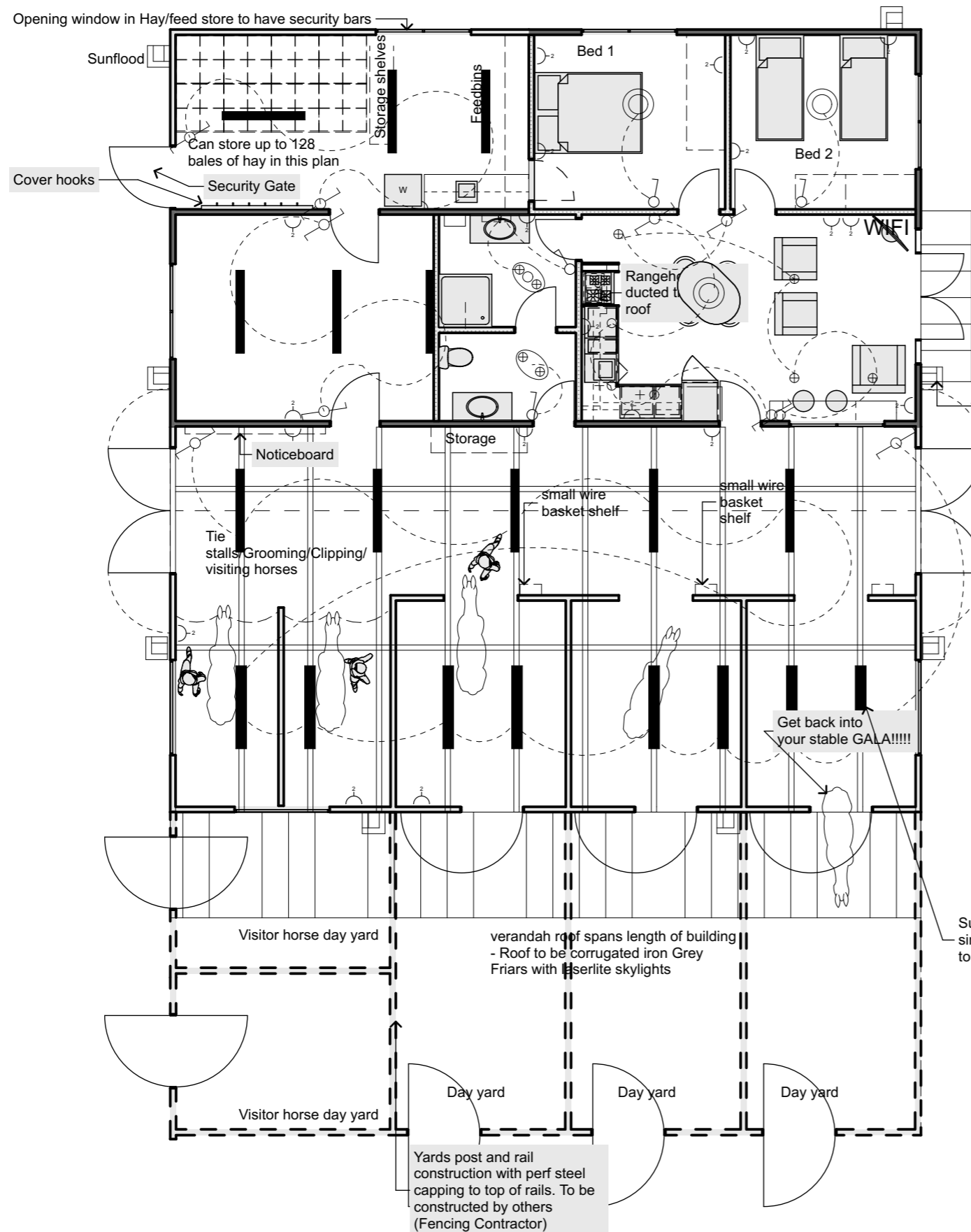
E-2



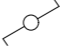



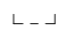



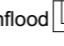


E-1

E-3

E-4



Electrical Key

-  Two way switch.
-  Single switch.
-  3 in 1 Extractor fan light fitting heat combo use most powerful extractor available!
-  2 in 1 Extractor fan light fitting combo
-  Mirror light over vanity
-  Surface mounted LED
-  Decorative pendant fitting
-  Outside light fittings on sensors/timers
-  Sunflood
-  Surface mounted LED or fluorescent light fitting with diffuser
-  Double Hotpoint

Note: All outside light fittings run on sensors/timers and are master switched from inside the barn door.

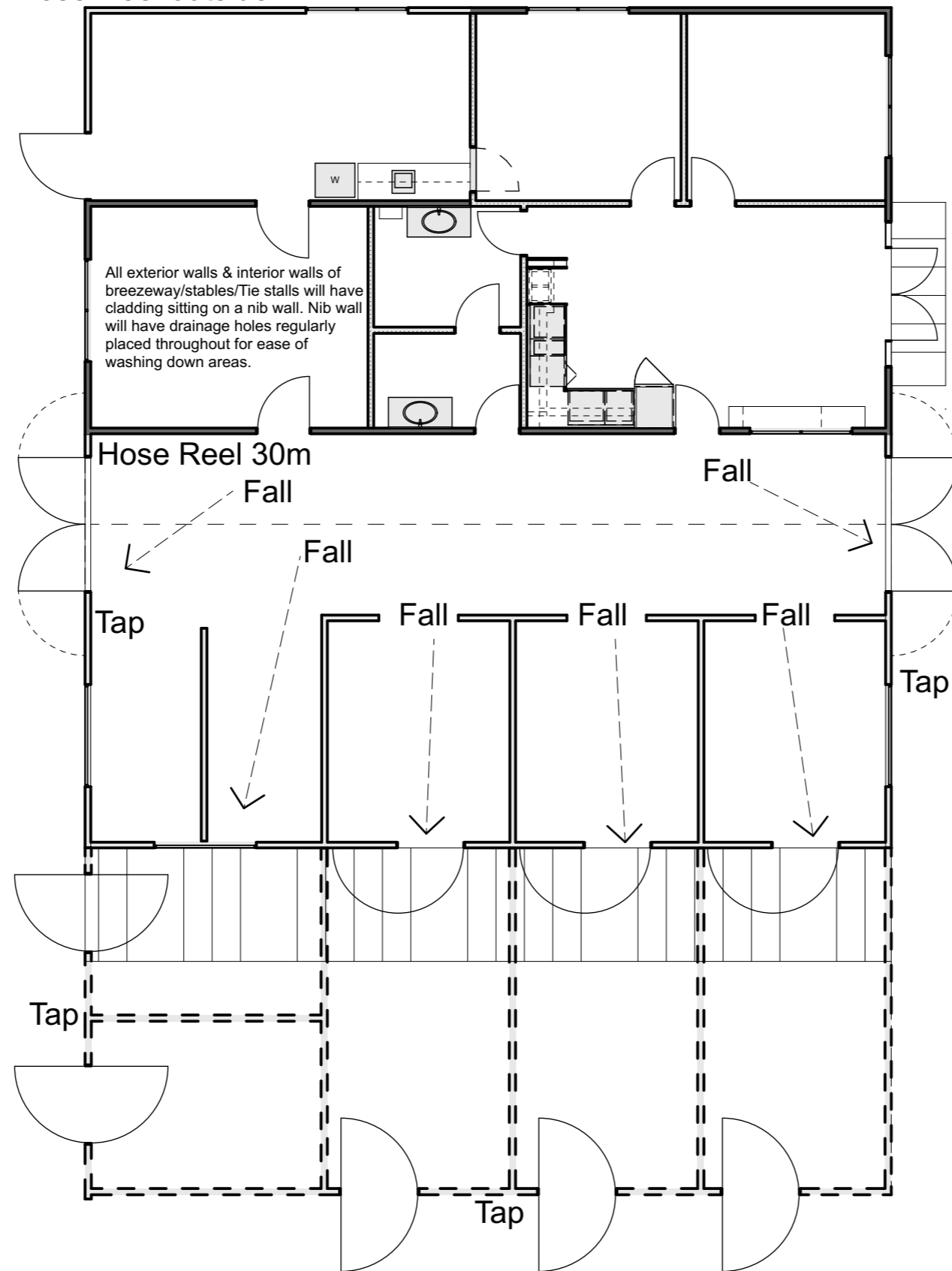
All lights to have warm white bulbs

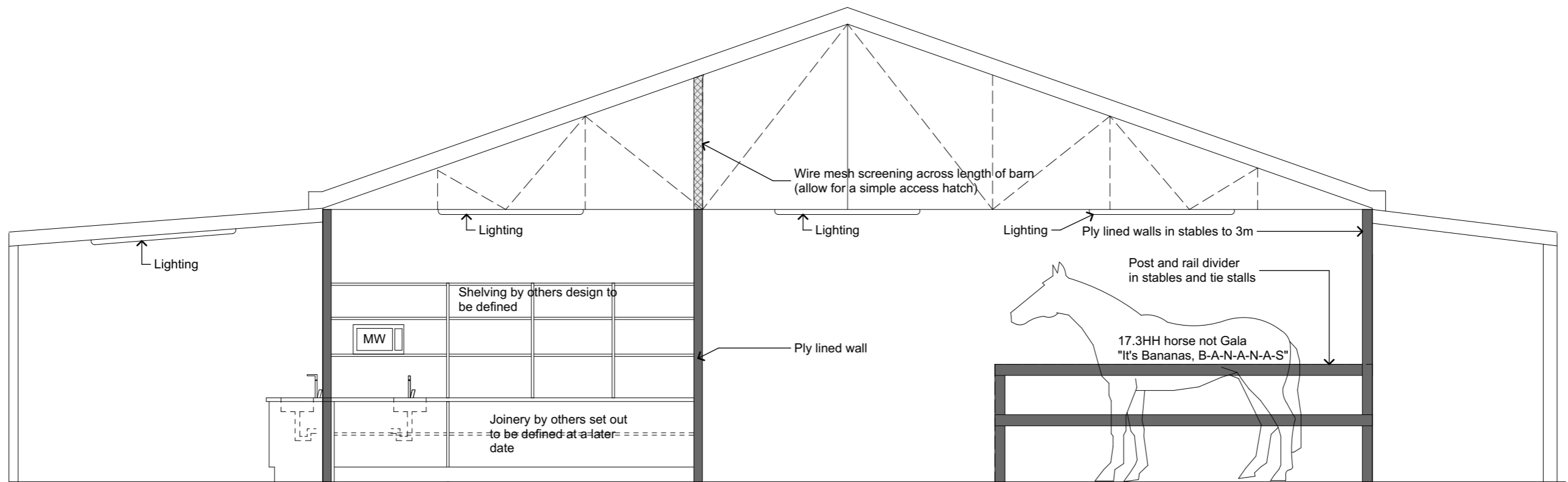
Client to supply exterior and pendant light fittings

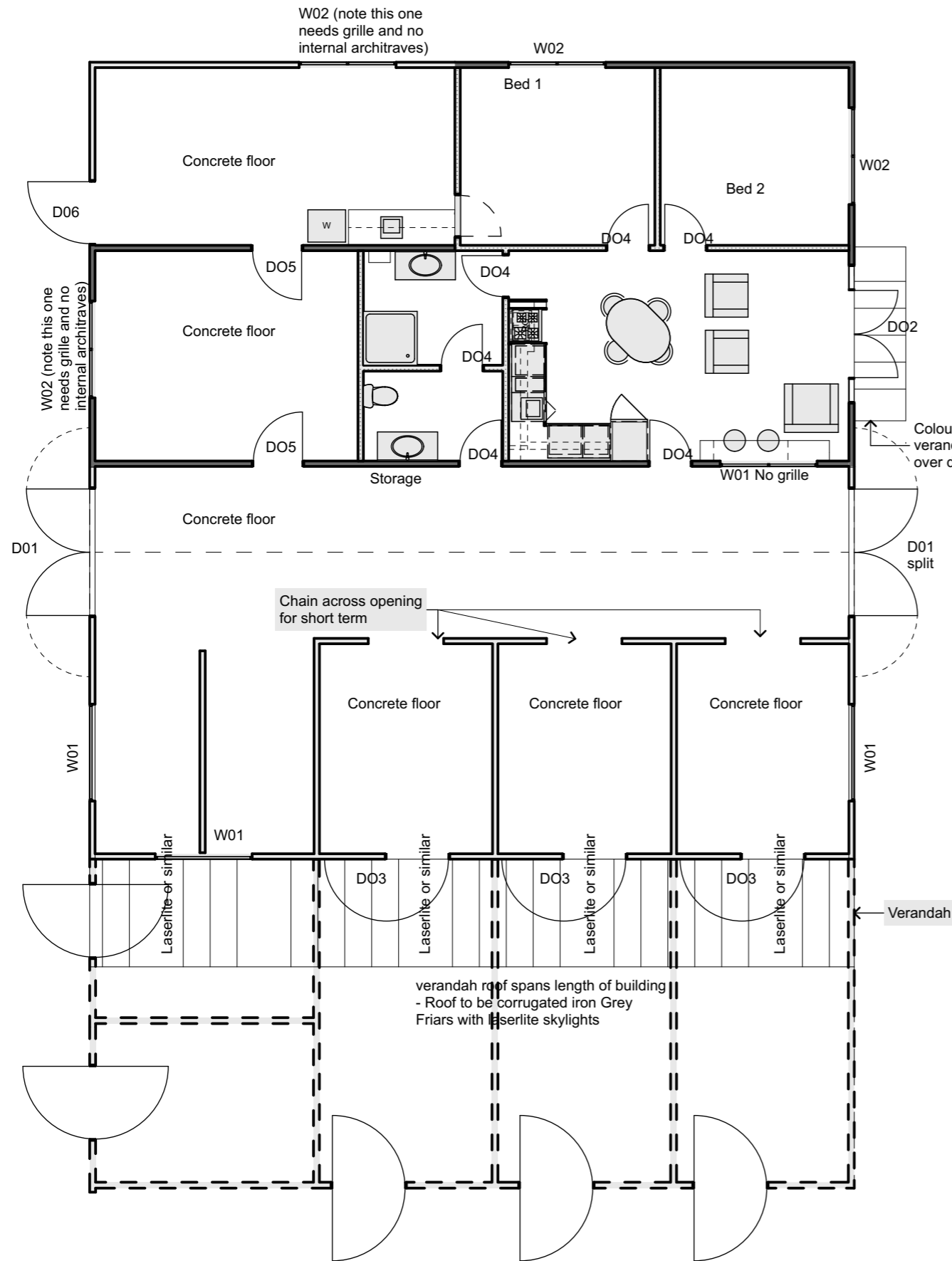
Note allow for USB charger in living area and one out in breezeway

Surface mounted Rexel Defender LED or similar fluorescent option (check cost) affixed to trusses (check height clearance over stables)





Hose Reel outside





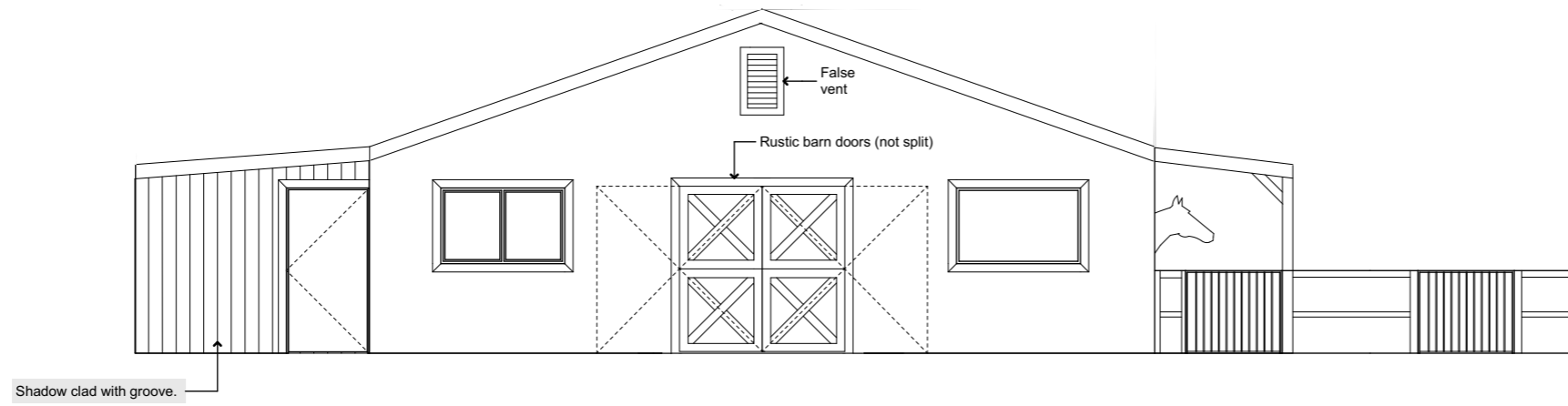


Wall/Window/Door Key

-  Insulated exterior wall with ply cladding board/batten style and stained ply cladding interior wall face (stained 2 coast Resene Rocksalt with aquaclear)
 -  Insulated Interior wall clad with stained ply cladding - x2 coats Resene Rocksalt with Aquaclear over
 -  Uninsulated exterior clad with ply cladding board/batten style. Where shown in stable area the ply lining is to be on both sides of walls 20mm thick and to go up to 3m stud and to be coated with x3 coats Aquaclear
 -  Post and rail walls/fences clad with perf steel capping (stops horses chewing)
- D01** D01 - Barn Doors: hinged to open 180deg approx solid timber with decorative T&G/X brace detail - (same style as exterior split stable doors). South doors to be full height. North doors to be split as per stable doors
- D01 split**
- D02** D02 - Aluminium french doors with opening awning window on one side. 810 door leaves with .450mm opening sidelights - 120mm rough sawn architraves
- D03** Split stable door barn style. allow to anchor back whilst open. Note: fixings to be rounded and not sharp.
- D04** Standard 810mm hollowcore paint finish doors
- D05** Standard 960mm hollowcore paint finish doors
- D06** 1200 w x 2400 h Wire mesh steel gate lockable
- W01** W01 1800w x 1130h x 1300mm sill to floor Non-opening (allow hinged grille mounted over window on inside of stable)
- W02** W02 1800w x 1130h x 1300mm sill to floor Awning openings on both sashes 120mm Rough sawn architraves for exterior. Interior architraves to be 90mm flat to be paint finish.

Roof: Roof to be Corrugated Iron Grey Friars with Laserlite (or similar) skylights. refer elevations for skylight locations

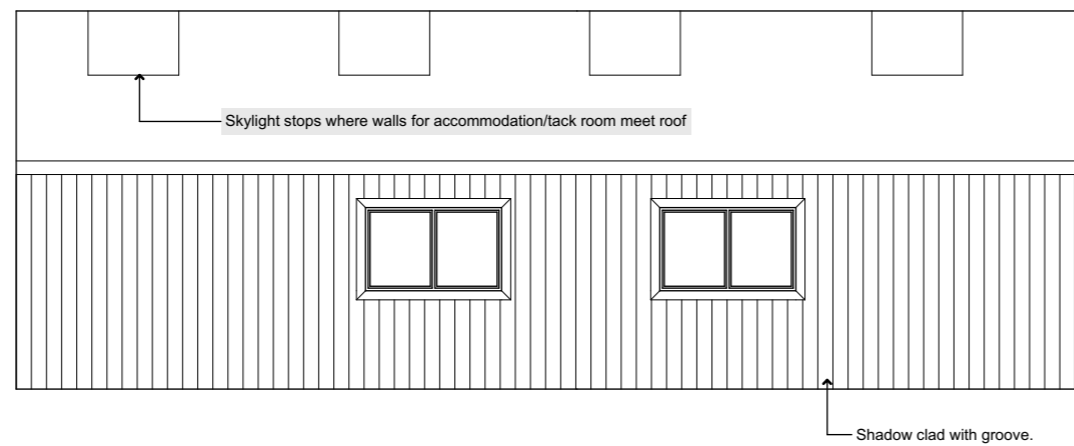
Architraves/coving: Internal architraves and ceiling coving to be 90mm flat square profile paint finish.



1

Elevation 1 South

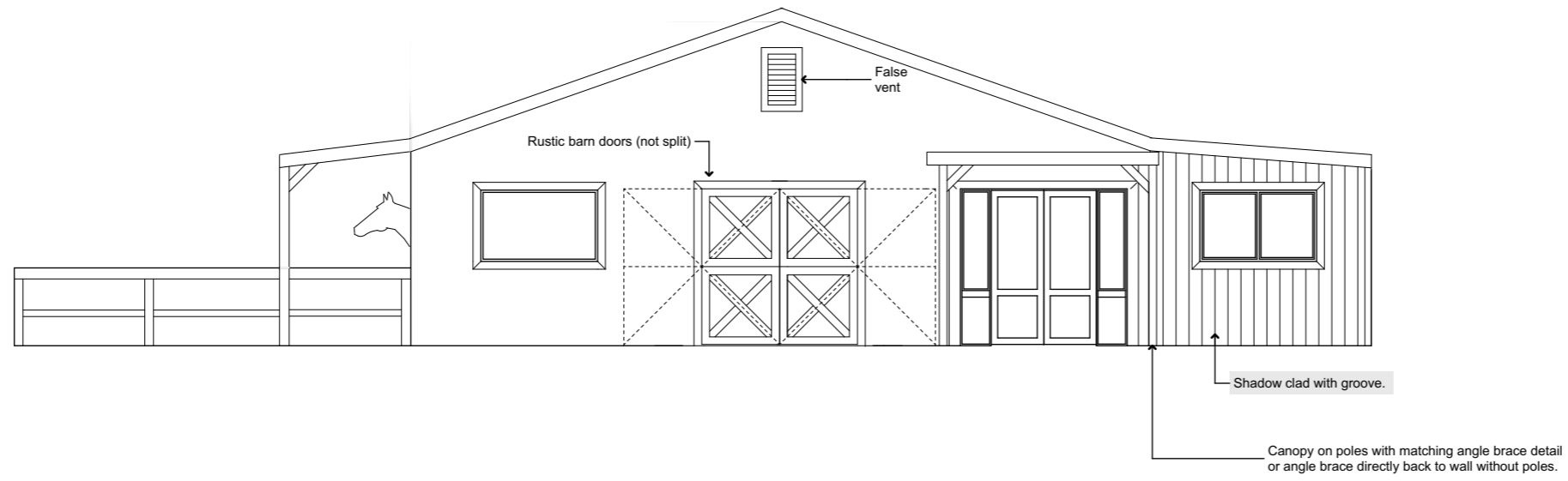
1:100



2

Elevation 2 West

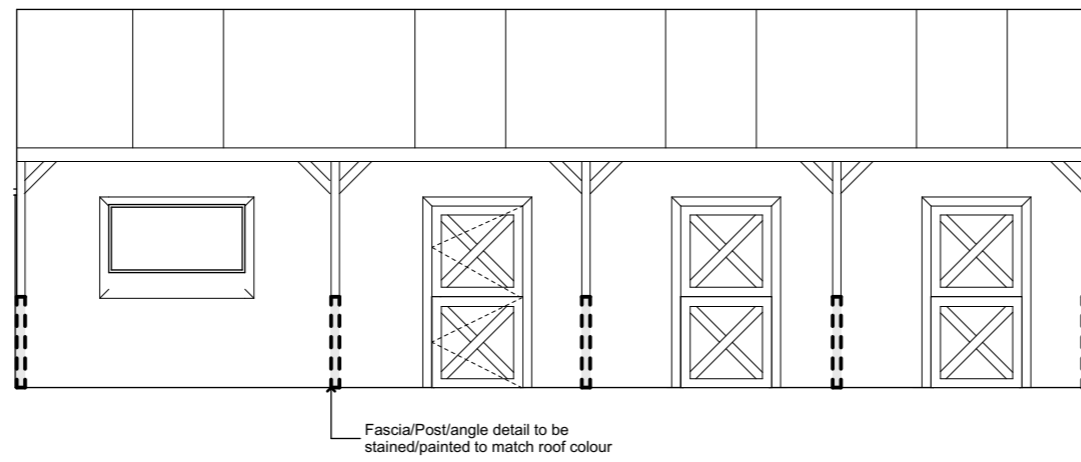
1:100



1

Elevation 3 North

1:100



2

Elevation 4 East

1:100

