



Troughs

3monkeez[®]
innovate. create. deliver.



2022

3monkeez[®]

www.3monkeez.com.au

sales@3monkeez.com.au

Troughs



Contents

| | | | |
|--------------------------------|----|---|----|
| Pattern Trough 1 | 3 | Walls End Pattern Trough Off the Shelf | 11 |
| Pattern Trough 2 | 4 | Practical Activities Trough | 12 |
| Pattern Trough 3 | 5 | Practical Activities Trough Off the Shelf | 13 |
| Pattern Trough 4 | 6 | Practical Activities Trough with 80mm Hob | 14 |
| Pattern Trough 4 Off the Shelf | 7 | Pattern Trough PWD | 15 |
| Flushline Trough | 8 | Pattern Trough PWD Off the Shelf | 16 |
| Art Trough | 9 | Flat Splashbacks | 17 |
| Walls End Pattern Trough | 10 | | |



Troughs

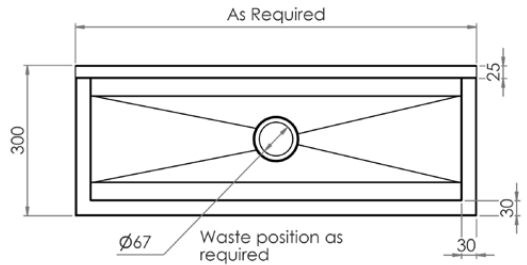


Pattern Trough 1

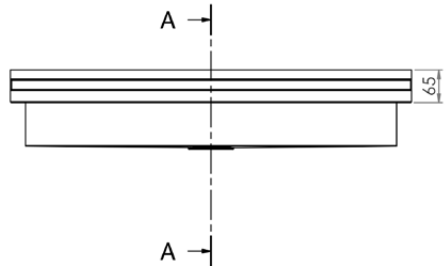
M-PT-1

- Constructed from 1.2mm 304 or 316 grade satin stainless steel
- Outlet as required
- Length as required - max 4000mm
- Wall brackets manufactured from square tube with pre-drilled fixing holes
- Splashback height modified on request
- Custom made products incur a lead time

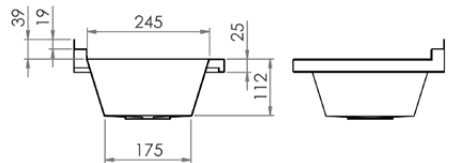
Top



Front



Side



Troughs

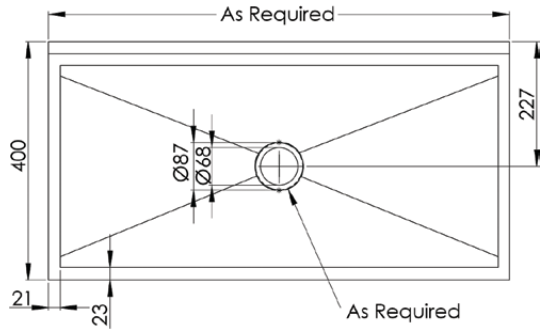


Pattern Trough 2

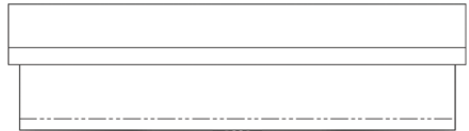
M-PT-2

- Constructed from 1.2mm 304 or 316 grade satin stainless steel
- Outlet as required
- Length as required - max 4000mm
- Wall brackets manufactured from square tube with pre-drilled fixing holes
- Splashback height modified on request
- Custom made products incur a lead time

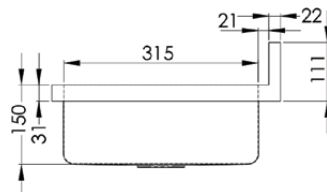
Top



Front



Side



Troughs



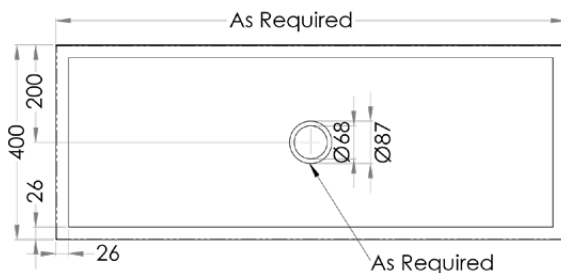
Pattern Trough 3

M-PT-3

- Constructed from 1.2mm 304 or 316 grade satin stainless steel
- Outlet as required
- Length as required max 1500mm
- Wall brackets manufactured from square tube with pre-drilled fixing holes
- Easy to clean design
- Splashback height modified on request
- Custom made products incur a lead time



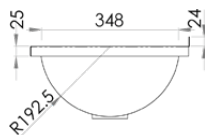
Top



Front



Side



Troughs

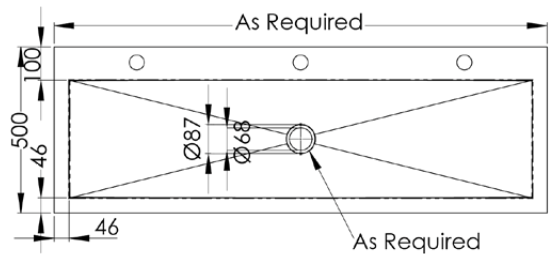


Pattern Trough 4

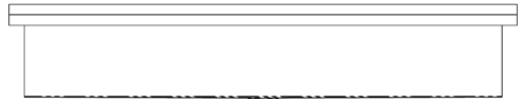
M-PT-4

- Constructed from 1.2mm 304 or 316 grade satin stainless steel
- Outlet as required
- Length as required - max 4000mm
- Tap holes as required
- Wall brackets manufactured from square tube with pre-drilled fixing holes
- Splashback height modified on request
- Available pre-plumbed
- 1200mm available off the shelf - Centre outlet (PT-4-1200)
- Custom made products incur a lead time

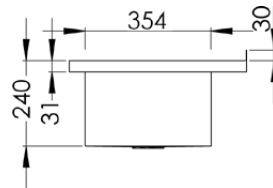
Top



Front



Side



Troughs



Pattern Trough 4 Off the Shelf

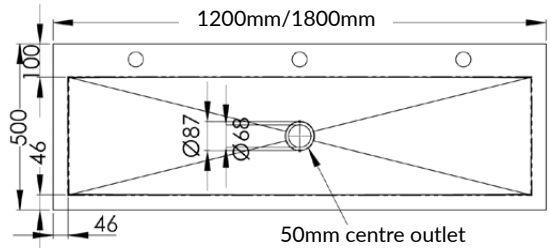


PT-4-1200

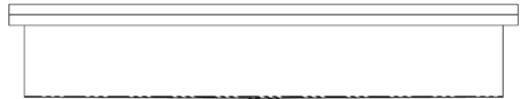
PT-4-1800

- Constructed from 1.2mm 304 grade satin stainless steel
- Tap holes as required
- Wall brackets manufactured from square tube with pre-drilled fixing holes
- Available pre-plumbed
- Custom sizes available (M-PT-4)

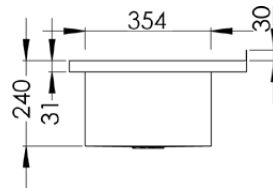
Top



Front



Side



| PRODUCT CODE | CAPACITY |
|--------------|-----------------|
| PT-4-1200 | Capacity - 94L |
| PT-4-1800 | Capacity - 145L |

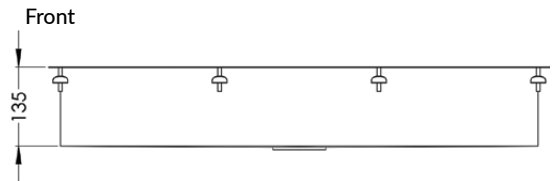
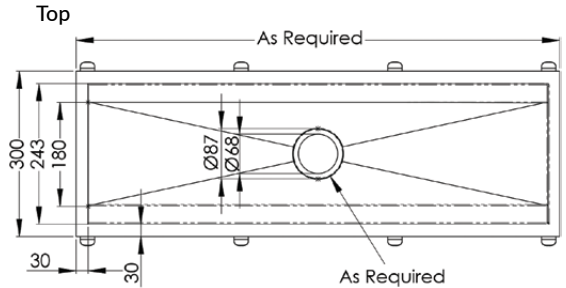
Troughs



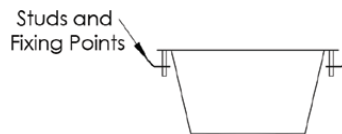
Flushline Trough

M-PT-5

- Constructed from 1.2mm 304 or 316 grade satin stainless steel
- Outlet as required
- Length as required - max 4000mm
- Complete with fixing clips and studs
- Custom made products incur a lead time



Side



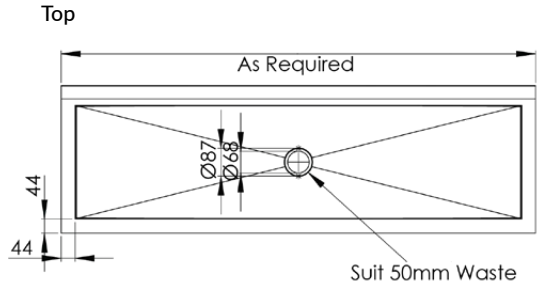
Troughs



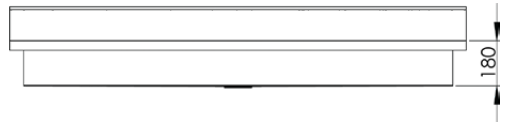
Art Trough

M-PT-6

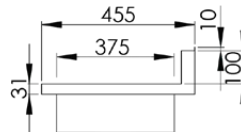
- Constructed from 1.2mm 304 or 316 grade satin stainless steel
- Outlet as required
- Length as required - max 4000mm
- Splashback height modified on request
- Wall brackets manufactured from square tube with pre drilled fixing holes
- Custom made products incur a lead time



Front



Side



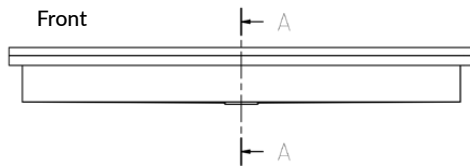
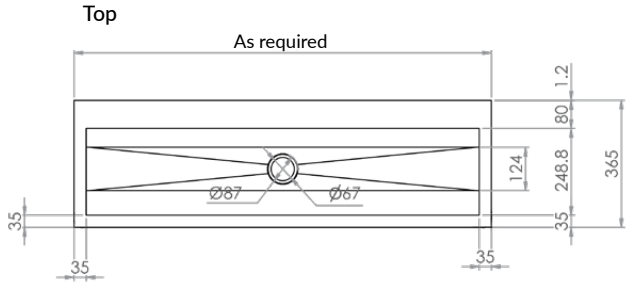
Troughs



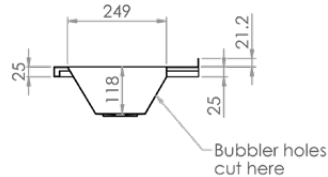
Walls End Pattern Trough

M-PT-7

- Constructed from 1.2mm 304 or 316 grade satin stainless steel
- Tap holes as required
- Available pre-plumbed
- Length as required - max 4000mm
- Outlet as required
- Radius external corners optional
- Splashback height modified on request
- Available with optional lockable lid
- Flat bar wall brackets with pre drilled fixing holes
- Custom made products incur a lead time



Side



Optional pre-plumbing available with your choice of tapware

Pillar Taps

45° Bubbler



Suggested mounting height for drinking trough:

Infant - 550mm

Primary - 700mm

Secondary - 900mm

Suggested mounting height for wash trough:

Infant - 550mm

Primary - 650mm

Secondary - 700mm

Troughs

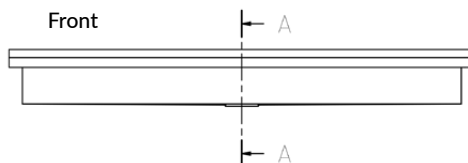
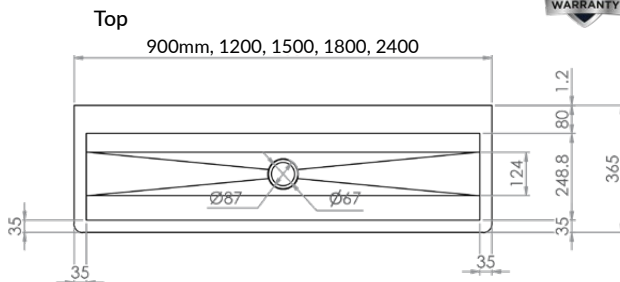


Walls End Pattern Trough Off the Shelf

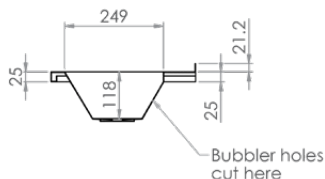


PT-7

- Centre outlet
- Constructed from 1.2mm 304 grade satin stainless steel
- Tap holes as required
- Available pre-plumbed
- Radius external corners
- Separate flat splashback available on request
- Wall brackets manufactured from stainless flat bar with pre-drilled fixing holes
- Custom sizes available



Side



Optional pre-plumbing available with your choice of tapware

Pillar Taps

45° Bubbler



| PRODUCT CODE | CAPACITY |
|--------------|----------------|
| PT-7-900 | 900mL - 18.5L |
| PT-7-1200 | 1200mL - 25L |
| PT-7-1500 | 1500mL - 31.5L |
| PT-7-1800 | 1800mL - 38L |
| PT-7-2400 | 2400mL - 51.5L |

Suggested mounting height for drinking trough:

Infant - 550mm

Primary - 700mm

Secondary - 900mm

Suggested mounting height for wash trough:

Infant - 550mm

Primary - 650mm

Secondary - 700mm

Troughs

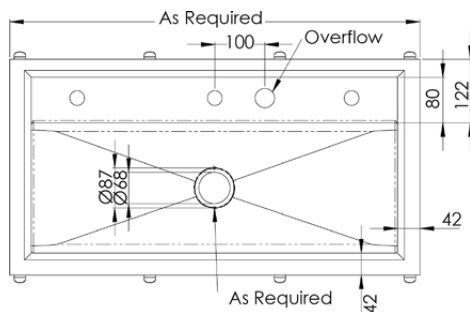


Practical Activities Trough

M-PT-8

- Constructed from 1.2mm 304 or 316 grade satin stainless steel
- Outlet as required
- Length as required - max 4000mm
- Tap holes as required
- Available pre-plumbed
- Custom made products incur a lead time

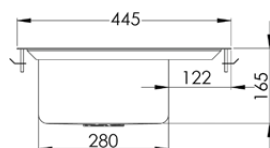
Top



Front



Side



Troughs

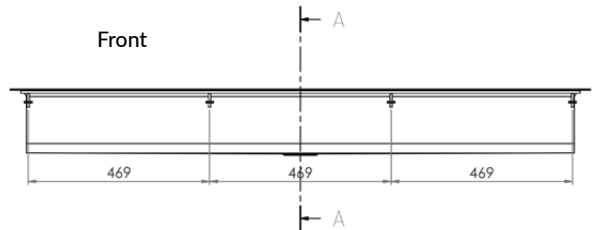
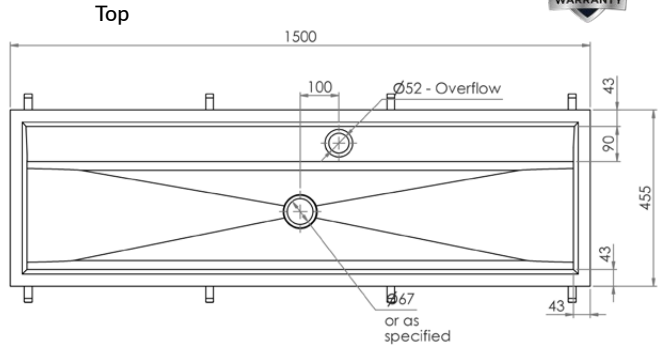


Practical Activities Trough Off the Shelf

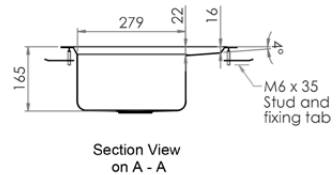


PT-8-1500

- 1500mm off the shelf
- 50mm centre outlet
- 40mm overflow hole
- Constructed from 1.2mm 304 grade satin stainless steel
- Tap holes as required
- Available pre-plumbed
- Capacity 65L



Side



Troughs

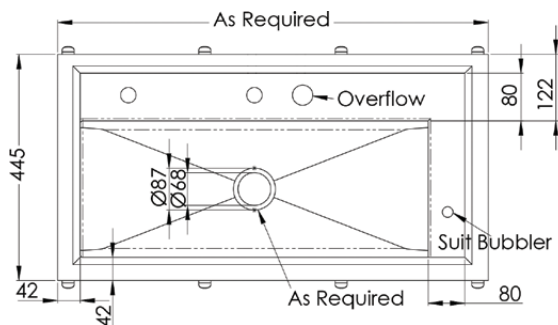


Practical Activities Trough with 80mm Hob

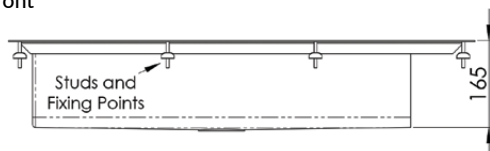
M-PT-9

- Constructed from 1.2mm 304 or 316 grade satin stainless steel
- Outlet as required
- Length as required - max 4000mm
- Available pre-plumbed
- Tap holes on request
- 80mm side hob for bubbler tap - on left or right as required
- Custom made products incur a lead time

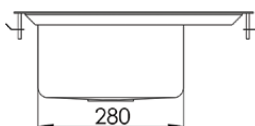
Top



Front



Side



Troughs



Pattern Trough PWD

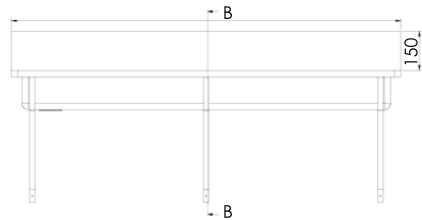
M-PWD

- Constructed from 1.2mm 304 and 316 grade satin stainless steel
- 150mm boxed splashback
- Length as required - max 4000mm
- Outlet as required
- Tap holes as required
- Radius to external only or external and internal corners
- Available pre-plumbed
- Custom made products incur a lead time

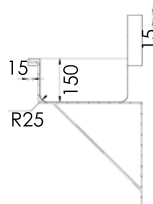
Top



Front



Side



Optional pre-plumbing available with your choice of tapware

Bib Taps



90° Bubblers



Suggested mounting height for drinking trough:

- Infant - 550mm
- Primary - 700mm
- Secondary - 900mm

Suggested mounting height for wash trough:

- Infant - 550mm
- Primary - 650mm
- Secondary - 700mm



Troughs



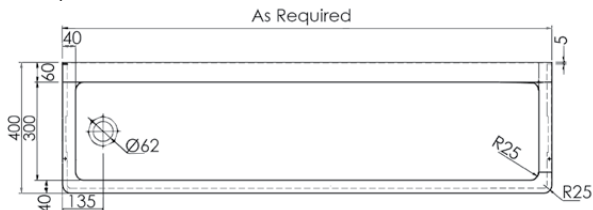
Pattern Trough PWD Off the Shelf



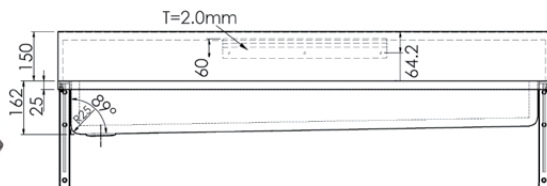
PWD

- Constructed from 1.2mm 304 grade satin stainless steel
- 150mm boxed splashback
- Tap holes as required
- External and internal corners
- Available pre-plumbed
- Custom sizes available

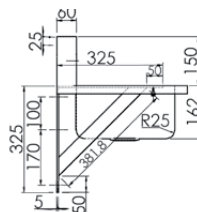
Top



Front



Side



Optional pre-plumbing available with your choice of tapware.



Bib taps



90° Bubblers

| PRODUCT CODE L/H Outlet | PRODUCT CODE R/H Outlet | CAPACITY |
|----------------------------|----------------------------|----------|
| PWD-900L | PWD-900R | 38L |
| PWD-1200L | PWD-1200R | 50.7L |
| PWD-1500L | PWD-1500R | 63.2L |
| PWD-1800L | PWD-1800R | 77.6L |
| PWD-2400L | PWD-2400R | 97.9L |
| PWD-3000L | PWD-3000R | 118L |

Suggested mounting height for drinking trough:

Infant - 550mm

Primary - 700mm

Secondary - 900mm

Suggested mounting height for wash trough:

Infant - 550mm

Primary - 650mm

Secondary - 700mm

Troughs



Flat Splashbacks



TROUGHS

SB-300X900

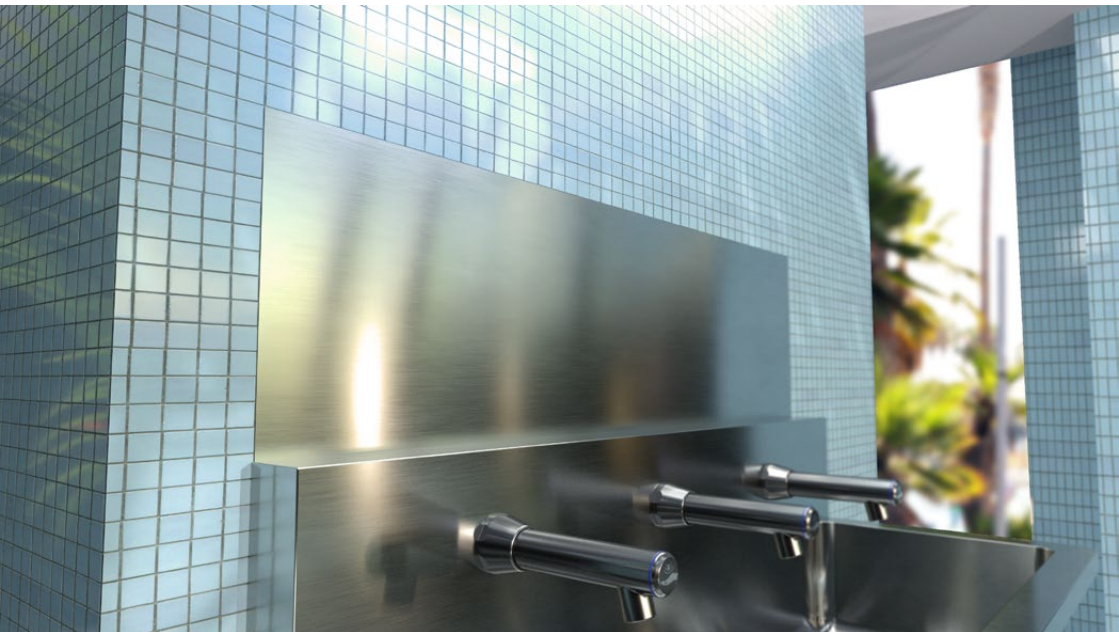
SB-300X1200

SB-300X1500

SB-300X1800

SB-300X2400

- Flat splashback - Suits all troughs
- 1.2mm 304 Grade S/S
- Custom sizes or 316 grade available on request





NSW 02 9627 6111

VIC 03 9357 6562

QLD 07 3881 0322

WA 08 6305 0681

SA 0408 299 443

ACT 0408 446 961

TAS 03 6344 7060

NT 0447 382 658

FNQ 07 4775 6956

3monkeez

www.3monkeez.com.au

sales@3monkeez.com.au