

VidaSpace®

VidaBook
— 2024



VidaSpace Auckland Showroom
105 St. Georges Bay Road, Parnell,
Auckland, New Zealand

VidaSpace Wellington Showroom
1 College Street, Te Aro,
Wellington, New Zealand

0800 119 388
hello@vidaspace.co.nz
vidaspace.co.nz

VidaSpace Christchurch Showroom
143 Victoria Street, Christchurch
Coming mid-2024

Head Office and Distribution
20 Roe Street, Levin
New Zealand

Our Roots

The Brand	04
Our History	06
Our Showrooms	08
Our People	10

Portfolio

Harvest Lane	18
Niwa Residence	22
Eastbourne Residence	26
Pitau Road	30
Te Atatu Residence	34
The Orchard	38
Kennard Home	42

Rare Finds

Oscar Ono	48
Douglas Fir	58
Hand Grade	64
Tabu Veneer	72

VidaSpace EcoSystem

The Story	84
360° Applications	88
Elements	94
Stairs	96
Metal Detailing	99
VidaPlank	100

The Classics

PurePlank	144
Parky	150
Shinnoki	158
Querkus	178
VidaGroove Slats	194
VidaGroove Reclaimed	200

Look for our FSC® Certified products throughout the Vidabook.
VidaSpace FSC CoC Certification: SGSHK-COC-510010.



space

— The Brand

Ambitious plans demand superior materials. We work with the oldest building material known to man, to create superior interior finishes that will continue to live beyond our lifetime.

Challenging the ordinary, we offer an exceptional range of responsibly sourced wooden finishes for any interior application. Born in nature, the beauty of our collections is that every piece is unique.

Our quest is to enable the boundaries of design to be defied, and to create something remarkable. We're continuously accelerating our craft to ensure our interior finishes empower the most demanding designs.

We have a responsibility to ensure that what we all leave behind us, will be enjoyed for generations to come. Not only is timber one of the longest standing building materials in existence, but still today it is one of the most advanced, natural, renewable, and sustainable materials for construction. Choosing wood is proactive climate protection.

Our materials are honest. Our team of experienced consultants can collaborate with you to elevate your interior and will ensure you'll know what to expect from the beginning, so no matter how large or small your plans are, the result is extraordinary.

The History

The Simmons family are anchored by over 30 years of timber experience. Beginning with Walter Simmons - a structural engineer, Paul's father, and Jimmy and Brad's grandfather. Paul's background was in construction and window joinery, and his brother David came from the joinery industry.

The family business 'Artline' was founded in **1988** in Levin, and by **1992** was selling a range of NZ-made solid pine kitset furniture. In **1994** the company evolved to 'Artline Timber Supplies' with the tagline "Quality - Service - Satisfaction" which saw it through the next 15 years.

2000 - With the new millennium came the biggest milestone yet - building and operating their own timber sawmill and wood processing operation to supply kiln dried, sawn, profiled timber products to building merchants and the joinery market.



In **2002**, now called "ATS Timber Wholesalers", the business moved to 20 Roe Street which is still the current VidaSpace head office location today.



Fast-forward to April **2015** when on a business trip to the UK, Paul and Jimmy conceived the foundations for a new brand. VidaSpace was founded with the core value and vision to bring premium timber finishes for the most demanding designs to the NZ interiors market. By June, Jimmy left ATS to embark on the VidaSpace journey - a website was launched, the inaugural VidaBook was produced and sent to specifiers nationwide, one container of stock was ordered from Europe, and so it began.

2016 - VidaSpace's first pop-up 'showroom' was opened - a 15m2 office on the third floor of a building on Commerce Street in Auckland.

2017 - The flagship Auckland Showroom was opened on Saint Georges Bay Road in Parnell - a momentous step-up from the Commerce Street pop-up.



2018 - VidaSpace expands into Wellington, opening a pop-up showroom at BizDojo. Jimmy's brother, Brad Simmons, joins VidaSpace.

2019 - Paul sells ATS Timber to a local sawmilling family and joins VidaSpace full time.

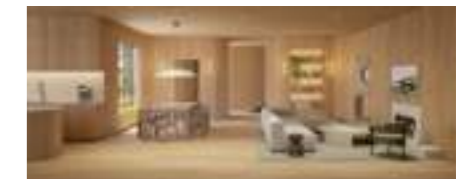


2020 - The VidaSpace Wellington showroom opens in the midst of a global pandemic and receives a Silver Pin at the Best Awards.

2021 - VidaSpace becomes the official New Zealand partner of Oscar Ono Paris and launches the collection of aged end grain oak - the most luxury and exclusive wood flooring ever brought to the NZ market.

2022 - VidaPlank is launched - a range of flooring, wall & ceiling linings, and the first collection that is 100% designed, curated, and developed by the VidaSpace team.

2023 - After an 8-month journey of research and identity development, VidaSpace underwent a brand refresh and launch of a new website and tagline: "Empowering Ambitious Design".



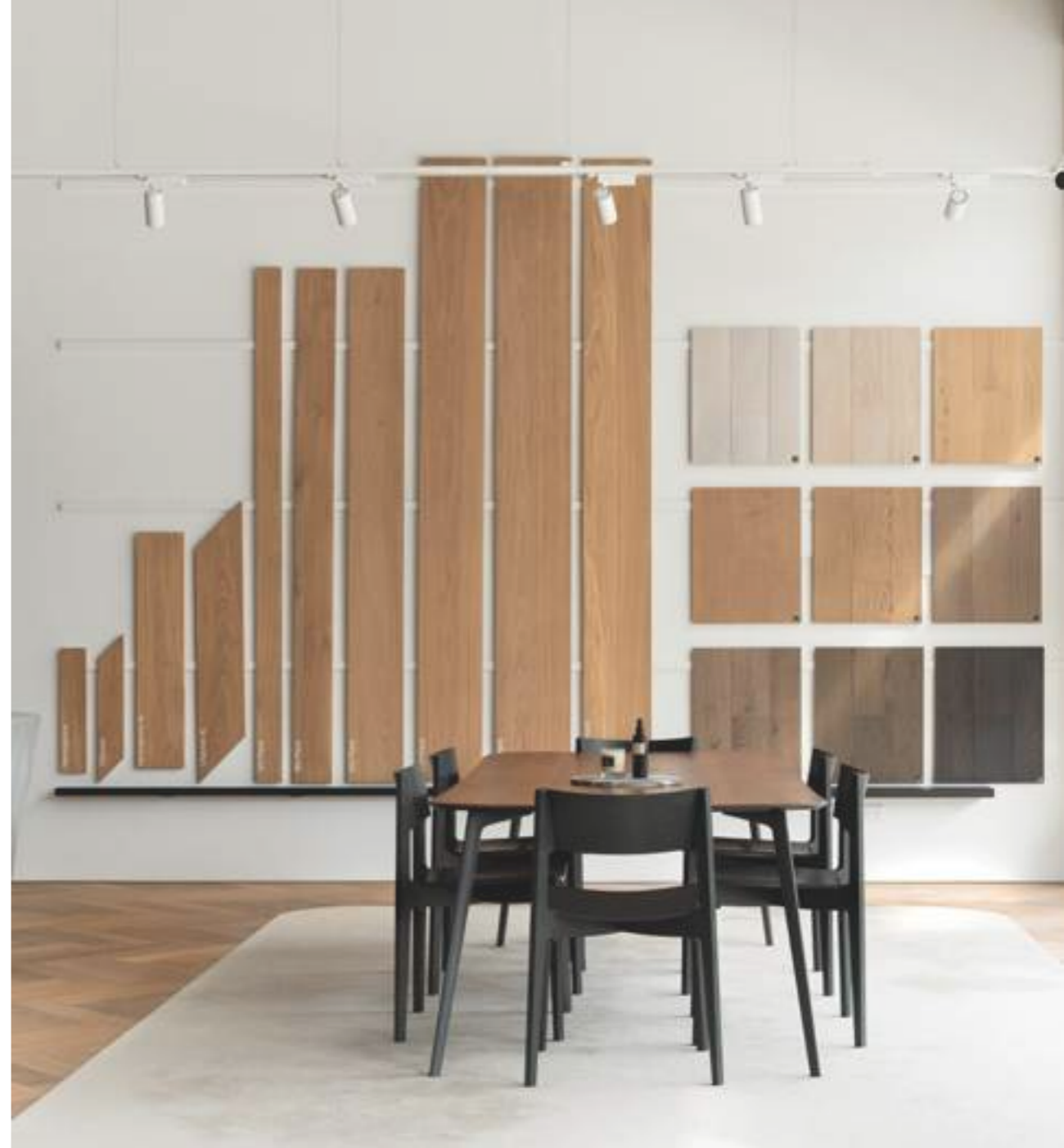
2024 - Introduction of the VidaSpace EcoSystem - the world's first integrated timber interior finishes specification system. The first VidaSpace South Island showroom is opening mid-2024 in Christchurch.

— Our Showrooms



VidaSpace Auckland Showroom

0800 119 388
auckland@vidaspace.co.nz
105 St Georges Bay Road,
Parnell, Auckland



VidaSpace Wellington Showroom

0800 119 388
wellington@vidaspace.co.nz
1 College Street,
Te Aro, Wellington

VidaSpace Christchurch Showroom

0800 119 388
143 Victoria Street,
Christchurch
Coming mid-2024

— Our People

We bring a fresh perspective, a daring spirit, and a commitment to forging uncharted territory. A family-run business with a strong foundation rooted in over three decades of timber expertise, strengthened by a team of experienced design and technical consultants.

Jimmy Simmons

Managing Director | *Dad Joke Enthusiast*
Diploma of Business



Ahlia McKenzie

Design + Marketing Manager | *Jetsetter*
Bachelor of Communication Studies,
Diploma of Interior Design



Paul Simmons

Director | *"Pa"*

Brad Simmons

Specification Consultant | *Team Chef*



Aaron McLean

Commercial Manager | *Mountain Biker*
Diploma of Business



Fran Coombe

Specification Consultant | *Cat Mom*
Bachelor of Spatial Design



Gavin How

Specification Consultant | *Pianist*



Carolina Sánchez

Auckland Showroom Consultant | *Yoga Instructor*
Bachelor of Interior Design
Diploma of Digital Marketing



Candayce Smith

Sales & Marketing Support | *Beach Bunny*



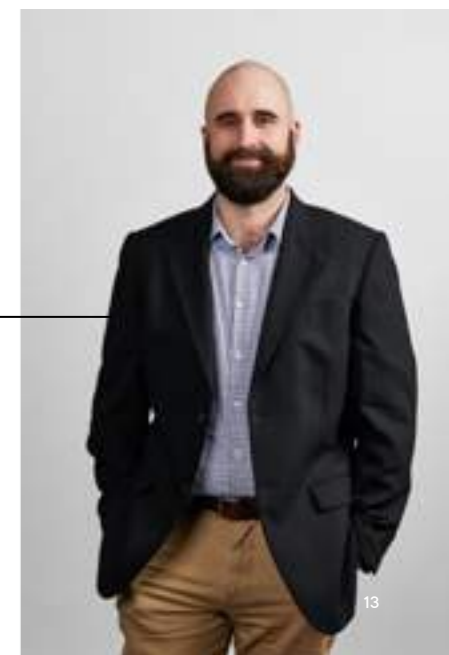
Meighan Dolan

Wellington Showroom Consultant | *Floristry Expert*



Matt Stewart

Technical Consultant | *Sandwich Connoisseur*
Certificate in Timber Flooring Installation





Jon Birch

Finance Manager | *Boxing Coach*



Ivan Booth

Samples & Dispatch Coordinator | *Hot Rod Engineer*



Liana Young

Marketing Coordinator | *Photographer*



Dennis Baker

Warehouse Manager | *Golfer*



Paul Cheriton

Warehouse & Dispatch | *Fisherman*



Portfolio



Harvest Lane

Residential Home by Venia Design



Mason & Wales | Cronin Kitchens | Sam Hartnett Photography

"A sophisticated family retreat.

The flooring was a custom colour created to suit the warm tones of the aged brass and cooler tones of the schist fireplace, the tone of the wood needed to sit in-between holding grey, ash and lighter oaky tones making for a neutral foundation."

- Jane Carolan

Custom Timber Flooring







Niwa Residence

Residential Home by Rowson Kitchens

"A thoughtful new build –

Designed by KR Architecture & built by Chad Niwa Building for his own family of four in Fitzroy, New Plymouth. The kitchen sits in a dramatic 6m void & Chocolate Oak veneer was specified to anchor the back wall in this space, along with complimenting the darker vein in the White Macaubas granite benching. Herringbone flooring in Ferro adds additional texture, along with the rendered splashback & shelving in the butlers pantry & the fluted custom painted island front panel that continues around to the drawer fronts. A custom beaded handle detail adds texture to the back wall along with the space tower pantry unit & integrated appliances. A mezzanine garden allows for indoor plants to gently cascade down the rendered wall above the kitchen, & a custom blade light over the island blends into the space while offering important task lighting."

- Annika Rowson



Eastbourne Residence

Residential Home by Seear-Budd Ross

“This home imitates its native surrounds through texture and tone;

The seamless exterior expression denotes little of the home’s sense of volume within – a feeling enhanced by the arrival sequence – and its pavilion-style layout. Clad entirely in New Zealand-grown macrocarpa, a timber that omits a fragrant, spicy scent, the entry nook is a “cave-like” space. In contrast, the adjoining living pavilion, featuring an exposed vaulted macrocarpa-clad ceiling, opens with a sense of overwhelming release. Here, generous views to the ocean draw the interiority outwards and natural light is plentiful; it is

lofty and dignified yet the feeling is understated and inviting. In addition, a notable level of craft has been employed throughout the home.

In this informal, coastal setting, the material selections are carefully considered to enrich the architecture. All the materials selected have a subtle softness and texture in their finish. Bandsawn textured oak VidaSpace floorboards compliment this approach and seamlessly integrate into the home’s architecture.”

- Thomas Seear-Budd







Pitau Road

Residential Home By
Kathrine McDonald Design

"A family home, a place to make memories."

The amazing VidaSpace flooring informed the interior palette throughout this property. The warm timber tones worked perfectly with the Dekton porcelain in the kitchen, fresh white walls, linen fabrics, and the brickwork spine, which runs from the exterior, through to the interior of this family home. The flooring was also installed on the powder room walls to offset the striking Concrete Nation freestanding basin, bringing in warmth, adding another layer of materiality and a vertical textural element."

- Kathrine McDonald





Te Atatū Residence

Residential Home by Material Creative

"Our clients love the tranquillity of being by the water."

A big part of the attraction of the home was its sea view. For them being near the water makes them feel relaxed. These references filter into the home via earthy tones combined with layers of texture and mixed materials, ensuring the spaces feel warm, relaxed, and comfortable.

The kitchen is sleek, constrained, sculptural. Its design absolutely maximises space, storage and bench space with a hidden scullery flowing to the laundry."

- Toni Brandso



The Orchard

Residential Home by Rowson Kitchens

"Set amongst established trees with calm green views.

A unique new build designed by KR Architecture & built by Chad Niwa Building for a family of six. Located in an Orchard in New Plymouth it is set amongst established trees with calm green views from the crittal window joinery. A neutral palette of warm white, custom render & rich Stardust walnut veneer compliment the travertine tiles, & the veneer was selected to also compliment the surrounding natural environment. V-groove panelling on the ceilings & walls offer additional texture, & the booth

seating & custom dining table allow close connection & conversation while comfortably seating up to twelve people – removing the need for a separate dining space. The back wall features a butlers pantry fitted with a Zenith Hydro G5 all in one sink mixer & an integrated cool drawer for beverage preparation, & a window seat with built in drawer storage offers an additional space to sit & converse or enjoy the lovely relaxing views."

- Annika Rowson



Kennard Residence

Residential Home by Nicola Ross Design



"Organic. Thoughtful. Modern."

Our studio was engaged on this project to complete a full interior joinery fitout, material selection and specification across the home. We worked to create an organic feel throughout the project that was thoughtful and modern. The use of the Shinnoki veneer was an easy choice and the ability to get an exact colour match to the stairs created a cohesive aesthetic that elevated the home into something really special. Its contribution to the textural elements across the home created a solid base that will endure in a timeless way."

- Nicola Ross



Nicola Ross Design | Inhouse Construction


Manhattan Oak Veneer | Custom Oak Timber Flooring







— Rare Finds

A narrow, cobblestone street in Paris, viewed from a low angle. A man in a black coat and hat is walking away from the camera down the center of the street. The street is flanked by tall, light-colored buildings with small windows and balconies. The cobblestones are arranged in a pattern that curves slightly to the right. The lighting is soft, suggesting an overcast day.

Oscar Ono

Made in Paris

Designed in partnership with Raphael Navot, Oscar Ono is undoubtedly the most luxurious wood flooring collection on the New Zealand market. A story of dedication, passion, and a deep-rooted connection to history. This reimagined flooring not only pays homage to the past but also celebrates the timelessness of exceptional and meticulous craftsmanship, ensuring that the cobblestone streets of ancient Paris continue to captivate the imagination in the present day.

Forêt by Oscar Ono

A handmade flooring and wall covering marquetry. Inspired by 19th-century cobblestone streets in Paris, Oscar Ono has spent many years reviving the wondrous tradition and give it a new contemporary life. Discover how you can personalise your own design with the six interchangeable Forêt patterns that are ready to install plank by plank with seamless connection.



Designed by Raphael Navot

Opus by Oscar Ono

An organic, endless pattern drawing inspiration from the age-old mosaic artistry in Venice. Immerse yourself in the intricate details, tracing the delicate lines that are masterfully achieved using a solitary tile. This design marvel embraces the essence of ancient mosaic techniques, featuring concealed repetitions that enable a flawless multi-directional application.





Forêt Natural

VS9001

Palmer Bar

Ignite Architects



Opus Natural

VS9006



Forêt Smoke

VS9002



Opus Smoke

VS9006



Forêt Black
VS9003



Opus Black
VS9007

Douglas Fir

Made in Germany

Grown in the Black Forest in Germany, and brought to New Zealand by VidaSpace, the unforgettable unique grain structure and seemingly limitless plank lengths are the essence of Scandinavian design. Each piece is meticulously crafted, ensuring that your space is adorned with a truly one-of-a-kind creation, custom-made to elevate your surroundings.



White Lye & White Oil



Smoked & Natural Oil



Hand Grade

Made in The Netherlands

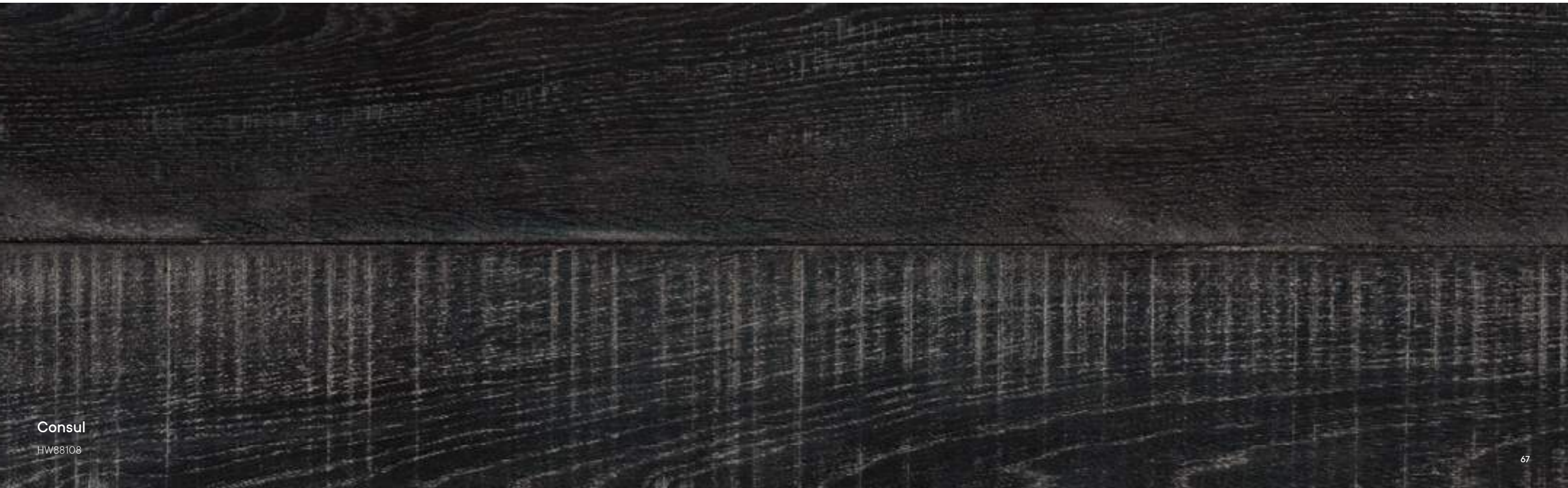
Designed to replicate banquet hall flooring from the Middle Ages, this collection is comprised of enormous mixed width planks up to four metres long and nearly half a metre wide. Every board is hand-sculpted and finished by wood artisans, featuring characterful undulating surfaces, natural visual scarring and water marks.





Neston

HW88104



Consul

HW88108



Duke

HW88107



Galway

HW88105



Whakatipu Residence

Cassels Green



Lake Hayes Road House

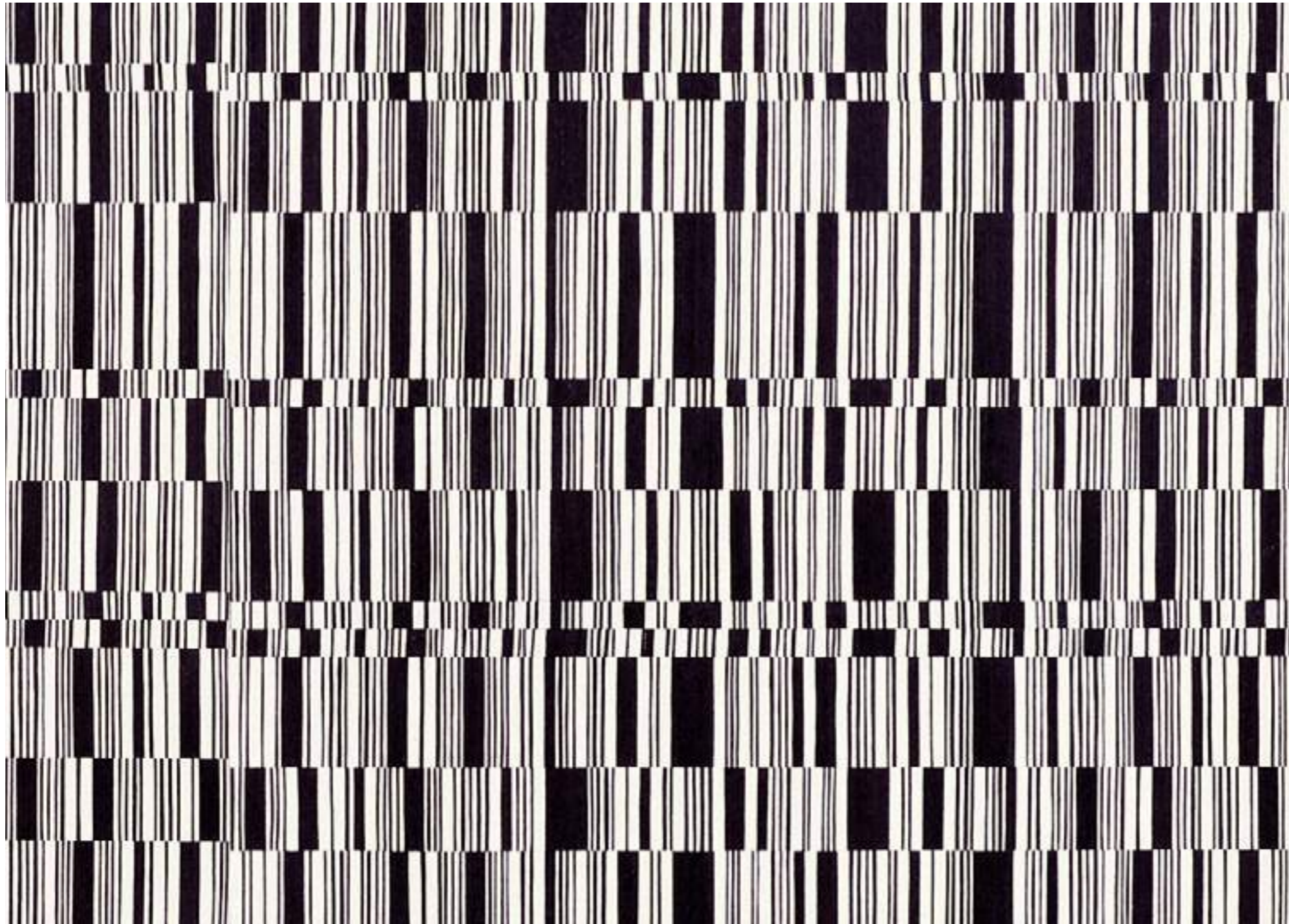
Mason & Wales



TABU Veneer

Made in Italy

TABU was founded in 1927 in Cantù, Italy, in the heart of Lombardy, and today it represents the Italian excellence in wood dyeing technology. Now brought to New Zealand by VidaSpace, the exotic range of TABU veneers are truly extraordinary.

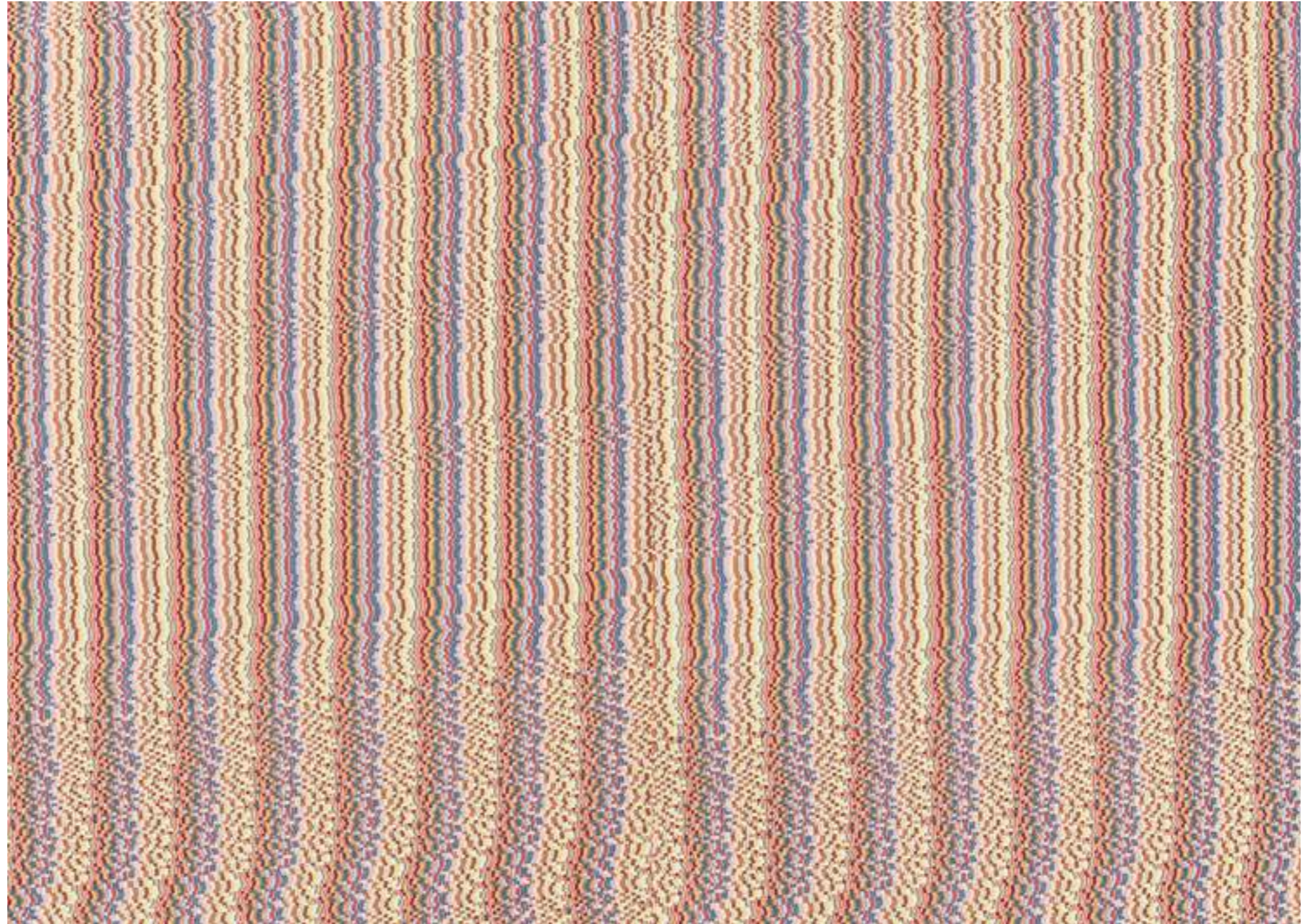


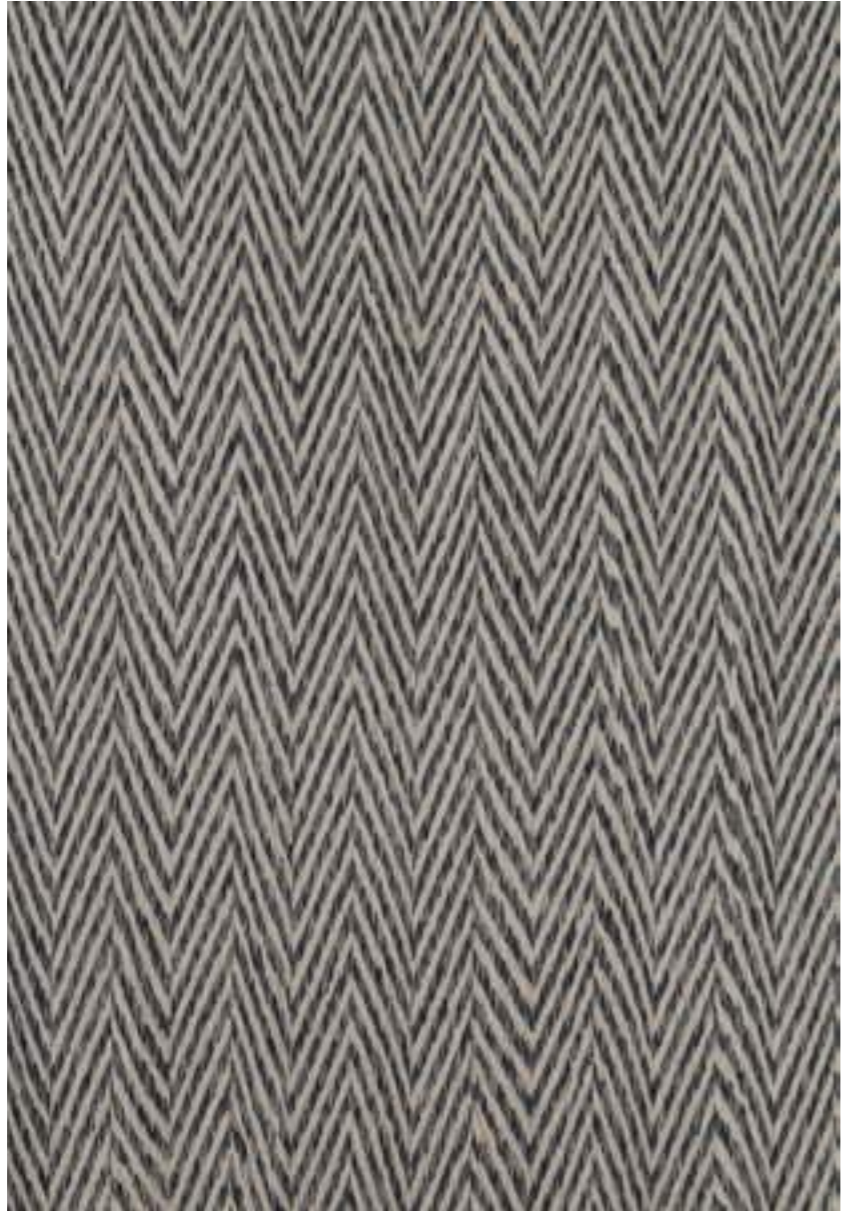
City Vibes is inspired by the urban world, by the city context that, due to its nature, is dynamic, always moving; by its vibrations and constant different stimuli following each other without stopping.

Designed by Federica Citterio + Williams Pompei

Punto Glitch represents a wood veneer infused with Italian heritage, drawing inspiration from the exquisite art of straw mosaic. Its aesthetic objective is to seamlessly blend the historic Italian technique with contemporary industrial design, echoing the intricate cross-stitch and square stitch patterns reminiscent of that era.

Designed by Clémence Plumelet





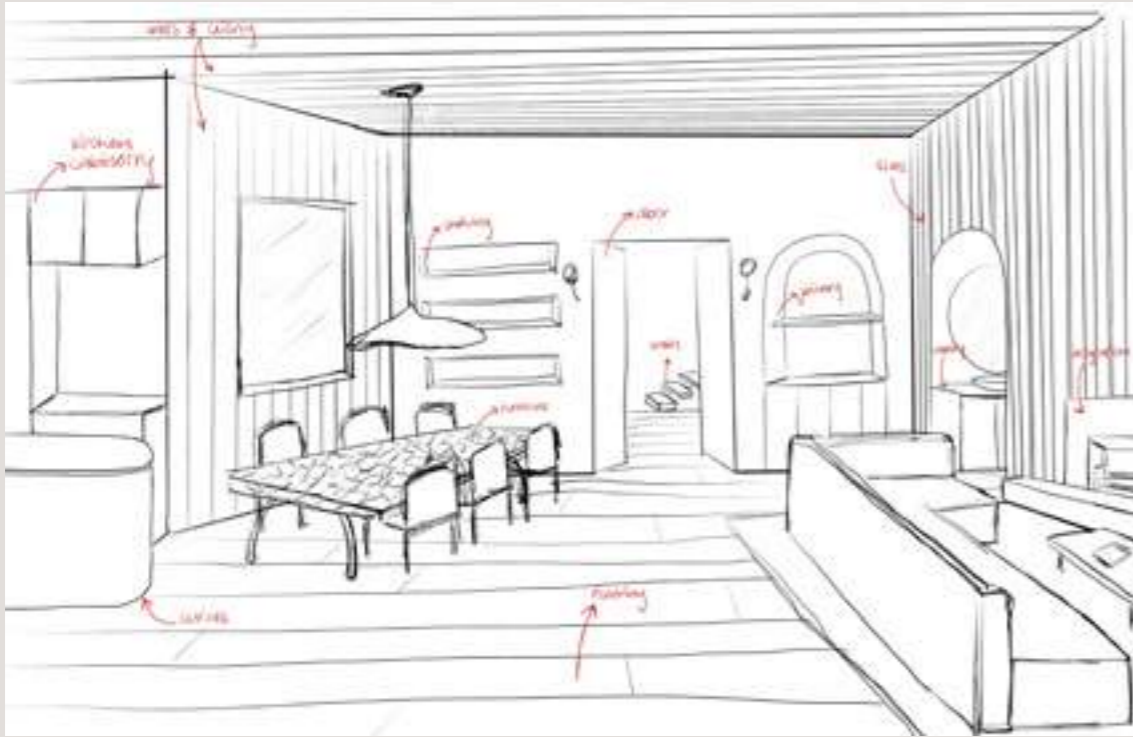
Spiga Herringbone is a symphony of craftsmanship and design. This iconic pattern, which has long graced textiles, can now infuse interior design with a touch of enduring elegance and charm.



A photograph of a forest path. The path is a dirt trail that curves through a dense forest. On the left side of the path, there are large, dark brown tree trunks and a thick carpet of green ferns. The right side of the path is also lined with trees and undergrowth. The lighting is soft and natural, suggesting a shaded forest environment. The overall color palette is dominated by greens and browns.

The world's first
integrated timber
interiors system™

— VidaSpace EcoSystem



The Story

The VidaSpace Ecosystem was developed to create a new and unique approach to specifying timber interiors, redefining the traditional designer + supply partner relationship. A fully integrated system of colour, limitless applications, installation systems, and aftercare.

Our EcoSystem is a single resource for all interior timber finishes and accompanying systems. Built on a

'colour-first' methodology, the VidaSpace EcoSystem removes traditional project and time constraints, empowering designers to explore the boundless possibilities of timber in design-led interiors.

Reinforced by leading installation & care systems for continued assurance, the VidaSpace EcoSystem is a whole new way of working with interior timber specification.

Designed in New Zealand

With an intimate knowledge of the local design industry, the foundations for the VidaSpace Ecosystem are the world-class innovation and design in New Zealand. Designed by us and made for VidaSpace with consideration by our partners in New Zealand, Italy, Belgium, and Denmark. Products and systems specifically developed with the New Zealand market, climate, and conditions in mind, that will last a lifetime in beautiful homes and commercial spaces across Aotearoa.



VidaSpace EcoSystem

Designed by the VidaSpace Team for New Zealand Designers. The VidaSpace EcoSystem breaks down traditional constraints to achieving consistency across different interior elements, finishes, and systems.



VidaColour

Built on the narrative of the raw beauty of New Zealand, inspired by the natural elements that we are fortunately surrounded by and immersed within. From soft coastal tones to dramatic terrain, our unique climatical temperaments and astrological environment, all influenced our team to create the VidaColour range. Developed for our prefinished VidaPlank colour collection, now expanded across all interior applications.



360° Applications

An unrivalled breadth of timber finishes can be selected with our product experts for every interior application. From flooring and staircases, to walls, ceilings, joinery, and beyond.

Installation & Care Systems

To extend the lifetime of your timber interiors, we have developed install and care systems for every application. Throughout the entire journey VidaSpace will support you; from detailing and specification, to installation, and finally utilising the space and caring for your finishes with our lifetime support.





360° Interior Applications

Flooring

Featuring *VidaPlank Lusso*



Kitchens

Featuring *Querkus Veneer + VidaColour Stain*



Stairs

Featuring *VidaPlank*



Joinery

Featuring *Querkus Veneer & VidaPlank*



Walls & Ceiling

Featuring *VidaPlank Fresco*



Doors

Featuring *Querkus Veneer + VidaColour Stain*



Integrations

Featuring Querkus Veneer + VidaColour Stain



Curves

Featuring Querkus Flex Veneer + VidaColour Stain



Slats & Acoustic Panels

Featuring Querkus Veneer Slats + VidaColour Stain

VidaColour Stains

Designed for colour-matching applications of European Oak components



Pumice



Sandstone



Mudbrick



Dawn



Mist



Haze



Slate



Equinox



Peat



Obsidian

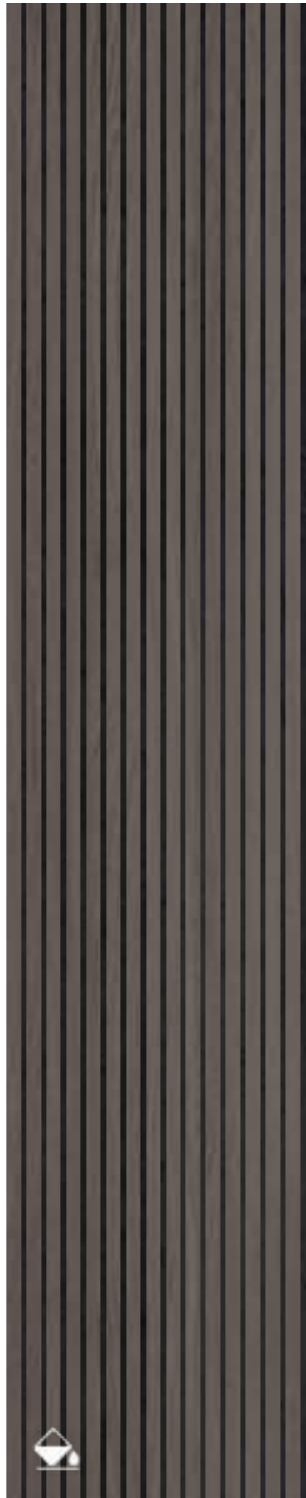
Elements

Our VidaColour elements can be combined for seamless 360° interior applications.

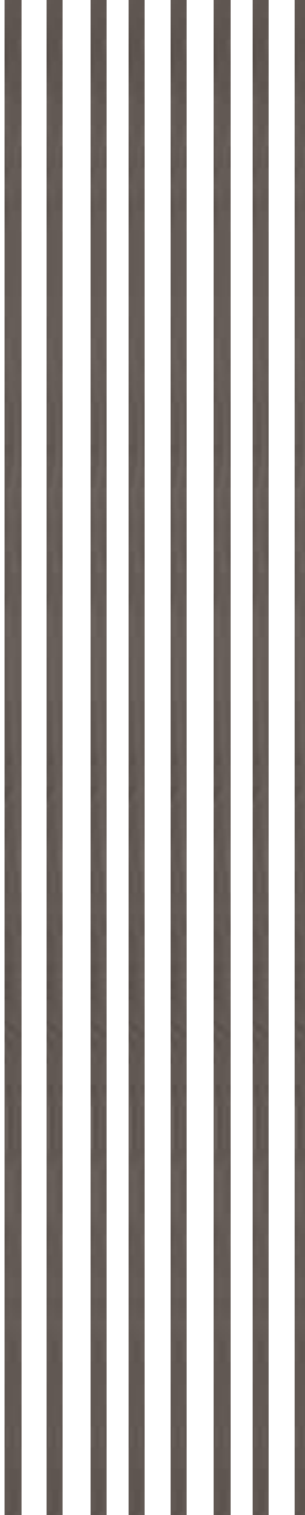


Flooring & Stairs

VidaColour Stain + VidaGroove Acoustic Slat Panel



VidaColour Stain + Querikus Slats



Curves

VidaColour Stain + Querikus Panels



3m

Stairs

VidaSpace specialise in custom staircase design. Whether your project calls for a standard stair profile or a bespoke design, every staircase created with VidaSpace will be robust, functional, and look seamless.



The Classic - Flush



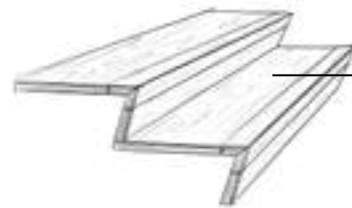
The Picture Frame



The Classic - Square



The Waterfall



The Classic - Raked



The Border



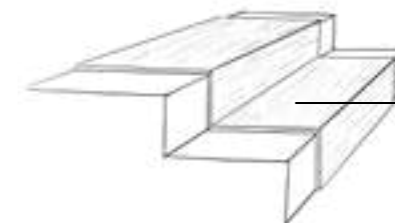
The Beam Stack



The Seamless - Flush



The Seamless - Square



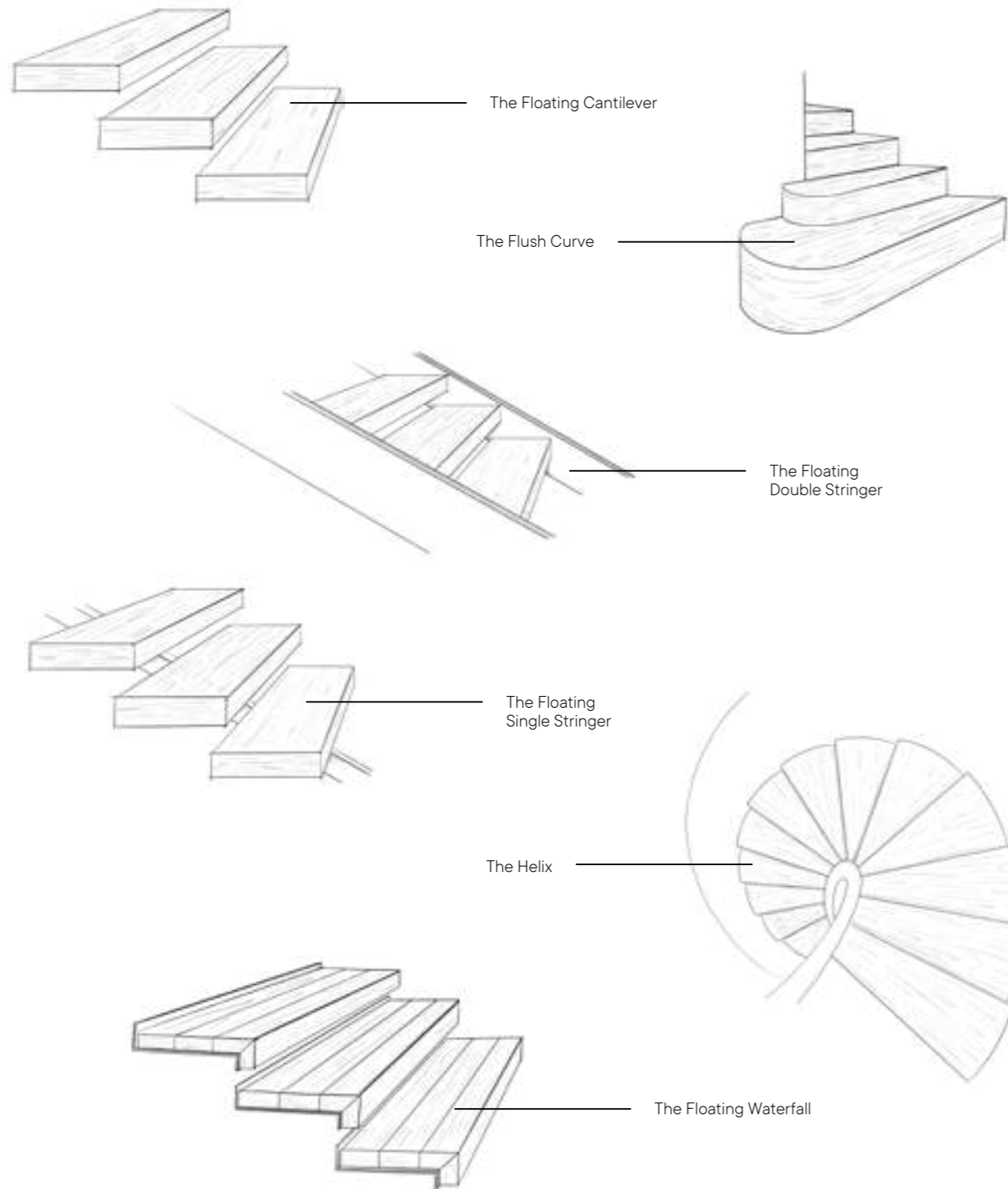
The Runner



The Seamless - Raked



The Painted Riser

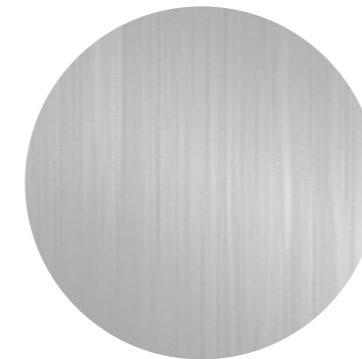


Metal Detailing

Elevate your design with sleek and durable metal trims. These precision-crafted accents seamlessly blend style and functionality. Add a touch of modern sophistication while protecting the edges of your beautiful wood finishes.



Organic Brass



Silver



Pewter



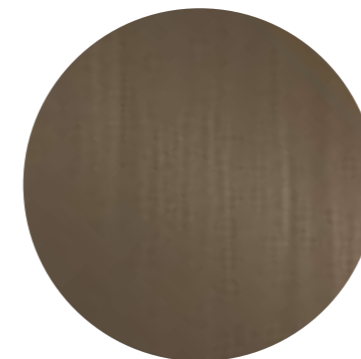
Light Champagne



Champagne



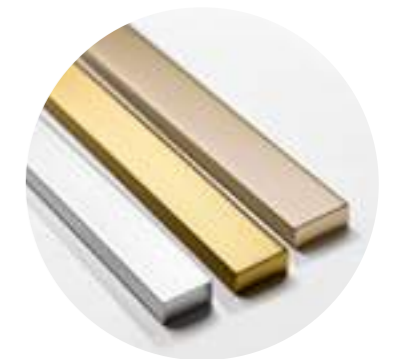
Light Bronze



Smoked Bronze



Matte Black



VidaPlank

Designed in NZ. Made in Italy.

Our hero range and an integral part of our VidaSpace EcoSystem, VidaPlank embodies our philosophy that colour comes first, but functionality is key.

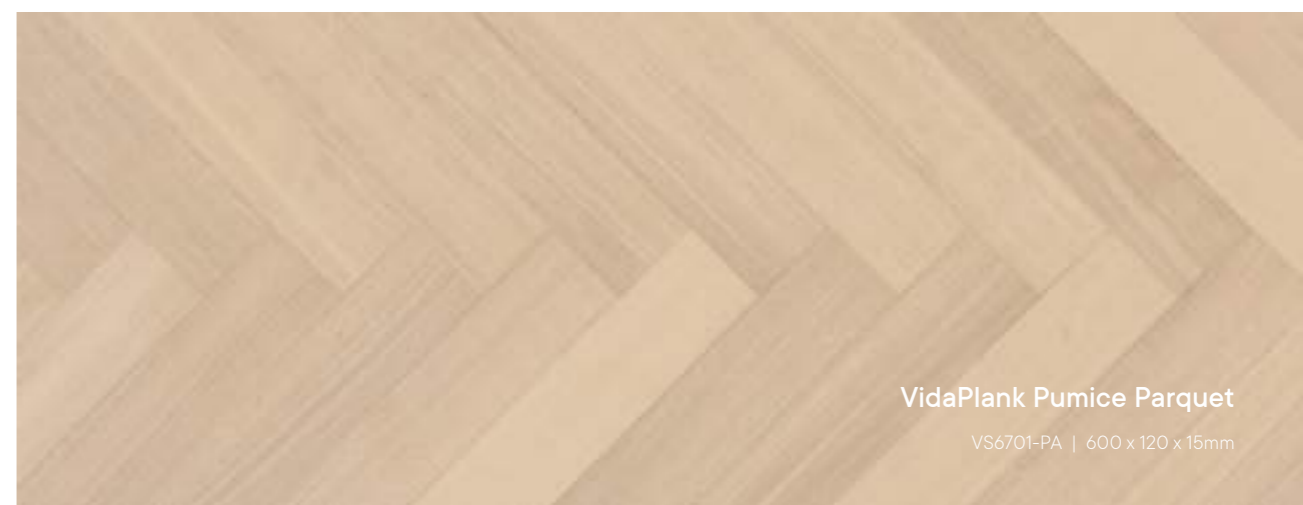
Pumice

A delicate blend of muted greys and pale tans, capturing the essence of coastal landscape shaped by nature. This captivating hue embodies the soft, pale tones of natural pumice stone, echoing the subtle beauty of nature's unique formations.



VidaPlank Pumice Lusso

VS6701-LU | 192 x 15 x 2350mm



VidaPlank Pumice Parquet

VS6701-PA | 600 x 120 x 15mm



VidaPlank Pumice Fresco

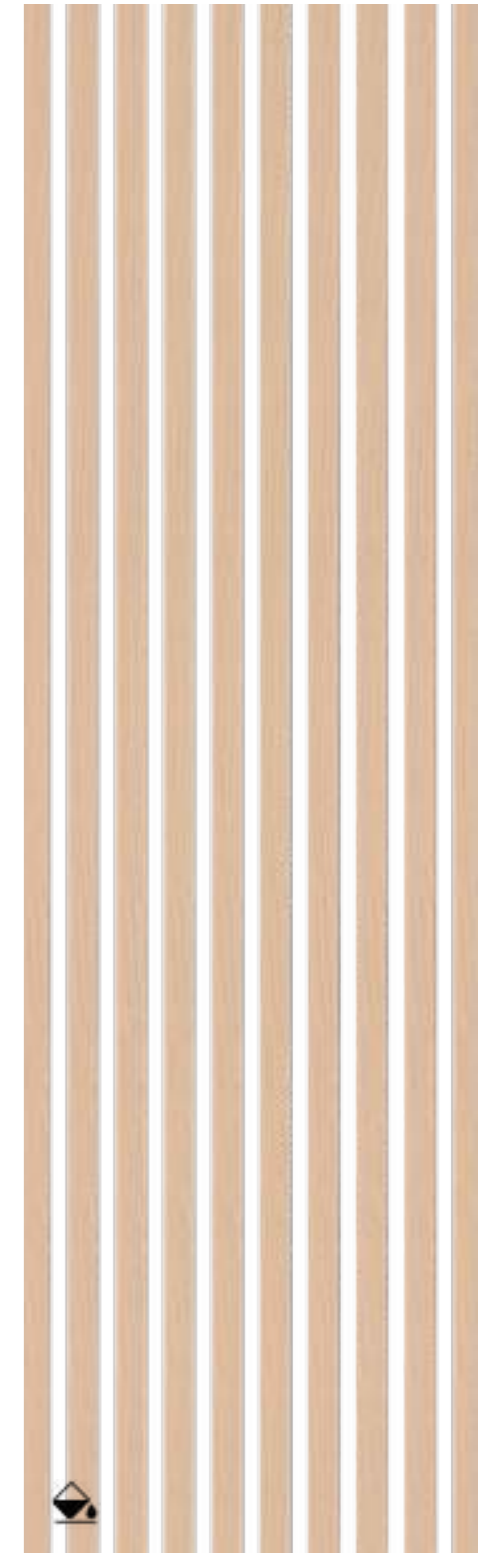
VS6701-FR | 152 x 15 x 2350mm



Pumice Stain + Querkus Panel



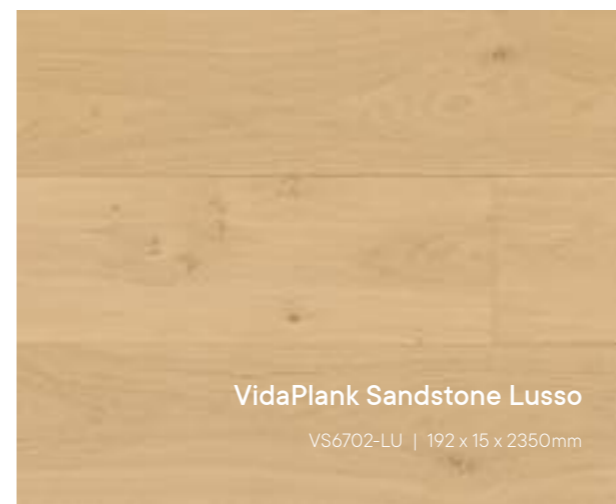
Pumice Stain + VidaGroove Slat Panel



Pumice Stain + Querkus Slats

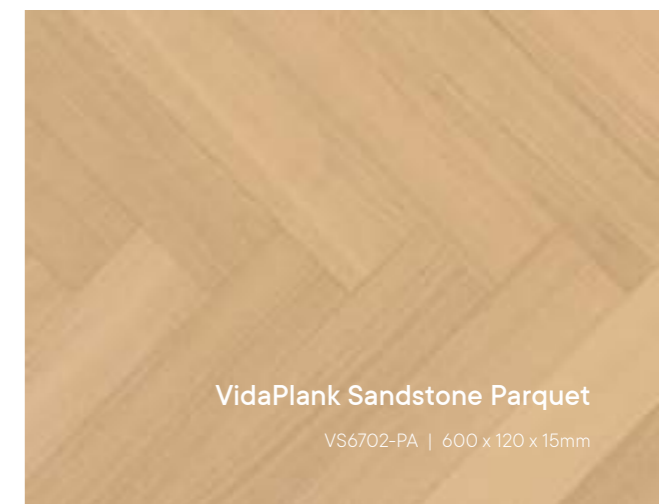
Sandstone

A timeless colour with warm, golden tones of natural sandstone, evoking the spirit of rugged landscapes and the beauty of nature's artistry. A harmonious blend of warm beige and subtle tans, reminiscent of the textured surfaces found in desert terrains and historic architecture.



VidaPlank Sandstone Lusso

VS6702-LU | 192 x 15 x 2350mm



VidaPlank Sandstone Parquet

VS6702-PA | 600 x 120 x 15mm



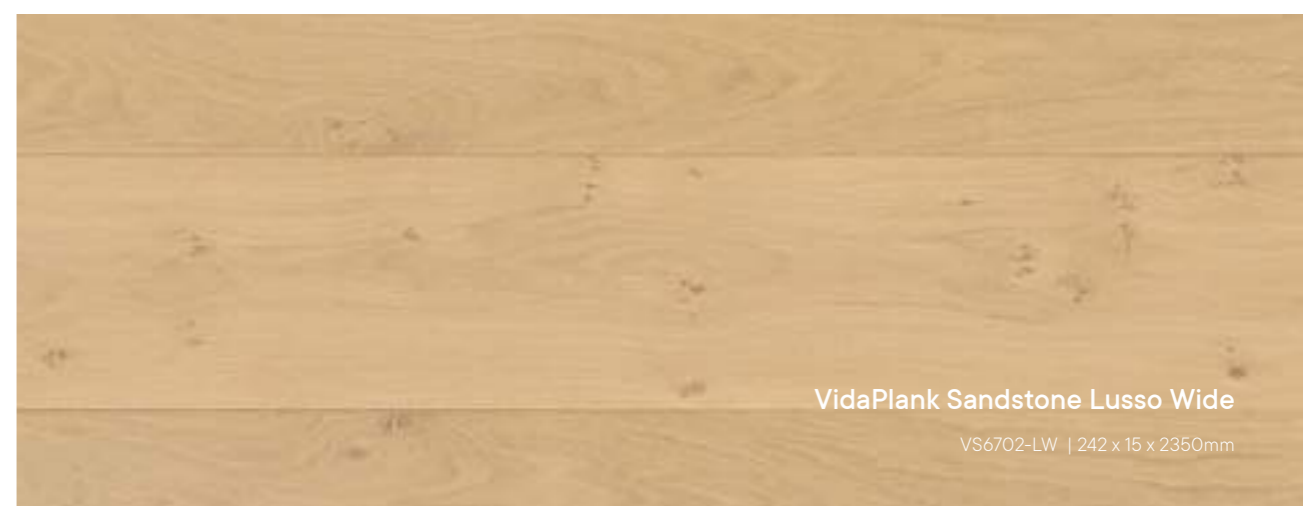
VidaPlank Sandstone Fresco

VS6702-FR | 152 x 15 x 2350mm



VidaPlank Sandstone Rustico

VS6702-RU | 192 x 15 x 2350mm

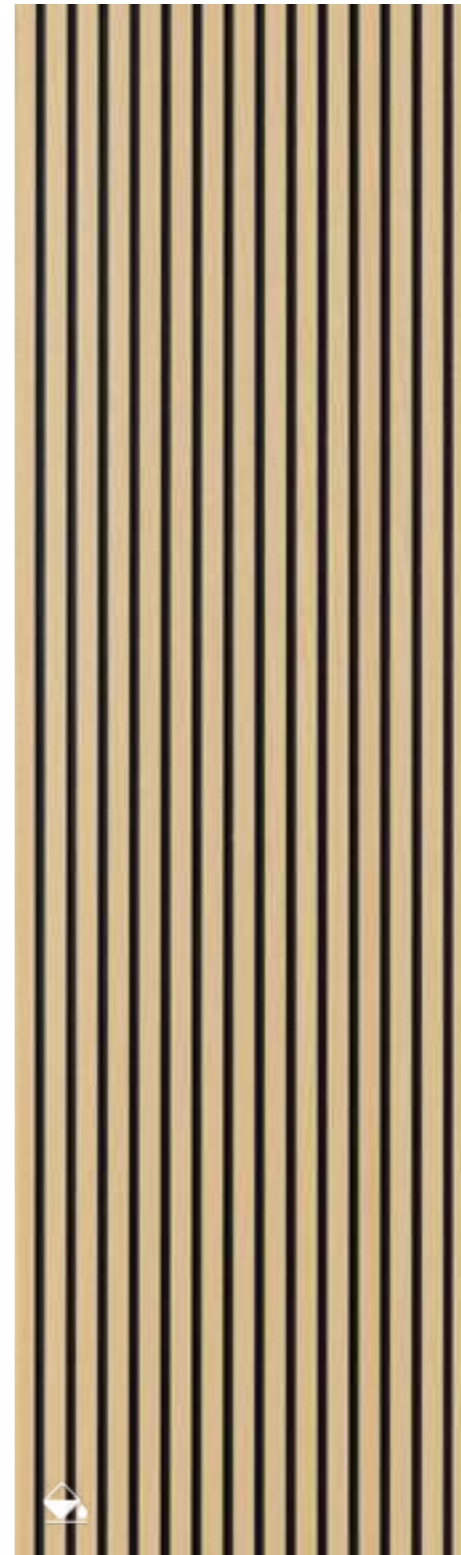


VidaPlank Sandstone Lusso Wide

VS6702-LW | 242 x 15 x 2350mm



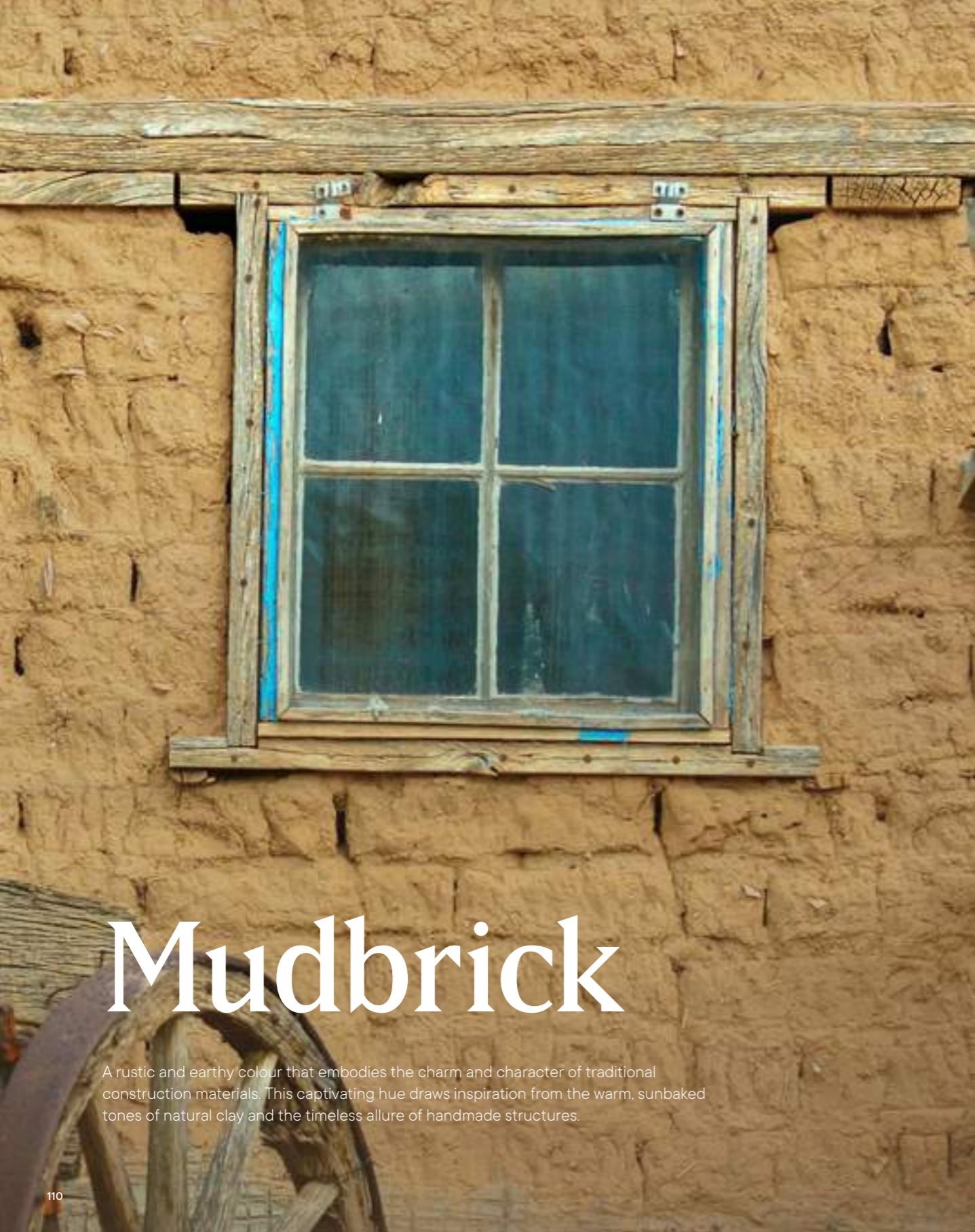
Sandstone Stain + Querkus Panel



Sandstone Stain + VidaGroove Slat Panel

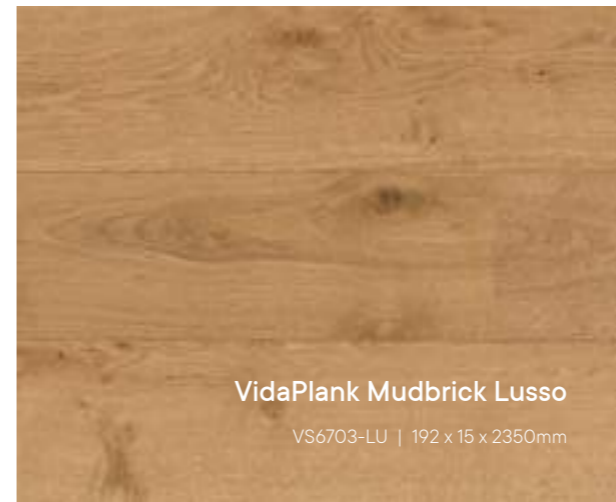


Sandstone Stain + Querkus Slats



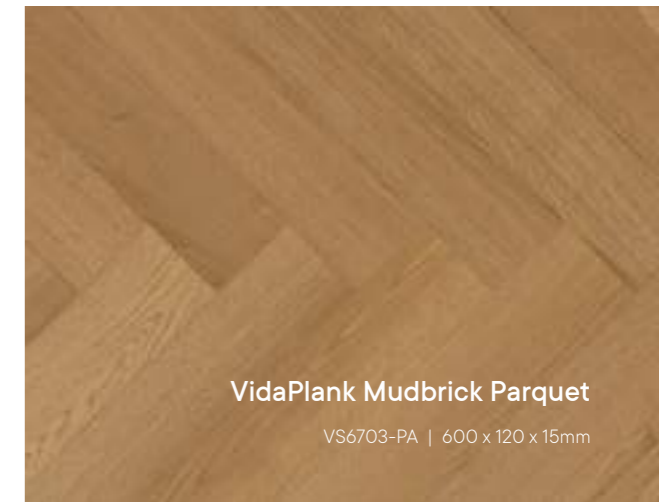
Mudbrick

A rustic and earthy colour that embodies the charm and character of traditional construction materials. This captivating hue draws inspiration from the warm, sunbaked tones of natural clay and the timeless allure of handmade structures.



VidaPlank Mudbrick Lusso

VS6703-LU | 192 x 15 x 2350mm



VidaPlank Mudbrick Parquet

VS6703-PA | 600 x 120 x 15mm



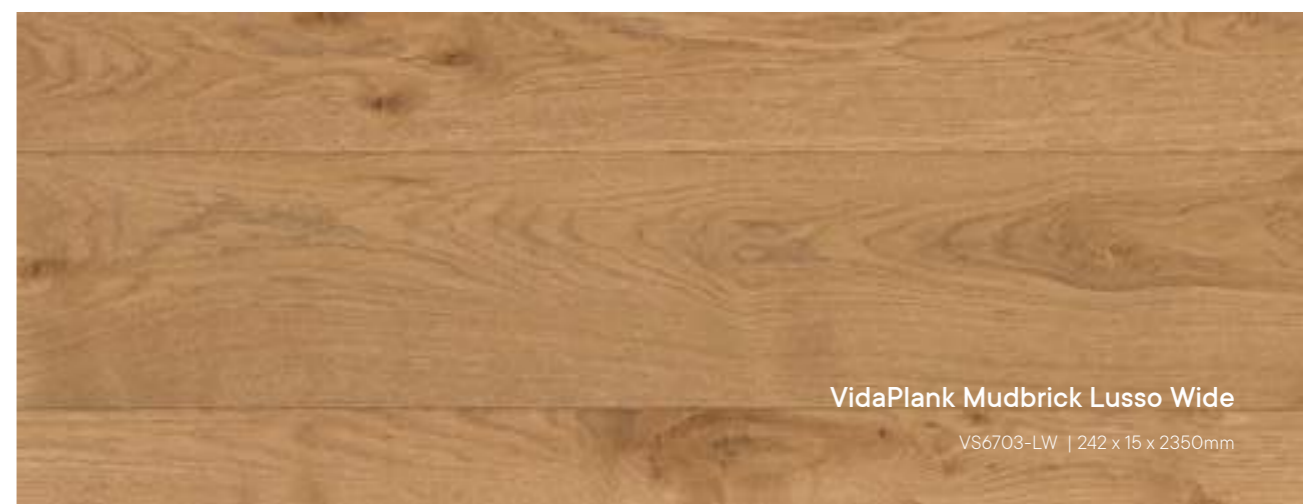
VidaPlank Mudbrick Fresco

VS6703-FR | 152 x 15 x 2350mm



VidaPlank Mudbrick Rustico

VS6703-RU | 192 x 15 x 2350mm

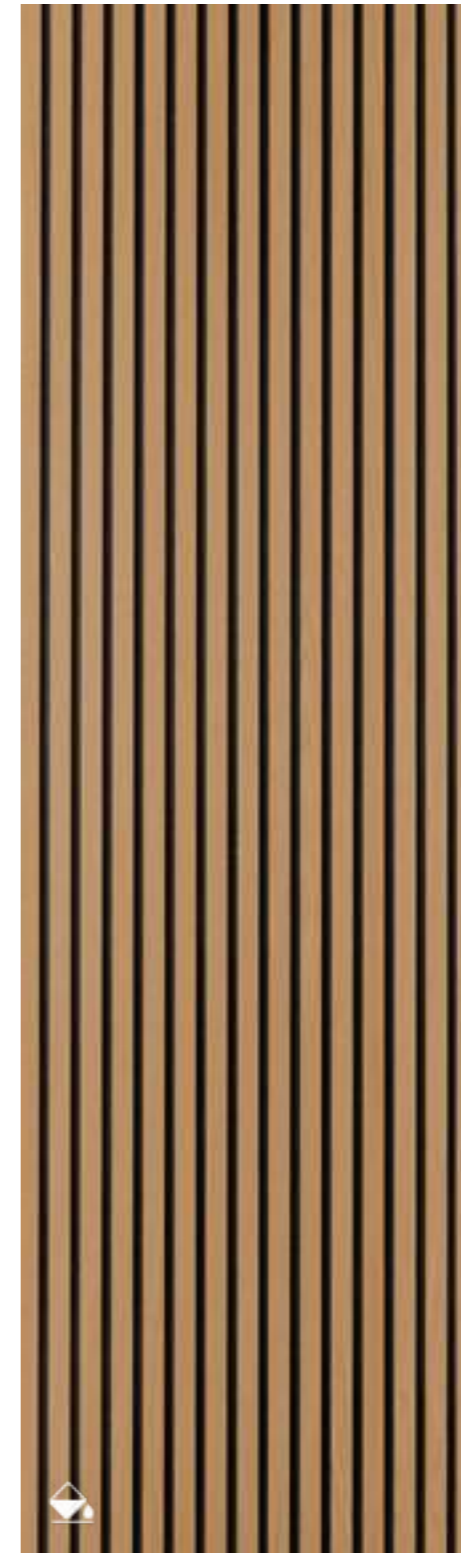


VidaPlank Mudbrick Lusso Wide

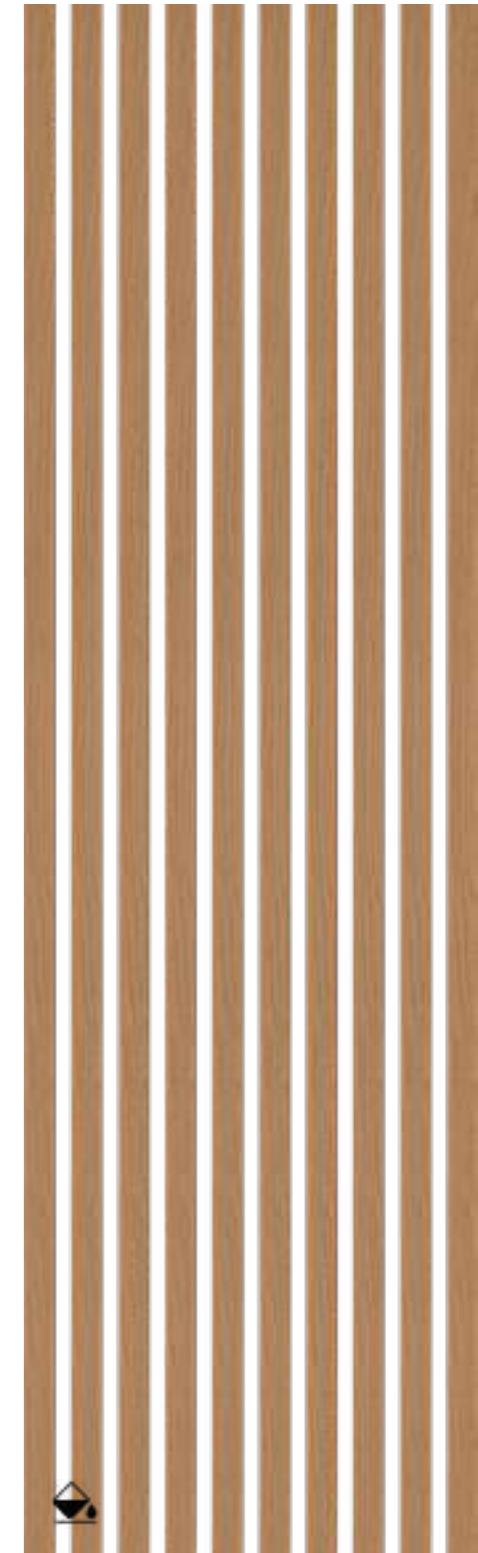
VS6703-LW | 242 x 15 x 2350mm



Mudbrick Stain + Querkus Panel



Mudbrick Stain + VidaGroove Slat Panel



Mudbrick Stain + Querkus Slats



Dawn

A serene colour capturing the delicate moments when the first light of day gently breaks through the horizon. It holds within its palette a story of the cycles of nature and the delicate interplay between light and darkness.



VidaPlank Dawn Lusso

VS6704-LU | 192 x 15 x 2350mm



VidaPlank Dawn Parquet

VS6704-PA | 600 x 120 x 15mm



VidaPlank Dawn Fresco

VS6704-FR | 152 x 15 x 2350mm

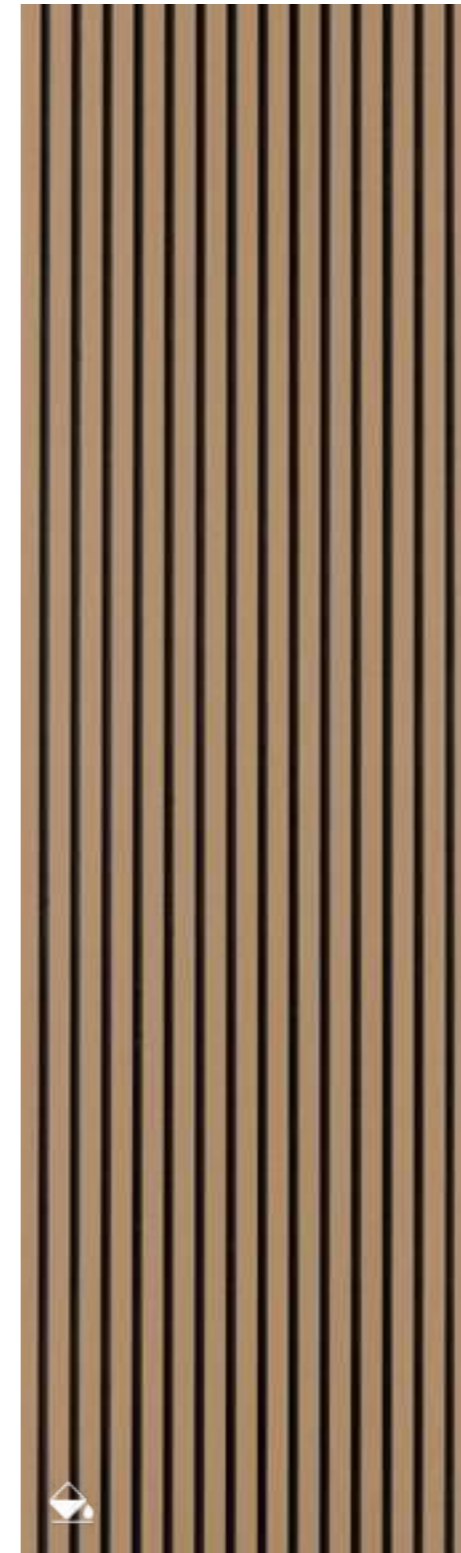


VidaPlank Dawn Lusso Wide

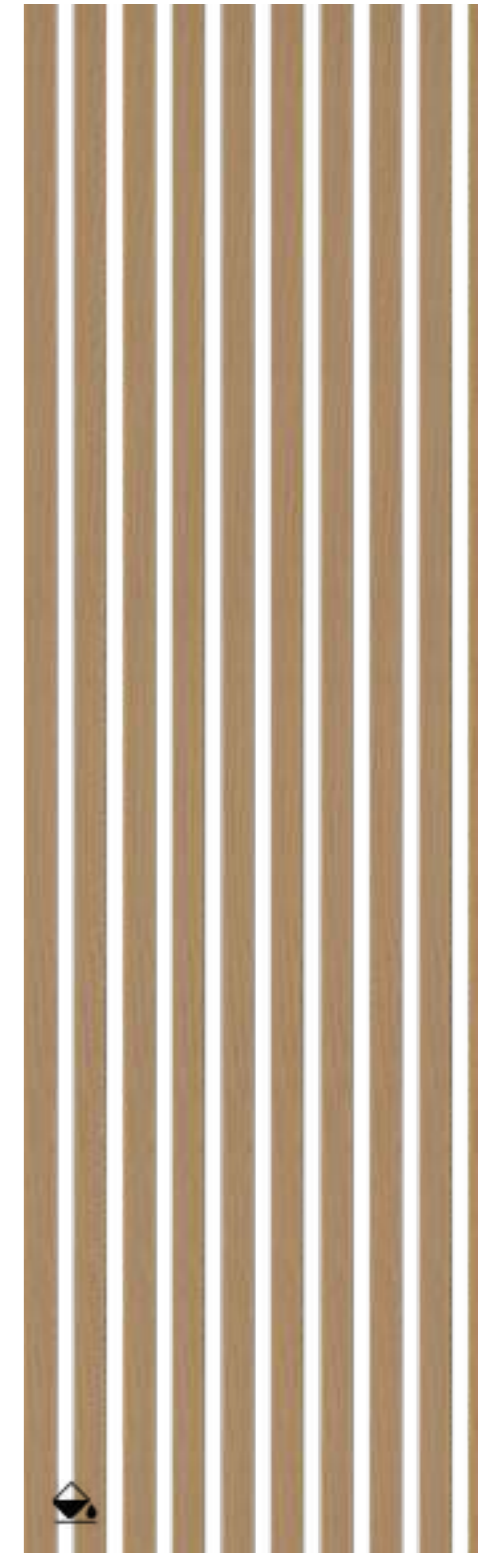
VS6704-LW | 242 x 15 x 2350mm



Dawn Stain + Querkus Panel



Dawn Stain + VidaGroove Slat Panel



Dawn Stain + Querkus Slats



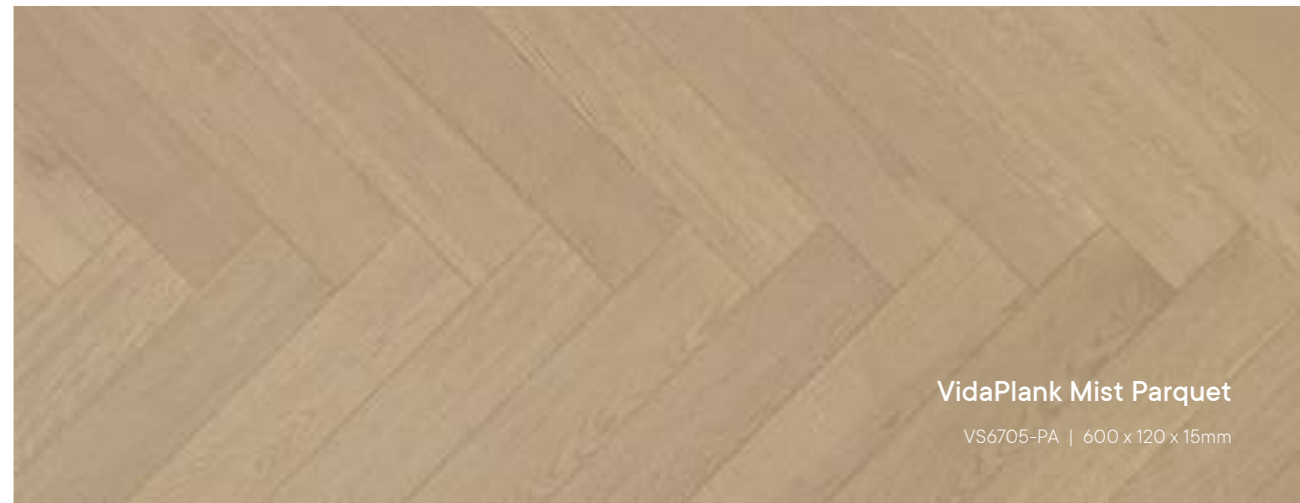
Mist

A subtle interplay of soft greys and delicate whites, reminiscent of the gentle veil that shrouds forests and mountains in a dreamlike embrace. Evoking a sense of mystery and calm, akin to the moment when reality softens and edges blur.



VidaPlank Mist Lusso

VS6705-LU | 192 x 15 x 2350mm



VidaPlank Mist Parquet

VS6705-PA | 600 x 120 x 15mm

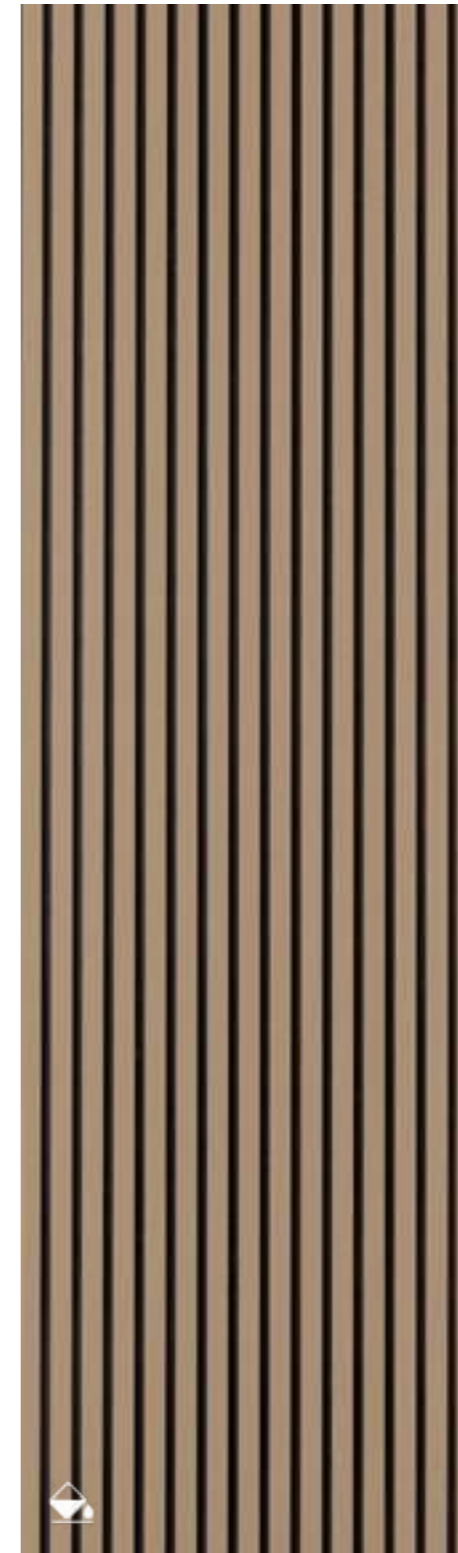


VidaPlank Mist Fresco

VS6705-FR | 152 x 15 x 2350mm



Mist Stain + Querkus Panel



Mist Stain + VidaGroove Slat Panel



Mist Stain + Querkus Slats

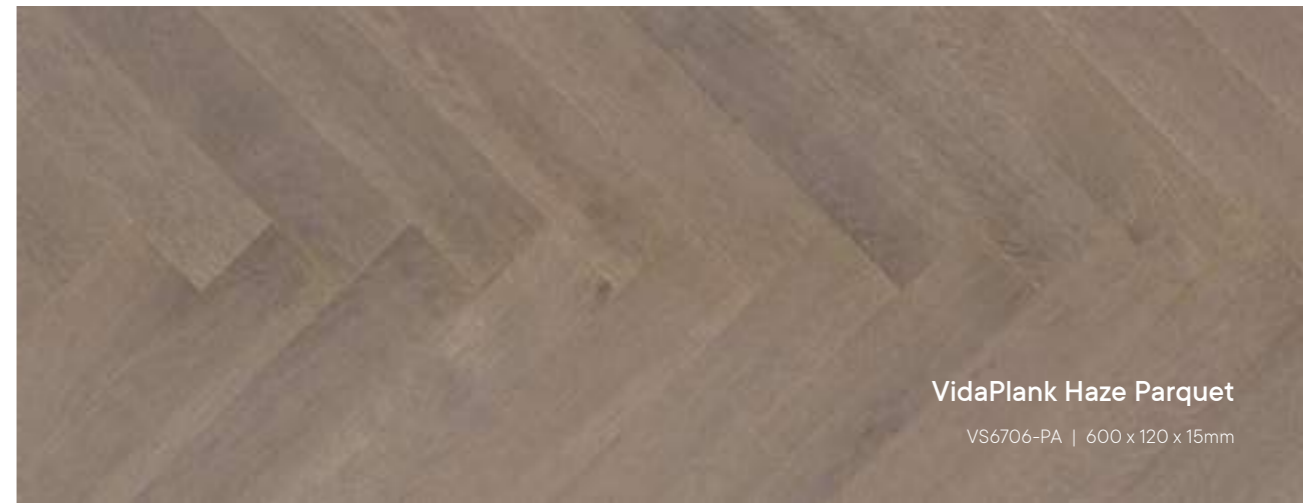
Haze

A complex blend of warm greys with muted undertones, capturing the fleeting beauty of fog as it delicately graces the landscape. This captivating hue embodies the softness and tranquillity of the early morning hours, when the world is enveloped in a gentle, ethereal light.



VidaPlank Haze Lusso

VS6706-LU | 192 x 15 x 2350mm



VidaPlank Haze Parquet

VS6706-PA | 600 x 120 x 15mm



VidaPlank Haze Fresco

VS6706-FR | 152 x 15 x 2350mm



Haze Stain + Querkus Panel



Haze Stain + VidaGroove Slat Panel



Haze Stain + Querkus Slats



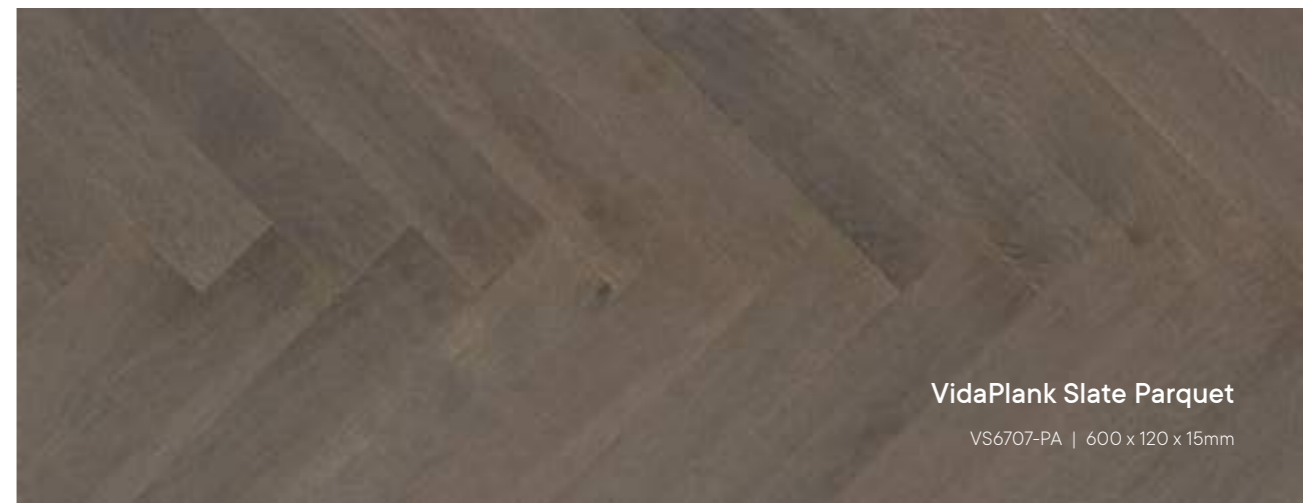
Slate

Embodying the essence of raw elegance and understated sophistication, mirroring the texture and depth found in layers of rock. A deep grey reminiscent of the tranquil serenity found in mountains, with the timeless allure of weathered stone.



VidaPlank Slate Lusso

VS6707-LU | 192 x 15 x 2350mm



VidaPlank Slate Parquet

VS6707-PA | 600 x 120 x 15mm



VidaPlank Slate Fresco

VS6707-FR | 152 x 15 x 2350mm



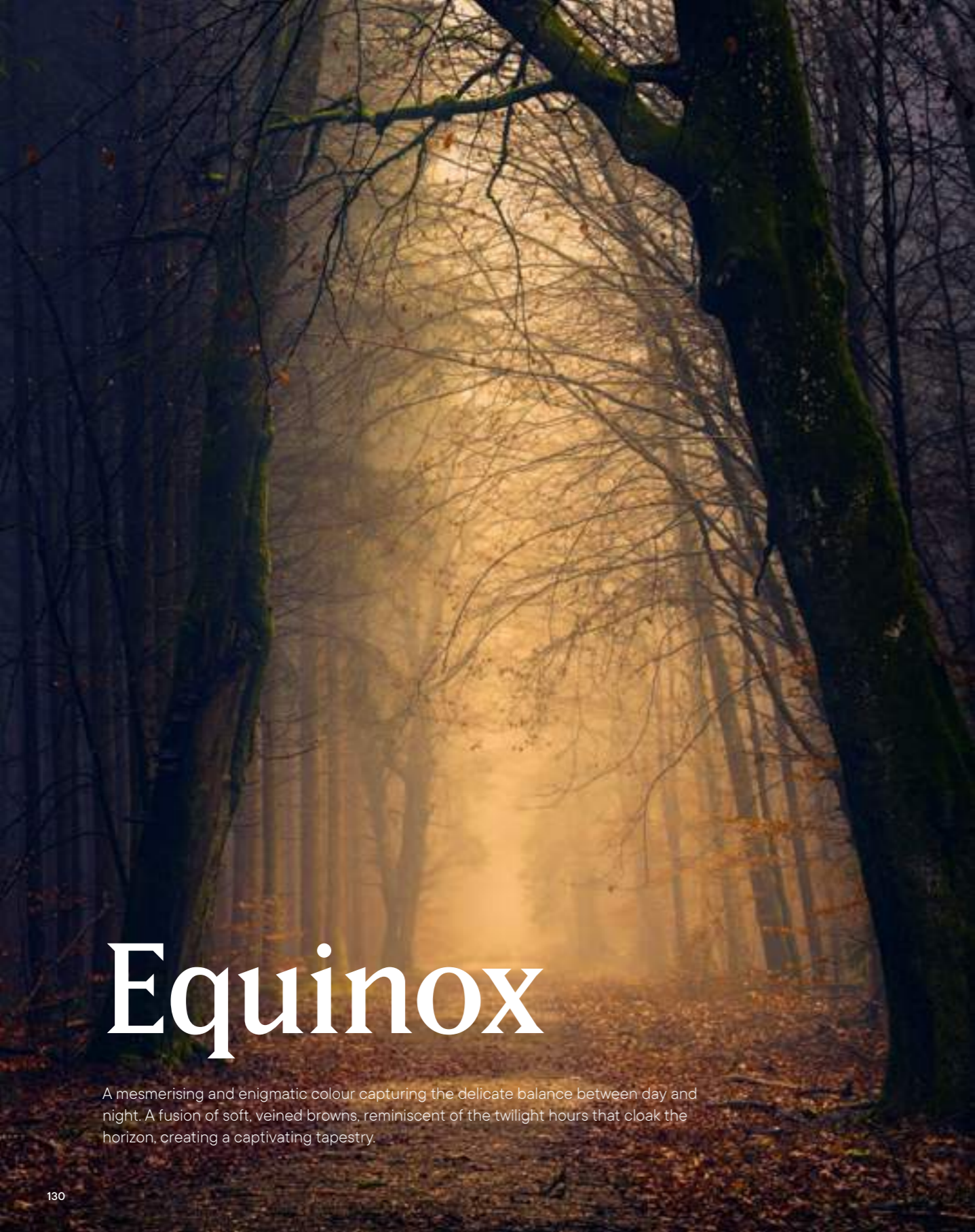
Slate Stain + Querkus Panel



Slate Stain + VidaGroove Slat Panel



Slate Stain + Querkus Slats



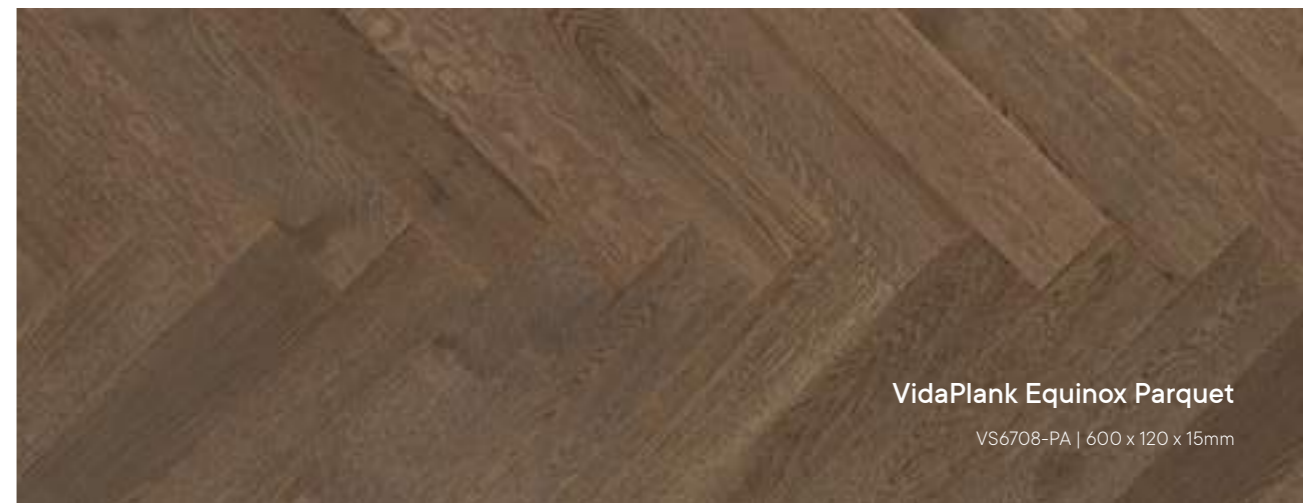
Equinox

A mesmerising and enigmatic colour capturing the delicate balance between day and night. A fusion of soft, veined browns, reminiscent of the twilight hours that cloak the horizon, creating a captivating tapestry.



VidaPlank Equinox Lusso

VS6708-LU | 192 x 15 x 2350mm



VidaPlank Equinox Parquet

VS6708-PA | 600 x 120 x 15mm



VidaPlank Equinox Fresco

VS6708-FR | 152 x 15 x 2350mm



Equinox Stain + Querkus Panel



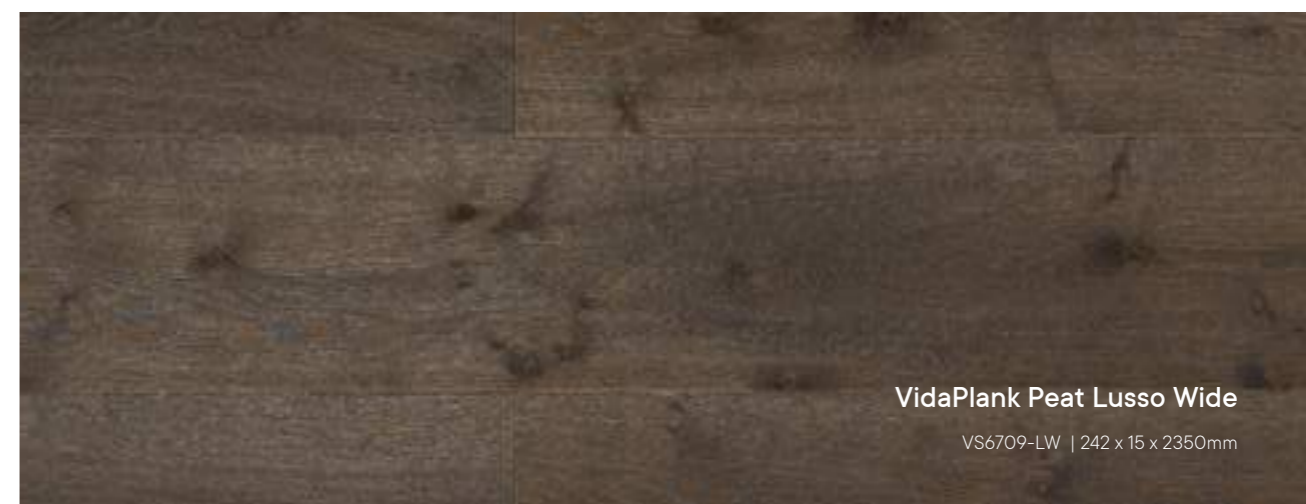
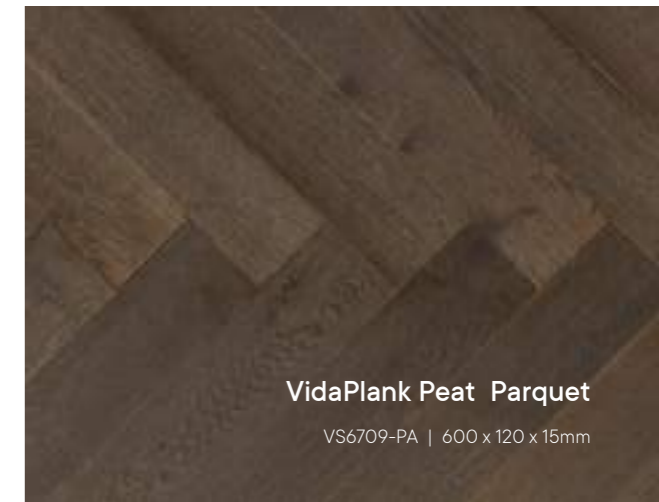
Equinox Stain + VidaGroove Slat Panel



Equinox Stain + Querkus Slats

Peat

A colour inspired by the earth's natural palette, capturing the essence of ancient landscapes and untamed wilderness. With its appearance akin to the velvety richness of soil, it embodies the rich, organic tones evoking a sense of groundedness and connection to nature.





Peat Stain + Querkus Panel



Peat Stain + VidaGroove Slat Panel



Peat Stain + Querkus Slats

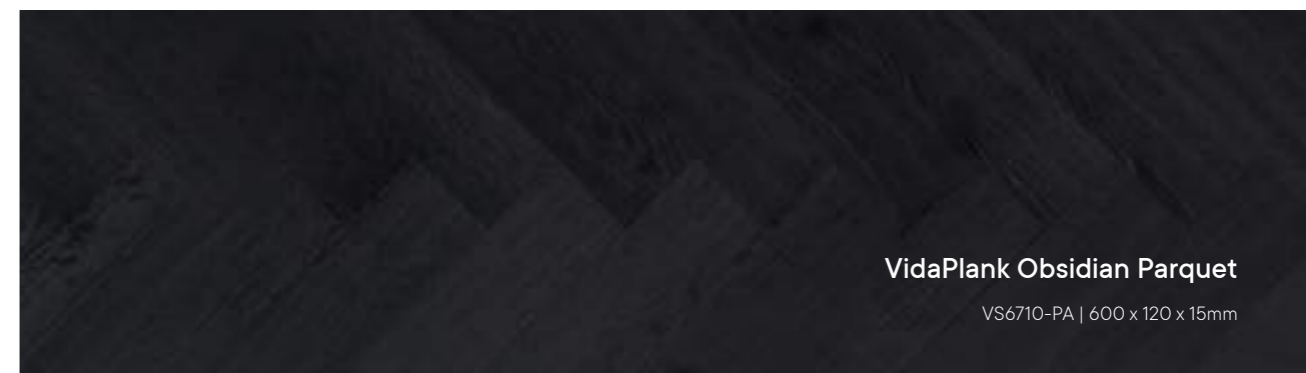
Obsidian

Like the volcanic glass it takes its name from, obsidian is a deep, velvety hue that exudes an air of profound darkness and depth. Its black base is infused with hints of rich, lustrous undertones, reminiscent of the gleam that light catches as it dances upon the surface.



VidaPlank Obsidian Lusso

VS6710-LU | 192 x 15 x 2350mm



VidaPlank Obsidian Parquet

VS6710-PA | 600 x 120 x 15mm



VidaPlank Obsidian Fresco

VS6710-FR | 152 x 15 x 2350mm



VidaPlank Obsidian Rustico

VS6710-RU | 192 x 15 x 2350mm



Obsidian Stain + Querkus Panel



Obsidian Stain + VidaGroove Slat Panel



Obsidian Stain + Querkus Slats



— The Classics

PurePlank

Made in Poland

These FSC® certified oak planks, sourced from a prestigious European mill, boast a durable matte lacquer finish. With unmatched quality control and a focus on sustainability, PurePlank is your top choice for commercial projects.





Maison

HW2503 | 180 x 14 x 2200mm



Champagne

HW2505 | 180 x 14 x 2200mm



Blaine

HW2158 | 180 x 14 x 2200mm



Dunbar

HW14116 | 180 x 14 x 2200mm



Stanwell

HW14108 | 180 x 14 x 2200mm



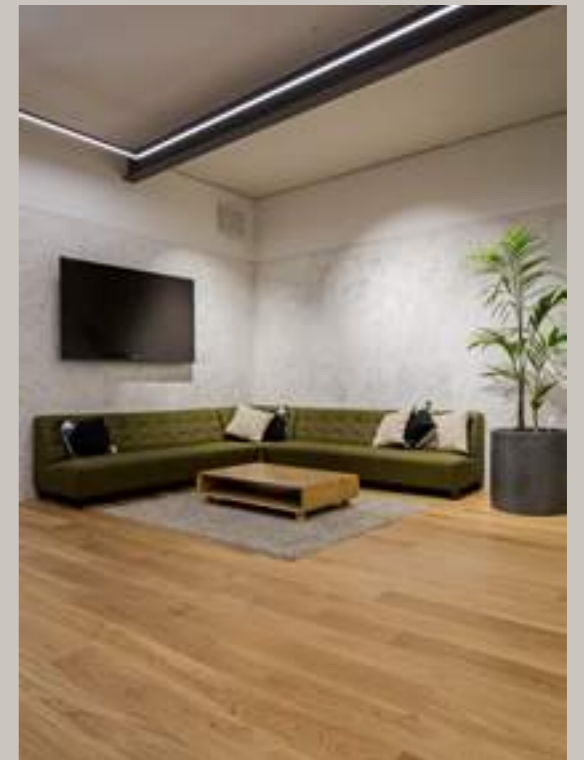
Somersby

HW14118 | 180 x 14 x 2200mm



LPF Offices

Godward Designspace



Parky

Made in Belgium

Reimagining what is possible for wood flooring, Parky has revolutionised the industry with the most waterproof, durable, impact-resistant wood flooring on the market. What's more, it is our most accessible range whilst yielding exceptional sustainability standards.





Milk Oak

VS2701 | 190 x 7.2 x 1203mm



Natural Oak

VS2704 | 190 x 7.2 x 1203mm



Ivory Oak

VS2702 | 190 x 7.2 x 1203mm



Dune Oak Wide

VS2706 | 233 x 10 x 2050mm



Essence Oak Wide

VS2703 | 233 x 10 x 2050mm



Valley Oak Wide

VS2707 | 233 x 10 x 2050mm



Frozen Walnut Wide

VS2711 | 233 x 10 x 2050mm



Smoked Walnut

VS2709 | 190 x 7.2 x 1203mm



Mountain Oak

VS2713 | 90 x 7.2 x 1203mm



Desert Oak

VS2705 | 190 x 7.2 x 1203mm





Shinnoki

Made in Belgium

A premium collection of prefinished oak, walnut, and triba wood veneer panels, Shinnoki is perfect for designers and fabricators to easily create refined and exquisite interiors.

Shinnoki Applications

Curves

Elevate your design and add curved detail and elements using Shinnoki Flex sheets. These prefinished, flexible 1mm thick sheets open up a world of innovative fluidity.



Slats

Shinnoki Slats offer the freedom to explore countless design possibilities. Maximise your creative potential by utilising matching prefinished slats for feature walls and ceilings, islands, counter fronts, moulding and border detailing, space dividers, and more.



Walls & Ceiling

Shinnoki panels make for perfect wall and ceiling linings, in conjunction with our EcoSystem panel clip systems. Whether you're transforming a residential or commercial space, the seamlessness and exceptional durability of Shinnoki panels ensures a flawless installation that stands the test of time.



Kitchens

Shinnoki offers a sophisticated and functional solution for enhancing kitchen aesthetics and functionality. When it comes to kitchens, the choice of materials is crucial, as this space is not only a culinary hub but also a central gathering point in many homes. Scratch and fingerprint resistant, Shinnoki's versatility even extends to seamlessly incorporating integrated appliances, allowing for a sleek and cohesive kitchen design.



Joinery

From floating open shelving, curved surfaces, custom furniture, to sharknose edged cabinet doors and drawer fronts, Shinnoki offers the flexibility and options needed to bring your joinery designs to life with style and precision. With matching edging up to 48mm wide in both ABS and timber formats, Shinnoki empowers you to execute your joinery designs with meticulous attention to detail.



Doors

Enhance your interior and opt for Shinnoki internal doors, manufactured using Shinnoki Door Skins. Shinnoki door capabilities include commercial fire doors.





Milk Oak

VS7023 | 2790 x 1240 x 19mm - Panel



Ivory Oak

VS7022 | 2790 x 1240 x 19mm - Panel
VS7022-SL | 31 x 31 x 3040mm - Slat







Natural Oak

VS7021 | 2790 x 1240 x 19mm - Panel
VS7021-SL | 31 x 31 x 3040mm - Slat



Sahara Oak

VS7024 | 2790 x 1240 x 19mm - Panel



Desert Oak

VS7025 | 2790 x 1240 x 19mm - Panel
VS7025-SL | 31 x 31 x 3040mm - Slat



Manhattan Oak

VS7026 | 2790 x 1240 x 19mm - Panel
VS7026-SL | 31 x 31 x 3040mm - Slat



Mead Residence

Rowson Kitchens

— The Classics



Waipa Architectural Build

Matt South



Frozen Walnut

VS7027 | 2790 x 1240 x 19mm - Panel



Pure Walnut

VS7029 | 2790 x 1240 x 19mm - Panel
VS7029-SL | 31 x 31 x 3040mm - Slat



Cinnamon Triba

VS7028 | 2790 x 1240 x 19mm - Panel



Stardust Walnut

VS7030 | 2790 x 1240 x 19mm - Panel



Seddon House

RMI Interiors



Rangitahi Bach

Edwards White Architects



Shadow Eucalyptus

VS7031 | 2790 x 1240 x 19mm - Panel



Raven Oak

VS7032 | 2790 x 1240 x 19mm - Panel



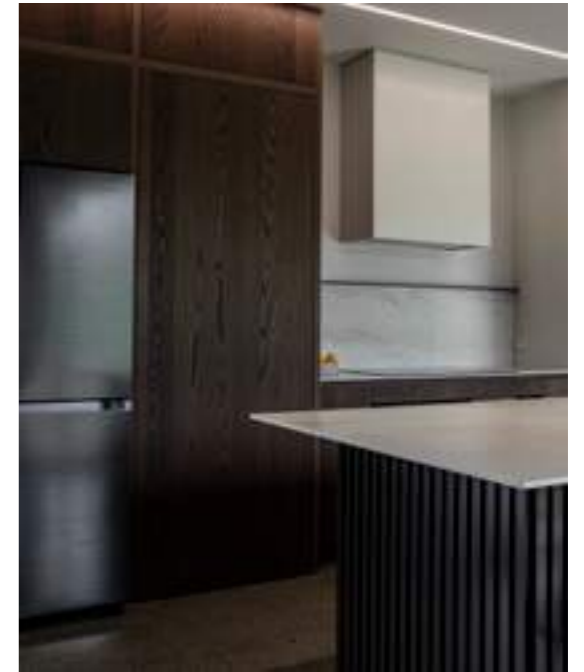
Waipa Architectural Build

Matt South Designer



Gilbert St Home

Rowson Kitchens



The image shows a wall with vertical wood slats. On the left, there is a white curtain. On the right, there is a dark fireplace opening. The text is overlaid on the right side of the wall.

Querkus

Made in Belgium

Querkus is a collection of raw oak veneer panels that offer ultimate freedom in design. Each unique panel tells a story of quality and craftsmanship, offering every interior an individual, distinctive atmosphere.

Querkus Applications

Curves

Querkus Flex sheets can be utilised in your design to achieve curved elements. Whether you wish to achieve soft and gradual arcs, or tighter curves, Querkus Flex offers figurative and literal flexibility.



Slats

Utilise matching Querkus Slats for feature walls and ceilings, islands, counter fronts, moulding and border detailing, space dividers, and more.



Walls & Ceiling

Querkus panels used in conjunction with our EcoSystem panel clip systems make for impeccable wall and ceiling linings. With the ability to stain Querkus any colour you like, seamless design is at your fingertips.



Kitchens

Elevate your kitchen design with the natural beauty and warmth of Querkus veneer. With full customisation possibilities of texture, grade, colour, and sheet sizes, create a truly one-of-a-kind kitchen using Querkus. The allure of nature and the convenience of integrated appliances come together effortlessly.



Joinery

Querkus provides an array of possibilities to bring your joinery designs to life with both style and precision. The versatility and customisation options offered by Querkus, with matching textured edging, empowers you to achieve seamless and refined finishes that truly stand out.



Doors

Heighten the elegance of your interior by choosing custom-made European Oak internal doors, crafted by using Querkus Door Skins. Querkus door capabilities include commercial fire doors.





Natural Adagio Smooth

2440 x 1220 x 19mm - Panel
3050 x 1220 x 19mm - Panel
3050 x 1240 x 0.6mm - Flex



Natural Allegro Smooth

2440 x 1220 x 19mm - Panel 2440 x 1220 x 26mm - Panel
3050 x 1220 x 19mm - Panel 31 x 31 x 3040mm - Slat
3050 x 1220 x 13mm - Panel



Natural Allegro Brushed

2440 x 1220 x 19mm - Panel
3050 x 1220 x 19mm - Panel
2440 x 1220 x 26mm - Panel



Natural Allegro Sawn

2440 x 1220 x 19mm - Panel
3050 x 1220 x 19mm - Panel





Messenger Terrace

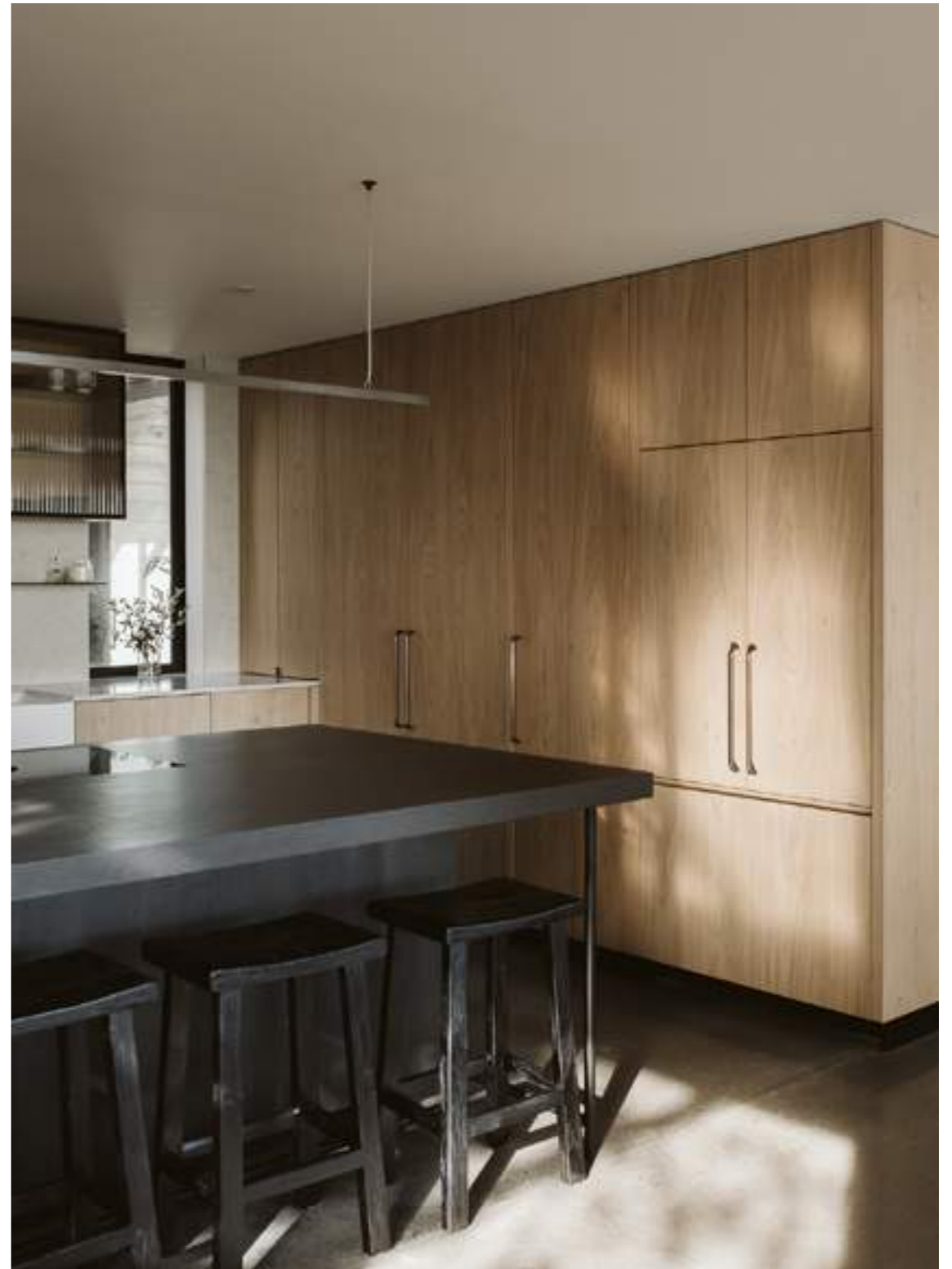
Glen Johns Designs



Waiheke Island Residence

Carlille Kitchens







Smoked Arabica Brushed

3050 x 1220 x 19mm - Panel



Smoked Robusta Brushed

3050 x 1220 x 19mm - Panel





Waiheke Island ————— Carlielle Kitchens



Waimana Residence ————— Shelley Ferguson



Birch Park ————— Bespoke Interior Design



Upper Watt Residence ————— Seear-Budd Ross



VidaGroove Slats

Made in Denmark

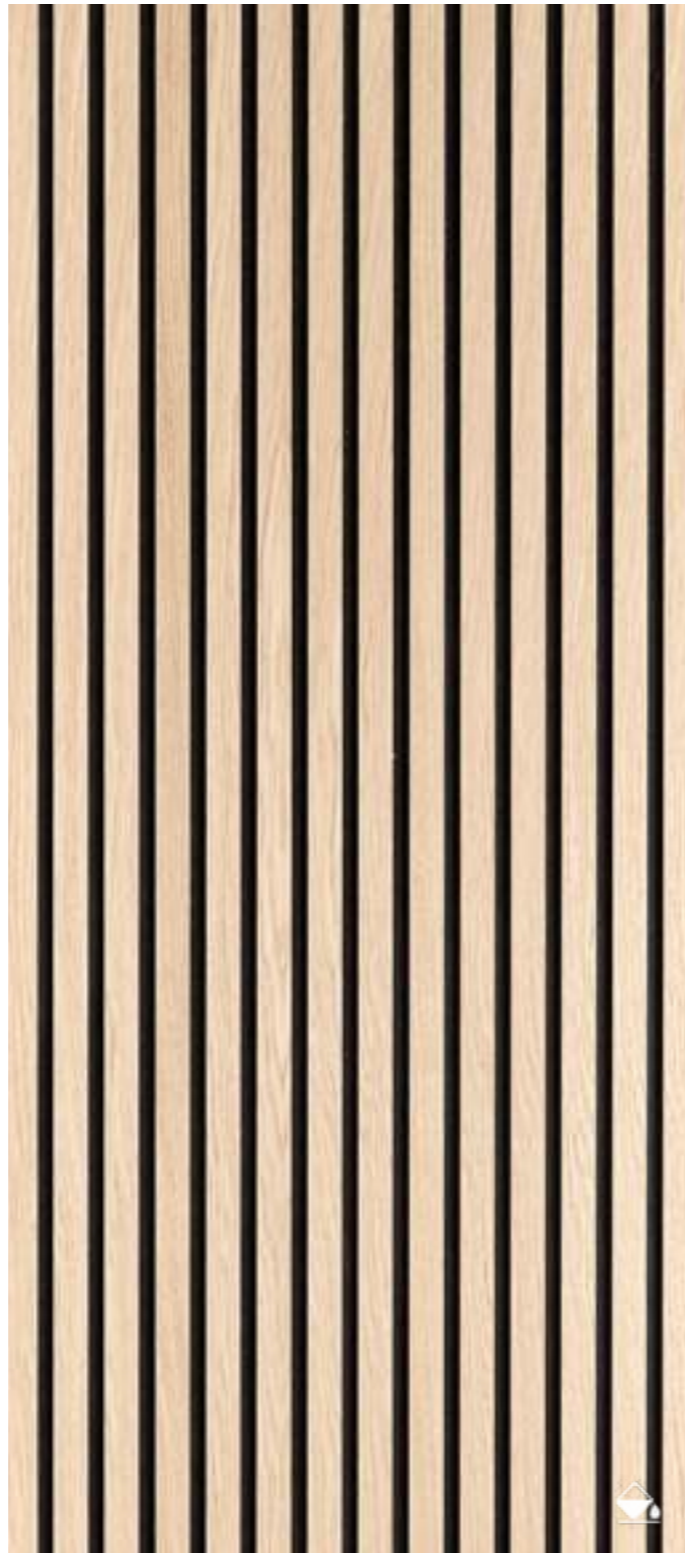
An iconic trend in architectural design, VidaGroove Slats are prefabricated battened panels made from walnut, oak, and ash on acoustic recycled felt. Offering striking results on vertical, horizontal, and curved surfaces.





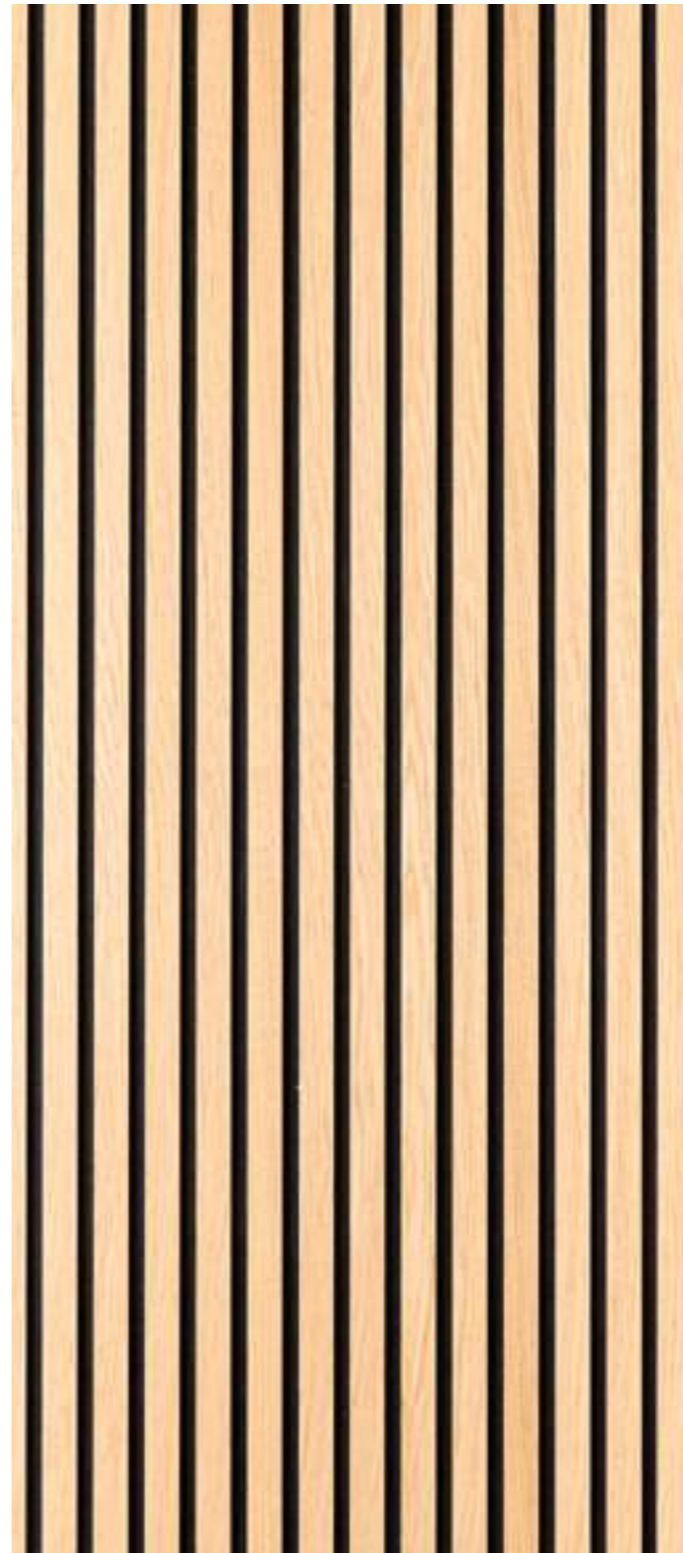
Grey Oak

VS7956 | 3000 x 600 x 20mm



Unfinished Oak

VS7950 | 3000 x 600 x 20mm



Black Oak

VS7957 | 3000 x 600 x 20mm





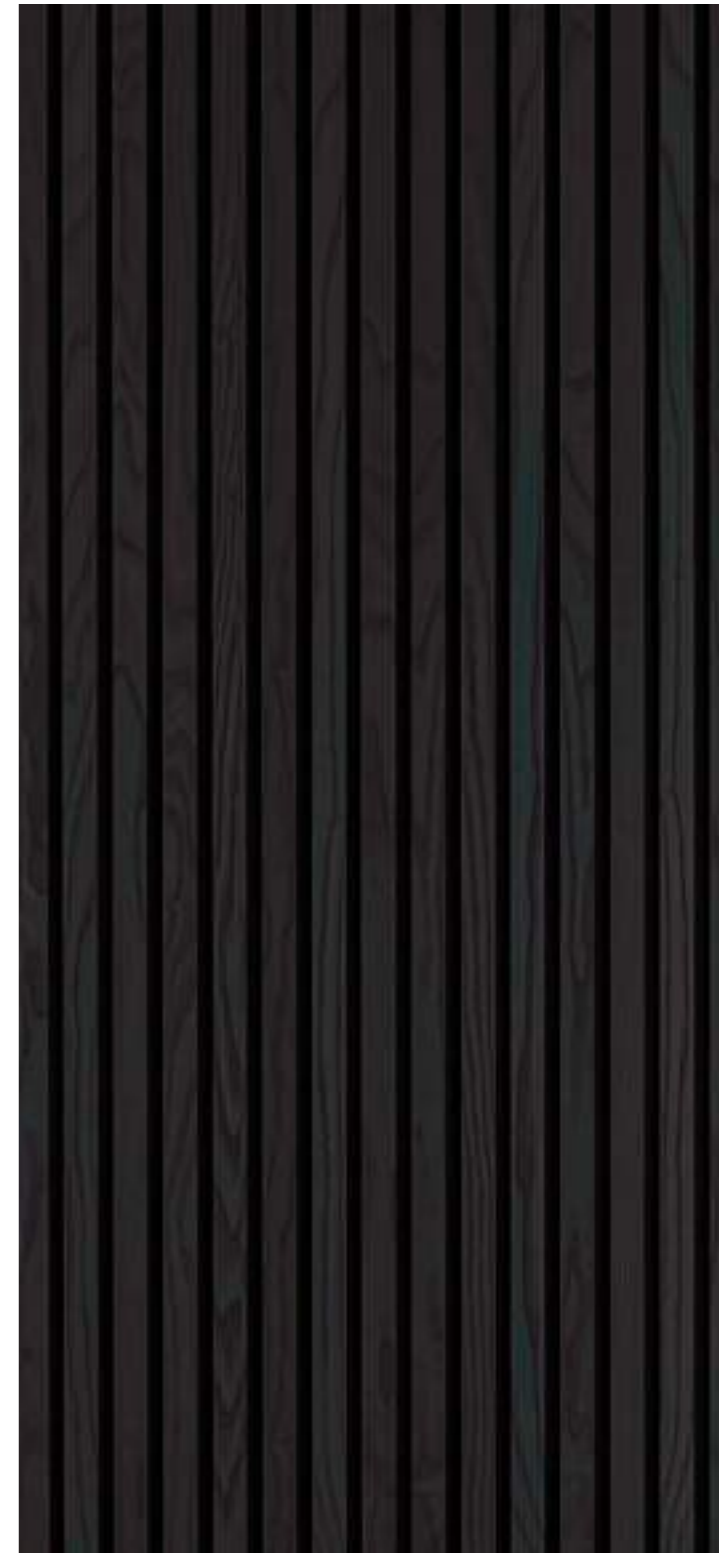
Black Walnut

VS7953 | 3000 x 600 x 20mm



Smoked Oak

VS7954 | 3000 x 600 x 20mm



Black Ash

VS7955 | 3000 x 600 x 20mm

VidaGroove Reclaimed

Made in North America

A collection of genuinely recycled timbers sourced from the Great Lakes region in North America. Salvaged from old barns and sheds, VidaGroove Reclaimed is as authentic as it gets.





Outpost
VS1018



Tempest
VS1016



Harken
VS1010



Private Residence

Hulena Architects



Amano Restaurant

Jack McKinney Architects



— Sample Service



— Samples + Sample Kits

We offer a seamless sample service including hand samples and a comprehensive library support system for industry professionals. Order directly from our website.



— Veneer Fan Decks

Large Swatches of our Prefinished & Unfinished Veneers. Order directly from our website.





vidaspace