

WEBB AUSTRALIA GROUP COMPANY PROFILE



WEBB AUSTRALIA GROUP (QLD) PTY LTD
SUITE 3, LEVEL 1, 29 WOODSTOCK ROAD
TOOWONG QLD 4066

WEBB AUSTRALIA GOLD COAST PTY LTD
UNIT 14, 79 WEST BURLEIGH ROAD
BURLEIGH HEADS QLD 4220



WEBB AUSTRALIA SUNSHINE COAST PTY LTD
CAPITAL ONE COMPLEX, SUITE 13A, 9 CAPITAL PLACE
BIRTINYA QLD 4575

ELECTRICAL • MECHANICAL • COMMUNICATIONS • SECURITY • SPECIALISED LIGHTING • FIRE DETECTION

Company Profile

Webb Australia Group was established in 1973. Our Company of over 70 staff specialises in Electrical Engineering, Specialist Lighting, Security, Mechanical, Communications, Audio Visual and Technology Consultancy, and we have established offices in New South Wales, Victoria, Queensland, ACT in Australia, New Zealand and the United Arab Emirates.

Webb Australia Group (QLD) was established in 1987 and currently has thirty one (31) staff with offices in Brisbane, the Gold Coast and Sunshine Coast. The Queensland operations are led by Director Mark Wilton and Associates Alastair Carr, Craig Collins, James Walden, Prasanna Pathirana and Robert Smith.

Our project experience is diverse and ranges from small scale projects such as interior refurbishments and residential developments to large scale projects such as design of security systems for government institutions, advanced technology and high reliability data centres for financial institutions, shopping centre and lighting masterplanning for urban design.

Our Company prides itself on the ability to deliver innovative design solutions utilising the latest and most advanced technology. We are committed to being at the forefront of electrical knowledge and expertise, and to the commitment of high standards of creativity and reliability within the electrical engineering discipline.

Webb Australia Group (QLD) Pty Ltd has been recognised as “Industry Best Practice” and has a PQC rating of Level 3.

Webb Australia Group services are delivered under the auspices of a Quality Assurance System that is accredited and certified to ISO 9001 Standards.

Company Structure

| | | | |
|-------------------------|---|---|---|
| Established 1973 | Website www.webbaustralia.com.au | | Number of Employees Seventy Five (75) |
| Directors | <u>NSW</u> Marc Pirozzi Ian Foy | <u>QLD</u> Mark Wilton | <u>VIC</u> Garry Lowe |
| Associates | <u>NSW</u> Ken Douglas Simon Chiu Steven Lam | <u>QLD</u> Craig Collins Prasanna Pathirana Alastair Carr James Walden Robert Smith | <u>VIC</u> Robert Hamilton Bill Harding Kurt Wilton |

Office Locations**WEBB Australia Group (QLD) Pty Ltd****Brisbane**

ABN 30 010 733 561
Suite 3, Level 1, 29 Woodstock Road (PO Box 1005)
TOOWONG QLD 4066
T +61 7 3870 4900
brisbane@webbaustralia.com.au

Gold Coast

Unit 14, 79 West Burleigh Road
BURLEIGH HEADS QLD 4226
T +61 7 5575 8877
goldcoast@webbaustralia.com.au

Sunshine Coast

Capital One Complex, Suite 13A, 9 Capital Place
BIRTINYA (KAWANA) QLD 4575
T +61 7 5438 8800
sunshinecoast@webbaustralia.com.au

WEBB Australia Group (NSW) Pty Ltd**Sydney**

ABN 48 050 056 712
Level 4, 828 Pacific Hwy
GORDON NSW 2072
T +61 2 9418 1444 F +61 2 9418 1191
sydney@webbaustralia.com.au

Newcastle

Level 2, 17 Bolton Street
NEWCASTLE NSW 2300
T +61 2 4929 5225
newcastle@webbaustralia.com.au

WEBB Australia Group (ACT) Pty Ltd

ABN 14 064 354 776
4b, 20 Napier Close
DEAKIN ACT 2600
T +61 2 6285 4365 F + 61 2 6285 4253
canberra@webbaustralia.com.au

WEBB Australia Group (VIC) Pty Ltd

ABN 61 073 585 305
Level 9, 128 Exhibition Street
MELBOURNE VIC 3000
T +61 3 9652 0333 F +61 3 9652 0300
melbourne@webbaustralia.com.au

QATAR

ABN 48 050 056 712
P.O. BOX 11168
DOHA, QATAR
ifoy@webberbas.com

WEBB New Zealand Group

NZBN 9429050708826
P.O. BOX 81
KINGSTON, NZ 9748
admin@webbnz.co.nz

Services

| Electrical Engineering | Communications | Security |
|---|--|--|
| <ul style="list-style-type: none"> General Electrical Services Electrical Reticulation Fire Detection Systems Warning & Evacuation Systems Lightning Protection Diesel Generators Photovoltaic Systems High Reliability Installations High Voltage Power Systems (HV) Uninterruptible Power Systems (UPS) | <ul style="list-style-type: none"> Data Network Design Optical Fibre Networks Structured Cabling Systems Communications Infrastructure Defence Networks Design MATV Audio Visual Systems Public Address Systems Intercommunications | <ul style="list-style-type: none"> SCEC Approved Security Zone Consultants Integrated Electronic Security Systems Type 1 Alarm Systems Electronic Access Control (EACS) CCTV IP Systems Intercommunications Network Centric Security Systems Duress Alarms Biometric Systems Contraband Detection Systems Secure Entrance Perimeter Detection Systems |
| Specialised Lighting | Mechanical | |
| <ul style="list-style-type: none"> Masterplanning for Urban Design Industrial, Manufacturing, Warehouse & Office Lighting Architectural Lighting Public Spaces, Parks & Monuments Lighting Landscaping Lighting Facade Lighting Internal Spaces Sports Lighting Airfield Lighting | <ul style="list-style-type: none"> Air Conditioning Mechanical Ventilation Piped Gas Services Refrigeration Building Management Systems Vertical Transportation | |

Capability & Capacity

Project Director Mark Wilton and his staff have considerable experience with all forms of procurement strategies and have completed many major projects with leading builders and construction managers throughout Australia and overseas.

The key members of the Design Team have extensive experience within the industry in the fields of Electrical, Communications, Security, Mechanical and Lighting Services design and implementation. The expertise includes understanding the functional requirements of the facilities as well as the technical standards.

Mr Mark Wilton, Mr Larry Tuohy, Mr Craig Littleton, Mr Reece Carey, Mr Robert Smith, Mr James Walden, Mr Prasanna Pathirana and Mr Alastair Carr are Registered Professional Engineers in Queensland.

Environmental Sustainable Design

Webb's expertise in Environmentally Sustainable Design goes beyond BCA / NCC Section J Compliance designs.

Webb delivers solutions which not only incorporate leading edge energy efficiency through the use of high performance luminaries, lamps, and control systems but also consider material selection criteria such as low PVC and VOC and waste management.

Further, Webb Australia can provide expertise in alternative energy sources such as photovoltaic cells, fuel cells, wind generation and cogeneration.

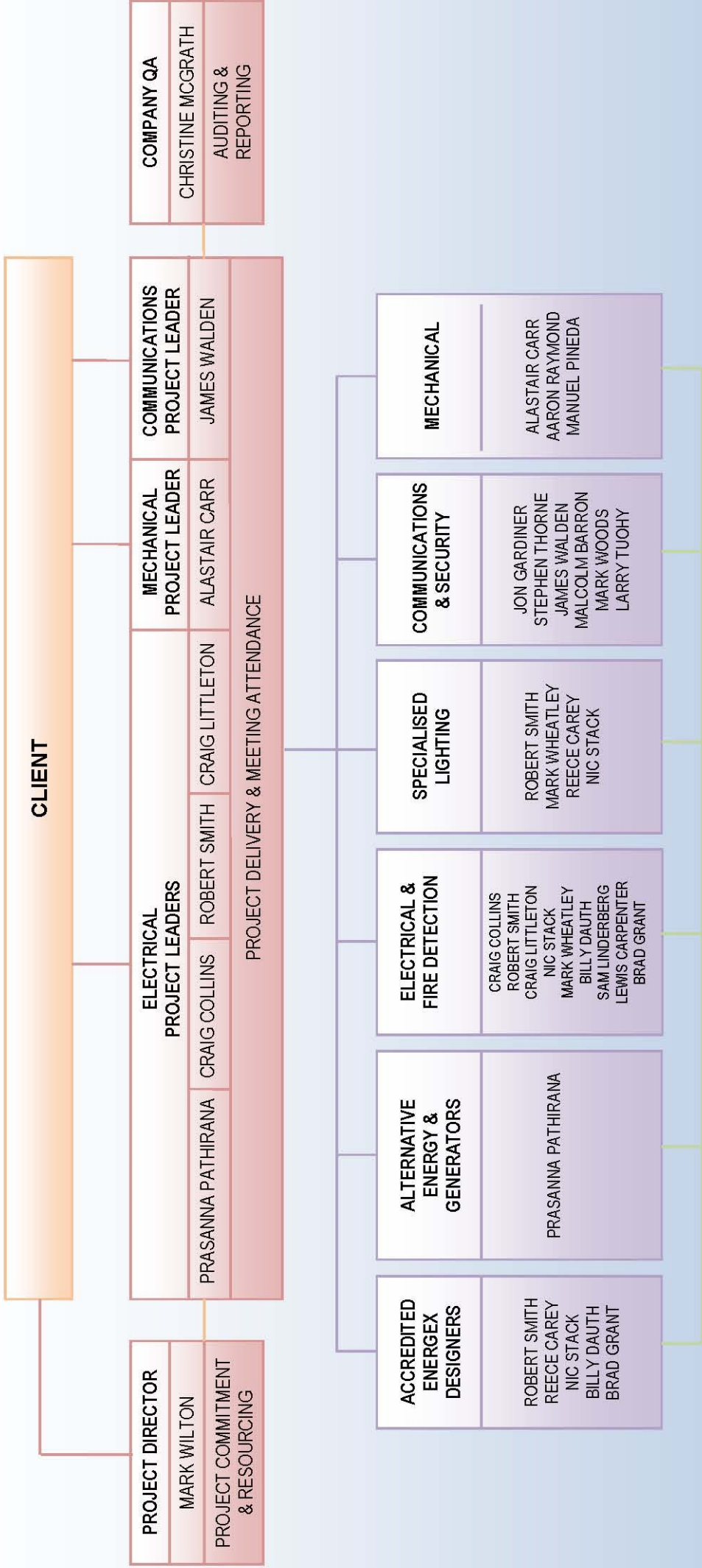
Environmental Plan

Webb is committed to the achievement of world's best practice in the delivery of Engineering Consultancy Services and shall at all times have regard to the need to protect the natural environment and cultural heritage.

Webb will seek to minimise any detrimental impact upon the environment. In particular we will, as far as practicable:

- Protect flora and fauna especially endangered species.
- Minimise, and eliminate where possible, visual, noise and chemical pollution.
- Efficiently utilise existing plant and equipment where possible.
- Protect public safety.
- Comply with the requirements imposed by the applicable environmental, cultural and heritage legislation of the Commonwealth, States and Territories.
- Consult openly with relevant governments and authorities, local communities and the general public on environmental issues.
- Be responsive to constructive inputs from affected and interested parties in relation to any proposal likely to raise environmental concerns.
- Monitor international developments and assess new technology directed at minimising environmental impact.
- Educate, train and motivate employees about the environment, Webb's Environment Plan and other relevant State and Territory legislation.
- Ensure that places and sites of heritage value, and particularly those entered in the Register of the National Estate, on State/Territory Heritage listings, and sites of Aboriginal significance are not endangered by Webb's activities.

TEAM STRUCTURE DIAGRAM OUTLINING ROLES & RESPONSIBILITIES



CAD/BIM MANAGER

MARK WHEATLEY / GRACE NAM / LEWIS CARPENTER / LIAM SHANNON / SAM LINDERBERG / VICTOR DIOLA / BILLY DAUTH / TOM MOREY

DRAWING PRODUCTION

SPORTS FIELD LIGHTING

QUEENSLAND

- Coolum Ridge Sports Field Lighting
- Cotton Tree Rugby Union Sports Field Lighting
- Firth Park Baseball & Football Lighting
- Girraween Sports Complex
- KR Benson Park Netball Facilities, Clontarf
- Landsborough Sports Complex
- Lavarack Barracks Townsville Gymnasium & Sports Facility
- Maine Terrace Sports Field
- Meridan Fields Sports Field
- O'Callaghan Park Community & Sports Club, Zillmere
- Queensland State Hockey Centre
- Ray Frawley Sports Field
- Redcliffe Leagues Club Sports Field Lighting
- Sir Bruce Small Park Flood Lighting Upgrade
- Skippy Park Sports Field
- South Pine Sports Complex
- Witta Sports Field Lighting

ACT

- Bruce Stadium Redevelopment, Canberra

NEW SOUTH WALES

- Aussie Football Stadium
- Cook & Phillip Park Aquatic & Leisure Centre
- Duntroon Military College
 - Lighting of five (5) Recreational Ovals (All Sports)
- Moore Park Tennis Courts
- Kellyville Netball Courts
- King George V Recreation Centre, The Rocks
- Lane Cove Aquatic Centre
- OKI Jubilee Oval
- Olympic Park Golf Range
- Olympic Park Rugby Lighting
- State Sports Centre, Homebush Bay
- Sydney Cricket Ground
- Sydney Indoor Sports Centre, Homebush
- Sydney International Athletic Centre
 - Event Track & Warm-up Track
- Sydney International Aquatic Centre
- Sydney International Equestrian Centre, Horsley Park
- University of New South Wales Hockey Field, Little Bay
- University of Sydney, Field 2
- Warringah Aquatic Centre

VICTORIA

- Albert Park Golf Range
- Albert Reserve Tennis Centre
- Alma Park Soccer Oval
- Balwyn Oval
- Brookside Oval
- Burwood Reserve Football Lighting
- Crawford Oval
- Ferndale Park
- Victoria Reserve Football Oval
- Vodafone Arena - Cycling, Tennis & Netball



Aussie Stadium



Sydney Cricket Ground



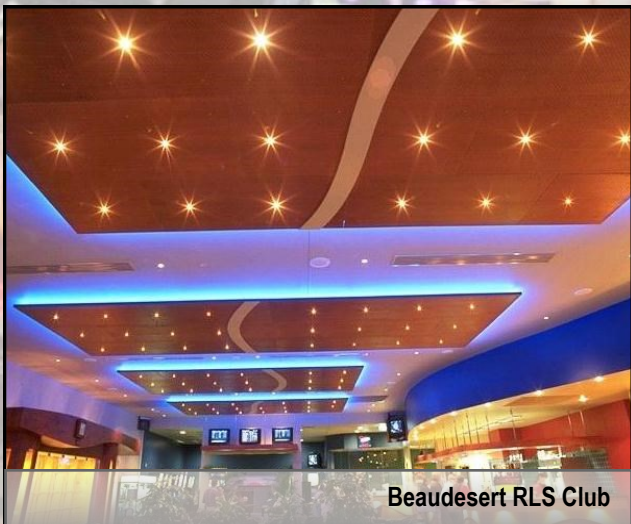
Sydney International Aquatic Centre



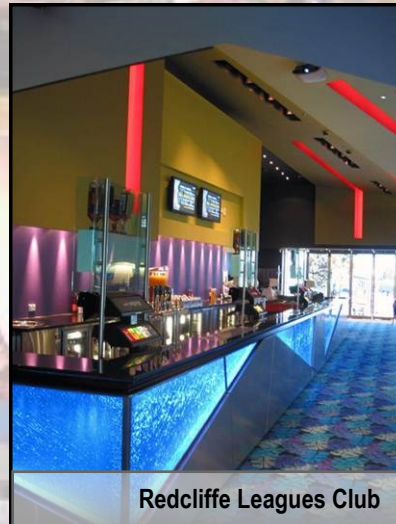
OKI Jubilee Oval

CLUB / HOTELS

- Beaudesert RSL Club
- Caloundra Power Boat Club
- Caloundra North Surf Life Saving Club
- Cowra RSL Club
- Fibber Magee Irish Pub, Toowoomba
- Forbes Services Club
- Gatton RSL
- Horton Park Golf Club
- Ingham Golf Club
- Ingham RSL
- Infinity Gold Coast
- Ipswich Bowls Club
- Kingaroy RSL Club
- Maroochydore RSL Club
- Nerang RSL Club
- Pine Rivers Bowls Club
- Redlands RSL Club
- Redcliffe RLFC
- Singleton Memorial Club
- Spotted Cow, Toowoomba
- Southport Workers Club
- Surfers Paradise RSL
- Toowoomba RSL Club
- Toowoomba City Golf Club
- Tewantin / Noosa Bowls Club
- Townsville Rugby Club
- Tweed Heads Bowling Club
- Wagga RSL Club



Beaudesert RLS Club



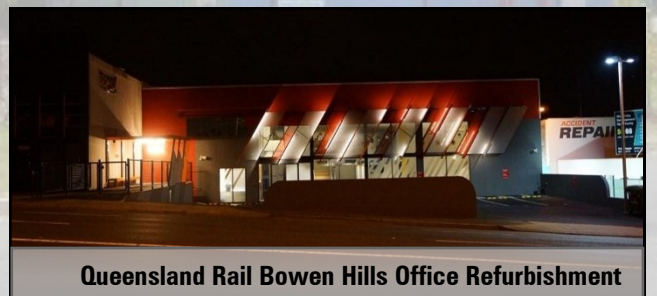
Redcliffe Leagues Club

COMMERCIAL / OFFICE

- One One One Eagle Street, Brisbane
- 21 Orchid Avenue, Surfers Paradise
- 154 Melbourne Street, South Brisbane
- Allied Pickford Warehouse, Richlands
- Bacon Street Commercial Development, Moranbah
- Blue Scope Steel, Mackay
- Brisbane Customs House Accommodation Project
- Department of Fisheries & Forestry, London Court, ACT
- DIBP Facility , Airport Drive, Brisbane
- McCann Erickson, Brisbane
- De Ca Freight Transport Terminal, Mackay
- Department of Emergency Services, Kedron
- Mackay Industrial Development
- McAleese Transport, Mackay
- Old Courthouse, Maroochydore
- Queensland Rail Bowen Hills Office Refurbishment
- Storage King, Kingston
- Sunshine Coast Regional Council Administration Building
- Sunshine Coast Regional Council, Nambour Precinct
- Sunshine Coast Regional Council Office Fit Out



154 Melbourne Street, SOUTH BRISBANE



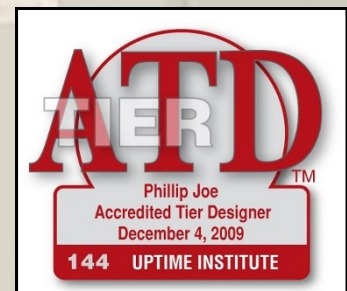
Queensland Rail Bowen Hills Office Refurbishment



ONE ONE ONE Eagle Street

HIGH RELIABILITY / DATA CENTRES

- Air Services Australia Data Centre, Brisbane & Melbourne, Audit Report
- AMP Society, Bondi Junction Computer Centre
- Australis Media
- Cathay Pacific World Data Centre
- Commonwealth Bank, Computer Centre, Burwood
- Commonwealth Bank Data Centre, Norwest (Commissioning only)
- CITEC, Brisbane
- Energex Control Centre, Victoria Park
- Golden Casket Agency, Woolloongabba
- Health Insurance Commission Computer Centre, Tuggeranong
- IBM Australia, National Headquarters & Computer Centre, Forrest Hill
- IBM Data Centre, Baulkham Hills
- Interactive Data Centre, Port Melbourne
- Interactive Data Centre, St Leonards
- International Broadcast Centre, Sydney Olympics 2000
- Polaris Data Centre, Melbourne
- Polaris Data Centre, Springfield
- Powerlink Disaster Recovery Centre, Brendale
- Queensland Universities Data Centres Audit Report
- State Bank Of South Australia Computer Centre
- Super Retail Group Data Centre Audit Report
- Telecom Australia RMC 201 Computer Centre
- Telstra - Civic, Newtown & North Sydney Telephone Exchanges
- TSWG Data Centre, Brisbane
- Westpac Disaster Recovery Computer Centre, Chatswood
- Westpac Place Data Centre, Sydney
- Various Venues associated with Sydney Olympics 2000



Polaris Data Centre, SPRINGFIELD

CORRECTIONAL FACILITIES

- Alexander Maconochie Centre
- Arthur Gorrie Correctional Centre (Expansion)
- Baxter Detention Centre
- Borallon Training and Correctional Centre
- Brisbane Correctional Centre, Wacol
- Brisbane Women's Correctional Centre, Wacol
- Brisbane Youth Detention Centre
- Capricornia Correctional Centre Expansion
- Christmas Island Immigration Reception & Processing Centre
- Clarence Correctional Centre
- Corella Place, Ararat
- Goulburn Correctional Centre
- Hopkins Correctional Centre Upgrade, Ararat
- Hunter Correctional Centre, Cessnock
- Langi Kal Kal Correctional Centre
- Lotus Glen Correction Centre (Expansion)
- Northern Territory Secure Facility, Men's, Women's & Mental Health
- Risdon Prison Men's, Women's & Mental Health Facilities
- Rockhampton Correction Centre (Expansion)
- South East Queensland Correctional Precinct Development, Gatton
- Townsville Men's Correctional Centre
- Townsville Women's Correctional Centre
- Villawood Detention Centre
- Waikeria Prison, New Zealand
- Wolston Correctional Centre, Wacol
- Woodford Correctional Centre



Townsville Women's Correctional Centre



South East Queensland Correctional Precinct Development

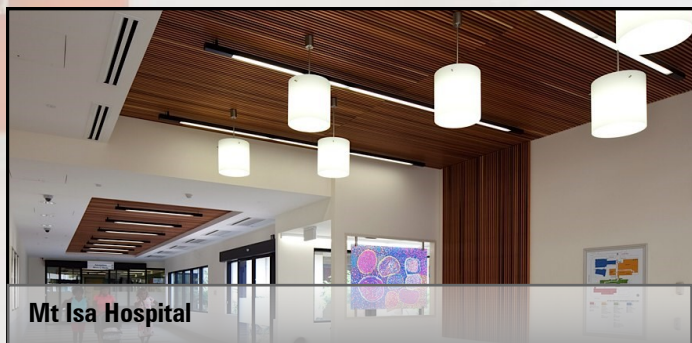
DEFENCE

- BSIP Lead Consultant
- Borneo Barracks Cabarlah
- Defence QLD Armouries
 - Bulimba, Gympie, Loganlea, Mackay, Roma, Southport, St Lucia, Stanthorpe & Warwick
- Defence Scientific Technical Organisation (DSTO), Pullenvale
- Defence Scientific Technical Organisation (DSTO), Fishermans Bend, Melbourne
- Gallipoli Barracks, Enoggera
 - ASIF Facilities, Combined MESS & 7BDE Headquarters (ER1) & Enhanced Land Forces Stage B (ELF2B), F16, F30 Base Security Entry Point, Security Monitoring Station & Stage I Redevelopment
- HMAS Albatross Nowra
 - 2 x Squadron Hangars/Office, Control Tower, Explosive Ordnance, Flight Trainers, New Fire Station, NALMS Building, NASPO Building, Site Infrastructure, Stage I Redevelopment & Training School
- HMAS Cairns Redevelopment
- Headquarters Joint Operations Centre (HQJOC) Canberra
- Holsworthy Army Barracks SOWA
- Kokoda Barracks, Canungra
 - Armoury, Communications Master Plan, Defence Intelligence Training Centre, Stage I Redevelopment & Storage Facilities
- Lavarack Barracks
 - 1RAR, 2RAR, 3CER Precinct, 4FDR Precinct, Administration, Training & Workshop Facilities, Area Gymnasium Indoor Sports Facility, CISCEN Relocation, Enhanced Land Forces (ELF) Stage I 3RAR & Messing, Enhanced Land Forces (ELF) Stage II WONCO Academy, CTC & 3CSSB, Joint Logistics Unit (JLU-NQ), Stage II Redevelopment, Stage III Redevelopment, Stage IV Redevelopment & Regional Aid Posts
- Oakey Army Aviation
 - Growler Facilities, ARH Simulator for Tiger Helicopters, Combined Mess, Emergency Response Station, Hot Refuel Facility, Living In Accommodation, MRH-90 Peer Design Review, Transit Accommodation & Various Office & Working Facilities/Hangars
- RAAF Base, Amberley
 - 6ESR Facilities, 17 & 21st Construction Facility, AP2-24 Facilities, C17 Facilities, Explosive Store Houses, OLA & J Group Facilities, 9FSB Facility, AAR/MRTT Facilities, ASH Facilities, Growler Facilities, Deployable Security System & SRSPo Facilities
- RAAF Base, Tindal
 - OLA & J1 Group Security & Explosive Store House
- RAAF Base, Townsville
 - Base Main Entry & SECPOL, Base Training, CEPS, Combined Mess, Dangerous Goods, Physical Fitness, Liquid Dry Breathable Oxygen, Stage I Redevelopment (OPS / Technical Maintenance / Vehicle Workshop / Fuel Tanker Maintenance), Stage II Redevelopment, Joint Logistics Unit (JLU-NQ) & Transit Accommodation
- RAAF Base, Williamstown
 - Lead in Fighter Facility, EWAC Facilities & Sitewide Communications Upgrade
- Ross Island Army
 - Maritime Centre & Base Radio Station
- Russell Offices Canberra R7 SCIF



HEALTH / ALLIED HEALTH

- Caboolture Private Hospital
- Caloundra Private Hospital, Mental Health Unit
- Greenslopes Private Hospital
 - Outpatients & Day Surgery
 - 120 Bed Ward Block
 - 5x Theatre Suite
 - Emergency Department
 - 60 Bed Ward Block
 - Hybrid Theatre
 - ICU/CCU & Recovery Extension
 - 2x Theatre & 2x Procedure Room Unit
 - Executive Administration
 - X-Ray & Oncology Units
- Griffith University, Medical & Oral Health Facility, Gold Coast
- John Flynn Private Hospital
 - 2x Theatre Suite
 - ICU/CCU & Recovery Extension
 - 30 Bed Ward Refurbishment
 - Emergency Department
- Hillcrest Private Hospital, Mental Health Unit
- Mt Isa Hospital Campus Redevelopment
- North West Private Hospital
 - 2x Theatre Suite
 - ICU/CCU & Recovery Extension
 - 60 Bed Ward Block
 - Consulting Suite Building
 - Multi-Deck Car Park
- Pindara Private Hospital
 - 210 Bed Ward Block
 - Hybrid Theatre
 - 4x Theatre Suite
 - ICU/CCU & Recovery Extension
 - Emergency Department
- Proserpine Nursing Home, Crystalbrook & Building B
- Queensland Institute of Medical Research, Smart State Building
- Robina Public Hospital
 - 24 Room Mental Health Ward Refurbishment
 - Imaging Department
 - Administration Refurbishment
- St. Andrews Private Hospital
 - Emergency Department
 - 120 Bed Ward Block
 - 2x Theatre, Recovery & ICU Extension
- Sunshine Coast Private Hospital, Ward 1A & 2A
- Sunshine Coast Private Hospital, Intensive Care Unit (ICU) / Critical Care Unit (CCU)
- Supported Living Accommodation, Cairns
- Supported Living Accommodation, Townsville
- Tropical Queensland Centre for Oral Health, Cairns
- University of New England, Anatomy Facility
- University of Sydney, Chemistry Building
- Wamuran II Residential Aged & Special Care
- Waterford RSL Care Centre



INFRASTRUCTURE

- Airport Link Bowen Hills Entry
- Australian Customs & Border Protection
- Brisbane Airport Customs House
- Brisbane Airport Corporation MAG Lighting
- Brisbane Airport, Physical Security
- Brisbane Aerospace
- Clem7 Tunnel Entry
- Gateway Upgrade Project (Sir Leo Hielscher Bridge)
- Goodwill Bridge
- Kurilpa Bridge (Security Upgrade)
- Miles Aerodrome
- Northern Busway
- North Lakes urban Redevelopment Design
- Queensland Rail 20 / 20 Upgrade Project
- Queensland Rail, Enoggera Station
- Queensland Rail, Deagon Station
- Queensland Rail, Gaythorne
- Queensland Rail, Ipswich Transit Centre
- Queensland Rail, Landsborough
- Queensland Rail, Manly
- Queensland Rail, Mayne Radio Room
- Queensland Rail, Mayne Control Centre
- Queensland Rail, Rocklea
- Queensland Rail, Rockhampton Station
- Queensland Rail, Shorncliffe
- Queensland Rail, Wynnum Central
- Royal Brisbane Hospital Bus Station, Brisbane
- South East Transit Bus Stations
- Warwick Ambulance Station



South East Transit Bus Stations



Gateway Upgrade Project (Sir Leo Hielscher Bridge)

RETAIL

- ALDI Stores South East Queensland
- ALDI Stores Northern New South Wales
- ALDI Stores Victoria
- Beenleigh Market Place
- BP Service Centre, Caboolture North
- BP Service Centre, Caboolture South
- BP Service Centre, Coomera
- BP Service Centre, Stapleton
- Brightwater Shopping Centre
- Eagers Showroom & Service Centres
- Ford Showroom, North Lakes
- Honda Showroom, Kunda Park
- Honda Showroom, North Lakes
- Groove Train, Brisbane
- Infiniti Showroom, Fortitude Valley
- Kmart Stockland Townsville Shopping Centre
- Mt Sheridan Plaza Extension, Cairns
- Muswellbrook Service Station
- Reliance Service Station, Bundaberg
- Scone Service Station
- Stockland Townsville Shopping Centre
- Subaru Service Centre Extension, Toowong
- Toyota Showroom, Brendale
- Toyota Showroom, Mt Gravatt
- Toyota Showroom, North Lakes



Stockland Townsville Shopping Centre

RESIDENTIAL

- Beach on Sixth Units, Maroochydore
- CoCo Apartments, Mooloolaba
- Essence on Kings, Caloundra
- Hayes Residence
- Kelvin Grove Student Accommodation
- Margate Development Apartments, Redcliffe
- Maycock Residence
- Meta Street Units, Mooloolaba
- Mon Komo Apartments, Redcliffe
- Mt Kilcoy Residence
- Rivage Apartments, Mackay
- Settlers Cove Apartments Stage 3, Noosa
- Sherwood Parklands Apartments Development, Brisbane
- Sirius Apartments, Margate
- The Cliffs Development, Kangaroo Point
- Waves on Ocean Apartments ,Yeppoon
- Water's Edge Residential Development, Brisbane
- Welsby Parade Units, Bribie Island



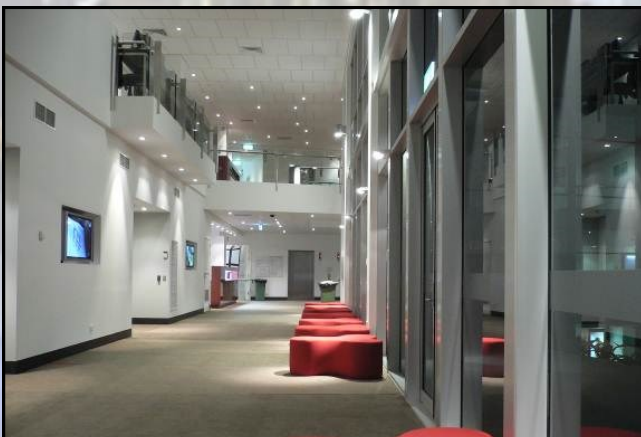
Water's Edge Residential Development



Mt Kilcoy Residence

EDUCATION

- Bardon State School
- BERS - Various Schools
- Bounty Boulevard State School
- Cairns Special School
- Caloundra South State School
- Caloundra State School Training Centre
- Caningeraba State School
- Cooler Cleaner Schools Project - Various Schools
- Coolum Beach Christian College - Science/Visual Arts Building
- Coolum Beach Christian College - Sports Hall
- Coomera Amity State School
- Coorparoo State School
- Eagle Junction State School
- Enoggera State School
- Fairholme College
- Faith Lutheran College – Sports Hall
- Fernbrooke State School
- Foxwell Road State Secondary College
- Gainsborough State School
- Goodna Special School
- Griffin State School
- Griffith University, Nathan Campus Heart
- Griffith University, South Bank Film School
- Inner City South State Secondary College
- James Nash State High School - Electrical Supply Investigation
- Kuraby State School
- Mango Hill State Secondary College
- Maroochydore State School
- Middle Park State School
- Narbethong & Buranda State School
- Noosaville State School
- Nursery Road State Special School
- Old Government House Refurbishment
- Ormeau Woods State High School
- Palm Beach SS
- Queensland University of Technology
- Queensland University of Technology, Block P, Kelvin Grove Campus
- Southbank Education & Training Precinct
- Southern QLD Institute of TAFE, Roma Campus Extension
- Springfield Anglican College - Block D Refurbishment
- Springfield Anglican College - Senior Learning Centre
- St Josephs Nudgee
- St Patricks College Gympie - New Admin Building
- Sunnybank Special School
- Taigum State School
- University of New England, Anatomy Facility
- University of Queensland, Arts Faculty Consolidation
- University of Queensland, Axon TEAL
- University of Queensland Duhig Building
- University of Queensland, Hartley Teakle Level 2 Laboratories
- University of Queensland Lakes
- University of Queensland Lakes Bridge
- University of Queensland SMI Building
- University of Sydney, Chemistry Building
- Yarrabilba State School
- Yarrabilba State Secondary School



University of Queensland SMI Building



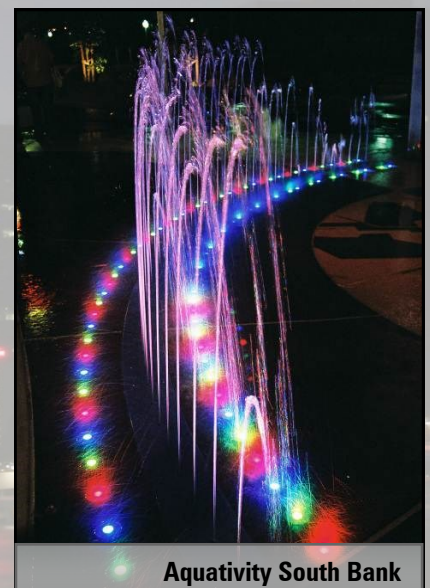
University of New England - Anatomy Facility

URBAN DESIGN

- Arcadia Street Redevelopment
- Beautiful Bowen
- Beenleigh Masterplan
- Beerwah Streetscape
- Boonah Streetscape Upgrade
- Brighton le Sands Promenade
- Bulcock Beach Redevelopment
- Bulcock Street Catenary Lighting and Streetscape
- Chinatown Mall
- Chinchilla Botanic Parklands
- Dickie Beach Caravan Park Lighting Upgrade
- Dickie Beach Precinct Redevelopment
- Elliot Springs
- First Avenue Redevelopment, Maroochydore
- Florence Street, Cairns
- Garden Square
- Gold Coast Gateway Artworks Project
- Gold Coast Narrowneck Pathway Lighting Upgrade
- Hanlon Park
- Jack Evans Boat Harbour Tweed Heads
- James Street Green Link, Caboolture
- Jubilee Park Lighting & CCTV Upgrade
- Kawana Aquatic Centre
- Landsborough Town Centre Redevelopment
- Mackay Botanic Gardens Redevelopment
- Mackay Racecourse
- Maleny Streetscape
- Marcoola Streetscape
- Margate SCIP
- Mary Street, Gympie
- Meridan Fields Clubhouse
- Mooloolaba Town Park Redevelopment
- Mooloolaba Transport Corridor Upgrade
- Mooloolaba Wharf Redevelopment
- Muller Park Lighting Concept
- Nambour Hub of the Hinterland
- North Bank, Brisbane
- Northshore, Hamilton
- Noosa Junction
- Noosa Visitor Information Centre
- Palmwoods Town Square Redevelopment
- Parklands Boulevard Development
- Park Road Boardwalk, Noosa
- Pebble Creek
- Post Office Square
- Pretty Proserpine
- Rainbow Beach Esplanade
- Redbank Plains Reserve
- Redcliffe Peninsular Rail Line Shared Pathway
- Redcliffe Seaside Rejuvenation Project
- Roma Street Parklands Rainforest Walk
- Smithfield Street Revitalisation
- South Bank Aquativity
- South Bank Boardwalk
- South Bank Lightwave Artwork, Design Triennial
- South Bank River Bend
- South Bank SHARC
- Stockland Newport - Waterside Park East
- Tintookie Park Redevelopment
- Upper Mary Street Revitalisation
- Warner Lakes Community Park



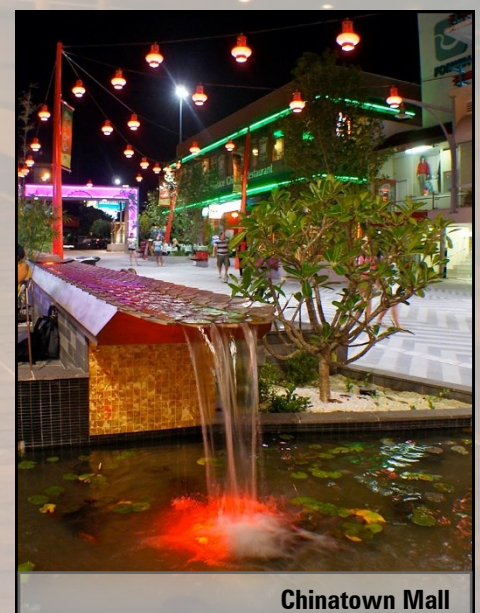
Arcadia Street



Aquativity South Bank



South Bank River Bend



Chinatown Mall