





Balwyn North

The space was exposed to the road, so a row of Waterhousias were placed along the boundary to create more privacy. The design included a space for outdoor dining, a fireplace and a bar. The smaller rear garden became a secluded private courtyard, where water was the main feature surrounding a small merbau deck.

The 3D feature wall also included a hidden access to the garage. This created a space that functions as a main thoroughfare as well as being aesthetically pleasing.

“WE BELIEVE IN WORKING
WITH YOU AND YOUR IDEAS
TO CREATE AN OUTDOOR
SPACE THAT REFLECTS
YOUR PERSONALITY.
OUR GARDENS BRING A
SENSE OF ORDER AND CALM
THAT IS BOTH FUNCTIONAL
AND AESTHETIC.”

Andrew Whyte - Founder, Whyte Gardens





What you get when you choose a landscape designer can vary from one to the other. Some may dazzle you with a design that you fall in love with, but they may leave you with no real idea of whether it can actually be built. You may also find you're given no clear idea of how much it will cost or how long it will take to bring to life.

At Whyte Gardens we actually build our own designs. So right from the start of our design processes we are always asking ourselves - "Can this be built?", "How long will it take?" and "How much will it cost?"

Why choose us



Jasmine

We also make sure that each garden we design is based on your brief, so that we give you an individually and personally designed garden, based on researching and discussing the best options for you. We don't simply take design modules off the shelf and try to put them together to make them fit. Your garden will be as unique as you are.

We are more than just designers of beautiful contemporary gardens. We handle the complete construction process too. As registered builders and members of Landscape Victoria, we are professionals in the true sense.

We make the process of bringing your dream garden to life smooth and simple. From the initial design through plant selection and construction, we handle it all, dealing with all external suppliers for you. You will have one point of contact throughout the project so you can just sit back, relax and watch it all take shape.

We care passionately about our work and want for you to have a garden you will be absolutely delighted with.





Our design philosophy

Hawthorn

The design started with the mature Brachychiton tree, which became the pivot point on the design. The lawn edging closer to the house was more linear and structured, and as you move through the space the sandstone edging becomes fluid forming a circle to distinguish the 'garden' area and create different zones.



We believe that the devil is in the detail.

Designing and constructing a garden is a huge task. Yet it's all the little things that will ultimately make it work or not.

It starts with ensuring the design meets your brief and will work on the site.

It's then about choosing the correct materials and proper plants, right from the start.

It includes knowing how to work with all the necessary suppliers, understanding what they need from us and what we need from them to ensure a seamless construction experience.

It's about selecting the right finishes, construction methods and materials to ensure all elements of your garden last for decades.

It's about knowing and understanding how all the elements of the design will fit together. This only comes from years of hard-won experience.

Finally it's about the details in the design that will make everything come together in one harmonious, integrated masterpiece, you can call your garden.





From dream to reality

Anyone can dream of a gorgeous garden. But to make it actually happen takes craft, skill and care. We go through several stages with you to ensure you will get the garden you've always wanted.

Stage 1 Initial consultation

This is our "get to know you" stage. You sit down with one of our Landscape Architects and tell us how you imagine your garden will be. You share with us your likes and dislikes, your ideas, your preferences.

We listen and offer suggestions, perhaps show you some past work we've done, share some images and ideas. If you are happy with how things feel at this stage, we can progress to the next stage.

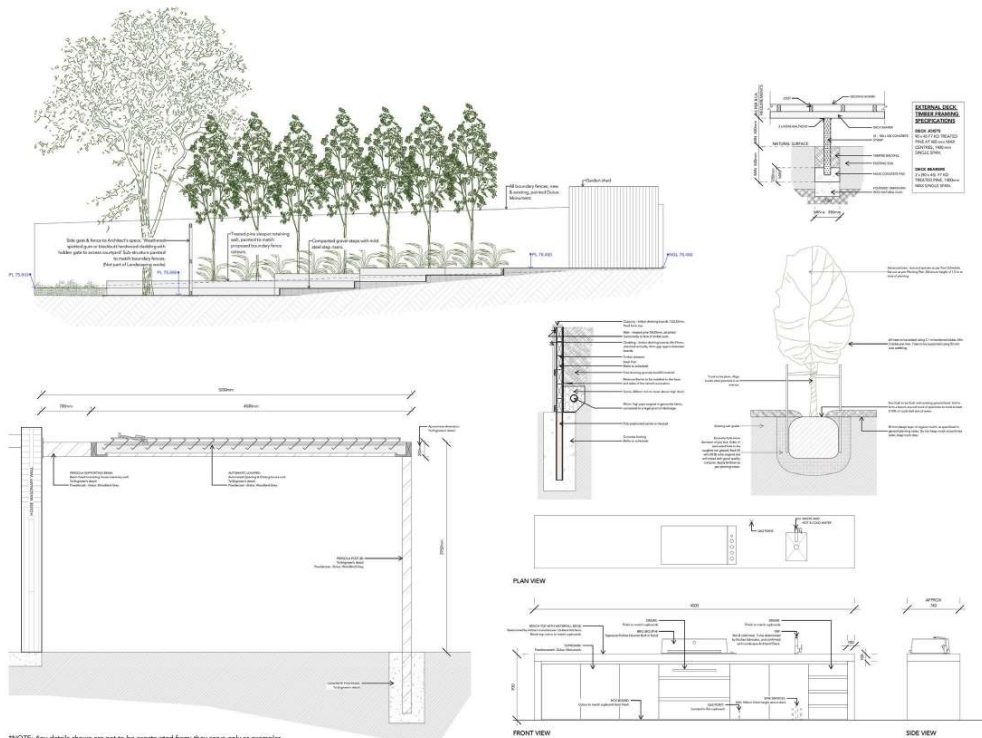


Final Stage Working Drawings

Once all the final plans have been approved by you and everyone else involved, we then move to working drawings and pre-construction preliminaries, so we can commence building your garden.

These drawings outline in detail how the project will be built. Everything we do has a dedicated foreman overseeing the whole project ensuring every detail of the construction drawings are being followed and materials and finishes are of the highest quality.

This stage also includes us organising all the relevant permits and approvals required for the project and ensuring that everything will be constructed in accordance with the required standards.



Ashburton

This project was focused around a mediterranean style garden, the main element being the pool and spa. The rest of the design complimented the pool; with an outdoor dining area including a rustic cypress pergola, as well as a sandstone paved space for entertaining around the pool. We also created a feature that linked the outdoor space to the interior. The three laser-cut corten steel panels and a row of Pyrus calleryana 'Capital' were placed along the boundary to create a feature, which connected the entire design.





Cercis Tree

Reviews

Melinda & Michael

"After building our dream house last year we moved into a house surrounded by dirt. After Christmas the process to transform our garden quickly began. Andrew was regularly on site with his fabulous team. With his 'hands-on' approach during the whole process, he exhibited talent and care to ensure our garden would be transformed perfectly.

Our garden's simplicity and style now complements our new home perfectly, and goes well beyond what we had hoped for. We thoroughly recommend Whyte Gardens to anybody looking for a quality landscaping experience."



Helen

"Whyte Gardens helped us to completely overhaul our tired, old, two-level and bedraggled backyard into a lovely open and neat space incorporating a pool, deck, play area and outdoor entertaining space.

Andrew had ideas, enthusiasm and great practical advice.

Three years later and our garden is now well established and works superbly for our family."

Geoff & Robyn

"When Robyn and I decided to transform our steeply sloping and 'rustically' un-manicured backyard into something more useable, we knew the job was big and way beyond us.

Whyte Gardens talked through our ideas then came up with a design. The result has been a dramatic transformation - creating large flat spaces fringed by curved new garden beds, creating multi-level play/entertainment zones. We were very satisfied with the way Whyte Gardens managed the process and trust we developed very quickly - we always felt he kept our interests in mind in managing costs and suggesting alternative approaches. We are exceptionally happy with the quality and creativity of the result, and surprised by how much value has been created for the money spent."



Merri & Alex

"The reason we chose Whyte Gardens to do our landscape gardening initially was the unique design they came up with. It was full of curves and such interesting features and complemented the house so well. We cannot speak highly enough of the whole operation and the outcome is perfect. We're very satisfied customers."



About us

Andrew Whyte and his team have over 20 years experience creating gardens that people love to live in.

We pride ourselves on listening to you and your ideas for your dream garden.

We specialise in creating contemporary spaces. We'll help you bring yours to life.

Whether it's a space for entertaining, a space for relaxing with your family or just a quiet contemplative corner.

We are Registered Builders and members of Landscape Victoria.

Blue Salvia







94 Milton Parade
Malvern, Victoria 3144
(03) 9017 4344
enquiries@whytegardens.com.au

whytegardens.com.au

