



weathertex

a better choice, naturally

Cladding | Panels | Weatherboards



Product Portfolio

NZ - 2019





CONTENTS

4 About Weathertex

5 Our Benefits

6 - 11 Natural Range

12 - 17 Selflok Range

18 - 23 Primelok Range

24 - 29 Weathergroove Range

Please note not all products are carried ex. stock. Some products can be ordered by indent only. Please check with your local building supply merchants for availability and lead times.

Selflok Ecogroove 300 Natural, Weathergroove 150 Smooth



Weathergroove 150 Natural

The right choice

When you purchase Weathertex you are buying from an ethically sound company that supports our environment, all the while creating a brilliant product we believe in. Now that's something to get behind... naturally.

Weathertex is a manufacturer of natural Australian hardwood weatherboards and architectural panels. Our products are made at the original 1939 factory using a unique process found nowhere else in the world.

Most Trusted Brand

Weathertex was voted Australia's Number 1 Most Trusted Brand for 2016 and 2018, in the Architecture and Design annual 'Top Trusted Brand' survey. With over 341 nominated brands and over 13,000 votes, this survey reveals Australia's top brands within the architecture, building, construction and design industries. Weathertex also won Number 1 Most Trusted Brand Winner in the 'External Wall Materials' category.

Our 'Green' Accreditations

100% Australian owned and manufactured, Weathertex uses certified state forest or private hardwoods from controlled sources. Proud and determined to promote environmental and sustainable performance measures, we have worked hard to ensure our products are third party accredited. Weathertex has been through a rigorous life-cycle evaluation from Global GreenTag to determine our "green performance" and we are proud to announce we have the FIRST GLOBAL manufactured product to receive a Platinum certification with a GreenRate Level A for our Natural products, and Gold Certification for all our flat primed profiles.

Global GreenTag International have designed a Product Health Declaration (PhD) to assess chemical hazards of each ingredient throughout the product lifecycle, and the risk associated with exposure and handling. We have been assessed using this system in an attempt to be even more transparent with our customers in regards to the safety of our products.

In 2017 Weathertex was added to the International Living Future Institute Declare Label database. Declare is a voluntary program aiming to transform the building materials industry towards healthier products. The labelling answers three important questions - Where does a product come from? What is it made of? Where does it go at the end of its life?

We are also 100% Certified as Chain of Custody through the Programme for the Endorsement of Forest Certification, or PEFC. The Programme is an international non profit, non-governmental organization dedicated to promoting Sustainable Forest Management through independent third-party certification. With over 30 endorsed national certification systems and more than 240 million hectares of certified forests, PEFC is the world's largest forest certification system. PEFC works through the entire forest supply chain promoting good forest practices and ensuring products are produced following the highest ecological, social and ethical standards.

For more information on our environmental standards and certifications, visit <http://www.weathertex.com/nz/about-us/certifications-partners/>



The right benefits

- **BRANZ Appraised** - for the various installation systems. Appraisal numbers 511, 512, 513 and 514.
- **Third Party Sustainable Credentials** - With a better than zero carbon footprint - GreenTag certification, PhD and Declare labeling.
- **Warranty** - Guaranteed not to rot, split or crack for up to 15 years on Natural and 25 years on Primed.
- **Value for money** - install benefits help save on labour and time costs.
- **Easy to install** - only standard carpenter's tools are required. Lightweight material with off-stud joining options.
- **Longevity** - natural Australian timber, made to last.
- **Termite Resistant** - Sugars and starches are removed.
- **Safe** - can be sawn or cut indoors.
- **Reliable** - Voted Number 1 'Most Trusted Brand' of Architecture & Design 2016 and 2018 Australia. Also category winner in 'External Wall Materials.'
- **Australian made and owned** - proudly made in Australia.



511 [2019]
512 [2019]
513 [2019]
514 [2019]



**THE FIRST MANUFACTURED PRODUCT
GLOBALLY TO ACHIEVE PLATINUM
GREENTAG™ CERTIFICATION**



Weathergroove150 Natural



Weathergroove 150 Natural

Natural Cladding

The Natural range is an unprimed board which provides a unique appearance, with the characteristics and looks of raw, undressed timber. The Natural surface is pressed to create a woodgrain effect. Its rough, deep cut pattern shows all the knots, grains and imperfections of natural timber. It can be left to weather naturally or be stained.

When allowed to weather naturally, the depth of colour will vary, subject to location and sun exposure allowing for unique styles.

The Natural Range weatherboards and panels are covered by a 15 year warranty not to rot, split or crack. Please see the warranty section of the Weathertex website for full details.



Selflok VGroove 150 Natural

NATURAL



* Refer to the Weathertex Manufacturer's Warranty Conditions

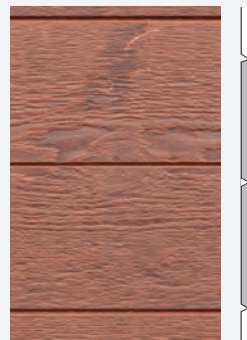
Weatherboards



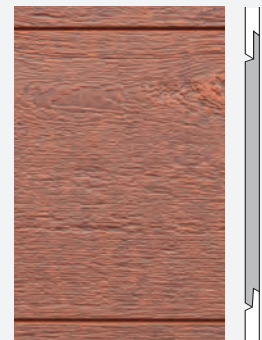
SELFLOK
ECOGROOVE 150[^]
NATURAL
300 x 3660mm



SELFLOK
ECOGROOVE 300[^]
NATURAL
300 x 3660mm
Indent only



SELFLOK
VGROOVE 150[^]
NATURAL
300 x 3660mm
Indent only



SELFLOK
VGROOVE 300[^]
NATURAL
300 x 3660mm
Indent only

Panels



WEATHERGROOVE
75[^] NATURAL
3660 X 1196mm
Indent only



WEATHERGROOVE 150[^]
NATURAL
3660 X 1196mm



WEATHERGROOVE 300[^]
NATURAL
3660 x 1196mm
Indent only

NEW



511 [2019]
512 [2019]
513 [2019]
514 [2019]



All Weatherboards are 9.5 mm in thickness. [^] Refers to groove spacing.
Colour of product may differ to photos which have been lightened for printing.

Natural Styles

This guide explains the three main techniques to treat the Natural Range (unprimed) weatherboards and panels; Sun bleaching, staining and maintaining. Please refer to the installation manual for warranty and technical information.

RETAIN ORIGINAL COLOUR



Weathertex Natural begins as a dark hardwood colour (pictured). Left uncoated it will lighten. To retain the original colour the boards should be stained.

If the boards lighten but you want to restore them to their original colour, you can do so at any time. Clean the boards with an appropriate deck cleaner and a sturdy deck cleaning brush before staining.

UNSEALED (Naturally Lighten)

Left to weather naturally by the sun, the timber will lighten and 'silver off' after a period of time. This can produce some beautiful results that become a unique feature of the construction. For best results use this technique on buildings that are exposed to full sun and aren't obscured by fences, trees or awnings. Weathertex is made with Australian hardwood timber and colours may slightly vary season to season.

To stop the silvering off process the boards can be stained at any time which will protect the boards from the sun, as well as allow for a range of colours and depth. Boards can be brought back to their original dark colour by first scrubbing with a deck cleaner and then applying the appropriate coloured stain.

COLOUR STAIN & SEALED

Weathertex Natural range can be stained and sealed in the same manner as other hardwood timbers. Wash the boards down first with deck cleaner. Make sure the boards are clean and dry before staining. When staining follow the direction of the cladding to ensure each board has an even coating.

Coat the boards with a soft brush first before cutting in the edges. Add another coat, then cut in again. A third coat is optional but recommended, and there is no need to cut in the edges again on the third coat. Keep a wet edge throughout to make sure visible layers aren't seen on the finished product. Stopping and starting during coating may lead to an uneven finish as the stain will dry in uneven layers.

We don't recommend a clear coats or varnish, as water based stains with pigment help protect the timber from UV. Maintenance of the stain is required to stop fading over time. Please make sure to follow all stain product instructions as they may vary.



0 MONTHS: Recently built, this shows the beginning colour of Weathertex Natural boards.



4 MONTHS: The board shows signs of lightening.



7 MONTHS: The board is continuing to lighten.



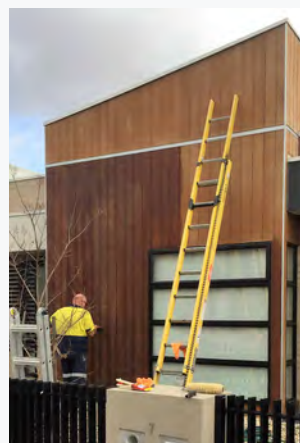
17 MONTHS: The boards are now a light blonde colour.



36 MONTHS: The boards are now very light, and are about to begin to be restored.



CLEANING: Wash the boards with a deck cleaner and a firm brush.



STAINING: Stain in the same direction that the boards run - vertical for vertical cladding.



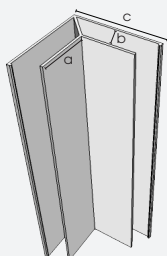
COMPLETE: After 3 coats the timber is restored and is now UV protected.

Note: This project is only an example of the lightening and restoring process. Different projects will lighten at different speeds depending on location and exposure to sunlight.

Natural Accessories

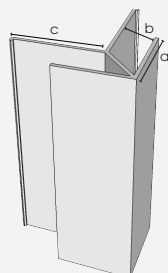
Trimtec accessories

SMALL INTERNAL LF CORNER



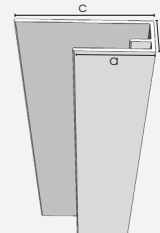
L = 3660mm
a = 27mm
b = 11mm
c = 55mm

SMALL EXTERNAL LF CORNER



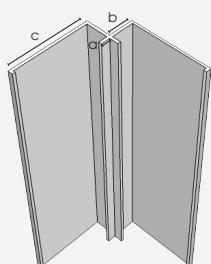
L = 3660mm
a = 27mm
b = 11mm
c = 31mm

SMALL END STOP



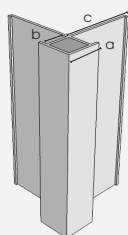
L = 3660mm
a = 27mm
b = 11mm
c = 45mm

SMALL INTERNAL CORNER



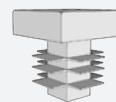
L = 3660mm
a = 4mm
b = 11mm
c = 35mm

SMALL EXTERNAL CORNER



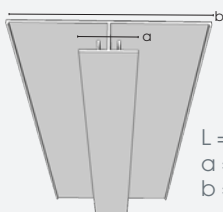
L = 3660mm
a = 17mm
b = 11mm
c = 35mm

SMALL CORNER PLUG



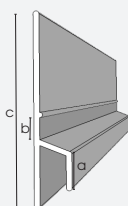
Use with the Small external corner

LONG VERTICAL JOINER



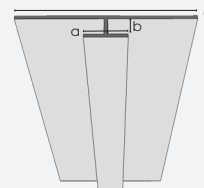
L = 3660mm
a = 20mm
b = 70mm

SMALL Z FLASHING



L = 3670mm
a = 10mm
b = 10mm
c = 73mm

WEATHERGROOVE JOINER



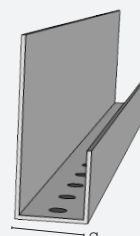
L = 3660mm
a = 11mm
b = 5mm
c = 50mm



Weathergroove 150 Natural

Cavity wall system

LARGE CAVITY CLOSER



L = 1830mm
a = 20mm

NEW

Weathergroove 75mm Natural



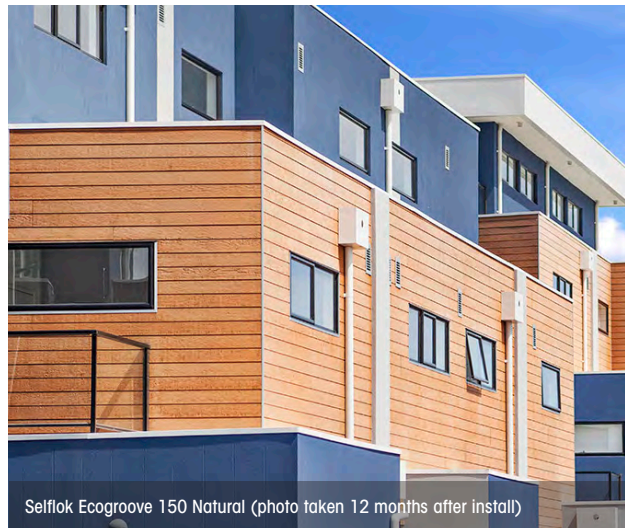
Selflok Ecogroove 300 Natural



Weathergroove 300 Natural (Battens)



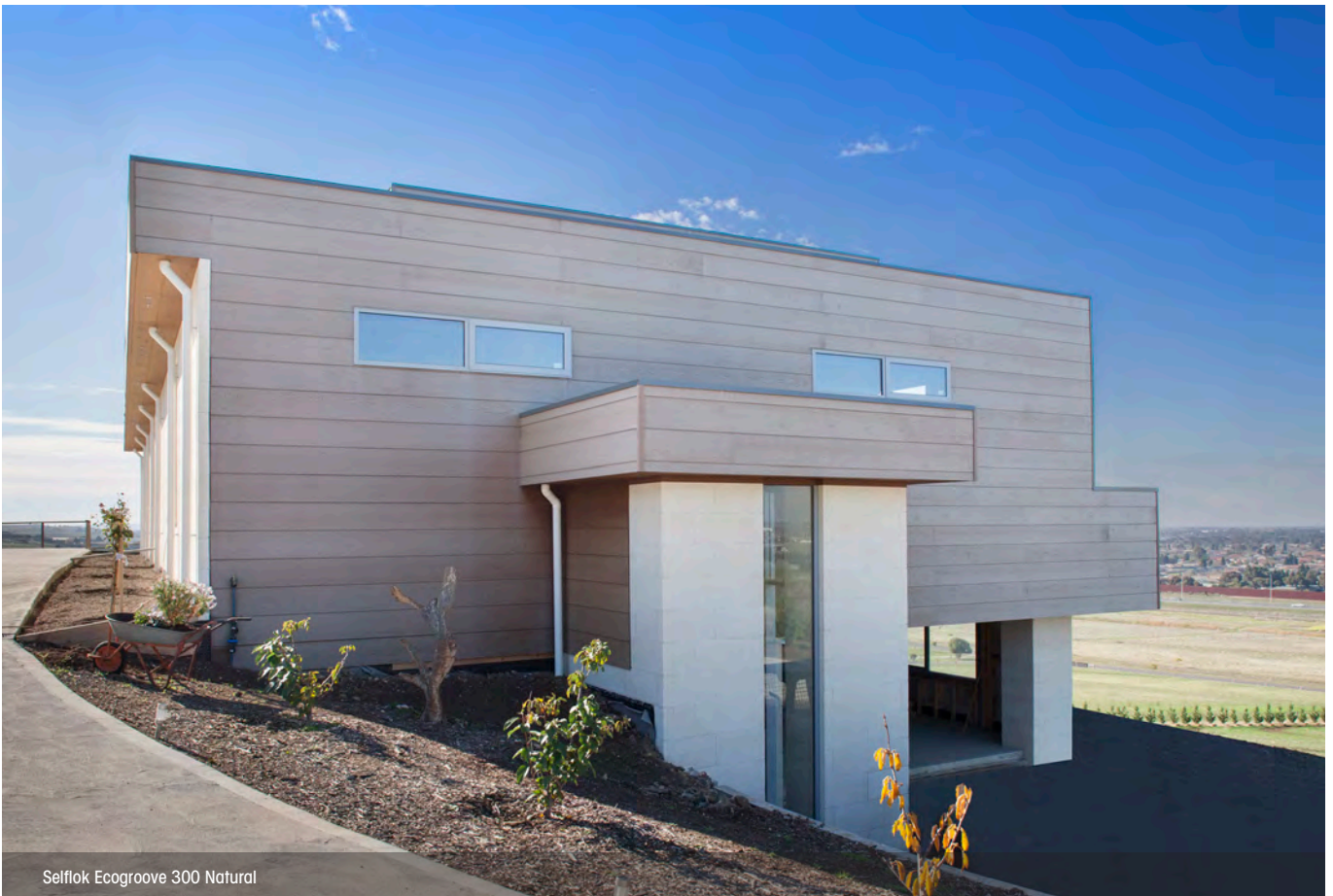
Weathergroove 150 Natural



Selflok Ecogroove 150 Natural (photo taken 12 months after install)



Weathergroove 150 Natural (aged)



Selflok Ecogroove 300 Natural



Selflok Ecogroove 150 Smooth



Selflok Ecogroove 150 Smooth

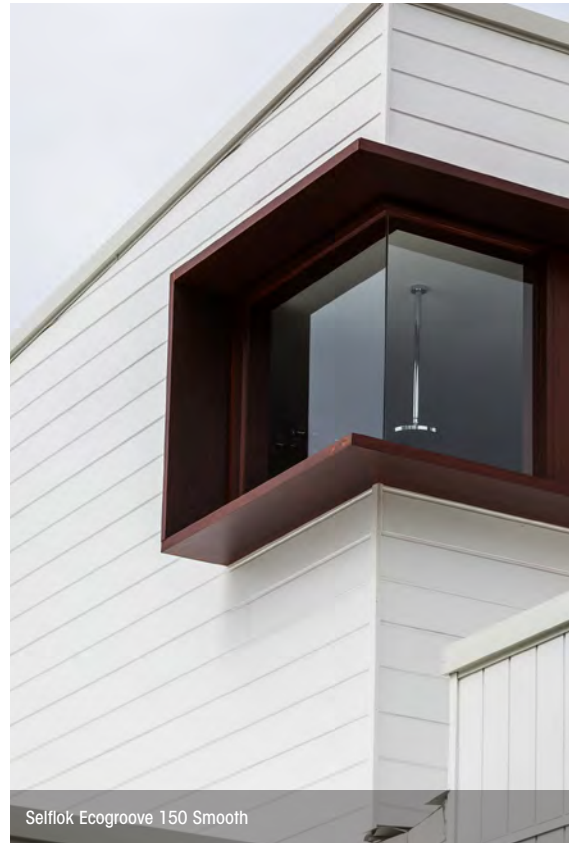
Selflok Weatherboards

A favourite in the Weathertex family, Selflok Weatherboards have the simplest self-locking system, which allows every board to self gauge. The precise routing gives the product that beautiful and unique ship lapped profile that makes it the first choice for many.

In the Selflok range are the increasingly popular Selflok Ecogroove Weatherboards. The Selflok Ecogroove Smooth is the ideal choice for a smooth-to-touch finish, whereas the Selflok Ecogroove Woodsman provides the distinct wood grain texture of natural timber. Both are available in varying sizes.

Advantages

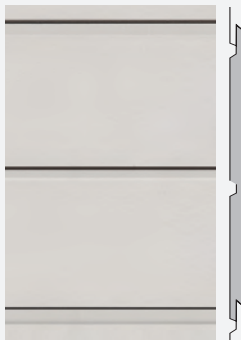
- The unique lapping system allows a quick and easy installation.
- It is a durable and lightweight product.
- Requires only standard woodworking tools.
- Pre-primed.
- No LRV restrictions. Can be painted in dark colours without affecting warranty conditions.



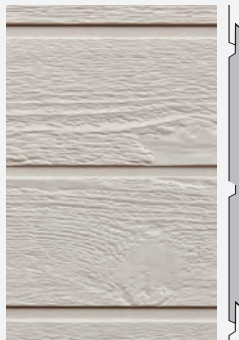
Selflok Ecogroove 150 Smooth



* Refer to the Weathertex Manufacturer's Warranty Conditions



SELFLOK
ECOGROOVE 150[^]
SMOOTH
300 x 3660mm



SELFLOK
ECOGROOVE 150[^]
WOODSMAN
300 x 3660mm
Indent only



SELFLOK
ECOGROOVE 300[^]
SMOOTH
300 x 3660mm



SELFLOK
ECOGROOVE 300[^]
WOODSMAN
300 x 3660mm
Indent only



511 [2019]
512 [2019]
513 [2019]
514 [2019]



SELFLOK MILLWOOD
SMOOTH
300 x 3660mm



SELFLOK MILLWOOD
RUFF-SAWN
300 x 3660mm



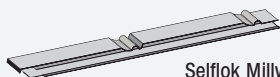
SELFLOK OLD COLONIAL
SMOOTH
300 x 3660mm
Indent only

All Weatherboards are 9.5 mm in thickness. ^ Refers to groove spacing.

Selflok Accessories

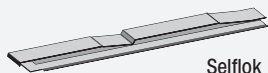
Weathertex accessories

MILLWOOD JOINERS



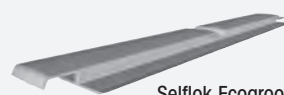
Selflok Millwood 300mm
Smooth or Ruff-Sawn

OLD COLONIAL JOINERS



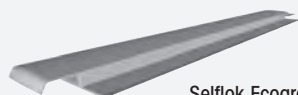
Selflok Old Colonial Smooth

ECOGROOVE 150 JOINERS



Selflok Ecogroove 150 Smooth, or
Woodsman.

ECOGROOVE 300 JOINERS

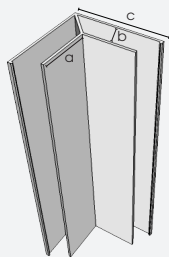


Selflok Ecogroove 300 Smooth,
or Woodsman

Note: All joiners are installed off stud.

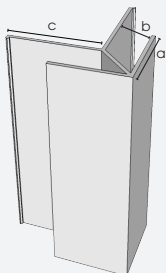
Trimtec accessories

SMALL INTERNAL LF CORNER



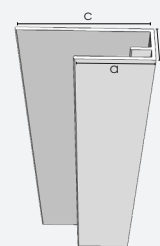
L = 3660mm
a = 27mm
b = 11mm
c = 55mm

SMALL EXTERNAL LF CORNER



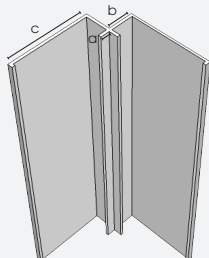
L = 3660mm
a = 27mm
b = 11mm
c = 31mm

SMALL END STOP



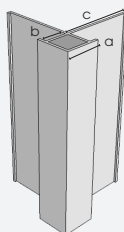
L = 3660mm
a = 27mm
b = 11mm
c = 45mm

SMALL INTERNAL CORNER



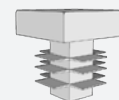
L = 3660mm
a = 4mm
b = 11mm
c = 35mm

SMALL EXTERNAL CORNER



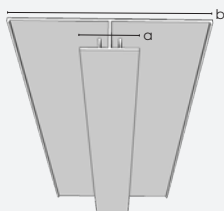
L = 3660mm
a = 17mm
b = 11mm
c = 35mm

SMALL CORNER PLUG



Use with the Small external corner

LONG VERTICAL JOINER

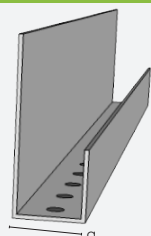


L = 3660mm
a = 20mm
b = 70mm

Cavity wall system

LARGE CAVITY CLOSER

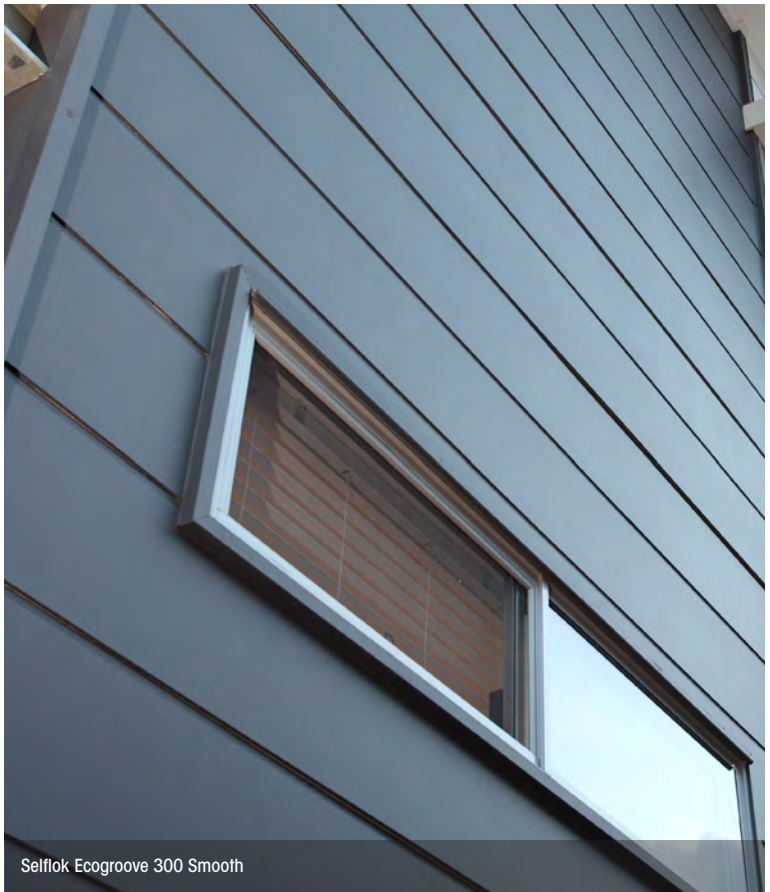
L = 1830mm
a = 20mm



Selflok Millwood Ruff-Sawn



Selflok Millwood Smooth



Selflok Ecogroove 300 Smooth



Selflok Millwood Smooth



Selflok Ecogroove 150 Smooth



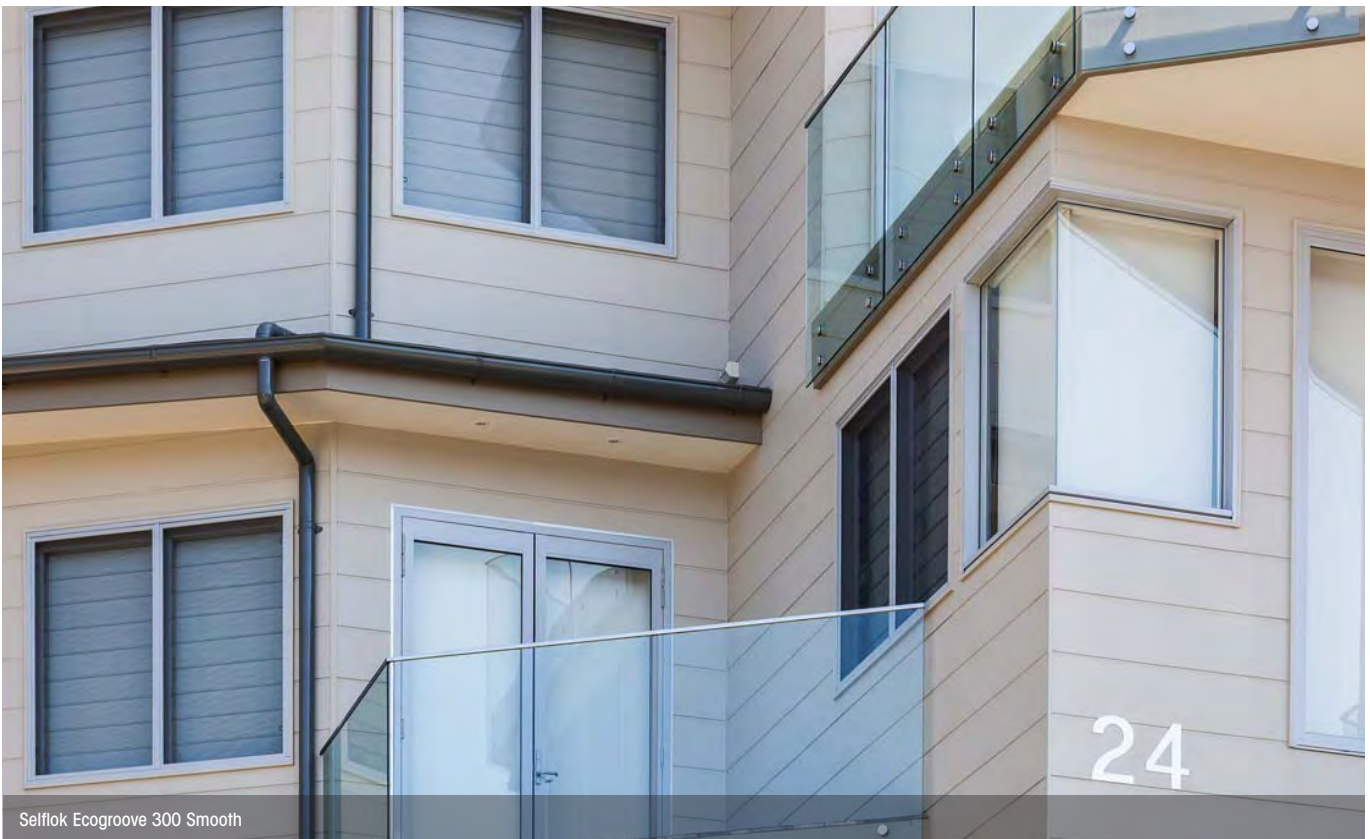
Selflok Ecogroove 150 Smooth



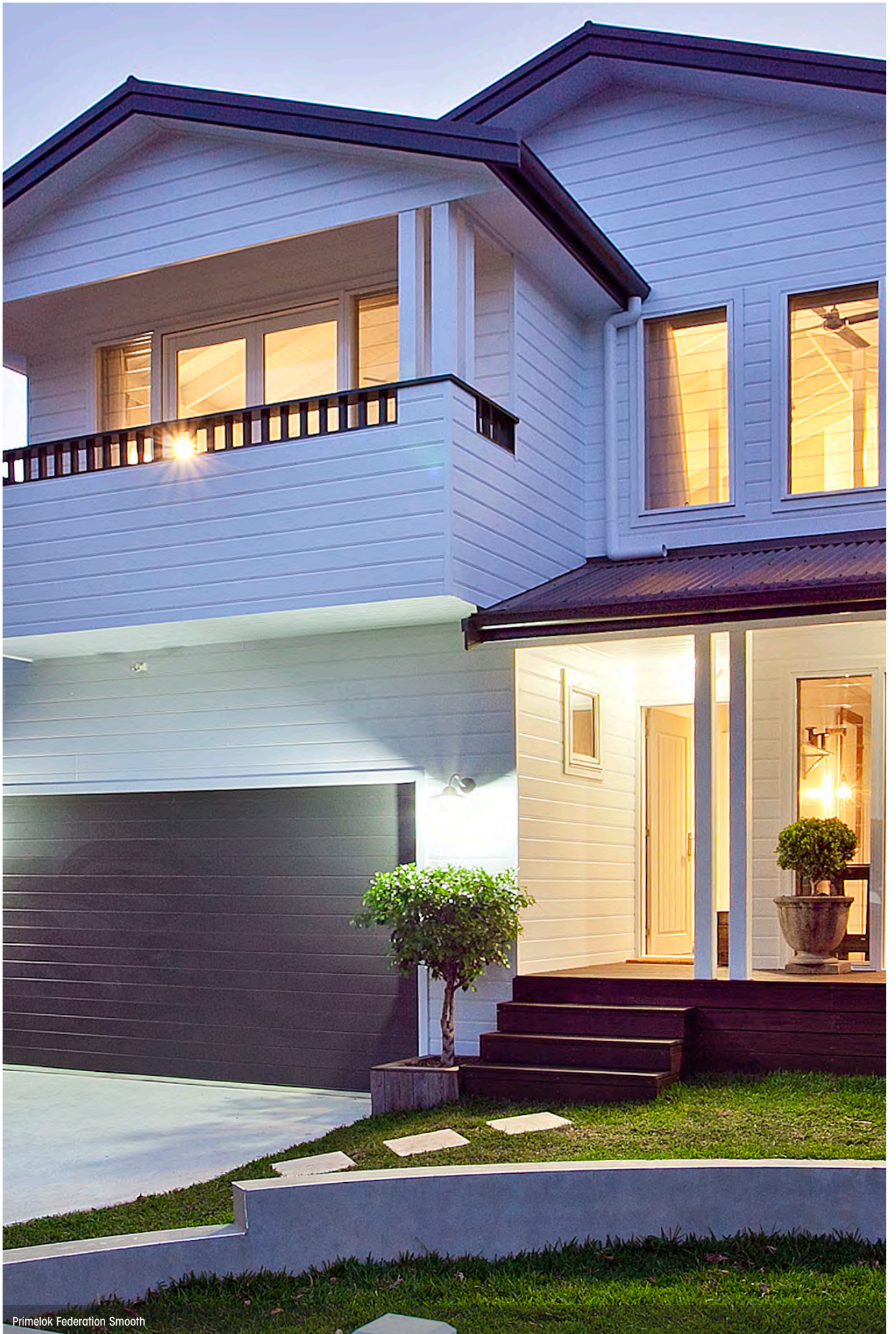
Selflok Ecogroove 300 Smooth



Selflok Ecogroove 150 Smooth



Selflok Ecogroove 300 Smooth



Primelok Federation Smooth

Primelok Weatherboards

Our exclusive Weathertex Primelok fixing system ensures a perfect and easy alignment of the boards, reducing installation time. The overlapping of each board conceals fixings, resulting in smooth, clean, straight lines.

Primelok Weatherboards are suitable for gun nailing installation, and pre-primed as a standard feature.

Advantages

- The unique lapping system allows a quick and easy installation.
- It is a durable and lightweight product.
- Requires only standard woodworking tools.
- Pre-primed.
- No LRV restrictions. Can be painted in dark colours without affecting warranty conditions.



Primelok Shadowwood Smooth



* Refer to the Weathertex Manufacturer's Warranty Conditions



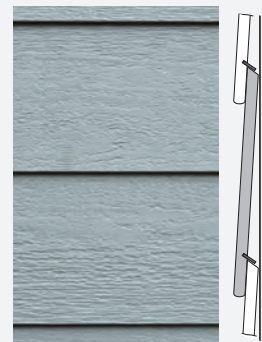
511 [2019]
512 [2019]
513 [2019]
514 [2019]



PRIMELOK SMOOTH
200 x 3660mm



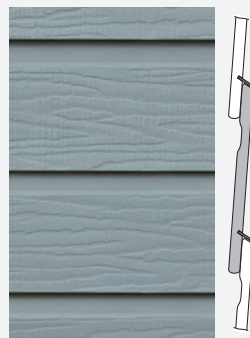
PRIMELOK RUFF-SAWN
200 x 3660mm
Indent only



PRIMELOK WOODSMAN
200 x 3660mm



PRIMELOK FEDERATION SMOOTH
170 x 3660mm
Indent only



PRIMELOK FEDERATION RUFF-SAWN
Width: 170mm x 3660mm
Indent only



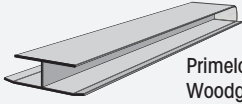
PRIMELOK SHADOWWOOD SMOOTH
Width: 170mm x 3660mm

All Weatherboards 9.5 mm in thickness.

Primelok Accessories

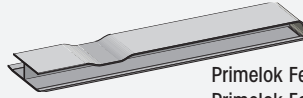
Weathertex accessories

TRADITIONAL OFF STUD JOINER



Primelok 200 smooth, or Woodgrain joiner for Primelok Ruff-Sawn, Primelok Woodsman

FEDERATION JOINERS



Primelok Federation Smooth, Primelok Federation Ruff-Sawn

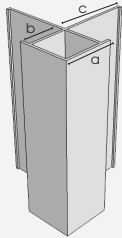
SHADOWOOD JOINERS



Primelok Shadowood Smooth

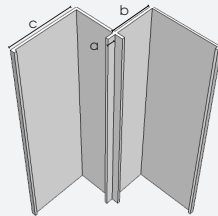
Trimtec accessories

LARGE EXTERNAL CORNER



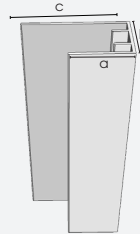
L = 3000mm
a = 27mm
b = 21mm
c = 35mm

LARGE INTERNAL CORNER



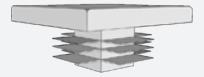
L = 3000mm
a = 4mm
b = 21mm
c = 35mm

LARGE END STOP



L = 3660mm
a = 27mm
b = 21mm
c = 45mm

LARGE CORNER PLUG



Use with Large External corner

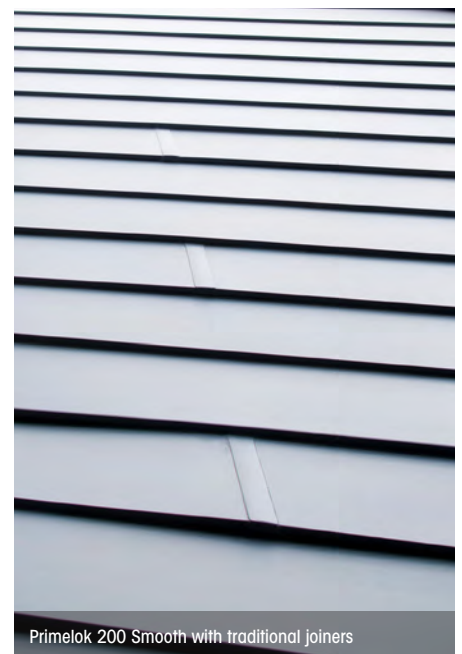
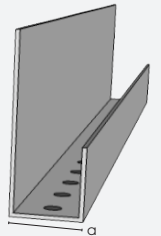


Primelok Federation Smooth

Cavity wall system

LARGE CAVITY CLOSER

L = 1830mm
a = 20mm



Primelok 200 Smooth with traditional joiners



Primelok 200 Smooth



Primelok Shadowood Smooth



Primelok 200 Smooth



Primelok 200 Smooth



Primelok Federation Smooth



Primelok Shadowood Smooth



Primelok Shadowood Smooth



Weathergroove 75 Smooth



Weathergroove 300 Smooth

Weathergroove Panels

Weathergroove is the largest panel available in the New Zealand market. This vertically grooved panel is ideal for covering large areas in a short time and it's versatility offers endless possibilities.

For improved performance, an exclusive joining system has been designed to clip onto the rebated edges of each panel, blending in perfectly with each Weathergroove sheet for a continuous panel finish. Please see the Weathertex Installation Manual for details.

Advantages

- Off-stud joining system
- Quick installation
- No sealant or adhesives required for sheet jointing installation
- Pre-primed
- 3660mm height panel size - the largest available in the market
- Requires only standard woodworking tools.
- No LRV restrictions. Can be painted in dark colours without affecting warranty conditions.
- Available also in Natural.



Weathergroove 150 Smooth



* Refer to the Weathertex Manufacturer's Warranty Conditions



511 [2019]
512 [2019]
513 [2019]
514 [2019]



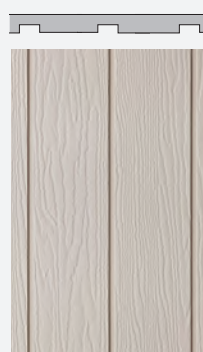
NEW



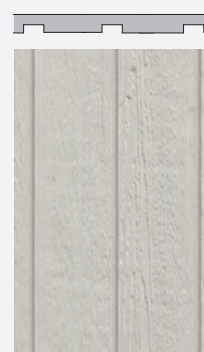
WEATHERGROOVE 75 SMOOTH**



WEATHERGROOVE 150 SMOOTH



WEATHERGROOVE 150 RUFF-SAWN

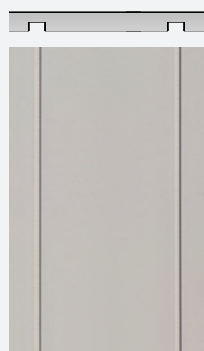


WEATHERGROOVE 150 WOODSMÁN

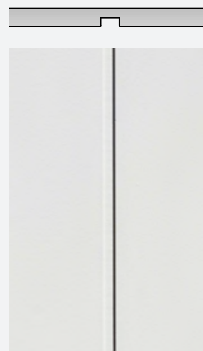
WEATHERGROOVE SIZES

2440 x 1196mm
2745 x 1196mm
3660 x 1196mm

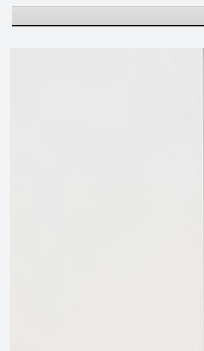
Thickness: 9.5mm



WEATHERGROOVE 300 SMOOTH*
Indent only



WEATHERGROOVE 600 SMOOTH*
Indent only



WEATHERGROOVE 1200 SMOOTH*
Indent only

* Only available in 3660mm x 1196mm and 2745mm x 1196mm

** Only available in 3660mm x 1196mm

Weathergroove Accessories

Trimtec accessories

WEATHERGROOVE JOINER

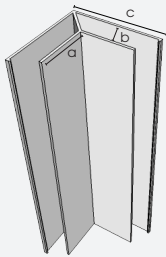


2440, 2745, 3660mm to fit the varying panel sizes.



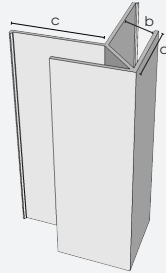
Trimtec accessories

SMALL INTERNAL LF CORNER



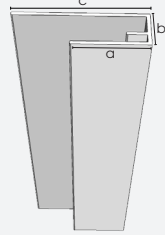
L = 3660mm
a = 27mm
b = 11mm
c = 55mm

SMALL EXTERNAL LF CORNER



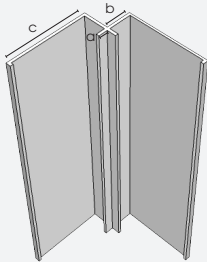
L = 3660mm
a = 27mm
b = 11mm
c = 31mm

SMALL END STOP



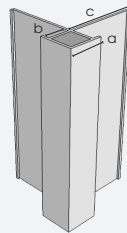
L = 3660mm
a = 27mm
b = 11mm
c = 45mm

SMALL INTERNAL CORNER



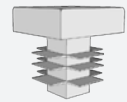
L = 3660mm
a = 4mm
b = 11mm
c = 35mm

SMALL EXTERNAL CORNER



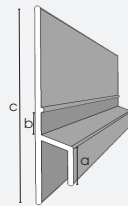
L = 3660mm
a = 17mm
b = 11mm
c = 35mm

SMALL CORNER PLUG



Use with the Small external corner

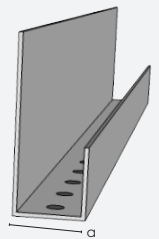
SMALL Z FLASHING



L = 3670mm
a = 10mm
b = 10mm
c = 73mm

Cavity wall system

LARGE CAVITY CLOSER



L = 1830mm
a = 20mm



TRIMTEC - made from anodised aluminium. WEATHERTEX ACCESSORIES - made from PC/ABS alloy. CAVITY CLOSER - made from Colorbond.



Weathergroove 150 Smooth



Weathergroove 600 Smooth



Weathergroove 1200 Smooth, Weathergroove 150 Smooth, Selflok Ecogroove 150 Natural



Weathergroove 150 Woodsman



Weathergroove 150 Smooth



Weathergroove Smooth 150, 300, 600, 1200mm



Weathergroove 150 Woodsman



Primelok Federation Smooth



Selflok Ecogroove 150 Woodsman



Weathergroove 150 Natural, Weathergroove 150 Ruff-Sawn



NEW RELEASE
75mm Available in Natural and Smooth

Distributor: ITI Timspec
Ph: 0800 ITI NZL
Email sales@itifimspec.co.nz



Weathergroove 75mm Smooth

VOTED #1
TRUSTED BRANDS
2016 2018
ARCHITECTURE//DESIGN

 **weatherterx**
a better choice, naturally

weatherterx.co.nz



511 [2019]
512 [2019]
513 [2019]
514 [2019]



* Refer to the Weatherterx Manufacturer's Warranty Conditions

Last updated October 2019
Disclaimer: Product Portfolio to be used only as a guide.
Always refer to the installation manual for correct installation & warranty.
Information in this document is for New Zealand only.

Weatherterx® is made in Australia by Weatherterx Pty Ltd ABN 67 084 713 986
PO Box 21, Raymond Terrace NSW 2324