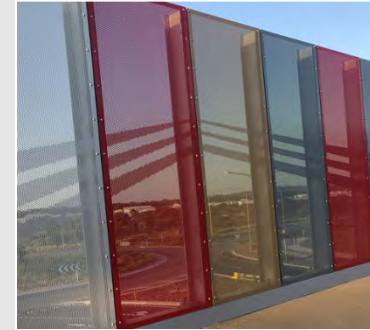
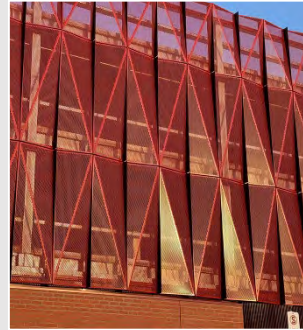
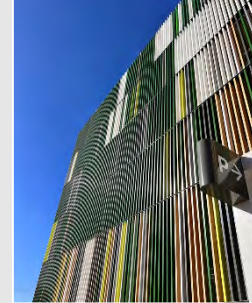
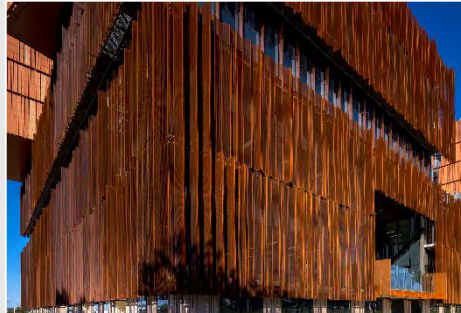


LOOKBOOK 2023



A valmont COMPANY



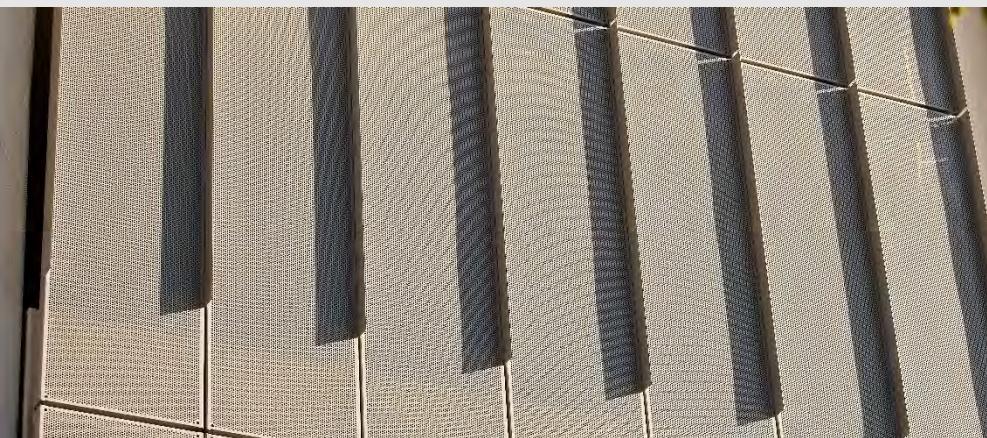
NATIONWIDE CHILDRENS HOSPITAL

Columbus Ohio, USA



Product: Perforated Metal Architect: NBBJ Design

Webforge Locker is honoured to have supplied 3mm perforated panels for the Silver Parking Garage at Nationwide Children's Hospital, covering an expansive area of 4,032 square metres. These panels, boasting integrated fins, seamlessly blend functionality with aesthetic appeal. Collaborating closely with NBBJ Design, our contribution to the project's modern exterior is accentuated by the inclusion of YKK AP wall systems and canopies, creating a unified architectural statement that reflects innovation and excellence. Anderson Aluminium, the installing subcontractor, has expressed admiration for our work on the installation of 1,200 perforated panels, acknowledging our pivotal role in the project's success. This collaborative effort underscores our commitment to delivering innovative architectural solutions that meet the highest standards of quality and design.



NORTH MELBOURNE FOOTBALL CLUB

Nth Melbourne, Victoria

Product: Pic Perf®

Architect: HB Architects

Presenting Pic Perf® by Webforge Locker, showcased in the second stage of this North Melbourne Football Club expansion. This innovative architectural marvel features an interactive LED and perforated skin adorning the upper floor, offering a captivating fusion of design and functionality. Celebrating the essence of club, community, and country, the intricate perforations and dynamic lighting scheme create a mesmerising spectacle. As night falls, Arden Street comes to life with the radiant glow emanating from this stunning creation, symbolising the vibrancy and unity within the local community.

HB Architects' commitment to pushing the boundaries of modern architecture while honouring tradition and connection with the collaboration of Pic Perf®



VICTORIAN HEART HOSPITAL

Clayton, Victoria



Product: Custom Perforated Metal Facade
Architect: Conrad Gargett and Wardle Architecture

Webforge Locker played a pivotal role in realising the vision of the Victorian Heart Hospital, crafting a captivating facade inspired by cardiogram patterns. We meticulously manufactured 10,655 square metres of perforated panels from weathered steel, showcasing our efficiency with zero waste production despite tight deadlines and complex folding requirements.

Our perforated weathered steel screen serves as both a stunning architectural feature and a practical device for glare control, allowing occupants to enjoy uninterrupted views of the surroundings.

The geometric folds pay homage to heart monitors used in clinical care, adding a poignant layer to the building's design.

Aligned with environmentally sustainable design principles, the facade incorporates high-performance strategies aimed at enhancing occupant wellbeing and reducing energy consumption. By implementing architectural shading, thermal bridging mitigation, and enhanced insulation, we've contributed to indoor comfort while minimising the building's environmental impact.

WAGGA WAGGA HOSPITAL CAR PARK

Wagga Wagga, New South Wales

Product: Linear Façade System

Architecture: Health Infrastructure NSW

Webforge Locker proudly contributed to the completion of a significant project at Wagga Wagga Base Hospital, showcasing our expertise in manufacturing linear facade systems. The project involved the construction of a 350-space multi-storey carpark, greatly enhancing parking capacity and accessibility for staff, patients, and visitors to healthcare services.

Despite its complexities, which included alterations to existing occupied buildings within the operational constraints of a hospital environment, our team successfully dedicated over 91,000 hours to the project. The result is a state-of-the-art carpark designed to optimise traffic and pedestrian safety.

Completed in June 2023, the six-level facility complements additional on-grade car parks finished in September 2021 and December 2022. This expansion significantly improves parking availability for hospital staff, furthering our commitment to enhancing access and convenience for all stakeholders.



QUEENSLAND RAIL INFRASTRUCTURE

Stable Swamp Creek and Chelmer's Street Bridges



Product: Gripspan 6520
Partners: Sun Engineering

Queensland Rail's recent upgrades to bridges over Stable Swamp Creek and Chelmer's Street Bridge mark a significant step in enhancing infrastructure safety and efficiency. Central to these upgrades is the implementation of Gripspan Walkway Profile 6520, a cutting-edge flooring system designed with safety as a top priority. Engineered with an anti-slip surface, it ensures secure access walkways, crucial for railway maintenance and operations.

What sets Gripspan apart is its remarkable load-carrying capacity, capable of spanning long distances without the need for extensive support structures. This not only streamlines installation but also reduces maintenance requirements over time. Compliant with AS1657 standards, it meets the stringent safety regulations mandated for railway infrastructure.

These upgrades signify a commitment to ensuring the safety and reliability of Queensland's railway network for years to come.

ASTOR PARK

Columbus Ohio, USA

PRODUCT: Atmosphere Perforated System

ARCHITECT: Moody Nolan

Introducing Astor Park in Columbus, Ohio, a testament to innovative design by Moody Nolan. At the heart of this architectural marvel lies our contribution – Atmosphere, Perforated Panels meticulously crafted by Webforge Locker. Spanning 144,000 square feet, these panels adorn the facade, not merely as embellishments but as functional elements promoting natural ventilation and augmenting the aesthetic allure.

With 30,000 square feet per floor, Astor Park stands as a beacon of modernity, housing a 682-car parking garage alongside first-floor retail amenities. Covered tenant pavilions and spacious balconies grace each level, offering panoramic views of the river and the stadium's pitch. Thanks to our collaboration, Astor Park epitomises architectural excellence and sets a new standard for urban development in Columbus, Ohio.



MONASH HOSPITAL CAR PARK

Clayton, Victoria



Product: Linear Façade System

Architect: Clarke Hopkins Clare Architects

Our custom-designed laser-cut facade from Webforge Locker has turned Monash Medical Centre's car park into a contemporary architectural masterpiece, transitioning from concept to reality.

Fabricated at our Dandenong facility, our meticulously crafted fins, totalling over 3000, now embellish the entire car park exterior.

The distinctive curve on the north elevation seamlessly integrates with the existing facade, ensuring a cohesive appearance.

What distinguishes our facade is its fluid, undulating wave design, which interacts with light, providing a luminous spectacle, particularly during daylight hours.

This accomplishment was achieved through collaboration with Kane Constructions and Clarke Hopkins Clarke Architects.

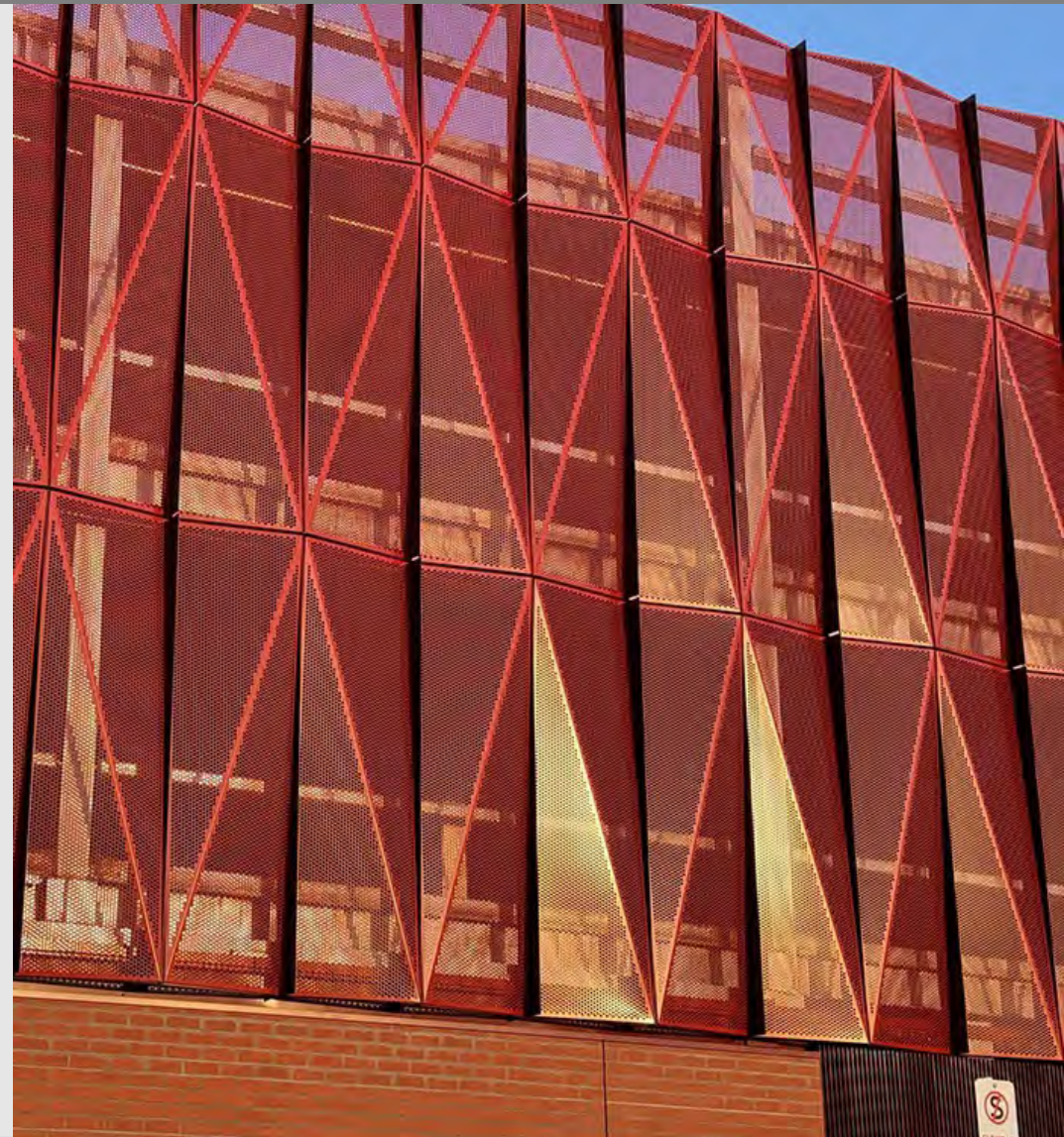
DEAKIN UNIVERSITY CAR PARK FACADE

Geelong, Victoria

PRODUCT: Perforated Metal Facade

ARCHITECT: Warren and Mahoney Architects

Webforge Locker's Perforated Metal facade played a pivotal role in the transformation of Deakin University's Waterfront Campus. Collaborating with renowned architects, WARREN AND MAHONEY, we contributed to the creation of a visually stunning and environmentally sustainable Multideck Carpark. This project aligns seamlessly with Deakin's commitment to eco-friendly practices and innovative design. The new car park not only offers much-needed parking space but also integrates seamlessly with the surrounding landscape. With features like electric vehicle charging stations, a gym, yoga studio, and an activated laneway for various events, the Multideck Carpark adds value beyond its primary function. We are proud to have been part of this transformative project, enhancing both the functionality and aesthetic appeal of Deakin University's Waterfront Campus.



HOPE STREET

Brisbane, Queensland



Product: PIC PERF®

Architect: Koichi Takada Architects

Artist: Judy Watson

Explore the intersection of art and architecture at Brisbane's Upper House, crafted by Koichi Takada Architects. Central to the project's allure is a five-story artwork by indigenous Australian artist Judy Watson, titled 'Bloodlines weaving string and water', 2023. This striking piece, utilising our Pic Perf® metal panels, embodies the essence of indigenous history and tradition. Illuminated by intricate folds and backlighting, it weaves a narrative of connection to Australia's first nations people. With each perforation engineered, our metal masterpiece serves as the canvas for Watson's profound storytelling. Witness the fusion of culture and craftsmanship as lines of light dance across our meticulously crafted panels, inviting viewers to delve into the depths of heritage and artistry. Experience the essence of Upper House, where our Pic Perf® perforated metal transforms into a symbol of cultural reverence and architectural brilliance

BELGRAVE STATION CAR PARK

Belgrave, Victoria

PRODUCT: PERFORATED METAL
ARCHITECT: Architectus
Partners: ADCO Constructions

At Belgrave Station, our AERO X perforated metal panels with flat and faceted panels have transformed the car park into a symbol of contemporary elegance. Engineered for sleekness and durability, our product creates a modern aesthetic that seamlessly integrates into the station's landscape. Our involvement spans the entire project, from design and engineering to supply and installation, ensuring a cohesive and sophisticated finish across all elevations and lift screens. Collaborating closely with ADCO Constructions and Architectus, we've delivered a seamless fusion of functionality and style, setting a new standard in architectural innovation. The completion of Belgrave Station's car park, featuring our AERO X panels, marks a milestone in redefining modernity in urban infrastructure.



SIMONE LITTLE ITALY

California, USA



Product: Aurora Perforated System
Architect: Joseph Wong Design Associates
Installer: GC Swinerton

Another triumphant Car Park project completion, Simone Little Italy. Nestled in sunny southern California, Joseph Wong Design Associates new apartments required a parking garage solution seamlessly aligned with the apartments above.

Enter our exceptional Aurora system, featuring an integrated crash barrier, effortlessly fusing functionality with aesthetic appeal.

The challenge, unifying an impressive 795 sqm of 3mm perforated panels, 302 sqm of solid backpans, 395 sqm of Kinspan light and air translucent panels and robust vehicle crash barriers all into a single cohesive system.

Guided by our dedicated Valmont, Webforge Locker team, the design strategy paved the way, delivering comprehensive engineering, fabrication, and shop drawings from one reliable source.



AURA PEDESTRIAL BRIDGE

Baringa, Queensland

Product: PIC PERF®

Partners: Queensland Government, Stockland and Shadforths Civil

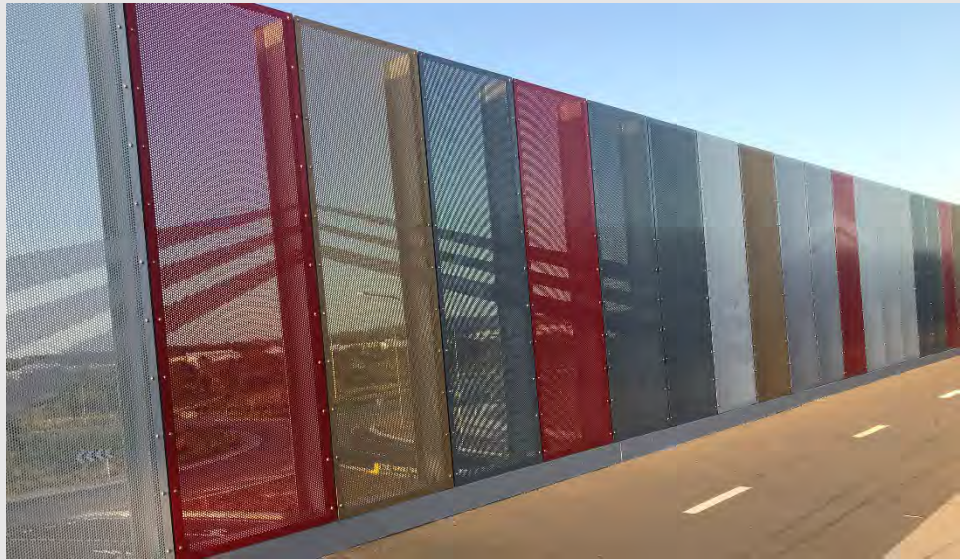
Transforming Spaces with Collaboration and Innovation!

Webforge Locker Perforated Pic Perf® metal panels for the Aura Pedestrian Bridge, partnering with Queensland Government, Stockland and Shadforths Civil.

Details: 174 panels, Material: 5mm Aluminium featuring unique Pic Perf® technology and an array of stunning Interpon colours.

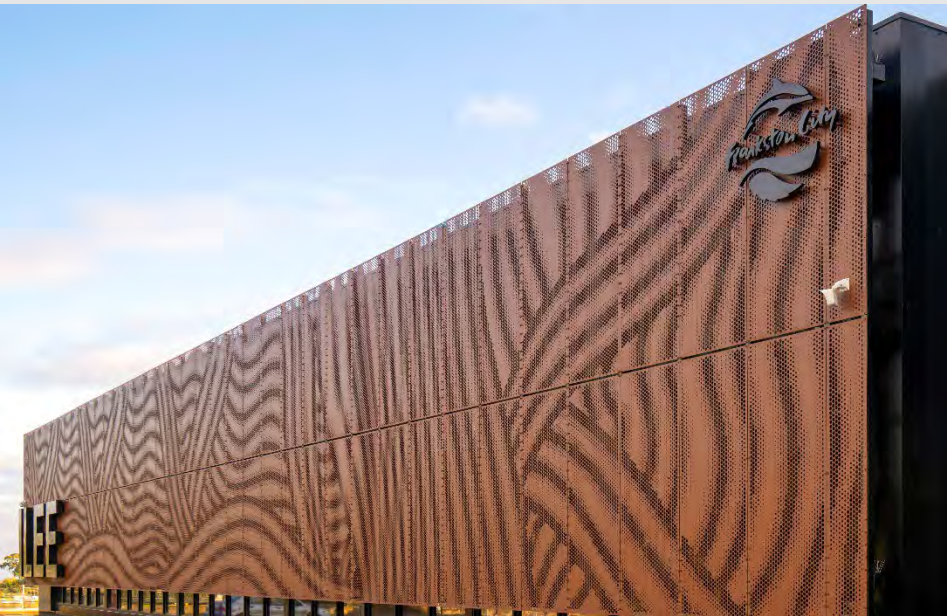
Community Connection, more than steel and design, this bridge serves as a vital link to the existing 70 km of cycling paths across Aura, ensuring safe passage for local communities.

Inspiration & Vision: Inspired by UAP Artwork, a non-climbable Pic Perf profile elegantly merges functionality with artistic expression.



JUBILEE PARK STADIUM

Frankston, Victoria



Product: PIC PERF®

Architect: Williams Ross Architects

Frankston City Council's Jubilee Park Indoor Stadium, envisioned by WRA, showcases a striking facade featuring graphic patterns inspired by Bunurong artist John Winch's designs, depicting the region's waterways. Collaborating with the Bunurong Land Council, WRA ensured these motifs weave narratives of connection and heritage into the community. The stadium serves as a hub for sports enthusiasts, boasting six competition-grade courts for netball, basketball, and volleyball, alongside a cutting-edge indoor cricket training facility. Our Pic-Perf® perforated metal, spanning approximately 1070 sqm, including a 40 sqm Pic-Perf soffit in the entry foyer, adorns the façade. Crafted from 4.00 mm Aluminium with a Dulux Duratec Elements Weathered Steel Flat 90E8340Z powder coat finish. Screens were supplied predominantly flat, with only a handful of folded screens wrapping around corners. This landmark not only elevates the sporting landscape but also honours Bunurong traditions and environmental consciousness.

Melbourne

2 Cojo Place,
Dandenong South,
VIC 3175 Australia.
ABN 99 004 353 922
Phone: 1800 635 947
Email: wlcustomerservice@valmont.com

Sydney

5 Enterprise Circuit,
Prestons,
NSW 2170 Australia.
ABN 99 004 353 922
Phone: 1800 635 947
Email: wlcustomerservice@valmont.com

Brisbane

1149 Kingsford-Smith Drive
Pinkenba,
Qld 4008 Australia.
ABN 99 004 353 922
Ph: 1800 635 947
Email: wlcustomerservice@valmont.com

Adelaide

358 Cormack Rd,
Wingfield,
SA 5013 Australia.
ABN 99 004 353 922
Phone: 1800 635 947
Email: wlcustomerservice@valmont.com

Perth

41 Austin Avenue,
Maddington,
WA 6109 Australia.
ABN 99 004 353 922
Phone: 1800 635 947
Email: wlcustomerservice@valmont.com

Townsville

671 Ingham Road
Townsville
QLD 4814 Australia
ABN 99 004 353 922
Phone: 1800 635 947
Email: wlcustomerservice@valmont.com

Auckland

12 Offenhauser Drive,
East Tamaki,
Auckland, New Zealand
Phone: 0800 285 837
+64 9 920 6825
Email: nzcustomerservice@valmont.com

Palmerston North

23 Kelvin Grove Road
Palmerston North
New Zealand 4440
Phone: 0800 285 837
+ 64 6 356 1246
Email: nzcustomerservice@valmont.com

