

flexi WALL

MODULAR SHELVING AND DISPLAY SYSTEMS
MODERNISED & SIMPLIFIED

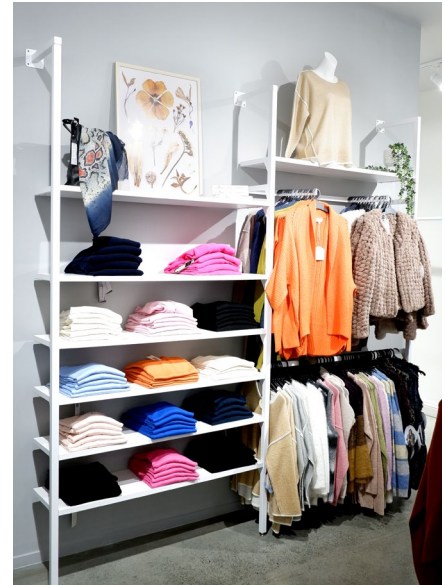


surestyle
FIXTURES | FITTINGS

40
YEARS

surestyle
FIXTURES | FITTINGS

Creating modular
presentation
systems for
inspired spaces



Surestyle is a family owned and operated business since 1975. For 40 years we have designed, manufactured, constructed and delivered modular shopfitting projects across the nation, creating spaces that inspire and engage. Surestyle makes it easy for our clients to turn their visions of presentation & organisational excellence into reality.



flexi WALL

Introducing flexiWALL, the innovative modular shelving and display system that is modernising shop fit-out design and construction.

flexiWALL is a multi-configurational, modular shelving system.

Highly versatile, modular customisability and ease of installation to suit the needs of your ever changing merchandising and product display requirements. flexiWALL gives you complete control over presentation.

Structurally supported by upright posts and rails which are either fixed to the wall or used in combination with a wall bracket, a ceiling mount or offset bar options. With flexiWALL, you can make configuration changes easily when featuring new or seasonal clothing ranges without major dismantling. Simply add, subtract and adjust in accordance to your needs in minutes.

A range of interchangeable display parts and accessories available to create endless configurations and sections and sizes. From base panels to custom shelves, shelf brackets, hanging rails and arms, infill panels (plain, slat panels or grid panel), signage, ticketing and integrated lighting, SureStyle supplies it all.

Module spacings are available in 600mm, 900mm or 1200mm and our shelves are manufactured in-house to suit your needs, available in a range of colours, thicknesses and depths.

Supplied with specification details, dimensions and customer support, flexiWALL enables quick speed-of-delivery and the flexibility that traditionally constructed and fixed shelving/display units can't.

Benefits of flexiWALL

- **Easily Customised To Suit Your Needs.** The flexiWALL system is adaptable and totally customisable to suit the design, aesthetic and specification needs of your business.
- **Countless Configurations and Design Options.** flexiWALL and flexiPLUS parts and accessories are completely interchangeable to create endless configurations, sections and customised space. Staff have flexibility to change shelving, hanging and display merchandising layouts in minutes.
- **Fast to assemble and disassemble.** Easy to construct, easy to specify into design, NZ/AU compliant and relocatable.
- **Modern, Minimalist Design.** With its clean, slimline look, flexiWALL matches any space's colour scheme and overall interior design. Ideal for retail stores, small business owners, designers, specifiers, interior designers, procurement managers, fit-out construction specialists.
- **Unmatched Customer Support.** Our talented team is available to support you with your design and display needs. Providing guidance, support and advice to help enhance your brand's presentation, drive sales and improve overall customer experience.

Want to see flexiWALL In-Person?

flexiWALL is on full display at our Auckland Showroom - 7 Moa Street, Otahuhu, Auckland, NZ.

Contact SureStyle

P 09 276 8878 or 0800 474 358

E enquiry@surestyle.co.nz

PROJECT SNAPSHOT

flexi WALL

101

HOWICK, AUCKLAND

“We carefully curate ranges of handpicked products, created by NZ designers and international brands, so you can find perfect pieces for your home and gorgeous gifts for your loved ones.”



Seeking to accentuate their designer Home & Lifestyle products, Surestyle collaborated with 101 and their design team to execute the perfect look and feel for their curated fit-out in Howick.

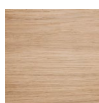
flexiWALL was the product of choice to display their high-end homewares and apparel. A bold modern look was achieved with Black flexiWALL offset bars, uprights and shelf brackets, complimented by a natural beached timber finished 4-tier shelving and custom cabinets. FlexiPLUS hanging rails were integrated for clothing on the flexiWALL system, breaking up the shelving and creating more interest.

The result was a retail store for 101 Home that exuded a refined, edgy modern elegance that is a delight for shoppers to visit and be inspired.

Colours used in this project



flexiWALL 50 in Black



Premium Oak Woodgrain Shelves



Selecting a flexiWALL colour scheme

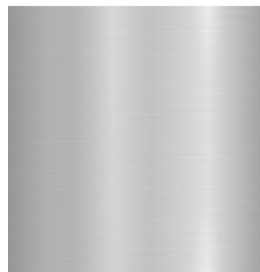
Making design decisions is easy with flexiWALL. The modular nature of the system allows you to customise the colour scheme of your presentation to align with the interior design of your space and products to be displayed. Surestyle keeps display design simple.

1. Select your preferred colour for the structural metal components (including uprights, brackets, offset bars and interchangeable accessories). Choose from three colours: black, white or chrome.
2. Next, select a shelf colour to compliment the colour of the metal components. Choose from our selection of melamine shelving in white, coloured or customised options like a natural timber melamine or veneer. Available in 600mm, 900mm or 1200mm lengths for ease of specification and installation.

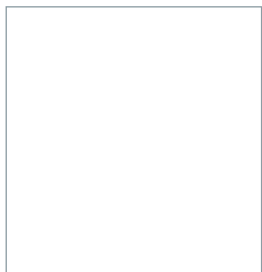
Metal Colour Options



Black

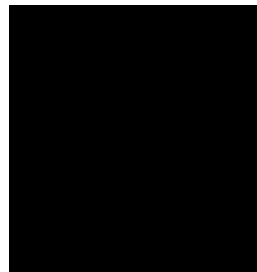


Chrome



White

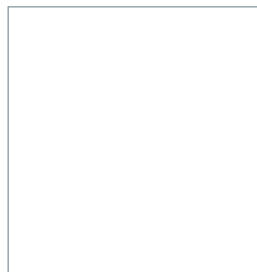
Shelf Colour Options



Black



Premium Oak Woodgrain



White



Glass

How to determine what flexiWALL components & configuration you need

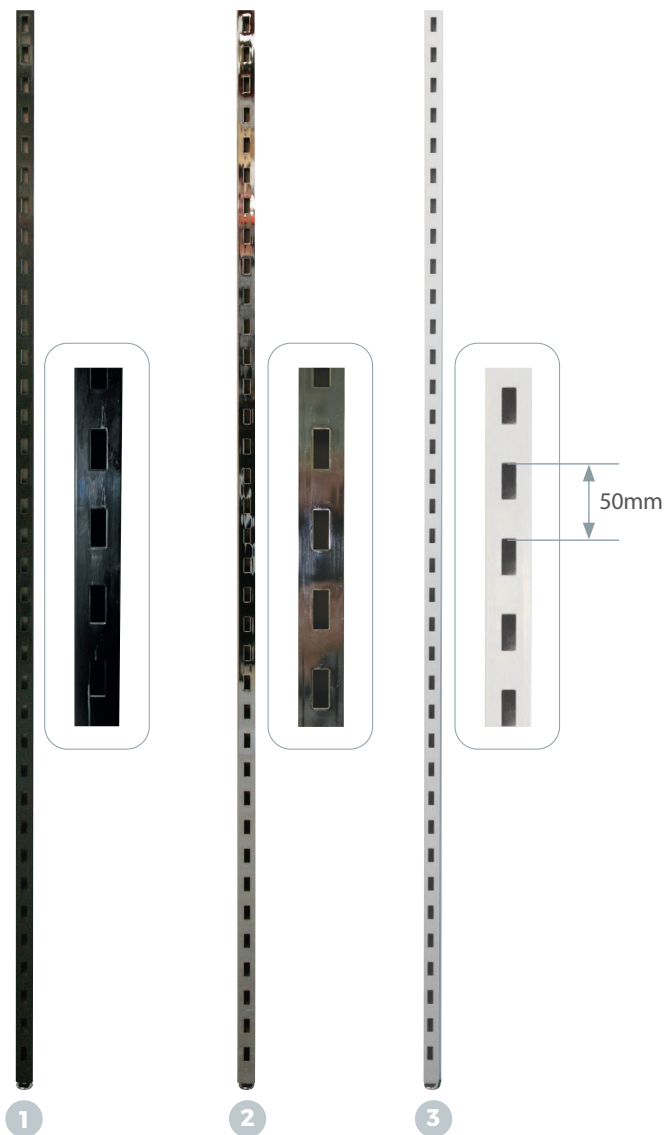
1. The first step in working out what you need is to assess the space you are working with. Determine the flexiWALL configuration you would like, either a direct wall fixing with upright wall brackets, or offset bar brackets, or the ceiling mounted option. Continue scrolling to view your options. Each configuration offers different aesthetics and functionality for customisation to your display and merchandising needs.
2. To determine the system parts and quantity you will need, we recommend contacting Surestyle. Our talented team is available to provide support, guidance and advice for your design and product needs.

Call us at 09 276 8878 or 0800 474 358, send us an email at enquiry@surestyle.co.nz, fill out a contact form on our website or visit our Auckland Showroom.

DIRECT WALL FIXING

flexi WALL

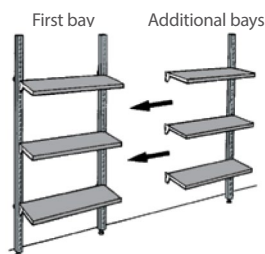
flexiWALL has been designed to adjust to your ever changing merchandising requirements. The flexiWALL system is made up of 50mm pitch (spacing measured from the top of one slot, to the top of the next slot) slotted steel uprights with a range of accessories to form a complete merchandising and display system.



flexiWALL Upright 2500mm comes complete with adjustable leveller.

The uprights are ideal for direct wall fixing or use in combination with the wall bracket, ceiling mount or offset bar options.

- 1 **FWPOSTB - 2500mm Black**
- 2 **FWPOSTC - 2500mm Chrome**
- 3 **FWPOSTW - 2500mm White**



Upright Bays

Simple steps to work out your requirements

1. Measure your wall length.
2. Divide the wall length by 600mm, 900mm or 1200mm centres to work out how many bays you require.
3. Select the components to suit your needs.

Easy installation

Posts can be directly fixed to the wall depending on your wall structure; if the wall is timber or concrete you can fix directly to the wall, however if it is a steel stud wall you will need to run two horizontal battens to fix the posts to.

Ceiling Mount Bracket

FWCBB - Black | FWCBW - White | FWCBC - Chrome

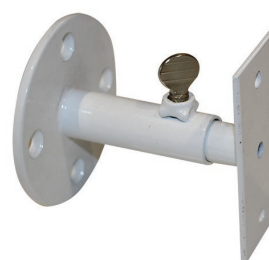
Ceiling mount suitable for all uprights, for situations where wall mounting is not available.



Upright Wall Bracket

FWUWBB - Black | FWUWBC - Chrome | FWUWBW - White

Stand-off suitable for all uprights (2 per upright required), adjustable depth for uneven walls.



DIRECT WALL FIXING PROJECT SNAPSHOTS

flexi WALL

GIRLZ ROOM

AUCKLAND

Slotting seamlessly into the client's branding and existing construction, flexiWALL was installed directly to the inside of two huge recessed walls for a variety of modular shelves of different sizes. Once installed, the merchandising team had complete control over their display needs for alignment with their products. Installed within a few hours using fixed wall uprights and complete with white shelving, cutting down construction timelines and costs.



101 HOME

HOWICK, AUCKLAND

A fixed floor-to-ceiling flexiWALL system with shelves was used for 101's new Howick store. Seeking to accentuate their designer products, bold modern aesthetics were achieved using Black flexiWALL ceiling brackets, uprights and shelf brackets, complimented by custom timber 3-tier shelving.

Surestyle collaborated with 101 and their design team to execute the perfect look and feel for their curated fit-out in Howick.

DOVE HOSPICE

NEWMARKET, AUCKLAND

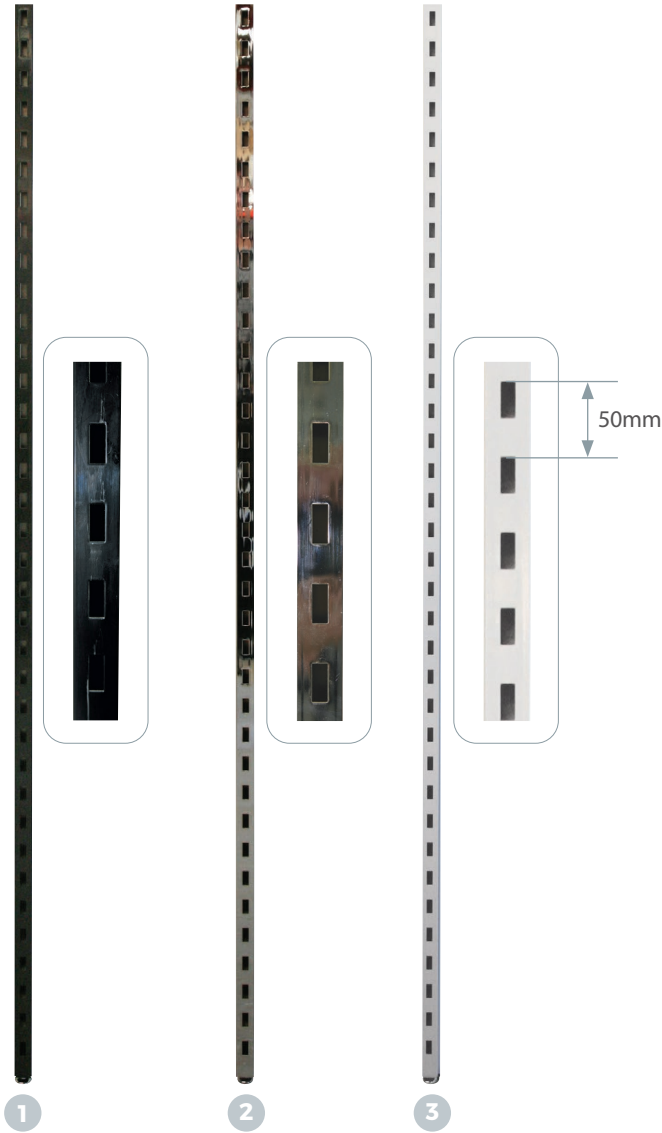
Surestyle was engaged early in the design process to integrate modular fixture and fittings to their new store at Newmarket. A fixed wall flexiWALL system with modular white shelves and SlatPanels were chosen to meet the clients needs of flexibility to modify with Surestyle's interchangeable display accessories. Along with custom solutions and bespoke joinery items, Surestyle proudly supplied all the internal fixtures for this store.



OFFSET

flexi WALL

flexiWALL has been designed to adjust to your ever changing merchandising requirements. The flexiWALL system is made up of 50mm pitch (spacing measured from the top of one slot, to the top of the next slot) slotted steel uprights with a range of accessories to form a complete merchandising and display system.



- 1 FWPOSTB - 2500mm Black
- 2 FWPOSTC - 2500mm Chrome
- 3 FWPOSTW - 2500mm White

Upright Offset Bar 355mm

FWOSBB - Black | FWOSBC - Chrome | FWOSBW - White

Fits into the top of uprights to allow for reverse merchandising or to avoid protruding obstacles.



OFFSET PROJECT SNAPSHOTS

flexi WALL

SASSYS

PONSONBY, AUCKLAND

Exuding elegance and classic beauty, Sassys' flagship store in Ponsonby was a curated masterpiece. Seeking a display system that would compliment their existing patterned feature wall, our chrome offset flexiWALL system ticked every box. Enhancing the space and making a grand statement without distracting the eye away from their products. flexiWALL was seamlessly integrated with flexiPLUS accessories including chrome hanging rails and forward arms for modifiable convenience.



ISLAND OREWA

OREWA, AUCKLAND

flexiWALL served as perfect shelving solution for displaying Island Orewa's footwear and accessories range at their flagship store. This is a thoughtfully curated fashion and lifestyle boutique store that stocks high-quality products. Searching the market for a modular system that would not take away focus from the product, the flexiWALL system ticked every box due to its ability to scale, wrap corners and deliver an ambient shopping experience. Opting for white offset bars and uprights, the flexiWALL system was finished with natural timber shelving and each shelf was custom fit with LED light strips to illuminate products.

SUPERETTE

NEWMARKET, AUCKLAND

Leading fashion retailer Superette engaged Surestyle for complete supply of their merchandising and product display systems for a revamp of their Newmarket retail store. We worked closely with Superette and shop-fitters W Gartshore Limited to transform their vision into a reality. Seeking systems that are easily modifiable, versatile and minimalist were key requirements for Superette's design requirements.

flexiWALL was selected for the perimeters of the interior and framework for custom floor gondolas. Seeking a dual-purpose solution for their huge shop front window display, FlexiPLUS provided effortless frontage and interior display in one system.



HOME LEE

AUCKLAND

In need of an ultra-modern multi-functional display system, fashion and retail brand Home Lee, engaged Surestyle for our modular flexiWALL solution. Adding sharp clean lines against the natural plywood walls and ceilings, white offset brackets and uprights were coupled with multiple hanging rails, shelving and display accessories. Complimenting the colour palette of their branding, creating spacial interest and enhancing customer experience, was possible through the extensive configurations available with the flexiWALL merchandising system.



GUIZE MENSWEAR

NEW PLYMOUTH

Working within a tight construction time frame (6 weeks during Covid-19), Guize chose SureStyle products for their inherently fast installation and delivery, modern aesthetics, stability and quality.

Seeking functionality, sleek design and optimisation of their display systems whilst retaining an open plan design. A Black Offset flexiWALL systems were configured to construct a multi-shelving solution; achieving a highly organised and tidy, uniform presentation. SureStyle provided outstanding support to ensure that all stakeholders received the information and advice they needed for successful project delivery.

"I found the team to be extremely helpful, with good product knowledge and professional to deal with. We were very happy with the look we achieved and feel our product is displayed to its maximum. The premium quality of Surestyle for us, means doing it once and doing it well." - Brett Stokell, Director of Guize NZ.



BAMBINI

WELLINGTON, NZ

Complimenting Bambini's ambient and natural design aesthetics, white offset flexiWALL systems were installed against their existing plywood feature walls. As a one-stop shop for high-quality, designer kids clothes, footwear, books and accessories; the ability to customise, and chop-and-change easily were important requirements for Bambini. As a small family-owned business, the ability to modify their merchandising displays themselves is a major advantage over other systems. Surestyle supplied over 50 different interchangeable accessories including flexiWALL hanging rails, custom shelving and baby + child timber coat hangers.

CONCEALED STRIPPING

flexi WALL



Concealed Stripping

FWCS2400

50mm pitch single slot suitable for 18mm face board 2400mm long - aluminium.

Slot is suitable for use with two fittings side by side.



flexiWALL 50 Uprights and Concealed Stripping Installation Sequence

Take three simple steps to work out your requirements.

1. Measure your required wall lengths
2. Divide your wall lengths by 600mm, 800mm or 1200mm centres to work out how many bays you require (remember you can mix and match bay widths to suit your wall lengths/requirements).
3. Choose the accessories to suit.

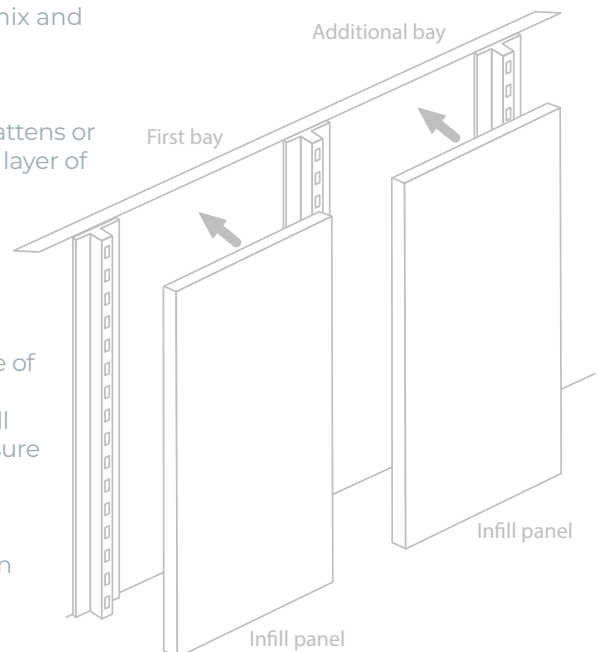
Concealed stripping can be installed either to vertical timber battens or direct fixing to existing wall structure by gluing and screwing a layer of 16mm mdf to the wall prior to installation of the stripping.

Installation sequence for Uprights and Stripping

1. Find the highest part of your floor
2. Start fitting the first stripping/upright from this position (ensure the adjustable leveller is wound right upon the uprights), this will give you the horizontal level for the balance of the stripping/uprights.
3. Install further stripping/uprights at desired bay widths with all the lengths vertically and horizontally aligned to the first. Ensure the adjustable levellers are wound down to floor level on the uprights.

For Concealed Stripping install infill panels between stripping on either split battens or directly fixed to the wall.

Note: Infill panels are available in either mdf which can be painted, white or coloured melamine or SlatPanel. For more technical installation instructions please call or email to discuss with one of our experienced installers.



GONDOLAS

flexi WALL

Gondola Panel 600mm

FWGP600B - 600mm Black
FWGP600C - 600mm Chrome
FWGP600W - 600mm White

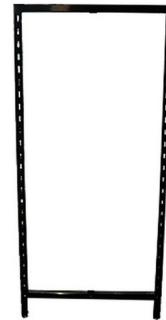
600mm (w) x 1350mm (h), single sided slots, ideal as an end panel for T or H gondolas.



Gondola Panel 900mm

FWGP900B - 900mm Black
FWGP900C - 900mm Chrome
FWGP900W - 900mm White

900mm (w) x 1350mm (h), single sided slots, ideal as an end panel for an T or H gondola.



Gondola Panel 1200mm

FWGP1200B - 1200mm Black
FWGP1200C - 1200mm Chrome
FWGP1200W - 1200mm White

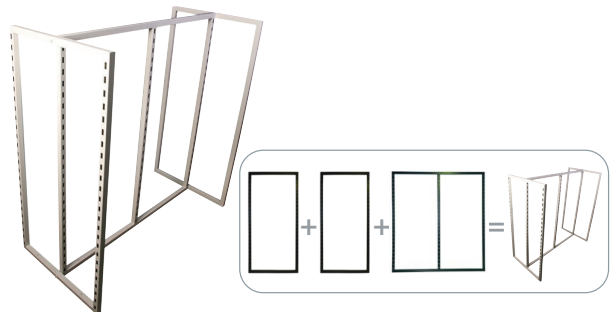
1200mm (w) x 1350mm (h), fits both 600mm and 1200mm fittings, double sided slots - can be used as a centre or end panel.



Gondola H Complete

FWGH6X12B - 600mm (w) x 1200mm (l) Black
FWGH6X12C - 600mm (w) x 1200mm (l) Chrome
FWGH6X12W - 600mm (w) x 1200mm (l) White

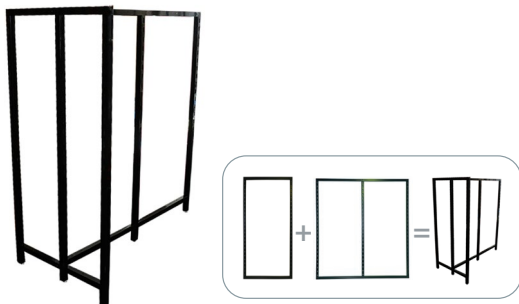
Other size combinations of the gondola panels are possible, plain or SlatPanel in-fill panels are available on request.



Gondola T Complete

FWGT6X12B - 600mm (w) x 1200mm (l) Black
FWGT6X12C - 600mm (w) x 1200mm (l) Chrome
FWGT6X12W - 600mm (w) x 1200mm (l) White

Other size combinations of the gondola panels are possible, plain or SlatPanel in-fill panels are available on request.



- Add Gondola infill panels to enhance your gondola
- Slatpanel for hangsell products
- Coloured or wood grain panels to suit your brand
- Signage panels to enhance your brand
- Custom panels to create a new look and feel

See pages 13 - 16 for Accessories & Shelves

HANG RAILS

flexi WALL

All rails 12.7mm x 38mm tube.

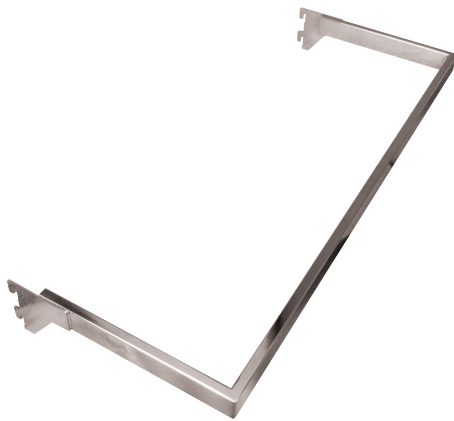
Side Hang Rail 300mm deep

FWSH600C - 600mm Chrome
FWSH600BK - 600mm Black
FWSH600WH - 600mm White

FWSH900C - 900mm Chrome
FWSH900BK - 900mm Black
FWSH900WH - 900mm White

FWSH1200C - 1200mm Chrome
FWSH1200BK - 1200mm Black
FWSH1200WH - 1200mm White

For side hang merchandising.



Front Hang Rail 50mm deep

FWFH600C - 600mm Chrome
FWFH600BK - 600mm Black
FWFH600WH - 600mm White

FWFH900C - 900mm Chrome
FWFH900BK - 900mm Black
FWFH900WH - 900mm White

FWFH1200C - 1200mm Chrome
FWFH1200BK - 1200mm Black
FWFH1200WH - 1200mm White

For front hang rail accessories, or "U" rails.



Side Hang Clip On "U" Rail

FWSHU600C - 600mm (w) x 270mm (d) Chrome
FWSHU600BK - 600mm (w) x 270mm (d) Black
FWSHU600WK - 600mm (w) x 270mm (d) White

Use in combination with a front hang rail to allow for side hanging and front hanging within one bay.



HANG RAIL ACCESSORIES

flexi WALL

Chrome & Satin Chrome - Suitable for use with 12.7mm wide tube.

Prong Hook 6mm diameter wire

FWPH100 - 100mm Chrome/Black/White
FWPH150 - 150mm Chrome/Black/White
FWPH200 - 200mm Chrome/Black/White
FWPH250 - 250mm Chrome/Black/White

Fits all hang rails, ideal for hang sell applications.
Available in both chrome and satin chrome



Face Forward Arm

FWFFA350C - 350mm Chrome
FWFFA350BK - 350mm Black
FWFFA350WK - 350mm White

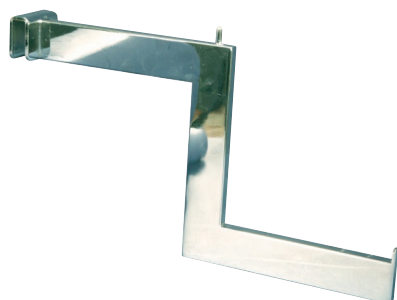
Fits all hang rails, ideal for front hang merchandising.



Stepped Arm

FWSTA400C - 400mm Chrome
FWSTA400BK - 400mm Black
FWSTA400WH - 400mm White

Ideal for two level merchandising, fits all hang rails.



Waterfall Arm 6 Pin

FW6WC - 345mm Chrome
FW6WBK - 345mm Black
FW6WWH - 345mm White

Fits all hang rails 345mm long, ideal for varied height merchandising.



Ball Holder

FWBHC - 300mm Chrome
FWBHBK - 300mm Black
FWBHWH - 300mm White

Fits all hang rails, 300mm long, 150mm diameter ring, suitable for most types of sports balls.



Hat Hook

FWHHC - Chrome
FWHHBK - Black
FWHHWH - White

Fits all hang rails, 200mm long, 100mm diameter ring.



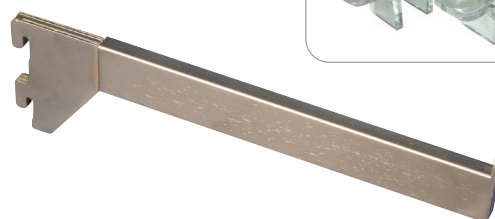
Straight Arm Chrome 300mm for Uprights

FWSA300C - Chrome

Fits directly into wall upright, can be used as a forward arm or shelf bracket.

FWSBSCS - Shelf Bracket Clip Single
FWSBSCD - Shelf Bracket Clip Double

Shelf bracket clips for 12.7mm tube.



SHELF BRACKETS

flexi WALL

Shelf Brackets 18mm pair

FWSB18X300L/RC - 300mm Chrome
 FWSB18X300L/RBK - 300mm Black
 FWSB18X300L/RWH - 300mm White

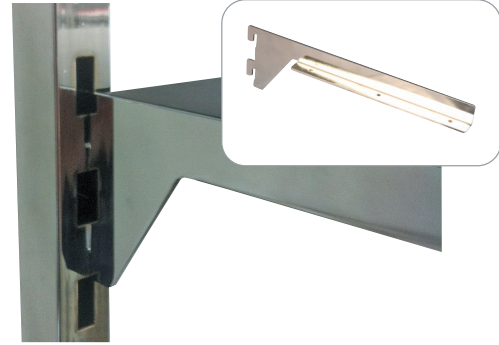
Left and right shelf brackets 300mm suits 18mm thickness shelf.



Shelf Bracket 25mm pair

FWSB300L/RC - 300mm Chrome
 FWSB300L/RBK - 300mm Black
 FWSB300L/RWH - 300mm White

Left and right shelf brackets 300mm suits 25mm thickness shelf.



Shelf Bracket 300mm Top Mount Pair

FWSBT300L/RC - 300mm Chrome
 FWSB300L/RBK - 300mm Black
 FWSB300L/RWH - 300mm White

Left and right shelf brackets 300mm suits 16/18/25mm thickness shelf.



Sloping Shelf Brackets 300mm Pair

FWSSBC - 300mm Chrome
 FWSSBBK - 300mm Black
 FWSSBWH - 300mm White

Left and right sloping shelf brackets 300mm. Ideal for use with a shelf with front lip.



Black Shelf for flexiWALL or flexiPLUS

FS25X12B - 25mm x 300mm x 1200mm
 FS25X9B - 25mm x 300mm x 900mm
 FS25X6B - 25mm x 300mm x 600mm



White Shelf for flexiWALL or flexiPLUS

FS25X6W - 25mm x 300mm x 600mm
 FS25X9W - 25mm x 300mm x 900mm
 FS25X12W - 25mm x 300mm x 1200mm

Includes 2mm ABS edging to the front + back edges.



Premium Oak Woodgrain Shelf for flexiWALL or Flexiplus

FS25X6P - 25mm x 300mm x 600mm
 FS25X9P - 25mm x 300mm x 900mm
 FS25X12P - 25mm x 300mm x 1200mm



WALL SYSTEMS

SHELVING

flexi WALL

.....
Glass shelves can also be used with the new top gondola brackets to enhance your gondola displays. See page XX
.....

Glass Shelves

3GSH301G - 592mm (w) x 300mm (d)

3GSH302G - 892mm (w) x 300mm (d)

3GSH303G - 1192mm (w) x 300mm (d)

3GSH401G - 592mm (w) x 350mm (d)

3GSH402G - 892mm (w) x 350mm (d)

3GSH403G - 1192mm (w) x 350mm (d)



To suit oval bar shelf rails + shelf rails with hang rail.

flexiWALL 50 Glass Shelf Bracket and Rails

FWGSBR300X600WH - 300mm x 600 White

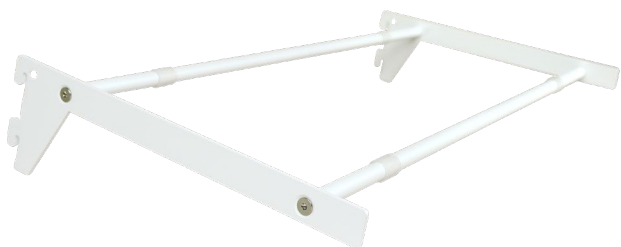
FWGSBR300X900WH - 300mm x 900 White

FWGSBR300X1200WH - 300mm x 1200 White

FWGSBR300X600BK - 300mm x 600 Black

FWGSBR300X900BK - 300mm x 900 Black

FWGSBR300X1200BK - 300mm x 1200 Black



PRODUCT LIST

Flexi Shelf Brackets and Supports

CODE	DESCRIPTION
FSP1800BK	Flexi Forward Support Pressing 1800mm Black
FSP1800WH	Flexi Forward Support Pressing 1800mm White
FSP1200BK	Flexi Forward Support Pressing 1200mm Black
FSP1200WH	Flexi Forward Support Pressing 1200mm White
FSP900BK	Flexi Forward Support Pressing 900mm Black
FSP900WH	Flexi Forward Support Pressing 900mm White
FSP600BK	Flexi Forward Support Pressing 600mm Black
FSP600WH	Flexi Forward Support Pressing 600mm White
FOSB400BK	Flexi Offset Shelf Bracket 400mm pair Black
FOSB400WH	Flexi Offset Shelf Bracket 400mm pair White
FOSB300BK	Flexi Offset Shelf Bracket 300mm pair Black
FOSB300WH	Flexi Offset Shelf Bracket 300mm pair White
FCHSBBK	Flexi Centre Hang Shelf Bracket pair Black
FCHSBWH	Flexi Centre Hang Shelf Bracket pair White
FCHRGSI200BK	Flexi Centre Hangrail Shelf Bracket 1200mm Black
FCHRGSI200WH	Flexi Centre Hangrail Shelf Bracket 1200mm White
FCHRGSI900BK	Flexi Centre Hangrail Shelf Bracket 900mm Black
FCHRGSI900WH	Flexi Centre Hangrail Shelf Bracket 900mm White
FCHRGSI600BK	Flexi Centre Hangrail Shelf Bracket 600mm Black
FCHRGSI600WH	Flexi Centre Hangrail Shelf Bracket 600mm White
FOSBHR400BK	Flexi Offset Shelf Bracket w/ Hangrail attachment 400mm pair Black
FOSBHR400WH	Flexi Offset Shelf Bracket w/ Hangrail attachment 400mm pair White
FCHSBTBK	Flexi Centre Hang Shelf Bracket Top mount pair Black
FCHSBTWH	Flexi Centre Hang Shelf Bracket Top mount pair White
FOSSB488BK	Flexi Offset Sloping Shelf Bracket 488mm pair Black
FOSSB488WH	Flexi Offset Sloping Shelf Bracket 488mm pair White
FOSSB266BK	Flexi Offset Sloping Shelf Bracket 266mm pair Black
FOSSB266WH	Flexi Offset Sloping Shelf Bracket 266mm pair White
FORSSB388BK	Flexi Offset Reversed Sloping Shelf Bracket 388mm pair Black
FORSSB388WH	Flexi Offset Reversed Sloping Shelf Bracket 388mm pair White
FORSB300BK	Flexi Offset Reversed Shelf Bracket 300mm pair Black
FORSB300WH	Flexi Offset Reversed Shelf Bracket 300mm pair White
FORSBT300BK	Flexi Offset Reversed Shelf Bracket Top Mount 300mm pair Black
FORSBT300WH	Flexi Offset Reversed Shelf Bracket Top Mount 300mm pair White

PRODUCT LIST

flexi WALL

flexiWALL Floor Gondola Panels

CODE	DESCRIPTION
FWGH6X12B	flexiWALL Gondola H Frame High Base 600mm x 1200mm Black
FWGP1200B	flexiWALL Gondola Panel 1200mm High Base Rail Black
FWGP600B	flexiWALL Gondola Panel 600mm High Base Rail Black
FWGP1200W	flexiWALL Gondola Panel 1200mm High Base Rail White
FWGP600W	flexiWALL Gondola Panel 600mm High Base Rail White
FWGP900W	flexiWALL Gondola Panel 900mm High Base Rail White
FWGT6X12B	FlexiWall Gondola T Frame High Base 600mm x 1200mm Black
FWGT9X12W	flexiWALL Gondola T Frame High Base 900mm x 1200mm White
FWGT6X12W	flexiWALL Gondola T Frame High Base 600mm x 1200mm White
FWGH6X12W	flexiWALL Gondola H Frame High Base 600mm x 1200mm White
FWGH9X12W	flexiWALL Gondola H Frame High Base 900mm x 1200mm White
FWGP900B	flexiWALL Gondola Panel 900mm High Base Rail Black
FWGH9X12B	flexiWALL Gondola H Frame High Base 900mm x 1200mm Black

flexiWALL Hang Rails

CODE	DESCRIPTION
FSHR1200BK	Flexi Shelf Hang Rail 1200mm Black
FSHR1200WH	Flexi Shelf Hang Rail 1200mm White
FSHR900BK	Flexi Shelf Hang Rail 900mm Black
FSHR900WH	Flexi Shelf Hang Rail 900mm White
FSHR600BK	Flexi Shelf Hang Rail 600mm Black
FSHR600WH	Flexi Shelf Hang Rail 600mm White
FWFH600C	flexiWALL 50 Front Hang Rail 600mm Chrome
FWSH1200C	flexiWALL 50 Side Hang Rail 1200mm Chrome
FWSH600C	flexiWALL 50 Side Hang Rail 600mm Chrome
FWFH1200C	flexiWALL 50 Front Hang Rail 1200mm Chrome
FWSH600WH	flexiWALL 50 Side Hang Rail 600mm White
FWSHU600WH	flexiWALL Clip-On Side Hang Rail 600mm White
FWSHU600BK	flexiWALL Clip-On Side Hang Rail 600mm Black
FWSHU600C	flexiWALL Clip-On Side Hang Rail 600mm Chrome
FWFH900C	flexiWALL 50 Front Hang Rail 900mm Chrome
FWSH900C	flexiWALL 50 Side Hang Rail 900mm Chrome

PRODUCT LIST

flexiWALL Hang Rails *(Continued)*

CODE	DESCRIPTION
FWSH900BK	flexiWALL 50 Side Hang Rail 900mm Black
FWFH900BK	flexiWALL 50 Front Hang Rail 900mm Black
FWTCAPCH	flexiWALL Tube End Cap Chrome
FWCH1200BK	flexiWALL 50 Centre Hang Rail 1200mm Black
FWCH1200WH	flexiWALL 50 Centre Hang Rail 1200mm White
FWFH1200BK	flexiWALL 50 Front Hang Rail 1200mm Black
FWFH1200WH	flexiWALL 50 Front Hang Rail 1200mm White
FWFH900WH	flexiWALL 50 Front Hang Rail 900mm White
FWFH600BK	flexiWALL 50 Front Hang Rail 600mm Black
FWSH600BK	flexiWALL 50 Side Hang Rail 600mm Black
FWSH1200BK	flexiWALL 50 Side Hang Rail 1200mm Black
FWSH1200WH	flexiWALL 50 Side Hang Rail 1200mm White
FWSH900WH	flexiWALL 50 Side Hang Rail 900mm White
FWCH900WH	flexiWALL 50 Centre Hang Rail 900mm White
FWFH600WH	flexiWALL 50 Front Hang Rail 600mm White
FWCH600BK	flexiWALL 50 Centre Hang Rail 600mm Black
FWCH600WH	flexiWALL 50 Centre Hang Rail 600mm White
FWCH900BK	flexiWALL 50 Centre Hang Rail 900mm Black

flexiWALL Shelf Brackets

CODE	DESCRIPTION
FWPBC	flexiWALL Panel Brackets Left and Right pair Chrome
FWSA300C	flexiWALL 50 Straight Arm 300mm Chrome
FWSB300L/RC	flexiWALL 50 Shelf Brackets 25mm x 300mm pair Chrome
FWSBT300L/RC	flexiWALL 50 Top Mount Shelf Brackets pair Chrome
FWSSBC	flexiWALL 50 Sloping Shelf Brackets pair Chrome
FWSB18X300L/RWH	flexiWALL 50 Shelf Brackets 18mm x 300mm pair White
FWSBT300L/RBK	flexiWALL 50 Top Mount Shelf Brackets pair Black
FWSB18X300L/RC	flexiWALL 50 Shelf Brackets 18mm x 300mm pair Chrome
FWSB18X300L/RBK	flexiWALL 50 Shelf Brackets 18mm x 300mm pair Black
FWSB300L/RWH	flexiWALL 50 Shelf Brackets 25mm x 300mm pair White
FWSB300L/RBK	flexiWALL 50 Shelf Brackets 25mm x 300mm pair Black

PRODUCT LIST

flexi WALL

flexiWALL Shelf Brackets *(Continued)*

CODE	DESCRIPTION
FWSSBBK	flexiWALL 50 Sloping Shelf Brackets pair Black
FWSB18X150L/RBK	flexiWALL 50 Shelf Brackets 18mm x 150mm pair Black
FWSB18X150L/RWH	flexiWALL 50 Shelf Brackets 18mm x 150mm pair White
FWSB400L/RBK	flexiWALL 50 Shelf Brackets 25mm x 400mm pair Black
FWGSR12B	flexiWALL Glass Support Rails Black Pair
FWGSR300X600WH	flexiWALL 50 Glass Shelf Brackets and Rails 300mm x 600 White
FWGSR300X900WH	flexiWALL 50 Glass Shelf Brackets and Rails 300mm x 900 White
FWGSR300X1200WH	flexiWALL 50 Glass Shelf Brackets and Rails 300mm x 1200 White
FWGSR300X600BK	flexiWALL 50 Glass Shelf Brackets and Rails 300mm x 600 Black
FWGSR300X900BK	flexiWALL 50 Glass Shelf Brackets and Rails 300mm x 900 Black
FWGSR300X1200BK	flexiWALL 50 Glass Shelf Brackets and Rails 300mm x 1200 Black
FWSBT300L/RWH	flexiWALL 50 Top Mount Shelf Brackets pair White
FWSSBWH	flexiWALL 50 Sloping Shelf Brackets pair White

flexiWALL Posts and Accessories

CODE	DESCRIPTION
FWCBB	flexiWALL Ceiling Bracket Black
FWCBC	flexiWALL Ceiling Bracket Chrome
FWCS2400	flexiWALL Concealed Stripping 2400mm Alu
FWOSBB	flexiWALL Offset Bar 355mm Black
FWOSBC	flexiWALL Offset Bar 355mm Chrome
FWPOSTB	flexiWALL Upright Post 2500mm Black
FWPOSTC	flexiWALL Upright Post 2500mm Chrome
FWPOSTW	flexiWALL Upright Post 2500mm White
FWCBW	flexiWALL Ceiling Bracket White
FWOSBW	flexiWALL Offset Bar 355mm White
FWCB100BK	flexiWALL Ceiling Bracket 150mm Length Black

flexiWALL Hang Rail Accessories

CODE	DESCRIPTION
FWPBC	flexiWALL Panel Brackets Left and Right pair Chrome
FWSA300C	flexiWALL 50 Straight Arm 300mm Chrome

PRODUCT LIST

flexiWALL Hang Rail Accessories *(Continued)*

CODE	DESCRIPTION
FW6WC	flexiWALL Waterfall Arm 6 Pin Chrome
FWHHC	flexiWALL Hat Holder Chrome
FWPH200C	flexiWALL Prong Hook 200mm Chrome
FWSTA400C	flexiWALL Stepped Arm 400mm Chrome
FWFFA350C	flexiWALL Face Forward Arm 350mm Chrome
FWSBCS	flexiWALL 50 Shelf Bracket Clip Single
FWSBCD	flexiWALL 50 Shelf Bracket Clip Double
FWPH150C	flexiWALL Prong Hook 150mm Chrome
FWPH250C	flexiWALL Prong Hook 250mm Chrome
FWSFA350BK	flexiWALL Square Face Forward Arm 350mm Black
FWPH200BK	flexiWALL Prong Hook 200mm Black
FWDSA500BK	flexiWALL Double Sided Arm 2 @ 250mm Black
FWFFA350BK	flexiWALL Face Forward Arm 350mm Black
FWDSA500WH	flexiWALL Double Sided Arm 2 @ 250mm White
FWSTA400BK	flexiWALL Stepped Arm 400mm Black
FW6WBK	flexiWALL Waterfall Arm 6 Pin 350mm Black
FWFFA350WH	flexiWALL Face Forward Arm 350mm White
FWPH200WH	flexiWALL Prong Hook 200mm White
FWSTA400WH	flexiWALL Stepped Arm 400mm White
FWPH100WH	flexiWALL Prong Hook 100mm White
FWPH150WH	flexiWALL Prong Hook 150mm White
FWBHB	flexiWALL Ball Holder 150mm dia Matt Black
FWPH250B	flexiWALL Prong Hook 250mm Black
FWPH250WH	flexiWALL Prong Hook 250mm White
FW6WWH	flexiWALL Waterfall Arm 6 Pin 350mm White

Shelf for flexiWALL

CODE	DESCRIPTION
FS25X12B	Shelf for flexiWALL or Flexiplus 25mm x 300mm x 1200mm Black
FS25X9B	Shelf for flexiWALL or Flexiplus 25mm x 300mm x 900mm Black
FS25X6B	Shelf for flexiWALL or Flexiplus 25mm x 300mm x 600mm Black
FS25X12P	Shelf for flexiWALL or Flexiplus 25mm x 300mm x 1200mm Premium Oak Woodgrain

PRODUCT LIST

flexi WALL

Shelf for flexiWALL *(Continued)*

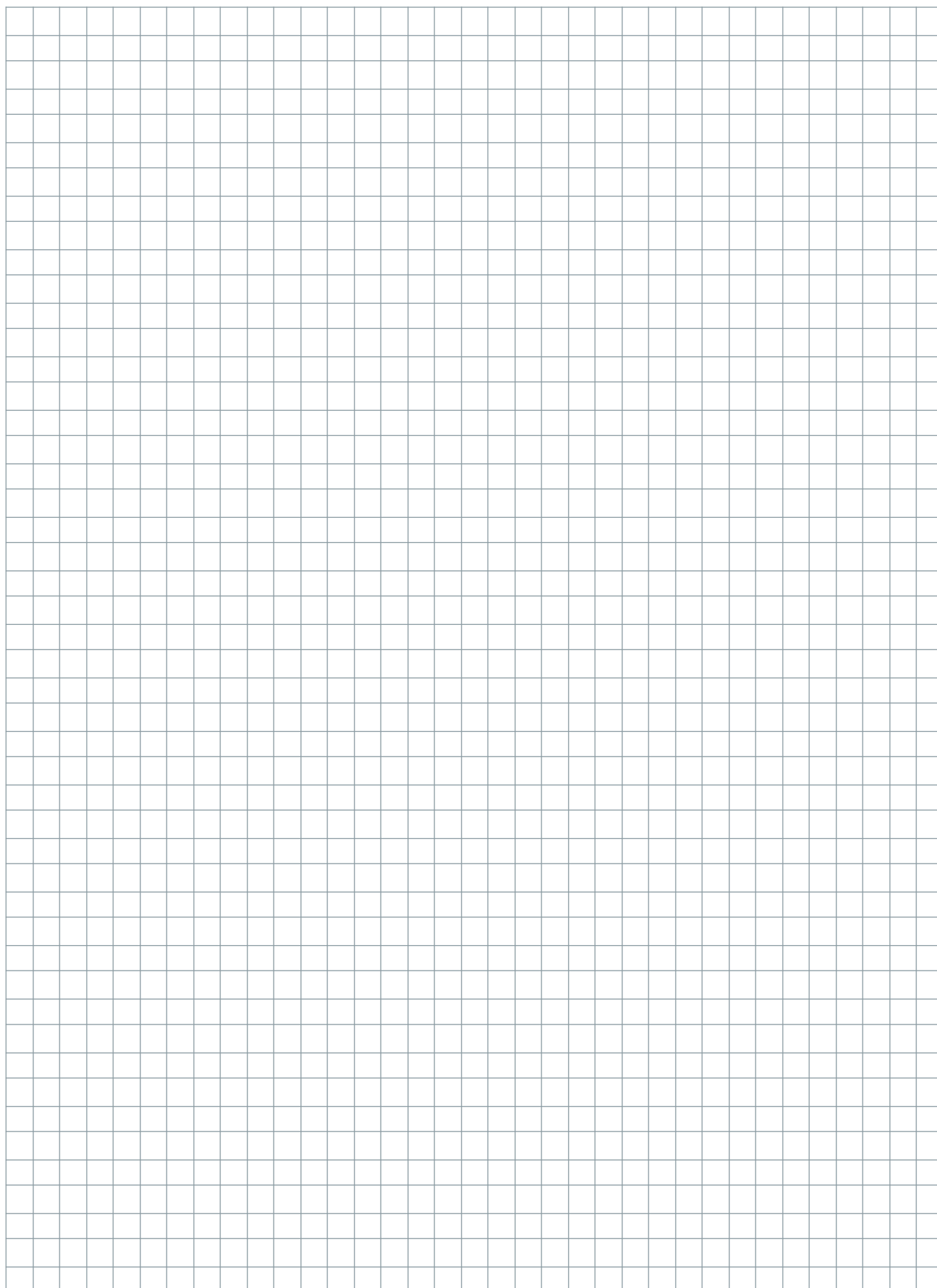
CODE	DESCRIPTION
FS25X12W	Shelf for flexiWALL or Flexiplus 25mm x 300mm x 1200mm White
FS25X6W	Shelf for flexiWALL or Flexiplus 25mm x 300mm x 600mm White
FS25X6P	Shelf for flexiWALL or Flexiplus 25mm x 300mm x 600mm Premium Oak Woodgrain
FS25X9P	Shelf for flexiWALL or Flexiplus 25mm x 300mm x 900mm Premium Oak Woodgrain
FS25X9W	Shelf for flexiWALL or Flexiplus 25mm x 300mm x 900mm White
FWOS25X12B	Shelf for flexiWALL offset bar w/ notches 25mm x 400mm x 1200mm Black
FWOS25X12P	Shelf flexiWALL offset bar w/notches 25mm x 400mm x 1200mm Premium Oak Woodgrain
FWOS25X12W	Shelf for flexiWALL offset bar w/ notches 25mm x 400mm x 1200mm White
FWOS25X9B	Shelf for flexiWALL offset bar w/ notches 25mm x 400mm x 900mm Black
FWOS25X9P	Shelf flexiWALL offset bar w/ notches 25mm x 400mm x 900mm Premium Oak Woodgrain
FWOS25X9W	Shelf for flexiWALL offset bar w/ notches 25mm x 400mm x 900mm White
FWOS25X6B	Shelf for flexiWALL offset bar w/ notches 25mm x 400mm x 600mm Black
FWOS25X6P	Shelf flexiWALL offset bar w/notches 25mm x 400mm x 600mm Premium Oak Woodgrain
FWOS25X6W	Shelf for flexiWALL offset bar w/ notches 25mm x 400mm x 600mm White

flexiWALL 25 Hang Rails

CODE	DESCRIPTION
FW25FH915SC	FlexiWALL 25 Front Hang Rail 3 pce 915mm Satin Chrome
FW25SH915SC	FlexiWALL 25 Side Hang Rail 915mm Satin Chrome
FW25HR2400C	FlexiWALL 25 Hang Rail Tube 25mm x 2400mm Chrome
FW25HRB300SC	FlexiWALL 25 Hang Rail Bracket 3 Lug 300mm Satin Chrome
FW25HRB300GR	FlexiWALL 25 Hang Rail Bracket 3 Lug 300mm PC Grey

PROJECT PLANNING & IDEAS SET

flexi WALL



surestyle

Visit surestyle.co.nz for more inspiration

P 0800 474 358

Showroom 7 Moa Street, Otahuhu, Auckland 1062

www.surestyle.co.nz

 [surestyle_nz](https://www.pinterest.com/surestyle_nz)

 [surestylenz](https://www.instagram.com/surestylenz)

 [surestyle](https://www.facebook.com/surestyle)

 [surestyle](https://www.linkedin.com/company/surestyle)