

Designer Plunge pools

Welcome to Designer Plunge pools where you *can swim sooner* and *chose your own size and accessories*.

This is a step-by-step price list to allow you to configure your stainless steel plunge pool and accessories.

Pools are manufactured by ourselves at our Sydney based facility from marine grade 316 stainless steel and engineered certified to Australian standards.

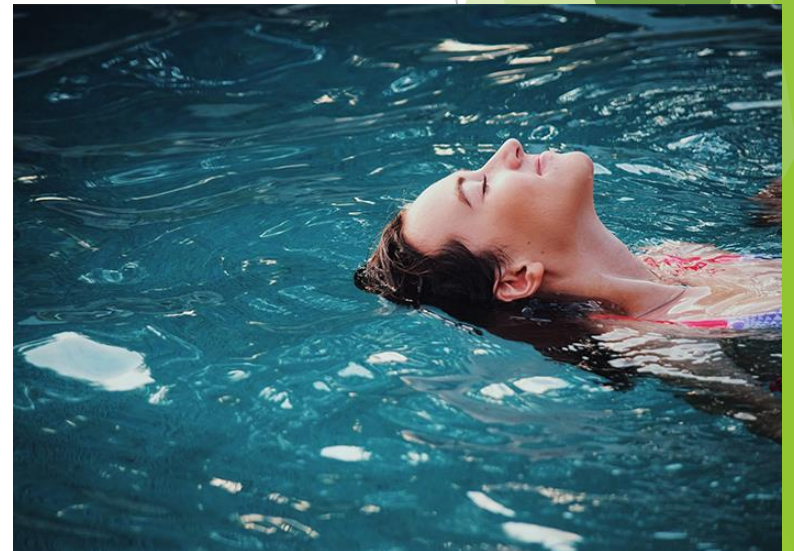
With reinforced welding and sturdy welded top rail your pool will be a safe and enjoyable addition to your back yard for years to come

Pools are delivered as a finished product ready to fill with water and enjoy.

An elegant and stylish solution at the fraction of the cost.... ***Built for you to fit your space.***

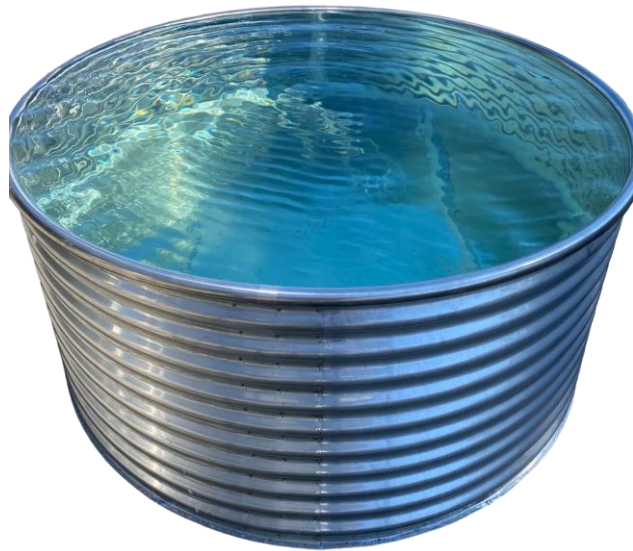
sales@designertanks.com.au

PH: 4605 0635



INCLUDED in our ready to swim package

- ✓ 316 stainless steel pool (see sizes next page)
- ✓ Astral fresh water high efficiency equipment package



316 STAINLESS POOL



XC 320PC pump



XC 100 Filter



UV sterilisation 55W



Cleaning / test pack



Package Pricing / Sizing.

- ✓ Select your pool size (*price is for ready to swim package*)
- ✓ Height options to match your desired deck heights / outlook
- ✓ Diameters to maximise your swimming area.

| | Diameter (mm) | | | | | | | | |
|-------------|---------------|----------|----------|----------|----------|----------|----------|----------|----------|
| Height (mm) | 1800 | 2000 | 2200 | 2400 | 2600 | 2800 | 3000 | 3200 | 3400 |
| 690 | | | | | | | | | |
| 765 | \$9,590 | \$9,890 | \$10,190 | \$10,490 | \$10,790 | \$11,090 | \$11,390 | \$11,690 | \$11,990 |
| 840 | | | | | | | | | |
| | | | | | | | | | |
| 1220 | | | | | | | | | |
| 1300 | \$10,590 | \$10,890 | \$11,190 | \$11,490 | \$11,790 | \$12,090 | \$12,390 | \$12,690 | \$12,990 |
| 1370 | | | | | | | | | |
| | | | | | | | | | |
| 1450 | | | | | | | | | |
| 1525 | \$11,590 | \$11,890 | \$12,190 | \$12,490 | \$12,790 | \$13,090 | \$13,390 | \$13,690 | \$13,990 |
| 1600 | | | | | | | | | |

Seats and Tables

- ✓ Tables and seats you can move around your pool
- ✓ Seats manufactured 600mm below pool height for chest high water level
- ✓ Tables level with pool height
- ✓ Easily lifted out when you want maximum swimming space
- ✓ 316 stainless steel



Pod seat.

\$599



Jelly bean seat.

\$1299



Pod table

\$699



Side mount table.

\$399

Steps and ladders

- ✓ Plan on how you will exit your pool
- ✓ Removable swim out platform (300mm below water line)
- ✓ Deck mounted ladders for easier climbing out.



Swim out platform.

\$1399



Deck Mount ladder.

\$1470

Pool light

- ✓ *Bring your pool to life*
- ✓ *Create a multicolour experience*
- ✓ *Quality spa electrics with 3 yr. warranty*



EMF Multicolour Light

\$730



**Halo 2 Bluetooth controller
(control light via Bluetooth)**

\$375

Heaters

- ✓ *Efficient Inverter technology*
- ✓ *WI FI included. Turn on from anywhere*
- ✓ *Latest technology from Astral*

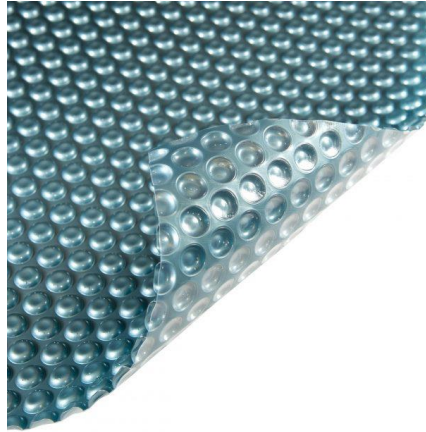


Viron Inverter Heat pump

- 9kw. \$5500 (10amp plug)

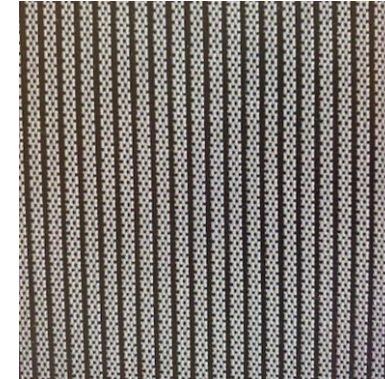
Covers

- ✓ *Thermal warms your pool*
- ✓ *Winterclean keeps leaves and debris out*
- ✓ *Note not classed as lockage covers*



Daisy Thermal cover.

\$370



Daisy WinterKleen

\$575

Delivery

- ✓ In most cases the pool can be rolled / carried into position.
- ✓ Our service provides two crew to assist in getting pool into position
- ✓ For difficult sites we will request you to provide able bodies persons to assist
- ✓ If a crane is required we will assist with strapping and slings. Crane at owners cost
- ✓ The height of the pool is the width when rolling so use this measurement to check access

NSW Delivery = \$3 per KM from Smeaton grange 2567

Other states available = Price on application



Pool base

- ✓ Pool requires a minimum 100mm thick concrete slab
- ✓ Imperfections in slab will show in floor of pool
- ✓ Slab to be prepared before pool arrival
- ✓ Base failure voids warranty



Compliance

- ✓ Check with your local council regarding approvals required
- ✓ Will require pool fencing to Australian standard AS1926.1
- ✓ Generally a DA or complying development is required
- ✓ Owners responsibility and cost for this aspect of the project

