

Good things come in *threes*.

Subscribe to our Tri-annual Print Publication



THE
LOCAL PROJECT



PRINT | ARCHITECTURE & INTERIORS | DESIGN | VIDEOS | PROFILES | GALLERIES | NEWS | MARKETPLACE | INFORMATION



< BACK TO DESIGN

A Pop of Colour – Fermob

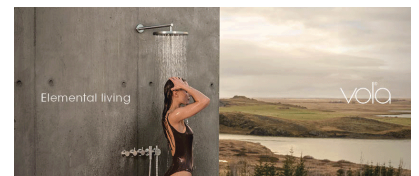
AUSTRALIA

PHOTOGRAPHY
Aurelie Lecuyer

WORDS
Linus Tan

Good things come in *threes*.

Subscribe to our Tri-annual Print Publication



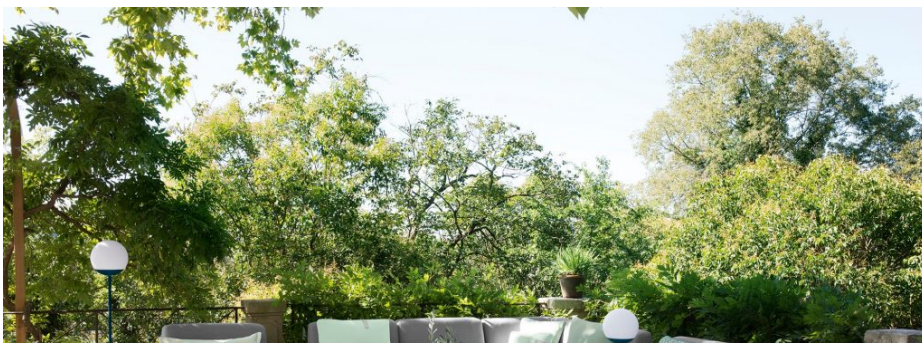
TRENDING



Textually Timeless – Sand Castle
by Luigi Rosselli Architects,
Raffaello Rosselli Architect and
[READ MORE](#)



Architecture with Attitude –
Carlotta Residence by Matthew
Woodward Architecture and
[READ MORE](#)



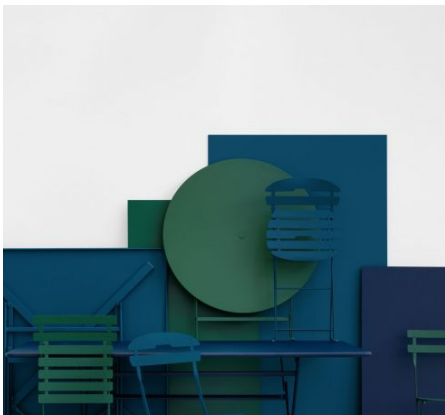


For [Fermob](#), “joie de vivre” is more than just an expression – it is an ethos of using colours to bring joy to everyday living. This French furniture company not only manufactures furniture in vibrant colours that enliven the outdoors, but the pieces are also sturdy and timeless, thanks to their UV-resistant paint technology.

[Fermob](#) is well known for its distinctive colours, put together by a multi-disciplinary team of designers and production experts. While each colour stands out, it also blends harmoniously into the rest of Fermob’s colour range. After switching to powder painting technology in 1996, Fermob has continued to experiment with different colour combinations in-house and has implemented a zero-waste painting line, demonstrating its commitment to sustainable manufacturing practices.



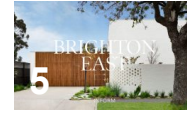
With up to 24 colours available, ranging from storm grey to pink praline, there is a colour for everyone and every space.



A Frame for Living – Marathon House by Neil Architecture
[READ MORE](#)



A Modern Rural Home – Courtyard House by CHIROFI
[READ MORE](#)



The Embodiment of Simplicity and Lightness – Brighton East by Inform
[READ MORE](#)



The Story of a Lifetime – Kew Residence by John Wardle Architects
[READ MORE](#)

Premium Flooring, hand selected from French and European Oak.

[View Our Range](#)

THE LOCAL MARKETPLACE



DANIEL BODDAM

Kelly Chair

[VIEW PRODUCT](#)



BIASOL
Tondo Mirror 150H x 900W
[VIEW PRODUCT](#)



COCO FLIP
Cooper Pendant
[VIEW PRODUCT](#)

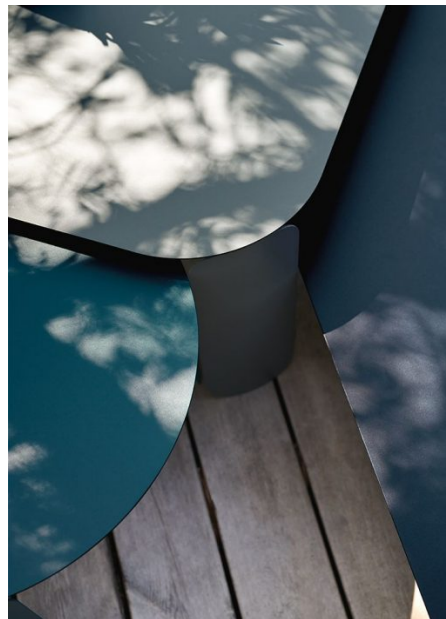


DOWEL JONES
TBC2 Leather Chair
[VIEW PRODUCT](#)

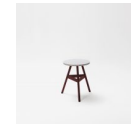
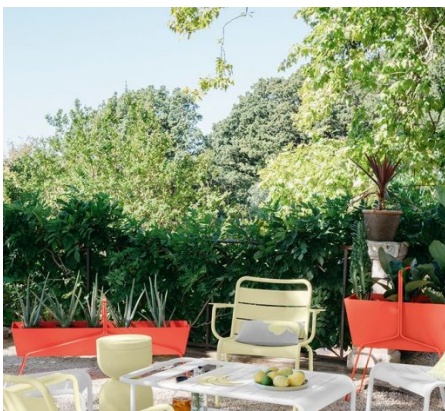


With up to 24 colours available, ranging from Storm Grey to Pink Praline, there is a colour for everyone and every space. Even so, [Fermob](#) continues to update its colour chart every year, releasing new colours in harmony with the existing colour range and often pushing boundaries by releasing new colours not yet seen before in outdoor furniture. These distinctive hues represent innovation in the use of colour in design, yet each creation is designed with the rest of the colours in mind, ensuring that any new addition will blend seamlessly with the current Fermob collection.

Celebrating 25 years since making the switch to powder painting, Fermob innovates again by introducing Colour trends. So far, it has given us [Light and Shade](#), a combination of dark tones to turn any interior or exterior space into a sophisticated realm. Paired with any lighting accessories, the space instantly exudes a warm and cosy ambience. Even more recent is the [Light on Pastel](#) trend, a celebration of fresh and vibrant pastels guaranteed to rejuvenate any area.



A one-of-a-kind pastel green, Opaline Green brings a welcoming pop of colour to any outdoor area, no matter what season.



BIASOL
The Mezzo Stool - Terrazzo
[VIEW PRODUCT](#)

VIDEO FEATURES



Project 350 by mckimm - A True Forever Home
[READ MORE](#)



An Exploration of Materials & Contrast - Eagle's Nest by Ian Bennett Design Studio
[READ MORE](#)



A Playful, Functional Family Home in Tasmania - Sandy Bay Residence by Flack Studio
[READ MORE](#)



The Peninsula House by Stafford Architecture and Hare + Klein
[READ MORE](#)



Oak House by Kennedy Nolan - A Life in Colour
[READ MORE](#)



DESIGN FEATURES



Referencing the Classical Arch - The Tondo Collection by Biasol
[READ MORE](#)



Lighting the Way - Volker Haug Studio
[READ MORE](#)



Playful, Timeless Design - DesignByThem
[READ MORE](#)



A Remarkable Local Collaboration - Nau 2019 Collection Shoot
[READ MORE](#)

PROJECT FEATURES



This year, [Fermob](#) has created Opaline Green, a one-of-a-kind pastel green. Used with whites, it creates an inviting space, or mixed with other pastels adds a natural touch. And when combined with dark shades, it livens the mood. Whether used indoors or outdoors, Opaline Green is designed to bring a pop of colour to freshen up any space. Built in the Fermob factory in Thoissey, northeast of Lyon, each product is made from rolling sheet steel, then powder-coated and finally oven-baked. Its 22-stage process, though time-consuming, is still one of the most efficient painting lines in Europe, ensuring a consistent and high-quality application to all its products. Not only are they sturdy to use but they also withstand harsh environments while maintaining their colour vibrancy over time.

With the addition of new, innovative colours to its already diverse colour chart, Fermob is bringing the joy of enduring colour to outdoor and indoor spaces, one vibrant piece of furniture at a time.

To learn more about Opaline Green, Fermob or Colour trends, visit [Fermob](#).



In Which a Residence and an Art Gallery Become One – M Penthouse by Oliver du Puy
[READ MORE](#)



A Modernist Coastal Retreat – Portsea Beach House by Studio Esteta
[READ MORE](#)



Contrast & Duality - The House at Prickly Rocks by O'Connor and Houle
[READ MORE](#)



A Living Extension of The Site – Bundeena Beach House by Grove Architects
[READ MORE](#)



Sustainable Coastal Living – St Andrews Beach House by Austin Maynard Architects
[READ MORE](#)

PROFILES



ARCHITECTURE

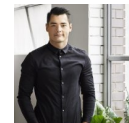
Baracco + Wright Architects

[VIEW PROFILE](#)



FURNITURE & HOME GOODS DESIGN

Mr and Mrs White
[VIEW PROFILE](#)



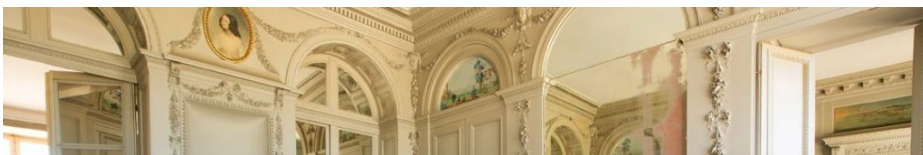
ARCHITECTURE

Ray Dinh Architecture
[VIEW PROFILE](#)



FURNITURE & LIGHTING DESIGN

Made By Morgen
[VIEW PROFILE](#)



ARCHITECTURE & INTERIOR DESIGN
Ian Moore Architects
VIEW PROFILE

INTRODUCING NEXT GENERATION
TRADE RESOURCES
FISHER & PAYKEL

SIGN UP TO OUR
MAILING LIST
Enter Your Email Here
SUBSCRIBE

artedomus

Laminex
X
YSG





PUBLISHED 7 JUNE, 2021
PHOTOGRAPHY AURELIE LECUYER

RELATED POSTS



ISSUE 04 FEATURE

Unlocking Doors – Windsor Architectural Hardware

Windsor Architectural Hardware is opening a new door for Australian architects and designers, expanding into the Australian market

[READ MORE](#)



THE VOLA SERIES

Elevated Tactility – Brushed Gold by VOLA

VOLA's Brushed Gold range captures the essence of luxury through a heightening of the everyday, where the tactile and textural

[READ MORE](#)



ISSUE 06 FEATURE

Harnessing Fire – Stoke Fireplace Studio

With a curated collection of fireplaces sourced from around the world, Stoke Fireplace Studio's offering is designed to provide an unparalleled

[READ MORE](#)



NEWS FEATURE



PROJECT FEATURE



ISSUE 04 FEATURE

A Legacy Unsurpassed – Cult Partners with Fredericia

Cult Design announces new partnership with Danish brand Fredericia.

[READ MORE](#)

The Spirit of the 20s – Spanish Queen by Robson Rak

Imbued with the vibrancy of the 'roaring 20s', Spanish Queen by Robson Rak sees the restoration, renovation and addition to an

[READ MORE](#)

Design Innovation – Pulpo and Domo

Representing a range of classic and contemporary designers and manufacturers, DOMO has become renowned for curating

[READ MORE](#)

TRENDING NOW



PROJECT FEATURE

At Home in the Forest – Forest House by Fearon Hay

[READ MORE](#)



VIDEO FEATURE

Drawn From The Landscape – Palm Beach

[READ MORE](#)



ISSUE 02 FEATURE

A Stalwart Mountain Cabin – Wanaka House by Fearon

[READ MORE](#)



THE TONGUE N GROOVE SERIES

The Peninsula House by Stafford Architecture and

[READ MORE](#)



ISSUE 02 FEATURE

A Sky Ground Connection – Cabbage Tree House by

[READ MORE](#)



THE ARTEDOMUS EXPERT

Episode I: Welcome to Japan

[READ MORE](#)



THE FISHER & PAYKEL SERIES

Eclectic Elegance – Annandale House Kitchen

[READ MORE](#)

PRINT PUBLICATION

Published three times a year, The Local Project print periodical showcases the latest architecture and design from Australia and New Zealand.

[ORDER NOW](#)

MAILING LIST

Exploring and showcasing a diverse range of local architecture, interiors and product design. Join our community and get weekly content delivered to your inbox.

[SIGN UP NOW](#)

PROUDLY SUPPORTED BY

[ARCHITECTURE & INTERIORS](#)

[DESIGN](#)

[VIDEOS](#)

[PROFILES & GALLERIES](#)

[INTERVIEWS](#)

[NEWS](#)

[MARKETPLACE](#)

[MANAGE SUBSCRIPTIONS](#)

