

UniCote® / LUX



unicote.com.au



Project | Lambeth House
Product | UniCote® LUX
Finish | Zinc Graphite
Profile | Standing Seam

Contents

Introduction	3
Finishes	5
Warranty	20
Benefits	21
Architectural profiles	24
Applications	25
How to specify	27
Contact details	30

Redefining building design by combining the beauty of natural finishes with the strength of steel

UniCote® LUX is more than a premium pre-painted steel product; it serves as a catalyst for architectural innovation. Specifically designed for high-end Australian architecture, it combines the world's leading coil coating technology with rigorous testing in the harsh Australian environment. This not only ensures superior performance but also delivers a stunning, long-lasting patterned and textured finish.



Project	Latrobe Valley GovHub
Product	UniCote® LUX
Finish	Ashwood
Profile	Interlocking Panel

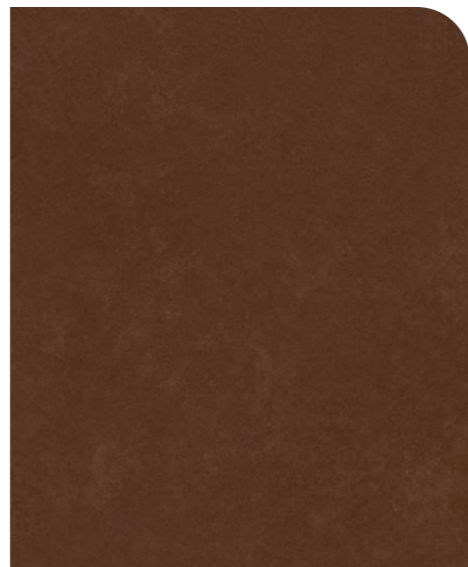
Corten

These distinct finishes offer a stunning and authentic weathered appearance, inspired by the rich patina of Corten steel. Designed to bring the beauty of natural rusted metal to architectural projects, these patterns provide a striking and unique aesthetic that adds depth and character to any structure without the risk of run off and stains.



Weathered Iron

Weathered Iron showcases the early onset of rusted steel. The contrasting colours of rust and steel offer a great depth of texture and design flexibility for a modern rustic look.



Corten Red

Corten Red depicts the appearance of naturally rusted steel. The rich and rugged red rust design offers a great depth of texture and architectural flexibility for a modern, aesthetically pleasing, industrial look.

The colours, patterns and design shown are provided as a guide only. We strongly recommend comparing your choice with an actual steel sample as colour and textural variations may apply.

Project	Joyce Street Apartment
Product	UniCote® LUX
Finish	Weathered Iron
Profile	Standing Seam



Timber

This range offers a remarkable alternative to traditional timber, providing the warmth and natural beauty of wood with enhanced durability, low maintenance requirements and compliance as part of a system when used in BAL FZ bushfire prone areas, given its non-combustible nature.



Ashwood

Ashwood reflects a mild tone wood pattern with detailed graining. The linear grains and dark inserts provide depth and tone to perfectly capture the natural beauty and warmth offered by wood.



Maple

The honey, golden hues of Maple provide a welcoming tone. Maple's warmth adds a pop of personality to designs, drawing attention to its natural grain.



Wenge

Wenge portrays the same aesthetic qualities of African Blackwood. The fine dark grains with narrow chocolate brown streaks, provide a rich finish synonymous with classical renaissance.

Project | Peter Teakle Winery Cellar Door
Product | UniCote® LUX
Pattern | Ashwood
Profile | Interlocking Panel

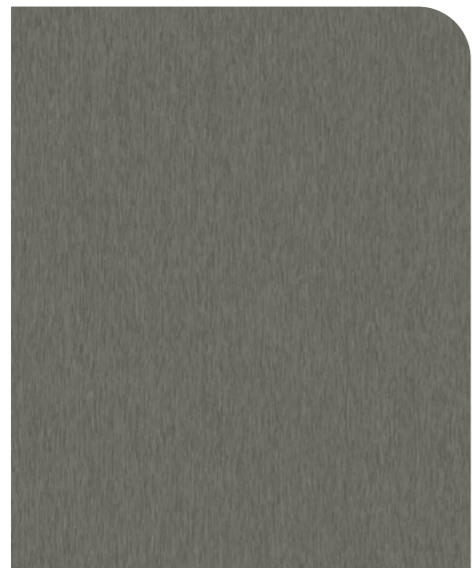




Project	Prince Street Residence
Product	UniCote® LUX
Finish	Maple
Profile	Interlocking Panel

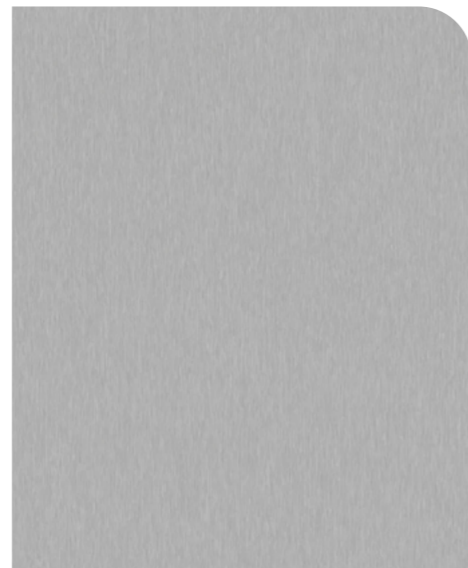
Zinc

This range has been meticulously crafted to replicate the captivating aesthetics of Zinc and Titanium, offering a sophisticated cladding solution for architects, builders, and designers.



Zinc Graphite

Zinc Graphite resembles a naturally aged patina showcasing a striking fusion of dark graphite tones evoking a sense of depth and richness. Hairline grains capture and reflect light, exuding a contemporary elegance that seamlessly complements modern architectural designs.



Silver Quartz

Silver Quartz embodies the timeless allure of classic zinc with its light, silvery hues. The pattern mimics the natural patina and weathered effect of zinc, resulting in a captivating interplay of shades that create a sense of depth and texture, making it a popular choice for both contemporary and traditional projects.



Project | Lambeth House
Product | UniCote® LUX
Finish | Zinc Graphite
Profile | Standing Seam

The colours, patterns and design shown are provided as a guide only. We strongly recommend comparing your choice with an actual steel sample as colour and textural variations may apply.

Imprinting

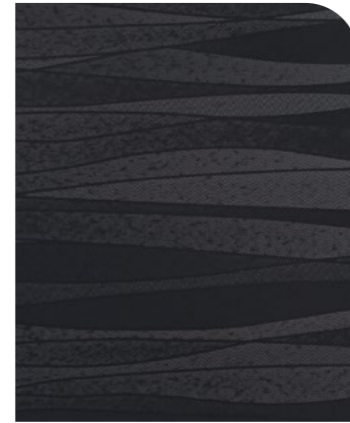
This collection of distinct and unique patterns boasts enriched textures, enabling light to bounce in various directions, creating captivating reflections.



Pentagon
Inspired by the captivating beauty of geometric shapes, Pentagon adds a striking and contemporary touch to architectural designs. This pattern showcases a series of interlocking pentagon shapes, creating a visually dynamic and appealing effect.



Saffiano
Saffiano draws inspiration from the world of luxury leather goods. It replicates the iconic Saffiano leather texture known for its distinctive crosshatch pattern. With its textured surface and refined aesthetic, this pattern is perfect for projects that demand a sense of luxury and exclusivity.

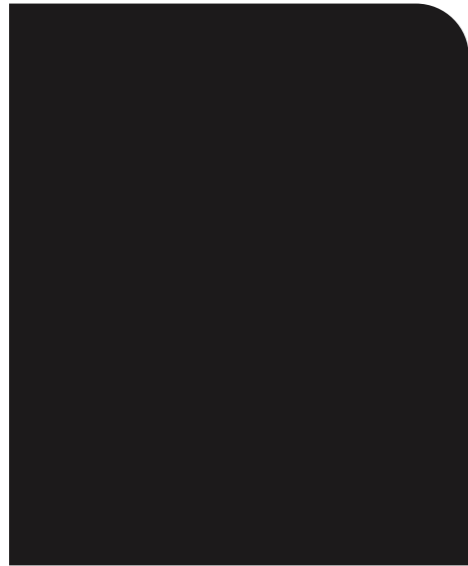


Spectrum
Texture serves architecture by expressing material traits and enhancing light for captivating designs. Spectrum's abstract pattern and reflective lines create rich design dimensions.

Project | Forest Glen Residence
Product | UniCote® LUX
Finish | Spectrum
Profile | Interlocking Panel



Midnight Matt & Metal Stone



Midnight Matt*

Midnight Matt embodies elegance and sophistication. As the darkest matt black available in the Australian market, Midnight Matt makes a bold statement, exuding a sense of mystery and timeless allure. It offers a deep, velvety black hue with a sleek matt finish, making it a perfect choice for creating striking contrasts and contemporary aesthetics.



Metal Stone

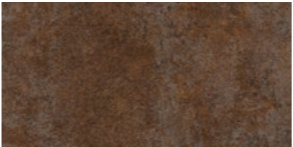
Metal Stone captures the essence of raw concrete showcasing its unique blend of ruggedness and subtle elegance. Inspired by the industrial appeal of concrete surfaces, Metal Stone brings a touch of urban sophistication to architectural designs.

The colours, patterns and design shown are provided as a guide only. We strongly recommend comparing your choice with an actual steel sample as colour and textural variations may apply.

*Midnight Matt utilises an MVP paint. All other UniCote® LUX finishes utilise a PVDF paint.



Project	Wamuran Residence
Product	UniCote® LUX
Finish	Midnight Matt
Profile	Standing Seam




Project | Brimbank Aquatic and Wellness Centre
Product | UniCote® LUX
Pattern | Weathered Iron
Profile | Insulated Panel

Cladding warranty up to 25 years

UniCote® LUX utilizes a hot-dipped Aluminium/Zinc/Magnesium alloy-coated substrate, paired with state-of-the-art organic coating systems. This combination results in an exceptionally durable, patterned paint system that offers superior colour and gloss retention, designed to withstand UV damage from the harsh Australian sun.

Project specific warranties available upon application via unicote.com.au/warranty



Project	Townhouse Dwelling
Product	UniCote® LUX
Finish	Corten Red
Profile	Interlocking Panel

Benefits

We understand leaving a lasting impression that evokes a sense of wonder and beauty, requires using a material that has the perfect combination of aesthetics and performance. That's why we developed UniCote® LUX – a premium pre-painted patterned steel that goes beyond the ordinary, enabling architects and designers to unleash their creativity and bring their boldest design visions to life.

Project | Mountain View Residence
Product | UniCote® LUX
Finish | Weathered Iron
Profile | Shingles

Non-Combustible

Fire rated and compliant to AS1530.1 / AS1530.3. Manufactured for the most extreme BAL-FZ category.

Superior Corrosion Resistance

Aluminium / Zinc / Magnesium coating with active protection.

High-End Substitute

Unique substitute for natural, exotic and metallic finishes.

Industry Leading Warranty

Cladding warranty up to 25 years.

Tested in Australian Conditions

(AS/NZS 2728:2013) Rigorously tested to perform in the harshest conditions with real world testing sites.

Distinctive Design

Premium painted steel with stunning patterned and textured finish.

World Class Paint System

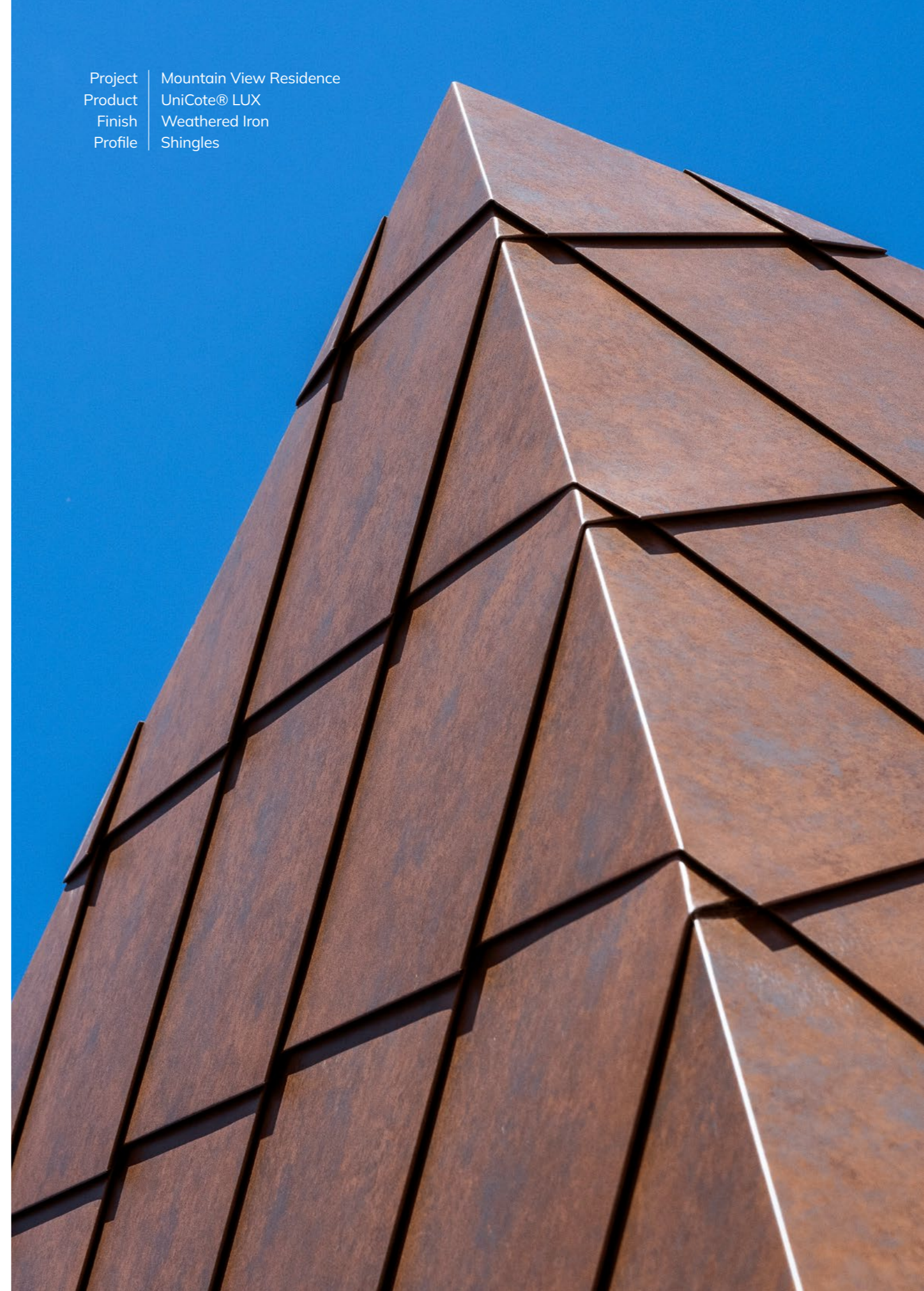
PVDF technology for long lasting colour and vibrancy.

Low Maintenance

Long lifespan and durability with minimal upkeep.

Environmentally Sustainable

Our mills utilise Electric Arc Furnace (EAF) technology which can produce up to 85% less carbon dioxide emissions than blast furnaces.

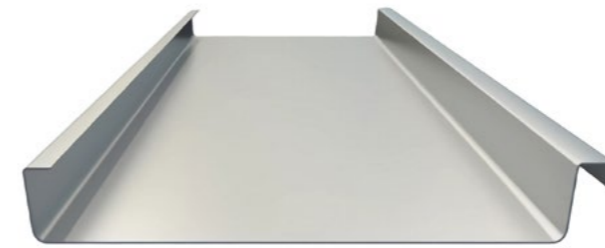




Architectural profiles

When it comes to metal cladding, there isn't a 'one-size-fits-all' solution. Here are the various systems of metal cladding that are commonly used on the facades and roofs of both residential and commercial buildings available in UniCote® LUX.

Contact us to enquire about other available profiles.



Standing Seam



Interlocking



Snaplock



Nailstrip

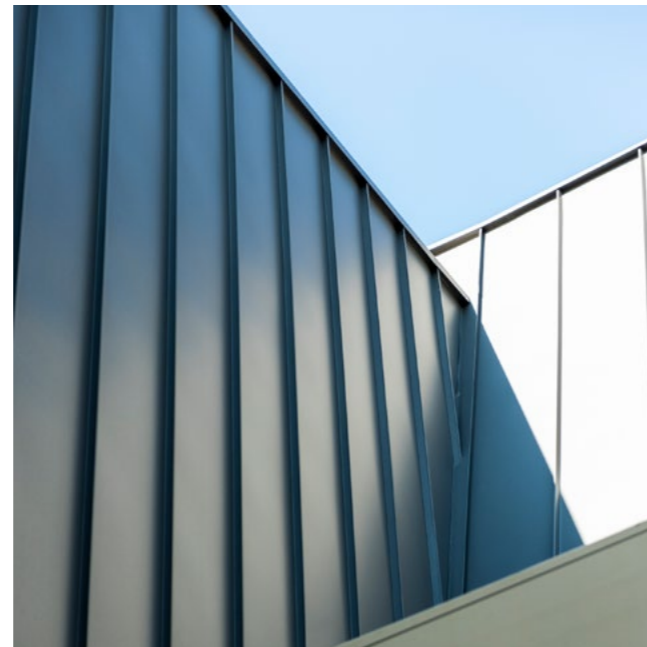
Project | Latrobe Valley GovHub
Product | UniCote® LUX
Finish | Ashwood
Profile | Interlocking Panel

Applications

The remarkable versatility of UniCote® LUX allows it to be effortlessly roll formed into numerous profiles, ideal for roofing, cladding, garage doors, and insulated panels. This flexibility unleashes a realm of design possibilities.



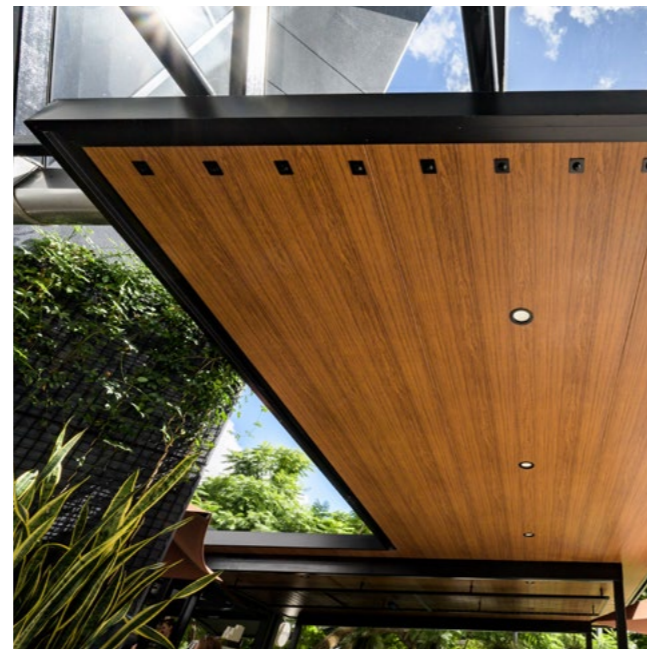
Roofing



Cladding



Garage Doors



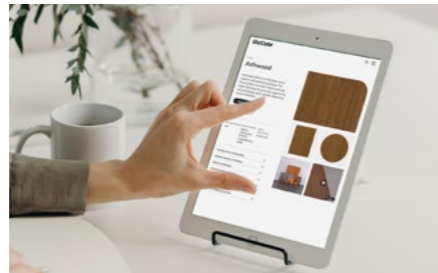
Insulated Panel



Project | Freshwater Place Residence
Product | UniCote® LUX
Finish | Maple
Profile | Insulated Panel

How to specify

Project | Yellow Rock Passivhaus
Product | UniCote® LUX
Finish | Weathered Iron
Profile | Interlocking Panel



Product

UniCote® LUX

UniCote® offers a wide range of metal solutions to make the right choice in building materials suitable for the atmospheric environment present.

Choose from:

- UniCote® Select
- UniCote® Coastal
- UniCote® Extreme
- UniCote® LUX

Finish

Ashwood

Select from an array of UniCote® LUX patterns including:

- Weathered Iron
- Corten Red
- Ashwood
- Maple
- Wenge
- Zinc Graphite
- Silver Quartz
- Metal Stone
- Pentagon
- Spectrum
- Saffiano
- Midnight Matt

Profile

Interlocking Panel

UniCote® integrates with a variety of architectural cladding profiles including:

- Standing Seam
- Interlocking Panel
- Snaplock
- Nailstrip

Award winning specification

This remarkable home is the winner of the 2023 HIA Australian GreenSmart Home of the Year Award and 2023 HIA Australian GreenSmart Custom Built Home. The design is an exceptional energy-efficient house that is fully accessible, multi generational in design and built to BAL-40 rating.

Specification:

UniCote® LUX, Weathered Iron, Interlocking Panel





Project Skyline Terrace, Mt. Hotham
Product UniCote® LUX
Finish Midnight Matt
Profile Standing Seam

Get in touch

For more information, advice or samples, get in touch with our UniCote® team.

unicote.com.au
1800 UNICOTE (1800 864 268)

Head office **Victoria**
64-66 Ventura Place
Dandenong South
VIC 3175

State offices **New South Wales**
15 Wonderland Drive
Eastern Creek
NSW 2766

Queensland
Unit 5, 145 Archerfield Road
Richlands
QLD 4077

Western Australia
10 Glassford Road
Kewdale
WA 6105

South Australia
26 Circuit Drive
Hendon
SA 5014

Follow us
[@unicotesteel](https://www.instagram.com/unicotesteel)



Solar Absorptance (SA) is the fraction of the total incident solar radiation that is absorbed by the roofing material. It is expressed as a ratio between 0 and 1, with a lower number a cooler option. These are nominal values calculated in accordance with ASTM E 903-96.

Solar Reflectance Index (SRI) is a measure of the solar reflectance and emissivity of materials. Measured on a scale of 0 (least reflective) to 100 (most reflective). These are nominal values calculated in accordance with ASTM E1980-11.

The colours, patterns and design shown are provided as a guide only. We strongly recommend comparing your choice with an actual steel sample as colour and textural variations may apply. Please check availability of your chosen colour with your supplier. UniCote® is a registered trade mark of Selection Steel Trading Pty Ltd. © 2023 Selection Steel Trading Pty Ltd. ABN 37 005 324 407. All rights reserved.

**Beyond Colour.
Australia's Premium Steel Choice.**

Visit unicote.com.au

UniCote® / LUX

V1.2 2023

