

# WARDROBE WAREHOUSE

*we've got you sorted!*



[wardrobe-warehouse.co.nz](http://wardrobe-warehouse.co.nz)



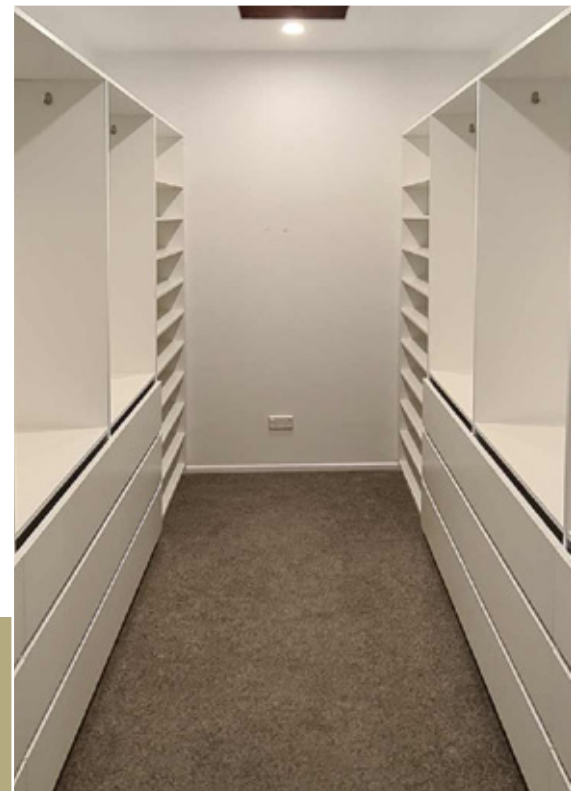
## Table of contents

Click to go to...

<b>WALK-IN WARDROBES</b>	3
<b>REACH-IN WARDROBES</b>	4
<b>FREE-STANDING WARDROBES</b>	5
<b>GARAGE/LINEN SOLUTIONS</b>	6
<b>SOHO SLIDINGDOORS</b>	7
<b>FLATPACK WARDROBES</b>	8

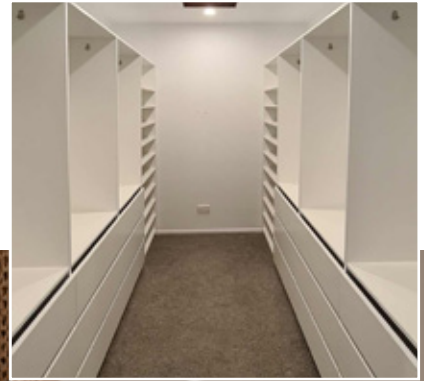
## We've got you sorted!

*We are a family owned and operated business with a great team of people. Having come a long way since our humble beginnings in the 90's we pride ourselves in delivering high quality product to our wide ranging customer base throughout the wider Auckland region.*



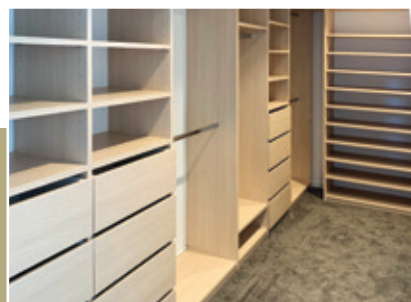
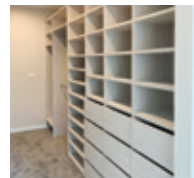
wardrobe-warehouse.co.nz

# Our luxurious walk-in wardrobes



## FEATURES:

- Custom designed to suit your needs
- Machined from 18mm and 25mm Melamine
- Everything is stored away neat & tidily
- Pants racks, belt holders, laundry hampers and more options
- Create personalised space for each user
- Soft-close drawers and base/kickboards options
- 3D Design so that you can be sure of the final result
- Choose from a wide range of Melamine options

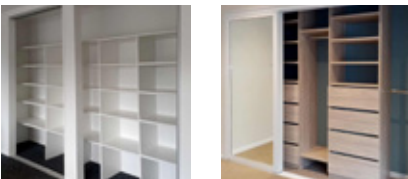
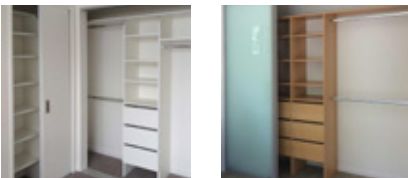


wardrobe-warehouse.co.nz



**FEATURES:**

- Standard white embossed MDF Melamine (18mm) - colour options available, charges apply
- PVC clashed visible edge (2mm)
- Hafele drawer system
- Chrome steel hanger rail
- Cam and screw in dowel for shelf adjustment and safety
- Securely mounted to the wall using a floor-based system



## More space with our reach-in wardrobes

Are you dissatisfied with the storage space in your existing reach-in wardrobe? Our skilled staff will help you realise what is possible within the space. We will listen to what you have to say and customise the design to meet your needs - half or long hang space, shelving and drawers. We'll take care of everything from your favourite frocks to your balls of socks!



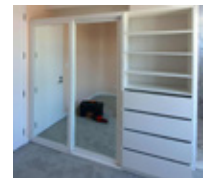
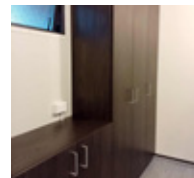
## Our versatile free standing wardrobes



### FEATURES:

- Custom designed, from 500mm to 6m wide
- Machined from 18mm and 25mm Melamine
- Sliding or hung door options
- Easily removable & relocatable
- Everything is stored away neat & tidily with a minimum depth 550mm
- Choose from a range of Melamine options

Our free-standing wardrobes are the perfect solution for bedrooms with no existing storage. Deep enough for your clothes to hang neatly inside, they provide a permanent or short-term storage fix, that is custom-made and built to last.



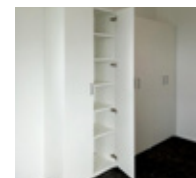
[wardrobe-warehouse.co.nz](http://wardrobe-warehouse.co.nz)

# Organise your garage

Dead space in your garage equals wasted storage space. Why not consider one of our free-standing shelving and storage units. Custom-made to suit your needs and machined from 18 mm and 25 mm Melamine, we build to last! What's more, you can take them with you if you move on or relocate them if you need to free up some space!

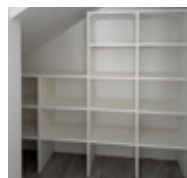
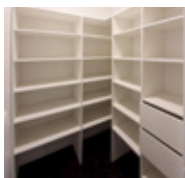
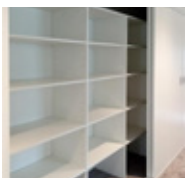
## FEATURES:

- Standard white embossed MDF Melamine (18mm) - colour options available, charges apply
- PVC clashed visible edge (2mm)
- Hafele drawer system
- Chrome steel hanger rail
- Cam and screw in dowel for shelf adjustment and safety
- Securely mounted to the wall using a floor-based system



# Shelving solutions and linen cupboards

Do you have a linen cupboard with non-adjustable or dissatisfying shelving options? Or an empty cupboard with no shelving at all? Consider our fully adjustable, custom-made shelving solutions; it's robust and looks great! Talk to us about our slatted shelving options - a fabulous way to create air movement between shelves.



## FEATURES:

- Standard white embossed MDF Melamine (18mm) - colour options available, charges apply
- PVC clashed visible edge (2mm)
- Hafele drawer system
- Cam and screw in dowel for shelf adjustment and safety



wardrobe-warehouse.co.nz

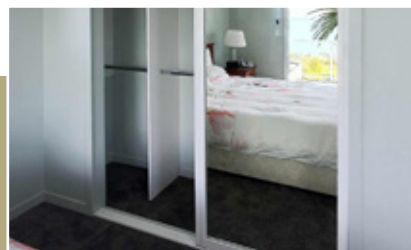
# The SOHO soft-close sliding door



As a team we like to approach challenges with innovative, solutions-based thinking, enhancing rooms and allowing for better organisation. We developed the SOHO™ soft-close system for anyone who appreciates quality, with luxury in mind... in our very own factory. The smooth sliding action is complemented by a patented soft closer set that gently brakes the door and holds it neatly in a closed position.

## SOHO FEATURES:

- Double (75mm) and triple (110mm) track layouts
- Easy to slide doors
- No visible assembly fixings
- Manufactured with a variety of glazing materials from 4mm - 9mm in thickness
- Simple door adjustment
- Smooth, quiet sliding action
- Magnetic door positioning system for triple doors
- A registered design by the Wardrobe Warehouse #423583



wardrobe-warehouse.co.nz





## Why choose Wardrobe Warehouse?

### Custom made flatpack wardrobes

Our DIY wardrobes are a cost effective way to get a custom wardrobe without sacrificing on quality. All our units are machined from 18mm MDF Melamine. If you are pretty handy with a battery drill and measuring tape then a flatpack wardrobe system could be for you.

#### IT'S A SIMPLE PROCESS:

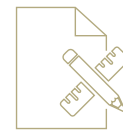
- Measure your space/wardrobe
- Choose from the starter designs on our website
- Send us your wardrobe measurements via email so we can draw up a 3D plan at no charge for you to review and make any changes necessary
- Confirm the job by making full payment via Internet Banking, Mastercard or Visa
- Collect your flatpack from our warehouse on Springs Rd, East Tamaki



excellent personal  
service, we aim  
to please



quality  
products and  
options



free on-site  
measure and  
quotes



quick quote and  
order turnaround  
times



flexible design  
service tailor  
made solutions



direct savings  
from factory  
to you



[wardrobe-warehouse.co.nz](http://wardrobe-warehouse.co.nz)

visit our showroom at 83F Springs Rd, East Tamaki, Auckland  
Ph 0800 800 833 | E [sales@wardrobe-warehouse.co.nz](mailto:sales@wardrobe-warehouse.co.nz)