



Accumen® Column

www.accumen.co.nz

p 09 276 4224
f 09 276 4269

PO Box 22 675
89 Huia Road
Otahuhu, Auckland

info@accumen.co.nz

- Robust
- Secure
- Exceptional

“Genius is one tenth inspiration and nine tenths perspiration”

... Thomas Edison

- *Pre-plastered lightweight mouldings*
- *ShapeCrete® lightweight concrete*
- **KICKIT®** plaster
- *TidyUp® adhesive*
- *bBOLD® creations*

Please visit our website for more inspirational ideas:
www.accumen.co.nz

We don't just deliver products, we CREATE them

CREATIVE SKILL !!!!!



The Auckland Art Gallery is an **ICON**, admired for its beauty and the lasting quality of its architecture.

Built in 1887, it has been renovated since 2008, including the reinstatement of missing original and historical components.

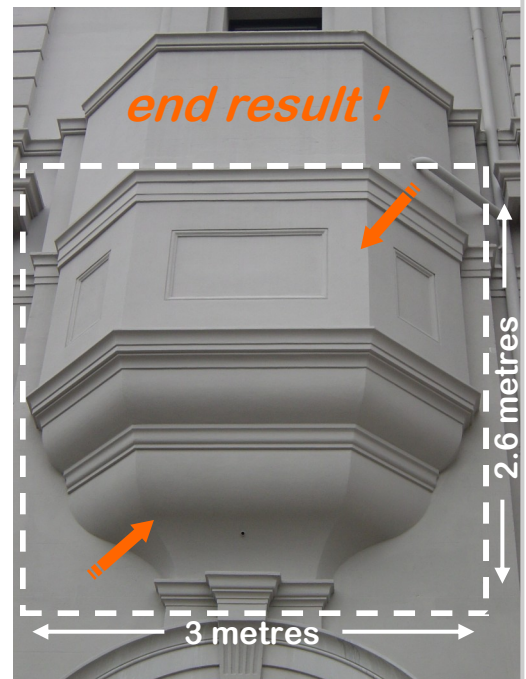


This reinstatement became the responsibility of **Accumen Shapes**.

Working from drawings, old photographs, and with the project manager and architects, the **Accumen Shapes** team were able to create negative moulds using our latest “in house” technology.

These moulds were craned in to place and boxed to the side of the Art Gallery. An exclusive concrete was poured in to the moulds. Once set the negative moulds were removed leaving the shapes in place. The final finishing touches were then added by nominated skilled plasterers.

Accumen Shapes were proud to produce this **ECONOMICAL** addendum, for the benefit of the people of Auckland and the Auckland City Council, as well as for this important and valuable building.



Every effort has been made to ensure accuracy in this publication, but Accumen Shapes Ltd accepts no liability for any errors of fact or opinion expressed.